

## PROJECT DETAILS: Rio Blanco County, CO

Geodetic System: US State Plane 1983  
Datum: North American Datum 1983  
Ellipsoid: GRS 1980  
Zone: Colorado Central Zone  
System Datum: Mean Sea Level

## REFERENCE INFORMATION

Co-ordinate (N/E) Reference: Well RG 13-7-297 - Slot RG 13-7-297, True North  
Vertical (TVD) Reference: KB=30' @ 6633.00usft (H&P #329)  
Section (VS) Reference: Slot - RG 13-7-297(0.00N, 0.00E)  
Measured Depth Reference: KB=30' @ 6633.00usft (H&P #329)  
Calculation Method: Minimum Curvature

## WELLBORE TARGET DETAILS (MAP CO-ORDINATES AND LAT/LONG)

Name	TVD	+N/-S	+E/-W	Northing	Easting	Latitude	Longitude	Shape
RG 13-7-297 - KMV Gas	8063.00	533.01	-345.26	1761431.40	2205891.60	39.889982	-108.330286	Circle (Radius: 50.00)
RG 13-7-297 - PBHL	11723.00	533.01	-345.26	1761431.40	2205891.60	39.889982	-108.330286	Point

## ANNOTATIONS

MD	Inc	Azi	TVD	+N/-S	+E/-W	VSecDeparture	Annotation
120.00	0.00	0.00	120.00	0.00	0.00	0.00	Start Build 2.00
356.76	4.74	327.07	356.49	8.21	-5.32	9.78	Start 7416.49 hold at 356.76 MD
7773.26	4.74	327.07	7747.67	522.07	-338.18	622.02	Start Drop -1.50
8088.94	0.00	0.00	8063.00	533.01	-345.26	635.06	Start 3660.00 hold at 8088.94 MD
11748.94	0.00	0.00	11723.00	533.01	-345.26	635.06	TD at 11748.94

## WELL DETAILS: RG 13-7-297

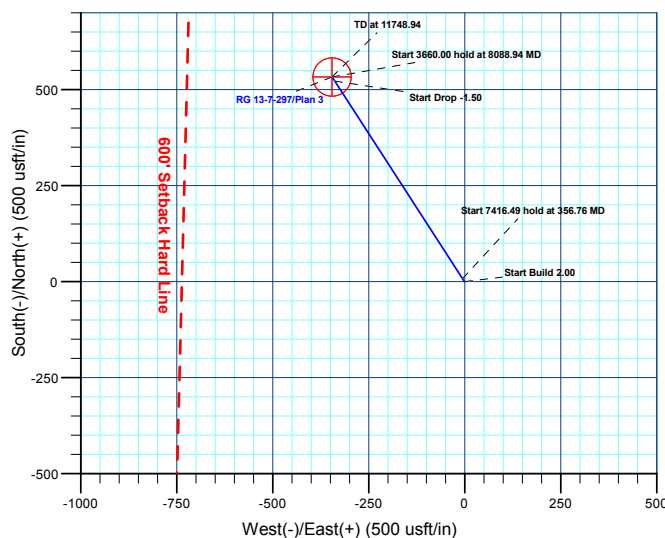
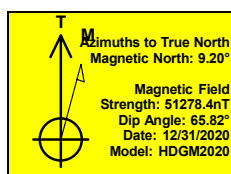
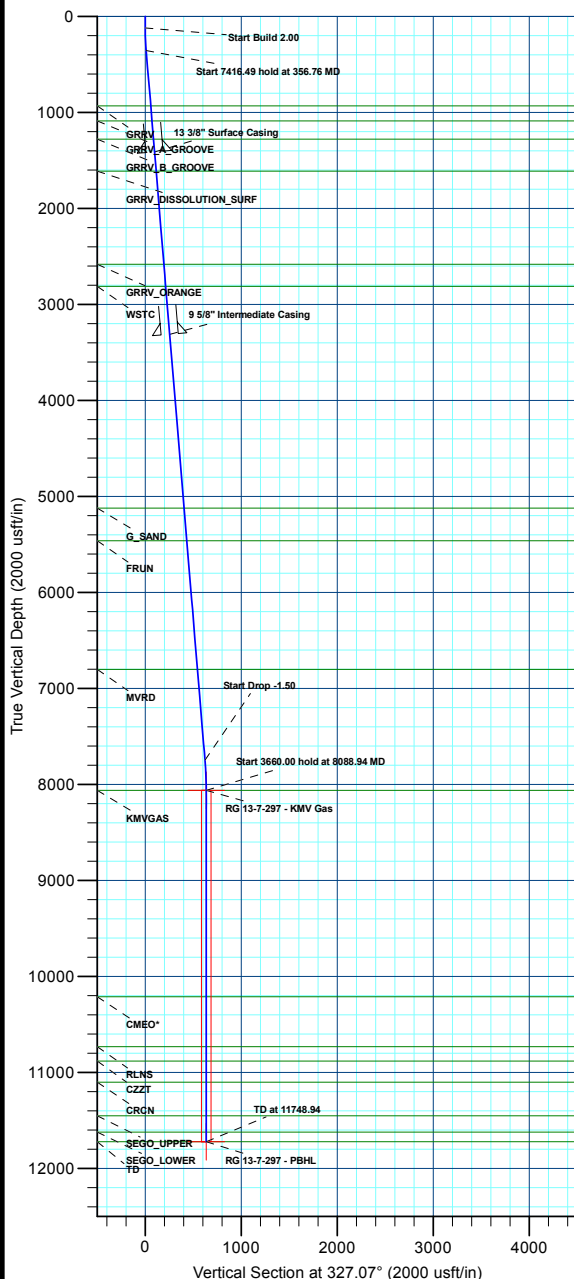
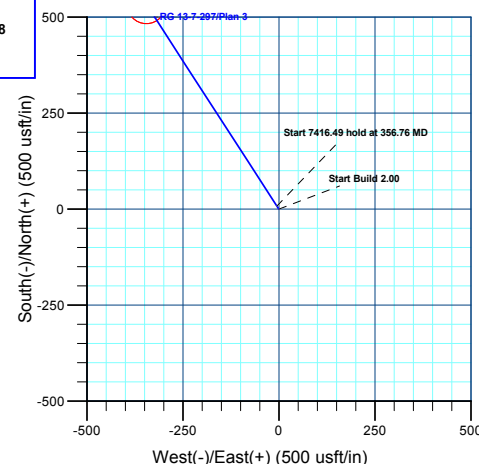
+N/-S	+E/-W	Northing	Ground Elev:	Latitude	Longitude	Slot
0.00	0.00	1760887.90	6603.00 2206220.10	39.888519	-108.329055	RG 13-7-297

## CASING DETAILS

TVD	MD	Name	Size
1413.00	1416.89	13 3/8" Surface Casing	13-3/8
3313.00	3323.40	9 5/8" Intermediate Casing	9-5/8

## FORMATION TOP DETAILS

TVDPath	MDPath	Formation
933.00	935.24	GRRV
1088.00	1090.77	GRRV_A_GROOVE
1278.00	1281.43	GRRV_B_GROOVE
1613.00	1617.57	GRRV DISSOLUTION_SURF
2583.00	2590.90	GRRV_ORANGE
2813.00	2821.68	WSTC
5123.00	5139.59	G_SAND
5463.00	5480.76	FRUN
6803.00	6825.35	MVRD
8063.00	8088.94	KMVGAS
10213.00	10238.94	CMEQ*
10733.00	10758.94	RLNS
10883.00	10908.94	CZZT
11103.00	11128.94	CRCN
11453.00	11478.94	SEGO_UPPER
11623.00	11648.94	SEGO_LOWER
11723.00	11748.94	TD





## **Terra Energy Partners, LLP**

**Rio Blanco County, CO**

**RGU 23-7-297 Pad**

**RG 13-7-297 - Slot RG 13-7-297**

**Wellbore #1**

**Plan: Plan 3**

## **KLX Well Planning Report**

**22 March, 2022**



<b>Database:</b>	EDM 5000.1 Single User Db	<b>Local Co-ordinate Reference:</b>	Well RG 13-7-297 - Slot RG 13-7-297
<b>Company:</b>	Terra Energy Partners, LLP	<b>TVD Reference:</b>	KB=30' @ 6633.00usft (H&P #329)
<b>Project:</b>	Rio Blanco County, CO	<b>MD Reference:</b>	KB=30' @ 6633.00usft (H&P #329)
<b>Site:</b>	RGU 23-7-297 Pad	<b>North Reference:</b>	True
<b>Well:</b>	RG 13-7-297	<b>Survey Calculation Method:</b>	Minimum Curvature
<b>Wellbore:</b>	Wellbore #1		
<b>Design:</b>	Plan 3		

<b>Project</b>	Rio Blanco County, CO		
<b>Map System:</b>	US State Plane 1983	<b>System Datum:</b>	Mean Sea Level
<b>Geo Datum:</b>	North American Datum 1983		
<b>Map Zone:</b>	Colorado Central Zone		

Site		RGU 23-7-297 Pad			
Site Position:		Northing:	1,760,880.90 usft	Latitude:	39.888499
From:	Map	Easting:	2,206,203.50 usft	Longitude:	-108.329114
Position Uncertainty:	0.00 usft	Slot Radius:	13-3/16 "	Grid Convergence:	-1.78 °

Well	RG 13-7-297 - Slot RG 13-7-297					
Well Position	+N/-S	7.51 usft	Northing:	1,760,887.90 usft	Latitude:	39.888519
	+E/-W	16.37 usft	Easting:	2,206,220.10 usft	Longitude:	-108.329056
Position Uncertainty		0.00 usft	Wellhead Elevation:		Ground Level:	6,603.00 usft

<b>Wellbore</b>	Wellbore #1				
<b>Magnetics</b>	<b>Model Name</b>	<b>Sample Date</b>	<b>Declination (°)</b>	<b>Dip Angle (°)</b>	<b>Field Strength (nT)</b>
	HDGM2020	12/31/2020	9.20	65.82	51,278.40000000

<b>Design</b>	Plan 3			
<b>Audit Notes:</b>				
<b>Version:</b>	<b>Phase:</b>	PLAN	<b>Tie On Depth:</b>	0.00
<b>Vertical Section:</b>	<b>Depth From (TVD) (usft)</b>	<b>+N/-S (usft)</b>	<b>+E/-W (usft)</b>	<b>Direction (°)</b>
	0.00	0.00	0.00	327.07

<b>Plan Sections</b>										
Measured Depth (usft)	Inclination (°)	Azimuth (°)	Vertical Depth (usft)	+N/-S (usft)	+E/-W (usft)	Dogleg Rate (°/100usft)	Build Rate (°/100usft)	Turn Rate (°/100usft)	TFO (°)	Target
0.00	0.00	0.00	0.00	0.00	0.00	0.00	0.00	0.00	0.00	
120.00	0.00	0.00	120.00	0.00	0.00	0.00	0.00	0.00	0.00	
356.76	4.74	327.07	356.49	8.21	-5.32	2.00	2.00	0.00	327.07	
7,773.26	4.74	327.07	7,747.67	522.07	-338.18	0.00	0.00	0.00	0.00	
8,088.94	0.00	0.00	8,063.00	533.01	-345.26	1.50	-1.50	0.00	180.00	RG 13-7-297 - KMV C
11,748.94	0.00	0.00	11,723.00	533.01	-345.26	0.00	0.00	0.00	0.00	RG 13-7-297 - PBHL

<b>Database:</b>	EDM 5000.1 Single User Db	<b>Local Co-ordinate Reference:</b>	Well RG 13-7-297 - Slot RG 13-7-297
<b>Company:</b>	Terra Energy Partners, LLP	<b>TVD Reference:</b>	KB=30' @ 6633.00usft (H&P #329)
<b>Project:</b>	Rio Blanco County, CO	<b>MD Reference:</b>	KB=30' @ 6633.00usft (H&P #329)
<b>Site:</b>	RGU 23-7-297 Pad	<b>North Reference:</b>	True
<b>Well:</b>	RG 13-7-297	<b>Survey Calculation Method:</b>	Minimum Curvature
<b>Wellbore:</b>	Wellbore #1		
<b>Design:</b>	Plan 3		

Planned Survey									
Measured Depth (usft)	Inclination (°)	Azimuth (°)	Vertical Depth (usft)	+N/-S (usft)	+E/-W (usft)	Vertical Section (usft)	Dogleg Rate (°/100usft)	Build Rate (°/100usft)	Turn Rate (°/100usft)
0.00	0.00	0.00	0.00	0.00	0.00	0.00	0.00	0.00	0.00
100.00	0.00	0.00	100.00	0.00	0.00	0.00	0.00	0.00	0.00
<b>Start Build 2.00</b>									
120.00	0.00	0.00	120.00	0.00	0.00	0.00	0.00	0.00	0.00
200.00	1.60	327.07	199.99	0.94	-0.61	1.12	2.00	2.00	0.00
300.00	3.60	327.07	299.88	4.74	-3.07	5.65	2.00	2.00	0.00
<b>Start 7416.49 hold at 356.76 MD</b>									
356.76	4.74	327.07	356.49	8.21	-5.32	9.78	2.00	2.00	0.00
400.00	4.74	327.07	399.58	11.20	-7.26	13.35	0.00	0.00	0.00
500.00	4.74	327.07	499.24	18.13	-11.74	21.60	0.00	0.00	0.00
600.00	4.74	327.07	598.90	25.06	-16.23	29.86	0.00	0.00	0.00
700.00	4.74	327.07	698.56	31.99	-20.72	38.11	0.00	0.00	0.00
800.00	4.74	327.07	798.22	38.92	-25.21	46.37	0.00	0.00	0.00
900.00	4.74	327.07	897.88	45.85	-29.70	54.62	0.00	0.00	0.00
<b>GRRV</b>									
935.24	4.74	327.07	933.00	48.29	-31.28	57.53	0.00	0.00	0.00
1,000.00	4.74	327.07	997.54	52.77	-34.19	62.88	0.00	0.00	0.00
<b>GRRV_A_GROOVE</b>									
1,090.77	4.74	327.07	1,088.00	59.06	-38.26	70.37	0.00	0.00	0.00
1,100.00	4.74	327.07	1,097.19	59.70	-38.67	71.13	0.00	0.00	0.00
1,200.00	4.74	327.07	1,196.85	66.63	-43.16	79.39	0.00	0.00	0.00
<b>GRRV_B_GROOVE</b>									
1,281.43	4.74	327.07	1,278.00	72.27	-46.82	86.11	0.00	0.00	0.00
1,300.00	4.74	327.07	1,296.51	73.56	-47.65	87.64	0.00	0.00	0.00
1,400.00	4.74	327.07	1,396.17	80.49	-52.14	95.90	0.00	0.00	0.00
<b>13 3/8" Surface Casing</b>									
1,416.89	4.74	327.07	1,413.00	81.66	-52.90	97.29	0.00	0.00	0.00
1,500.00	4.74	327.07	1,495.83	87.42	-56.63	104.15	0.00	0.00	0.00
1,600.00	4.74	327.07	1,595.49	94.35	-61.11	112.41	0.00	0.00	0.00
<b>GRRV DISSOLUTION_SURF</b>									
1,617.57	4.74	327.07	1,613.00	95.56	-61.90	113.86	0.00	0.00	0.00
1,700.00	4.74	327.07	1,695.15	101.27	-65.60	120.67	0.00	0.00	0.00
1,800.00	4.74	327.07	1,794.80	108.20	-70.09	128.92	0.00	0.00	0.00
1,900.00	4.74	327.07	1,894.46	115.13	-74.58	137.18	0.00	0.00	0.00
2,000.00	4.74	327.07	1,994.12	122.06	-79.07	145.43	0.00	0.00	0.00
2,100.00	4.74	327.07	2,093.78	128.99	-83.55	153.69	0.00	0.00	0.00
2,200.00	4.74	327.07	2,193.44	135.92	-88.04	161.94	0.00	0.00	0.00
2,300.00	4.74	327.07	2,293.10	142.85	-92.53	170.20	0.00	0.00	0.00
2,400.00	4.74	327.07	2,392.76	149.77	-97.02	178.45	0.00	0.00	0.00
2,500.00	4.74	327.07	2,492.42	156.70	-101.51	186.71	0.00	0.00	0.00
<b>GRRV_ORANGE</b>									
2,590.90	4.74	327.07	2,583.00	163.00	-105.59	194.21	0.00	0.00	0.00
2,600.00	4.74	327.07	2,592.07	163.63	-105.99	194.96	0.00	0.00	0.00
2,700.00	4.74	327.07	2,691.73	170.56	-110.48	203.22	0.00	0.00	0.00
2,800.00	4.74	327.07	2,791.39	177.49	-114.97	211.47	0.00	0.00	0.00
<b>WSTC</b>									
2,821.68	4.74	327.07	2,813.00	178.99	-115.94	213.26	0.00	0.00	0.00
2,900.00	4.74	327.07	2,891.05	184.42	-119.46	219.73	0.00	0.00	0.00
3,000.00	4.74	327.07	2,990.71	191.35	-123.95	227.98	0.00	0.00	0.00
3,100.00	4.74	327.07	3,090.37	198.27	-128.44	236.24	0.00	0.00	0.00
3,200.00	4.74	327.07	3,190.03	205.20	-132.92	244.49	0.00	0.00	0.00
3,300.00	4.74	327.07	3,289.68	212.13	-137.41	252.75	0.00	0.00	0.00
<b>9 5/8" Intermediate Casing</b>									

<b>Database:</b>	EDM 5000.1 Single User Db	<b>Local Co-ordinate Reference:</b>	Well RG 13-7-297 - Slot RG 13-7-297
<b>Company:</b>	Terra Energy Partners, LLP	<b>TVD Reference:</b>	KB=30' @ 6633.00usft (H&P #329)
<b>Project:</b>	Rio Blanco County, CO	<b>MD Reference:</b>	KB=30' @ 6633.00usft (H&P #329)
<b>Site:</b>	RGU 23-7-297 Pad	<b>North Reference:</b>	True
<b>Well:</b>	RG 13-7-297	<b>Survey Calculation Method:</b>	Minimum Curvature
<b>Wellbore:</b>	Wellbore #1		
<b>Design:</b>	Plan 3		

Planned Survey									
Measured Depth (usft)	Inclination (°)	Azimuth (°)	Vertical Depth (usft)	+N/-S (usft)	+E/-W (usft)	Vertical Section (usft)	Dogleg Rate (°/100usft)	Build Rate (°/100usft)	Turn Rate (°/100usft)
3,323.40	4.74	327.07	3,313.00	213.75	-138.46	254.68	0.00	0.00	0.00
3,400.00	4.74	327.07	3,389.34	219.06	-141.90	261.00	0.00	0.00	0.00
3,500.00	4.74	327.07	3,489.00	225.99	-146.39	269.26	0.00	0.00	0.00
3,600.00	4.74	327.07	3,588.66	232.92	-150.88	277.51	0.00	0.00	0.00
3,700.00	4.74	327.07	3,688.32	239.85	-155.36	285.77	0.00	0.00	0.00
3,800.00	4.74	327.07	3,787.98	246.77	-159.85	294.02	0.00	0.00	0.00
3,900.00	4.74	327.07	3,887.64	253.70	-164.34	302.28	0.00	0.00	0.00
4,000.00	4.74	327.07	3,987.30	260.63	-168.83	310.53	0.00	0.00	0.00
4,100.00	4.74	327.07	4,086.95	267.56	-173.32	318.79	0.00	0.00	0.00
4,200.00	4.74	327.07	4,186.61	274.49	-177.80	327.05	0.00	0.00	0.00
4,300.00	4.74	327.07	4,286.27	281.42	-182.29	335.30	0.00	0.00	0.00
4,400.00	4.74	327.07	4,385.93	288.35	-186.78	343.56	0.00	0.00	0.00
4,500.00	4.74	327.07	4,485.59	295.27	-191.27	351.81	0.00	0.00	0.00
4,600.00	4.74	327.07	4,585.25	302.20	-195.76	360.07	0.00	0.00	0.00
4,700.00	4.74	327.07	4,684.91	309.13	-200.24	368.32	0.00	0.00	0.00
4,800.00	4.74	327.07	4,784.56	316.06	-204.73	376.58	0.00	0.00	0.00
4,900.00	4.74	327.07	4,884.22	322.99	-209.22	384.83	0.00	0.00	0.00
5,000.00	4.74	327.07	4,983.88	329.92	-213.71	393.09	0.00	0.00	0.00
5,100.00	4.74	327.07	5,083.54	336.85	-218.20	401.34	0.00	0.00	0.00
<b>G_SAND</b>									
5,139.59	4.74	327.07	5,123.00	339.59	-219.97	404.61	0.00	0.00	0.00
5,200.00	4.74	327.07	5,183.20	343.78	-222.68	409.60	0.00	0.00	0.00
5,300.00	4.74	327.07	5,282.86	350.70	-227.17	417.85	0.00	0.00	0.00
5,400.00	4.74	327.07	5,382.52	357.63	-231.66	426.11	0.00	0.00	0.00
<b>FRUN</b>									
5,480.76	4.74	327.07	5,463.00	363.23	-235.29	432.77	0.00	0.00	0.00
5,500.00	4.74	327.07	5,482.18	364.56	-236.15	434.36	0.00	0.00	0.00
5,600.00	4.74	327.07	5,581.83	371.49	-240.64	442.62	0.00	0.00	0.00
5,700.00	4.74	327.07	5,681.49	378.42	-245.13	450.87	0.00	0.00	0.00
5,800.00	4.74	327.07	5,781.15	385.35	-249.61	459.13	0.00	0.00	0.00
5,900.00	4.74	327.07	5,880.81	392.28	-254.10	467.38	0.00	0.00	0.00
6,000.00	4.74	327.07	5,980.47	399.20	-258.59	475.64	0.00	0.00	0.00
6,100.00	4.74	327.07	6,080.13	406.13	-263.08	483.89	0.00	0.00	0.00
6,200.00	4.74	327.07	6,179.79	413.06	-267.57	492.15	0.00	0.00	0.00
6,300.00	4.74	327.07	6,279.44	419.99	-272.05	500.40	0.00	0.00	0.00
6,400.00	4.74	327.07	6,379.10	426.92	-276.54	508.66	0.00	0.00	0.00
6,500.00	4.74	327.07	6,478.76	433.85	-281.03	516.91	0.00	0.00	0.00
6,600.00	4.74	327.07	6,578.42	440.78	-285.52	525.17	0.00	0.00	0.00
6,700.00	4.74	327.07	6,678.08	447.70	-290.01	533.43	0.00	0.00	0.00
6,800.00	4.74	327.07	6,777.74	454.63	-294.49	541.68	0.00	0.00	0.00
<b>MVRD</b>									
6,825.35	4.74	327.07	6,803.00	456.39	-295.63	543.77	0.00	0.00	0.00
6,900.00	4.74	327.07	6,877.40	461.56	-298.98	549.94	0.00	0.00	0.00
7,000.00	4.74	327.07	6,977.06	468.49	-303.47	558.19	0.00	0.00	0.00
7,100.00	4.74	327.07	7,076.71	475.42	-307.96	566.45	0.00	0.00	0.00
7,200.00	4.74	327.07	7,176.37	482.35	-312.45	574.70	0.00	0.00	0.00
7,300.00	4.74	327.07	7,276.03	489.28	-316.93	582.96	0.00	0.00	0.00
7,400.00	4.74	327.07	7,375.69	496.20	-321.42	591.21	0.00	0.00	0.00
7,500.00	4.74	327.07	7,475.35	503.13	-325.91	599.47	0.00	0.00	0.00
7,600.00	4.74	327.07	7,575.01	510.06	-330.40	607.72	0.00	0.00	0.00
7,700.00	4.74	327.07	7,674.67	516.99	-334.89	615.98	0.00	0.00	0.00
<b>Start Drop -1.50</b>									
7,773.26	4.74	327.07	7,747.67	522.07	-338.18	622.02	0.00	0.00	0.00

<b>Database:</b>	EDM 5000.1 Single User Db	<b>Local Co-ordinate Reference:</b>	Well RG 13-7-297 - Slot RG 13-7-297
<b>Company:</b>	Terra Energy Partners, LLP	<b>TVD Reference:</b>	KB=30' @ 6633.00usft (H&P #329)
<b>Project:</b>	Rio Blanco County, CO	<b>MD Reference:</b>	KB=30' @ 6633.00usft (H&P #329)
<b>Site:</b>	RGU 23-7-297 Pad	<b>North Reference:</b>	True
<b>Well:</b>	RG 13-7-297	<b>Survey Calculation Method:</b>	Minimum Curvature
<b>Wellbore:</b>	Wellbore #1		
<b>Design:</b>	Plan 3		

Planned Survey									
Measured Depth (usft)	Inclination (°)	Azimuth (°)	Vertical Depth (usft)	+N/-S (usft)	+E/-W (usft)	Vertical Section (usft)	Dogleg Rate (°/100usft)	Build Rate (°/100usft)	Turn Rate (°/100usft)
7,800.00	4.33	327.07	7,774.33	523.84	-339.32	624.14	1.50	-1.50	0.00
7,900.00	2.83	327.07	7,874.13	529.09	-342.72	630.39	1.50	-1.50	0.00
8,000.00	1.33	327.07	7,974.07	532.14	-344.70	634.03	1.50	-1.50	0.00
<b>Start 3660.00 hold at 8088.94 MD - KLVGAS</b>									
8,088.94	0.00	0.00	8,063.00	533.01	-345.26	635.06	1.50	-1.50	0.00
8,100.00	0.00	0.00	8,074.06	533.01	-345.26	635.06	0.00	0.00	0.00
8,200.00	0.00	0.00	8,174.06	533.01	-345.26	635.06	0.00	0.00	0.00
8,300.00	0.00	0.00	8,274.06	533.01	-345.26	635.06	0.00	0.00	0.00
8,400.00	0.00	0.00	8,374.06	533.01	-345.26	635.06	0.00	0.00	0.00
8,500.00	0.00	0.00	8,474.06	533.01	-345.26	635.06	0.00	0.00	0.00
8,600.00	0.00	0.00	8,574.06	533.01	-345.26	635.06	0.00	0.00	0.00
8,700.00	0.00	0.00	8,674.06	533.01	-345.26	635.06	0.00	0.00	0.00
8,800.00	0.00	0.00	8,774.06	533.01	-345.26	635.06	0.00	0.00	0.00
8,900.00	0.00	0.00	8,874.06	533.01	-345.26	635.06	0.00	0.00	0.00
9,000.00	0.00	0.00	8,974.06	533.01	-345.26	635.06	0.00	0.00	0.00
9,100.00	0.00	0.00	9,074.06	533.01	-345.26	635.06	0.00	0.00	0.00
9,200.00	0.00	0.00	9,174.06	533.01	-345.26	635.06	0.00	0.00	0.00
9,300.00	0.00	0.00	9,274.06	533.01	-345.26	635.06	0.00	0.00	0.00
9,400.00	0.00	0.00	9,374.06	533.01	-345.26	635.06	0.00	0.00	0.00
9,500.00	0.00	0.00	9,474.06	533.01	-345.26	635.06	0.00	0.00	0.00
9,600.00	0.00	0.00	9,574.06	533.01	-345.26	635.06	0.00	0.00	0.00
9,700.00	0.00	0.00	9,674.06	533.01	-345.26	635.06	0.00	0.00	0.00
9,800.00	0.00	0.00	9,774.06	533.01	-345.26	635.06	0.00	0.00	0.00
9,900.00	0.00	0.00	9,874.06	533.01	-345.26	635.06	0.00	0.00	0.00
10,000.00	0.00	0.00	9,974.06	533.01	-345.26	635.06	0.00	0.00	0.00
10,100.00	0.00	0.00	10,074.06	533.01	-345.26	635.06	0.00	0.00	0.00
10,200.00	0.00	0.00	10,174.06	533.01	-345.26	635.06	0.00	0.00	0.00
<b>CMEQ*</b>									
10,238.94	0.00	0.00	10,213.00	533.01	-345.26	635.06	0.00	0.00	0.00
10,300.00	0.00	0.00	10,274.06	533.01	-345.26	635.06	0.00	0.00	0.00
10,400.00	0.00	0.00	10,374.06	533.01	-345.26	635.06	0.00	0.00	0.00
10,500.00	0.00	0.00	10,474.06	533.01	-345.26	635.06	0.00	0.00	0.00
10,600.00	0.00	0.00	10,574.06	533.01	-345.26	635.06	0.00	0.00	0.00
10,700.00	0.00	0.00	10,674.06	533.01	-345.26	635.06	0.00	0.00	0.00
<b>RLNS</b>									
10,758.94	0.00	0.00	10,733.00	533.01	-345.26	635.06	0.00	0.00	0.00
10,800.00	0.00	0.00	10,774.06	533.01	-345.26	635.06	0.00	0.00	0.00
10,900.00	0.00	0.00	10,874.06	533.01	-345.26	635.06	0.00	0.00	0.00
<b>CZZT</b>									
10,908.94	0.00	0.00	10,883.00	533.01	-345.26	635.06	0.00	0.00	0.00
11,000.00	0.00	0.00	10,974.06	533.01	-345.26	635.06	0.00	0.00	0.00
11,100.00	0.00	0.00	11,074.06	533.01	-345.26	635.06	0.00	0.00	0.00
<b>CRCN</b>									
11,128.94	0.00	0.00	11,103.00	533.01	-345.26	635.06	0.00	0.00	0.00
11,200.00	0.00	0.00	11,174.06	533.01	-345.26	635.06	0.00	0.00	0.00
11,300.00	0.00	0.00	11,274.06	533.01	-345.26	635.06	0.00	0.00	0.00
11,400.00	0.00	0.00	11,374.06	533.01	-345.26	635.06	0.00	0.00	0.00
<b>SEGO_UPPER</b>									
11,478.94	0.00	0.00	11,453.00	533.01	-345.26	635.06	0.00	0.00	0.00
11,500.00	0.00	0.00	11,474.06	533.01	-345.26	635.06	0.00	0.00	0.00
11,600.00	0.00	0.00	11,574.06	533.01	-345.26	635.06	0.00	0.00	0.00
<b>SEGO_LOWER</b>									
11,648.94	0.00	0.00	11,623.00	533.01	-345.26	635.06	0.00	0.00	0.00

<b>Database:</b>	EDM 5000.1 Single User Db	<b>Local Co-ordinate Reference:</b>	Well RG 13-7-297 - Slot RG 13-7-297
<b>Company:</b>	Terra Energy Partners, LLP	<b>TVD Reference:</b>	KB=30' @ 6633.00usft (H&P #329)
<b>Project:</b>	Rio Blanco County, CO	<b>MD Reference:</b>	KB=30' @ 6633.00usft (H&P #329)
<b>Site:</b>	RGU 23-7-297 Pad	<b>North Reference:</b>	True
<b>Well:</b>	RG 13-7-297	<b>Survey Calculation Method:</b>	Minimum Curvature
<b>Wellbore:</b>	Wellbore #1		
<b>Design:</b>	Plan 3		

Planned Survey									
Measured Depth (usft)	Inclination (°)	Azimuth (°)	Vertical Depth (usft)	+N/-S (usft)	+E/-W (usft)	Vertical Section (usft)	Dogleg Rate (°/100usft)	Build Rate (°/100usft)	Turn Rate (°/100usft)
11,700.00	0.00	0.00	11,674.06	533.01	-345.26	635.06	0.00	0.00	0.00
TD at 11748.94 - TD									
11,748.94	0.00	0.00	11,723.00	533.01	-345.26	635.06	0.00	0.00	0.00

Design Targets									
Target Name	Dip Angle (°)	Dip Dir. (°)	TVD (usft)	+N/-S (usft)	+E/-W (usft)	Northing (usft)	Easting (usft)	Latitude	Longitude
- hit/miss target									
- Shape									
RG 13-7-297 - KMG Gas	0.00	0.00	8,063.00	533.01	-345.26	1,761,431.40	2,205,891.60	39.889983	-108.330286
- plan hits target center									
- Circle (radius 50.00)									
RG 13-7-297 - PBHL	0.00	0.00	11,723.00	533.01	-345.26	1,761,431.40	2,205,891.60	39.889983	-108.330286
- plan hits target center									
- Point									

Casing Points						Casing Diameter (")	Hole Diameter (")
Measured Depth (usft)	Vertical Depth (usft)	Name					
1,416.89	1,413.00	13 3/8" Surface Casing				13-3/8	17-1/2
3,323.40	3,313.00	9 5/8" Intermediate Casing				9-5/8	12-1/4

Formations						
Measured Depth (usft)	Vertical Depth (usft)	Name	Lithology	Dip (°)	Dip Direction (°)	
935.24	933.00	GRRV				
1,090.77	1,088.00	GRRV_A_GROOVE				
1,281.43	1,278.00	GRRV_B_GROOVE				
1,617.57	1,613.00	GRRV DISSOLUTION_SURF				
2,590.90	2,583.00	GRRV_ORANGE				
2,821.68	2,813.00	WSTC				
5,139.59	5,123.00	G_SAND				
5,480.76	5,463.00	FRUN				
6,825.35	6,803.00	MVRD				
8,088.94	8,063.00	KMVGAS				
10,238.94	10,213.00	CMEO*				
10,758.94	10,733.00	RLNS				
10,908.94	10,883.00	CZZT				
11,128.94	11,103.00	CRCN				
11,478.94	11,453.00	SEGO_UPPER				
11,648.94	11,623.00	SEGO_LOWER				
11,748.94	11,723.00	TD				

<b>Database:</b>	EDM 5000.1 Single User Db	<b>Local Co-ordinate Reference:</b>	Well RG 13-7-297 - Slot RG 13-7-297
<b>Company:</b>	Terra Energy Partners, LLP	<b>TVD Reference:</b>	KB=30' @ 6633.00usft (H&P #329)
<b>Project:</b>	Rio Blanco County, CO	<b>MD Reference:</b>	KB=30' @ 6633.00usft (H&P #329)
<b>Site:</b>	RGU 23-7-297 Pad	<b>North Reference:</b>	True
<b>Well:</b>	RG 13-7-297	<b>Survey Calculation Method:</b>	Minimum Curvature
<b>Wellbore:</b>	Wellbore #1		
<b>Design:</b>	Plan 3		

Plan Annotations				
Measured Depth (usft)	Vertical Depth (usft)	Local Coordinates		Comment
		+N/-S (usft)	+E/-W (usft)	
120.00	120.00	0.00	0.00	Start Build 2.00
356.76	356.49	8.21	-5.32	Start 7416.49 hold at 356.76 MD
7,773.26	7,747.67	522.07	-338.18	Start Drop -1.50
8,088.94	8,063.00	533.01	-345.26	Start 3660.00 hold at 8088.94 MD
11,748.94	11,723.00	533.01	-345.26	TD at 11748.94