

## PROJECT DETAILS: Rio Blanco County, CO

Geodetic System: US State Plane 1983  
Datum: North American Datum 1983  
Ellipsoid: GRS 1980  
Zone: Colorado Central Zone  
System Datum: Mean Sea Level

## REFERENCE INFORMATION

Co-ordinate (N/E) Reference: Well RG 414-7-297 - Slot RG 414-7-297, True North  
Vertical (TVD) Reference: KB=30' @ 6633.00usft (H&P #329)  
Section (VS) Reference: Slot - RG 414-7-297(0.00N, 0.00E)  
Measured Depth Reference: KB=30' @ 6633.00usft (H&P #329)  
Calculation Method: Minimum Curvature

## WELLBORE TARGET DETAILS (MAP CO-ORDINATES AND LAT/LONG)

Name	TVD	+N/-S	+E/-W	Northing	Easting	Latitude	Longitude	Shape
RG 414-7-297 - KMV Gas	7963.00	-1167.46	-356.42	1759723.70	2205818.30	39.885291	-108.330357	Circle (Radius: 50.00)
RG 414-7-297 - PBHL	11623.00	-1167.46	-356.42	1759723.70	2205818.30	39.885291	-108.330357	Point

## ANNOTATIONS

MD	Inc	Azi	TVD	+N/-S	+E/-W	VSec	Departure	Annotation
120.00	0.00	0.00	120.00	0.00	0.00	0.00	0.00	Start Build 2.00
595.47	9.51	196.98	593.29	-37.65	-11.49	39.37	39.37	Start 6832.54 hold at 595.47 MD
7428.01	9.51	196.98	7331.94	-1117.26	-341.10	1168.17	1168.17	Start Drop -1.50
8061.98	0.00	0.00	7963.00	-1167.46	-356.42	1220.66	1220.66	Start 3654.00 hold at 8061.98 MD
11715.98	0.00	0.00	11617.00	-1167.46	-356.42	1220.66	1220.66	TD at 11715.98

## WELL DETAILS: RG 414-7-297

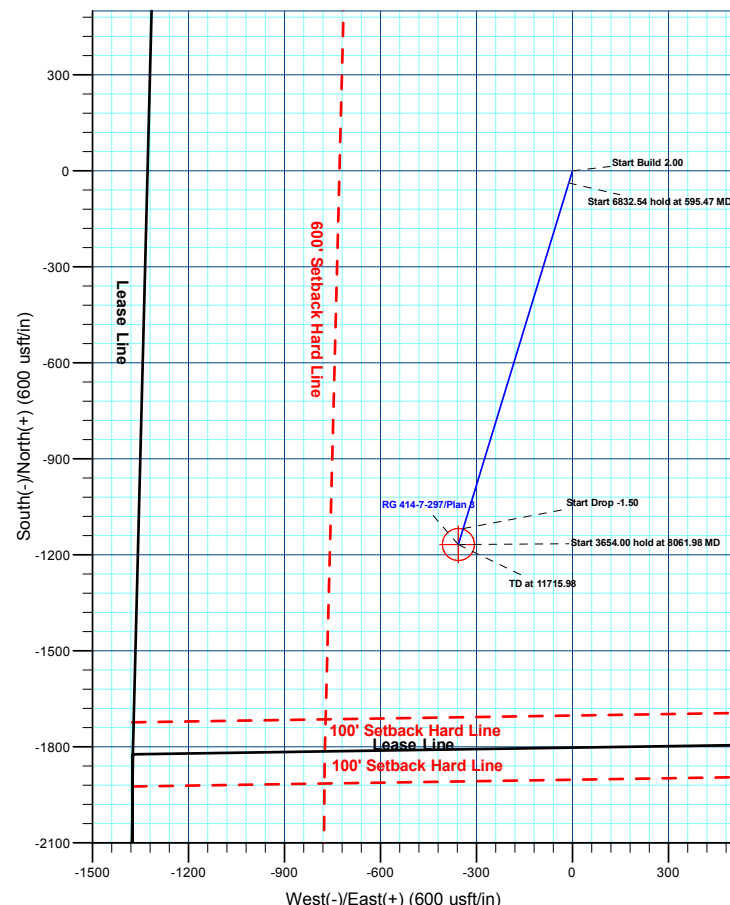
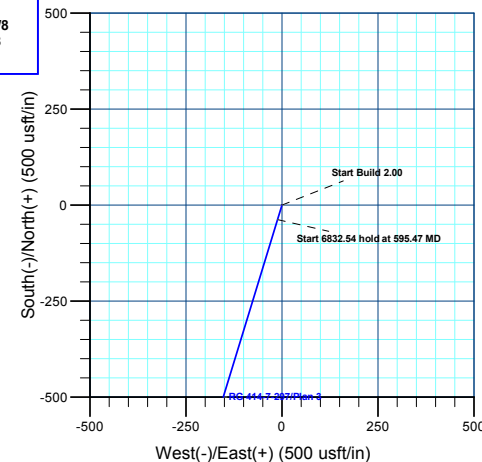
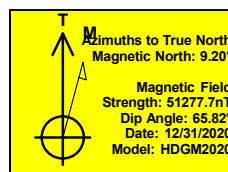
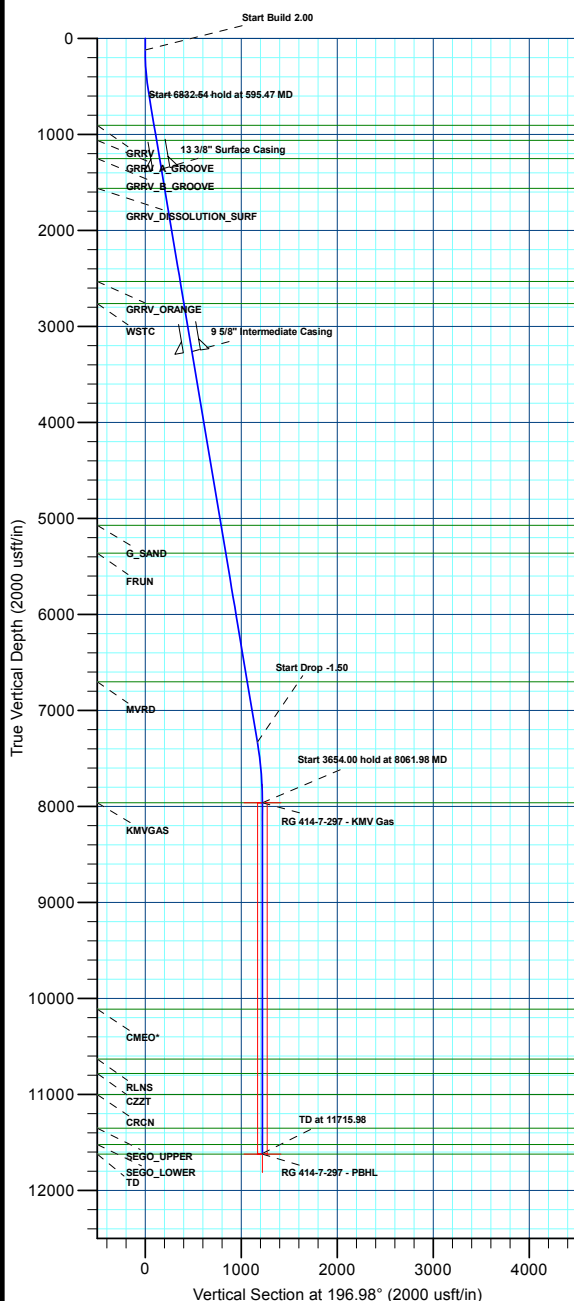
+N/-S	+E/-W	Northing	Ground Elev.	Latitude	Longitude	Slot
0.00	0.00	1760879.50	6603.00	39.888495	-108.329087	RG 414-7-297

## CASING DETAILS

TVD	MD	Name	Size
1363.00	1375.90	13 3/8" Surface Casing	13-3/8
3263.00	3302.38	5/8" Intermediate Casing	9-5/8

## FORMATION TOP DETAILS

TVDPath	MDPath	Formation
908.00	914.56	GRRV
1063.00	1071.72	GRRV_A_GROOVE
1253.00	1264.37	GRRV_B_GROOVE
1563.00	1578.69	GRRV DISSOLUTION_SURF
2533.00	2562.21	GRRV_ORANGE
2763.00	2795.41	WSTC
5073.00	5137.60	G_SAND
5363.00	5431.64	FRUN
6703.00	6790.31	MVRD
7963.00	8061.98	KMV GAS
10113.00	10211.98	CMEQ*
10633.00	10731.98	RLNS
10783.00	10881.98	CZT
11003.00	11101.98	CRGN
11353.00	11451.98	SEGO_UPPER
11523.00	11621.98	SEGO_LOWER



Plan: Plan 3 (RG 414-7-297/Wellbore #1)

Created By: Chase Chambers Date: 15:11, April 06 2022



## **Terra Energy Partners, LLP**

**Rio Blanco County, CO**

**RGU 23-7-297 Pad**

**RG 414-7-297 - Slot RG 414-7-297**

**Wellbore #1**

**Plan: Plan 3**

## **KLX Well Planning Report**

**22 March, 2022**



<b>Database:</b>	EDM 5000.1 Single User Db	<b>Local Co-ordinate Reference:</b>	Well RG 414-7-297 - Slot RG 414-7-297
<b>Company:</b>	Terra Energy Partners, LLP	<b>TVD Reference:</b>	KB=30' @ 6633.00usft (H&P #329)
<b>Project:</b>	Rio Blanco County, CO	<b>MD Reference:</b>	KB=30' @ 6633.00usft (H&P #329)
<b>Site:</b>	RGU 23-7-297 Pad	<b>North Reference:</b>	True
<b>Well:</b>	RG 414-7-297	<b>Survey Calculation Method:</b>	Minimum Curvature
<b>Wellbore:</b>	Wellbore #1		
<b>Design:</b>	Plan 3		

<b>Project</b>	Rio Blanco County, CO		
<b>Map System:</b>	US State Plane 1983	<b>System Datum:</b>	Mean Sea Level
<b>Geo Datum:</b>	North American Datum 1983		
<b>Map Zone:</b>	Colorado Central Zone		

Site		RGU 23-7-297 Pad			
Site Position:		Northing:	1,760,880.90 usft	Latitude:	39.888499
From:	Map	Easting:	2,206,203.50 usft	Longitude:	-108.329114
Position Uncertainty:	0.00 usft	Slot Radius:	13-3/16 "	Grid Convergence:	-1.78

Well	RG 414-7-297 - Slot RG 414-7-297					
Well Position	+N/-S	-1.17 usft	Northing:	1,760,879.50 usft	Latitude:	39.888496
	+E/-W	7.44 usft	Easting:	2,206,210.90 usft	Longitude:	-108.329088
Position Uncertainty		0.00 usft	Wellhead Elevation:		Ground Level:	6,603.00 usft

<b>Wellbore</b>	Wellbore #1				
<b>Magnetics</b>	<b>Model Name</b>	<b>Sample Date</b>	<b>Declination (°)</b>	<b>Dip Angle (°)</b>	<b>Field Strength (nT)</b>
	HDGM2020	12/31/2020	9.20	65.82	51,277.70000000

<b>Design</b>	Plan 3			
<b>Audit Notes:</b>				
<b>Version:</b>	<b>Phase:</b>	PLAN	<b>Tie On Depth:</b>	0.00
<b>Vertical Section:</b>	<b>Depth From (TVD) (usft)</b>	<b>+N/-S (usft)</b>	<b>+E/-W (usft)</b>	<b>Direction (°)</b>
	0.00	0.00	0.00	196.98

<b>Plan Sections</b>										
Measured Depth (usft)	Inclination (°)	Azimuth (°)	Vertical Depth (usft)	+N/-S (usft)	+E/-W (usft)	Dogleg Rate (°/100usft)	Build Rate (°/100usft)	Turn Rate (°/100usft)	TFO (°)	Target
0.00	0.00	0.00	0.00	0.00	0.00	0.00	0.00	0.00	0.00	
120.00	0.00	0.00	120.00	0.00	0.00	0.00	0.00	0.00	0.00	
595.47	9.51	196.98	593.29	-37.65	-11.49	2.00	2.00	0.00	196.98	
7,428.01	9.51	196.98	7,331.95	-1,117.26	-341.10	0.00	0.00	0.00	0.00	
8,061.98	0.00	0.00	7,963.00	-1,167.46	-356.42	1.50	-1.50	0.00	180.00	RG 414-7-297 - KMV
11,715.98	0.00	0.00	11,617.00	-1,167.46	-356.42	0.00	0.00	0.00	0.00	

<b>Database:</b>	EDM 5000.1 Single User Db	<b>Local Co-ordinate Reference:</b>	Well RG 414-7-297 - Slot RG 414-7-297
<b>Company:</b>	Terra Energy Partners, LLP	<b>TVD Reference:</b>	KB=30' @ 6633.00usft (H&P #329)
<b>Project:</b>	Rio Blanco County, CO	<b>MD Reference:</b>	KB=30' @ 6633.00usft (H&P #329)
<b>Site:</b>	RGU 23-7-297 Pad	<b>North Reference:</b>	True
<b>Well:</b>	RG 414-7-297	<b>Survey Calculation Method:</b>	Minimum Curvature
<b>Wellbore:</b>	Wellbore #1		
<b>Design:</b>	Plan 3		

Planned Survey									
Measured Depth (usft)	Inclination (°)	Azimuth (°)	Vertical Depth (usft)	+N/-S (usft)	+E/-W (usft)	Vertical Section (usft)	Dogleg Rate (°/100usft)	Build Rate (°/100usft)	Turn Rate (°/100usft)
0.00	0.00	0.00	0.00	0.00	0.00	0.00	0.00	0.00	0.00
100.00	0.00	0.00	100.00	0.00	0.00	0.00	0.00	0.00	0.00
<b>Start Build 2.00</b>									
120.00	0.00	0.00	120.00	0.00	0.00	0.00	0.00	0.00	0.00
200.00	1.60	196.98	199.99	-1.07	-0.33	1.12	2.00	2.00	0.00
300.00	3.60	196.98	299.88	-5.41	-1.65	5.65	2.00	2.00	0.00
400.00	5.60	196.98	399.55	-13.08	-3.99	13.67	2.00	2.00	0.00
500.00	7.60	196.98	498.89	-24.07	-7.35	25.17	2.00	2.00	0.00
<b>Start 6832.54 hold at 595.47 MD</b>									
595.47	9.51	196.98	593.29	-37.65	-11.49	39.37	2.00	2.00	0.00
600.00	9.51	196.98	597.76	-38.37	-11.71	40.11	0.00	0.00	0.00
700.00	9.51	196.98	696.38	-54.17	-16.54	56.64	0.00	0.00	0.00
800.00	9.51	196.98	795.01	-69.97	-21.36	73.16	0.00	0.00	0.00
900.00	9.51	196.98	893.64	-85.77	-26.19	89.68	0.00	0.00	0.00
<b>GRRV</b>									
914.56	9.51	196.98	908.00	-88.07	-26.89	92.08	0.00	0.00	0.00
1,000.00	9.51	196.98	992.26	-101.57	-31.01	106.20	0.00	0.00	0.00
<b>GRRV_A_GROOVE</b>									
1,071.72	9.51	196.98	1,063.00	-112.90	-34.47	118.05	0.00	0.00	0.00
1,100.00	9.51	196.98	1,090.89	-117.37	-35.83	122.72	0.00	0.00	0.00
1,200.00	9.51	196.98	1,189.51	-133.17	-40.66	139.24	0.00	0.00	0.00
<b>GRRV_B_GROOVE</b>									
1,264.37	9.51	196.98	1,253.00	-143.34	-43.76	149.88	0.00	0.00	0.00
1,300.00	9.51	196.98	1,288.14	-148.97	-45.48	155.76	0.00	0.00	0.00
<b>13 3/8" Surface Casing</b>									
1,375.90	9.51	196.98	1,363.00	-160.97	-49.14	168.30	0.00	0.00	0.00
1,400.00	9.51	196.98	1,386.76	-164.77	-50.31	172.28	0.00	0.00	0.00
1,500.00	9.51	196.98	1,485.39	-180.58	-55.13	188.80	0.00	0.00	0.00
<b>GRRV DISSOLUTION_SURF</b>									
1,578.69	9.51	196.98	1,563.00	-193.01	-58.93	201.80	0.00	0.00	0.00
1,600.00	9.51	196.98	1,584.02	-196.38	-59.95	205.32	0.00	0.00	0.00
1,700.00	9.51	196.98	1,682.64	-212.18	-64.78	221.85	0.00	0.00	0.00
1,800.00	9.51	196.98	1,781.27	-227.98	-69.60	238.37	0.00	0.00	0.00
1,900.00	9.51	196.98	1,879.89	-243.78	-74.43	254.89	0.00	0.00	0.00
2,000.00	9.51	196.98	1,978.52	-259.58	-79.25	271.41	0.00	0.00	0.00
2,100.00	9.51	196.98	2,077.15	-275.38	-84.07	287.93	0.00	0.00	0.00
2,200.00	9.51	196.98	2,175.77	-291.18	-88.90	304.45	0.00	0.00	0.00
2,300.00	9.51	196.98	2,274.40	-306.98	-93.72	320.97	0.00	0.00	0.00
2,400.00	9.51	196.98	2,373.02	-322.78	-98.54	337.49	0.00	0.00	0.00
2,500.00	9.51	196.98	2,471.65	-338.59	-103.37	354.01	0.00	0.00	0.00
<b>GRRV_ORANGE</b>									
2,562.21	9.51	196.98	2,533.00	-348.42	-106.37	364.29	0.00	0.00	0.00
2,600.00	9.51	196.98	2,570.27	-354.39	-108.19	370.53	0.00	0.00	0.00
2,700.00	9.51	196.98	2,668.90	-370.19	-113.02	387.06	0.00	0.00	0.00
<b>WSTC</b>									
2,795.41	9.51	196.98	2,763.00	-385.26	-117.62	402.82	0.00	0.00	0.00
2,800.00	9.51	196.98	2,767.53	-385.99	-117.84	403.58	0.00	0.00	0.00
2,900.00	9.51	196.98	2,866.15	-401.79	-122.66	420.10	0.00	0.00	0.00
3,000.00	9.51	196.98	2,964.78	-417.59	-127.49	436.62	0.00	0.00	0.00
3,100.00	9.51	196.98	3,063.40	-433.39	-132.31	453.14	0.00	0.00	0.00
3,200.00	9.51	196.98	3,162.03	-449.19	-137.14	469.66	0.00	0.00	0.00
3,300.00	9.51	196.98	3,260.66	-464.99	-141.96	486.18	0.00	0.00	0.00
<b>9 5/8" Intermediate Casing</b>									

<b>Database:</b>	EDM 5000.1 Single User Db	<b>Local Co-ordinate Reference:</b>	Well RG 414-7-297 - Slot RG 414-7-297
<b>Company:</b>	Terra Energy Partners, LLP	<b>TVD Reference:</b>	KB=30' @ 6633.00usft (H&P #329)
<b>Project:</b>	Rio Blanco County, CO	<b>MD Reference:</b>	KB=30' @ 6633.00usft (H&P #329)
<b>Site:</b>	RGU 23-7-297 Pad	<b>North Reference:</b>	True
<b>Well:</b>	RG 414-7-297	<b>Survey Calculation Method:</b>	Minimum Curvature
<b>Wellbore:</b>	Wellbore #1		
<b>Design:</b>	Plan 3		

Planned Survey									
Measured Depth (usft)	Inclination (°)	Azimuth (°)	Vertical Depth (usft)	+N/-S (usft)	+E/-W (usft)	Vertical Section (usft)	Dogleg Rate (°/100usft)	Build Rate (°/100usft)	Turn Rate (°/100usft)
3,302.38	9.51	196.98	3,263.00	-465.37	-142.08	486.57	0.00	0.00	0.00
3,400.00	9.51	196.98	3,359.28	-480.80	-146.78	502.70	0.00	0.00	0.00
3,500.00	9.51	196.98	3,457.91	-496.60	-151.61	519.22	0.00	0.00	0.00
3,600.00	9.51	196.98	3,556.53	-512.40	-156.43	535.74	0.00	0.00	0.00
3,700.00	9.51	196.98	3,655.16	-528.20	-161.26	552.27	0.00	0.00	0.00
3,800.00	9.51	196.98	3,753.78	-544.00	-166.08	568.79	0.00	0.00	0.00
3,900.00	9.51	196.98	3,852.41	-559.80	-170.90	585.31	0.00	0.00	0.00
4,000.00	9.51	196.98	3,951.04	-575.60	-175.73	601.83	0.00	0.00	0.00
4,100.00	9.51	196.98	4,049.66	-591.40	-180.55	618.35	0.00	0.00	0.00
4,200.00	9.51	196.98	4,148.29	-607.20	-185.38	634.87	0.00	0.00	0.00
4,300.00	9.51	196.98	4,246.91	-623.00	-190.20	651.39	0.00	0.00	0.00
4,400.00	9.51	196.98	4,345.54	-638.81	-195.02	667.91	0.00	0.00	0.00
4,500.00	9.51	196.98	4,444.17	-654.61	-199.85	684.43	0.00	0.00	0.00
4,600.00	9.51	196.98	4,542.79	-670.41	-204.67	700.95	0.00	0.00	0.00
4,700.00	9.51	196.98	4,641.42	-686.21	-209.50	717.48	0.00	0.00	0.00
4,800.00	9.51	196.98	4,740.04	-702.01	-214.32	734.00	0.00	0.00	0.00
4,900.00	9.51	196.98	4,838.67	-717.81	-219.14	750.52	0.00	0.00	0.00
5,000.00	9.51	196.98	4,937.30	-733.61	-223.97	767.04	0.00	0.00	0.00
5,100.00	9.51	196.98	5,035.92	-749.41	-228.79	783.56	0.00	0.00	0.00
<b>G_SAND</b>									
5,137.60	9.51	196.98	5,073.00	-755.35	-230.61	789.77	0.00	0.00	0.00
5,200.00	9.51	196.98	5,134.55	-765.21	-233.62	800.08	0.00	0.00	0.00
5,300.00	9.51	196.98	5,233.17	-781.01	-238.44	816.60	0.00	0.00	0.00
5,400.00	9.51	196.98	5,331.80	-796.82	-243.26	833.12	0.00	0.00	0.00
<b>FRUN</b>									
5,431.64	9.51	196.98	5,363.00	-801.81	-244.79	838.35	0.00	0.00	0.00
5,500.00	9.51	196.98	5,430.42	-812.62	-248.09	849.64	0.00	0.00	0.00
5,600.00	9.51	196.98	5,529.05	-828.42	-252.91	866.16	0.00	0.00	0.00
5,700.00	9.51	196.98	5,627.68	-844.22	-257.74	882.69	0.00	0.00	0.00
5,800.00	9.51	196.98	5,726.30	-860.02	-262.56	899.21	0.00	0.00	0.00
5,900.00	9.51	196.98	5,824.93	-875.82	-267.38	915.73	0.00	0.00	0.00
6,000.00	9.51	196.98	5,923.55	-891.62	-272.21	932.25	0.00	0.00	0.00
6,100.00	9.51	196.98	6,022.18	-907.42	-277.03	948.77	0.00	0.00	0.00
6,200.00	9.51	196.98	6,120.81	-923.22	-281.86	965.29	0.00	0.00	0.00
6,300.00	9.51	196.98	6,219.43	-939.02	-286.68	981.81	0.00	0.00	0.00
6,400.00	9.51	196.98	6,318.06	-954.83	-291.50	998.33	0.00	0.00	0.00
6,500.00	9.51	196.98	6,416.68	-970.63	-296.33	1,014.85	0.00	0.00	0.00
6,600.00	9.51	196.98	6,515.31	-986.43	-301.15	1,031.37	0.00	0.00	0.00
6,700.00	9.51	196.98	6,613.93	-1,002.23	-305.98	1,047.89	0.00	0.00	0.00
<b>MVRD</b>									
6,790.31	9.51	196.98	6,703.00	-1,016.50	-310.33	1,062.81	0.00	0.00	0.00
6,800.00	9.51	196.98	6,712.56	-1,018.03	-310.80	1,064.42	0.00	0.00	0.00
6,900.00	9.51	196.98	6,811.19	-1,033.83	-315.62	1,080.94	0.00	0.00	0.00
7,000.00	9.51	196.98	6,909.81	-1,049.63	-320.45	1,097.46	0.00	0.00	0.00
7,100.00	9.51	196.98	7,008.44	-1,065.43	-325.27	1,113.98	0.00	0.00	0.00
7,200.00	9.51	196.98	7,107.06	-1,081.23	-330.10	1,130.50	0.00	0.00	0.00
7,300.00	9.51	196.98	7,205.69	-1,097.03	-334.92	1,147.02	0.00	0.00	0.00
7,400.00	9.51	196.98	7,304.32	-1,112.84	-339.74	1,163.54	0.00	0.00	0.00
<b>Start Drop -1.50</b>									
7,428.01	9.51	196.98	7,331.95	-1,117.26	-341.10	1,168.17	0.00	0.00	0.00
7,500.00	8.43	196.98	7,403.05	-1,128.00	-344.37	1,179.39	1.50	-1.50	0.00
7,600.00	6.93	196.98	7,502.15	-1,140.78	-348.27	1,192.76	1.50	-1.50	0.00
7,700.00	5.43	196.98	7,601.57	-1,151.07	-351.42	1,203.52	1.50	-1.50	0.00

<b>Database:</b>	EDM 5000.1 Single User Db	<b>Local Co-ordinate Reference:</b>	Well RG 414-7-297 - Slot RG 414-7-297
<b>Company:</b>	Terra Energy Partners, LLP	<b>TVD Reference:</b>	KB=30' @ 6633.00usft (H&P #329)
<b>Project:</b>	Rio Blanco County, CO	<b>MD Reference:</b>	KB=30' @ 6633.00usft (H&P #329)
<b>Site:</b>	RGU 23-7-297 Pad	<b>North Reference:</b>	True
<b>Well:</b>	RG 414-7-297	<b>Survey Calculation Method:</b>	Minimum Curvature
<b>Wellbore:</b>	Wellbore #1		
<b>Design:</b>	Plan 3		

Planned Survey									
Measured Depth (usft)	Inclination (°)	Azimuth (°)	Vertical Depth (usft)	+N/-S (usft)	+E/-W (usft)	Vertical Section (usft)	Dogleg Rate (°/100usft)	Build Rate (°/100usft)	Turn Rate (°/100usft)
7,800.00	3.93	196.98	7,701.23	-1,158.87	-353.80	1,211.68	1.50	-1.50	0.00
7,900.00	2.43	196.98	7,801.07	-1,164.18	-355.42	1,217.23	1.50	-1.50	0.00
8,000.00	0.93	196.98	7,901.03	-1,166.98	-356.28	1,220.16	1.50	-1.50	0.00
<b>Start 3654.00 hold at 8061.98 MD - KMGAS</b>									
8,061.98	0.00	0.00	7,963.00	-1,167.46	-356.42	1,220.66	1.50	-1.50	0.00
8,100.00	0.00	0.00	8,001.02	-1,167.46	-356.42	1,220.66	0.00	0.00	0.00
8,200.00	0.00	0.00	8,101.02	-1,167.46	-356.42	1,220.66	0.00	0.00	0.00
8,300.00	0.00	0.00	8,201.02	-1,167.46	-356.42	1,220.66	0.00	0.00	0.00
8,400.00	0.00	0.00	8,301.02	-1,167.46	-356.42	1,220.66	0.00	0.00	0.00
8,500.00	0.00	0.00	8,401.02	-1,167.46	-356.42	1,220.66	0.00	0.00	0.00
8,600.00	0.00	0.00	8,501.02	-1,167.46	-356.42	1,220.66	0.00	0.00	0.00
8,700.00	0.00	0.00	8,601.02	-1,167.46	-356.42	1,220.66	0.00	0.00	0.00
8,800.00	0.00	0.00	8,701.02	-1,167.46	-356.42	1,220.66	0.00	0.00	0.00
8,900.00	0.00	0.00	8,801.02	-1,167.46	-356.42	1,220.66	0.00	0.00	0.00
9,000.00	0.00	0.00	8,901.02	-1,167.46	-356.42	1,220.66	0.00	0.00	0.00
9,100.00	0.00	0.00	9,001.02	-1,167.46	-356.42	1,220.66	0.00	0.00	0.00
9,200.00	0.00	0.00	9,101.02	-1,167.46	-356.42	1,220.66	0.00	0.00	0.00
9,300.00	0.00	0.00	9,201.02	-1,167.46	-356.42	1,220.66	0.00	0.00	0.00
9,400.00	0.00	0.00	9,301.02	-1,167.46	-356.42	1,220.66	0.00	0.00	0.00
9,500.00	0.00	0.00	9,401.02	-1,167.46	-356.42	1,220.66	0.00	0.00	0.00
9,600.00	0.00	0.00	9,501.02	-1,167.46	-356.42	1,220.66	0.00	0.00	0.00
9,700.00	0.00	0.00	9,601.02	-1,167.46	-356.42	1,220.66	0.00	0.00	0.00
9,800.00	0.00	0.00	9,701.02	-1,167.46	-356.42	1,220.66	0.00	0.00	0.00
9,900.00	0.00	0.00	9,801.02	-1,167.46	-356.42	1,220.66	0.00	0.00	0.00
10,000.00	0.00	0.00	9,901.02	-1,167.46	-356.42	1,220.66	0.00	0.00	0.00
10,100.00	0.00	0.00	10,001.02	-1,167.46	-356.42	1,220.66	0.00	0.00	0.00
10,200.00	0.00	0.00	10,101.02	-1,167.46	-356.42	1,220.66	0.00	0.00	0.00
<b>CMEO*</b>									
10,211.98	0.00	0.00	10,113.00	-1,167.46	-356.42	1,220.66	0.00	0.00	0.00
10,300.00	0.00	0.00	10,201.02	-1,167.46	-356.42	1,220.66	0.00	0.00	0.00
10,400.00	0.00	0.00	10,301.02	-1,167.46	-356.42	1,220.66	0.00	0.00	0.00
10,500.00	0.00	0.00	10,401.02	-1,167.46	-356.42	1,220.66	0.00	0.00	0.00
10,600.00	0.00	0.00	10,501.02	-1,167.46	-356.42	1,220.66	0.00	0.00	0.00
10,700.00	0.00	0.00	10,601.02	-1,167.46	-356.42	1,220.66	0.00	0.00	0.00
<b>RLNS</b>									
10,731.98	0.00	0.00	10,633.00	-1,167.46	-356.42	1,220.66	0.00	0.00	0.00
10,800.00	0.00	0.00	10,701.02	-1,167.46	-356.42	1,220.66	0.00	0.00	0.00
<b>CZZT</b>									
10,881.98	0.00	0.00	10,783.00	-1,167.46	-356.42	1,220.66	0.00	0.00	0.00
10,900.00	0.00	0.00	10,801.02	-1,167.46	-356.42	1,220.66	0.00	0.00	0.00
11,000.00	0.00	0.00	10,901.02	-1,167.46	-356.42	1,220.66	0.00	0.00	0.00
11,100.00	0.00	0.00	11,001.02	-1,167.46	-356.42	1,220.66	0.00	0.00	0.00
<b>CRCN</b>									
11,101.98	0.00	0.00	11,003.00	-1,167.46	-356.42	1,220.66	0.00	0.00	0.00
11,200.00	0.00	0.00	11,101.02	-1,167.46	-356.42	1,220.66	0.00	0.00	0.00
11,300.00	0.00	0.00	11,201.02	-1,167.46	-356.42	1,220.66	0.00	0.00	0.00
11,400.00	0.00	0.00	11,301.02	-1,167.46	-356.42	1,220.66	0.00	0.00	0.00
<b>SEGO_UPPER</b>									
11,451.98	0.00	0.00	11,353.00	-1,167.46	-356.42	1,220.66	0.00	0.00	0.00
11,500.00	0.00	0.00	11,401.02	-1,167.46	-356.42	1,220.66	0.00	0.00	0.00
11,600.00	0.00	0.00	11,501.02	-1,167.46	-356.42	1,220.66	0.00	0.00	0.00
<b>SEGO_LOWER</b>									
11,621.98	0.00	0.00	11,523.00	-1,167.46	-356.42	1,220.66	0.00	0.00	0.00

<b>Database:</b>	EDM 5000.1 Single User Db	<b>Local Co-ordinate Reference:</b>	Well RG 414-7-297 - Slot RG 414-7-297
<b>Company:</b>	Terra Energy Partners, LLP	<b>TVD Reference:</b>	KB=30' @ 6633.00usft (H&P #329)
<b>Project:</b>	Rio Blanco County, CO	<b>MD Reference:</b>	KB=30' @ 6633.00usft (H&P #329)
<b>Site:</b>	RGU 23-7-297 Pad	<b>North Reference:</b>	True
<b>Well:</b>	RG 414-7-297	<b>Survey Calculation Method:</b>	Minimum Curvature
<b>Wellbore:</b>	Wellbore #1		
<b>Design:</b>	Plan 3		

Planned Survey									
Measured Depth (usft)	Inclination (°)	Azimuth (°)	Vertical Depth (usft)	+N/-S (usft)	+E/-W (usft)	Vertical Section (usft)	Dogleg Rate (°/100usft)	Build Rate (°/100usft)	Turn Rate (°/100usft)
11,700.00	0.00	0.00	11,601.02	-1,167.46	-356.42	1,220.66	0.00	0.00	0.00
<b>TD at 11715.98</b>									
11,715.98	0.00	0.00	11,617.00	-1,167.46	-356.42	1,220.66	0.00	0.00	0.00

Design Targets									
Target Name	Dip Angle (°)	Dip Dir. (°)	TVD (usft)	+N/-S (usft)	+E/-W (usft)	Northing (usft)	Easting (usft)	Latitude	Longitude
- hit/miss target									
- Shape									
RG 414-7-297 - KMV G&S	0.00	0.00	7,963.00	-1,167.46	-356.42	1,759,723.70	2,205,818.30	39.885291	-108.330358
- plan hits target center									
- Circle (radius 50.00)									
RG 414-7-297 - PBHL	0.00	0.00	11,623.00	-1,167.46	-356.42	1,759,723.70	2,205,818.30	39.885291	-108.330358
- plan misses target center by 6.00usft at 11715.98usft MD (11617.00 TVD, -1167.46 N, -356.42 E)									
- Point									

Casing Points					
Measured Depth (usft)	Vertical Depth (usft)	Name	Casing Diameter (")	Hole Diameter (")	
1,375.90	1,363.00	13 3/8" Surface Casing	13-3/8	17-1/2	
3,302.38	3,263.00	9 5/8" Intermediate Casing	9-5/8	12-1/4	

Formations						
Measured Depth (usft)	Vertical Depth (usft)	Name	Lithology	Dip (°)	Dip Direction (°)	
914.56	908.00	GRRV				
1,071.72	1,063.00	GRRV_A_GROOVE				
1,264.37	1,253.00	GRRV_B_GROOVE				
1,578.69	1,563.00	GRRV DISSOLUTION_SURF				
2,562.21	2,533.00	GRRV_ORANGE				
2,795.41	2,763.00	WSTC				
5,137.60	5,073.00	G_SAND				
5,431.64	5,363.00	FRUN				
6,790.31	6,703.00	MVRD				
8,061.98	7,963.00	KMVGAS				
10,211.98	10,113.00	CMEO*				
10,731.98	10,633.00	RLNS				
10,881.98	10,783.00	CZZT				
11,101.98	11,003.00	CRCN				
11,451.98	11,353.00	SEGO_UPPER				
11,621.98	11,523.00	SEGO_LOWER				

<b>Database:</b>	EDM 5000.1 Single User Db	<b>Local Co-ordinate Reference:</b>	Well RG 414-7-297 - Slot RG 414-7-297
<b>Company:</b>	Terra Energy Partners, LLP	<b>TVD Reference:</b>	KB=30' @ 6633.00usft (H&P #329)
<b>Project:</b>	Rio Blanco County, CO	<b>MD Reference:</b>	KB=30' @ 6633.00usft (H&P #329)
<b>Site:</b>	RGU 23-7-297 Pad	<b>North Reference:</b>	True
<b>Well:</b>	RG 414-7-297	<b>Survey Calculation Method:</b>	Minimum Curvature
<b>Wellbore:</b>	Wellbore #1		
<b>Design:</b>	Plan 3		

Plan Annotations				
Measured Depth (usft)	Vertical Depth (usft)	Local Coordinates		Comment
		+N/-S (usft)	+E/-W (usft)	
120.00	120.00	0.00	0.00	Start Build 2.00
595.47	593.29	-37.65	-11.49	Start 6832.54 hold at 595.47 MD
7,428.01	7,331.95	-1,117.26	-341.10	Start Drop -1.50
8,061.98	7,963.00	-1,167.46	-356.42	Start 3654.00 hold at 8061.98 MD
11,715.98	11,617.00	-1,167.46	-356.42	TD at 11715.98