

PROJECT DETAILS: Rio Blanco County, CO

Geodetic System: US State Plane 1983
 Datum: North American Datum 1983
 Ellipsoid: GRS 1980
 Zone: Colorado Central Zone
 System Datum: Mean Sea Level

WELLBORE TARGET DETAILS (MAP CO-ORDINATES AND LAT/LONG)

Name	TVD	+N/-S	+E/-W	Northing	Easting	Latitude	Longitude	Shape
RG 314-7-297 - KMV Gas	7983.00	-795.53	-348.40	1760096.60	2205830.50	39.886315	-108.330355	Circle (Radius: 50.00)
RG 314-7-297 - PBHL	11643.00	-795.53	-348.40	1760096.60	2205830.50	39.886315	-108.330355	Point

REFERENCE INFORMATION

Co-ordinate (N/E) Reference: Well RG 314-7-297 - Slot RG 314-7-297, True North
 Vertical (TVD) Reference: KB=30' @ 6633.00usft (H&P #329)
 Section (VS) Reference: Slot - RG 314-7-297(0.00N, 0.00E)
 Measured Depth Reference: KB=30' @ 6633.00usft (H&P #329)
 Calculation Method: Minimum Curvature

ANNOTATIONS

MD	Inc	Azi	TVD	+N/-S	+E/-W	VSec	Departure	Annotation
135.00	0.00	0.00	135.00	0.00	0.00	0.00	0.00	Start Build 2.00
467.01	6.64	203.65	466.27	-17.60	-7.71	19.22	19.22	Start 7122.83 hold at 467.01 MD
7589.84	6.64	203.65	7541.31	-772.06	-338.12	842.86	842.86	Start Drop -1.50
8032.51	0.00	0.00	7983.00	-795.53	-348.40	868.48	868.48	Start 3660.00 hold at 8032.51 MD
11692.51	0.00	0.00	11643.00	-795.53	-348.40	868.48	868.48	TD at 11692.51

WELL DETAILS: RG 314-7-297

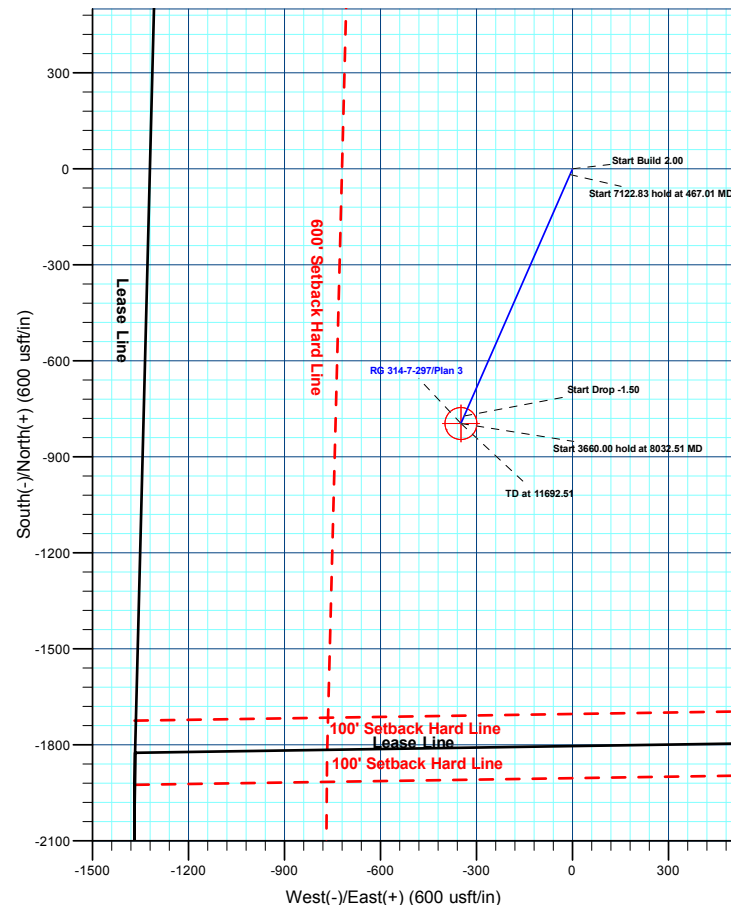
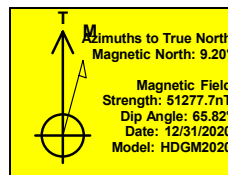
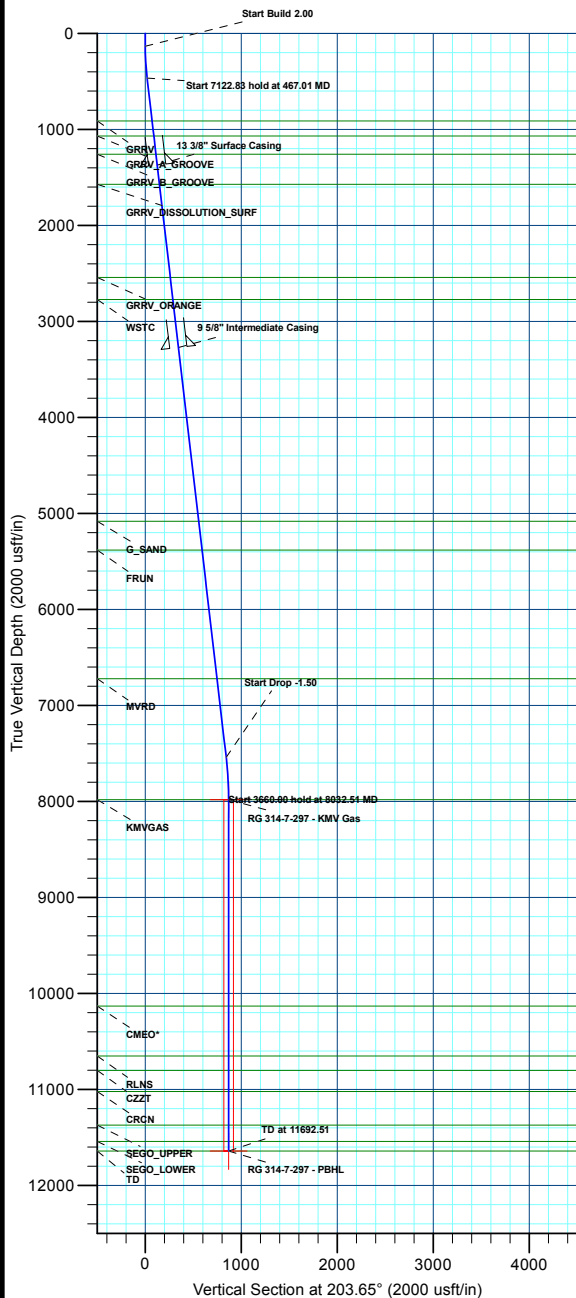
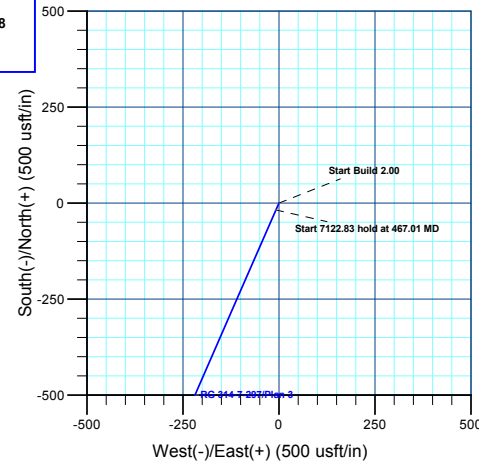
+N/-S	+E/-W	Northing	Ground Elev:	Latitude	Longitude	Slot
0.00	0.00	1760880.90	6603.00	39.888499	-108.329114	RG 314-7-297

CASING DETAILS

TVD	MD	Name	Size
1373.00	1379.87	13 3/8" Surface Casing	13-3/8
3273.00	3292.708	5/8" Intermediate Casing	9-5/8

FORMATION TOP DETAILS

TVDPath	MDPath	Formation
913.00	916.76	GRRV
1068.00	1072.81	GRRV_A_GROOVE
1258.00	1264.09	GRRV_B_GROOVE
1573.00	1581.22	GRRV DISSOLUTION_SURF
2543.00	2557.77	GRRV_ORANGE
2773.00	2789.32	WSTC
5083.00	5114.92	G_SAND
5383.00	5416.95	FRUN
6723.00	6766.00	MVRD
7983.00	8032.51	KMYGAS
10133.00	10182.51	CMEO*
10653.00	10702.51	RLNS
10803.00	10852.51	CZTZ
11023.00	11072.51	CRCN
11373.00	11422.51	SEGO_UPPER
11543.00	11592.51	SEGO_LOWER
11643.00	11692.51	TD



Plan: Plan 3 (RG 314-7-297/Wellbore #1)

Created By: Chase Chambers Date: 15:04, April 06 2022



Terra Energy Partners, LLP

Rio Blanco County, CO

RGU 23-7-297 Pad

RG 314-7-297 - Slot RG 314-7-297

Wellbore #1

Plan: Plan 3

KLX Well Planning Report

22 March, 2022



Database:	EDM 5000.1 Single User Db	Local Co-ordinate Reference:	Well RG 314-7-297 - Slot RG 314-7-297
Company:	Terra Energy Partners, LLP	TVD Reference:	KB=30' @ 6633.00usft (H&P #329)
Project:	Rio Blanco County, CO	MD Reference:	KB=30' @ 6633.00usft (H&P #329)
Site:	RGU 23-7-297 Pad	North Reference:	True
Well:	RG 314-7-297	Survey Calculation Method:	Minimum Curvature
Wellbore:	Wellbore #1		
Design:	Plan 3		

Project	Rio Blanco County, CO		
Map System:	US State Plane 1983	System Datum:	Mean Sea Level
Geo Datum:	North American Datum 1983		
Map Zone:	Colorado Central Zone		

Site	RGU 23-7-297 Pad				
Site Position:	Northing:	1,760,880.90 usft	Latitude:	39.888499	
From: Map	Easting:	2,206,203.50 usft	Longitude:	-108.329114	
Position Uncertainty:	0.00 usft	Slot Radius:	13-3/16 "	Grid Convergence:	-1.78 °

Well	RG 314-7-297 - Slot RG 314-7-297					
Well Position	+N/-S	0.00 usft	Northing:	1,760,880.90 usft	Latitude:	39.888499
	+E/-W	0.00 usft	Easting:	2,206,203.50 usft	Longitude:	-108.329114
Position Uncertainty	0.00 usft		Wellhead Elevation:		Ground Level:	6,603.00 usft

Wellbore	Wellbore #1				
Magnetics	Model Name	Sample Date	Declination (°)	Dip Angle (°)	Field Strength (nT)
	HDGM2020	12/31/2020	9.20	65.82	51,277.70000000

Design	Plan 3			
Audit Notes:				
Version:	Phase:	PLAN	Tie On Depth:	0.00
Vertical Section:	Depth From (TVD) (usft)	+N/-S (usft)	+E/-W (usft)	Direction (°)
	0.00	0.00	0.00	203.65

Plan Sections										
Measured Depth (usft)	Inclination (°)	Azimuth (°)	Vertical Depth (usft)	+N/-S (usft)	+E/-W (usft)	Dogleg Rate (°/100usft)	Build Rate (°/100usft)	Turn Rate (°/100usft)	TFO (°)	Target
0.00	0.00	0.00	0.00	0.00	0.00	0.00	0.00	0.00	0.00	
135.00	0.00	0.00	135.00	0.00	0.00	0.00	0.00	0.00	0.00	
467.01	6.64	203.65	466.27	-17.60	-7.71	2.00	2.00	0.00	203.65	
7,589.84	6.64	203.65	7,541.31	-772.06	-338.12	0.00	0.00	0.00	0.00	
8,032.51	0.00	0.00	7,983.00	-795.53	-348.40	1.50	-1.50	0.00	180.00	RG 314-7-297 - KMV
11,692.51	0.00	0.00	11,643.00	-795.53	-348.40	0.00	0.00	0.00	0.00	RG 314-7-297 - PBHL

Database:	EDM 5000.1 Single User Db	Local Co-ordinate Reference:	Well RG 314-7-297 - Slot RG 314-7-297
Company:	Terra Energy Partners, LLP	TVD Reference:	KB=30' @ 6633.00usft (H&P #329)
Project:	Rio Blanco County, CO	MD Reference:	KB=30' @ 6633.00usft (H&P #329)
Site:	RGU 23-7-297 Pad	North Reference:	True
Well:	RG 314-7-297	Survey Calculation Method:	Minimum Curvature
Wellbore:	Wellbore #1		
Design:	Plan 3		

Planned Survey										
Measured Depth (usft)	Inclination (°)	Azimuth (°)	Vertical Depth (usft)	+N/-S (usft)	+E/-W (usft)	Vertical Section (usft)	Dogleg Rate (°/100usft)	Build Rate (°/100usft)	Turn Rate (°/100usft)	
0.00	0.00	0.00	0.00	0.00	0.00	0.00	0.00	0.00	0.00	0.00
100.00	0.00	0.00	100.00	0.00	0.00	0.00	0.00	0.00	0.00	0.00
Start Build 2.00										
135.00	0.00	0.00	135.00	0.00	0.00	0.00	0.00	0.00	0.00	0.00
200.00	1.30	203.65	199.99	-0.68	-0.30	0.74	2.00	2.00	2.00	0.00
300.00	3.30	203.65	299.91	-4.35	-1.91	4.75	2.00	2.00	2.00	0.00
400.00	5.30	203.65	399.62	-11.22	-4.91	12.25	2.00	2.00	2.00	0.00
Start 7122.83 hold at 467.01 MD										
467.01	6.64	203.65	466.27	-17.60	-7.71	19.22	2.00	2.00	2.00	0.00
500.00	6.64	203.65	499.04	-21.10	-9.24	23.03	0.00	0.00	0.00	0.00
600.00	6.64	203.65	598.37	-31.69	-13.88	34.60	0.00	0.00	0.00	0.00
700.00	6.64	203.65	697.69	-42.28	-18.52	46.16	0.00	0.00	0.00	0.00
800.00	6.64	203.65	797.02	-52.87	-23.16	57.72	0.00	0.00	0.00	0.00
900.00	6.64	203.65	896.35	-63.47	-27.79	69.29	0.00	0.00	0.00	0.00
GRRV										
916.76	6.64	203.65	913.00	-65.24	-28.57	71.22	0.00	0.00	0.00	0.00
1,000.00	6.64	203.65	995.68	-74.06	-32.43	80.85	0.00	0.00	0.00	0.00
GRRV_A_GROOVE										
1,072.81	6.64	203.65	1,068.00	-81.77	-35.81	89.27	0.00	0.00	0.00	0.00
1,100.00	6.64	203.65	1,095.01	-84.65	-37.07	92.41	0.00	0.00	0.00	0.00
1,200.00	6.64	203.65	1,194.34	-95.24	-41.71	103.98	0.00	0.00	0.00	0.00
GRRV_B_GROOVE										
1,264.09	6.64	203.65	1,258.00	-102.03	-44.68	111.39	0.00	0.00	0.00	0.00
1,300.00	6.64	203.65	1,293.67	-105.83	-46.35	115.54	0.00	0.00	0.00	0.00
13 3/8" Surface Casing										
1,379.87	6.64	203.65	1,373.00	-114.29	-50.05	124.77	0.00	0.00	0.00	0.00
1,400.00	6.64	203.65	1,393.00	-116.43	-50.99	127.10	0.00	0.00	0.00	0.00
1,500.00	6.64	203.65	1,492.33	-127.02	-55.63	138.67	0.00	0.00	0.00	0.00
GRRV DISSOLUTION_SURF										
1,581.22	6.64	203.65	1,573.00	-135.62	-59.39	148.06	0.00	0.00	0.00	0.00
1,600.00	6.64	203.65	1,591.66	-137.61	-60.27	150.23	0.00	0.00	0.00	0.00
1,700.00	6.64	203.65	1,690.99	-148.20	-64.90	161.79	0.00	0.00	0.00	0.00
1,800.00	6.64	203.65	1,790.32	-158.80	-69.54	173.36	0.00	0.00	0.00	0.00
1,900.00	6.64	203.65	1,889.64	-169.39	-74.18	184.92	0.00	0.00	0.00	0.00
2,000.00	6.64	203.65	1,988.97	-179.98	-78.82	196.48	0.00	0.00	0.00	0.00
2,100.00	6.64	203.65	2,088.30	-190.57	-83.46	208.05	0.00	0.00	0.00	0.00
2,200.00	6.64	203.65	2,187.63	-201.16	-88.10	219.61	0.00	0.00	0.00	0.00
2,300.00	6.64	203.65	2,286.96	-211.76	-92.74	231.17	0.00	0.00	0.00	0.00
2,400.00	6.64	203.65	2,386.29	-222.35	-97.38	242.74	0.00	0.00	0.00	0.00
2,500.00	6.64	203.65	2,485.62	-232.94	-102.01	254.30	0.00	0.00	0.00	0.00
GRRV_ORANGE										
2,557.77	6.64	203.65	2,543.00	-239.06	-104.69	260.98	0.00	0.00	0.00	0.00
2,600.00	6.64	203.65	2,584.95	-243.53	-106.65	265.86	0.00	0.00	0.00	0.00
2,700.00	6.64	203.65	2,684.28	-254.12	-111.29	277.43	0.00	0.00	0.00	0.00
WSTC										
2,789.32	6.64	203.65	2,773.00	-263.59	-115.44	287.75	0.00	0.00	0.00	0.00
2,800.00	6.64	203.65	2,783.61	-264.72	-115.93	288.99	0.00	0.00	0.00	0.00
2,900.00	6.64	203.65	2,882.94	-275.31	-120.57	300.55	0.00	0.00	0.00	0.00
3,000.00	6.64	203.65	2,982.27	-285.90	-125.21	312.12	0.00	0.00	0.00	0.00
3,100.00	6.64	203.65	3,081.60	-296.49	-129.85	323.68	0.00	0.00	0.00	0.00
3,200.00	6.64	203.65	3,180.92	-307.09	-134.49	335.24	0.00	0.00	0.00	0.00
9 5/8" Intermediate Casing										
3,292.70	6.64	203.65	3,273.00	-316.90	-138.79	345.96	0.00	0.00	0.00	0.00

Database:	EDM 5000.1 Single User Db	Local Co-ordinate Reference:	Well RG 314-7-297 - Slot RG 314-7-297
Company:	Terra Energy Partners, LLP	TVD Reference:	KB=30' @ 6633.00usft (H&P #329)
Project:	Rio Blanco County, CO	MD Reference:	KB=30' @ 6633.00usft (H&P #329)
Site:	RGU 23-7-297 Pad	North Reference:	True
Well:	RG 314-7-297	Survey Calculation Method:	Minimum Curvature
Wellbore:	Wellbore #1		
Design:	Plan 3		

Planned Survey									
Measured Depth (usft)	Inclination (°)	Azimuth (°)	Vertical Depth (usft)	+N/-S (usft)	+E/-W (usft)	Vertical Section (usft)	Dogleg Rate (°/100usft)	Build Rate (°/100usft)	Turn Rate (°/100usft)
3,300.00	6.64	203.65	3,280.25	-317.68	-139.12	346.81	0.00	0.00	0.00
3,400.00	6.64	203.65	3,379.58	-328.27	-143.76	358.37	0.00	0.00	0.00
3,500.00	6.64	203.65	3,478.91	-338.86	-148.40	369.93	0.00	0.00	0.00
3,600.00	6.64	203.65	3,578.24	-349.45	-153.04	381.50	0.00	0.00	0.00
3,700.00	6.64	203.65	3,677.57	-360.05	-157.68	393.06	0.00	0.00	0.00
3,800.00	6.64	203.65	3,776.90	-370.64	-162.32	404.62	0.00	0.00	0.00
3,900.00	6.64	203.65	3,876.23	-381.23	-166.96	416.19	0.00	0.00	0.00
4,000.00	6.64	203.65	3,975.56	-391.82	-171.60	427.75	0.00	0.00	0.00
4,100.00	6.64	203.65	4,074.89	-402.41	-176.23	439.31	0.00	0.00	0.00
4,200.00	6.64	203.65	4,174.22	-413.01	-180.87	450.88	0.00	0.00	0.00
4,300.00	6.64	203.65	4,273.55	-423.60	-185.51	462.44	0.00	0.00	0.00
4,400.00	6.64	203.65	4,372.87	-434.19	-190.15	474.00	0.00	0.00	0.00
4,500.00	6.64	203.65	4,472.20	-444.78	-194.79	485.57	0.00	0.00	0.00
4,600.00	6.64	203.65	4,571.53	-455.38	-199.43	497.13	0.00	0.00	0.00
4,700.00	6.64	203.65	4,670.86	-465.97	-204.07	508.69	0.00	0.00	0.00
4,800.00	6.64	203.65	4,770.19	-476.56	-208.71	520.26	0.00	0.00	0.00
4,900.00	6.64	203.65	4,869.52	-487.15	-213.34	531.82	0.00	0.00	0.00
5,000.00	6.64	203.65	4,968.85	-497.74	-217.98	543.38	0.00	0.00	0.00
5,100.00	6.64	203.65	5,068.18	-508.34	-222.62	554.95	0.00	0.00	0.00
G_SAND									
5,114.92	6.64	203.65	5,083.00	-509.92	-223.31	556.67	0.00	0.00	0.00
5,200.00	6.64	203.65	5,167.51	-518.93	-227.26	566.51	0.00	0.00	0.00
5,300.00	6.64	203.65	5,266.84	-529.52	-231.90	578.07	0.00	0.00	0.00
5,400.00	6.64	203.65	5,366.17	-540.11	-236.54	589.64	0.00	0.00	0.00
FRUN									
5,416.95	6.64	203.65	5,383.00	-541.91	-237.32	591.60	0.00	0.00	0.00
5,500.00	6.64	203.65	5,465.50	-550.70	-241.18	601.20	0.00	0.00	0.00
5,600.00	6.64	203.65	5,564.82	-561.30	-245.82	612.76	0.00	0.00	0.00
5,700.00	6.64	203.65	5,664.15	-571.89	-250.45	624.33	0.00	0.00	0.00
5,800.00	6.64	203.65	5,763.48	-582.48	-255.09	635.89	0.00	0.00	0.00
5,900.00	6.64	203.65	5,862.81	-593.07	-259.73	647.45	0.00	0.00	0.00
6,000.00	6.64	203.65	5,962.14	-603.67	-264.37	659.02	0.00	0.00	0.00
6,100.00	6.64	203.65	6,061.47	-614.26	-269.01	670.58	0.00	0.00	0.00
6,200.00	6.64	203.65	6,160.80	-624.85	-273.65	682.14	0.00	0.00	0.00
6,300.00	6.64	203.65	6,260.13	-635.44	-278.29	693.71	0.00	0.00	0.00
6,400.00	6.64	203.65	6,359.46	-646.03	-282.93	705.27	0.00	0.00	0.00
6,500.00	6.64	203.65	6,458.79	-656.63	-287.56	716.83	0.00	0.00	0.00
6,600.00	6.64	203.65	6,558.12	-667.22	-292.20	728.40	0.00	0.00	0.00
6,700.00	6.64	203.65	6,657.45	-677.81	-296.84	739.96	0.00	0.00	0.00
MVRD									
6,766.00	6.64	203.65	6,723.00	-684.80	-299.90	747.59	0.00	0.00	0.00
6,800.00	6.64	203.65	6,756.78	-688.40	-301.48	751.52	0.00	0.00	0.00
6,900.00	6.64	203.65	6,856.10	-698.99	-306.12	763.09	0.00	0.00	0.00
7,000.00	6.64	203.65	6,955.43	-709.59	-310.76	774.65	0.00	0.00	0.00
7,100.00	6.64	203.65	7,054.76	-720.18	-315.40	786.21	0.00	0.00	0.00
7,200.00	6.64	203.65	7,154.09	-730.77	-320.04	797.78	0.00	0.00	0.00
7,300.00	6.64	203.65	7,253.42	-741.36	-324.67	809.34	0.00	0.00	0.00
7,400.00	6.64	203.65	7,352.75	-751.96	-329.31	820.90	0.00	0.00	0.00
7,500.00	6.64	203.65	7,452.08	-762.55	-333.95	832.47	0.00	0.00	0.00
Start Drop -1.50									
7,589.84	6.64	203.65	7,541.31	-772.06	-338.12	842.86	0.00	0.00	0.00
7,600.00	6.49	203.65	7,551.41	-773.13	-338.59	844.02	1.50	-1.50	0.00
7,700.00	4.99	203.65	7,650.91	-782.28	-342.60	854.02	1.50	-1.50	0.00

Database:	EDM 5000.1 Single User Db	Local Co-ordinate Reference:	Well RG 314-7-297 - Slot RG 314-7-297
Company:	Terra Energy Partners, LLP	TVD Reference:	KB=30' @ 6633.00usft (H&P #329)
Project:	Rio Blanco County, CO	MD Reference:	KB=30' @ 6633.00usft (H&P #329)
Site:	RGU 23-7-297 Pad	North Reference:	True
Well:	RG 314-7-297	Survey Calculation Method:	Minimum Curvature
Wellbore:	Wellbore #1		
Design:	Plan 3		

Planned Survey										
Measured Depth (usft)	Inclination (°)	Azimuth (°)	Vertical Depth (usft)	+N/-S (usft)	+E/-W (usft)	Vertical Section (usft)	Dogleg Rate (°/100usft)	Build Rate (°/100usft)	Turn Rate (°/100usft)	
7,800.00	3.49	203.65	7,750.63	-789.05	-345.56	861.40	1.50	-1.50	0.00	
7,900.00	1.99	203.65	7,850.51	-793.43	-347.48	866.18	1.50	-1.50	0.00	
8,000.00	0.49	203.65	7,950.49	-795.41	-348.34	868.34	1.50	-1.50	0.00	
Start 3660.00 hold at 8032.51 MD - KMGAS										
8,032.51	0.00	0.00	7,983.00	-795.53	-348.40	868.48	1.50	-1.50	0.00	
8,100.00	0.00	0.00	8,050.49	-795.53	-348.40	868.48	0.00	0.00	0.00	
8,200.00	0.00	0.00	8,150.49	-795.53	-348.40	868.48	0.00	0.00	0.00	
8,300.00	0.00	0.00	8,250.49	-795.53	-348.40	868.48	0.00	0.00	0.00	
8,400.00	0.00	0.00	8,350.49	-795.53	-348.40	868.48	0.00	0.00	0.00	
8,500.00	0.00	0.00	8,450.49	-795.53	-348.40	868.48	0.00	0.00	0.00	
8,600.00	0.00	0.00	8,550.49	-795.53	-348.40	868.48	0.00	0.00	0.00	
8,700.00	0.00	0.00	8,650.49	-795.53	-348.40	868.48	0.00	0.00	0.00	
8,800.00	0.00	0.00	8,750.49	-795.53	-348.40	868.48	0.00	0.00	0.00	
8,900.00	0.00	0.00	8,850.49	-795.53	-348.40	868.48	0.00	0.00	0.00	
9,000.00	0.00	0.00	8,950.49	-795.53	-348.40	868.48	0.00	0.00	0.00	
9,100.00	0.00	0.00	9,050.49	-795.53	-348.40	868.48	0.00	0.00	0.00	
9,200.00	0.00	0.00	9,150.49	-795.53	-348.40	868.48	0.00	0.00	0.00	
9,300.00	0.00	0.00	9,250.49	-795.53	-348.40	868.48	0.00	0.00	0.00	
9,400.00	0.00	0.00	9,350.49	-795.53	-348.40	868.48	0.00	0.00	0.00	
9,500.00	0.00	0.00	9,450.49	-795.53	-348.40	868.48	0.00	0.00	0.00	
9,600.00	0.00	0.00	9,550.49	-795.53	-348.40	868.48	0.00	0.00	0.00	
9,700.00	0.00	0.00	9,650.49	-795.53	-348.40	868.48	0.00	0.00	0.00	
9,800.00	0.00	0.00	9,750.49	-795.53	-348.40	868.48	0.00	0.00	0.00	
9,900.00	0.00	0.00	9,850.49	-795.53	-348.40	868.48	0.00	0.00	0.00	
10,000.00	0.00	0.00	9,950.49	-795.53	-348.40	868.48	0.00	0.00	0.00	
10,100.00	0.00	0.00	10,050.49	-795.53	-348.40	868.48	0.00	0.00	0.00	
CMEO*										
10,182.51	0.00	0.00	10,133.00	-795.53	-348.40	868.48	0.00	0.00	0.00	
10,200.00	0.00	0.00	10,150.49	-795.53	-348.40	868.48	0.00	0.00	0.00	
10,300.00	0.00	0.00	10,250.49	-795.53	-348.40	868.48	0.00	0.00	0.00	
10,400.00	0.00	0.00	10,350.49	-795.53	-348.40	868.48	0.00	0.00	0.00	
10,500.00	0.00	0.00	10,450.49	-795.53	-348.40	868.48	0.00	0.00	0.00	
10,600.00	0.00	0.00	10,550.49	-795.53	-348.40	868.48	0.00	0.00	0.00	
10,700.00	0.00	0.00	10,650.49	-795.53	-348.40	868.48	0.00	0.00	0.00	
RLNS										
10,702.51	0.00	0.00	10,653.00	-795.53	-348.40	868.48	0.00	0.00	0.00	
10,800.00	0.00	0.00	10,750.49	-795.53	-348.40	868.48	0.00	0.00	0.00	
CZZT										
10,852.51	0.00	0.00	10,803.00	-795.53	-348.40	868.48	0.00	0.00	0.00	
10,900.00	0.00	0.00	10,850.49	-795.53	-348.40	868.48	0.00	0.00	0.00	
11,000.00	0.00	0.00	10,950.49	-795.53	-348.40	868.48	0.00	0.00	0.00	
CRCN										
11,072.51	0.00	0.00	11,023.00	-795.53	-348.40	868.48	0.00	0.00	0.00	
11,100.00	0.00	0.00	11,050.49	-795.53	-348.40	868.48	0.00	0.00	0.00	
11,200.00	0.00	0.00	11,150.49	-795.53	-348.40	868.48	0.00	0.00	0.00	
11,300.00	0.00	0.00	11,250.49	-795.53	-348.40	868.48	0.00	0.00	0.00	
11,400.00	0.00	0.00	11,350.49	-795.53	-348.40	868.48	0.00	0.00	0.00	
SEGO_UPPER										
11,422.51	0.00	0.00	11,373.00	-795.53	-348.40	868.48	0.00	0.00	0.00	
11,500.00	0.00	0.00	11,450.49	-795.53	-348.40	868.48	0.00	0.00	0.00	
SEGO_LOWER										
11,592.51	0.00	0.00	11,543.00	-795.53	-348.40	868.48	0.00	0.00	0.00	
11,600.00	0.00	0.00	11,550.49	-795.53	-348.40	868.48	0.00	0.00	0.00	

Database:	EDM 5000.1 Single User Db	Local Co-ordinate Reference:	Well RG 314-7-297 - Slot RG 314-7-297
Company:	Terra Energy Partners, LLP	TVD Reference:	KB=30' @ 6633.00usft (H&P #329)
Project:	Rio Blanco County, CO	MD Reference:	KB=30' @ 6633.00usft (H&P #329)
Site:	RGU 23-7-297 Pad	North Reference:	True
Well:	RG 314-7-297	Survey Calculation Method:	Minimum Curvature
Wellbore:	Wellbore #1		
Design:	Plan 3		

Planned Survey									
Measured Depth (usft)	Inclination (°)	Azimuth (°)	Vertical Depth (usft)	+N/-S (usft)	+E/-W (usft)	Vertical Section (usft)	Dogleg Rate (°/100usft)	Build Rate (°/100usft)	Turn Rate (°/100usft)
TD at 11692.51 - TD									
11,692.51	0.00	0.00	11,643.00	-795.53	-348.40	868.48	0.00	0.00	0.00

Design Targets									
Target Name	Dip Angle (°)	Dip Dir. (°)	TVD (usft)	+N/-S (usft)	+E/-W (usft)	Northing (usft)	Easting (usft)	Latitude	Longitude
RG 314-7-297 - KMV Gc - hit/miss target - Shape - plan hits target center - Circle (radius 50.00)	0.00	0.00	7,983.00	-795.53	-348.40	1,760,096.60	2,205,830.50	39.886315	-108.330356
RG 314-7-297 - PBHL - plan hits target center - Point	0.00	0.00	11,643.00	-795.53	-348.40	1,760,096.60	2,205,830.50	39.886315	-108.330356

Casing Points					
Measured Depth (usft)	Vertical Depth (usft)	Name	Casing Diameter (")	Hole Diameter (")	
1,379.87	1,373.00	13 3/8" Surface Casing	13-3/8	17-1/2	
3,292.70	3,273.00	9 5/8" Intermediate Casing	9-5/8	12-1/4	

Formations						
Measured Depth (usft)	Vertical Depth (usft)	Name	Lithology	Dip (°)	Dip Direction (°)	
916.76	913.00	GRRV				
1,072.81	1,068.00	GRRV_A_GROOVE				
1,264.09	1,258.00	GRRV_B_GROOVE				
1,581.22	1,573.00	GRRV DISSOLUTION_SURF				
2,557.77	2,543.00	GRRV_ORANGE				
2,789.32	2,773.00	WSTC				
5,114.92	5,083.00	G_SAND				
5,416.95	5,383.00	FRUN				
6,766.00	6,723.00	MVRD				
8,032.51	7,983.00	KMVGAS				
10,182.51	10,133.00	CMEO*				
10,702.51	10,653.00	RLNS				
10,852.51	10,803.00	CZZT				
11,072.51	11,023.00	CRCN				
11,422.51	11,373.00	SEGO_UPPER				
11,592.51	11,543.00	SEGO_LOWER				
11,692.51	11,643.00	TD				

Database:	EDM 5000.1 Single User Db	Local Co-ordinate Reference:	Well RG 314-7-297 - Slot RG 314-7-297
Company:	Terra Energy Partners, LLP	TVD Reference:	KB=30' @ 6633.00usft (H&P #329)
Project:	Rio Blanco County, CO	MD Reference:	KB=30' @ 6633.00usft (H&P #329)
Site:	RGU 23-7-297 Pad	North Reference:	True
Well:	RG 314-7-297	Survey Calculation Method:	Minimum Curvature
Wellbore:	Wellbore #1		
Design:	Plan 3		

Plan Annotations				
Measured Depth (usft)	Vertical Depth (usft)	Local Coordinates		Comment
		+N/-S (usft)	+E/-W (usft)	
135.00	135.00	0.00	0.00	Start Build 2.00
467.01	466.27	-17.60	-7.71	Start 7122.83 hold at 467.01 MD
7,589.84	7,541.31	-772.06	-338.12	Start Drop -1.50
8,032.51	7,983.00	-795.53	-348.40	Start 3660.00 hold at 8032.51 MD
11,692.51	11,643.00	-795.53	-348.40	TD at 11692.51