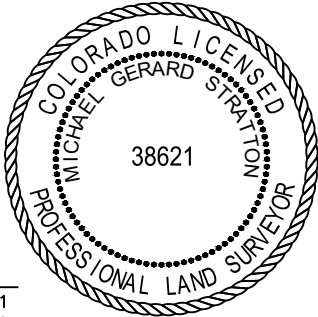


L:\Engineering\0221043_Civitas_Alma West\SURVEY\DRAWINGS\EXHIBITS\WELL_PLOTS\ALMA WEST 35W-20-09.dwg, 3/30/2022 8:09:31 AM, MICHAEL STRATTON, LAMP RYNEARSON

LAND SURVEYOR'S CERTIFICATION

LAMP RYNEARSON, INC. OF FT. COLLINS, COLORADO HAS, IN ACCORDANCE WITH A REQUEST FROM NATHAN BENNETT OF EXTRACTION OIL & GAS, DETERMINED THE SURFACE LOCATION OF THE WELL DESIGNATED AS ALMA WEST 35W-20-09 TO BE 237' FROM THE SOUTH LINE AND 1897' FROM THE EAST LINE OF SECTION 25, TOWNSHIP 1 SOUTH, RANGE 66 WEST OF THE 6TH P.M., ADAMS COUNTY, COLORADO.



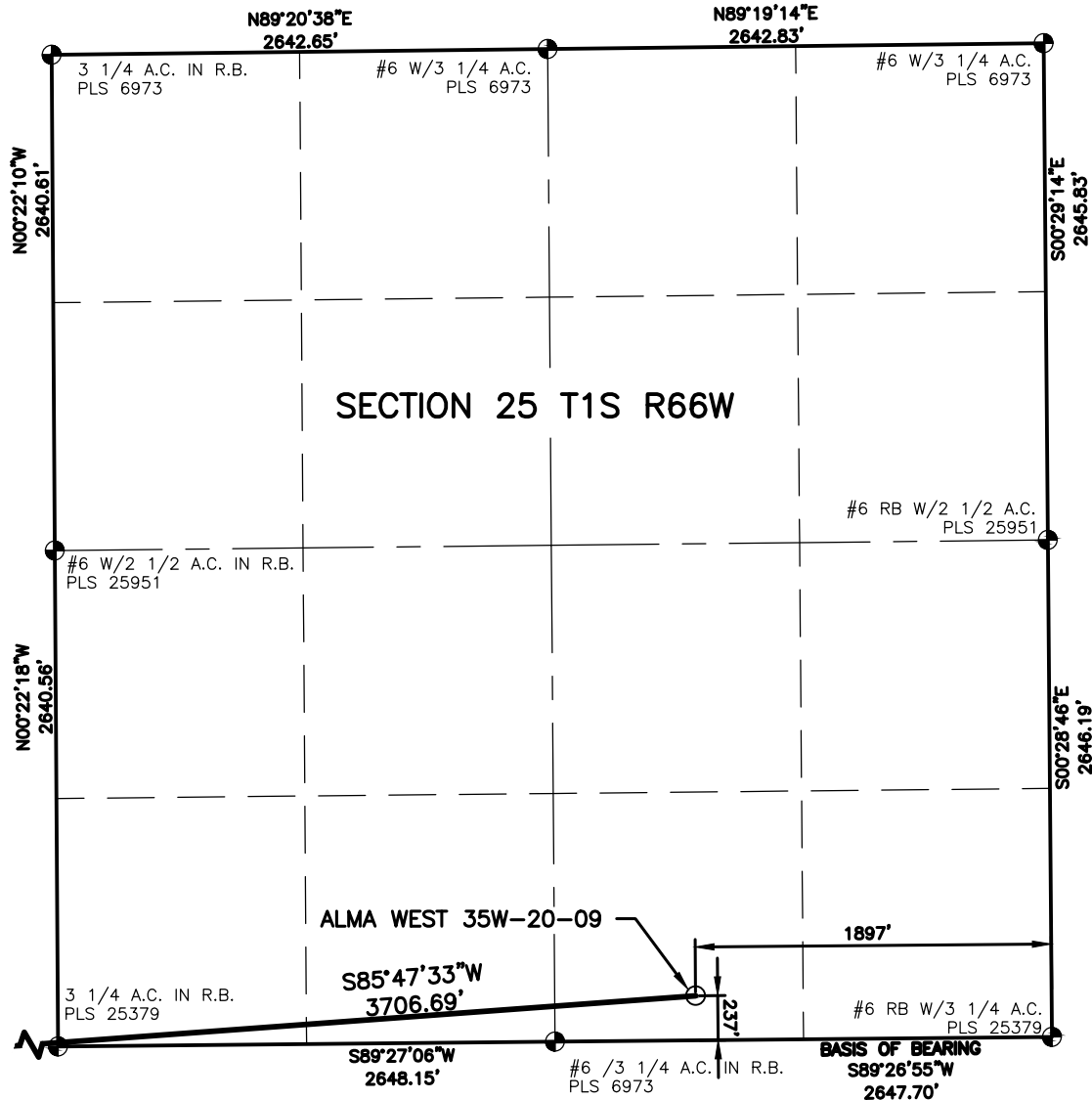
MICHAEL GERARD STRATTON COLORADO PLS 38621
DATE OF SURVEY: 1/11/2022 (SECTION CONTROL)
DATE OF SURVEY: 3/22/2022 (WELL LOCATION)

LAMP
RYNEARSON

4715 INNOVATION DR., STE. 100
FORT COLLINS, CO 80525
970.226.0342
LampRynearson.com

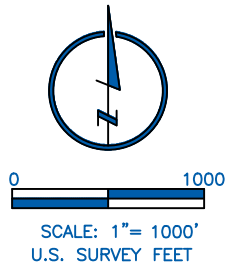


DESIGNER / DRAFTER
J.CROAK/J.POMPA
REVIEWER
M.STRATTON
PROJECT NUMBER
0221043.01
DATE
3/30/2022
SURFACE LOCATION
SW/4, SE/4 SEC 25, T1S R66W
BOOK AND PAGE



SURFACE POINT				LANDING POINT/BEGIN HORIZONTAL COMPLETION ZONE				BOTTOM HOLE/END HORIZONTAL COMPLETION ZONE			
237'	FSL	1897'	FEL	0'	FNL	300'	FEL	0'	FNL	300'	FWL

SURFACE POINT					LANDING POINT		BOTTOM HOLE	
LATTITUDE	LONGITUDE	ELEVATION	PDOP	OPERATOR	LATTITUDE	LONGITUDE	LATTITUDE	LONGITUDE
39.929500	-104.721350	5176	1.326	A.CAUWELS	39.928840	-104.734534	39.928837	-104.770090



LEGEND	
	COMPUTED ALIQUOT CORNER
	PROPOSED WELL
	ALIQUOT CORNER
	A.C. ALUMINUM CAP
	R.B. RANGE BOX
	CONC. CONCRETE
	I.C.V.B. IRRIGATION CONTROL VALVE BOX
	ALIQUOT WITNESS CORNER
	LANDING POINT

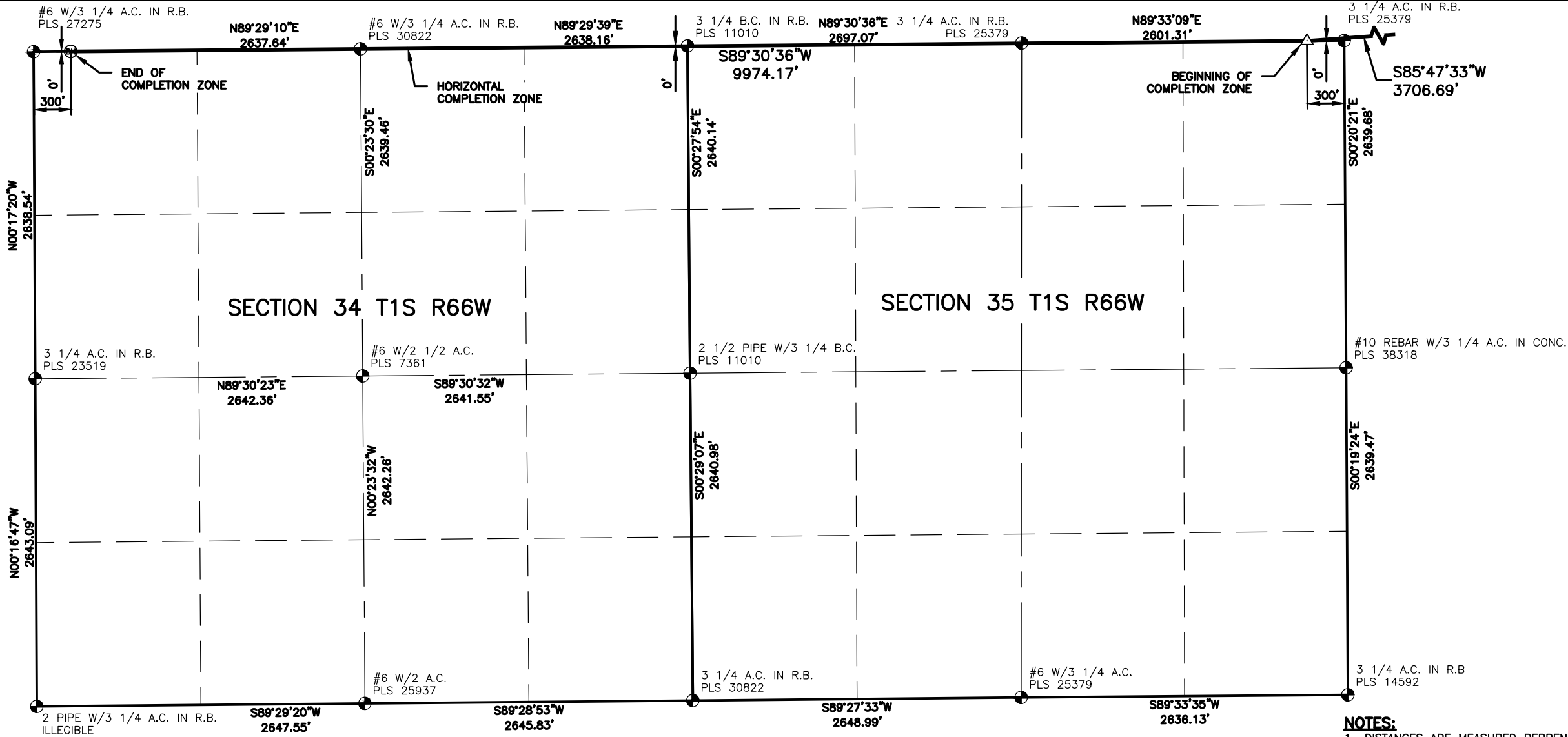
NOTES:

- DISTANCES ARE MEASURED PERPENDICULAR TO NEAREST SECTION LINE AND ARE SHOWN ON THE SAME SIDE OF THE SECTION LINE WHERE THE WELL IS LOCATED.
- THIS MAP DOES NOT REPRESENT A MONUMENTED BOUNDARY SURVEY. SIXTEENTH CORNER LOCATIONS ARE COMPUTED, UNLESS OTHERWISE NOTED.
- BOTTOM HOLE LOCATIONS AND HORIZONTAL COMPLETION ZONE PROVIDED BY OTHERS.
- ALL REBAR AND CAPS ARE MEASURED IN INCHES.
- ELEVATIONS ARE BASED ON THE NORTH AMERICAN VERTICAL DATUM OF 1988 AS MEASURED BY GNSS OBSERVATIONS USING GEOID 18.

BASIS OF BEARING:

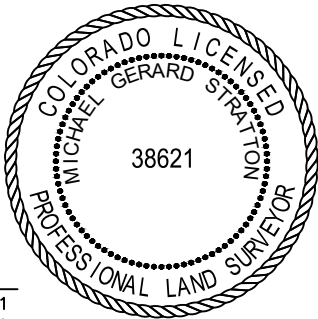
THE SOUTH LINE OF THE SOUTHEAST QUARTER OF SECTION 25-T1S-R66W BEARS S89°26'55\"W FOR A DISTANCE OF 2647.70 FEET BETWEEN THE SOUTHEAST CORNER OF SECTION 25, MONUMENTED WITH A #6 REBAR WITH 3-1/4\" ALUMINUM CAP STAMPED \"PLS 25379\" AND THE SOUTH QUARTER CORNER OF SECTION 25, MONUMENTED WITH A #6 REBAR WITH A 3-1/4\" ALUMINUM CAP STAMPED \"PLS 6973\", BASED ON THE COLORADO STATE PLANE COORDINATE SYSTEM, NORTH ZONE, NORTH AMERICAN DATUM OF 1983(2011).

PROPOSED WELL LOCATION EXHIBIT
ALMA WEST 35W-20-09



LAND SURVEYOR'S CERTIFICATION

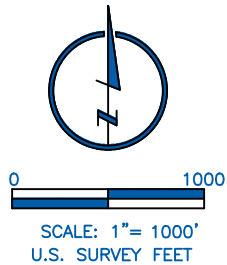
LAMP RYNEARSON, INC. OF FT. COLLINS, COLORADO HAS, IN ACCORDANCE WITH A REQUEST FROM NATHAN BENNETT OF EXTRACTION OIL & GAS, DETERMINED THE SURFACE LOCATION OF THE WELL DESIGNATED AS ALMA WEST 35W-20-09 TO BE 237' FROM THE SOUTH LINE AND 1897' FROM THE EAST LINE OF SECTION 25, TOWNSHIP 1 SOUTH, RANGE 66 WEST OF THE 6TH P.M., ADAMS COUNTY, COLORADO.



MICHAEL GERARD STRATTON COLORADO PLS 38621
DATE OF SURVEY: 1/11/2022 (SECTION CONTROL)
DATE OF SURVEY: 3/22/2022 (WELL LOCATION)

SURFACE POINT				LANDING POINT/BEGIN HORIZONTAL COMPLETION ZONE				BOTTOM HOLE/END HORIZONTAL COMPLETION ZONE			
237'	FSL	1897'	FEL	0'	FNL	300'	FEL	0'	FNL	300'	FWL

SURFACE POINT					LANDING POINT		BOTTOM HOLE		
LATITUDE	LONGITUDE	ELEVATION	PDOP	OPERATOR	LATITUDE	LONGITUDE	LATITUDE	LONGITUDE	
39.929500	-104.721350	5176	1.326	A.CAUWELS	39.928840	-104.734534	39.928837	-104.770090	



- LEGEND**
- | | | | |
|-----------------|-------------------------|----------|------------------------------|
| ◆ | COMPUTED ALIQUOT CORNER | ⊙ | PROPOSED WELL |
| ⊕ | ALIQUOT CORNER | A.C. | ALUMINUM CAP |
| ⊗ | BOTTOM HOLE | R.B. | RANGE BOX |
| ⊕ ^{WC} | ALIQUOT WITNESS CORNER | CONC. | CONCRETE |
| △ | LANDING POINT | I.C.V.B. | IRRIGATION CONTROL VALVE BOX |

- NOTES:**
- DISTANCES ARE MEASURED PERPENDICULAR TO NEAREST SECTION LINE AND ARE SHOWN ON THE SAME SIDE OF THE SECTION LINE WHERE THE WELL IS LOCATED.
 - THIS MAP DOES NOT REPRESENT A MONUMENTED BOUNDARY SURVEY. SIXTEENTH CORNER LOCATIONS ARE COMPUTED, UNLESS OTHERWISE NOTED.
 - BOTTOM HOLE LOCATIONS AND HORIZONTAL COMPLETION ZONE PROVIDED BY OTHERS.
 - ALL REBAR AND CAPS ARE MEASURED IN INCHES.
 - ELEVATIONS ARE BASED ON THE NORTH AMERICAN VERTICAL DATUM OF 1988 AS MEASURED BY GNSS OBSERVATIONS USING GEOID 18.

BASIS OF BEARING:
THE SOUTH LINE OF THE SOUTHEAST QUARTER OF SECTION 25-T1S-R66W BEARS S89°26'55\"/>

**LAMP
RYNEARSON**

4715 INNOVATION DR., STE. 100
FORT COLLINS, CO 80525
970.226.0342
LampRynearson.com



DESIGNER / DRAFTER
J.CROAK/J.POMPA
REVIEWER
M.STRATTON
PROJECT NUMBER
0221043.01
DATE
3/30/2022
SURFACE LOCATION
SW/4, SE/4 SEC 25, T1S R66W
BOOK AND PAGE

PROPOSED WELL LOCATION EXHIBIT

ALMA WEST 35W-20-09