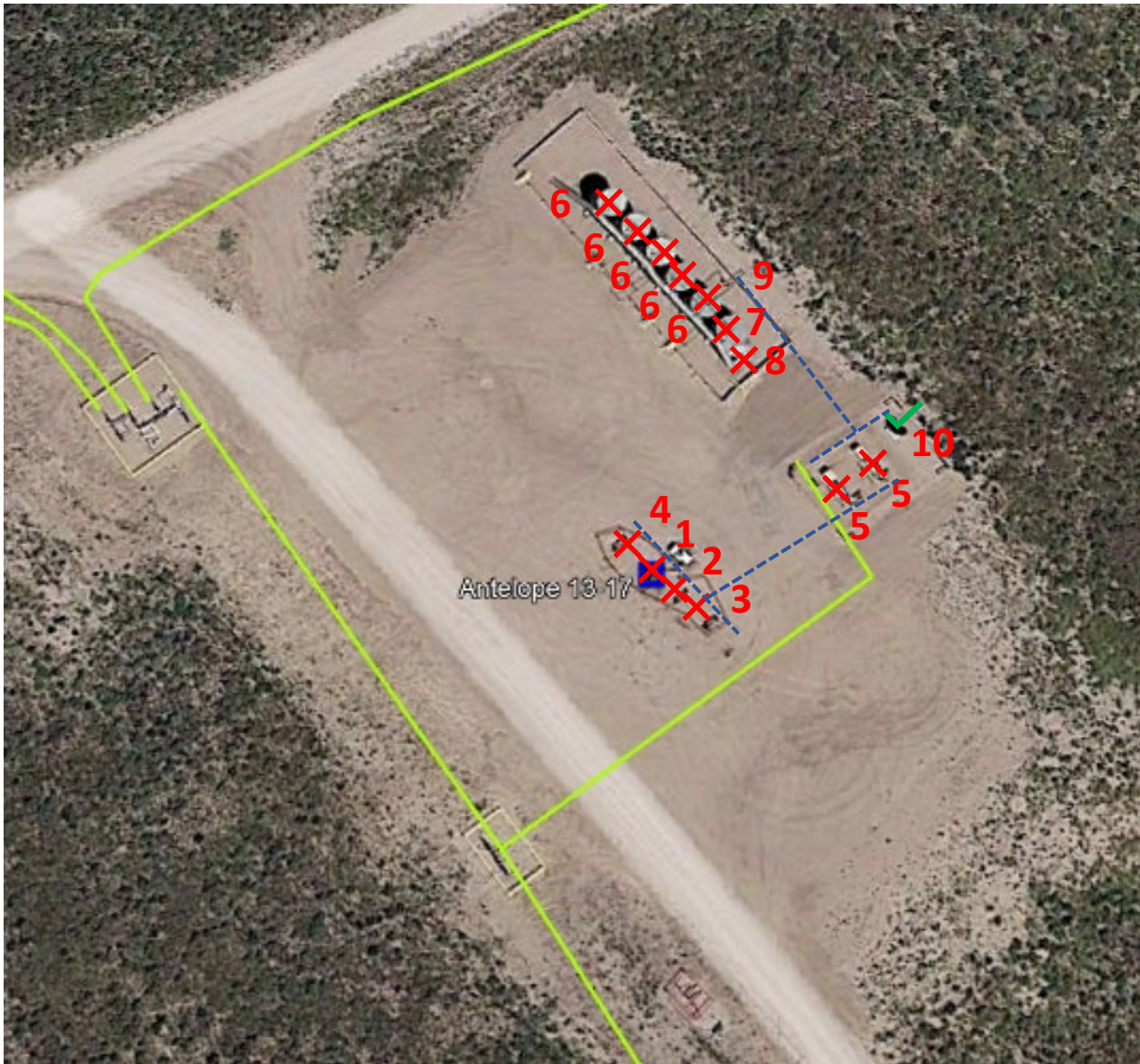


Antelope 13-17 (420920): Wellhead Cut/Cap and Equipment Removal

40.397860, -104.353800
NWSW Sec. 17 T5N, R62W, 6th PM
Weld County, Colorado



Equipment to be Removed		
Legend	Equipment	# Pieces of Equipment
1	Antelope 13-17 Wellhead (05-123-32748)	Cut/Cap Well
2	Antelope H-17 Wellhead (05-123-34907)	Cut/Cap Well
3	Antelope D-17 Wellhead (05-123-34906)	Cut/Cap Well
4	Antelope 12-17 Wellhead (05-123-33020)	Cut/Cap Well
5	Separator	2
6	Oil Tank	5
7	Water Tank	
8	Water Vault	
9	ECD KO Tank	
10	ECD	

Legend

Site Investigation Points

✓

Visual Inspection Point

✗

Visual Inspection and Soil Sample

On-Location Flowline Corridor

ANT 13-17/3/GP Line: Off-Location Flowline Removal

40.397860, -104.353800
NWSW Sec. 17 T5N, R62W, 6th PM
Weld County, Colorado

Flowline Unique OperFeatID	Line Type	Start Location	Start Location Latitude	Start Location Longitude	End Location	End Location Latitude (Cut Point)	End Location Longitude (Cut Point)	Approx. Length to Abandon (ft)
ANT 13-17/3/GP Line	Natural Gas	Separator	40.398007	-104.353587	Tie-In	40.397579	-104.354012	250



Legend
Site Investigation Points

✓

 Visual Inspection Point

✗

 Visual Inspection and Soil Sample

Antelope 13-17 (420920): ¼ Mile Buffer - Wildlife and Hydrology Map

40.397860, -104.353800
NWSW Sec. 17 T5N, R62W, 6th PM
Weld County, Colorado

Legend

Well (API Spot)

Water Well

Pronghorn Winter Concentration

Receptor	DWR Receipt (Permit)	Distance (ft)	Direction	Well Depth(ft)	Static Water Level (ft)
Irrigation Well	3663275D	640	E	1340	Not Recorded

