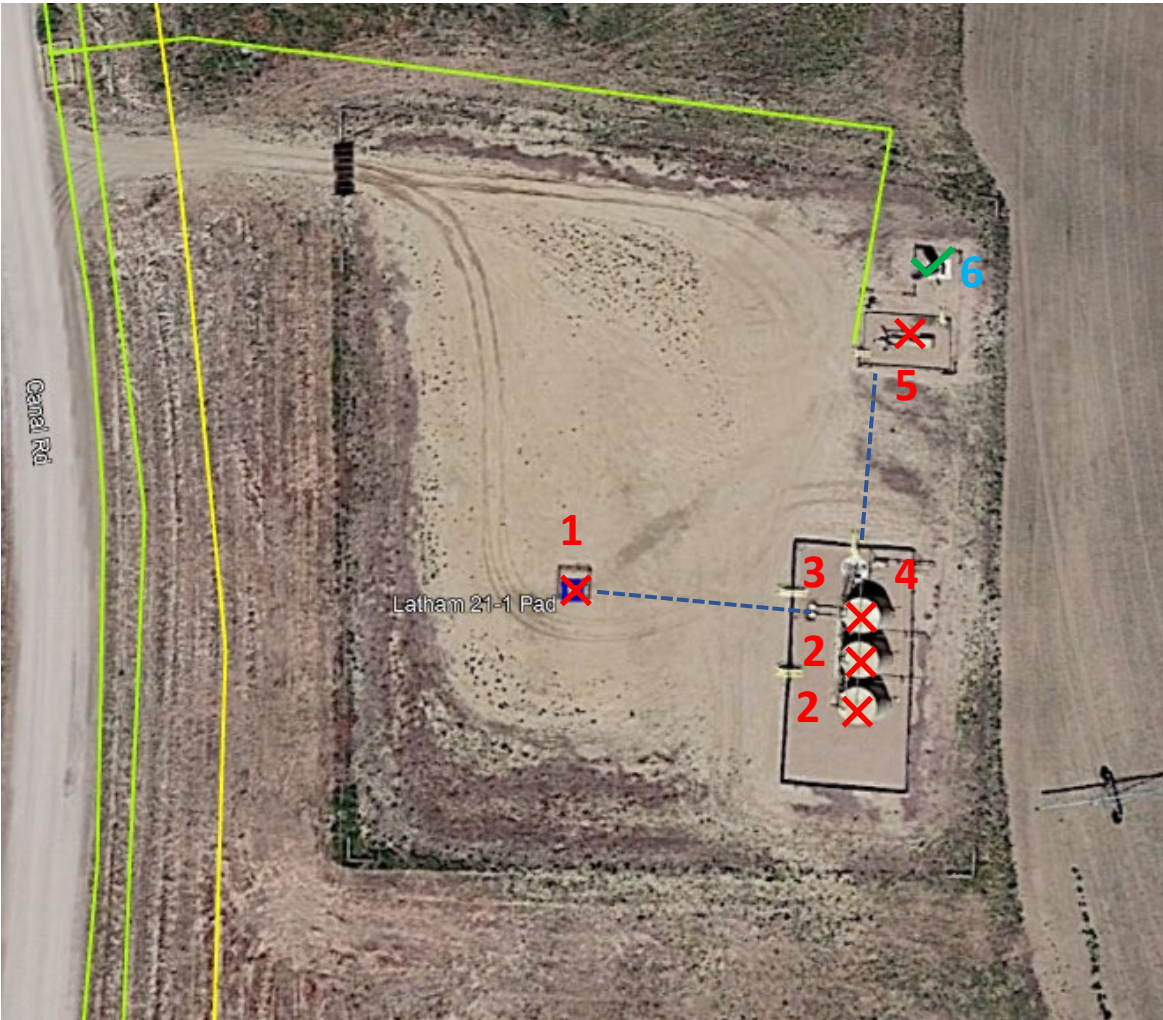


Latham 21-1 (429652): Facility Decommission and Wellhead Cut/Cap

40.346020, -104.387320
NENW Sec. 1 T4N, R63W, 6th PM
Weld County, Colorado



Equipment to be Removed		
Legend	Equipment	Plan
1	Latham 21-1 Wellhead (05-123-35857) 40.346030, -104.387310	Cut/Cap Well
2	Oil Tank	2
3	Water Tank	1
4	ECD KO Tank	1
5	Separator	1

Equipment to Remain Active		
Legend	Equipment On-Site	# Pieces of Equipment
6	Meter Buildings	1

Legend

Site Investigation Points

✓

Visual Inspection Point

✗

Visual Inspection and Soil Sample

On-Location Flowline Corridor

Latham 21-1/4/GP Line: Off-Location Flowline Removal

40.346020, -104.387320
NENW Sec. 1 T4N, R63W, 6th PM
Weld County, Colorado

Flowline Unique OperFeatID	Line Type	Start Location	Start Location Latitude	Start Location Longitude	End Location	End Location Latitude (Cut Point)	End Location Longitude (Cut Point)	Approx. Length to Abandon (ft)
Latham 21-1/4/GP	Natural Gas	Separator	40.346274	-104.38698	Tie-In	40.346618	-104.388006	400



Legend

Site Investigation Points

✓ Visual Inspection Point

✗ Visual Inspection and Soil Sample

Latham 21-1 (429652): ¼ Mile Buffer - Wildlife and Hydrology Map

40.346020, -104.387320
NENW Sec. 1 T4N, R63W, 6th PM
Weld County, Colorado

LEGEND

WELL (API SPOT)

WATER WELL

BALD EAGLE ROOST SITE

RIVERS/STREAMS

Receptor	DWR Receipt (Permit)	Distance (ft)	Direction	Well Depth(ft)	Static Water Level (ft)
Monitoring Well	0385493J (188085-)	15	NW	40	30
Monitoring Well	3649602F (285436-)	200	SW	80	35
Monitoring Well	0049673 (49673-MH)	215	NW	100	Not Recorded
Monitoring Well	0024460 (24460-MH)	1010	SW	38	Not Recorded
Monitoring Well	0049326 (49326-MH)	1195	SW	30	Not Recorded
Riverside Intake Canal	N/A	425	W	Surface	Not Recorded

The map displays an aerial view of the Latham 21-1 well area. A large black circle represents the ¼ mile buffer. A red dot marks the Latham 21-1 well. Blue dots mark the monitoring wells. A blue line marks the Riverside Intake Canal. A brown shaded area indicates the Bald Eagle Roost Site. Arrows point from labels to the corresponding features on the map.

- Riverside Intake Canal
- DWR Receipt # 0049673
- DWR Receipt # 0385493J
- Latham 21-1
- DWR Receipt # 3649602F
- DWR Receipt # 0024460
- DWR Receipt # 0049326

Latham 21-1 (429652): ¼ Mile Buffer - Hydrology Map

40.346020, -104.387320
NENW Sec. 1 T4N, R63W, 6th PM
Weld County, Colorado

LEGEND

WELL (API SPOT)

WATER WELL

FLOODPLAINS (FEMA)
100-Year Effective ('20)

RIVERS/STREAMS

The map displays a ¼ mile buffer around a well (API spot) in Latham 21-1 (429652). The buffer is represented by a black circle. The map includes topographic contours, floodplains, and a river/stream. A dashed line indicates a boundary, and a solid line indicates a road. The map is labeled with '4N63W 1' and 'Windmill 4535'.