

St. Croix Operating, Inc.
Horseshoe #1
NENE Section 27, T3S R49W
Washington County, Colorado

STORMWATER MANAGEMENT PLAN

St. Croix Operating, Inc. (St. Croix), has drafted this stormwater management plan in accordance with Rules 304.c.(15) and 1002.f.

1. Oil and Gas Location and Construction Site Details

This is a proposed oil and gas location that will have one vertical well.

The constructed location disturbance is proposed to be 5.83 acres of disturbance.

The proposed access road is approximately 2,314 feet in length. It incorporates approximately 1.06 acres of disturbance.

The oil and gas location will scrape topsoil and stockpile it. The location's cut and fill areas will be constructed as per the grading plan.

One off-location flowline is proposed for this location. It will be 1,658 feet in length and will incorporate 1.14 acres of disturbance.

2. Supplemental Site Information

This plan covers one well location, the proposed Horseshoe #1.

The location consists of Valent sand, which has a runoff class of Very Low. This location is proposed within an irrigated cropfield. This location will undergo reclamation during the first planting season after being put onto production. The reseeding and irrigated crop growth will expedite site stabilization. The minimal elevation changes across location will also minimize any erosion potential.

The area is irrigated cropland.

There are currently no known weed infestations.

No non-stormwater discharges are planned for this location.

Stormwater drainage in the area would flow southwest to northeast. There are no mapped drainages in the area. The nearest mapped waterway is 6 miles to the south.

3. Stormwater Management Control Measures

Potential pollution sources for the location during the initial construction, drilling and completions operations phase:

- Sediment resulting from erosion of the disturbed and stored soils. These will be controlled by constructing the location in accordance with the recommended practices and industry standards. Sediment basins and diversion dikes will help keep any errant soils from leaving location.
- Vehicle tracking of sediments is not expected to be a concern since all sites are accessed from dirt roads.
- Trash and debris from clearing activities, construction materials, and workers will be mitigated by keeping sufficient trash containers on location and emptying them regularly.
- Dust generation will be controlled as-needed through times of heavy traffic periods to keep fugitive dusts from migrating towards surface water bodies.
- Portable toilets will be staked in place to prevent potential contamination from movement of the portable toilet structures.

Production / Interim Reclamation / Stabilization Phase:

- Potential pollution sources will be primarily centered around the unstabilized surface of the location.
- The wellhead may also be a potential source of spills. This area will be inspected regularly to verify compliance and no materials are being spilled on location.

St. Croix intends to locate a sediment basin on the eastern side of the location to catch any runoff that may leave location.

Once the location is constructed, this plan will be revisited regularly to insure all structural best management practices (BMPs) are working appropriately or will be adjusted.

4. Site-Specific Construction and Stormwater/Erosion Control Measures

Please see the attached drawings.

5. Inspections and Maintenance Procedures

St. Croix will have a trained person familiar with the stormwater management plan and stormwater controls conducting inspections. The designated personnel inspecting location will walk the perimeter to verify no erosion is occurring and no potential contaminants are leaving site. They will inspect the wellhead and separators as well to verify no spills have occurred.

The designated personnel will inspect each structural BMP to identify that it is functioning as intended and does not require maintenance. If maintenance is needed, or if it is not functioning as intended, the personnel will discuss with St. Croix's operational team other solutions to implement on the location to comply with Colorado stormwater regulations.

In accordance with Colorado Department of Public Health and Environment requirements, documented inspections will occur every 7 days until the location is stabilized. Upon stabilization, documented inspections will occur monthly. Monthly inspections will occur on the location until the location undergoes final stabilization.

Washington County does not have their own stormwater management regulations.

6. Site-Specific Construction and Stormwater/Erosion Control BMPs

St. Croix will comply with COGCC Rule 1002.f.(2). by utilizing BMPs at the oil and gas location to control stormwater runoff in a manner that minimizes erosion, transport of sediment offsite, site degradation and protects surface waters. Examples of engineering controls that could be used when needed are: surface roughening during reseeding; sediment traps; straw wattles.

Good housekeeping practices will be used to reduce the risk of spills or other accidental exposure of materials and substances to Stormwater runoff. The following housekeeping practices will be followed onsite during the construction project: No solid materials, including building materials, shall be discharged to State waters; vehicular traffic will be minimized as much as possible to reduce nuisance dust and prevent further soil erosion; any trash generated during the project will be disposed of properly; Any chemicals used will be kept to a minimum; any chemical or oil spills will be cleaned up immediately in accordance with established company procedures; all materials will be stored in a neat and orderly manner in their appropriate containers; follow manufacturers' recommendations and company policies for proper use and disposal of products.

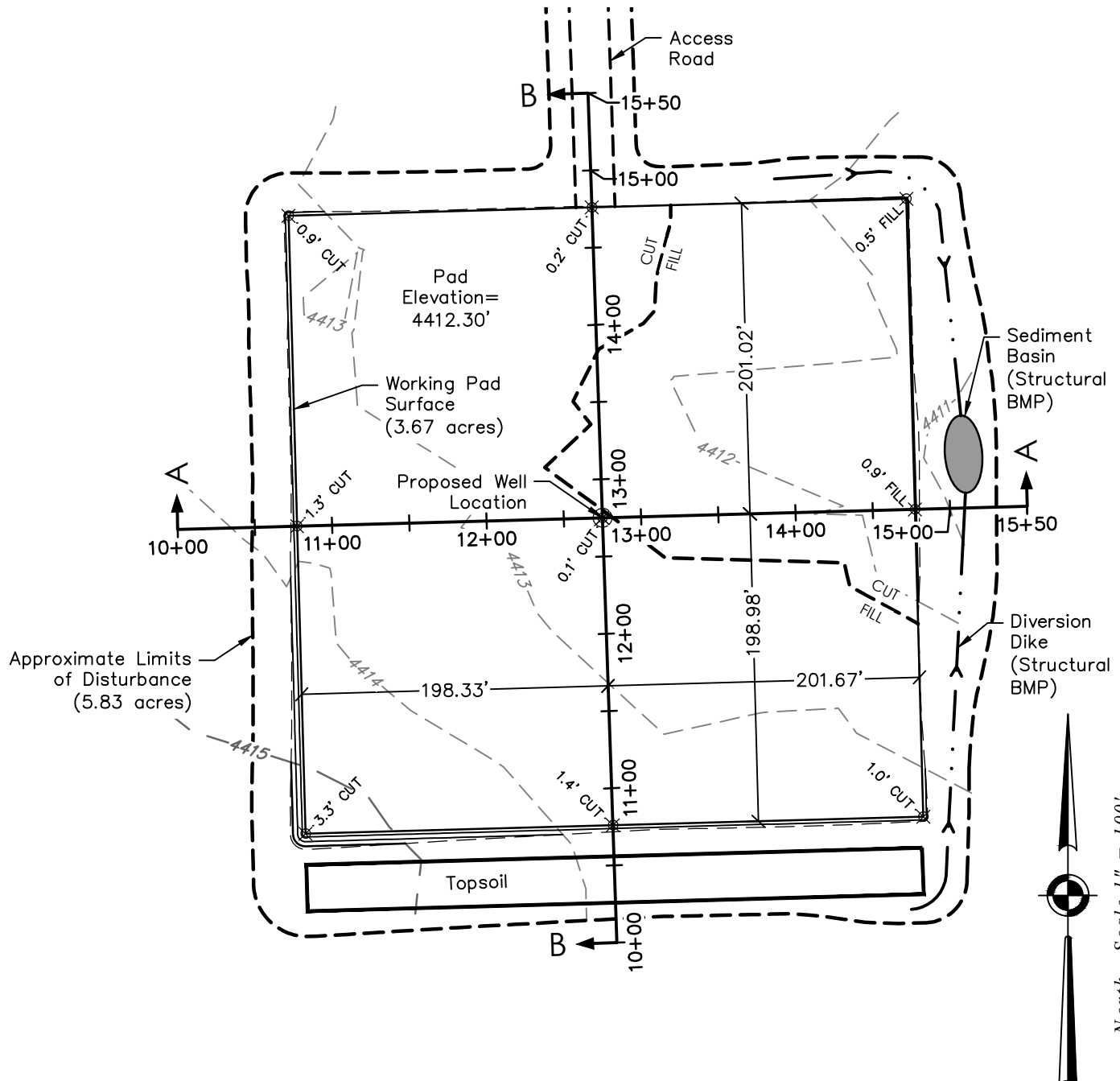
Inspections will occur every 7 days from commencement of construction until initial stabilization/production phase. Thereafter inspections will occur monthly until final stabilization.

All spills will be immediately assessed and if there is potential for the spill leaving the site, temporary measures will be used to prevent transport off site.

Notification procedures to be used in the event of a material release or accident. At a minimum, the Stormwater Manager must be notified. Depending on the nature of the spill and the material involved, St. Croix, COGCC, CDPHE, downstream water users, or other agencies may also need to be notified. The WQCD toll- free 24-hour environmental emergency spill reporting line is (877) 518-5608.

If petroleum hydrocarbons or other chemicals impact stormwater as a result of activities onsite, the impacted stormwater will be addressed by following the St. Croix Spill Plan, and Waste Management Plan if applicable waste is generated.

Pad Layout Drawing



Notes:

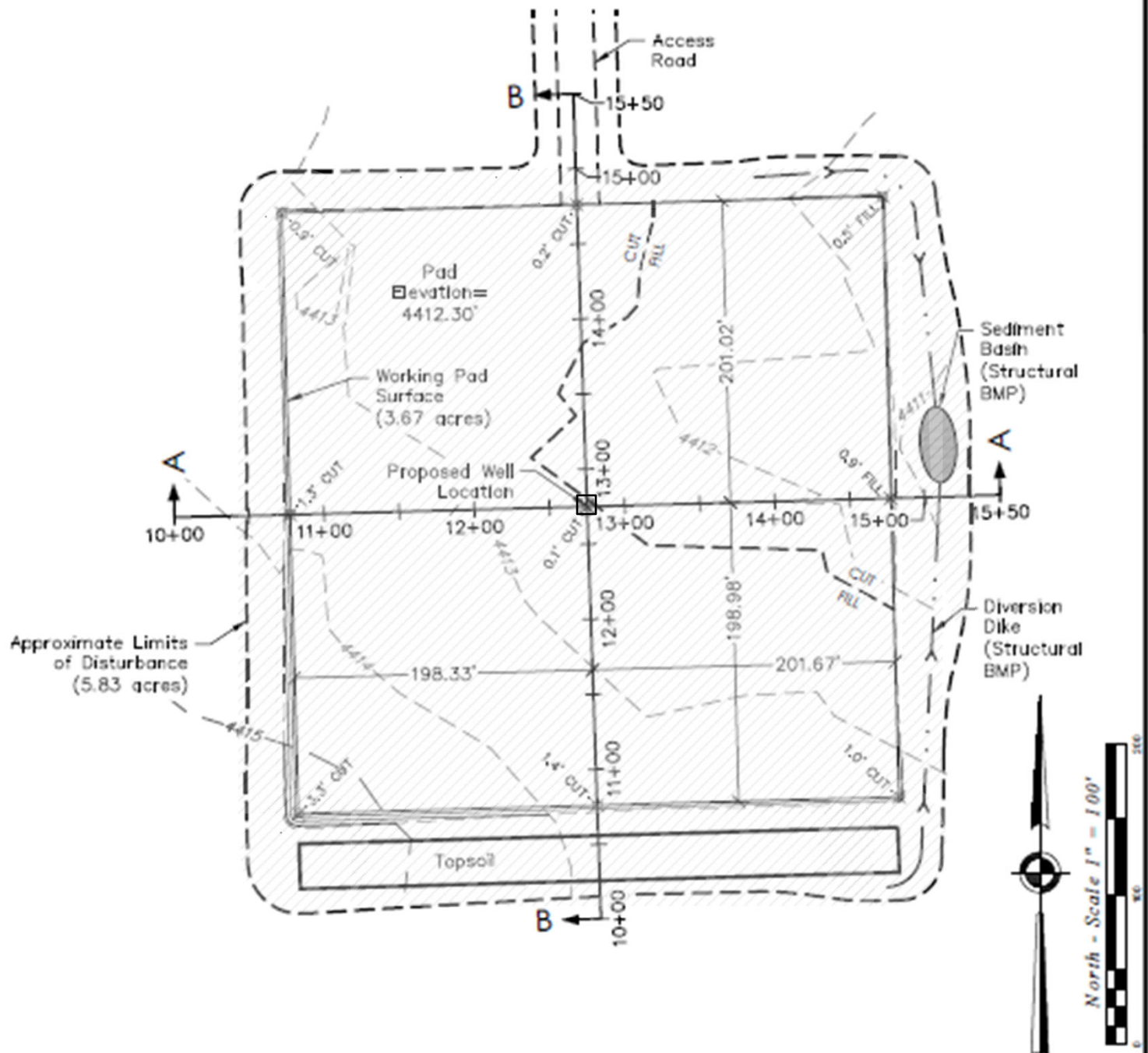
- Elevations based on NAVD 88 Datum.
- A 15% allowance is made for compaction loss.

Pad Dim: 400' x 400' Pad Grade: 4412.30'				
Estimated Earthwork (Cubic Yards)				
Cut	Fill	Compaction Loss	Topsoil	Excess
3,750	523	78	3148	1
Cut includes 6" topsoil depth				

G:\Projects\21-1047-00 Oil Pads (PLS)\04 Drawings\Exhibits\02_Horseshoe #1\Horseshoe #1 - C&F Exhibit.dwg September 22, 2021 2:43pm

Well Name:	Horseshoe #1	Field Date 07.12.2021	Prepared for:	Project#: 21028.001
		Party Chief BAB	St Croix Operating, LLC	
S27-T03S-R49W-6 PM		Survey Tech N/A		
Washington County, CO		Proj. Manager BAB		
PLS Corporation 532 West 66th Street Loveland, Colorado 80538 970.669.2100 - info@plscorporation.com				

Interim Reclamation Drawing



Notes:

- Elevations based on NAVD 88 Datum.
- A 15% allowance is made for compaction loss.

Pad Dim: 400' x 400' Pad Grade: 4412.30'				
Estimated Earthwork (Cubic Yards)				
Cut	Fill	Compaction Loss	Topsoil	Excess
3,750	523	78	3148	1
Cut includes 6" topsoil depth				

G:\Projects\21-0047-00 Off Pad (PLS)\04 Grading\Drawings\Horseshoe #1\Horseshoe #1 - C&P 0418.dwg September 22, 2021 - 2:40pm

Well Name:	Horseshoe #1	Field Date	07.12.2021	Prepared for:	Project#: 21028.001
		Party Chief	BAB	St Croix Operating, LLC	
S27-T03S-R49W-6 PM		Survey Tech	N/A		
Washington County, CO		Proj. Manager	BAB		
				PLS Corporation 532 West 66th Street Loveland, Colorado 80538 970.669.2100 - info@plscorporation.com	