



Mull Drilling Company, Inc.
1700 N. Waterfront Parkway, Bld. 1200
Wichita, Kansas 67206
Tel: +1 316.264.6366
Fax: +1 316.264.6440
www.mulldrlg.com

March 23, 2022

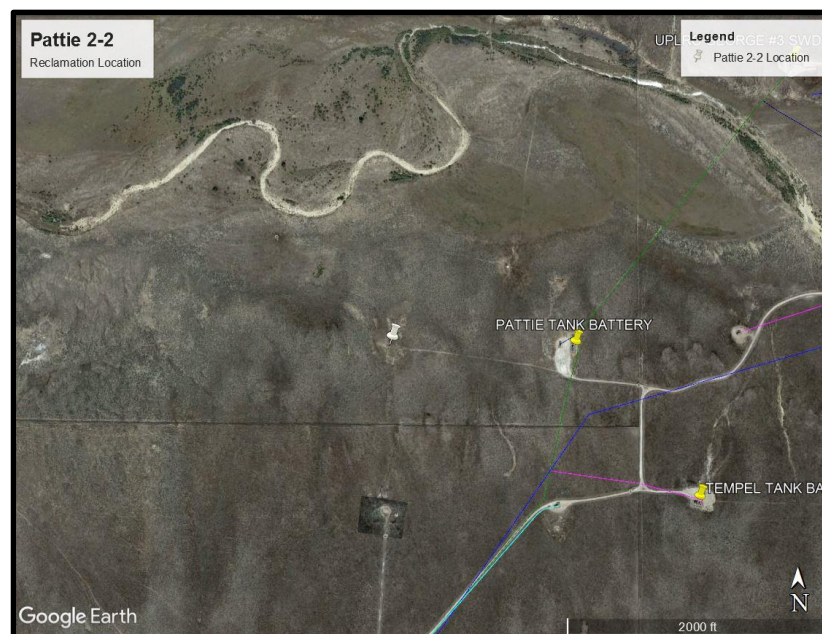
Mr. Jason Kosola, P.G.
Southeast Environmental Protection Specialist
Colorado Oil & Gas Conservation Commission
1120 Lincoln Street, Suite 801
Denver, Colorado 80203

RE: Pattie 2-2
API # 05-061-06780
Soils Investigation Sampling Plan
COGCC Form 4 Sundry Doc# 690202493

Mr. Kosola:

Mull Drilling Co., Inc (Mull) is providing this update to the Colorado Oil and Gas Commission (COGCC) for a preliminary Soils Investigation at the Pattie 2-2 Location. It is also being submitted to provide an estimated mobilization/sampling date for the location of late April/Early May 2022. The location in question was brought to Mull's attention through submission of a Form 4 sundry filed in 2021, requesting Final Reclamation Inspection. The Pattie 2-2 was abandoned in 11/26/2007.

During an Aerial Drone inspection of the area on 11/1/21, Ryan Costa, a COGCC Reclamation Official, observed that there was a portion of the location – approximately 100' x 100' – that did not display the appropriate 80% vegetative regrowth. It was noted that there may be soil issues in the area that are impacting any potential regrowth.



Site Location

A licensed geologist – or an Environmental Professional plans to mobilize to the location and verify the presence of any soil impacts. The location will be sampled with a Photo Ionization Detector (PID) for hydrocarbons under approved soil sampling techniques and then secondary sampling will occur for Table 915-1 analysis: it is expected two to three total samples will be taken on the location.


All samples will be taken within the first foot of the surface with a steel auger. Should any of these locations appear impacted in that range, a second sample at that location shall be taken at a depth that appears to be non-impacted.

Concurrently, Mull will take approximately 4 background samples around the perimeter of the area to measure the background. This will allow Mull to determine if relatively high arsenic values exist onsite as they do in other operations areas. All locations will be Geo-located using GPS. And all samples will be submitted to Pace Laboratories of Kansas for analysis following approved chain of custody protocols.

Please see **Figure I** for potential sampling locations.

Assuming the results come back impacted, or should the COGCC determine that it is required, the location will be excavated for impacted soils and disposed to Phantom Landfill of Penrose Colorado, EPA #COR000208454 or a similar permitted Colorado or Kansas Facility under an approved waste profile. Clean soils shall then be transported and placed in the excavated area as required to re-contour the area. The area shall then be tilled, replanted with an approved NRCS seed mix and slated for reclamation responsibilities.

Should there be any questions or concerns feel free to contact us,

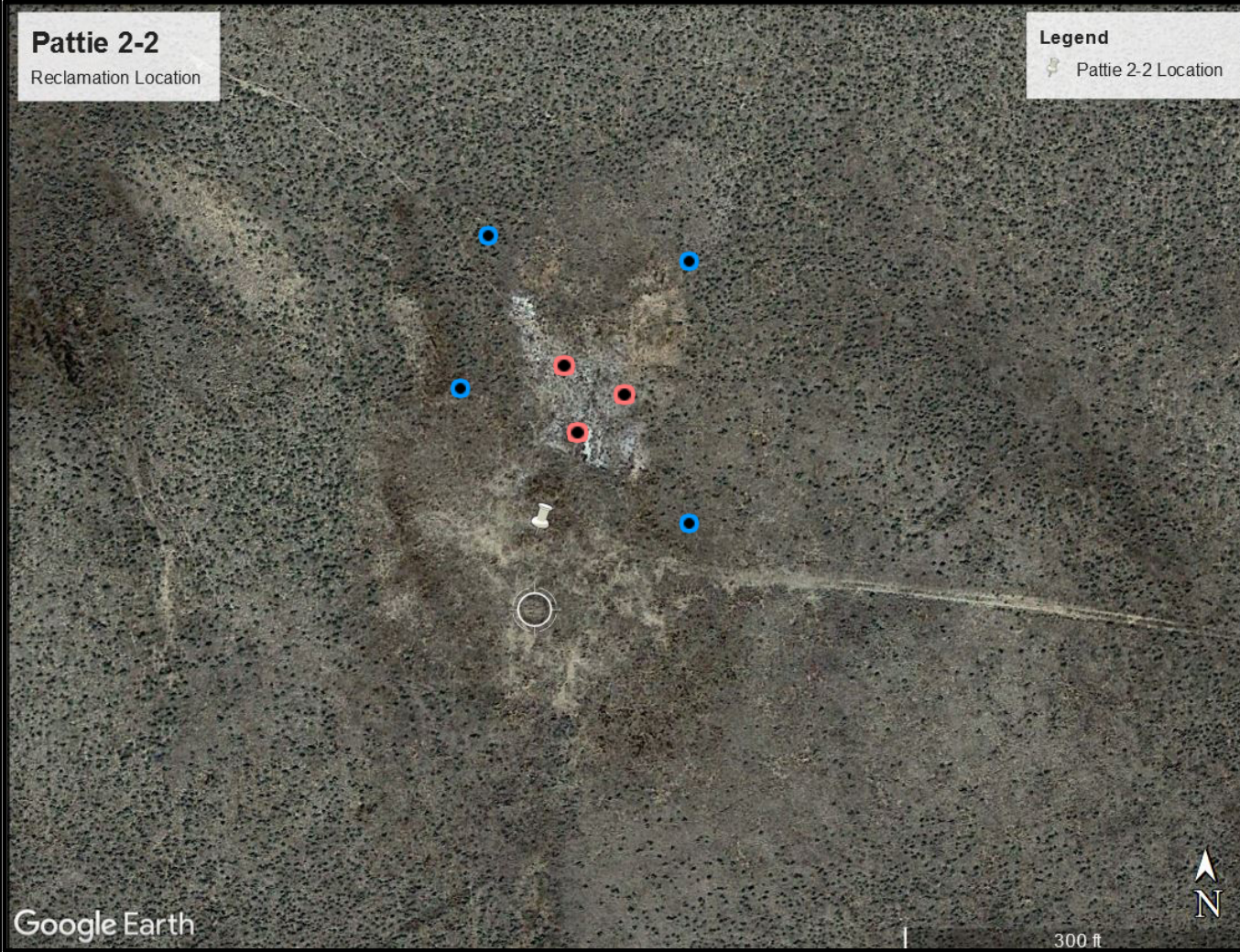
A handwritten signature in black ink that reads "James Beilman". The signature is written in a cursive, flowing style.

James Beilman, PG, CPG
Environmental / Safety Manager
Tel: +1 316.264.6366 (128)
Cell: +1 316.364.9203
JBeilman@Mulldrilling.com

Reviewed by:
Mark Shreve, President

Attachments:
Figure I – Potential Sampling Locations

Figure I: Potential Sampling Locations



Legend

Blue Points:
Background Samples

Red Points:
Potentially Impacted Samples

Regulatory Limits as COGCC
promulgated table 915-1

Location:	Latitude: 38.601392	Longitude: -102.755839	Remediation Proj.#	
State:	Colorado			
County:	Kiowa			

