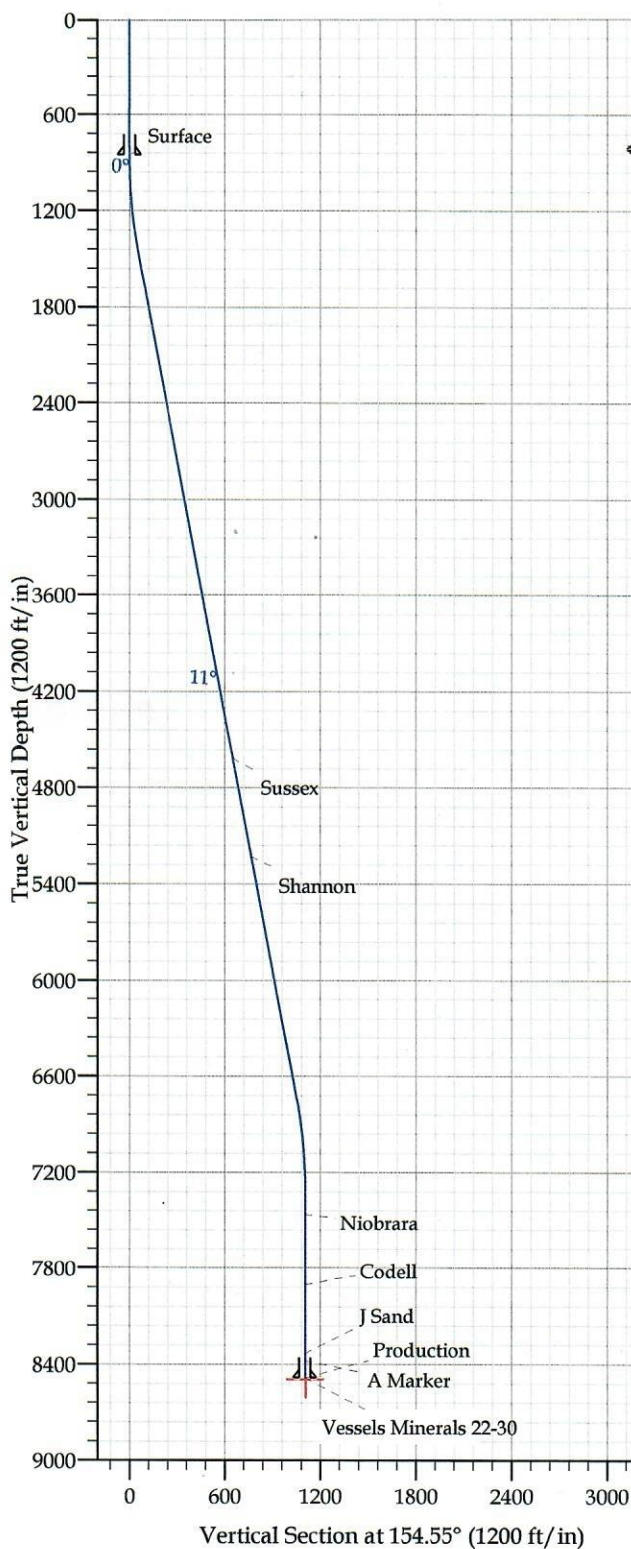




02529489

123-36009



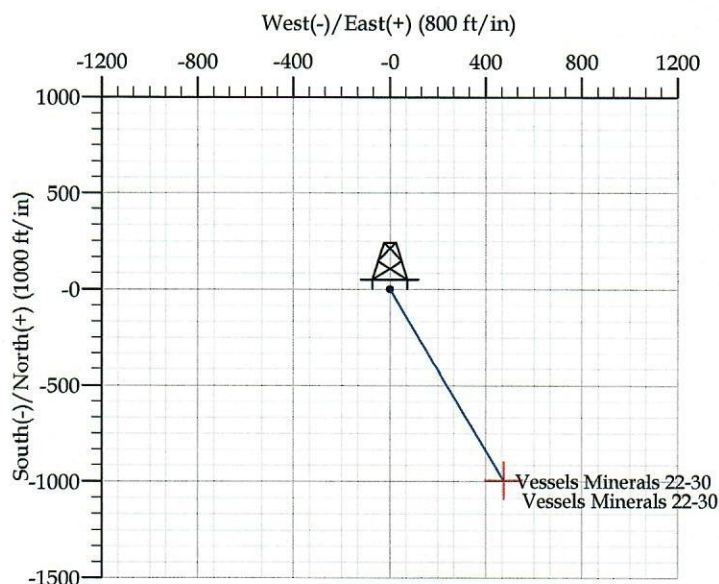
Co-ordinate (N/E) Reference: Well Vessels Minerals 22-30, True North
Vertical (TVD) Reference: WELL @ 5088.0ft (Original Well Elev)
Section (VS) Reference: Slot - (0.0N, 0.0E)
Measured Depth Reference: WELL @ 5088.0ft (Original Well Elev)
Calculation Method:

WELL DETAILS: Vessels Minerals 22-30

+N/-S	+E/-W	Northing	Ground Level: Easting	5075.0 Latitude	Longitude	Slot
0.0	0.0	1252700.37	3126163.02	40° 1' 34.212 N	05° 2' 58.164 W	

SECTION DETAILS

Sec	MD	Inc	Azi	TVD	+N/-S	+E/-W	DLeg	TFace	VSec	Target
1	0.0	0.00	0.00	0.0	0.0	0.0	0.00	0.00	0.0	
2	900.0	0.00	0.00	900.0	0.0	0.0	0.00	0.00	0.0	
3	1433.3	10.67	154.55	1430.2	-44.7	21.3	2.00	154.55	49.5	
4	6849.5	10.67	154.55	6752.8	-949.8	452.0	0.00	0.00	1051.9	
5	7382.7	0.00	0.00	7283.0	-994.5	473.3	2.00	180.00	1101.3	
6	8582.7	0.00	0.00	8483.0	-994.5	473.3	0.00	0.00	1101.3	Vessels Minerals 22-30



FORMATION TOP DETAILS

TVDPath	MDPath	Formation
4615.0	4674.1	Sussex
5228.0	5297.8	Shannon
7463.0	7562.7	Niobrara
7903.0	8002.7	Codell
8333.0	8432.7	J Sand
8378.0	8477.7	A Marker

CASING DETAILS

TVD	MD	Name	Size
850.0	850.0	Surface	8.625
8483.0	8582.7	Production	4.500

RECEIVED

SEP 02 2010

COGCC

EnCana Corporation
Planning Report - Geographic

Database:	EDM	Local Co-ordinate Reference:	Well Vessels Minerals 22-30
Company:	DJ/Paradox/WTX	TVD Reference:	WELL @ 5088.0ft (Original Well Elev)
Project:	Wattenberg	MD Reference:	WELL @ 5088.0ft (Original Well Elev)
Site:	New Drills	North Reference:	True
Well:	Vessels Minerals 22-30	Survey Calculation Method:	Minimum Curvature
Wellbore:	Wellbore #1		
Design:	Vessels Minerals 22-30		

Project	Wattenberg,		
Map System:	US State Plane 1983	System Datum:	Mean Sea Level
Geo Datum:	North American Datum 1983		
Map Zone:	Colorado Northern Zone		

Site		New Drills				
Site Position:		Northing:	1,252,450.66 ft	Latitude:	40° 1' 32.016 N	
From:	Lat/Long	Easting:	3,120,627.66 ft	Longitude:	105° 4' 9.336 W	
Position Uncertainty:		ft	Slot Radius:	in	Grid Convergence:	0.28 °

Well	Vessels Minerals 22-30					
Well Position	+N/-S	221.6 ft	Northing:	1,252,700.37 ft	Latitude:	40° 1' 34.212 N
	+E/-W	5,536.6 ft	Easting:	3,126,163.02 ft	Longitude:	105° 2' 58.164 W
Position Uncertainty		ft	Wellhead Elevation:	ft	Ground Level:	5,075.0 ft

Wellbore	Wellbore #1				
Magnetics	Model Name	Sample Date	Declination (°)	Dip Angle (°)	Field Strength (nT)
	IGRF200510	12/31/2009	9.14	66.76	53,074

Design	Vessels Minerals 22-30			
Audit Notes:				
Version:	Phase:	PROTOTYPE	Tie On Depth:	0.0
Vertical Section:	Depth From (TVD) (ft)	+N/-S (ft)	+E/-W (ft)	Direction (°)
	0.0	0.0	0.0	154.55

Plan Sections										
Measured Depth (ft)	Inclination (°)	Azimuth (°)	Vertical Depth (ft)	+N/-S (ft)	+E/-W (ft)	Dogleg Rate (°/100ft)	Build Rate (°/100ft)	Turn Rate (°/100ft)	TFO (°)	Target
0.0	0.00	0.00	0.0	0.0	0.0	0.00	0.00	0.00	0.00	
900.0	0.00	0.00	900.0	0.0	0.0	0.00	0.00	0.00	0.00	
1,433.3	10.67	154.55	1,430.2	-44.7	21.3	2.00	2.00	0.00	154.55	
6,849.5	10.67	154.55	6,752.8	-949.8	452.0	0.00	0.00	0.00	0.00	
7,382.7	0.00	0.00	7,283.0	-994.5	473.3	2.00	-2.00	0.00	180.00	
8,582.7	0.00	0.00	8,483.0	-994.5	473.3	0.00	0.00	0.00	0.00	Vessels Minerals 22-30

EnCana Corporation
Planning Report - Geographic

Database:	EDM	Local Co-ordinate Reference:	Well Vessels Minerals 22-30
Company:	DJ/Paradox/WTX	TVD Reference:	WELL @ 5088.0ft (Original Well Elev)
Project:	Wattenberg	MD Reference:	WELL @ 5088.0ft (Original Well Elev)
Site:	New Drills	North Reference:	True
Well:	Vessels Minerals 22-30	Survey Calculation Method:	Minimum Curvature
Wellbore:	Wellbore #1		
Design:	Vessels Minerals 22-30		

Planned Survey									
Measured Depth (ft)	Inclination (°)	Azimuth (°)	Vertical Depth (ft)	+N/-S (ft)	+E/-W (ft)	Map Northing (ft)	Map Easting (ft)	Latitude	Longitude
0.0	0.00	0.00	0.0	0.0	0.0	1,252,700.37	3,126,163.02	40° 1' 34.212 N	105° 2' 58.164 W
850.0	0.00	0.00	850.0	0.0	0.0	1,252,700.37	3,126,163.02	40° 1' 34.212 N	105° 2' 58.164 W
Surface									
900.0	0.00	0.00	900.0	0.0	0.0	1,252,700.37	3,126,163.02	40° 1' 34.212 N	105° 2' 58.164 W
1,433.3	10.67	154.55	1,430.2	-44.7	21.3	1,252,655.79	3,126,184.51	40° 1' 33.770 N	105° 2' 57.891 W
4,674.1	10.67	154.55	4,615.0	-586.2	279.0	1,252,115.54	3,126,445.01	40° 1' 28.418 N	105° 2' 54.577 W
Sussex									
5,297.8	10.67	154.55	5,228.0	-690.5	328.6	1,252,011.56	3,126,495.15	40° 1' 27.388 N	105° 2' 53.940 W
Shannon									
6,849.5	10.67	154.55	6,752.8	-949.8	452.0	1,251,752.90	3,126,619.87	40° 1' 24.826 N	105° 2' 52.353 W
7,382.7	0.00	0.00	7,283.0	-994.5	473.3	1,251,708.33	3,126,641.36	40° 1' 24.384 N	105° 2' 52.080 W
7,562.7	0.00	0.00	7,463.0	-994.5	473.3	1,251,708.33	3,126,641.36	40° 1' 24.384 N	105° 2' 52.080 W
Niobrara									
8,002.7	0.00	0.00	7,903.0	-994.5	473.3	1,251,708.33	3,126,641.36	40° 1' 24.384 N	105° 2' 52.080 W
Codell									
8,432.7	0.00	0.00	8,333.0	-994.5	473.3	1,251,708.33	3,126,641.36	40° 1' 24.384 N	105° 2' 52.080 W
J Sand									
8,477.7	0.00	0.00	8,378.0	-994.5	473.3	1,251,708.33	3,126,641.36	40° 1' 24.384 N	105° 2' 52.080 W
A Marker									
8,582.7	0.00	0.00	8,483.0	-994.5	473.3	1,251,708.33	3,126,641.36	40° 1' 24.384 N	105° 2' 52.080 W
Production - Vessels Minerals 22-30									

Design Targets									
Target Name	Dip Angle (°)	Dip Dir. (°)	TVD (ft)	+N/-S (ft)	+E/-W (ft)	Northing (ft)	Easting (ft)	Latitude	Longitude
- hit/miss target									
- Shape									
Vessels Minerals 22-30	0.00	0.00	8,483.0	-994.5	473.3	1,251,708.33	3,126,641.36	40° 1' 24.384 N	105° 2' 52.080 W
- plan hits target									
- Point									

Casing Points					
Measured Depth (ft)	Vertical Depth (ft)	Name	Casing Diameter (in)	Hole Diameter (in)	
850.0	850.0	Surface	8.625	12.250	
8,582.7	8,483.0	Production	4.500	7.785	

Formations					
Measured Depth (ft)	Vertical Depth (ft)	Name	Lithology	Dip (°)	Dip Direction (°)
4,674.1	4,615.0	Sussex		0.00	
5,297.8	5,228.0	Shannon		0.00	
7,562.7	7,463.0	Niobrara		0.00	
8,002.7	7,903.0	Codell		0.00	
8,432.7	8,333.0	J Sand		0.00	
8,477.7	8,378.0	A Marker		0.00	

EnCana Corporation
Planning Report - Geographic

Database:	EDM	Local Co-ordinate Reference:	Well Vessels Minerals 22-30
Company:	DJ/Paradox/WTX	TVD Reference:	WELL @ 5088.0ft (Original Well Elev)
Project:	Wattenberg	MD Reference:	WELL @ 5088.0ft (Original Well Elev)
Site:	New Drills	North Reference:	True
Well:	Vessels Minerals 22-30	Survey Calculation Method:	Minimum Curvature
Wellbore:	Wellbore #1		
Design:	Vessels Minerals 22-30		