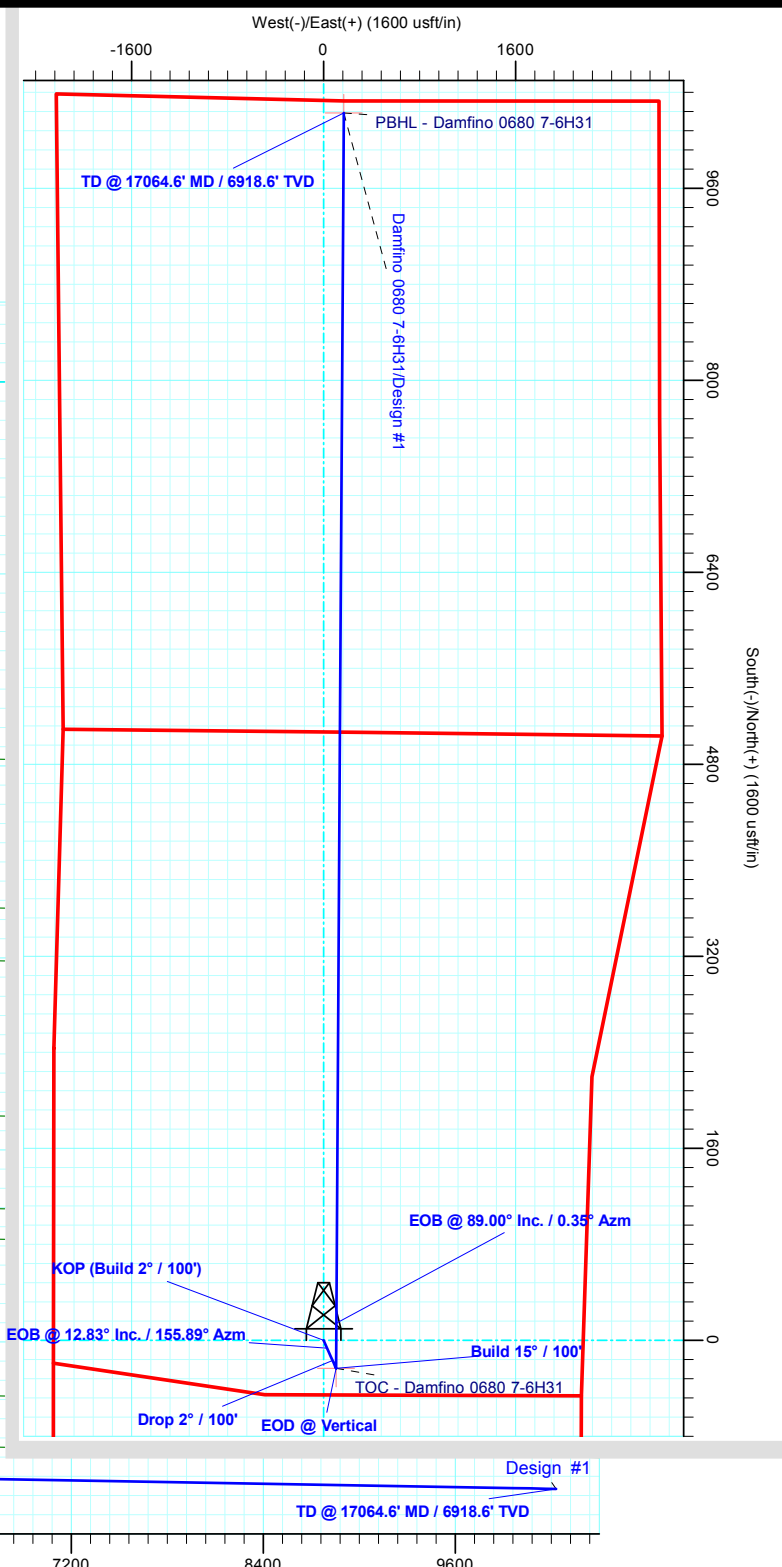
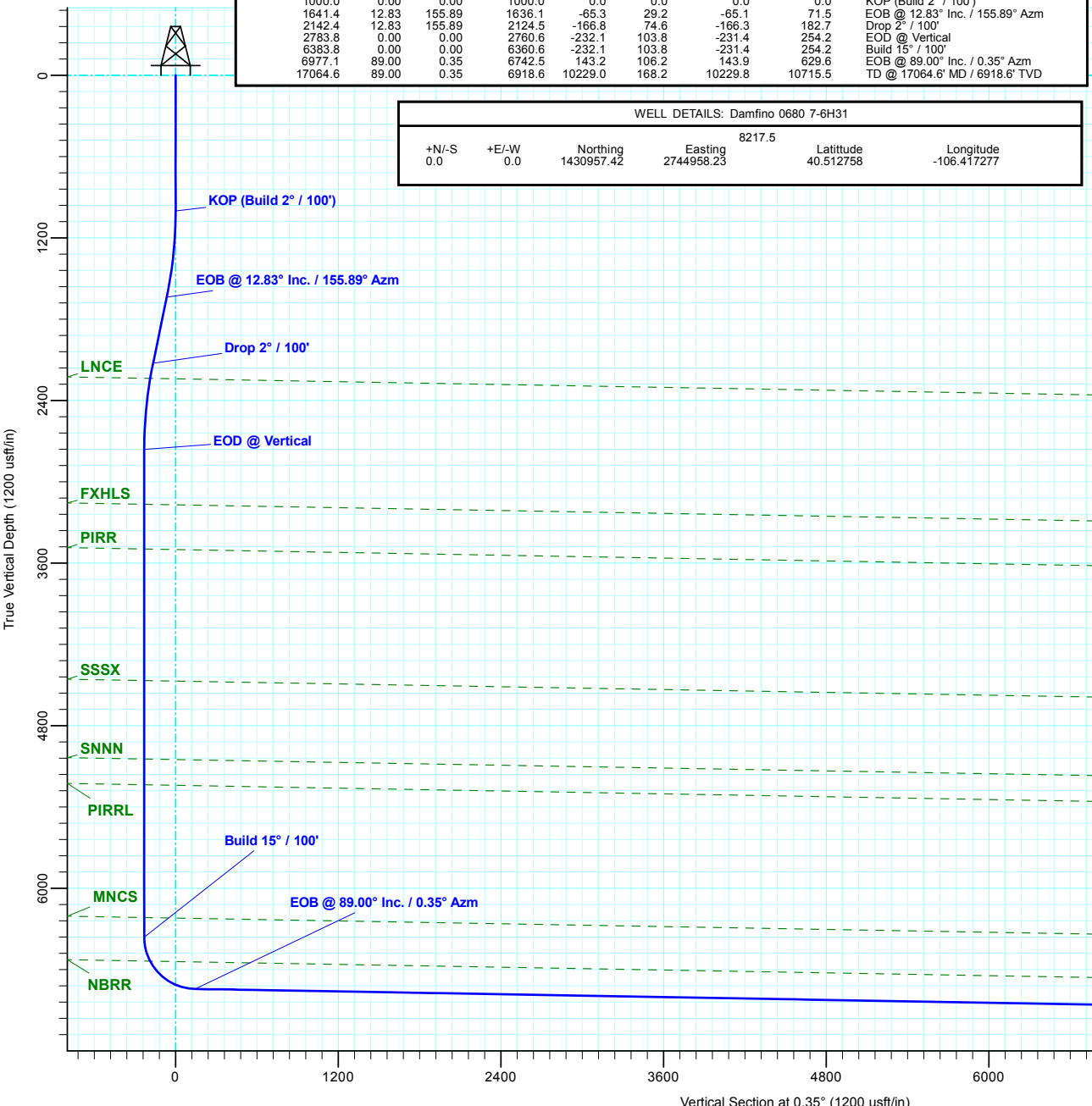




D90 Energy, LLC  
Jackson County, Colorado  
Sec 6, T6N, R80W, 6th PM  
Damfino 0680 7-6H31  
Design #1  
Cyclone #33

ANNOTATIONS									
MD	Inc	Azi	TVD	+N/-S	+E/-W	Vsect	Departure	Annotation	
1000.0	0.00	0.00	1000.0	0.0	0.0	0.0	0.0	KOP (Build 2° / 100')	
1641.4	12.83	155.89	1636.1	-65.3	29.2	-65.1	71.5	EOB @ 12.83° Inc. / 155.89° Azm	
2142.4	12.83	155.89	2124.5	-166.8	74.6	-166.3	182.7	Drop 2° / 100'	
2783.8	0.00	0.00	2760.6	-232.1	103.8	-231.4	254.2	EOD @ Vertical	
6383.8	0.00	0.00	6360.6	-232.1	103.8	-231.4	254.2	Build 15° / 100'	
6977.1	89.00	0.35	6742.5	143.2	106.2	143.9	629.6	EOB @ 89.00° Inc. / 0.35° Azm	
17064.6	89.00	0.35	6918.6	10229.0	168.2	10229.8	10715.5	TD @ 17064.6' MD / 6918.6' TVD	

WELL DETAILS: Damfino 0680 7-6H31						
8217.5						
+N/-S	+E/-W	Northing	Easting	Latitude	Longitude	
0.0	0.0	1430957.42	2744958.23	40.512758	-106.417277	





**D90 ENERGY LLC**

## **D90 Energy, LLC**

**Jackson County, Colorado  
Sec 6, T6N, R80W, 6th PM  
Damfino 0680 7-6H31**

**Wellbore #1**

**Plan: Design #1**

## **KLX Well Planning Report**

**26 April, 2021**





KLX  
Well Planning Report



<b>Database:</b>	EDM 5000.1 Single User Db	<b>Local Co-ordinate Reference:</b>	Well Damfino 0680 7-6H31
<b>Company:</b>	D90 Energy, LLC	<b>TVD Reference:</b>	well @ 8243.5usft (Cyclone #33)
<b>Project:</b>	Jackson County, Colorado	<b>MD Reference:</b>	well @ 8243.5usft (Cyclone #33)
<b>Site:</b>	Sec 6, T6N, R80W, 6th PM	<b>North Reference:</b>	True
<b>Well:</b>	Damfino 0680 7-6H31	<b>Survey Calculation Method:</b>	Minimum Curvature
<b>Wellbore:</b>	Wellbore #1		
<b>Design:</b>	Design #1		

<b>Project</b>	Jackson County, Colorado		
<b>Map System:</b>	US State Plane 1983	<b>System Datum:</b>	Mean Sea Level
<b>Geo Datum:</b>	North American Datum 1983		
<b>Map Zone:</b>	Colorado Northern Zone		

<b>Site</b>	Sec 6, T6N, R80W, 6th PM			
<b>Site Position:</b>		<b>Northing:</b>	1,430,957.42 usft	<b>Latitude:</b> 40.512758
<b>From:</b>	Map	<b>Easting:</b>	2,744,958.23 usft	<b>Longitude:</b> -106.417278
<b>Position Uncertainty:</b>	0.0 usft	<b>Slot Radius:</b>	13-3/16 "	<b>Grid Convergence:</b> -0.59 °

Well		Damfino 0680 7-6H31				
Well Position	+N/-S	0.0 usft	Northing:	1,430,957.42 usft	Latitude:	40.512758
	+E/-W	0.0 usft	Easting:	2,744,958.23 usft	Longitude:	-106.417278
Position Uncertainty		0.0 usft	Wellhead Elevation:		Ground Level:	8,217.5 usft

<b>Wellbore</b>	Wellbore #1				
<b>Magnetics</b>	<b>Model Name</b>	<b>Sample Date</b>	<b>Declination (°)</b>	<b>Dip Angle (°)</b>	<b>Field Strength (nT)</b>
	IGRF2015	9/27/2018	8.94	66.65	52,096.33717016

<b>Design</b>	Design #1			
<b>Audit Notes:</b>				
<b>Version:</b>	<b>Phase:</b>	PLAN	<b>Tie On Depth:</b>	0.0
<b>Vertical Section:</b>	<b>Depth From (TVD) (usft)</b>	<b>+N/-S (usft)</b>	<b>+E/-W (usft)</b>	<b>Direction (°)</b>
	0.0	0.0	0.0	0.35

<b>Plan Sections</b>										
<b>Measured Depth (usft)</b>	<b>Inclination (°)</b>	<b>Azimuth (°)</b>	<b>Vertical Depth (usft)</b>	<b>+N/-S (usft)</b>	<b>+E/-W (usft)</b>	<b>Dogleg Rate (°/100usft)</b>	<b>Build Rate (°/100usft)</b>	<b>Turn Rate (°/100usft)</b>	<b>TFO (°)</b>	<b>Target</b>
0.0	0.00	0.00	0.0	0.0	0.0	0.00	0.00	0.00	0.00	
1,000.0	0.00	0.00	1,000.0	0.0	0.0	0.00	0.00	0.00	0.00	
1,641.4	12.83	155.89	1,636.1	-65.3	29.2	2.00	2.00	0.00	155.89	
2,142.4	12.83	155.89	2,124.5	-166.8	74.6	0.00	0.00	0.00	0.00	
2,783.8	0.00	0.00	2,760.6	-232.1	103.8	2.00	-2.00	0.00	180.00	
6,383.8	0.00	0.00	6,360.6	-232.1	103.8	0.00	0.00	0.00	0.00	TOC - Damfino 068
6,977.1	89.00	0.35	6,742.5	143.2	106.2	15.00	15.00	0.06	0.35	
17,064.6	89.00	0.35	6,918.6	10,229.0	168.2	0.00	0.00	0.00	0.00	PBHL - Damfino 06

**Database:** EDM 5000.1 Single User Db  
**Company:** D90 Energy, LLC  
**Project:** Jackson County, Colorado  
**Site:** Sec 6, T6N, R80W, 6th PM  
**Well:** Damfino 0680 7-6H31  
**Wellbore:** Wellbore #1  
**Design:** Design #1

**Local Co-ordinate Reference:**  
**TVD Reference:**  
**MD Reference:**  
**North Reference:**  
**Survey Calculation Method:**

Well Damfino 0680 7-6H31  
 well @ 8243.5usft (Cyclone #33)  
 well @ 8243.5usft (Cyclone #33)  
 True  
 Minimum Curvature

## Planned Survey

Measured Depth (usft)	Inclination (°)	Azimuth (°)	Vertical Depth (usft)	+N/-S (usft)	+E/-W (usft)	Vertical Section (usft)	Dogleg Rate (°/100usft)	Build Rate (°/100usft)	Turn Rate (°/100usft)
0.0	0.00	0.00	0.0	0.0	0.0	0.0	0.00	0.00	0.00
100.0	0.00	0.00	100.0	0.0	0.0	0.0	0.00	0.00	0.00
200.0	0.00	0.00	200.0	0.0	0.0	0.0	0.00	0.00	0.00
300.0	0.00	0.00	300.0	0.0	0.0	0.0	0.00	0.00	0.00
400.0	0.00	0.00	400.0	0.0	0.0	0.0	0.00	0.00	0.00
500.0	0.00	0.00	500.0	0.0	0.0	0.0	0.00	0.00	0.00
600.0	0.00	0.00	600.0	0.0	0.0	0.0	0.00	0.00	0.00
700.0	0.00	0.00	700.0	0.0	0.0	0.0	0.00	0.00	0.00
800.0	0.00	0.00	800.0	0.0	0.0	0.0	0.00	0.00	0.00
900.0	0.00	0.00	900.0	0.0	0.0	0.0	0.00	0.00	0.00
<b>KOP (Build 2° / 100')</b>									
1,000.0	0.00	0.00	1,000.0	0.0	0.0	0.0	0.00	0.00	0.00
1,100.0	2.00	155.89	1,100.0	-1.6	0.7	-1.6	2.00	2.00	0.00
1,200.0	4.00	155.89	1,199.8	-6.4	2.9	-6.4	2.00	2.00	0.00
1,300.0	6.00	155.89	1,299.5	-14.3	6.4	-14.3	2.00	2.00	0.00
1,400.0	8.00	155.89	1,398.7	-25.4	11.4	-25.4	2.00	2.00	0.00
1,500.0	10.00	155.89	1,497.5	-39.7	17.8	-39.6	2.00	2.00	0.00
1,600.0	12.00	155.89	1,595.6	-57.1	25.6	-57.0	2.00	2.00	0.00
<b>EOB @ 12.83° Inc. / 155.89° Azm</b>									
1,641.4	12.83	155.89	1,636.1	-65.3	29.2	-65.1	2.00	2.00	0.00
1,700.0	12.83	155.89	1,693.2	-77.1	34.5	-76.9	0.00	0.00	0.00
1,800.0	12.83	155.89	1,790.7	-97.4	43.6	-97.1	0.00	0.00	0.00
1,900.0	12.83	155.89	1,888.2	-117.7	52.7	-117.4	0.00	0.00	0.00
2,000.0	12.83	155.89	1,985.7	-137.9	61.7	-137.6	0.00	0.00	0.00
2,100.0	12.83	155.89	2,083.2	-158.2	70.8	-157.8	0.00	0.00	0.00
<b>Drop 2° / 100'</b>									
2,142.4	12.83	155.89	2,124.5	-166.8	74.6	-166.3	0.00	0.00	0.00
2,200.0	11.68	155.89	2,180.8	-178.0	79.6	-177.5	2.00	-2.00	0.00
<b>LNCE</b>									
2,257.0	10.54	155.89	2,236.7	-188.0	84.1	-187.5	2.00	-2.00	0.00
2,300.0	9.68	155.89	2,279.1	-194.9	87.2	-194.3	2.00	-2.00	0.00
2,400.0	7.68	155.89	2,378.0	-208.6	93.4	-208.1	2.00	-2.00	0.00
2,500.0	5.68	155.89	2,477.3	-219.2	98.1	-218.6	2.00	-2.00	0.00
2,600.0	3.68	155.89	2,576.9	-226.7	101.4	-226.1	2.00	-2.00	0.00
2,700.0	1.68	155.89	2,676.8	-230.9	103.3	-230.3	2.00	-2.00	0.00
<b>EOD @ Vertical</b>									
2,783.8	0.00	0.00	2,760.6	-232.1	103.8	-231.4	2.00	-2.00	-186.04
2,800.0	0.00	0.00	2,776.8	-232.1	103.8	-231.4	0.00	0.00	0.00
2,900.0	0.00	0.00	2,876.8	-232.1	103.8	-231.4	0.00	0.00	0.00
3,000.0	0.00	0.00	2,976.8	-232.1	103.8	-231.4	0.00	0.00	0.00
3,100.0	0.00	0.00	3,076.8	-232.1	103.8	-231.4	0.00	0.00	0.00
<b>FXHLS</b>									
3,189.2	0.00	0.00	3,166.0	-232.1	103.8	-231.4	0.00	0.00	0.00
3,200.0	0.00	0.00	3,176.8	-232.1	103.8	-231.4	0.00	0.00	0.00
3,300.0	0.00	0.00	3,276.8	-232.1	103.8	-231.4	0.00	0.00	0.00
3,400.0	0.00	0.00	3,376.8	-232.1	103.8	-231.4	0.00	0.00	0.00
3,500.0	0.00	0.00	3,476.8	-232.1	103.8	-231.4	0.00	0.00	0.00
<b>PIRR</b>									
3,519.2	0.00	0.00	3,496.0	-232.1	103.8	-231.4	0.00	0.00	0.00
3,600.0	0.00	0.00	3,576.8	-232.1	103.8	-231.4	0.00	0.00	0.00
3,700.0	0.00	0.00	3,676.8	-232.1	103.8	-231.4	0.00	0.00	0.00
3,800.0	0.00	0.00	3,776.8	-232.1	103.8	-231.4	0.00	0.00	0.00
3,900.0	0.00	0.00	3,876.8	-232.1	103.8	-231.4	0.00	0.00	0.00

**Database:** EDM 5000.1 Single User Db  
**Company:** D90 Energy, LLC  
**Project:** Jackson County, Colorado  
**Site:** Sec 6, T6N, R80W, 6th PM  
**Well:** Damfino 0680 7-6H31  
**Wellbore:** Wellbore #1  
**Design:** Design #1

**Local Co-ordinate Reference:** Well Damfino 0680 7-6H31  
**TVD Reference:** well @ 8243.5usft (Cyclone #33)  
**MD Reference:** well @ 8243.5usft (Cyclone #33)  
**North Reference:** True  
**Survey Calculation Method:** Minimum Curvature

## Planned Survey

Measured Depth (usft)	Inclination (°)	Azimuth (°)	Vertical Depth (usft)	+N/-S (usft)	+E/-W (usft)	Vertical Section (usft)	Dogleg Rate (°/100usft)	Build Rate (°/100usft)	Turn Rate (°/100usft)
4,000.0	0.00	0.00	3,976.8	-232.1	103.8	-231.4	0.00	0.00	0.00
4,100.0	0.00	0.00	4,076.8	-232.1	103.8	-231.4	0.00	0.00	0.00
4,200.0	0.00	0.00	4,176.8	-232.1	103.8	-231.4	0.00	0.00	0.00
4,300.0	0.00	0.00	4,276.8	-232.1	103.8	-231.4	0.00	0.00	0.00
4,400.0	0.00	0.00	4,376.8	-232.1	103.8	-231.4	0.00	0.00	0.00
<b>SSSX</b>									
4,489.2	0.00	0.00	4,466.0	-232.1	103.8	-231.4	0.00	0.00	0.00
4,500.0	0.00	0.00	4,476.8	-232.1	103.8	-231.4	0.00	0.00	0.00
4,600.0	0.00	0.00	4,576.8	-232.1	103.8	-231.4	0.00	0.00	0.00
4,700.0	0.00	0.00	4,676.8	-232.1	103.8	-231.4	0.00	0.00	0.00
4,800.0	0.00	0.00	4,776.8	-232.1	103.8	-231.4	0.00	0.00	0.00
4,900.0	0.00	0.00	4,876.8	-232.1	103.8	-231.4	0.00	0.00	0.00
5,000.0	0.00	0.00	4,976.8	-232.1	103.8	-231.4	0.00	0.00	0.00
<b>SNNN</b>									
5,069.2	0.00	0.00	5,046.0	-232.1	103.8	-231.4	0.00	0.00	0.00
5,100.0	0.00	0.00	5,076.8	-232.1	103.8	-231.4	0.00	0.00	0.00
5,200.0	0.00	0.00	5,176.8	-232.1	103.8	-231.4	0.00	0.00	0.00
<b>PIRRL</b>									
5,259.2	0.00	0.00	5,236.0	-232.1	103.8	-231.4	0.00	0.00	0.00
5,300.0	0.00	0.00	5,276.8	-232.1	103.8	-231.4	0.00	0.00	0.00
5,400.0	0.00	0.00	5,376.8	-232.1	103.8	-231.4	0.00	0.00	0.00
5,500.0	0.00	0.00	5,476.8	-232.1	103.8	-231.4	0.00	0.00	0.00
5,600.0	0.00	0.00	5,576.8	-232.1	103.8	-231.4	0.00	0.00	0.00
5,700.0	0.00	0.00	5,676.8	-232.1	103.8	-231.4	0.00	0.00	0.00
5,800.0	0.00	0.00	5,776.8	-232.1	103.8	-231.4	0.00	0.00	0.00
5,900.0	0.00	0.00	5,876.8	-232.1	103.8	-231.4	0.00	0.00	0.00
6,000.0	0.00	0.00	5,976.8	-232.1	103.8	-231.4	0.00	0.00	0.00
6,100.0	0.00	0.00	6,076.8	-232.1	103.8	-231.4	0.00	0.00	0.00
6,200.0	0.00	0.00	6,176.8	-232.1	103.8	-231.4	0.00	0.00	0.00
<b>MNCS</b>									
6,239.2	0.00	0.00	6,216.0	-232.1	103.8	-231.4	0.00	0.00	0.00
6,300.0	0.00	0.00	6,276.8	-232.1	103.8	-231.4	0.00	0.00	0.00
<b>Build 15° / 100'</b>									
6,383.8	0.00	0.00	6,360.6	-232.1	103.8	-231.4	0.00	0.00	0.00
6,400.0	2.43	0.35	6,376.8	-231.7	103.9	-231.1	15.00	15.00	0.00
6,425.0	6.18	0.35	6,401.7	-229.8	103.9	-229.2	15.00	15.00	0.00
6,450.0	9.93	0.35	6,426.5	-226.3	103.9	-225.7	15.00	15.00	0.00
6,475.0	13.68	0.35	6,450.9	-221.2	103.9	-220.6	15.00	15.00	0.00
6,500.0	17.43	0.35	6,475.0	-214.5	104.0	-213.9	15.00	15.00	0.00
6,525.0	21.18	0.35	6,498.6	-206.3	104.0	-205.6	15.00	15.00	0.00
6,550.0	24.93	0.35	6,521.6	-196.5	104.1	-195.8	15.00	15.00	0.00
<b>NBRR</b>									
6,566.8	27.46	0.35	6,536.7	-189.0	104.1	-188.4	15.00	15.00	0.00
6,575.0	28.68	0.35	6,543.9	-185.2	104.1	-184.6	15.00	15.00	0.00
6,600.0	32.43	0.35	6,565.4	-172.5	104.2	-171.9	15.00	15.00	0.00
6,625.0	36.18	0.35	6,586.1	-158.4	104.3	-157.8	15.00	15.00	0.00
6,650.0	39.93	0.35	6,605.8	-143.0	104.4	-142.4	15.00	15.00	0.00
6,675.0	43.68	0.35	6,624.4	-126.3	104.5	-125.7	15.00	15.00	0.00
6,700.0	47.43	0.35	6,641.9	-108.5	104.6	-107.9	15.00	15.00	0.00
6,725.0	51.18	0.35	6,658.2	-89.5	104.7	-88.9	15.00	15.00	0.00
6,750.0	54.93	0.35	6,673.2	-69.6	104.8	-68.9	15.00	15.00	0.00
6,775.0	58.68	0.35	6,686.9	-48.7	105.0	-48.0	15.00	15.00	0.00
6,800.0	62.43	0.35	6,699.2	-26.9	105.1	-26.2	15.00	15.00	0.00

**Database:** EDM 5000.1 Single User Db  
**Company:** D90 Energy, LLC  
**Project:** Jackson County, Colorado  
**Site:** Sec 6, T6N, R80W, 6th PM  
**Well:** Damfino 0680 7-6H31  
**Wellbore:** Wellbore #1  
**Design:** Design #1

**Local Co-ordinate Reference:**  
**TVD Reference:**  
**MD Reference:**  
**North Reference:**  
**Survey Calculation Method:**

Well Damfino 0680 7-6H31  
 well @ 8243.5usft (Cyclone #33)  
 well @ 8243.5usft (Cyclone #33)  
 True  
 Minimum Curvature

## Planned Survey

Measured Depth (usft)	Inclination (°)	Azimuth (°)	Vertical Depth (usft)	+N/-S (usft)	+E/-W (usft)	Vertical Section (usft)	Dogleg Rate (°/100usft)	Build Rate (°/100usft)	Turn Rate (°/100usft)
6,825.0	66.18	0.35	6,710.0	-4.4	105.2	-3.7	15.00	15.00	0.00
6,850.0	69.93	0.35	6,719.4	18.8	105.4	19.5	15.00	15.00	0.00
6,875.0	73.68	0.35	6,727.2	42.6	105.5	43.2	15.00	15.00	0.00
6,900.0	77.43	0.35	6,733.4	66.8	105.7	67.4	15.00	15.00	0.00
6,925.0	81.18	0.35	6,738.1	91.3	105.8	92.0	15.00	15.00	0.00
6,950.0	84.93	0.35	6,741.1	116.1	106.0	116.8	15.00	15.00	0.00
<b>EOB @ 89.00° Inc. / 0.35° Azm</b>									
6,977.1	89.00	0.35	6,742.5	143.2	106.2	143.9	15.00	15.00	0.00
7,000.0	89.00	0.35	6,742.9	166.1	106.3	166.7	0.00	0.00	0.00
7,100.0	89.00	0.35	6,744.7	266.1	106.9	266.7	0.00	0.00	0.00
7,200.0	89.00	0.35	6,746.4	366.1	107.5	366.7	0.00	0.00	0.00
7,300.0	89.00	0.35	6,748.1	466.0	108.1	466.7	0.00	0.00	0.00
7,400.0	89.00	0.35	6,749.9	566.0	108.8	566.7	0.00	0.00	0.00
7,500.0	89.00	0.35	6,751.6	666.0	109.4	666.7	0.00	0.00	0.00
7,600.0	89.00	0.35	6,753.4	766.0	110.0	766.7	0.00	0.00	0.00
7,700.0	89.00	0.35	6,755.1	866.0	110.6	866.6	0.00	0.00	0.00
7,800.0	89.00	0.35	6,756.9	966.0	111.2	966.6	0.00	0.00	0.00
7,900.0	89.00	0.35	6,758.6	1,065.9	111.8	1,066.6	0.00	0.00	0.00
8,000.0	89.00	0.35	6,760.4	1,165.9	112.4	1,166.6	0.00	0.00	0.00
8,100.0	89.00	0.35	6,762.1	1,265.9	113.1	1,266.6	0.00	0.00	0.00
8,200.0	89.00	0.35	6,763.9	1,365.9	113.7	1,366.6	0.00	0.00	0.00
8,300.0	89.00	0.35	6,765.6	1,465.9	114.3	1,466.5	0.00	0.00	0.00
8,400.0	89.00	0.35	6,767.3	1,565.9	114.9	1,566.5	0.00	0.00	0.00
8,500.0	89.00	0.35	6,769.1	1,665.8	115.5	1,666.5	0.00	0.00	0.00
8,600.0	89.00	0.35	6,770.8	1,765.8	116.1	1,766.5	0.00	0.00	0.00
8,700.0	89.00	0.35	6,772.6	1,865.8	116.8	1,866.5	0.00	0.00	0.00
8,800.0	89.00	0.35	6,774.3	1,965.8	117.4	1,966.5	0.00	0.00	0.00
8,900.0	89.00	0.35	6,776.1	2,065.8	118.0	2,066.5	0.00	0.00	0.00
9,000.0	89.00	0.35	6,777.8	2,165.8	118.6	2,166.4	0.00	0.00	0.00
9,100.0	89.00	0.35	6,779.6	2,265.7	119.2	2,266.4	0.00	0.00	0.00
9,200.0	89.00	0.35	6,781.3	2,365.7	119.8	2,366.4	0.00	0.00	0.00
9,300.0	89.00	0.35	6,783.1	2,465.7	120.4	2,466.4	0.00	0.00	0.00
9,400.0	89.00	0.35	6,784.8	2,565.7	121.1	2,566.4	0.00	0.00	0.00
9,500.0	89.00	0.35	6,786.5	2,665.7	121.7	2,666.4	0.00	0.00	0.00
9,600.0	89.00	0.35	6,788.3	2,765.7	122.3	2,766.3	0.00	0.00	0.00
9,700.0	89.00	0.35	6,790.0	2,865.6	122.9	2,866.3	0.00	0.00	0.00
9,800.0	89.00	0.35	6,791.8	2,965.6	123.5	2,966.3	0.00	0.00	0.00
9,900.0	89.00	0.35	6,793.5	3,065.6	124.1	3,066.3	0.00	0.00	0.00
10,000.0	89.00	0.35	6,795.3	3,165.6	124.8	3,166.3	0.00	0.00	0.00
10,100.0	89.00	0.35	6,797.0	3,265.6	125.4	3,266.3	0.00	0.00	0.00
10,200.0	89.00	0.35	6,798.8	3,365.5	126.0	3,366.3	0.00	0.00	0.00
10,300.0	89.00	0.35	6,800.5	3,465.5	126.6	3,466.2	0.00	0.00	0.00
10,400.0	89.00	0.35	6,802.2	3,565.5	127.2	3,566.2	0.00	0.00	0.00
10,500.0	89.00	0.35	6,804.0	3,665.5	127.8	3,666.2	0.00	0.00	0.00
10,600.0	89.00	0.35	6,805.7	3,765.5	128.4	3,766.2	0.00	0.00	0.00
10,700.0	89.00	0.35	6,807.5	3,865.5	129.1	3,866.2	0.00	0.00	0.00
10,800.0	89.00	0.35	6,809.2	3,965.4	129.7	3,966.2	0.00	0.00	0.00
10,900.0	89.00	0.35	6,811.0	4,065.4	130.3	4,066.1	0.00	0.00	0.00
11,000.0	89.00	0.35	6,812.7	4,165.4	130.9	4,166.1	0.00	0.00	0.00
11,100.0	89.00	0.35	6,814.5	4,265.4	131.5	4,266.1	0.00	0.00	0.00
11,200.0	89.00	0.35	6,816.2	4,365.4	132.1	4,366.1	0.00	0.00	0.00
11,300.0	89.00	0.35	6,818.0	4,465.4	132.7	4,466.1	0.00	0.00	0.00
11,400.0	89.00	0.35	6,819.7	4,565.3	133.4	4,566.1	0.00	0.00	0.00

**Database:** EDM 5000.1 Single User Db  
**Company:** D90 Energy, LLC  
**Project:** Jackson County, Colorado  
**Site:** Sec 6, T6N, R80W, 6th PM  
**Well:** Damfino 0680 7-6H31  
**Wellbore:** Wellbore #1  
**Design:** Design #1

**Local Co-ordinate Reference:**  
**TVD Reference:**  
**MD Reference:**  
**North Reference:**  
**Survey Calculation Method:**

Well Damfino 0680 7-6H31  
 well @ 8243.5usft (Cyclone #33)  
 well @ 8243.5usft (Cyclone #33)  
 True  
 Minimum Curvature

## Planned Survey

Measured Depth (usft)	Inclination (°)	Azimuth (°)	Vertical Depth (usft)	+N/-S (usft)	+E/-W (usft)	Vertical Section (usft)	Dogleg Rate (°/100usft)	Build Rate (°/100usft)	Turn Rate (°/100usft)
11,500.0	89.00	0.35	6,821.4	4,665.3	134.0	4,666.1	0.00	0.00	0.00
11,600.0	89.00	0.35	6,823.2	4,765.3	134.6	4,766.0	0.00	0.00	0.00
11,700.0	89.00	0.35	6,824.9	4,865.3	135.2	4,866.0	0.00	0.00	0.00
11,800.0	89.00	0.35	6,826.7	4,965.3	135.8	4,966.0	0.00	0.00	0.00
11,900.0	89.00	0.35	6,828.4	5,065.3	136.4	5,066.0	0.00	0.00	0.00
12,000.0	89.00	0.35	6,830.2	5,165.2	137.1	5,166.0	0.00	0.00	0.00
12,100.0	89.00	0.35	6,831.9	5,265.2	137.7	5,266.0	0.00	0.00	0.00
12,200.0	89.00	0.35	6,833.7	5,365.2	138.3	5,366.0	0.00	0.00	0.00
12,300.0	89.00	0.35	6,835.4	5,465.2	138.9	5,465.9	0.00	0.00	0.00
12,400.0	89.00	0.35	6,837.2	5,565.2	139.5	5,565.9	0.00	0.00	0.00
12,500.0	89.00	0.35	6,838.9	5,665.2	140.1	5,665.9	0.00	0.00	0.00
12,600.0	89.00	0.35	6,840.6	5,765.1	140.7	5,765.9	0.00	0.00	0.00
12,700.0	89.00	0.35	6,842.4	5,865.1	141.4	5,865.9	0.00	0.00	0.00
12,800.0	89.00	0.35	6,844.1	5,965.1	142.0	5,965.9	0.00	0.00	0.00
12,900.0	89.00	0.35	6,845.9	6,065.1	142.6	6,065.8	0.00	0.00	0.00
13,000.0	89.00	0.35	6,847.6	6,165.1	143.2	6,165.8	0.00	0.00	0.00
13,100.0	89.00	0.35	6,849.4	6,265.1	143.8	6,265.8	0.00	0.00	0.00
13,200.0	89.00	0.35	6,851.1	6,365.0	144.4	6,365.8	0.00	0.00	0.00
13,300.0	89.00	0.35	6,852.9	6,465.0	145.1	6,465.8	0.00	0.00	0.00
13,400.0	89.00	0.35	6,854.6	6,565.0	145.7	6,565.8	0.00	0.00	0.00
13,500.0	89.00	0.35	6,856.4	6,665.0	146.3	6,665.8	0.00	0.00	0.00
13,600.0	89.00	0.35	6,858.1	6,765.0	146.9	6,765.7	0.00	0.00	0.00
13,700.0	89.00	0.35	6,859.8	6,864.9	147.5	6,865.7	0.00	0.00	0.00
13,800.0	89.00	0.35	6,861.6	6,964.9	148.1	6,965.7	0.00	0.00	0.00
13,900.0	89.00	0.35	6,863.3	7,064.9	148.7	7,065.7	0.00	0.00	0.00
14,000.0	89.00	0.35	6,865.1	7,164.9	149.4	7,165.7	0.00	0.00	0.00
14,100.0	89.00	0.35	6,866.8	7,264.9	150.0	7,265.7	0.00	0.00	0.00
14,200.0	89.00	0.35	6,868.6	7,364.9	150.6	7,365.6	0.00	0.00	0.00
14,300.0	89.00	0.35	6,870.3	7,464.8	151.2	7,465.6	0.00	0.00	0.00
14,400.0	89.00	0.35	6,872.1	7,564.8	151.8	7,565.6	0.00	0.00	0.00
14,500.0	89.00	0.35	6,873.8	7,664.8	152.4	7,665.6	0.00	0.00	0.00
14,600.0	89.00	0.35	6,875.5	7,764.8	153.0	7,765.6	0.00	0.00	0.00
14,700.0	89.00	0.35	6,877.3	7,864.8	153.7	7,865.6	0.00	0.00	0.00
14,800.0	89.00	0.35	6,879.0	7,964.8	154.3	7,965.6	0.00	0.00	0.00
14,900.0	89.00	0.35	6,880.8	8,064.7	154.9	8,065.5	0.00	0.00	0.00
15,000.0	89.00	0.35	6,882.5	8,164.7	155.5	8,165.5	0.00	0.00	0.00
15,100.0	89.00	0.35	6,884.3	8,264.7	156.1	8,265.5	0.00	0.00	0.00
15,200.0	89.00	0.35	6,886.0	8,364.7	156.7	8,365.5	0.00	0.00	0.00
15,300.0	89.00	0.35	6,887.8	8,464.7	157.4	8,465.5	0.00	0.00	0.00
15,400.0	89.00	0.35	6,889.5	8,564.7	158.0	8,565.5	0.00	0.00	0.00
15,500.0	89.00	0.35	6,891.3	8,664.6	158.6	8,665.4	0.00	0.00	0.00
15,600.0	89.00	0.35	6,893.0	8,764.6	159.2	8,765.4	0.00	0.00	0.00
15,700.0	89.00	0.35	6,894.7	8,864.6	159.8	8,865.4	0.00	0.00	0.00
15,800.0	89.00	0.35	6,896.5	8,964.6	160.4	8,965.4	0.00	0.00	0.00
15,900.0	89.00	0.35	6,898.2	9,064.6	161.0	9,065.4	0.00	0.00	0.00
16,000.0	89.00	0.35	6,900.0	9,164.6	161.7	9,165.4	0.00	0.00	0.00
16,100.0	89.00	0.35	6,901.7	9,264.5	162.3	9,265.4	0.00	0.00	0.00
16,200.0	89.00	0.35	6,903.5	9,364.5	162.9	9,365.3	0.00	0.00	0.00
16,300.0	89.00	0.35	6,905.2	9,464.5	163.5	9,465.3	0.00	0.00	0.00
16,400.0	89.00	0.35	6,907.0	9,564.5	164.1	9,565.3	0.00	0.00	0.00
16,500.0	89.00	0.35	6,908.7	9,664.5	164.7	9,665.3	0.00	0.00	0.00
16,600.0	89.00	0.35	6,910.5	9,764.5	165.4	9,765.3	0.00	0.00	0.00
16,700.0	89.00	0.35	6,912.2	9,864.4	166.0	9,865.3	0.00	0.00	0.00
16,800.0	89.00	0.35	6,913.9	9,964.4	166.6	9,965.3	0.00	0.00	0.00





<b>Database:</b>	EDM 5000.1 Single User Db	<b>Local Co-ordinate Reference:</b>	Well Damfino 0680 7-6H31
<b>Company:</b>	D90 Energy, LLC	<b>TVD Reference:</b>	well @ 8243.5usft (Cyclone #33)
<b>Project:</b>	Jackson County, Colorado	<b>MD Reference:</b>	well @ 8243.5usft (Cyclone #33)
<b>Site:</b>	Sec 6, T6N, R80W, 6th PM	<b>North Reference:</b>	True
<b>Well:</b>	Damfino 0680 7-6H31	<b>Survey Calculation Method:</b>	Minimum Curvature
<b>Wellbore:</b>	Wellbore #1		
<b>Design:</b>	Design #1		

Planned Survey									
Measured Depth (usft)	Inclination (°)	Azimuth (°)	Vertical Depth (usft)	+N/-S (usft)	+E/-W (usft)	Vertical Section (usft)	Dogleg Rate (°/100usft)	Build Rate (°/100usft)	Turn Rate (°/100usft)
16,900.0	89.00	0.35	6,915.7	10,064.4	167.2	10,065.2	0.00	0.00	0.00
17,000.0	89.00	0.35	6,917.4	10,164.4	167.8	10,165.2	0.00	0.00	0.00
TD @ 17064.6' MD / 6918.6' TVD									
17,064.6	89.00	0.35	6,918.6	10,229.0	168.2	10,229.8	0.00	0.00	0.00

Design Targets									
Target Name	Dip Angle (°)	Dip Dir. (°)	TVD (usft)	+N/-S (usft)	+E/-W (usft)	Northing (usft)	Easting (usft)	Latitude	Longitude
- hit/miss target									
- Shape									
TOC - Damfino 0680 ;	0.00	0.00	6,360.6	-232.1	103.8	1,430,724.29	2,745,059.67	40.512121	-106.416904
- plan hits target center									
- Point									
PBHL - Damfino 0680	0.00	0.00	6,918.6	10,229.0	168.2	1,441,184.13	2,745,232.24	40.540836	-106.416672
- plan hits target center									
- Point									

Formations						
Measured Depth (usft)	Vertical Depth (usft)	Name	Lithology	Dip (°)	Dip Direction (°)	
2,257.0	2,236.7	LNCE		1.00	0.35	
3,189.2	3,166.0	FXHLS		1.00	0.35	
3,519.2	3,496.0	PIRR		1.00	0.35	
4,489.2	4,466.0	SSSX		1.00	0.35	
5,069.2	5,046.0	SNNN		1.00	0.35	
5,259.2	5,236.0	PIRRL		1.00	0.35	
6,239.2	6,216.0	MNCS		1.00	0.35	
6,566.8	6,536.7	NBRR		1.00	0.35	

Plan Annotations					
Measured Depth (usft)	Vertical Depth (usft)	Local Coordinates			
		+N/-S (usft)	+E/-W (usft)	Comment	
1,000.0	1,000.0	0.0	0.0	KOP (Build 2° / 100')	
1,641.4	1,636.1	-65.3	29.2	EOB @ 12.83° Inc. / 155.89° Azm	
2,142.4	2,124.5	-166.8	74.6	Drop 2° / 100'	
2,783.8	2,760.6	-232.1	103.8	EOD @ Vertical	
6,383.8	6,360.6	-232.1	103.8	Build 15° / 100'	
6,977.1	6,742.5	143.2	106.2	EOB @ 89.00° Inc. / 0.35° Azm	
17,064.6	6,918.6	10,229.0	168.2	TD @ 17064.6' MD / 6918.6' TVD	