

Foundation Energy Management LLC, Bolin 1-8
125-06255
Inspection #688312415
3/28/2022
Routine Field Inspection



FOUNDATION
ENERGY MANAGEMENT, LLC
BLACH 22-8

SENE Sec 8-T1N-R46W
Rd. 36 & R. 1 Mile South, W. into
Yuma County, CO

Est. Date of Commencement: 10-24-11

FOUNDATION 24HR EMERGENCY #: 1-866-757-3650
IN CASE OF EMERGENCY CALL: 911
CO OPR 10-12

FOUNDATION
ENERGY MANAGEMENT, LLC
BLACH 21-8B

NE 1/4 Sec 8-T1N-R46W
Rd. 36 & R. 1 Mile South, W. into
Yuma County, CO

Est. Date of Commencement: 10-24-11

FOUNDATION 24HR EMERGENCY #: 1-866-757-3650
IN CASE OF EMERGENCY CALL: 911
CO OPR 10-12

FOUNDATION
ENERGY MANAGEMENT, LLC

BOLIN 1-8

SENE Sec. 8-T1N-R46W
1/2 Mile South of Rd. 35 & R
Yuma County, CO

FOUNDATION 24HR EMERGENCY #: 1-866-757-3650
IN CASE OF EMERGENCY CALL: 911
CO OPR 10-12

Colorado Oil and Gas Conservation Commission

40.07911, -102.53004, 3884.5ft, 245°

03/28/2022 03:11:13 PM

FOUNDATION

ENERGY MANAGEMENT, LLC

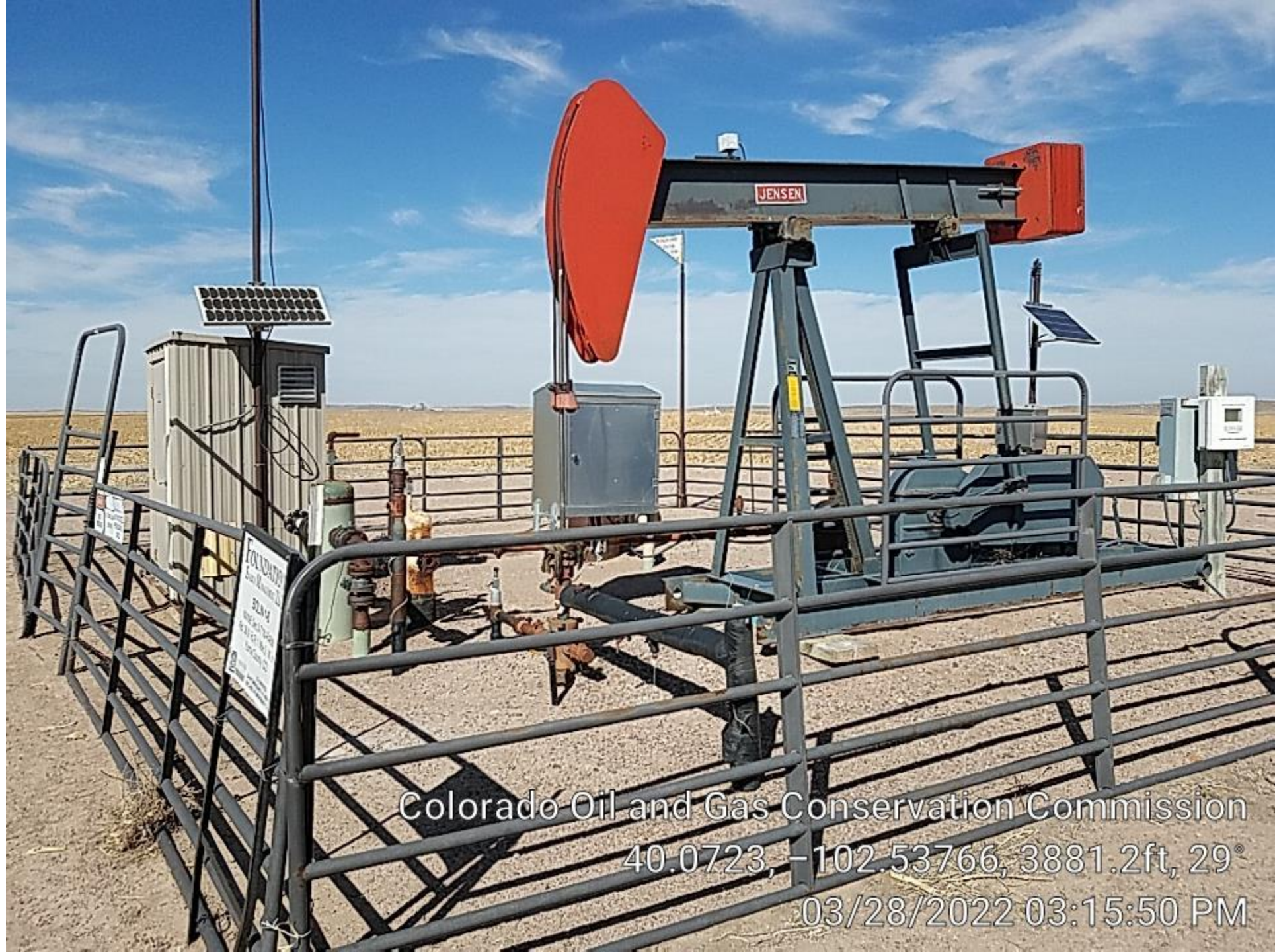
BOLIN 1-8

NWNE Sec.8-T1N-R46W
Rd. 36 & Rd R, 1 Mile S., W. into
Yuma County, CO



CO OP#10122
24-HR EMERGENCY #: 1-866-767-3600
IN CASE OF EMERGENCY CALL: 911

Colorado Oil and Gas Conservation Commission
40.0723, -102.53769, 3887.8ft, 57
03/28/2022 03:15:12 PM



Colorado Oil and Gas Conservation Commission
40.0723, -102.53766, 3881.2ft, 29°
03/28/2022 03:15:50 PM



Colorado Oil and Gas Conservation Commission
40.07229 -102.53767 3884.5ft 60"
03/28/2022 03:15:26 PM



Colorado Oil and Gas Conservation Commission

40.07233, -102.53765, 3894.4ft, 149°

03/28/2022 03:17:02 PM



Colorado Oil and Gas Conservation Commission
40.0723, -102.53766, 3881.2ft, 5°
03/28/2022 03:15:35 PM



Colorado Oil and Gas Conservation Commission
40-07234, -102.53766, 3881.2ft, 124°
03/28/2022 03:16:49 PM



Colorado Oil and Gas Conservation Commission
40.07233, -102.53765, 3897.6ft, 215°
03/28/2022 03:17:19 PM

Colorado Oil and Gas Conservation Commission
40.07233, -102.53765, 3897.6ft, 216°
03/28/2022 03:17:28 PM



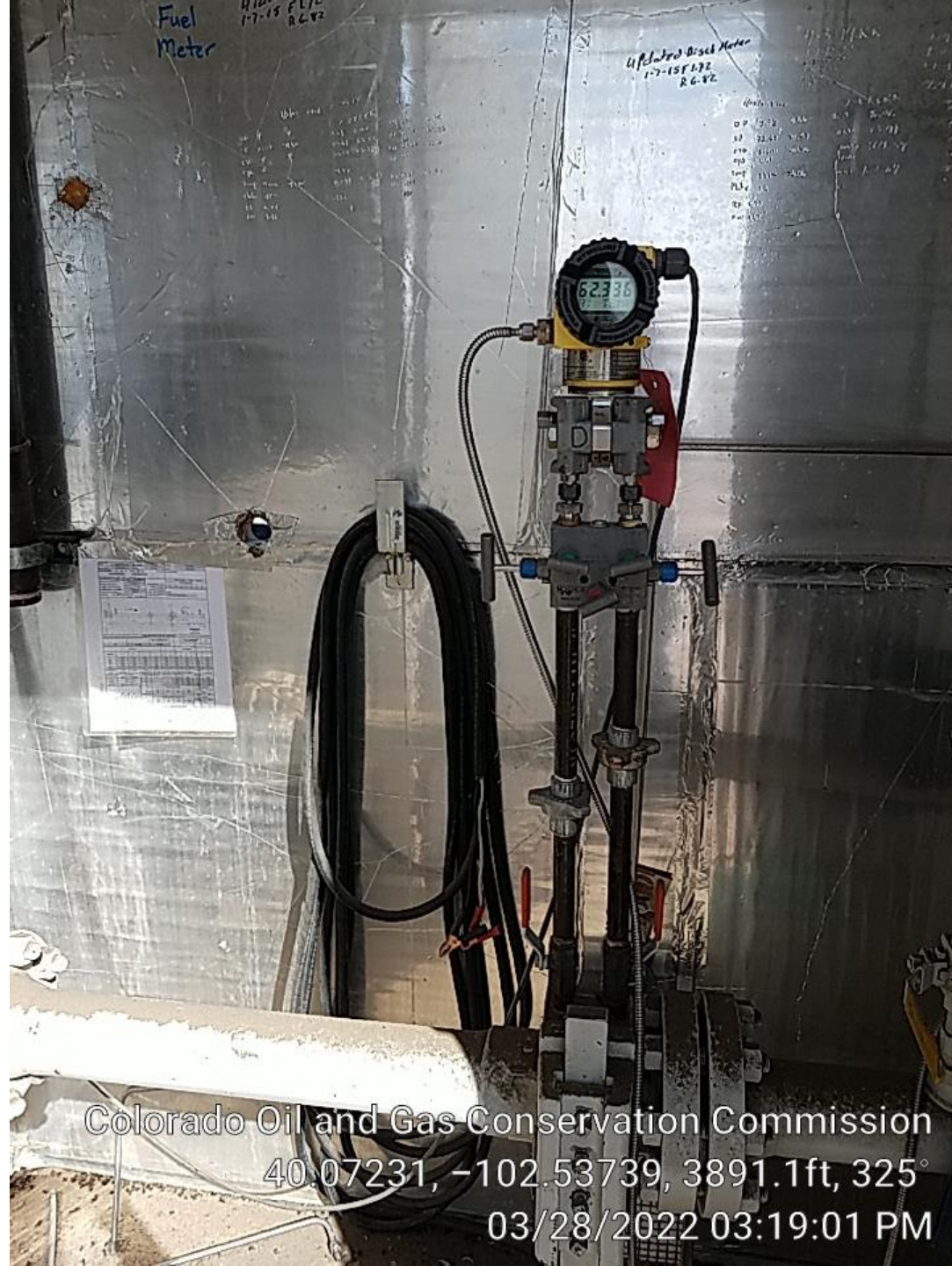
Colorado Oil and Gas Conservation Commission
40.0723, -102.53766, 3881.2ft, 85°
03/28/2022 03:16:00 PM



Colorado Oil and Gas Conservation Commission
40.07232, -102.53763, 3894.4ft, 95
03/28/2022 03:18:23 PM



Colorado Oil and Gas Conservation Commission
40.07232, -102.53744, 3887.8ft, 87°
03/28/2022 03:18:40 PM



Colorado Oil and Gas Conservation Commission
40.07231, -102.53739, 3891.1ft, 325°
03/28/2022 03:19:01 PM



Colorado Oil and Gas Conservation Commission
40.07231, -102.53739, 3887.8ft, 307°
03/28/2022 03:19:18 PM



Colorado Oil and Gas Conservation Commission

40.0723, -102.53766, 3881.2ft, 138°

03/28/2022 03:16:08 PM