

Foundation Energy Management LLC, Pletcher 1-9  
125-07120  
Inspection #688312409  
4/28/2022  
Routine Field Inspection



Colorado Oil and Gas Conservation Commission  
40.07553, -102.52976, 3907.5ft, 131  
03/28/2022 02:05:23 PM





Colorado Oil and Gas Conservation Commission  
40.07507, -102.52891, 3608.9ft, 132°  
03/28/2022 02:02:07 PM





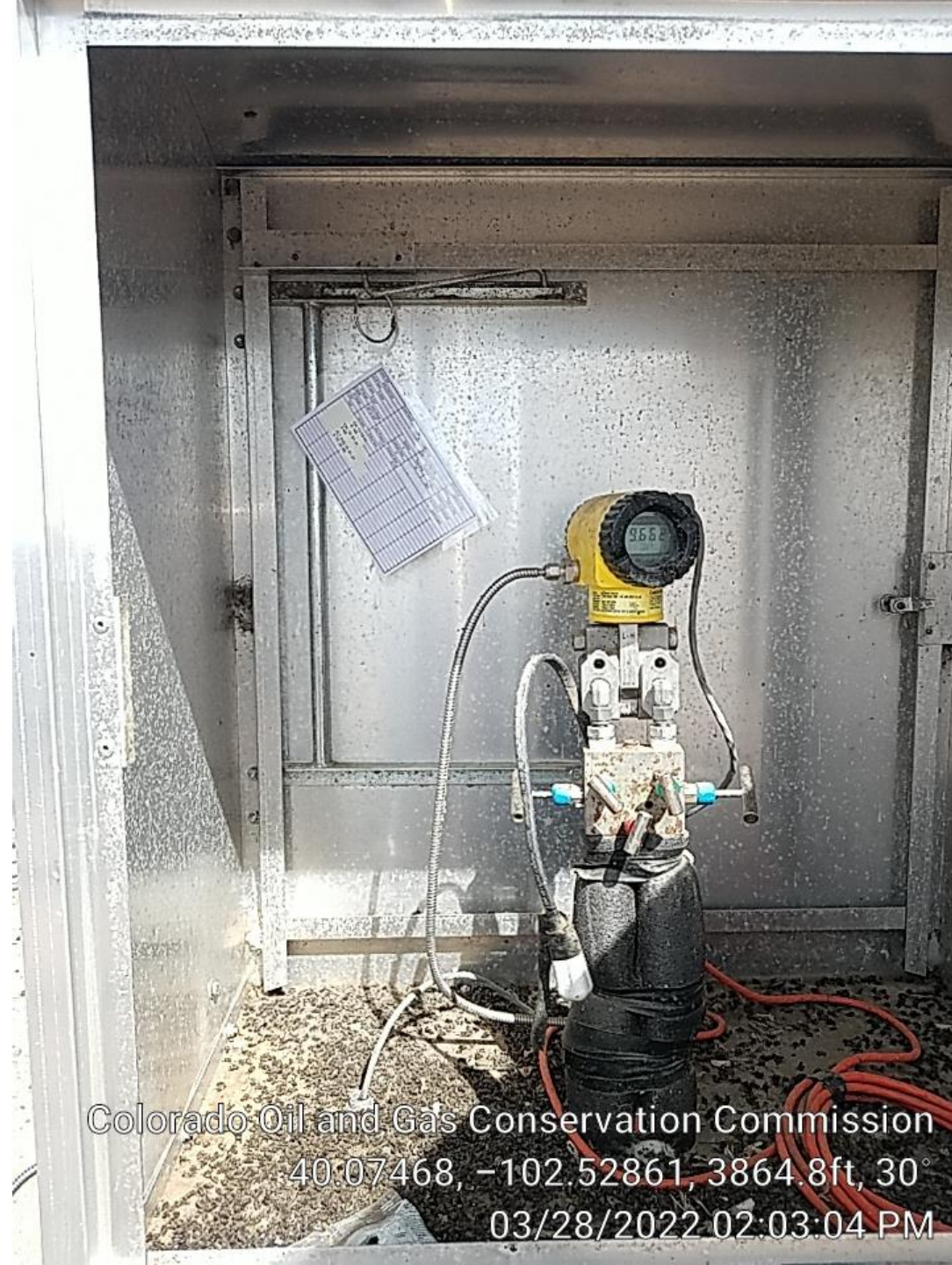
Colorado Oil and Gas Conservation Commission  
40.07485, -102.52868, 3802.5ft, 150°  
03/28/2022 02:02:21 PM





Colorado Oil and Gas Conservation Commission  
40.07468, -102.52862, 3861.5ft, 76°  
03/28/2022 02:02:50 PM





Colorado Oil and Gas Conservation Commission  
40:07468, -102.52861, 3864.8ft, 30°  
03/28/2022 02:03:04 PM

Colorado Oil and Gas Conservation Commission  
40.07467, -102.52859, 3868.1ft, 26°  
03/28/2022 02:03:18 PM