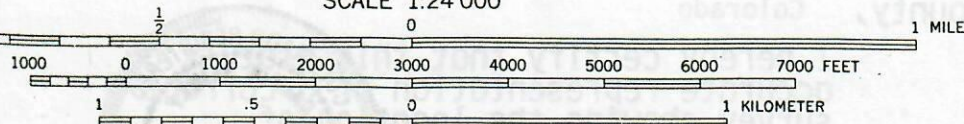




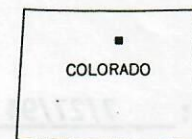
00061546



SCALE 1:24 000



CONTOUR INTERVAL 10 FEET
NATIONAL GEODETIC VERTICAL DATUM OF 1929



QUADRANGLE LOCATION

THIS MAP COMPLIES WITH NATIONAL MAP ACCURACY STANDARDS
E BY U. S. GEOLOGICAL SURVEY, DENVER, COLORADO 80225, OR RESTON, VIRGINIA 22092
A FOLDER DESCRIBING TOPOGRAPHIC MAPS AND SYMBOLS IS AVAILABLE ON REQUEST

To place on the predicted North American Datum 1983
move the projection lines 5 meters north and

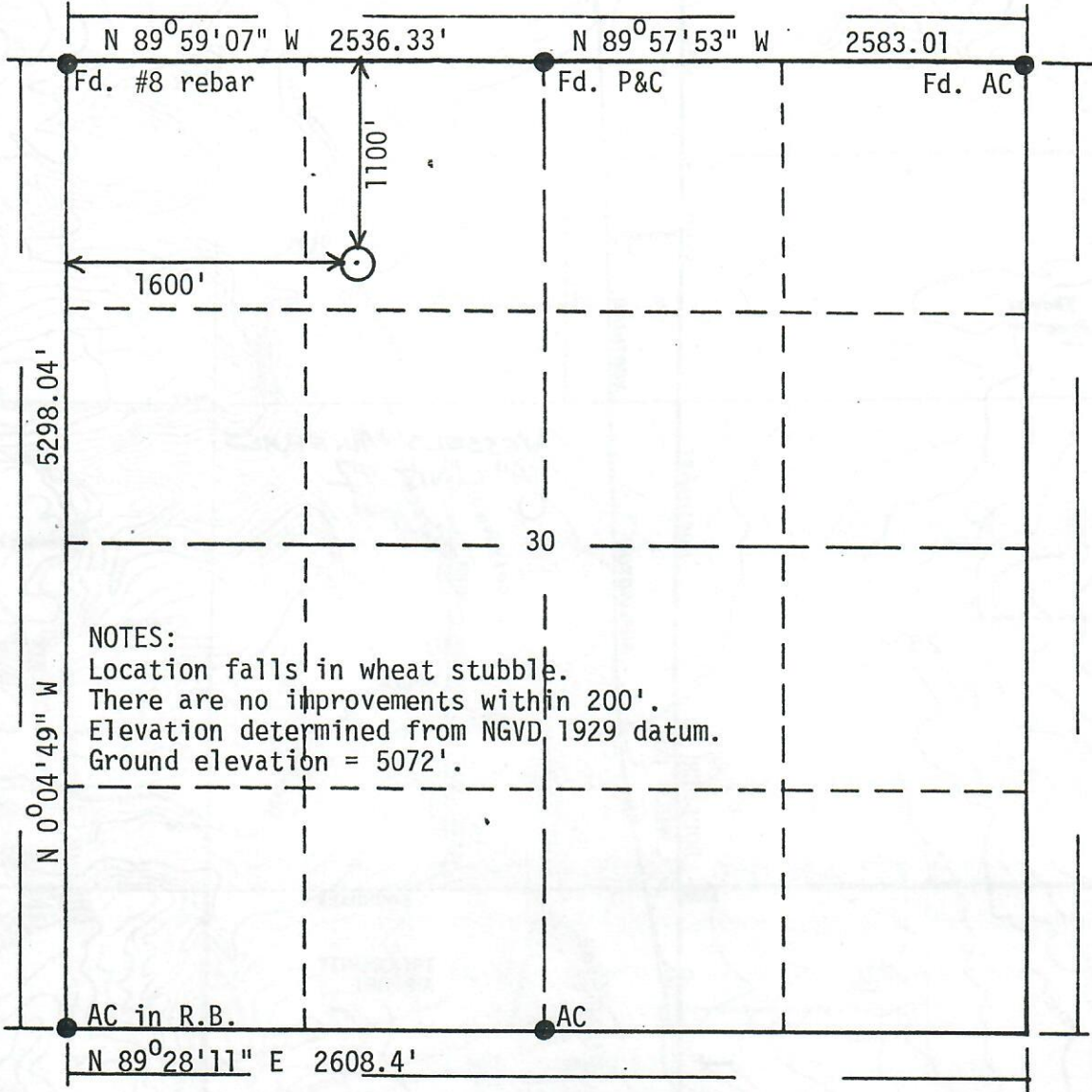
POWERS ELEVATION CO., INC.
P.O. Box 440889
Aurora, CO 80044-0889
(303) 321-2217
FAX (303) 321-2218

ALL POWERS ELEVATION CO., INC.
elevations originate from
accepted U.S. Benchmarks

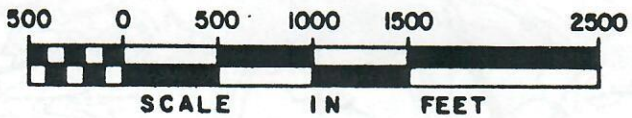
R. 68 W



BASIS OF BEARING: West line of section assumed north-south.



NOTES:
Location falls in wheat stubble.
There are no improvements within 200'.
Elevation determined from NGVD, 1929 datum.
Ground elevation = 5072'.



Powers Elevation Co., Inc. of Denver, Colorado has in accordance
with a request from Andy Boden for Vessels Gas Processing
determined the location of Vessels Minerals "A" Unit #2
to be 1100' FN & 1600' FW Section 30 , Township 1 North
Range 68 West of the Sixth Principal Meridian,
Weld County, Colorado

I hereby certify that this plot is an
accurate representation of a correct
survey showing the location of
Vessels Minerals "A" Unit #2

Date: 7/27/94

Calvin Henry

Licensed Land Surveyor No. 23501
State of Colorado

