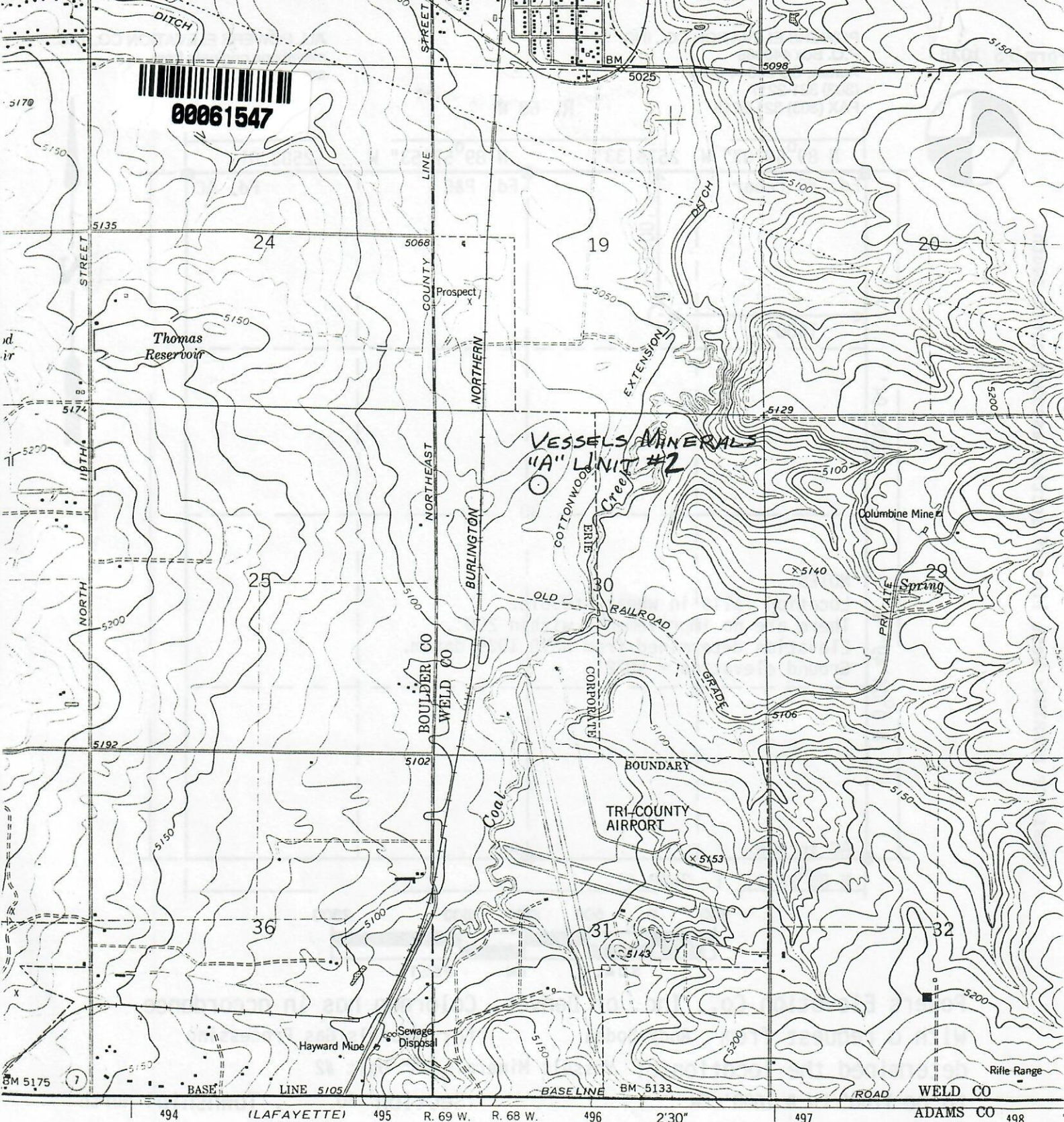
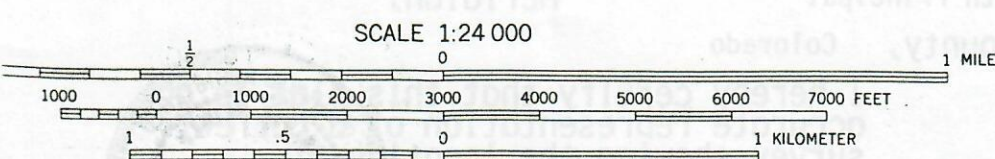


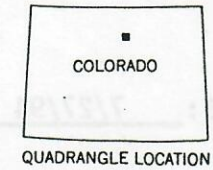
00061547



VESSELS MINERALS  
"A" UNIT #2



CONTOUR INTERVAL 10 FEET  
NATIONAL GEODETIC VERTICAL DATUM OF 1929



THIS MAP COMPLIES WITH NATIONAL MAP ACCURACY STANDARDS  
BY U. S. GEOLOGICAL SURVEY, DENVER, COLORADO 80225, OR RESTON, VIRGINIA 22092  
A FOLDER DESCRIBING TOPOGRAPHIC MAPS AND SYMBOLS IS AVAILABLE ON REQUEST

To place on the predicted North American Datum 1983  
move the projection lines 5 meters north and



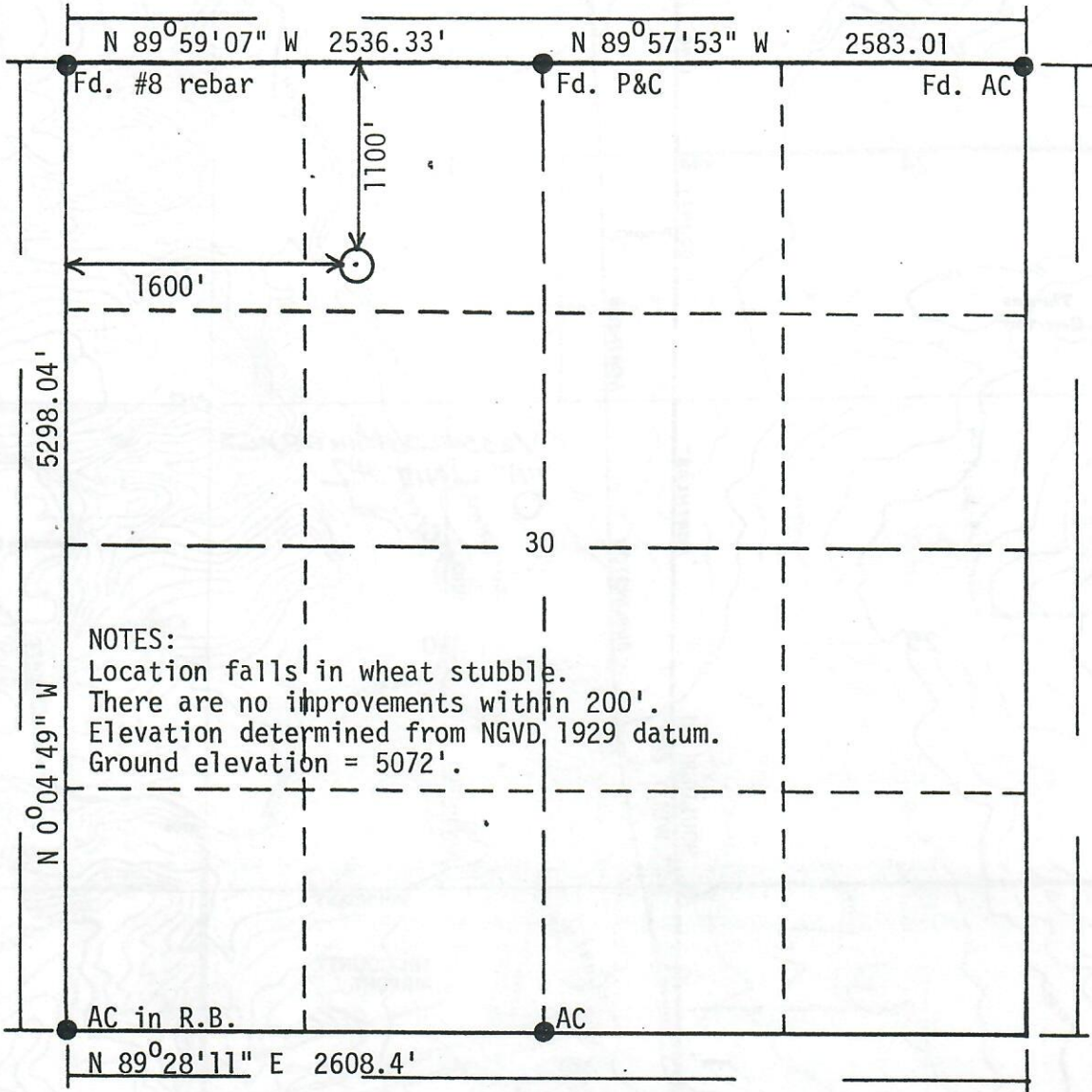
POWERS ELEVATION CO., INC.  
P.O. Box 440889  
Aurora, CO 80044-0889  
(303) 321-2217  
FAX (303) 321-2218

ALL POWERS ELEVATION CO., INC.  
elevations originate from  
accepted U.S. Benchmarks

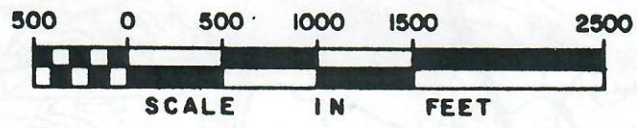
R. 68 W



BASIS OF BEARING: West line of section assumed north-south.



NOTES:  
 Location falls in wheat stubble.  
 There are no improvements within 200'.  
 Elevation determined from NGVD, 1929 datum.  
 Ground elevation = 5072'.



Powers Elevation Co., Inc. of Denver, Colorado has in accordance with a request from Andy Boden for Vessels Gas Processing determined the location of Vessels Minerals "A" Unit #2 to be 1100' FN & 1600' FW Section 30, Township 1 North Range 68 West of the Sixth Principal Meridian, Weld County, Colorado

I hereby certify that this plat is an accurate representation of a correct survey showing the location of Vessels Minerals "A" Unit #2

Date: 7/27/94

*Calvin Henry*

Licensed Land Surveyor No. 23501  
State of Colorado

