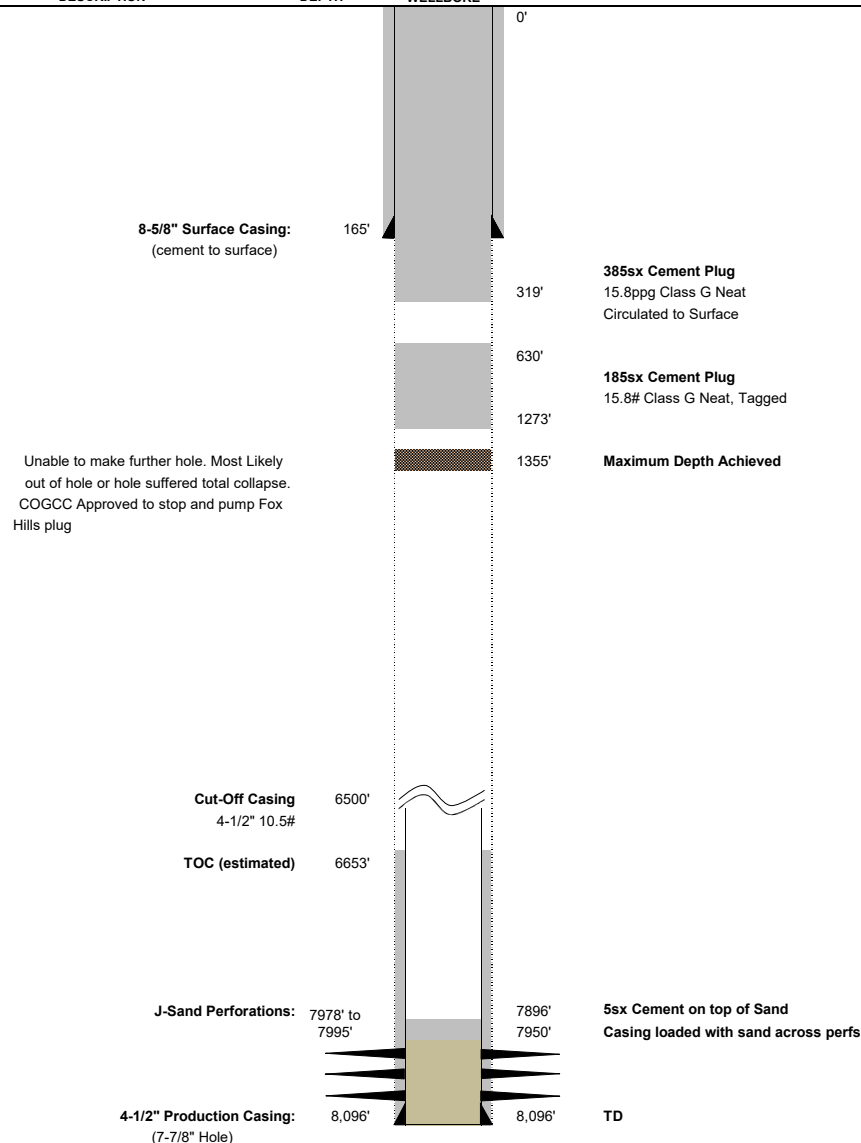


Mile-Hi Duck Club- Tracy #1 Subsequent WBD



DESCRIPTION DEPTH WELLBORE



WELL: Mile-Hi Duck Club- Tracy #1

LOCATION: NENE 12 1S 65W
990FNL 990 FEL (Planned)
39.984170°N, -104.718106°E

FORMATION: JSND 6/13/1975

API #: 05-001-06996

Field: Wattenberg

CURRENT STATUS: PA

Spud: 3/18/1975

Casing and Tubular Data

| Type | Size | Weight | Top | Bottom | Hole Size |
|----------------|--------|----------|-----|--------|-----------|
| Surface | 8-5/8" | 24 ppf | 0 | 165' | 12-1/4" |
| Top Production | 4-1/2" | 10.5 ppf | 0 | 8,096' | 7-7/8" |

Elevation Data

| | | |
|------------|------|------|
| GL | 5029 | feet |
| KB | 5039 | feet |
| Difference | 10 | feet |

Formation Tops Data

| Formation | Depth | |
|----------------------|-------|----|
| Base of Fox Hills | 1206' | MD |
| Base of Upper Pierre | 1600' | MD |
| Sussex | 4740' | MD |
| Niobrara | 7066' | MD |
| Carlile | 7525' | MD |
| D Sand | 7906' | MD |
| J Sand | 7949' | MD |