

Foundation Energy Management LLC, State 247 11-36
125-07837

Inspection #688312380

3/25/2022

Routine Field Inspection



COLORADO
Oil & Gas Conservation
Commission

Department of Natural Resources



FOUNDATION
ENERGY MANAGEMENT, LLC
RMR RANCH 13-36
NW1/4 Sec. 36 T2N-R47W
1/4 S & 1/4 Mile South on trail, W. into
Yuma County, CO
24-HR EMERGENCY # 1-866-757-3630
IN CASE OF EMERGENCY CALL 911
CO OPS#10112

FOUNDATION
ENERGY MANAGEMENT, LLC
RMR RANCH 14-36
SWSW Sec. 36 T2N-R47W
Rd N & 37, 1/4 Mile South on trail, W. into
Yuma County, CO
24-HR EMERGENCY # 1-866-757-3630
IN CASE OF EMERGENCY CALL 911
CO OPS#10112

FOUNDATION
ENERGY MANAGEMENT, LLC
NELSON 41-36B
NENE Sec. 36 T2N-R47W
Rd N & 37, Follow trail road East around North
Edge of Corral 1/4 Mile South into
Yuma County, CO
24-HR EMERGENCY # 1-866-757-3630
IN CASE OF EMERGENCY CALL 911
CO OPS#10112

FOUNDATION
ENERGY MANAGEMENT, LLC
BEAUPREZ 1-35
SENE Sec. 35 T1N R47W
Co. Rd. 37 & N.
1/4 Mile S & SW, 1/8 West into
Yuma County, CO
24-HR EMERGENCY # 1-866-757-3630
IN CASE OF EMERGENCY CALL 911
CO OPS#10112

FOUNDATION
ENERGY MANAGEMENT, LLC
**STATE 247
WELLS**
24-HR EMERGENCY # 1-866-757-3630
IN CASE OF EMERGENCY CALL 911
CO OPS#10112

Colorado Oil and Gas Conservation Commission
40.10443, -102.58667, 3950.1ft, 214°
03/25/2022 11:00:30 AM

FOUNDATION ENERGY

STATE 247 No. 11-36

NW NW SEC. 36-2N-47W

ROAD 37 AND N

YUMA COUNTY, CO

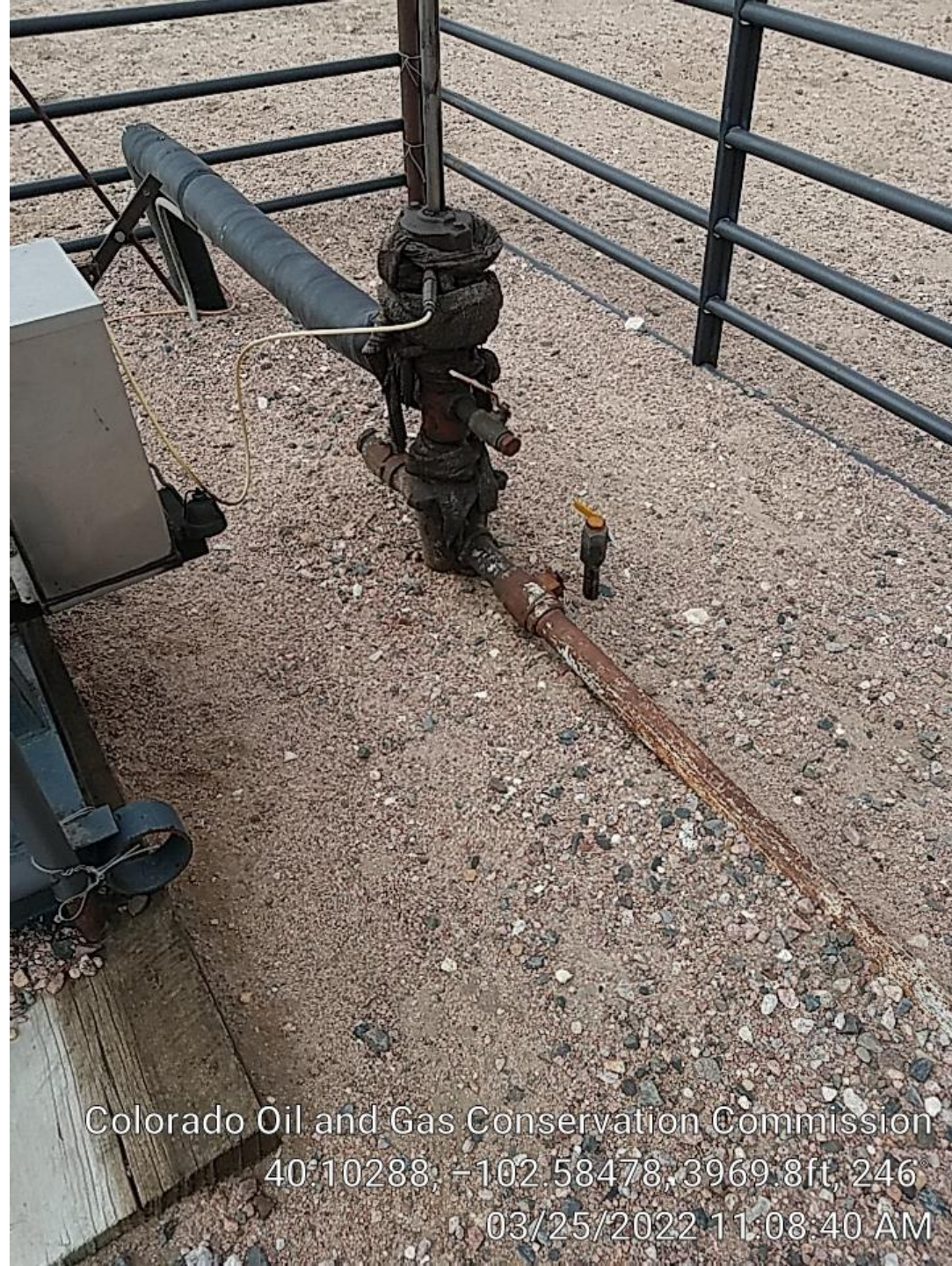


24-HR EMERGENCY #: 1-866-767-3600
IN CASE OF EMERGENCY CALL: 911
CO OP#10112

Colorado Oil and Gas Conservation Commission
40.10294, -102.58471, 3963.3ft, 250°
03/25/2022 11:07:39 AM



Colorado Oil and Gas Conservation Commission
40.10294, -102.58468, 3969.8ft, 250°
03/25/2022 11:08:03 AM



Colorado Oil and Gas Conservation Commission
40:10288, -102.58478, 3969.8ft, 246
03/25/2022 11:08:40 AM



Colorado Oil and Gas Conservation Commission
40.10289, -102.58476, 3966.5ft, 99°
03/25/2022 11:09:04 AM



Colorado Oil and Gas Conservation Commission
40.10293, -102.58473, 3973.1ft, 107°
03/25/2022 11:07:48 AM