

Serial Number: FW1304-53
 Tool Model: Probe275
 Performed: (Not Performed)

Calibrator Value: 1.0 GAPI

Background Reading: 0.0 cps
 Calibrator Reading: 1.0 cps

Sensitivity: 1.0000 GAPI/cps

Temperature Calibration Report

Serial Number: FW1304-53
 Tool Model: Probe275
 Performed: Sun Jan 05 18:47:35 2020

	Reference	Reading
Low Reference:	100.00 degF	6258.73
High Reference:	350.00 degF	26472.00
Gain:	0.01	
Offset:	22.59	
Delta Spacing	2	

Segmented Cement Bond Log Calibration Report

Serial Number: FW1905-150
 Tool Model: RBTC3

Calibration Casing Diameter: 4.500 in
 Calibration Depth: 2144.783 ft

Master Calibration, performed Fri Dec 10 12:04:04 2021:

	Raw (v)		Calibrated (mv)		Results	
	Zero	Cal	Zero	Cal	Gain	Offset
3'	-0.001	0.571	1.000	81.196	140.389	1.096
CAL	0.002	0.790				
5'	0.000	0.472	1.000	81.196	169.785	0.975
SUM						
S1	-0.006	0.560	0.000	81.000	143.316	0.791
S2	0.000	0.558	0.000	81.000	145.261	-0.014
S3	0.000	0.561	0.000	81.000	144.376	-0.035
S4	0.000	0.556	0.000	81.000	145.740	-0.021
S5	0.000	0.576	0.000	81.000	140.720	-0.034
S6	0.000	0.589	0.000	81.000	137.507	-0.020
S7	0.000	0.591	0.000	81.000	137.098	-0.027
S8	0.000	0.580	0.000	81.000	139.745	-0.041

Internal Reference Calibration, performed (Not Performed):

	Raw (v)		Calibrated (v)		Results	
	Zero	Cal	Zero	Cal	Gain	Offset
CAL	0.000	0.000	0.002	0.790	1.000	0.000

Air Zero Calibration, performed Fri Oct 01 08:17:16 2021:

	Raw (v)	Calibrated (v)	Results
--	---------	----------------	---------

	Zero	Zero	Offset
3'	0.000	0.000	0.000
5'	0.000	0.000	0.000
SUM			
S1	0.000	0.000	0.000
S2	0.000	0.000	0.000
S3	0.000	0.000	0.000
S4	0.000	0.000	0.000
S5	0.000	0.000	0.000
S6	0.000	0.000	0.000
S7	0.000	0.000	0.000
S8	0.000	0.000	0.000

Sensor	Offset (ft)	Schematic	Description	Length (ft)	O.D. (in)	Weight (lb)
ErrCt	15.39		Cable_Head-Standard Standard Cable Head	1.00	1.69	1.00
			RBT-RBTC3 (FW1905-150)	9.62	2.75	90.00
WVFS8	9.02					
WVFS7	9.02					
WVFS6	9.02					
WVFS5	9.02					
WVFS4	9.02					
WVFS3	9.02					
WVFS2	9.02					
WVFS1	9.02					
WVFCAL	9.02					
WVF3FT	9.02					
WVF5FT	8.02					
WVFSYNC	4.77					
DCCL	3.92					
CCL	3.92					
TEMP	3.17					
CP	0.40					

GR

2.42

GCI-Probe275 (FW1304-53)
Probe 2 3/4" Gamma Ray CCL w/Temperature

4.77

2.75

40.00

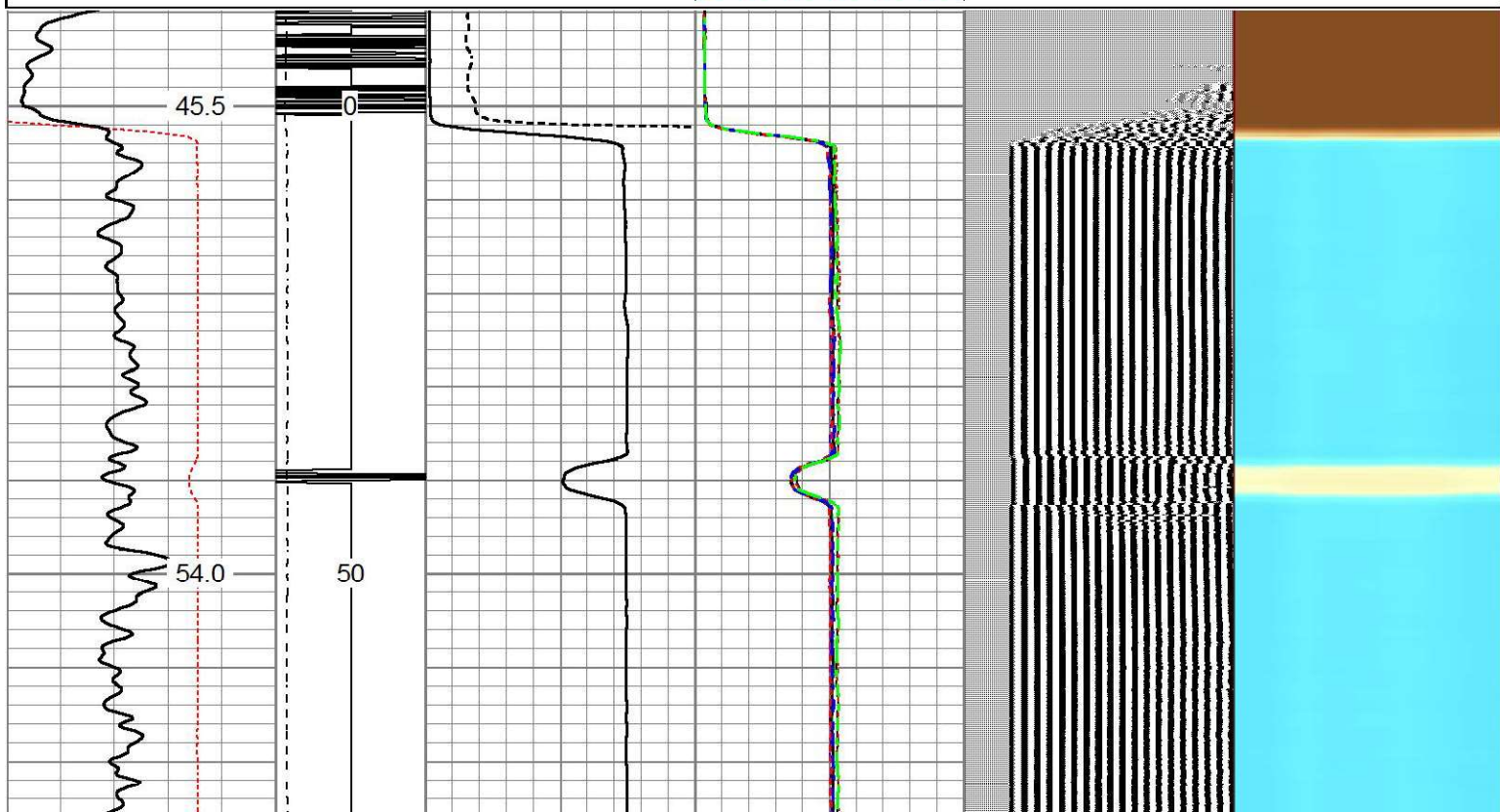
Dataset: 05-123-15027_hsr-rewank4-7a_oxy.db: field/well/run1/pass10
 Total length: 15.39 ft
 Total weight: 131.00 lb
 O.D.: 2.75 in

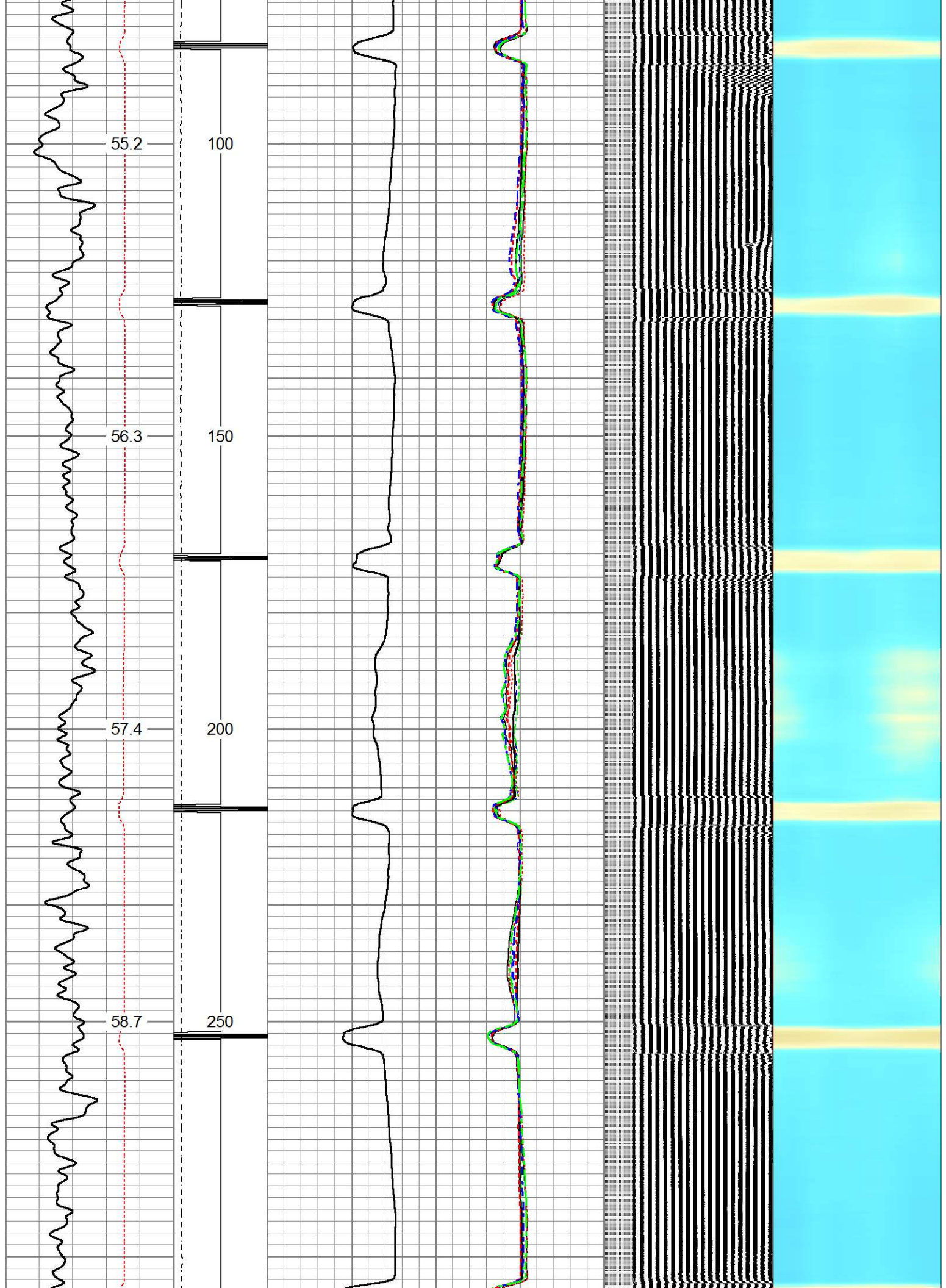


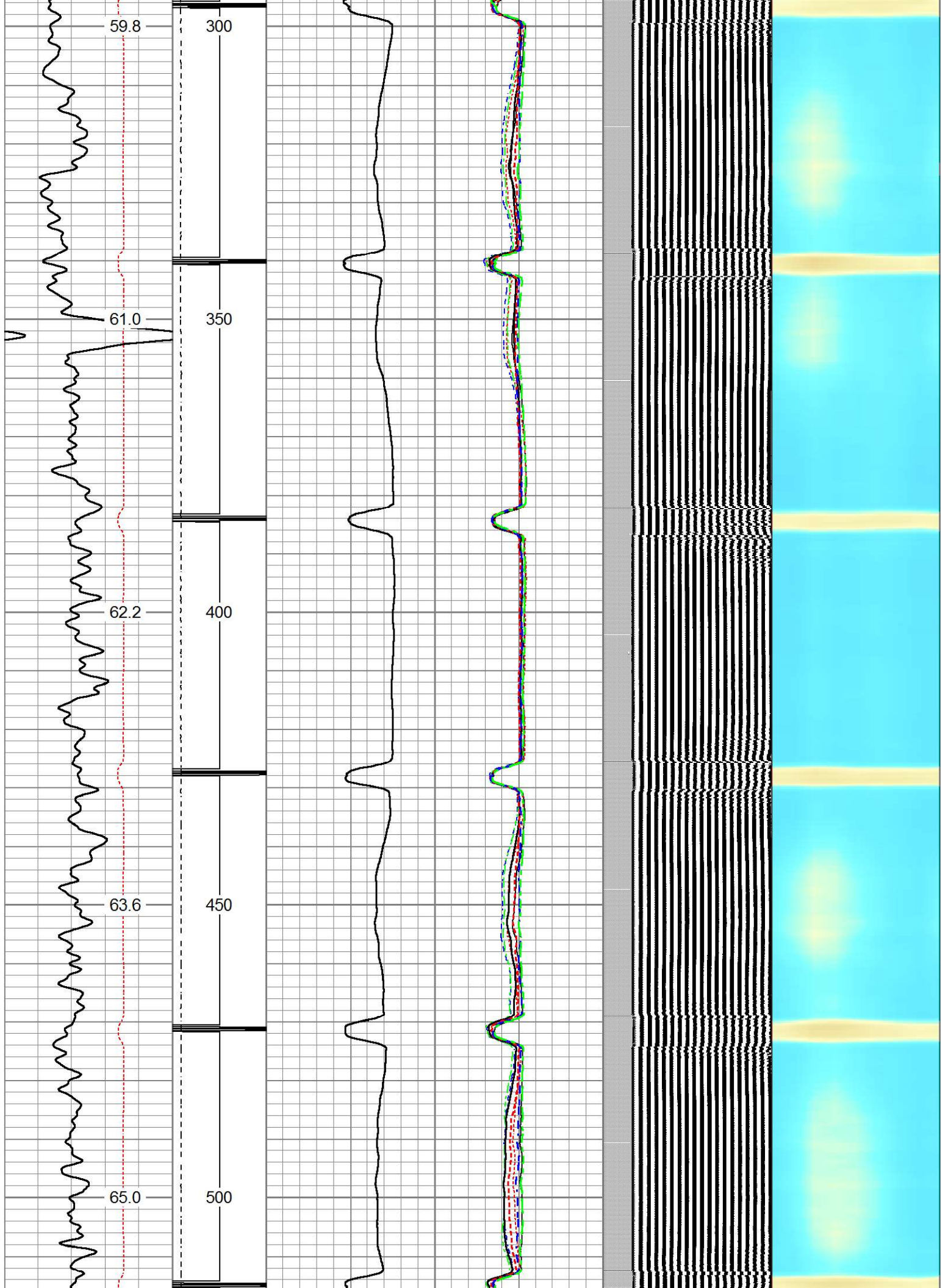
MAIN PASS

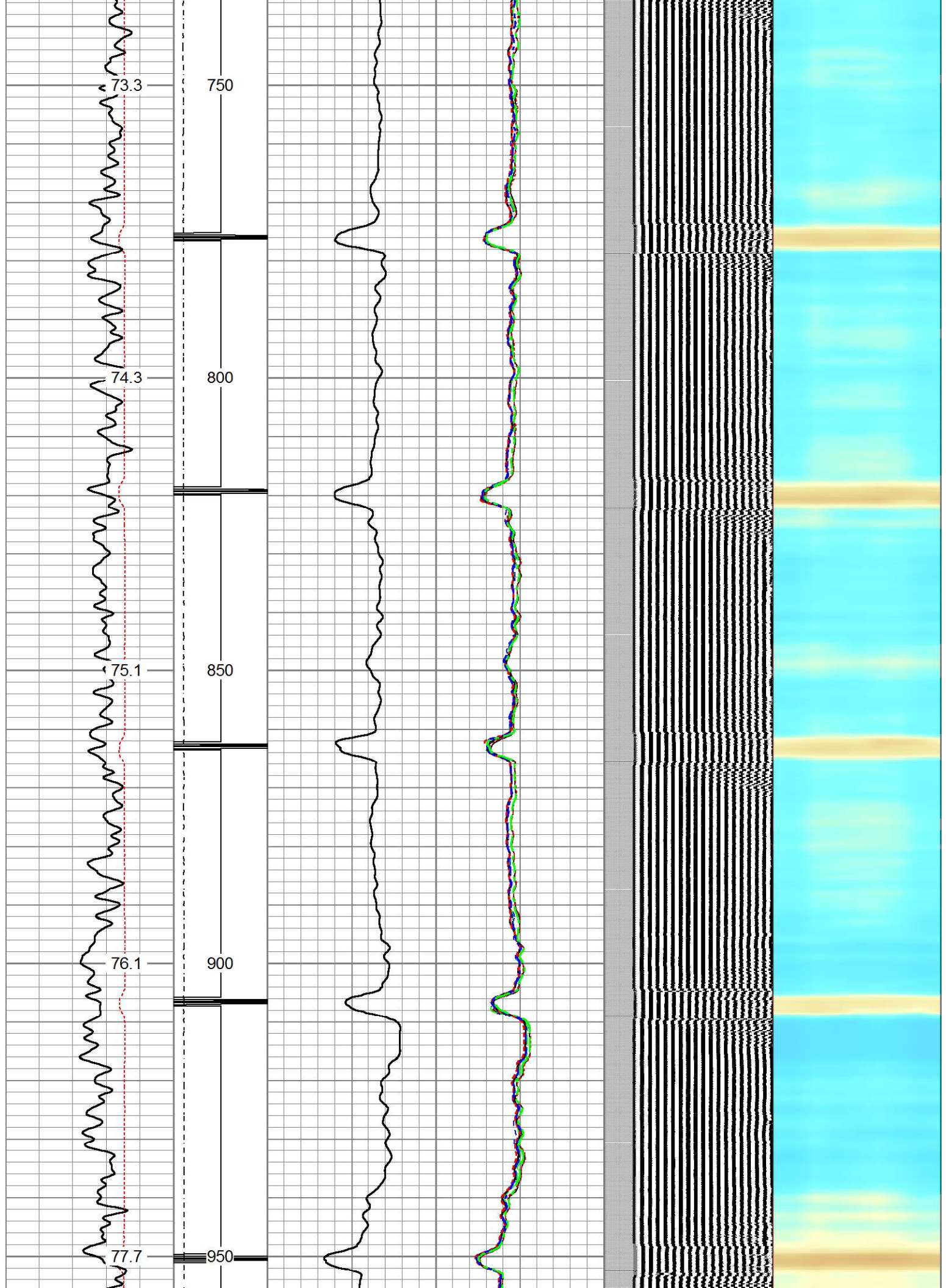
Database File 05-123-15027_hsr-rewank4-7a_oxy.db
 Dataset Pathname pass10
 Presentation Format rbt-gct8acc
 Dataset Creation Fri Dec 10 12:12:17 2021
 Charted by Depth in Feet scaled 1:240

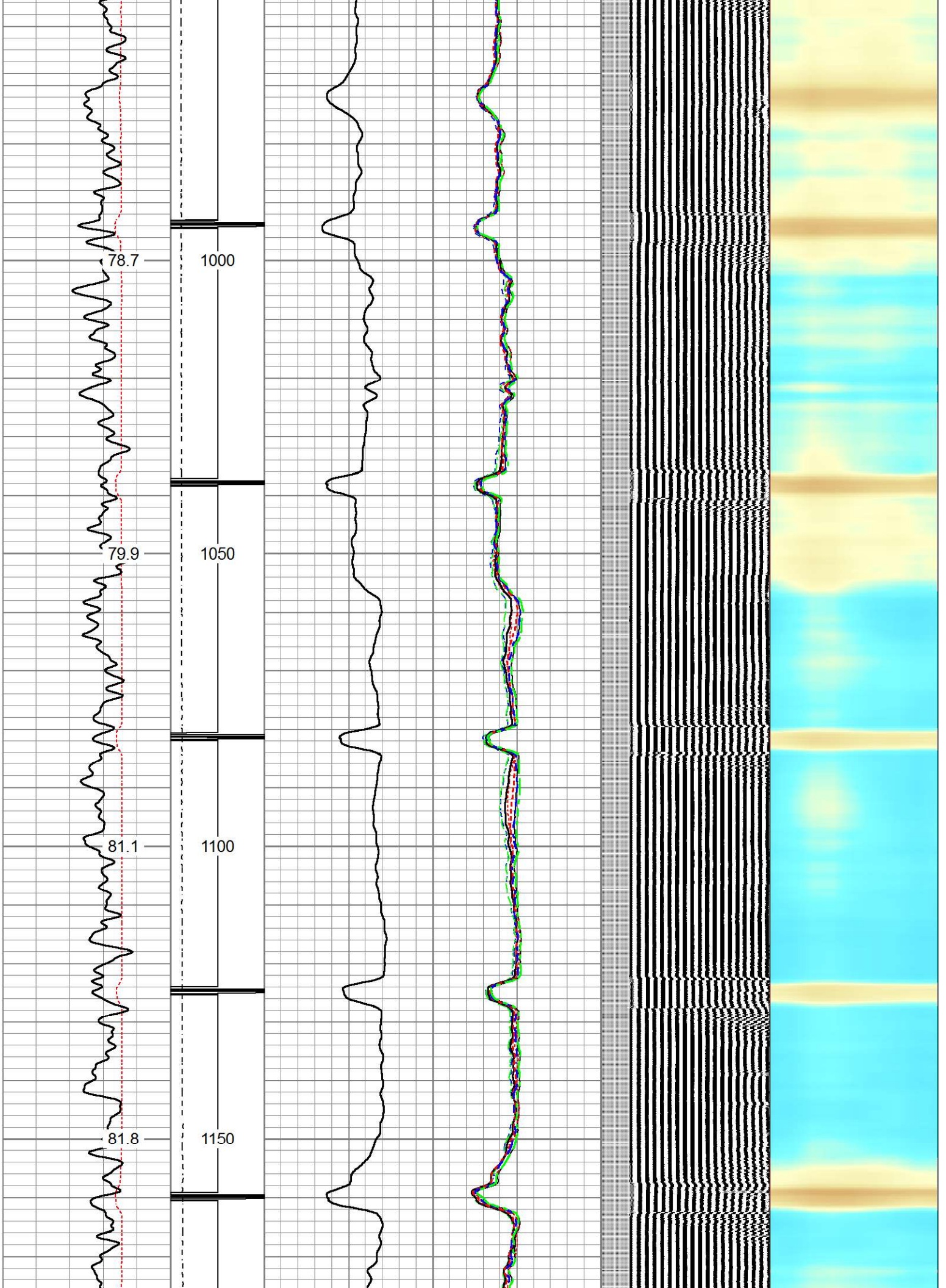
Travel Time	-1 CCL 1	0 AMP (mV) 100	-5 AMPS1 150	200 VDL (usec) 1200	1 Cement Map 8
400 (usec) 200	LTEN	0 AMPx10 (mV) 10	-5 AMPS2 150		
Gamma Ray	0 (lb/3000)		-5 AMPS3 150		
0 (GAPI) 200			-5 AMPS4 150		
TEMP			-5 AMPS5 150		
(degF)			-5 AMPS6 150		
			-5 AMPS7 150		
			-5 AMPS8 150		

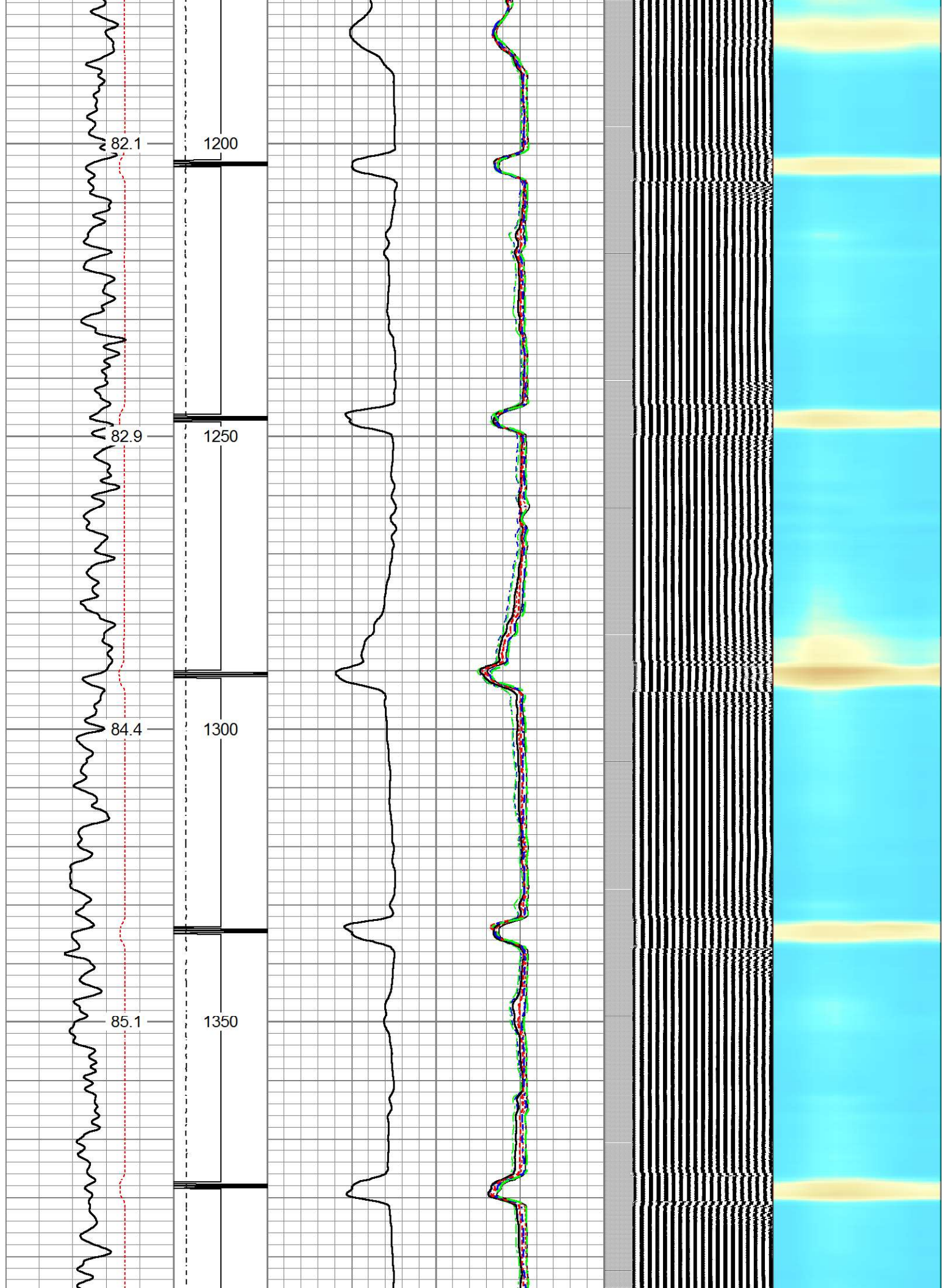


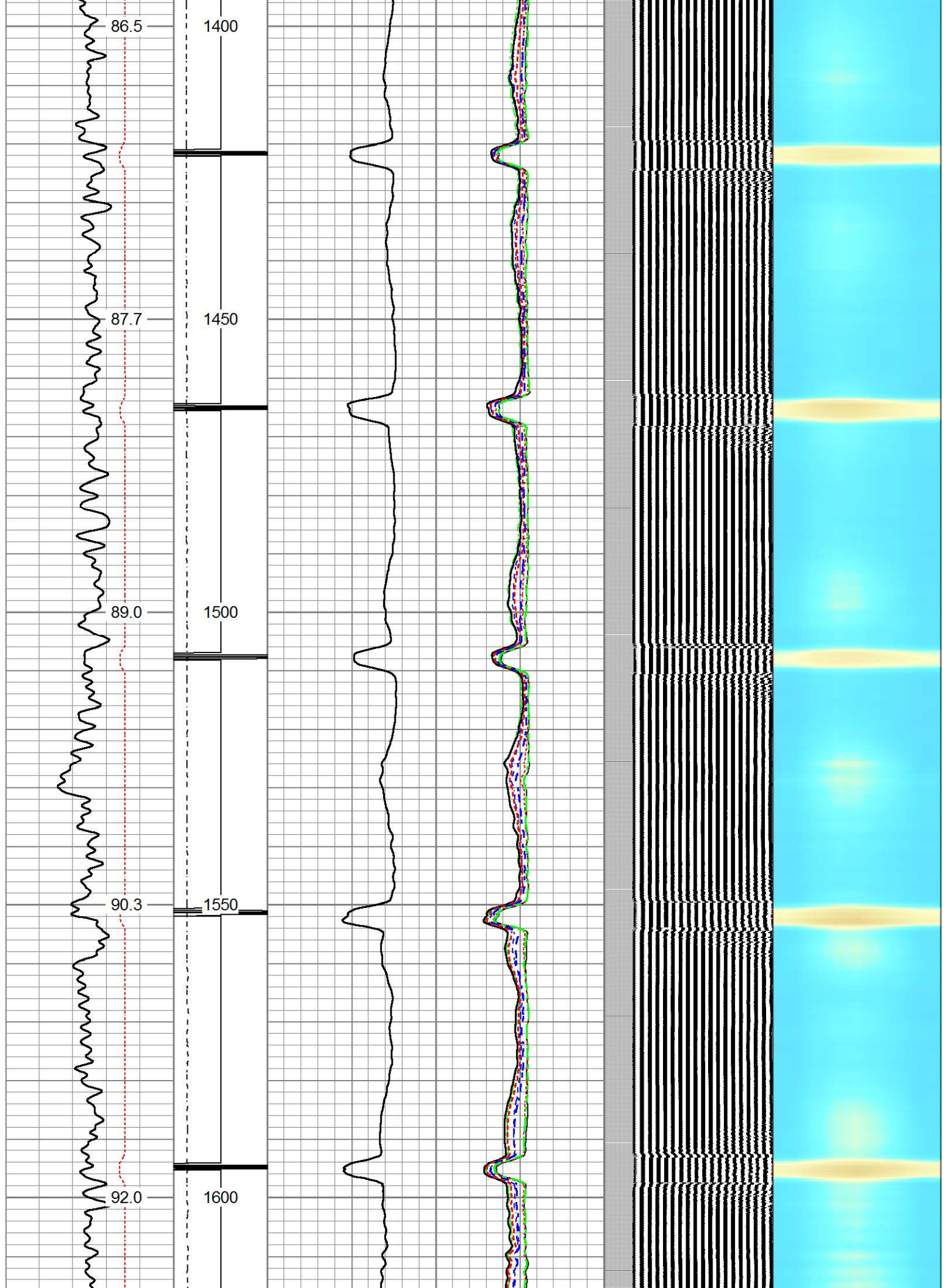


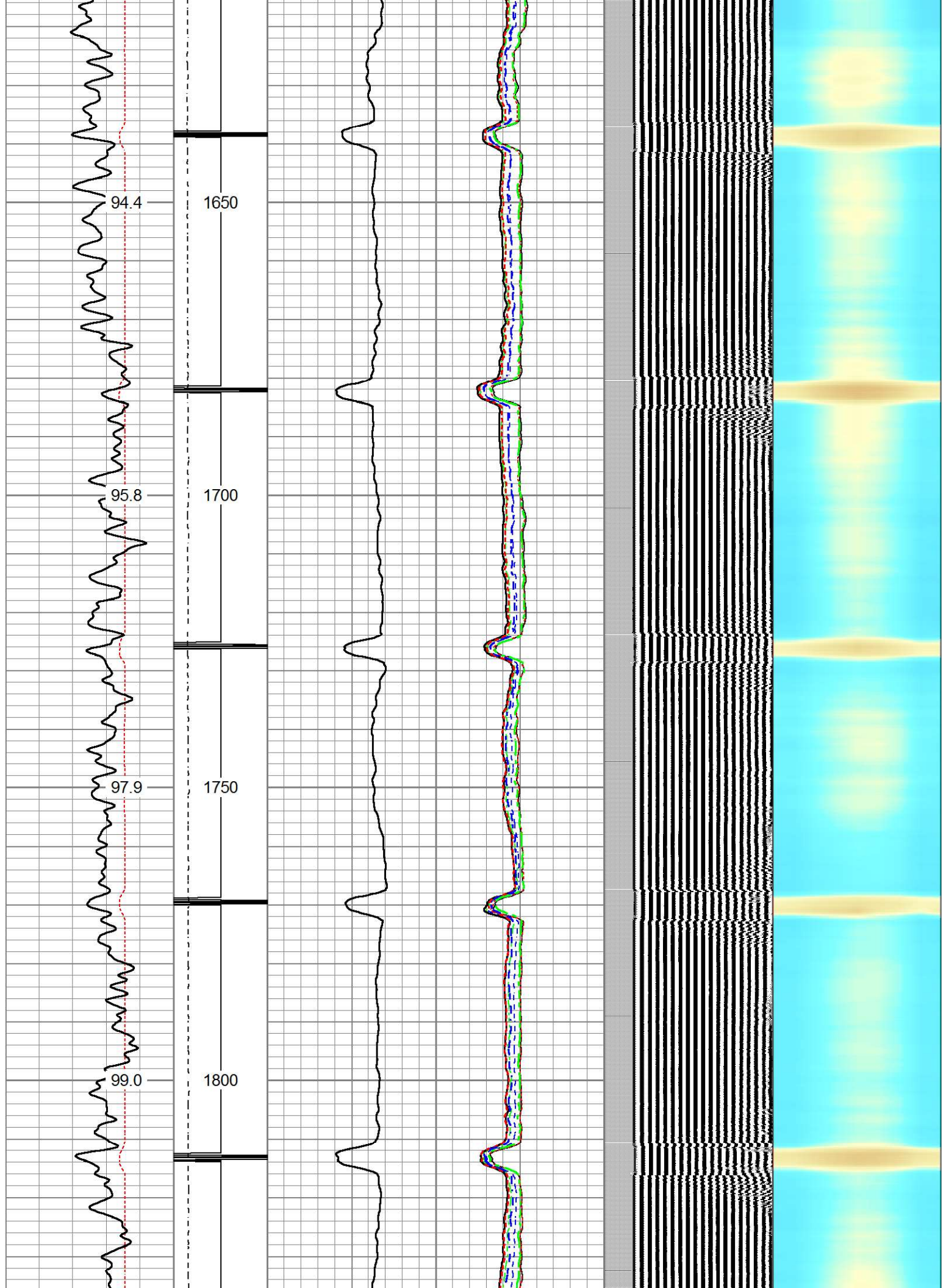


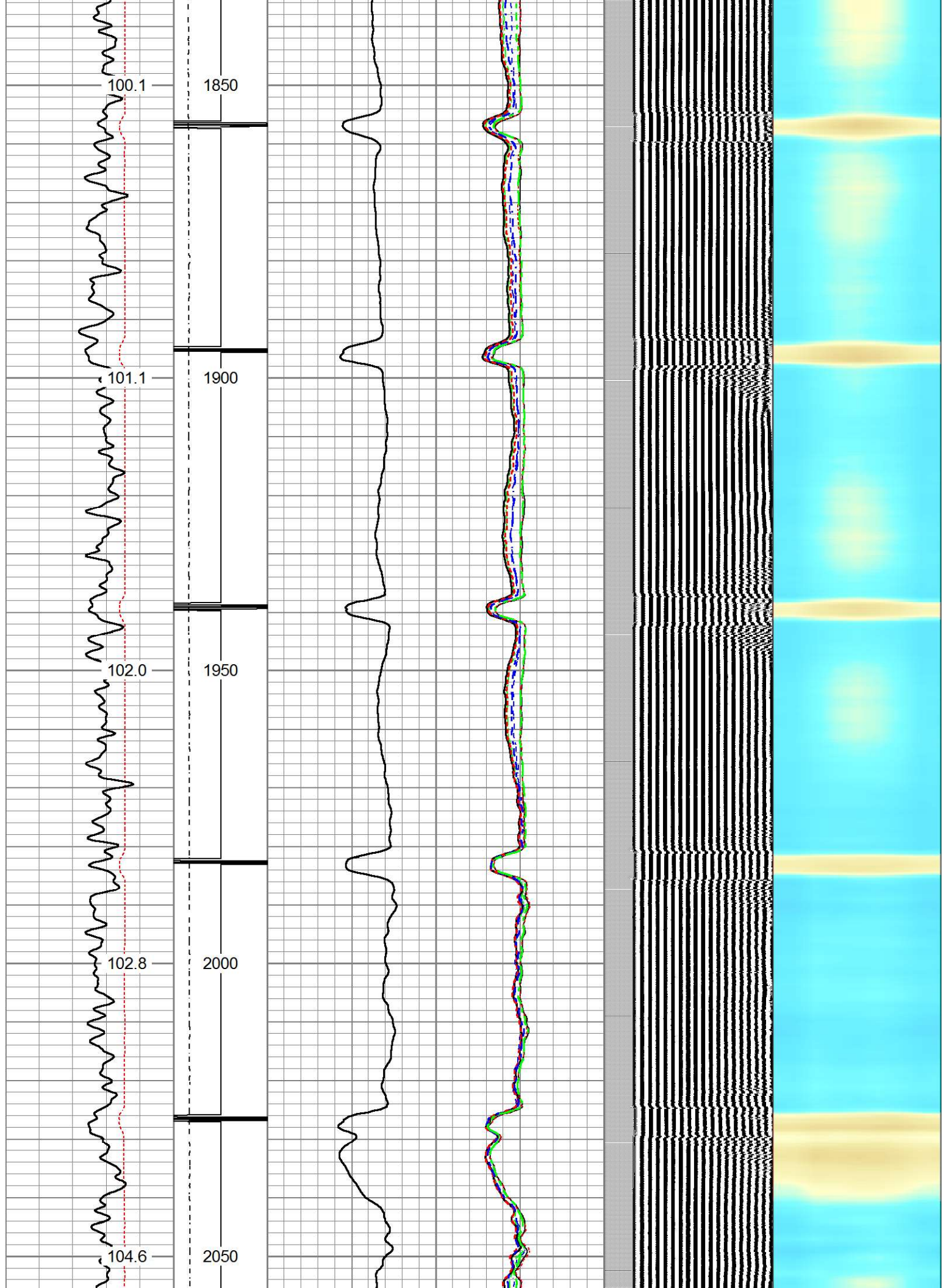


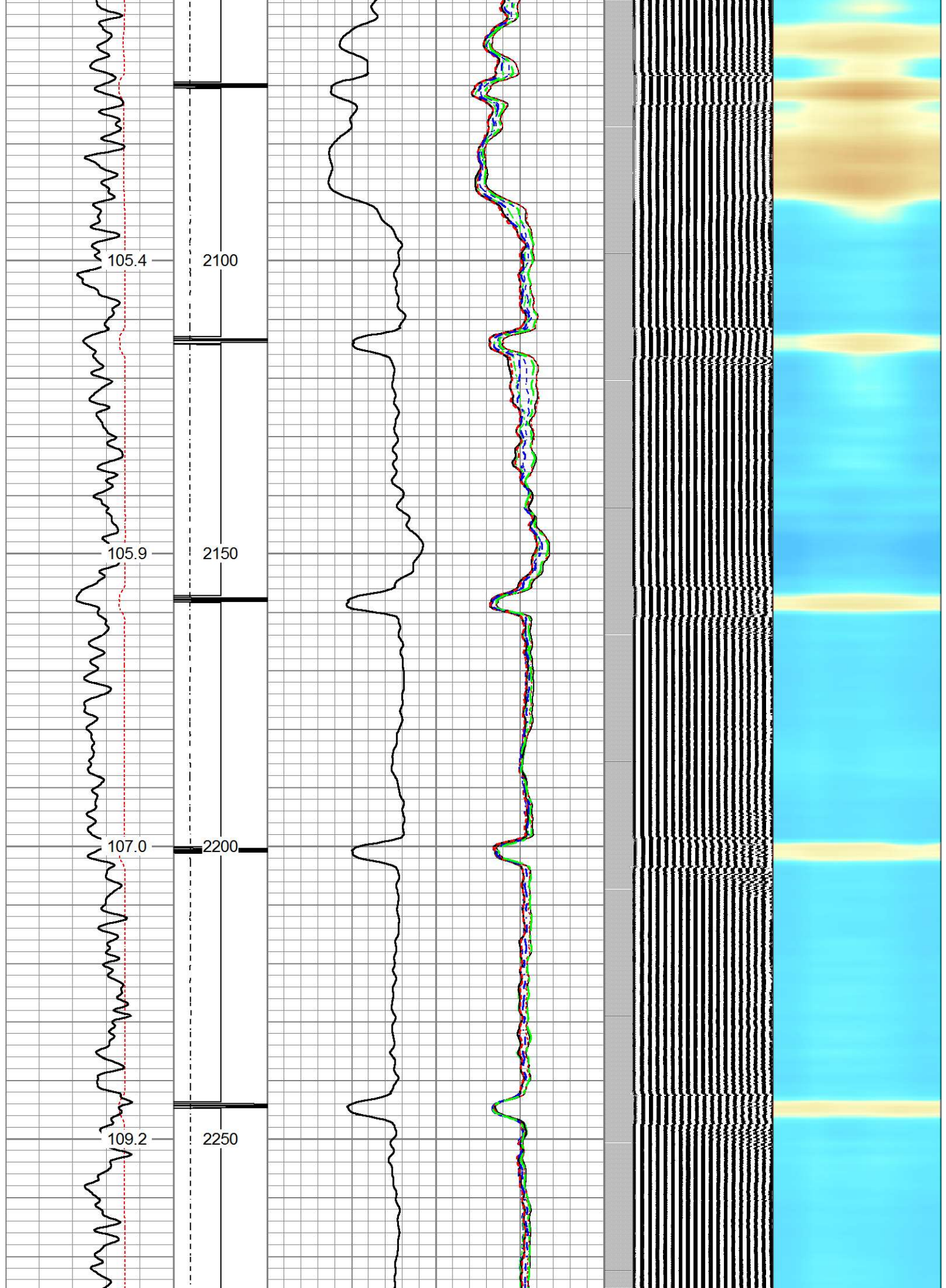


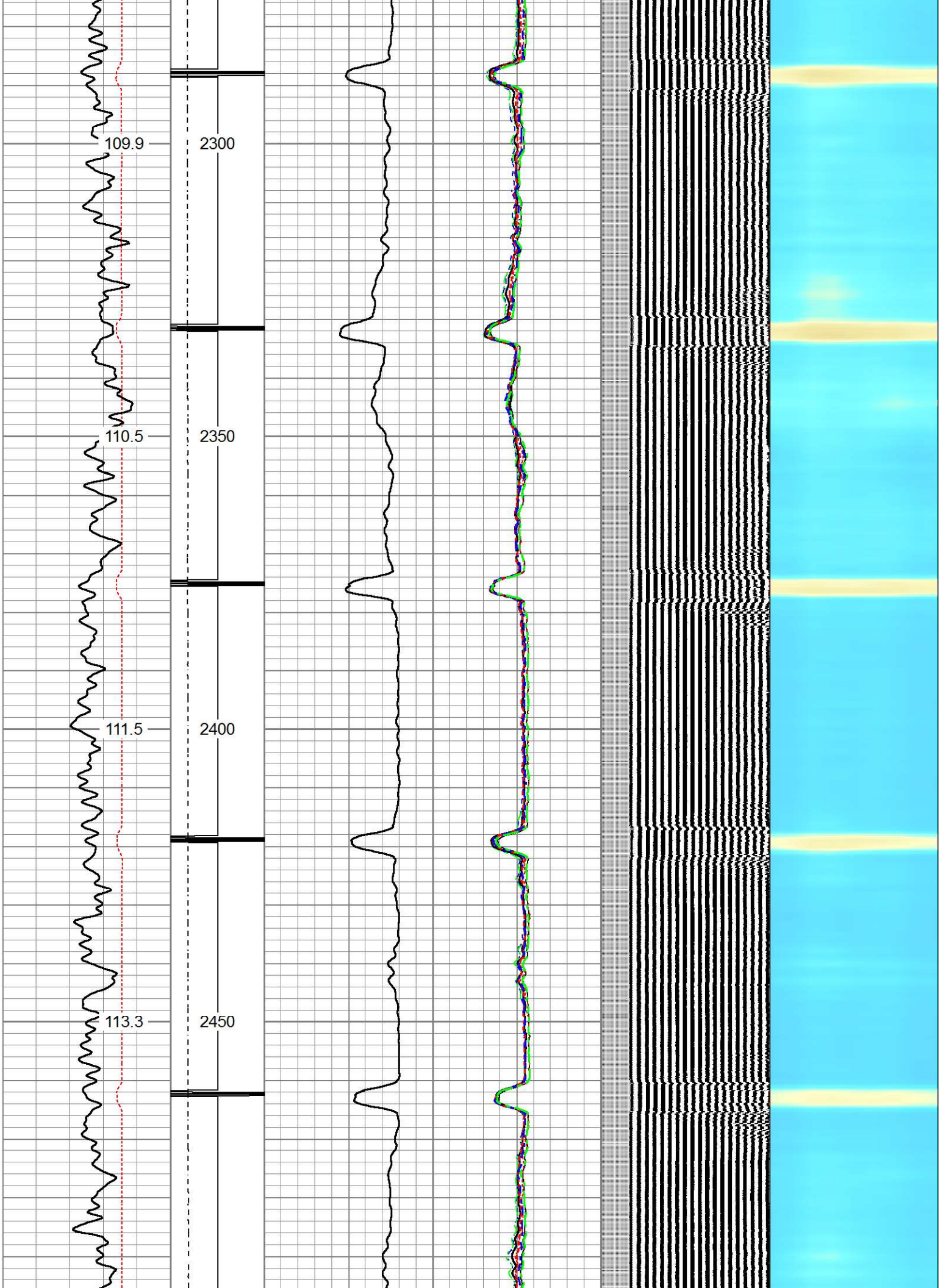


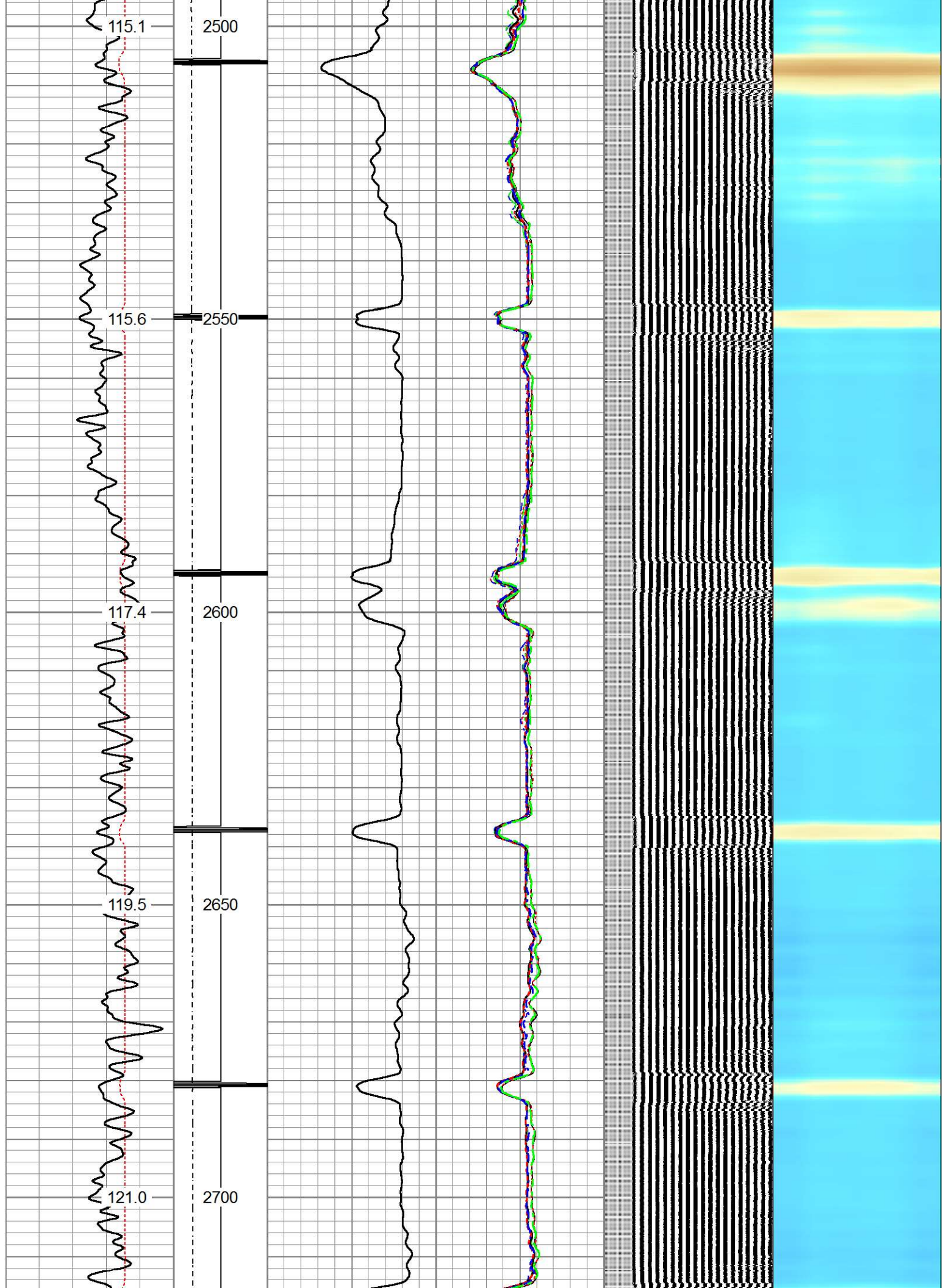


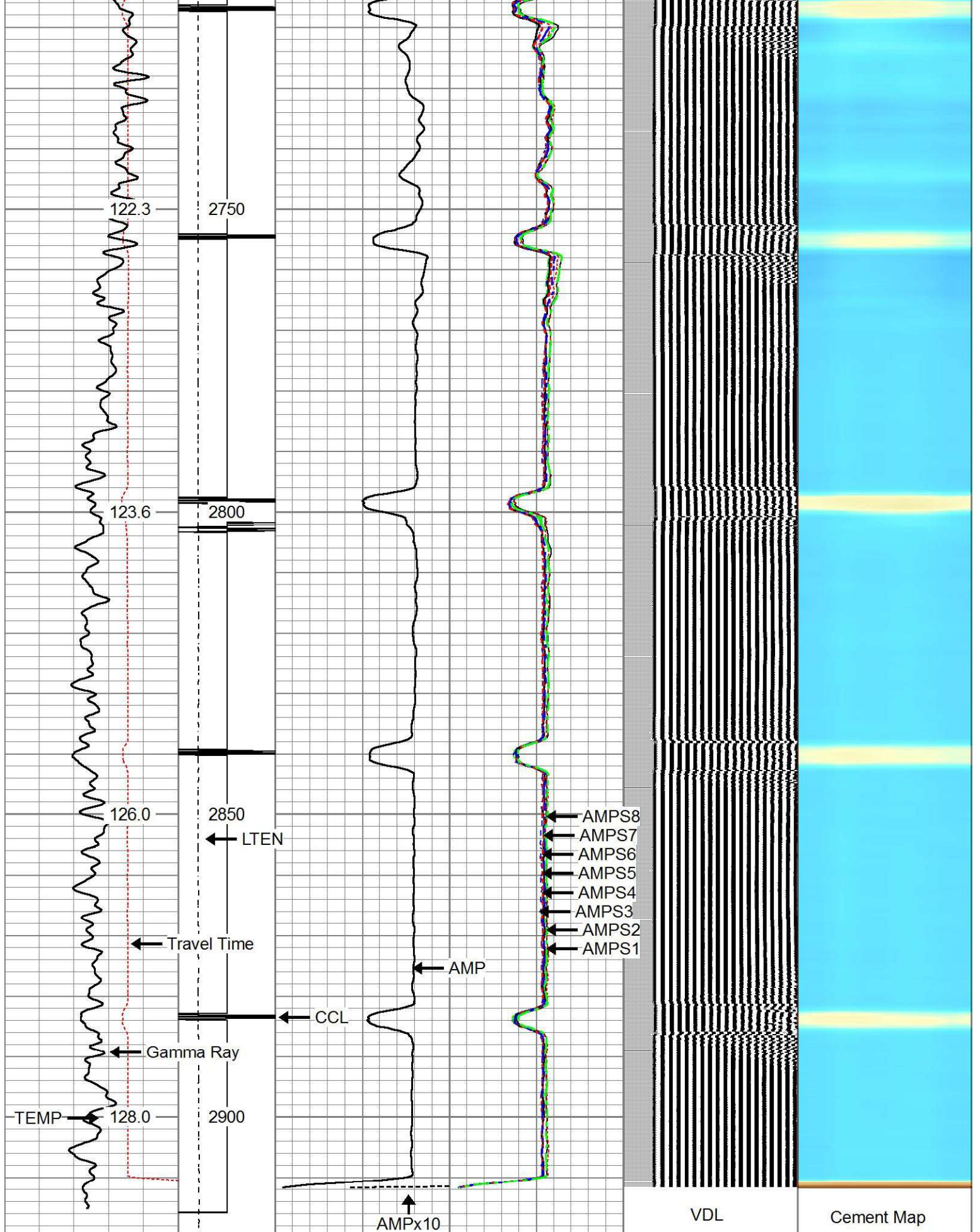












Travel Time	-1	CCL	1	0	AMP (mV)	100	-5	AMPS1	150	200	VDL (usec)	1200	1	Cement Map	8
400 (usec)	200	LTEN	0	AMPx10 (mV)	10	-5	AMPS2	150							
Gamma Ray	0	(lb/3000)				-5	AMPS3	150							

0	(GAPI)	200
	TEMP	
	(degF)	

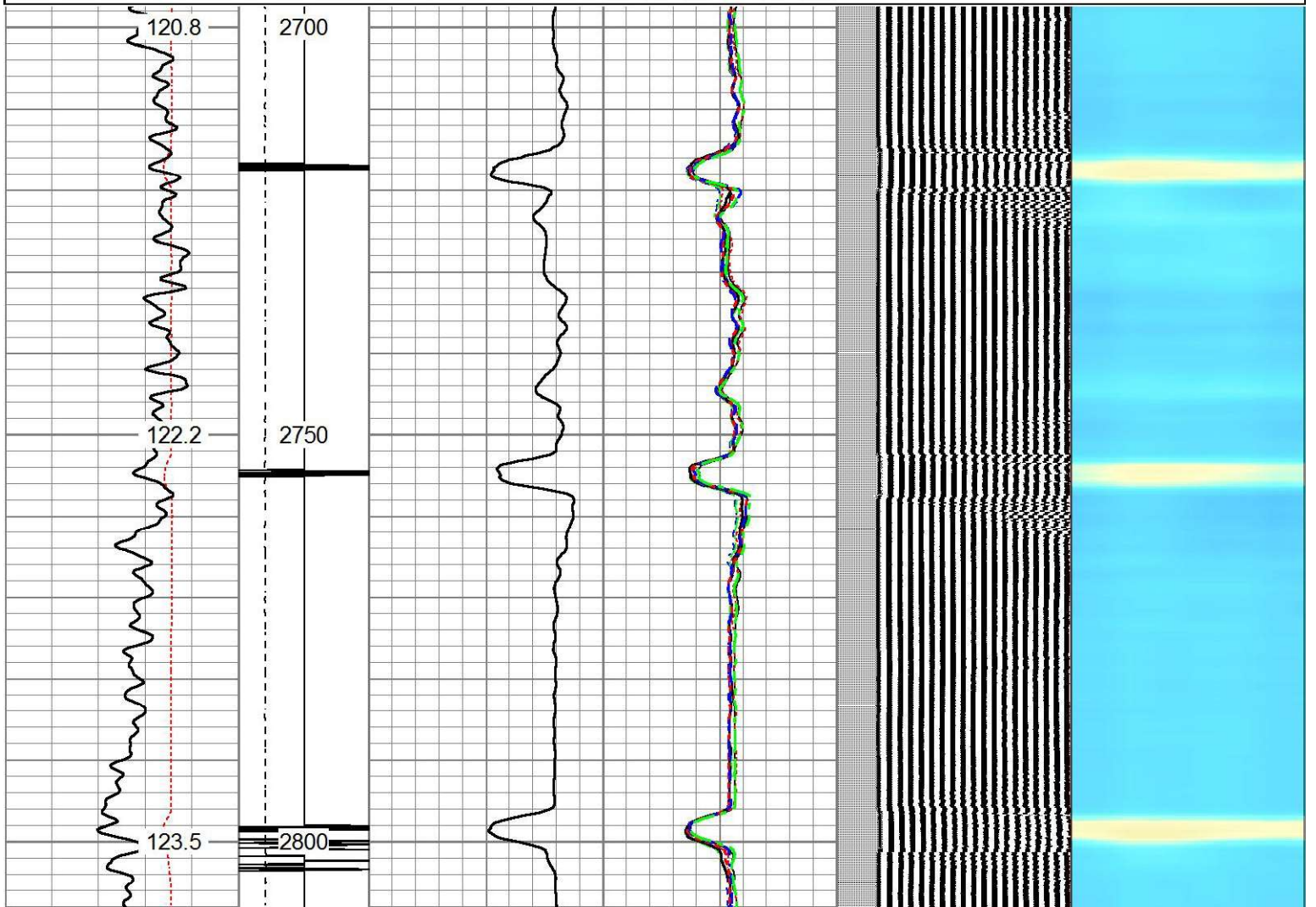
-5	AMPS4	150
-5	AMPS5	150
-5	AMPS6	150
-5	AMPS7	150
-5	AMPS8	150

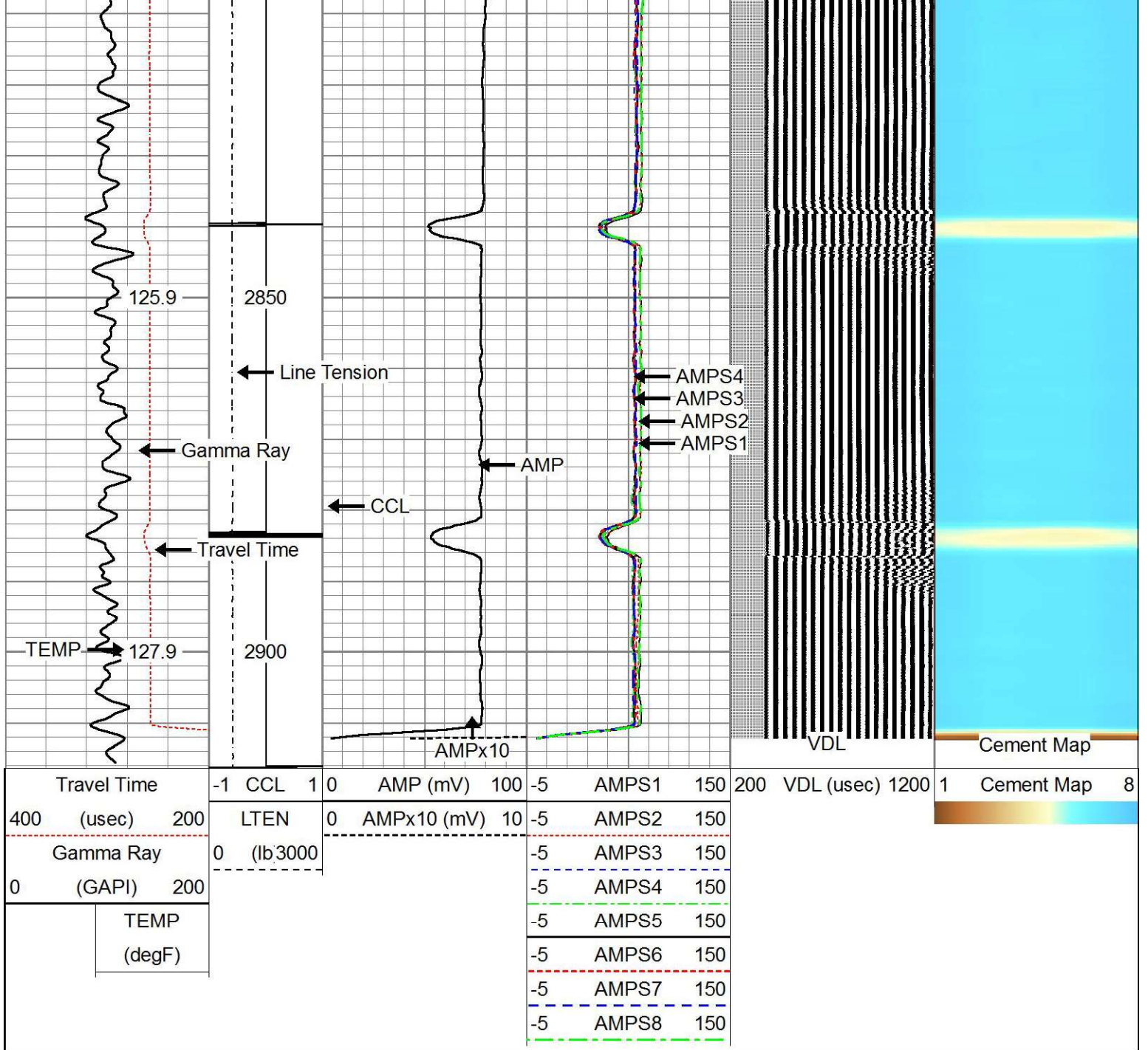


REPEAT PASS

Database File 05-123-15027_hsr-rewank4-7a_oxy.db
 Dataset Pathname pass8
 Presentation Format rbt-gct8acc
 Dataset Creation Fri Dec 10 12:07:22 2021
 Charted by Depth in Feet scaled 1:240

Travel Time	-1 CCL	1 0	AMP (mV)	100	-5	AMPS1	150	200	VDL (usec)	1200	1	Cement Map	8
400 (usec)													
Gamma Ray	LTEN	0	AMPx10 (mV)	10	-5	AMPS2	150						
0 (GAPI)	0 (lb3000)				-5	AMPS3	150						
					-5	AMPS4	150						
					-5	AMPS5	150						
					-5	AMPS6	150						
					-5	AMPS7	150						
					-5	AMPS8	150						





Company **Occidental Petroleum Corp.**
 Well **HSR-REWANK 4-7A**
 Field **WATTENBERG**
 County **WELD**

State **CO**



Radial Bond Log