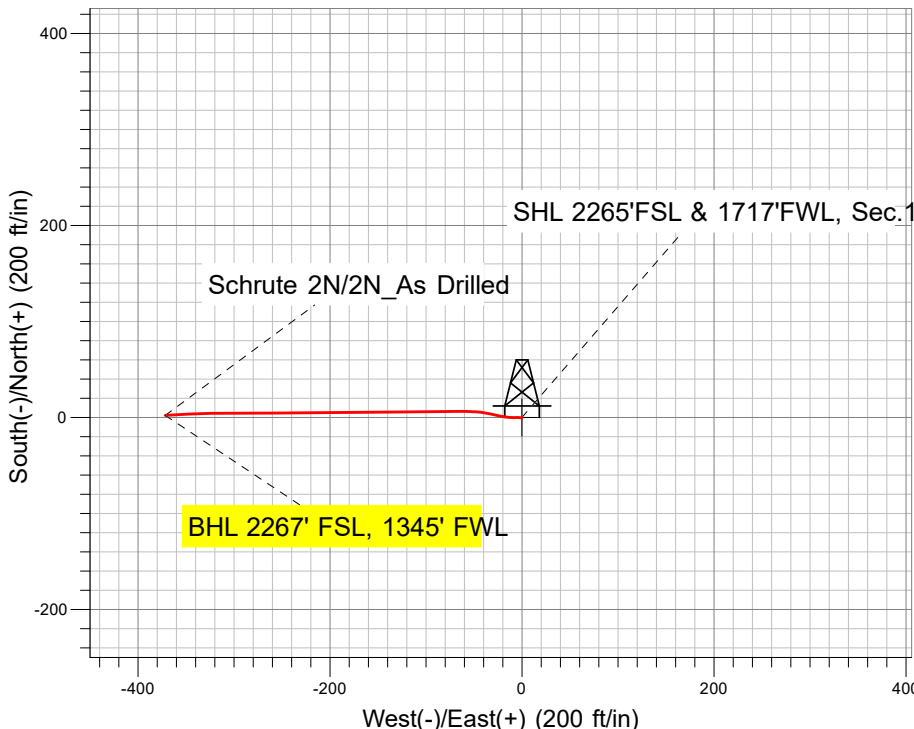
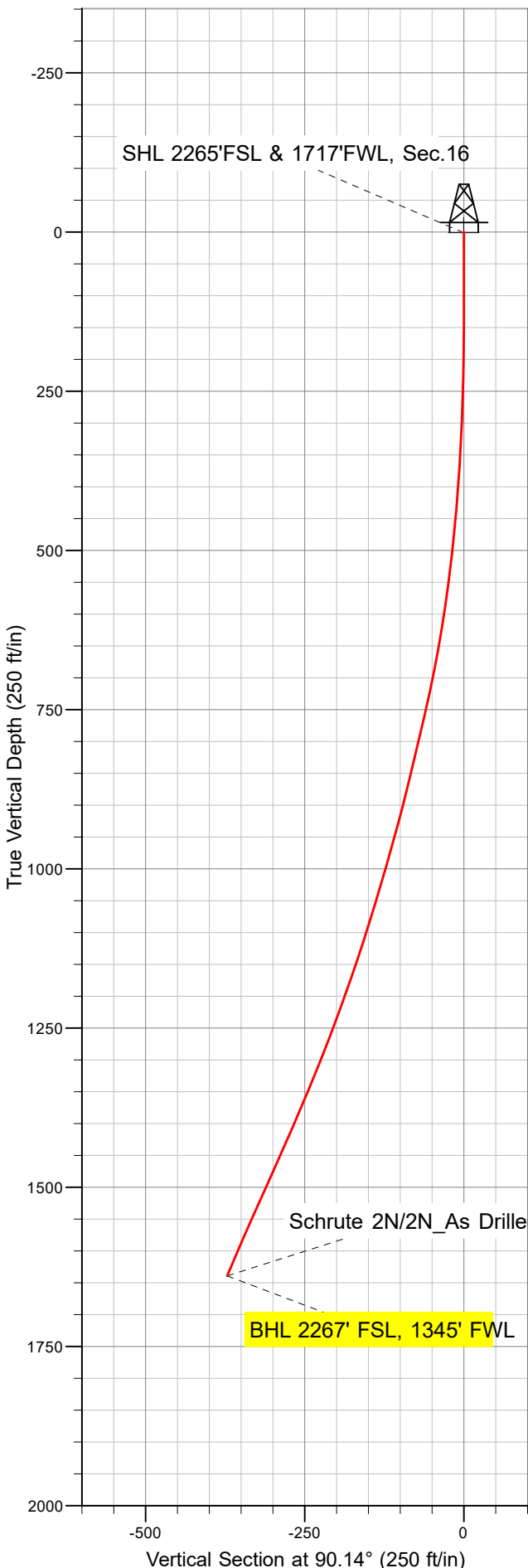




**Well Name:** Schrute 2N  
Surface Location: Schrute 5N64W16 1-10 Pad Sec.16-T5N-R64W  
North American Datum 1983 US State Plane 1983 Colorado Northern Zone  
Ground Elevation: 4613.0  
+N/-S +E/-W Northing Easting Latitude Longitude  
0.0 0.0 1389330.04 3262284.72 40.398290 -104.558265  
Ensign 122 RKB - 13' WELL @ 4626.0ft (Ensign 122 RKB - 13')

**PDC Energy Inc. DJ Basin**

**Final Survey Plot**



Project: SEC.16-T5N-R64W  
Site: Schrute 5N64W16 1-10 Pad Sec.16-T5N-R64W  
Well: Schrute 2N  
Plan: 2N\_As Drilled

**Azimuths to True North**  
Magnetic North: 7.73°

Magnetic Field  
Strength: 51898.5nT  
Dip Angle: 66.74°  
Date: 12/07/2021  
Model: HRGM



# **PDC Energy Inc. DJ Basin**

**SEC.16-T5N-R64W**

**Schrute 5N64W16 1-10 Pad Sec.16-T5N-R64W**

**Schrute 2N**

**Schrute 2N Wellbore #1**

**Survey: 2N\_As Drilled**

## **Standard Survey Report**

**08 February, 2022**

<b>Company:</b>	PDC Energy Inc. DJ Basin	<b>Local Co-ordinate Reference:</b>	Well Schrute 2N
<b>Project:</b>	SEC.16-T5N-R64W	<b>TVD Reference:</b>	WELL @ 4626.0ft (Ensign 122 RKB - 13')
<b>Site:</b>	Schrute 5N64W16 1-10 Pad Sec.16-T5N-R64W	<b>MD Reference:</b>	WELL @ 4626.0ft (Ensign 122 RKB - 13')
<b>Well:</b>	Schrute 2N	<b>North Reference:</b>	True
<b>Wellbore:</b>	Schrute 2N Wellbore #1	<b>Survey Calculation Method:</b>	Minimum Curvature
<b>Design:</b>	2N_As Drilled	<b>Database:</b>	US_EDM

<b>Project</b>	SEC.16-T5N-R64W, Weld County, CO		
<b>Map System:</b>	US State Plane 1983	<b>System Datum:</b>	Mean Sea Level
<b>Geo Datum:</b>	North American Datum 1983		
<b>Map Zone:</b>	Colorado Northern Zone		Using geodetic scale factor

Site	Schrute 5N64W16 1-10 Pad Sec.16-T5N-R64W				
Site Position:		Northing:	1,389,329.90 usft	Latitude:	40.398290
From:	Lat/Long	Easting:	3,262,269.80 usft	Longitude:	-104.558319
Position Uncertainty:	0.0 ft	Slot Radius:	13-3/16 "	Grid Convergence:	0.61 °

Well	Schrute 2N					
Well Position	+N/-S	0.0 ft	Northing:	1,389,330.04 usfl	Latitude:	40.398290
	+E/-W	0.0 ft	Easting:	3,262,284.72 usfl	Longitude:	-104.558265
Position Uncertainty		0.0 ft	Wellhead Elevation:	ft	Ground Level:	4,613.0 ft

<b>Wellbore</b>	Schrute 2N Wellbore #1				
Magnetics	Model Name	Sample Date	Declination (°)	Dip Angle (°)	Field Strength (nT)
	HRGM	12/07/2021	7.73	66.74	51,898.53645128

<b>Design</b>	2N_As Drilled				
<b>Audit Notes:</b>					
<b>Version:</b>	1.0	<b>Phase:</b>	ACTUAL	<b>Tie On Depth:</b>	0.0
Vertical Section:	Depth From (TVD) (ft)	+N/-S (ft)	+E/-W (ft)	Direction (°)	
	0.0	0.0	0.0	90.14	

<b>Survey Program</b>	Date 02/08/2022				
From (ft)	To (ft)	Survey (Wellbore)	Tool Name	Description	
147.0	1,699.0	2N_As Drilled (Schrute 2N Wellbore #1)	MWD	MWD - Standard	

<b>Survey</b>									
Measured Depth (ft)	Inclination (°)	Azimuth (°)	Vertical Depth (ft)	+N/-S (ft)	+E/-W (ft)	Vertical Section (ft)	Dogleg Rate (°/100usft)	Build Rate (°/100usft)	Turn Rate (°/100usft)
0.0	0.00	0.00	0.0	0.0	0.0	0.0	0.00	0.00	0.00
147.0	0.20	152.40	147.0	-0.2	0.1	0.1	0.14	0.14	0.00
238.0	1.50	283.20	238.0	-0.1	-1.0	-1.0	1.80	1.43	143.74
330.0	3.00	270.00	329.9	0.2	-4.5	-4.5	1.71	1.63	-14.35
419.0	4.50	267.70	418.7	0.0	-10.4	-10.4	1.69	1.69	-2.58
508.0	6.50	281.90	507.3	0.9	-18.8	-18.8	2.70	2.25	15.96
598.0	8.60	281.90	596.5	3.4	-30.4	-30.4	2.33	2.33	0.00
687.0	11.30	276.00	684.2	5.7	-45.5	-45.6	3.24	3.03	-6.63
777.0	13.10	269.80	772.2	6.5	-64.5	-64.5	2.47	2.00	-6.89
866.0	13.60	269.10	858.7	6.3	-85.1	-85.1	0.59	0.56	-0.79

<b>Company:</b>	PDC Energy Inc. DJ Basin	<b>Local Co-ordinate Reference:</b>	Well Schrute 2N
<b>Project:</b>	SEC.16-T5N-R64W	<b>TVD Reference:</b>	WELL @ 4626.0ft (Ensign 122 RKB - 13')
<b>Site:</b>	Schrute 5N64W16 1-10 Pad Sec.16-T5N-R64W	<b>MD Reference:</b>	WELL @ 4626.0ft (Ensign 122 RKB - 13')
<b>Well:</b>	Schrute 2N	<b>North Reference:</b>	True
<b>Wellbore:</b>	Schrute 2N Wellbore #1	<b>Survey Calculation Method:</b>	Minimum Curvature
<b>Design:</b>	2N_As Drilled	<b>Database:</b>	US_EDM

Survey										
Measured Depth (ft)	Inclination (°)	Azimuth (°)	Vertical Depth (ft)	+N/-S (ft)	+E/-W (ft)	Vertical Section (ft)	Dogleg Rate (°/100usft)	Build Rate (°/100usft)	Turn Rate (°/100usft)	
956.0	15.50	268.90	945.9	5.9	-107.7	-107.7	2.11	2.11	-0.22	
1,045.0	16.50	270.90	1,031.4	5.9	-132.2	-132.2	1.28	1.12	2.25	
1,134.0	17.80	269.10	1,116.4	5.9	-158.4	-158.4	1.58	1.46	-2.02	
1,223.0	20.10	269.10	1,200.6	5.5	-187.3	-187.3	2.58	2.58	0.00	
1,313.0	21.00	268.80	1,284.9	4.9	-218.9	-218.9	1.01	1.00	-0.33	
1,402.0	23.10	270.30	1,367.4	4.6	-252.3	-252.3	2.44	2.36	1.69	
1,491.0	23.90	270.30	1,449.0	4.8	-287.8	-287.8	0.90	0.90	0.00	
1,578.0	24.40	268.90	1,528.4	4.6	-323.4	-323.4	0.87	0.57	-1.61	
1,639.0	23.20	266.70	1,584.2	3.6	-348.0	-348.0	2.45	-1.97	-3.61	
1,699.0	23.20	266.70	1,639.3	2.3	-371.6	-371.6	0.00	0.00	0.00	
BHL 2267' FSL, 1345' FWL										

Survey Annotations					
Measured Depth (ft)	Vertical Depth (ft)	Local Coordinates			
		+N/-S (ft)	+E/-W (ft)	Comment	
1,699.0	1,639.3	2.3	-371.6	BHL 2267' FSL, 1345' FWL	