



Well Name: Schrute 1NR

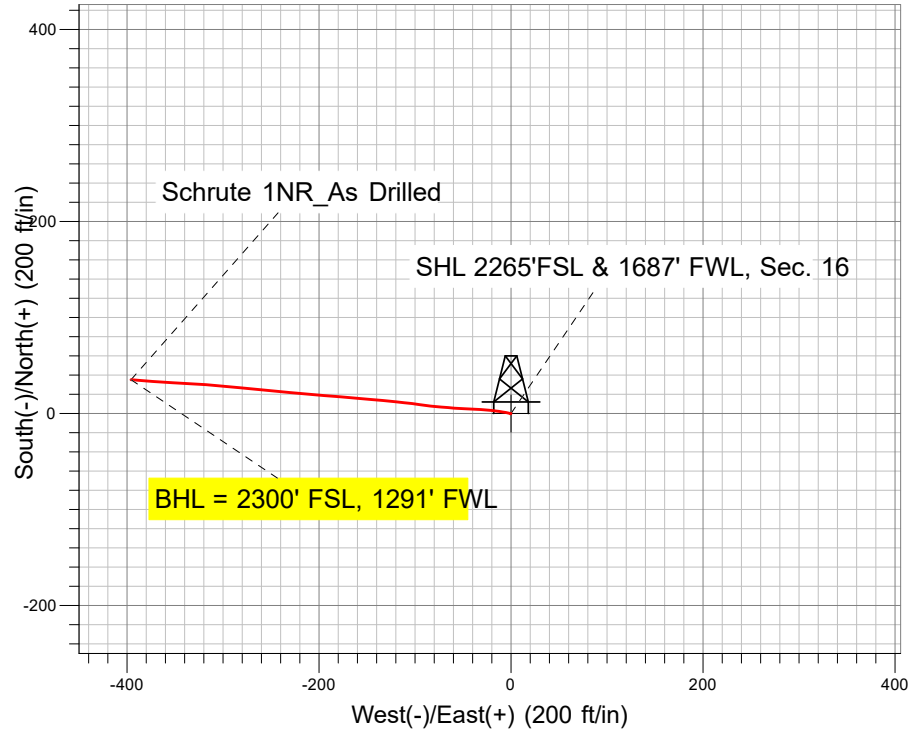
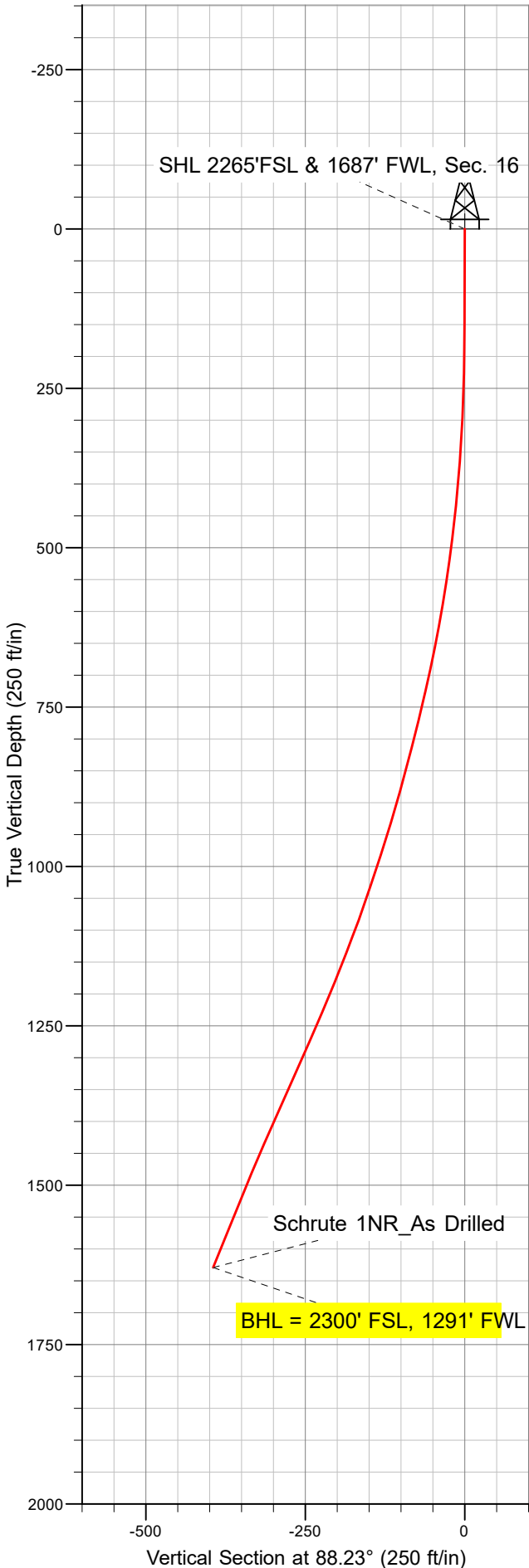
Surface Location: Schrute 5N64W16 1-10 Pad Sec.16-T5N-R64W
North American Datum 1983 US State Plane 1983 Colorado Northern Zone
Ground Elevation: 4613.0

+N/-S	+E/-W	Northing	Easting	Latitude	Longitude
0.0	0.0	1389332.03	3262254.77	40.398296	-104.558372

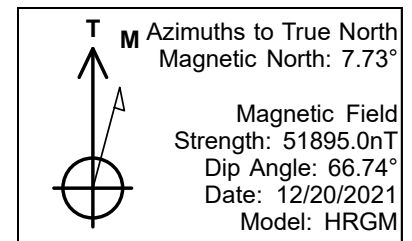
Ensign 122 RKB - 13' WELL @ 4626.0ft (Ensign 122 RKB - 13')

PDC Energy Inc. DJ Basin

Final Survey Plot



Project: SEC.16-T5N-R64W
Site: Schrute 5N64W16 1-10 Pad Sec.16-T5N-R64W
Well: Schrute 1NR
Plan: 1N_As Drilled





PDC Energy Inc. DJ Basin

SEC.16-T5N-R64W

Schrute 5N64W16 1-10 Pad Sec.16-T5N-R64W

Schrute 1NR

Schrute 1N Wellbore #2

Survey: 1N_As Drilled

Standard Survey Report

08 February, 2022



**directional
drilling**

Company:	PDC Energy Inc. DJ Basin	Local Co-ordinate Reference:	Well Schrute 1NR
Project:	SEC.16-T5N-R64W	TVD Reference:	WELL @ 4626.0ft (Ensign 122 RKB - 13')
Site:	Schrute 5N64W16 1-10 Pad Sec.16-T5N-R64W	MD Reference:	WELL @ 4626.0ft (Ensign 122 RKB - 13')
Well:	Schrute 1NR	North Reference:	True
Wellbore:	Schrute 1N Wellbore #2	Survey Calculation Method:	Minimum Curvature
Design:	1N_As Drilled	Database:	US_EDM

Project	SEC.16-T5N-R64W, Weld County, CO		
Map System:	US State Plane 1983	System Datum:	Mean Sea Level
Geo Datum:	North American Datum 1983		
Map Zone:	Colorado Northern Zone		Using geodetic scale factor

Site						Schrute 5N64W16 1-10 Pad Sec.16-T5N-R64W											
Site Position:						Northing:			1,389,329.90 usft			Latitude:			40.398290		
From:			Lat/Long			Easting:			3,262,269.80 usft			Longitude:			-104.558319		
Position Uncertainty:			0.0 ft			Slot Radius:			13-3/16 "			Grid Convergence:			0.61 °		

Well	Schrute 1N					
Well Position	+N/-S	0.0 ft	Northing:	1,389,332.03 usfl	Latitude:	40.398296
	+E/-W	0.0 ft	Easting:	3,262,254.77 usfl	Longitude:	-104.558372
Position Uncertainty		0.0 ft	Wellhead Elevation:	0.0 ft	Ground Level:	4,613.0 ft

Wellbore	Schrute 1N Wellbore #2				
Magnetics	Model Name	Sample Date	Declination (°)	Dip Angle (°)	Field Strength (nT)
	HRGM	12/20/2021	7.73	66.74	51,894.97158858

Design	1N_As Drilled				
Audit Notes:					
Version:	1.0	Phase:	ACTUAL	Tie On Depth:	0.0
Vertical Section:	Depth From (TVD) (ft)	+N/-S (ft)	+E/-W (ft)	Direction (°)	
	0.0	0.0	0.0	88.23	

Survey Program	Date	02/08/2022			
From (ft)	To (ft)	Survey (Wellbore)	Tool Name	Description	
147.0	1,696.0	1N_As Drilled (Schrute 1N Wellbore #2)	MWD	MWD - Standard	

Survey									
Measured Depth (ft)	Inclination (°)	Azimuth (°)	Vertical Depth (ft)	+N/-S (ft)	+E/-W (ft)	Vertical Section (ft)	Dogleg Rate (°/100usft)	Build Rate (°/100usft)	Turn Rate (°/100usft)
0.0	0.00	0.00	0.0	0.0	0.0	0.0	0.00	0.00	0.00
147.0	0.20	247.50	147.0	-0.1	-0.2	-0.2	0.14	0.14	0.00
238.0	1.40	293.00	238.0	0.3	-1.4	-1.4	1.39	1.32	50.00
330.0	3.70	278.40	329.9	1.1	-5.4	-5.3	2.58	2.50	-15.87
419.0	5.30	280.40	418.6	2.3	-12.3	-12.2	1.81	1.80	2.25
508.0	7.70	274.20	507.0	3.5	-22.3	-22.1	2.81	2.70	-6.97
598.0	9.60	273.70	596.0	4.4	-35.8	-35.6	2.11	2.11	-0.56
687.0	12.00	272.80	683.4	5.3	-52.4	-52.2	2.70	2.70	-1.01
777.0	14.00	275.40	771.1	6.8	-72.6	-72.3	2.31	2.22	2.89
866.0	15.20	277.60	857.2	9.4	-94.9	-94.5	1.49	1.35	2.47

Company:	PDC Energy Inc. DJ Basin	Local Co-ordinate Reference:	Well Schrute 1NR
Project:	SEC.16-T5N-R64W	TVD Reference:	WELL @ 4626.0ft (Ensign 122 RKB - 13')
Site:	Schrute 5N64W16 1-10 Pad Sec.16-T5N-R64W	MD Reference:	WELL @ 4626.0ft (Ensign 122 RKB - 13')
Well:	Schrute 1NR	North Reference:	True
Wellbore:	Schrute 1N Wellbore #2	Survey Calculation Method:	Minimum Curvature
Design:	1N_As Drilled	Database:	US_EDM

Survey										
Measured Depth (ft)	Inclination (°)	Azimuth (°)	Vertical Depth (ft)	+N/-S (ft)	+E/-W (ft)	Vertical Section (ft)	Dogleg Rate (°/100usft)	Build Rate (°/100usft)	Turn Rate (°/100usft)	
956.0	17.30	276.00	943.6	12.3	-119.9	-119.4	2.39	2.33	-1.78	
1,045.0	18.60	274.70	1,028.3	14.9	-147.2	-146.7	1.53	1.46	-1.46	
1,134.0	21.00	274.90	1,112.0	17.4	-177.2	-176.6	2.70	2.70	0.22	
1,223.0	22.30	274.70	1,194.8	20.2	-209.9	-209.2	1.46	1.46	-0.22	
1,313.0	24.00	275.40	1,277.5	23.3	-245.2	-244.4	1.91	1.89	0.78	
1,402.0	24.40	276.10	1,358.7	26.9	-281.5	-280.5	0.55	0.45	0.79	
1,491.0	23.50	273.70	1,440.0	30.0	-317.5	-316.4	1.49	-1.01	-2.70	
1,581.0	22.20	273.00	1,523.0	32.1	-352.4	-351.2	1.48	-1.44	-0.78	
1,636.0	22.20	274.70	1,573.9	33.5	-373.1	-371.9	1.17	0.00	3.09	
1,696.0	22.20	274.70	1,629.4	35.3	-395.7	-394.4	0.00	0.00	0.00	
BHL = 2300' FSL, 1291' FWL										

Survey Annotations					
Measured Depth (ft)	Vertical Depth (ft)	Local Coordinates			
		+N/-S (ft)	+E/-W (ft)	Comment	
1,696.0	1,629.4	35.3	-395.7	BHL = 2300' FSL, 1291' FWL	