

# HALLIBURTON

iCem<sup>®</sup> Service

**MALLARD EXPLORATION LLC-EBUS**

Ft. Lupton District, COLORADO

**For: HANS CARY/ TODD STEPHENS**

Date: Friday, December 17, 2021

**GREEN TEAL FED 34-27-3HN**

WELD, GREEN TEAL FED 34-27-3HN

MALLARD GREEN TEAL FED 34-27-3HN

Job Date: Friday, December 17, 2021

Sincerely,

**KYLE BATH**

## Legal Notice

---

### Disclaimer:

All information in this report is provided subject to the terms and conditions which govern the services provided by Halliburton. Halliburton personnel use their best efforts in gathering information and their best judgment in interpreting it, but any interpretation, research, analysis or recommendation furnished by Halliburton are opinions based upon inferences from measurements and empirical relationships and assumptions, which inferences and empirical relationships and assumptions are not infallible, and with respect to which professionals in the industry may differ. iCem 3D Displacement results are used to understand how fluids intermix during a cement job. Simulation and 3D displacement results are not intended as and should not be used as a replacement for bond logs in determining top of cement. Current 3D model calculations are known to model more volume than the input volume for standard cases due to known calculation improvements required. For rotational cases, the modeled volume will be impacted by the same calculations impacting the standard cases, as well as additional constraints imposed to make the calculation time required operationally feasible. Therefore, until further notice, 3D displacement results should not be used for replacement of a bond log, or used as an identifier of top of cement. HALLIBURTON IS UNABLE TO GUARANTEE THE ACCURACY OF ANY CHART INTERPRETATION, RESEARCH ANALYSIS, OR JOB RECOMMENDATION and any interpretation or recommendation is not for use of or reliance upon by any third party. The customer has full responsibility for any of its decisions which are based on the information provided in this report.

Table of Contents

---

Real-Time Job Summary ..... 4  
    Job Event Log..... 4  
Attachments ..... 7  
    MALLARD GREEN TEAL FED 34-27-3HN-Custom Results.png..... 7  
Custom Graphs ..... 8  
    Custom Graph..... 8

## 1.0 Real-Time Job Summary

### 1.1 Job Event Log

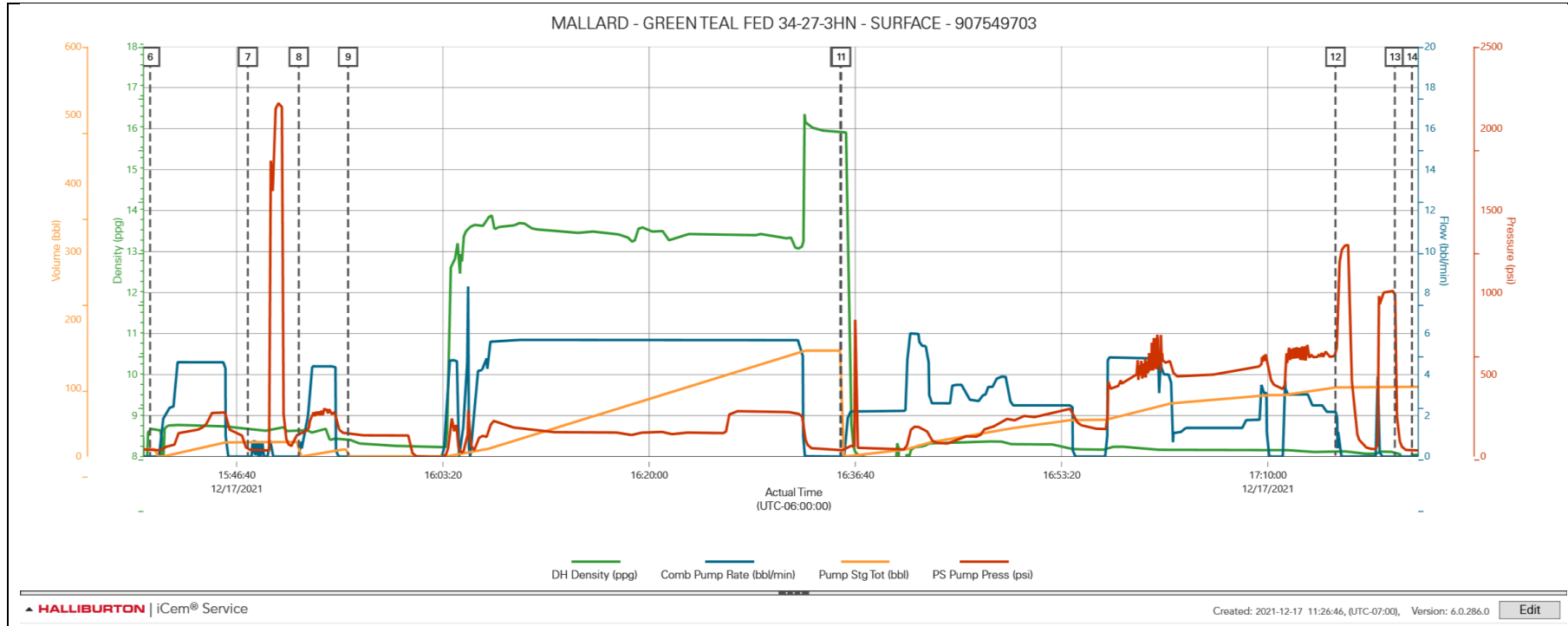
Type	Seq No.	Activity	Graph Label	Date	Time	Source	DH Density (ppg)	Comb Pump Rate (bbl/mi n)	Pump Stg Tot (bbl)	PS Pump Press (psi)	Comments
Event	1	Call Out	Call Out	12/17/2021	00:00:00	USER					CREW CALLED OUT, REQUESTED ON LOCATION 19:30
Event	2	Arrive At Loc	Arrive At Loc	12/17/2021	00:01:00	USER					CREW ON LOCATION FROM PREV JOB, RECIEVED NUMBERS FROM CO REP, TD 1720, TP 1703, SJ 35, CSG 9 5/8 36#, PREV CSG 16" @ 80', HOLE 13.5, MUD 9, 15 CENTALIZERS, WATER TEST, TEMP 70, CHLORIDES 0, PH 7
Event	3	Assessment Of Location Safety Meeting	Assessment Of Location Safety Meeting	12/17/2021	09:00:00	USER					SAFETY MEETING WITH ALL HES EE TO ASSESS ALL HAZARDS
Event	4	Safety Meeting - Pre Rig-Up	Safety Meeting - Pre Rig-Up	12/17/2021	09:15:00	USER					PRE RIG UP SAFETY MEETING WITH ALL HES EE

Event	5	Safety Meeting - Pre Job	Safety Meeting - Pre Job	12/17/2021	14:40:00	USER	0.00	0.00	0.00	34.00	PRE JOB SAFETY MEETING WITH RIG CREW AND CO REP
Event	6	Start Job	Start Job	12/17/2021	15:39:40	COM4	8.68	0.00	10.80	35.00	START RECORDING DATA
Event	7	Test Lines	Test Lines	12/17/2021	15:47:34	COM4	8.67	0.00	21.00	45.00	TEST LINES TO 2300 PSI
Event	8	Pump Spacer 1	Pump Spacer 1	12/17/2021	15:51:41	COM4	8.61	0.00	0.00	136.00	PUMP 10 BBLS FRESH WATER SPACER W/DYE 2 BPM 120 PSI
Event	9	Pump Cement	Pump Cement	12/17/2021	15:55:40	COM4	8.41	0.00	0.00	137.00	MIX AND PUMP 600 SKS 187 BBLS CEMENT 13.5 PPG, 1.75 GAL/SK, 9.23 GAL/SK, 8 BPM 300 PSI, CALCULATED TOC SURFACE
Event	10	Drop Top Plug	Drop Top Plug	12/17/2021	16:35:27	COM4	15.91	0.00	155.10	39.00	LAUNCH TOP PLUG
Event	11	Pump Displacement	Pump Displacement	12/17/2021	16:35:31	COM4	15.91	0.00	155.10	39.00	PUMP 129 BBLS FRESH WATER DISPLACEMENT 8 BPM 450 PSI, RECIEVED 36 BBLS CEMENT TO SURFACE
Event	12	Bump Plug	Bump Plug	12/17/2021	17:15:28	USER	8.12	2.20	101.20	601.00	BUMPED PLUG AT 600 PSI TOOK TO 1100 PSI

Event	13	Check Floats	Check Floats	12/17/2021	17:20:16	USER	8.11	0.00	102.30	1010.00	FLOATS HELD TOOK 1 BBL BACK
Event	14	End Job	End Job	12/17/2021	17:21:39	USER	8.01	0.00	102.30	36.00	STOP RECORDING DATA
Event	15	Safety Meeting - Pre Rig-Down	Safety Meeting - Pre Rig-Down	12/17/2021	17:25:00	USER	-0.39	0.00	102.30	36.00	PRE RIG DOWN SAFETY MEETING WITH ALL HES EE
Event	16	Depart Location Safety Meeting	Depart Location Safety Meeting	12/17/2021	18:30:00	USER					PRE DEPARTURE SAFETY MEETING WITH ALL HES EE
Event	17	Crew Leave Location	Crew Leave Location	12/17/2021	19:00:00	USER					THANK YOU FOR USING HALLIBURTON, KYLE BATH AND CREW

2.0 Attachments

2.1 MALLARD GREEN TEAL FED 34-27-3HN-Custom Results.png



3.0 Custom Graphs

3.1 Custom Graph

