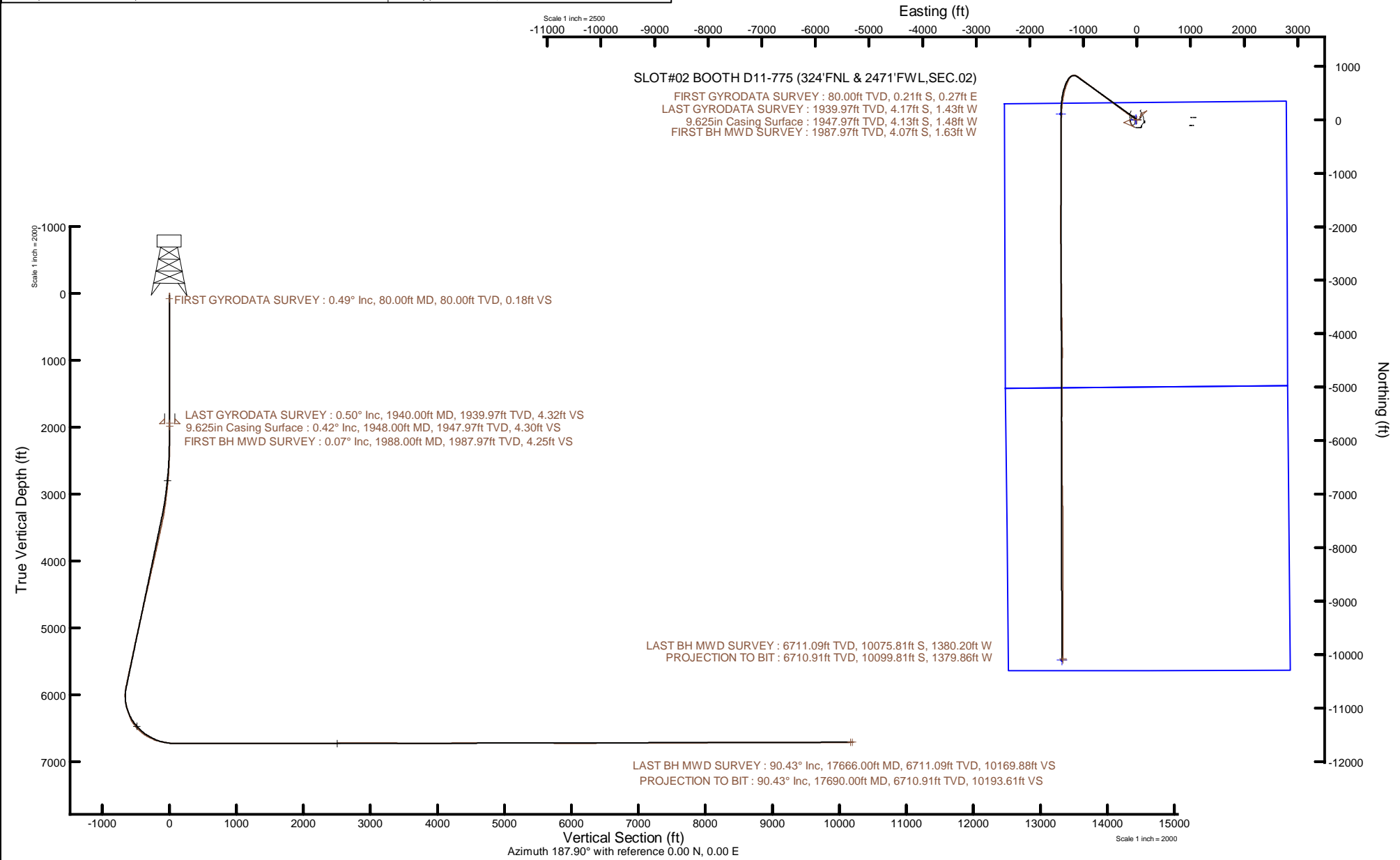


NOBLE ENERGY, INC



Location: COLORADO Slot: SLOT#02 BOOTH D11-775 (324'FNL & 2471'FWL,SEC.02)
 Field: WELD COUNTY (NOBLE NAD 83 GRID) Well: BOOTH D11-775
 Facility: SEC.02-T03N-R64W Wellbore: BOOTH D11-775 PWB

Plot reference wellpath is BOOTH D11-775 PWP Rev-A.0	Grid System: NAD83 / Lambert Colorado SP, Northern Zone (501), US feet
True vertical depths are referenced to H&P 517 (30) (KB)	North Reference: Grid north
Reference wellpath measured depths are referenced to H&P 517 (30) (KB)	Scale: True distance
H&P 517 (30) (KB) to Mean Sea Level: 4730 feet	Coordinates are in feet referenced to Slot
Mean Sea Level to Mud line (At Slot: SLOT#02 BOOTH D11-775 (324'FNL & 2471'FWL,SEC.02)): 0 feet	Depths are in feet
Offset wellpath MDs are referenced to each path's default MD datum	Created by: painsetr on 2022-01-26; Database: WellArchitectDB





Actual Wellpath Report

BOOTH D11-775 AWP

Page 1 of 7



REFERENCE WELLPATH IDENTIFICATION

Operator	NOBLE ENERGY, INC	Well	BOOTH D11-775
Field	WELD COUNTY (NOBLE NAD 83 GRID)	API	0512349026
Facility	SEC.02-T03N-R64W	Wellbore	BOOTH D11-775 AWB
Slot	SLOT#02 BOOTH D11-775 (324'FNL & 2471'FWL,SEC.02)		

REPORT SETUP INFORMATION

Projection System	NAD83 / Lambert Colorado SP, Northern Zone (501), US feet	Software System	WellArchitect® 6.0
North Reference	Grid	User	Painsetr
Scale	0.999957	Report Generated	1/26/2022 at 6:40:38 AM
Convergence at slot	0.63° East	Database	WellArchitectDB

WELLPATH LOCATION

	Local coordinates		Grid coordinates		Geographic coordinates	
	North[ft]	East[ft]	Easting[US ft]	Northing[US ft]	Latitude	Longitude
Slot Location	-0.12	22.33	3273822.38	1339388.49	40.2608620°	-104.5188260°
Facility Reference Pt			3273800.05	1339388.61	40.2608630°	-104.5189060°
Field Reference Pt			3000000.00	4454105.15	48.7761986°	-105.5000000°

WELLPATH DATUM

Calculation method	Minimum curvature	H&P 517 (30') (KB) to Facility Vertical Datum	4730.00ft
Horizontal Reference Pt	Slot	H&P 517 (30') (KB) to Mean Sea Level	4730.00ft
Vertical Reference Pt	H&P 517 (30') (KB)	H&P 517 (30') (KB) to Mud Line at Slot (SLOT#02 BOOTH D11-775 (324'FNL & 2471'FWL,SEC.02))	4730.00ft
MD Reference Pt	H&P 517 (30') (KB)	Section Origin	N 0.00, E 0.00 ft
Field Vertical Reference	Mean Sea Level	Section Azimuth	187.90°



Actual Wellpath Report

BOOTH D11-775 AWP

Page 2 of 7



REFERENCE WELLPATH IDENTIFICATION

Operator	NOBLE ENERGY, INC	Well	BOOTH D11-775
Field	WELD COUNTY (NOBLE NAD 83 GRID)	API	0512349026
Facility	SEC.02-T03N-R64W	Wellbore	BOOTH D11-775 AWB
Slot	SLOT#02 BOOTH D11-775 (324'FNL & 2471'FWL,SEC.02)		

WELLPATH DATA (187 stations)

MD [ft]	Inclination [°]	Azimuth [°]	TVD [ft]	Vert Sect [ft]	North [ft]	East [ft]	Grid East [US ft]	Grid North [US ft]	Latitude	Longitude	DLS [°/100ft]	Comments
0.00	0.000	128.890	0.00	0.00	0.00	0.00	3273822.37	1339388.49	40.2608620	-104.5188260	0.00	
80.00	0.490	128.890	80.00	0.18	-0.21	0.27	3273822.64	1339388.27	40.2608614	-104.5188251	0.61	FIRST GYRODATA SURVEY
175.00	0.300	206.120	175.00	0.62	-0.69	0.47	3273822.85	1339387.80	40.2608601	-104.5188243	0.54	
266.00	0.290	164.610	266.00	1.06	-1.13	0.43	3273822.80	1339387.36	40.2608589	-104.5188245	0.23	
360.00	0.520	188.230	359.99	1.70	-1.78	0.43	3273822.81	1339386.71	40.2608571	-104.5188245	0.30	
455.00	0.240	190.670	454.99	2.33	-2.40	0.33	3273822.71	1339386.09	40.2608554	-104.5188249	0.30	
549.00	0.400	140.960	548.99	2.75	-2.85	0.50	3273822.88	1339385.64	40.2608542	-104.5188243	0.33	
643.00	0.230	148.840	642.99	3.13	-3.27	0.81	3273823.18	1339385.22	40.2608530	-104.5188232	0.19	
738.00	0.110	210.840	737.99	3.36	-3.51	0.86	3273823.23	1339384.98	40.2608523	-104.5188231	0.21	
832.00	0.610	229.140	831.99	3.82	-3.91	0.43	3273822.81	1339384.58	40.2608512	-104.5188246	0.54	
927.00	0.250	160.820	926.98	4.38	-4.44	0.12	3273822.49	1339384.05	40.2608498	-104.5188257	0.60	
1021.00	0.220	219.460	1020.98	4.72	-4.77	0.07	3273822.45	1339383.72	40.2608489	-104.5188259	0.25	
1116.00	0.150	183.940	1115.98	5.00	-5.04	-0.05	3273822.32	1339383.45	40.2608482	-104.5188264	0.14	
1210.00	0.250	269.500	1209.98	5.15	-5.16	-0.27	3273822.11	1339383.33	40.2608478	-104.5188272	0.30	
1305.00	0.050	301.960	1304.98	5.16	-5.14	-0.51	3273821.87	1339383.35	40.2608479	-104.5188280	0.22	
1399.00	0.080	142.630	1398.98	5.19	-5.17	-0.50	3273821.87	1339383.32	40.2608478	-104.5188280	0.14	
1493.00	0.330	341.720	1492.98	5.00	-4.97	-0.55	3273821.83	1339383.52	40.2608484	-104.5188282	0.43	
1588.00	0.090	170.350	1587.98	4.82	-4.78	-0.62	3273821.75	1339383.71	40.2608489	-104.5188284	0.44	
1682.00	0.320	179.130	1681.98	5.15	-5.12	-0.60	3273821.77	1339383.37	40.2608480	-104.5188284	0.25	
1777.00	0.370	286.520	1776.98	5.37	-5.30	-0.89	3273821.48	1339383.19	40.2608475	-104.5188294	0.59	
1871.00	0.620	0.920	1870.98	4.82	-4.70	-1.18	3273821.20	1339383.79	40.2608491	-104.5188304	0.67	
1940.00	0.500	301.980	1939.97	4.32	-4.17	-1.43	3273820.95	1339384.32	40.2608506	-104.5188313	0.81	LAST GYRODATA SURVEY
1988.00	0.070	246.070	1987.97	4.25	-4.07	-1.63	3273820.74	1339384.42	40.2608509	-104.5188320	0.97	FIRST BH MWD SURVEY
2083.00	0.030	330.200	2082.97	4.27	-4.07	-1.70	3273820.68	1339384.42	40.2608509	-104.5188322	0.08	
2177.00	0.030	150.990	2176.97	4.27	-4.07	-1.70	3273820.68	1339384.42	40.2608509	-104.5188322	0.06	
2272.00	2.030	302.790	2271.95	3.58	-3.18	-3.10	3273819.28	1339385.31	40.2608534	-104.5188372	2.16	
2366.00	3.190	302.430	2365.85	1.79	-0.88	-6.71	3273815.67	1339387.61	40.2608598	-104.5188501	1.23	
2461.00	4.190	302.500	2460.66	-0.75	2.41	-11.87	3273810.51	1339390.89	40.2608690	-104.5188684	1.05	
2555.00	5.640	302.820	2554.31	-4.13	6.75	-18.64	3273803.73	1339395.24	40.2608811	-104.5188925	1.54	
2650.00	8.110	302.710	2648.62	-8.91	12.91	-28.21	3273794.17	1339401.40	40.2608983	-104.5189265	2.60	
2744.00	10.820	304.050	2741.33	-15.58	21.43	-41.10	3273781.28	1339409.92	40.2609221	-104.5189724	2.89	
2839.00	13.080	303.470	2834.26	-24.15	32.35	-57.46	3273764.92	1339420.84	40.2609525	-104.5190306	2.38	
2933.00	14.570	303.050	2925.54	-33.76	44.67	-76.24	3273746.14	1339433.16	40.2609869	-104.5190974	1.59	
3028.00	15.250	303.600	3017.34	-44.26	58.10	-96.66	3273725.72	1339446.59	40.2610244	-104.5191700	0.73	
3123.00	16.410	303.360	3108.74	-55.44	72.39	-118.28	3273704.10	1339460.88	40.2610643	-104.5192469	1.22	
3217.00	17.020	306.730	3198.77	-67.78	87.92	-140.39	3273681.99	1339476.41	40.2611076	-104.5193255	1.22	
3312.00	19.900	305.720	3288.87	-82.03	105.68	-164.67	3273657.71	1339494.17	40.2611571	-104.5194118	3.05	
3406.00	22.510	306.420	3376.50	-98.09	125.71	-192.14	3273630.24	1339514.19	40.2612129	-104.5195094	2.79	
3501.00	24.530	306.180	3463.60	-116.12	148.15	-222.70	3273599.69	1339536.63	40.2612754	-104.5196180	2.13	
3595.00	24.630	307.140	3549.08	-134.93	171.49	-254.06	3273568.33	1339559.97	40.2613404	-104.5197295	0.44	
3690.00	24.720	306.280	3635.41	-154.04	195.20	-285.85	3273536.53	1339583.68	40.2614065	-104.5198424	0.39	
3784.00	24.730	306.440	3720.79	-172.77	218.51	-317.52	3273504.87	1339606.99	40.2614714	-104.5199549	0.07	
3879.00	24.650	306.160	3807.11	-191.64	242.00	-349.50	3273472.89	1339630.48	40.2615369	-104.5200686	0.15	
3973.00	24.970	306.340	3892.43	-210.37	265.32	-381.31	3273441.09	1339653.80	40.2616018	-104.5201816	0.35	
4068.00	25.290	306.160	3978.44	-229.53	289.18	-413.84	3273408.55	1339677.66	40.2616683	-104.5202973	0.35	



Actual Wellpath Report

BOOTH D11-775 AWP

Page 3 of 7



REFERENCE WELLPATH IDENTIFICATION

Operator	NOBLE ENERGY, INC	Well	BOOTH D11-775
Field	WELD COUNTY (NOBLE NAD 83 GRID)	API	0512349026
Facility	SEC.02-T03N-R64W	Wellbore	BOOTH D11-775 AWB
Slot	SLOT#02 BOOTH D11-775 (324'FNL & 2471'FWL,SEC.02)		

WELLPATH DATA (187 stations)

MD [ft]	Inclination [°]	Azimuth [°]	TVD [ft]	Vert Sect [ft]	North [ft]	East [ft]	Grid East [US ft]	Grid North [US ft]	Latitude	Longitude	DLS [°/100ft]	Comments
4162.00	24.990	306.510	4063.53	-248.54	312.84	-446.01	3273376.38	1339701.32	40.2617342	-104.5204116	0.36	
4257.00	25.010	306.740	4149.63	-267.83	336.79	-478.23	3273344.16	1339725.27	40.2618009	-104.5205261	0.10	
4351.00	24.960	306.310	4234.84	-286.85	360.42	-510.14	3273312.26	1339748.90	40.2618668	-104.5206395	0.20	
4446.00	25.160	306.150	4320.89	-305.95	384.20	-542.60	3273279.80	1339772.68	40.2619330	-104.5207548	0.22	
4540.00	25.030	306.580	4406.02	-324.94	407.84	-574.70	3273247.70	1339796.31	40.2619989	-104.5208689	0.24	
4635.00	24.790	306.830	4492.18	-344.22	431.76	-606.78	3273215.62	1339820.23	40.2620655	-104.5209829	0.28	
4729.00	25.000	306.440	4577.45	-363.24	455.37	-638.53	3273183.87	1339843.84	40.2621313	-104.5210957	0.28	
4824.00	25.000	306.440	4663.55	-382.42	479.22	-670.83	3273151.57	1339867.69	40.2621977	-104.5212105	0.00	
4918.00	24.910	306.850	4748.77	-401.49	502.89	-702.65	3273119.75	1339891.35	40.2622636	-104.5213236	0.21	
5013.00	25.030	306.980	4834.89	-420.94	526.98	-734.72	3273087.69	1339915.44	40.2623307	-104.5214375	0.14	
5108.00	24.730	306.840	4921.07	-440.32	550.98	-766.67	3273055.74	1339939.44	40.2623976	-104.5215511	0.32	
5202.00	24.530	306.500	5006.52	-459.18	574.37	-798.10	3273024.31	1339962.84	40.2624627	-104.5216627	0.26	
5297.00	24.350	306.910	5093.01	-478.11	597.87	-829.61	3272992.80	1339986.33	40.2625282	-104.5217747	0.26	
5391.00	24.610	306.360	5178.56	-496.84	621.11	-860.86	3272961.55	1340009.57	40.2625929	-104.5218858	0.37	
5486.00	23.530	306.730	5265.30	-515.41	644.18	-891.99	3272930.42	1340032.64	40.2626572	-104.5219964	1.15	
5580.00	23.520	306.970	5351.48	-533.56	666.68	-922.02	3272900.40	1340055.14	40.2627199	-104.5221031	0.10	
5675.00	24.020	307.010	5438.43	-552.18	689.72	-952.60	3272869.82	1340078.18	40.2627840	-104.5222117	0.53	
5769.00	23.940	306.810	5524.31	-570.70	712.66	-983.15	3272839.27	1340101.12	40.2628479	-104.5223203	0.12	
5864.00	23.720	306.820	5611.21	-589.26	735.66	-1013.88	3272808.54	1340124.12	40.2629120	-104.5224295	0.23	
5958.00	23.800	306.550	5697.25	-607.50	758.29	-1044.25	3272778.17	1340146.74	40.2629750	-104.5225374	0.14	
6053.00	23.520	306.550	5784.26	-625.77	780.99	-1074.87	3272747.55	1340169.45	40.2630382	-104.5226462	0.29	
6147.00	24.230	305.990	5870.22	-643.85	803.50	-1105.55	3272716.87	1340191.95	40.2631009	-104.5227552	0.79	
6242.00	21.330	291.800	5957.86	-657.19	821.39	-1137.40	3272685.03	1340209.84	40.2631510	-104.5228686	6.52	
6336.00	21.710	270.990	6045.44	-659.20	828.04	-1170.70	3272651.73	1340216.50	40.2631703	-104.5229877	8.09	
6430.00	21.820	250.650	6132.86	-649.10	822.55	-1204.62	3272617.81	1340211.00	40.2631562	-104.5231094	7.99	
6525.00	21.700	231.460	6221.21	-628.26	805.73	-1235.05	3272587.38	1340194.19	40.2631110	-104.5232191	7.46	
6620.00	22.670	213.950	6309.27	-599.05	779.58	-1259.04	3272563.39	1340168.03	40.2630399	-104.5233061	7.01	
6714.00	30.090	203.240	6393.47	-559.97	742.82	-1278.49	3272543.94	1340131.28	40.2629396	-104.5233773	9.35	
6808.00	39.840	201.570	6470.41	-507.86	693.05	-1298.91	3272523.53	1340081.51	40.2628036	-104.5234524	10.42	
6903.00	48.080	201.290	6538.74	-443.80	631.71	-1322.97	3272499.46	1340020.17	40.2626360	-104.5235410	8.68	
6997.00	56.260	195.620	6596.37	-370.89	561.33	-1346.24	3272476.19	1339949.80	40.2624435	-104.5236272	9.92	
7092.00	63.620	191.870	6643.93	-289.16	481.52	-1365.66	3272456.77	1339869.98	40.2622250	-104.5236999	8.47	
7186.00	70.550	189.370	6680.52	-202.73	396.47	-1381.56	3272440.88	1339784.94	40.2619921	-104.5237602	7.77	
7281.00	78.350	187.460	6705.97	-111.29	306.00	-1394.91	3272427.52	1339694.48	40.2617442	-104.5238116	8.44	
7375.00	82.810	183.800	6721.35	-18.67	213.76	-1403.99	3272418.45	1339602.24	40.2614912	-104.5238478	6.10	
7470.00	90.150	182.910	6727.18	75.79	119.16	-1409.53	3272412.91	1339507.65	40.2612318	-104.5238714	7.78	
7564.00	90.000	181.010	6727.06	169.28	25.22	-1412.75	3272409.69	1339413.71	40.2609740	-104.5238866	2.03	
7659.00	89.820	181.160	6727.21	263.60	-69.76	-1414.55	3272407.89	1339318.73	40.2607134	-104.5238968	0.25	
7753.00	89.750	180.170	6727.56	356.85	-163.75	-1415.64	3272406.80	1339224.74	40.2604554	-104.5239044	1.06	
7848.00	90.460	180.230	6727.39	451.00	-258.75	-1415.97	3272406.47	1339129.75	40.2601947	-104.5239093	0.75	
7943.00	89.540	180.220	6727.39	545.14	-353.75	-1416.34	3272406.10	1339034.76	40.2599339	-104.5239144	0.97	
8037.00	89.570	180.340	6728.12	638.31	-447.75	-1416.80	3272405.64	1338940.76	40.2596759	-104.5239198	0.13	
8132.00	89.780	180.380	6728.66	732.48	-542.74	-1417.40	3272405.04	1338845.77	40.2594152	-104.5239257	0.23	
8226.00	89.970	180.330	6728.86	825.67	-636.74	-1417.98	3272404.46	1338751.78	40.2591572	-104.5239314	0.21	
8321.00	89.910	180.020	6728.96	919.81	-731.74	-1418.27	3272404.17	1338656.78	40.2588965	-104.5239362	0.33	



Actual Wellpath Report

BOOTH D11-775 AWP

Page 4 of 7



REFERENCE WELLPATH IDENTIFICATION

Operator	NOBLE ENERGY, INC	Well	BOOTH D11-775
Field	WELD COUNTY (NOBLE NAD 83 GRID)	API	0512349026
Facility	SEC.02-T03N-R64W	Wellbore	BOOTH D11-775 AWB
Slot	SLOT#02 BOOTH D11-775 (324'FNL & 2471'FWL,SEC.02)		

WELLPATH DATA (187 stations)

MD [ft]	Inclination [°]	Azimuth [°]	TVD [ft]	Vert Sect [ft]	North [ft]	East [ft]	Grid East [US ft]	Grid North [US ft]	Latitude	Longitude	DLS [°/100ft]	Comments
8415.00	89.940	180.220	6729.08	1012.94	-825.74	-1418.47	3272403.97	1338562.79	40.2586385	-104.5239406	0.22	
8510.00	91.110	180.010	6728.21	1107.06	-920.73	-1418.66	3272403.78	1338467.80	40.2583777	-104.5239451	1.25	
8604.00	89.880	180.150	6727.40	1200.18	-1014.73	-1418.79	3272403.65	1338373.81	40.2581198	-104.5239493	1.32	
8699.00	89.750	180.200	6727.71	1294.32	-1109.73	-1419.08	3272403.36	1338278.81	40.2578590	-104.5239540	0.15	
8793.00	89.910	179.260	6727.99	1387.36	-1203.72	-1418.64	3272403.80	1338184.82	40.2576010	-104.5239562	1.01	
8888.00	89.690	180.260	6728.32	1481.40	-1298.72	-1418.24	3272404.20	1338089.83	40.2573402	-104.5239585	1.08	
8982.00	89.660	180.420	6728.85	1574.58	-1392.72	-1418.80	3272403.64	1337995.83	40.2570822	-104.5239642	0.17	
9077.00	89.850	180.580	6729.26	1668.79	-1487.71	-1419.62	3272402.81	1337900.84	40.2568215	-104.5239709	0.26	
9171.00	90.090	180.750	6729.31	1762.04	-1581.71	-1420.72	3272401.72	1337806.85	40.2565636	-104.5239785	0.31	
9265.00	89.940	180.480	6729.28	1855.28	-1675.70	-1421.72	3272400.71	1337712.86	40.2563056	-104.5239858	0.33	
9360.00	89.850	180.160	6729.46	1949.45	-1770.70	-1422.25	3272400.18	1337617.87	40.2560449	-104.5239915	0.35	
9454.00	90.740	180.100	6728.97	2042.58	-1864.70	-1422.47	3272399.97	1337523.88	40.2557869	-104.5239960	0.95	
9549.00	90.550	180.770	6727.90	2136.77	-1959.69	-1423.19	3272399.25	1337428.89	40.2555262	-104.5240023	0.73	
9644.00	90.710	179.830	6726.86	2230.93	-2054.68	-1423.69	3272398.75	1337333.90	40.2552654	-104.5240078	1.00	
9738.00	90.520	179.270	6725.85	2323.92	-2148.67	-1422.95	3272399.49	1337239.92	40.2550074	-104.5240089	0.63	
9833.00	90.310	179.290	6725.16	2417.85	-2243.66	-1421.75	3272400.68	1337144.93	40.2547467	-104.5240083	0.22	
9927.00	90.430	179.590	6724.56	2510.82	-2337.65	-1420.84	3272401.60	1337050.94	40.2544886	-104.5240088	0.34	
10022.00	90.830	179.380	6723.51	2604.79	-2432.64	-1419.98	3272402.46	1336955.95	40.2542279	-104.5240094	0.48	
10116.00	91.880	179.340	6721.29	2697.72	-2526.61	-1418.93	3272403.51	1336861.99	40.2539699	-104.5240094	1.12	
10211.00	89.690	179.390	6719.99	2791.65	-2621.59	-1417.88	3272404.56	1336767.02	40.2537092	-104.5240094	2.31	
10306.00	89.170	179.420	6720.93	2885.61	-2716.58	-1416.89	3272405.55	1336672.03	40.2534484	-104.5240096	0.55	
10400.00	89.200	179.190	6722.27	2978.54	-2810.56	-1415.75	3272406.69	1336578.05	40.2531904	-104.5240092	0.25	
10495.00	89.660	179.370	6723.21	3072.46	-2905.55	-1414.56	3272407.88	1336483.07	40.2529297	-104.5240087	0.52	
10589.00	89.850	179.310	6723.62	3165.41	-2999.54	-1413.48	3272408.96	1336389.08	40.2526717	-104.5240085	0.21	
10684.00	90.030	178.750	6723.71	3259.27	-3094.53	-1411.87	3272410.57	1336294.10	40.2524109	-104.5240065	0.62	
10778.00	89.570	179.460	6724.04	3352.17	-3188.52	-1410.40	3272412.04	1336200.12	40.2521529	-104.5240049	0.90	
10873.00	89.200	179.200	6725.06	3446.10	-3283.51	-1409.29	3272413.15	1336105.13	40.2518921	-104.5240047	0.48	
10967.00	89.510	179.430	6726.12	3539.04	-3377.49	-1408.17	3272414.27	1336011.15	40.2516341	-104.5240044	0.41	
11062.00	90.340	179.530	6726.25	3633.01	-3472.49	-1407.30	3272415.13	1335916.16	40.2513733	-104.5240050	0.88	
11157.00	90.280	179.200	6725.73	3726.96	-3567.48	-1406.25	3272416.19	1335821.17	40.2511126	-104.5240050	0.35	
11251.00	89.850	179.030	6725.62	3819.86	-3661.47	-1404.80	3272417.64	1335727.19	40.2508546	-104.5240035	0.49	
11346.00	90.090	179.380	6725.67	3913.76	-3756.46	-1403.48	3272418.96	1335632.20	40.2505938	-104.5240025	0.45	
11440.00	90.220	179.410	6725.42	4006.73	-3850.45	-1402.49	3272419.95	1335538.21	40.2503358	-104.5240027	0.14	
11535.00	90.280	179.690	6725.01	4100.72	-3945.45	-1401.74	3272420.70	1335443.22	40.2500750	-104.5240038	0.30	
11629.00	90.150	179.500	6724.65	4193.73	-4039.45	-1401.08	3272421.36	1335349.23	40.2498170	-104.5240051	0.24	
11724.00	90.060	178.570	6724.48	4287.59	-4134.43	-1399.48	3272422.96	1335254.24	40.2495562	-104.5240031	0.98	
11819.00	90.280	178.400	6724.20	4381.31	-4229.40	-1396.97	3272425.47	1335159.28	40.2492955	-104.5239978	0.29	
11913.00	90.280	178.860	6723.74	4474.08	-4323.37	-1394.72	3272427.72	1335065.31	40.2490375	-104.5239935	0.49	
12008.00	91.200	181.490	6722.51	4568.20	-4418.35	-1395.01	3272427.43	1334970.34	40.2487768	-104.5239983	2.93	
12103.00	90.310	181.030	6721.26	4662.56	-4513.32	-1397.10	3272425.34	1334875.37	40.2485162	-104.5240095	1.05	
12292.00	89.690	180.050	6721.26	4849.99	-4702.31	-1398.88	3272423.56	1334686.39	40.2479975	-104.5240233	0.61	
12386.00	90.490	180.810	6721.11	4943.19	-4796.30	-1399.58	3272422.85	1334592.40	40.2477395	-104.5240296	1.17	
12481.00	90.090	179.990	6720.63	5037.38	-4891.30	-1400.25	3272422.19	1334497.41	40.2474788	-104.5240357	0.96	
12575.00	90.310	180.520	6720.30	5130.54	-4985.30	-1400.67	3272421.77	1334403.42	40.2472208	-104.5240409	0.61	
12670.00	89.450	180.480	6720.50	5224.75	-5080.29	-1401.49	3272420.94	1334308.43	40.2469601	-104.5240476	0.91	



Actual Wellpath Report

BOOTH D11-775 AWP

Page 5 of 7



REFERENCE WELLPATH IDENTIFICATION

Operator	NOBLE ENERGY, INC	Well	BOOTH D11-775
Field	WELD COUNTY (NOBLE NAD 83 GRID)	API	0512349026
Facility	SEC.02-T03N-R64W	Wellbore	BOOTH D11-775 AWB
Slot	SLOT#02 BOOTH D11-775 (324'FNL & 2471'FWL,SEC.02)		

WELLPATH DATA (187 stations)

MD [ft]	Inclination [°]	Azimuth [°]	TVD [ft]	Vert Sect [ft]	North [ft]	East [ft]	Grid East [US ft]	Grid North [US ft]	Latitude	Longitude	DLS [°/100ft]	Comments
12764.00	89.450	180.440	6721.40	5317.95	-5174.29	-1402.25	3272420.19	1334214.44	40.2467021	-104.5240540	0.04	
12859.00	89.510	180.700	6722.27	5412.17	-5269.28	-1403.19	3272419.24	1334119.45	40.2464414	-104.5240611	0.28	
13048.00	89.880	179.630	6723.27	5599.44	-5458.27	-1403.74	3272418.70	1333930.47	40.2459227	-104.5240705	0.60	
13143.00	89.230	181.090	6724.01	5693.62	-5553.26	-1404.34	3272418.10	1333835.48	40.2456619	-104.5240764	1.68	
13237.00	89.450	178.920	6725.09	5786.71	-5647.25	-1404.34	3272418.09	1333741.49	40.2454040	-104.5240802	2.32	
13321.00	89.410	179.600	6725.93	5869.75	-5731.24	-1403.26	3272419.18	1333657.51	40.2451734	-104.5240796	0.81	
13415.00	89.690	179.080	6726.67	5962.70	-5825.23	-1402.18	3272420.26	1333563.52	40.2449154	-104.5240794	0.63	
13509.00	90.220	179.670	6726.74	6055.66	-5919.22	-1401.15	3272421.29	1333469.53	40.2446573	-104.5240794	0.84	
13604.00	90.460	179.970	6726.18	6149.72	-6014.22	-1400.85	3272421.59	1333374.54	40.2443966	-104.5240821	0.40	
13793.00	90.340	179.530	6724.86	6336.80	-6203.21	-1400.03	3272422.41	1333185.56	40.2438778	-104.5240866	0.24	
13887.00	90.520	180.110	6724.15	6429.86	-6297.21	-1399.73	3272422.71	1333091.56	40.2436198	-104.5240893	0.65	
13982.00	90.740	180.370	6723.11	6524.01	-6392.20	-1400.13	3272422.31	1332996.57	40.2433591	-104.5240944	0.36	
14076.00	90.370	179.990	6722.20	6617.15	-6486.20	-1400.43	3272422.01	1332902.58	40.2431011	-104.5240992	0.56	
14171.00	89.780	179.730	6722.07	6711.22	-6581.20	-1400.19	3272422.24	1332807.59	40.2428403	-104.5241021	0.68	
14265.00	89.970	178.950	6722.28	6804.17	-6675.19	-1399.11	3272423.33	1332713.60	40.2425823	-104.5241019	0.85	
14359.00	90.150	178.510	6722.18	6896.96	-6769.17	-1397.03	3272425.41	1332619.63	40.2423243	-104.5240982	0.51	
14454.00	90.120	180.200	6721.95	6990.91	-6864.16	-1395.96	3272426.48	1332524.64	40.2420635	-104.5240981	1.78	
14548.00	89.510	177.840	6722.26	7083.77	-6958.14	-1394.35	3272428.09	1332430.67	40.2418055	-104.5240960	2.59	
14643.00	89.720	178.510	6722.90	7177.40	-7053.08	-1391.32	3272431.11	1332335.72	40.2415448	-104.5240890	0.74	
14738.00	89.910	179.140	6723.20	7271.21	-7148.06	-1389.38	3272433.06	1332240.75	40.2412841	-104.5240857	0.69	
14832.00	89.850	178.110	6723.40	7363.98	-7242.04	-1387.12	3272435.32	1332146.78	40.2410261	-104.5240813	1.10	
14927.00	90.830	178.290	6722.84	7457.62	-7336.99	-1384.14	3272438.30	1332051.84	40.2407653	-104.5240744	1.05	
15021.00	90.620	178.850	6721.65	7550.37	-7430.95	-1381.79	3272440.65	1331957.88	40.2405074	-104.5240697	0.64	
15116.00	90.430	180.570	6720.78	7644.39	-7525.94	-1381.31	3272441.13	1331862.89	40.2402466	-104.5240717	1.82	
15210.00	90.340	179.520	6720.14	7737.50	-7619.94	-1381.38	3272441.05	1331768.90	40.2399886	-104.5240757	1.12	
15304.00	90.220	179.300	6719.69	7830.47	-7713.93	-1380.42	3272442.02	1331674.91	40.2397306	-104.5240759	0.27	
15398.00	90.400	180.180	6719.18	7923.51	-7807.93	-1379.99	3272442.45	1331580.92	40.2394726	-104.5240781	0.96	
15493.00	90.800	181.100	6718.18	8017.75	-7902.91	-1381.05	3272441.39	1331485.93	40.2392119	-104.5240857	1.06	
15587.00	91.170	180.860	6716.57	8111.05	-7996.89	-1382.66	3272439.78	1331391.96	40.2389540	-104.5240951	0.47	
15682.00	90.150	179.590	6715.47	8205.19	-8091.88	-1383.03	3272439.41	1331296.98	40.2386933	-104.5241002	1.71	
15776.00	90.370	180.200	6715.05	8298.27	-8185.87	-1382.86	3272439.58	1331202.98	40.2384353	-104.5241033	0.69	
15871.00	90.150	180.790	6714.61	8392.47	-8280.87	-1383.68	3272438.76	1331107.99	40.2381746	-104.5241100	0.66	
15965.00	90.090	180.380	6714.42	8485.71	-8374.86	-1384.64	3272437.80	1331014.00	40.2379166	-104.5241171	0.44	
16060.00	90.180	180.280	6714.19	8579.88	-8469.86	-1385.19	3272437.25	1330919.01	40.2376558	-104.5241228	0.14	
16155.00	90.250	179.340	6713.84	8673.93	-8564.86	-1384.87	3272437.57	1330824.02	40.2373951	-104.5241254	0.99	
16249.00	90.740	179.920	6713.02	8766.95	-8658.85	-1384.27	3272438.17	1330730.03	40.2371371	-104.5241270	0.81	
16344.00	90.000	179.540	6712.41	8860.98	-8753.85	-1383.82	3272438.62	1330635.03	40.2368763	-104.5241291	0.88	
16438.00	90.280	180.010	6712.18	8954.03	-8847.85	-1383.45	3272438.99	1330541.04	40.2366183	-104.5241315	0.58	
16533.00	90.250	180.080	6711.74	9048.14	-8942.85	-1383.52	3272438.91	1330446.05	40.2363575	-104.5241355	0.08	
16628.00	89.970	179.700	6711.56	9142.21	-9037.85	-1383.34	3272439.10	1330351.05	40.2360968	-104.5241386	0.50	
16722.00	90.120	179.360	6711.49	9235.21	-9131.84	-1382.57	3272439.87	1330257.06	40.2358388	-104.5241395	0.40	
16817.00	89.970	179.020	6711.41	9329.11	-9226.83	-1381.23	3272441.21	1330162.07	40.2355780	-104.5241385	0.39	
16911.00	90.060	179.540	6711.39	9422.05	-9320.83	-1380.05	3272442.39	1330068.08	40.2353200	-104.5241379	0.56	
17006.00	89.850	179.770	6711.46	9516.07	-9415.82	-1379.47	3272442.96	1329973.09	40.2350592	-104.5241396	0.33	
17100.00	89.970	180.550	6711.61	9609.21	-9509.82	-1379.74	3272442.70	1329879.10	40.2348012	-104.5241443	0.84	



Actual Wellpath Report

BOOTH D11-775 AWP

Page 6 of 7



REFERENCE WELLPATH IDENTIFICATION			
Operator	NOBLE ENERGY, INC	Well	BOOTH D11-775
Field	WELD COUNTY (NOBLE NAD 83 GRID)	API	0512349026
Facility	SEC.02-T03N-R64W	Wellbore	BOOTH D11-775 AWB
Slot	SLOT#02 BOOTH D11-775 (324'FNL & 2471'FWL,SEC.02)		

WELLPATH DATA (187 stations) † = interpolated, ‡ = extrapolated station												
MD [ft]	Inclination [°]	Azimuth [°]	TVD [ft]	Vert Sect [ft]	North [ft]	East [ft]	Grid East [US ft]	Grid North [US ft]	Latitude	Longitude	DLS °/100ft	Comments
17195.00	90.120	180.480	6711.53	9703.42	-9604.82	-1380.59	3272441.85	1329784.10	40.2345405	-104.5241511	0.17	
17290.00	90.120	180.290	6711.34	9797.60	-9699.82	-1381.23	3272441.21	1329689.11	40.2342797	-104.5241571	0.20	
17384.00	89.910	180.060	6711.31	9890.75	-9793.82	-1381.51	3272440.92	1329595.12	40.2340217	-104.5241619	0.33	
17478.00	89.940	179.820	6711.43	9983.84	-9887.82	-1381.42	3272441.02	1329501.12	40.2337637	-104.5241652	0.26	
17573.00	90.030	179.750	6711.46	10077.89	-9982.82	-1381.06	3272441.38	1329406.12	40.2335030	-104.5241677	0.12	
17666.00	90.430	179.190	6711.09	10169.88	-10075.81	-1380.20	3272442.24	1329313.13	40.2332477	-104.5241683	0.74	LAST BH MWD SURVEY
17690.00‡	90.430	179.190	6710.91	10193.61	-10099.81	-1379.86	3272442.58	1329289.14	40.2331818	-104.5241680	0.00	PROJECTION TO BIT

HOLE & CASING SECTIONS - Ref Wellbore: BOOTH D11-775 AWB Ref Wellpath: BOOTH D11-775 AWP									
String/Diameter	Start MD [ft]	End MD [ft]	Interval [ft]	Start TVD [ft]	End TVD [ft]	Start N/S [ft]	Start E/W [ft]	End N/S [ft]	End E/W [ft]
9.625in Casing Surface	30.00	1948.00	1918.00	30.00	1947.97	-0.03	0.04	-4.13	-1.48

TARGETS								
Name	TVD [ft]	North [ft]	East [ft]	Grid East [US ft]	Grid North [US ft]	Latitude	Longitude	Shape
SEC.02-T03N-R64W	1.00	0.12	-22.33	3273800.05	1339388.61	40.2608630	-104.5189060	polygon
2D Polygon: dimensions not calculated								
SEC.11-T03N-R64W	1.00	0.12	-22.33	3273800.05	1339388.61	40.2608630	-104.5189060	polygon
2D Polygon: dimensions not calculated								
BOOTH D11-775 BHL REV-1 (200'FSL & 1001'FWL,SEC.11)	6710.00	-10100.01	-1402.12	3272420.32	1329288.93	40.2331819	-104.5242477	point
BOOTH D11-775 TPZ REV-1 (200'FNL & 1052'FWL,SEC.02)	6730.00	109.55	-1419.51	3272402.93	1339498.04	40.2612057	-104.5239075	point

WELLPATH COMPOSITION - Ref Wellbore: BOOTH D11-775 AWB Ref Wellpath: BOOTH D11-775 AWP						
Start MD [ft]	End MD [ft]	Positional Uncertainty Model	Log Name/Comment	Wellbore	Survey Date	
0.00	1940.00	Gyrodata 2015 - GC+DROP+COND	Gyrodata 2015 - GC+DROP+COND 13-1/2" <80 - 1940>	BOOTH D11-775 AWB	1/12/2022	
1940.00	17690.00	OWSG MWD rev2 (MS+IFR1)	OWSG MWD rev2 (MS+IFR1) 8-1/2" <1988 - 17666>	BOOTH D11-775 AWB	1/22/2022	



Actual Wellpath Report

BOOTH D11-775 AWP

Page 7 of 7



REFERENCE WELLPATH IDENTIFICATION			
Operator	NOBLE ENERGY, INC	Well	BOOTH D11-775
Field	WELD COUNTY (NOBLE NAD 83 GRID)	API	0512349026
Facility	SEC.02-T03N-R64W	Wellbore	BOOTH D11-775 AWB
Slot	SLOT#02 BOOTH D11-775 (324'FNL & 2471'FWL,SEC.02)		

WELLPATH COMMENTS					
MD [ft]	Inclination [°]	Azimuth [°]	TVD [ft]	Comment	
80.00	0.490	128.890	80.00	FIRST GYRODATA SURVEY	
1940.00	0.500	301.980	1939.97	LAST GYRODATA SURVEY	
1988.00	0.070	246.070	1987.97	FIRST BH MWD SURVEY	
17666.00	90.430	179.190	6711.09	LAST BH MWD SURVEY	
17690.00	90.430	179.190	6710.91	PROJECTION TO BIT	