



1/24/2022

Mr. Austin Lee
HSE Advisor
Kerr-McGee Oil & Gas Onshore LP
501 N Division Blvd.
Platteville, Colorado 80651

**Re: Colorado Oil & Gas Conservation Commission (COGCC)
Vegetation Assessment Report (Interim Reclamation Completion Notice)
HSR-HLADKY 11-21A (311429)
Kerr-McGee Oil & Gas Onshore LP (Operator: 47120)**

Dear Mr. Lee,

Apex Companies, LLC (Apex) is presenting this letter to Kerr-McGee Oil & Gas Onshore LP (Kerr-McGee) documenting the results of a vegetation assessment that demonstrates successful completion of interim reclamation efforts, per COGCC Rule 1003, on the above-referenced location. Attached is a topographic location map and vegetation survey site map with additional location information.

Based on site visits and the completed vegetation assessment, Apex inspectors confirmed that the drilling and construction footprint has been reduced, recontoured, and seeded with a mixture consistent with species composition and reseeding practices common to the area.

On August 31, 2021, modified step-point vegetation surveys were conducted on the reclaimed portion of the well pad and on the adjacent reference areas. Foliar and basal cover, along with non-vegetated and noxious weed occurrences, were documented; 100 survey points were recorded within the reclaimed disturbance and 100 survey points were recorded within the reference area. Vegetation survey points were identified using a bullseye target tool. The survey methodology employed by Apex is based on the *step-point method* described in an interagency technical reference published by the Bureau of Land Management (BLM, 1996).

Noxious weeds listed by the Colorado Department of Agriculture were excluded from the percent of reference vegetative coverage calculations, per COGCC Rule 1003.e (2). Disturbed areas have been kept as free of all noxious weeds as practicable, per COGCC Rule 1003.f., and any noxious species identified in the reclamation area are designated as List C. To ensure reclamation vegetative composition meets the standards of Kerr-McGee Oil & Gas Onshore LP (Kerr-McGee) and the COGCC, undesirable cover is also quantified in the attached Summary of Field Data. Undesirable cover includes species identified by the United States Department of Agriculture (USDA) Natural Resource Conservation Service (NRCS) as introduced and not native to the lower 48 states, and not considered beneficial for reclamation purposes.

Survey results indicate the reclaimed area has a foliar vegetative cover that is 100.0% of the reference area. Vegetation survey results are provided in the attached survey summary table and data sheets. Based on the results of the survey, interim reclamation, as defined by COGCC Rule 1003.e (2), has been achieved. Photographs required by COGCC Rule 1003.e (3) are also attached along with the site map illustrating vegetation survey photo points and transect locations.

Apex appreciates the opportunity to provide environmental consulting services on this project. Should you have any questions or require additional information, please do not hesitate to contact me.

Sincerely,
Apex Companies, LLC

Scott M Taylor

Scott Taylor
Environmental Scientist 2
Scott.Taylor@Apexcos.com
781-635-2420

Reviewed By:

Ken McCarron

Ken McCarron
Natural Resources Program Manager
Ken.McCarron@Apexcos.com
804-205-7737

Attachments:

1. Vegetation Survey - Summary of Field Data
2. Topographic Location Map
3. Vegetation Survey Site Map
4. Vegetation Assessment Photo Log
5. Vegetation Survey (Field Data Tables)

Vegetation Survey - Summary of Field Data

Client	Kerr-McGee Oil & Gas Onshore LP
COGCC Location Name (ID)	HSR-HLADKY 11-21A (311429)
Assessment Date	8/31/2021
Inspector Name	Aracely Rojas-Garcia

Based on the survey methodology, the foliar cover (%) in each survey area is calculated by summing the total number of foliar occurrences, excluding noxious weeds, and dividing by the total occurrences in the transects. For this location:

Reclaim Area (Foliar Cover)	Reference Area (Foliar Cover)
$(93 + 7 + 0) / 200 = 50.0\%$	$(86 + 14 + 0) / 200 = 50.0\%$

For the purposes of this assessment, the undesirable foliar cover (%) is calculated by summing the total number of undesirable* foliar occurrences and dividing by the total occurrences in the transects, excluding noxious weeds. For this location:

Reclaim Area (Undesirable Foliar Cover)	Reference Area (Undesirable Foliar Cover)
$7 / (93 + 7 + 0) = 7.0\%$	$12 / (86 + 14 + 0) = 12.0\%$

The percent of reference used to evaluate the reclamation area for compliance with COGCC Rule 1003.e(2) is calculated by dividing the foliar cover (%) in the reclaim area by the foliar cover (%) in the reference area. For this location:

Percent of Reference (Reclaim % / Reference %)
$50.0\% / 50.0\% = 100.0\%$

Reclaim Area Vegetation

Desirable Foliar Cover	46.5%
Desirable Basal Cover	46.5%
Non Vegetated	0.5%
Noxious Weeds Cover	0.0%
Undesirable Cover	6.5%
Quality Assurance Total <i>(must equal 100)</i>	100.0%
Grass (Foliar)	93
Forb (Foliar)	7
Shrubs (Foliar)	0
Noxious Weed (Foliar)	0
Grass (Basal)	88
Forb (Basal)	11
Shrubs (Basal)	0
Noxious Weed (Basal)	0
Bare Ground	1
Litter	0
Rock	0
Total Occurrences	200

Reference Area Vegetation

Desirable Foliar Cover	44.0%
Desirable Basal Cover	41.5%
Non Vegetated	0.5%
Noxious Weeds Cover	2.5%
Undesirable Cover	11.5%
Quality Assurance Total <i>(must equal 100)</i>	100.0%
Grass (Foliar)	86
Forb (Foliar)	14
Shrubs (Foliar)	0
Noxious Weed (Foliar)	0
Grass (Basal)	78
Forb (Basal)	16
Shrubs (Basal)	0
Noxious Weed (Basal)	5
Bare Ground	1
Litter	0
Rock	0
Total Occurrences	200

* Identified as introduced and non-native to Colorado by the United States Department of Agriculture Natural Resources Conservation Service.

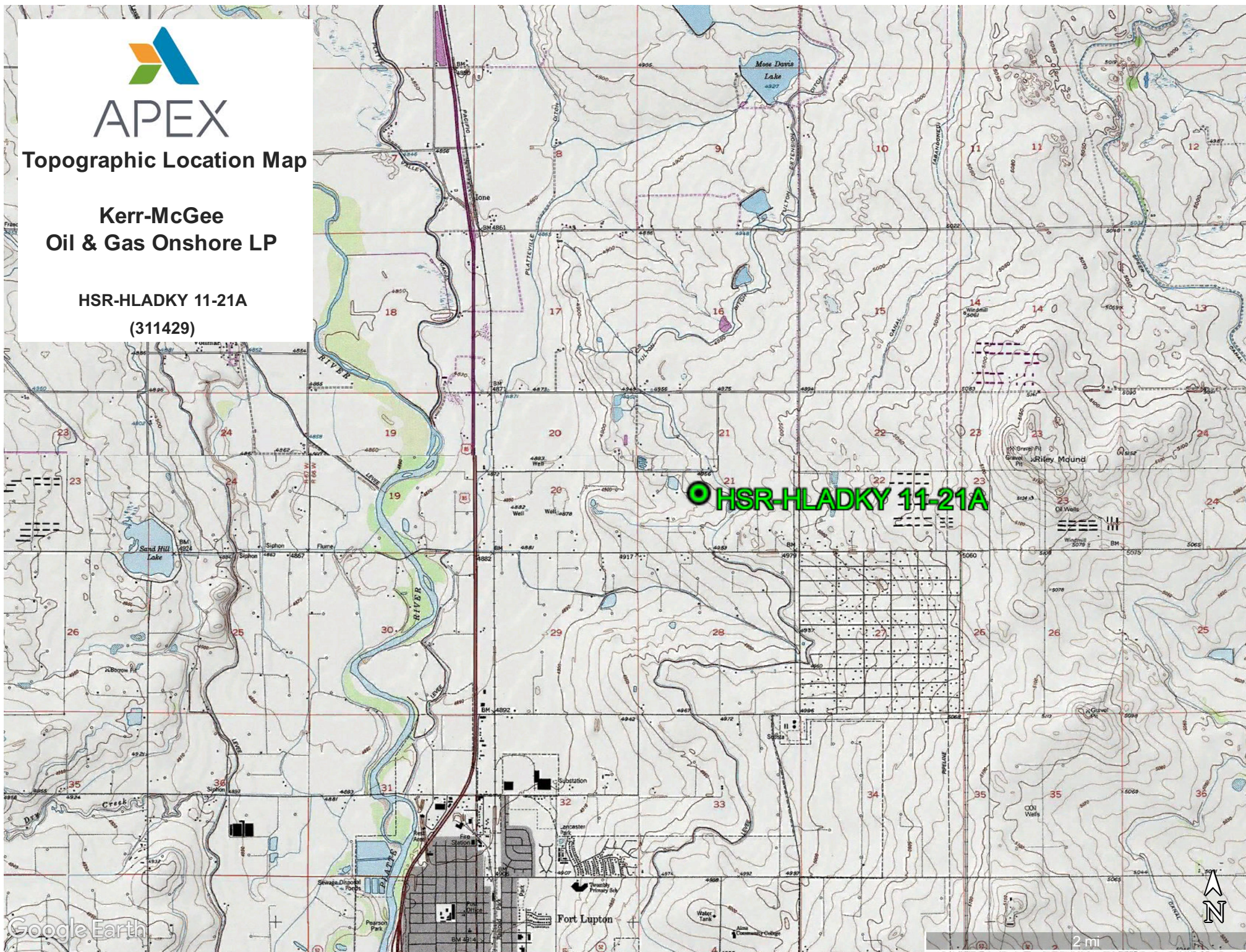


APEX

Topographic Location Map

Kerr-McGee
Oil & Gas Onshore LP

HSR-HLADKY 11-21A
(311429)



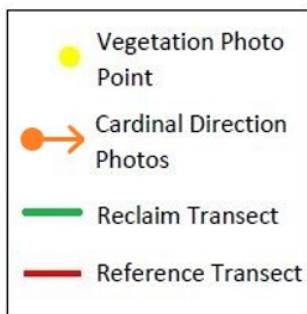


APEX

Vegetation Survey Site Map

Kerr-McGee Oil & Gas Onshore LP

HSR-HLADKY 11-21A
(311429)



Legal Description: NESW, Sec. 21, 2N-66W

Lat/Long: 40.121800 / -104.784170

County: Weld

Land Use: Non-Cropland

Reference Area Foliar Cover: 50.0%

Reclaim Area Foliar Cover: 50.0%

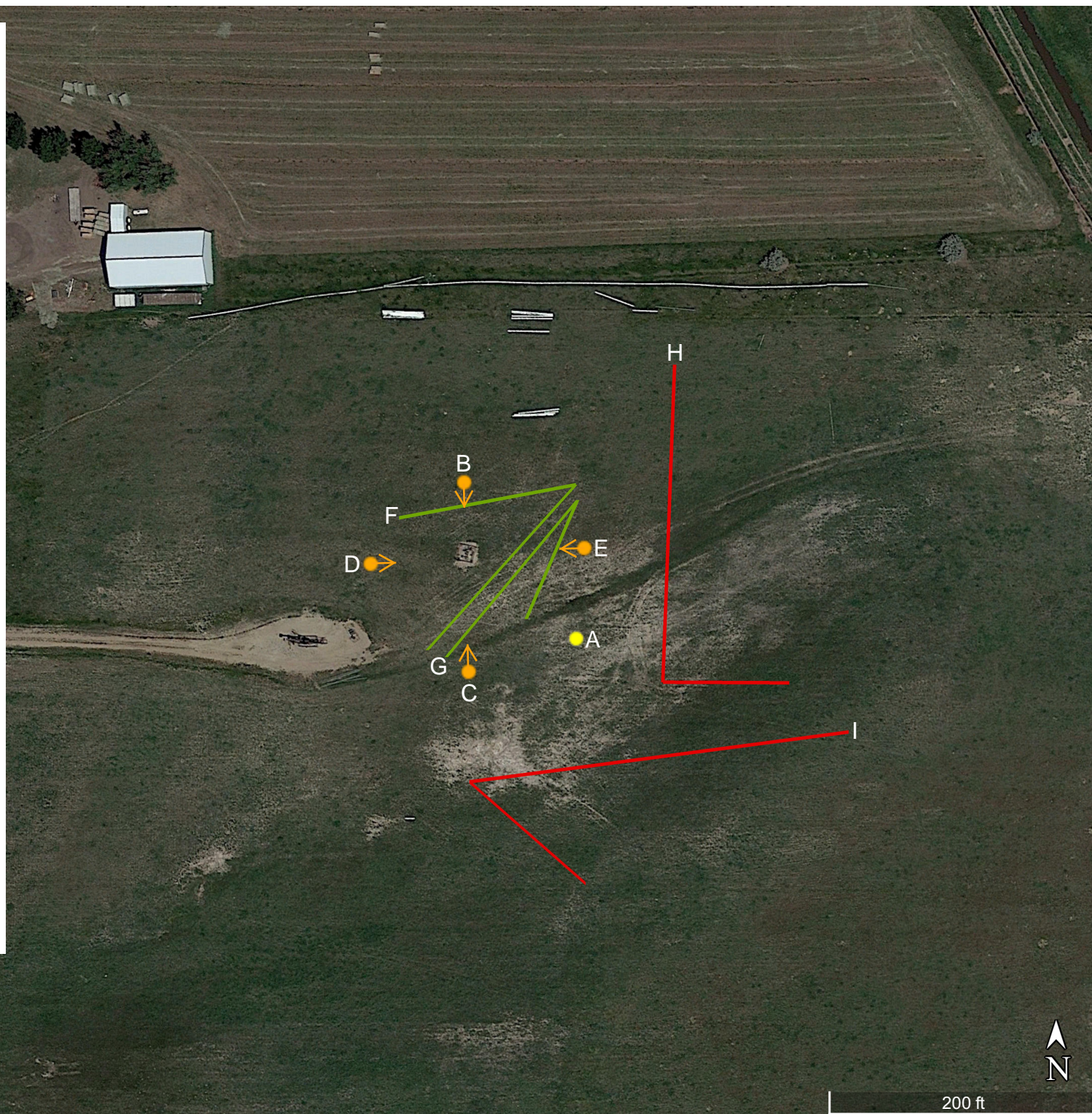
Cover Ratio (Reclaim/Reference): 100.0%

Inspector: A. Rojas-Garcia

Assessment Date: 08/31/2021

Aerial Imagery Date: 06/10/2021

**Please reference coordinate disclaimer on the photo log pages.*



Vegetation Assessment Photo Log

Date Completed - 08/31/2021

Client - **Kerr-McGee Oil & Gas Onshore LP**

Location Name (ID) - **HSR-HLADKY 11-21A (311429)**



Photo Point A: Edge of Disturbance - Facing North

*Geographic coordinates provided in the borders of all attached photos are based on points identified by the mobile phone or tablet which collected the photo. Coordinate accuracy in this format is typically no greater than 5 meters, while the points illustrated in the site diagram associated with this submittal were collected with a high accuracy GPS unit with sub-meter accuracy. Discrepancies between the site diagram and photo coordinates will exist.

Vegetation Assessment Photo Log

Date Completed - 08/31/2021

Client - **Kerr-McGee Oil & Gas Onshore LP**
Location Name (ID) - **HSR-HLADKY 11-21A (311429)**



Photo Point B: North of Disturbance - Facing South



Photo Point C: South of Disturbance - Facing North



Photo Point D: West of Disturbance - Facing East



Photo Point E: East of Disturbance - Facing West

Vegetation Assessment Photo Log

Date Completed - 08/31/2021

Client - **Kerr-McGee Oil & Gas Onshore LP**
Location Name (ID) - **HSR-HLADKY 11-21A (311429)**



Photo Point A: Reclaim Area Vegetation - Facing West

Vegetation Assessment Photo Log

Date Completed - 08/31/2021

Client - **Kerr-McGee Oil & Gas Onshore LP**
Location Name (ID) - **HSR-HLADKY 11-21A (311429)**



Photo Point F: Reclaim Transect 1 - Facing East



Photo Point G: Reclaim Transect 2 - Facing North

Vegetation Assessment Photo Log

Date Completed - 08/31/2021

Client - **Kerr-McGee Oil & Gas Onshore LP**
Location Name (ID) - **HSR-HLADKY 11-21A (311429)**



Photo Point A: Reference Area Vegetation Photo Point - Facing East

Vegetation Assessment Photo Log

Date Completed - 08/31/2021

Client - **Kerr-McGee Oil & Gas Onshore LP**
Location Name (ID) - **HSR-HLADKY 11-21A (311429)**



Photo Point H: Reference Transect 1 - Facing South



Photo Point I: Reference Transect 2 - Facing West

Vegetation Survey (Field Data Table)

Client: Kerr-McGee Oil & Gas Onshore LP
 COGCC Location Name (ID): HSR-HLADKY 11-21A (311429)
 Transect ID: Reclaim Transect 1 - Photo Point F
 Transect Length: 307 ft.
 Assessment Date: 8/31/2021
 Inspector: Aracely Rojas-Garcia

Point	Foliar	Species	Basal	Species
1	Grass	<i>Pascopyrum smithii</i> Agropyron	Grass	<i>Distichlis spicata</i>
2	Grass	<i>Buchloe dactyloides</i>	Grass	<i>Distichlis spicata</i>
3	Grass	<i>Pascopyrum smithii</i> Agropyron	Grass	<i>Distichlis spicata</i>
4	Grass	<i>Sporobolus airoides</i>	Grass	<i>Buchloe dactyloides</i>
5	Grass	<i>Sporobolus cryptandrus</i>	Grass	<i>Distichlis spicata</i>
6	Grass	<i>Pascopyrum smithii</i> Agropyron	Grass	<i>Distichlis spicata</i>
7	Grass	<i>Pascopyrum smithii</i> Agropyron	Grass	<i>Distichlis spicata</i>
8	Grass	<i>Sporobolus cryptandrus</i>	Grass	<i>Distichlis spicata</i>
9	Grass	<i>Buchloe dactyloides</i>	Grass	<i>Buchloe dactyloides</i>
10	Grass	<i>Elymus trachycaulus</i>	Grass	<i>Buchloe dactyloides</i>
11	Grass	<i>Pascopyrum smithii</i> Agropyron	Grass	<i>Distichlis spicata</i>
12	Grass	<i>Sporobolus cryptandrus</i>	Grass	<i>Buchloe dactyloides</i>
13	Grass	<i>Distichlis spicata</i>	Grass	<i>Distichlis spicata</i>
14	Grass	<i>Buchloe dactyloides</i>	Forb	<i>Polygonum aviculare</i>
15	Grass	<i>Buchloe dactyloides</i>	Grass	<i>Distichlis spicata</i>
16	Grass	<i>Pascopyrum smithii</i> Agropyron	Grass	<i>Distichlis spicata</i>
17	Grass	<i>Pascopyrum smithii</i> Agropyron	Grass	<i>Distichlis spicata</i>
18	Grass	<i>Sporobolus cryptandrus</i>	Forb	<i>Polygonum aviculare</i>
19	Grass	<i>Sporobolus cryptandrus</i>	Forb	<i>Kochia scoparia</i>
20	Grass	<i>Pascopyrum smithii</i> Agropyron	Grass	<i>Distichlis spicata</i>
21	Grass	<i>Pascopyrum smithii</i> Agropyron	Grass	<i>Buchloe dactyloides</i>
22	Grass	<i>Sporobolus cryptandrus</i>	Grass	<i>Buchloe dactyloides</i>
23	Grass	<i>Pascopyrum smithii</i> Agropyron	Grass	<i>Distichlis spicata</i>
24	Forb	<i>Kochia scoparia</i>	Grass	<i>Distichlis spicata</i>
25	Grass	<i>Pascopyrum smithii</i> Agropyron	Grass	<i>Buchloe dactyloides</i>
26	Grass	<i>Buchloe dactyloides</i>	Grass	<i>Buchloe dactyloides</i>
27	Grass	<i>Pascopyrum smithii</i> Agropyron	Grass	<i>Buchloe dactyloides</i>
28	Grass	<i>Buchloe dactyloides</i>	Grass	<i>Buchloe dactyloides</i>
29	Forb	<i>Chenopodium album</i>	Grass	<i>Buchloe dactyloides</i>
30	Grass	<i>Pascopyrum smithii</i> Agropyron	Forb	<i>Kochia scoparia</i>
31	Forb	<i>Kochia scoparia</i>	Grass	<i>Distichlis spicata</i>
32	Forb	<i>Kochia scoparia</i>	Grass	<i>Distichlis spicata</i>
33	Grass	<i>Pascopyrum smithii</i> Agropyron	Grass	<i>Distichlis spicata</i>
34	Grass	<i>Sporobolus cryptandrus</i>	Grass	<i>Distichlis spicata</i>
35	Grass	<i>Distichlis spicata</i>	Grass	<i>Distichlis spicata</i>
36	Grass	<i>Pascopyrum smithii</i> Agropyron	Grass	<i>Distichlis spicata</i>
37	Grass	<i>Pascopyrum smithii</i> Agropyron	Grass	<i>Distichlis spicata</i>
38	Grass	<i>Distichlis spicata</i>	Grass	<i>Distichlis spicata</i>
39	Grass	<i>Distichlis spicata</i>	Grass	<i>Distichlis spicata</i>
40	Grass	<i>Pascopyrum smithii</i> Agropyron	Grass	<i>Distichlis spicata</i>
41	Grass	<i>Distichlis spicata</i>	Non Vegetative	Bare Ground
42	Grass	<i>Bromus inermis</i>	Grass	<i>Bromus inermis</i>
43	Grass	<i>Pascopyrum smithii</i> Agropyron	Grass	<i>Buchloe dactyloides</i>
44	Grass	<i>Pascopyrum smithii</i> Agropyron	Grass	<i>Sporobolus airoides</i>
45	Grass	<i>Critesion jubatum</i>	Grass	<i>Sporobolus cryptandrus</i>
46	Grass	<i>Sporobolus airoides</i>	Grass	<i>Distichlis spicata</i>
47	Forb	<i>Xanthium strumarium</i>	Grass	<i>Distichlis spicata</i>
48	Grass	<i>Elymus trachycaulus</i>	Forb	<i>Xanthium strumarium</i>
49	Grass	<i>Sporobolus airoides</i>	Grass	<i>Pascopyrum smithii</i> Agropyron
50	Grass	<i>Pascopyrum smithii</i> Agropyron	Grass	<i>Elymus L</i>

Vegetation Survey (Field Data Table)

Client: Kerr-McGee Oil & Gas Onshore LP
 COGCC Location Name (ID): HSR-HLADKY 11-21A (311429)
 Transect ID: Reclaim Transect 2 - Photo Point G
 Transect Length: 259 ft.
 Assessment Date: 8/31/2021
 Inspector: Aracely Rojas-Garcia

Point	Foliar	Species	Basal	Species
1	Grass	<i>Pascopyrum smithii</i> Agropyron	Grass	<i>Distichlis spicata</i>
2	Grass	<i>Sporobolus airoides</i>	Forb	<i>Purslane</i>
3	Grass	<i>Elymus trachycaulus</i>	Forb	<i>Xanthium strumarium</i>
4	Grass	<i>Sporobolus airoides</i>	Forb	<i>Chamomile</i>
5	Grass	<i>Elymus trachycaulus</i>	Forb	<i>Xanthium strumarium</i>
6	Grass	<i>Elymus trachycaulus</i>	Grass	<i>Elymus L</i>
7	Grass	<i>Critesion jubatum</i>	Grass	<i>Buchloe dactyloides</i>
8	Grass	<i>Pascopyrum smithii</i> Agropyron	Grass	<i>Distichlis spicata</i>
9	Grass	<i>Pascopyrum smithii</i> Agropyron	Grass	<i>Distichlis spicata</i>
10	Grass	<i>Buchloe dactyloides</i>	Grass	<i>Distichlis spicata</i>
11	Grass	<i>Pascopyrum smithii</i> Agropyron	Grass	<i>Distichlis spicata</i>
12	Grass	<i>Pascopyrum smithii</i> Agropyron	Grass	<i>Distichlis spicata</i>
13	Grass	<i>Pascopyrum smithii</i> Agropyron	Grass	<i>Pascopyrum smithii</i> Agropyron
14	Grass	<i>Distichlis spicata</i>	Grass	<i>Distichlis spicata</i>
15	Grass	<i>Pascopyrum smithii</i> Agropyron	Grass	<i>Distichlis spicata</i>
16	Grass	<i>Critesion jubatum</i>	Grass	<i>Distichlis spicata</i>
17	Grass	<i>Pascopyrum smithii</i> Agropyron	Grass	<i>Distichlis spicata</i>
18	Grass	<i>Sporobolus cryptandrus</i>	Grass	<i>Distichlis spicata</i>
19	Grass	<i>Distichlis spicata</i>	Forb	<i>Polygonum aviculare</i>
20	Grass	<i>Pascopyrum smithii</i> Agropyron	Grass	<i>Distichlis spicata</i>
21	Grass	<i>Sporobolus cryptandrus</i>	Grass	<i>Distichlis spicata</i>
22	Grass	<i>Pascopyrum smithii</i> Agropyron	Forb	<i>Kochia scoparia</i>
23	Grass	<i>Pascopyrum smithii</i> Agropyron	Grass	<i>Distichlis spicata</i>
24	Grass	<i>Sporobolus cryptandrus</i>	Grass	<i>Distichlis spicata</i>
25	Grass	<i>Pascopyrum smithii</i> Agropyron	Grass	<i>Distichlis spicata</i>
26	Grass	<i>Buchloe dactyloides</i>	Grass	<i>Distichlis spicata</i>
27	Grass	<i>Pascopyrum smithii</i> Agropyron	Grass	<i>Distichlis spicata</i>
28	Grass	<i>Buchloe dactyloides</i>	Grass	<i>Distichlis spicata</i>
29	Grass	<i>Critesion jubatum</i>	Grass	<i>Distichlis spicata</i>
30	Grass	<i>Pascopyrum smithii</i> Agropyron	Grass	<i>Pascopyrum smithii</i> Agropyron
31	Grass	<i>Pascopyrum smithii</i> Agropyron	Grass	<i>Distichlis spicata</i>
32	Grass	<i>Sporobolus airoides</i>	Grass	<i>Sporobolus cryptandrus</i>
33	Forb	<i>Kochia scoparia</i>	Grass	<i>Distichlis spicata</i>
34	Grass	<i>Distichlis spicata</i>	Grass	<i>Distichlis spicata</i>
35	Grass	<i>Distichlis spicata</i>	Grass	<i>Distichlis spicata</i>
36	Grass	<i>Buchloe dactyloides</i>	Grass	<i>Distichlis spicata</i>
37	Grass	<i>Pascopyrum smithii</i> Agropyron	Grass	<i>Buchloe dactyloides</i>
38	Grass	<i>Pascopyrum smithii</i> Agropyron	Grass	<i>Pascopyrum smithii</i> Agropyron
39	Grass	<i>Distichlis spicata</i>	Grass	<i>Distichlis spicata</i>
40	Forb	<i>Kochia scoparia</i>	Grass	<i>Distichlis spicata</i>
41	Grass	<i>Pascopyrum smithii</i> Agropyron	Grass	<i>Distichlis spicata</i>
42	Grass	<i>Juncus balticus</i>	Grass	<i>Distichlis spicata</i>
43	Grass	<i>Pascopyrum smithii</i> Agropyron	Grass	<i>Critesion jubatum</i>
44	Grass	<i>Juncus balticus</i>	Grass	<i>Distichlis spicata</i>
45	Grass	<i>Juncus balticus</i>	Grass	<i>Sporobolus cryptandrus</i>
46	Grass	<i>Pascopyrum smithii</i> Agropyron	Grass	<i>Distichlis spicata</i>
47	Grass	<i>Distichlis spicata</i>	Grass	<i>Distichlis spicata</i>
48	Grass	<i>Pascopyrum smithii</i> Agropyron	Grass	<i>Distichlis spicata</i>
49	Grass	<i>Critesion jubatum</i>	Grass	<i>Buchloe dactyloides</i>
50	Grass	<i>Pascopyrum smithii</i> Agropyron	Grass	<i>Distichlis spicata</i>

Vegetation Survey (Field Data Table)

Client: Kerr-McGee Oil & Gas Onshore LP
 COGCC Location Name (ID): HSR-HLADKY 11-21A (311429)
 Transect ID: Reference Transect 1 - Photo Point H
 Transect Length: 331 ft.
 Assessment Date: 8/31/2021
 Inspector: Aracely Rojas-Garcia

Point	Foliar	Species	Basal	Species
1	Grass	<i>Pascopyrum smithii</i> Agropyron	Grass	<i>Sporobolus cryptandrus</i>
2	Grass	<i>Sporobolus cryptandrus</i>	Forb	<i>Taraxacum officinale</i>
3	Grass	<i>Pascopyrum smithii</i> Agropyron	Grass	<i>Distichlis spicata</i>
4	Forb	<i>Conyza canadensis</i>	Grass	<i>Buchloe dactyloides</i>
5	Grass	<i>Pascopyrum smithii</i> Agropyron	Grass	<i>Sporobolus cryptandrus</i>
6	Grass	<i>Critesion jubatum</i>	Forb	<i>Melilotus officinalis</i>
7	Grass	<i>Pascopyrum smithii</i> Agropyron	Grass	<i>Buchloe dactyloides</i>
8	Grass	<i>Bromus inermis</i>	Grass	<i>Sporobolus cryptandrus</i>
9	Grass	<i>Pascopyrum smithii</i> Agropyron	Grass	<i>Distichlis spicata</i>
10	Forb	<i>Conyza canadensis</i>	Grass	<i>Critesion jubatum</i>
11	Grass	<i>Pascopyrum smithii</i> Agropyron	Forb	<i>Kochia scoparia</i>
12	Grass	<i>Pascopyrum smithii</i> Agropyron	Grass	<i>Elymus L</i>
13	Grass	<i>Pascopyrum smithii</i> Agropyron	Noxious Weed C	<i>Convolvulus arvensis</i>
14	Grass	<i>Elymus trachycaulus</i>	Noxious Weed C	<i>Convolvulus arvensis</i>
15	Grass	<i>Critesion jubatum</i>	Noxious Weed C	<i>Convolvulus arvensis</i>
16	Grass	<i>Elymus trachycaulus</i>	Grass	<i>Buchloe dactyloides</i>
17	Grass	<i>Pascopyrum smithii</i> Agropyron	Grass	<i>Buchloe dactyloides</i>
18	Grass	<i>Dactylis glomerata</i>	Noxious Weed C	<i>Convolvulus arvensis</i>
19	Grass	<i>Pascopyrum smithii</i> Agropyron	Grass	<i>Pascopyrum smithii</i> Agropyron
20	Grass	<i>Sporobolus airoides</i>	Noxious Weed C	<i>Convolvulus arvensis</i>
21	Grass	<i>Dactylis glomerata</i>	Grass	<i>Pascopyrum smithii</i> Agropyron
22	Grass	<i>Elymus trachycaulus</i>	Grass	<i>Sporobolus airoides</i>
23	Grass	<i>Sporobolus cryptandrus</i>	Grass	<i>Distichlis spicata</i>
24	Grass	<i>Pascopyrum smithii</i> Agropyron	Grass	<i>Dactylis glomerata</i>
25	Grass	<i>Elymus trachycaulus</i>	Forb	<i>Ambrosia psilostachya</i>
26	Grass	<i>Critesion jubatum</i>	Grass	<i>Sporobolus cryptandrus</i>
27	Grass	<i>Elymus trachycaulus</i>	Grass	<i>Distichlis spicata</i>
28	Grass	<i>Sporobolus airoides</i>	Grass	<i>Buchloe dactyloides</i>
29	Grass	<i>Critesion jubatum</i>	Grass	<i>Distichlis spicata</i>
30	Grass	<i>Pascopyrum smithii</i> Agropyron	Forb	<i>Kochia scoparia</i>
31	Grass	<i>Sporobolus cryptandrus</i>	Grass	<i>Distichlis spicata</i>
32	Grass	<i>Elymus trachycaulus</i>	Grass	<i>Distichlis spicata</i>
33	Grass	<i>Critesion jubatum</i>	Grass	<i>Distichlis spicata</i>
34	Grass	<i>Elymus trachycaulus</i>	Grass	<i>Distichlis spicata</i>
35	Forb	<i>Kochia scoparia</i>	Grass	<i>Distichlis spicata</i>
36	Forb	<i>Kochia scoparia</i>	Grass	<i>Distichlis spicata</i>
37	Forb	<i>Kochia scoparia</i>	Grass	<i>Distichlis spicata</i>
38	Grass	<i>Distichlis spicata</i>	Grass	<i>Distichlis spicata</i>
39	Grass	<i>Pascopyrum smithii</i> Agropyron	Grass	<i>Distichlis spicata</i>
40	Forb	<i>Kochia scoparia</i>	Grass	<i>Distichlis spicata</i>
41	Forb	<i>Kochia scoparia</i>	Grass	<i>Distichlis spicata</i>
42	Grass	<i>Juncus balticus</i>	Grass	<i>Distichlis spicata</i>
43	Grass	<i>Pascopyrum smithii</i> Agropyron	Grass	<i>Distichlis spicata</i>
44	Grass	<i>Pascopyrum smithii</i> Agropyron	Grass	<i>Distichlis spicata</i>
45	Grass	<i>Sporobolus cryptandrus</i>	Grass	<i>Distichlis spicata</i>
46	Forb	<i>Kochia scoparia</i>	Grass	<i>Distichlis spicata</i>
47	Grass	<i>Sporobolus cryptandrus</i>	Grass	<i>Distichlis spicata</i>
48	Grass	<i>Juncus balticus</i>	Grass	<i>Distichlis spicata</i>
49	Grass	<i>Sporobolus cryptandrus</i>	Grass	<i>Distichlis spicata</i>
50	Grass	<i>Distichlis spicata</i>	Grass	<i>Distichlis spicata</i>

Vegetation Survey (Field Data Table)

Client: Kerr-McGee Oil & Gas Onshore LP
 COGCC Location Name (ID): HSR-HLADKY 11-21A (311429)
 Transect ID: Reference Transect 2 - Photo Point I
 Transect Length: 401 ft.
 Assessment Date: 8/31/2021
 Inspector: Aracely Rojas-Garcia

Point	Foliar	Species	Basal	Species
1	Grass	<i>Elymus trachycaulus</i>	Grass	<i>Pascopyrum smithii</i> Agropyron
2	Grass	<i>Pascopyrum smithii</i> Agropyron	Forb	<i>Taraxacum officinale</i>
3	Grass	<i>Critesion jubatum</i>	Forb	<i>Polygonum aviculare</i>
4	Grass	<i>Elymus trachycaulus</i>	Grass	<i>Elymus trachycaulus</i>
5	Grass	<i>Sporobolus airoides</i>	Forb	<i>Kochia scoparia</i>
6	Grass	<i>Pascopyrum smithii</i> Agropyron	Forb	<i>Xanthium strumarium</i>
7	Grass	<i>Pascopyrum smithii</i> Agropyron	Grass	<i>Pascopyrum smithii</i> Agropyron
8	Grass	<i>Elymus trachycaulus</i>	Forb	<i>Melilotus officinalis</i>
9	Grass	<i>Pascopyrum smithii</i> Agropyron	Grass	<i>Sporobolus cryptandrus</i>
10	Grass	<i>Critesion jubatum</i>	Grass	<i>Sporobolus cryptandrus</i>
11	Grass	<i>Pascopyrum smithii</i> Agropyron	Grass	<i>Pascopyrum smithii</i> Agropyron
12	Grass	<i>Sporobolus cryptandrus</i>	Grass	<i>Sporobolus cryptandrus</i>
13	Grass	<i>Sporobolus cryptandrus</i>	Grass	<i>Distichlis spicata</i>
14	Grass	<i>Critesion jubatum</i>	Grass	<i>Sporobolus cryptandrus</i>
15	Grass	<i>Pascopyrum smithii</i> Agropyron	Grass	<i>Distichlis spicata</i>
16	Grass	<i>Elymus trachycaulus</i>	Grass	<i>Distichlis spicata</i>
17	Grass	<i>Sporobolus cryptandrus</i>	Grass	<i>Distichlis spicata</i>
18	Grass	<i>Distichlis spicata</i>	Forb	<i>Melilotus officinalis</i>
19	Grass	<i>Critesion jubatum</i>	Grass	<i>Distichlis spicata</i>
20	Grass	<i>Sporobolus cryptandrus</i>	Forb	<i>Kochia scoparia</i>
21	Grass	<i>Pascopyrum smithii</i> Agropyron	Grass	<i>Sporobolus cryptandrus</i>
22	Grass	<i>Elymus trachycaulus</i>	Grass	<i>Sporobolus cryptandrus</i>
23	Grass	<i>Elymus trachycaulus</i>	Grass	<i>Distichlis spicata</i>
24	Grass	<i>Critesion jubatum</i>	Grass	<i>Sporobolus cryptandrus</i>
25	Grass	<i>Sporobolus cryptandrus</i>	Grass	<i>Distichlis spicata</i>
26	Grass	<i>Elymus trachycaulus</i>	Grass	<i>Pascopyrum smithii</i> Agropyron
27	Grass	<i>Elymus trachycaulus</i>	Grass	<i>Sporobolus cryptandrus</i>
28	Grass	<i>Critesion jubatum</i>	Grass	<i>Pascopyrum smithii</i> Agropyron
29	Grass	<i>Sporobolus cryptandrus</i>	Forb	<i>Polygonum aviculare</i>
30	Grass	<i>Sporobolus airoides</i>	Forb	<i>Polygonum aviculare</i>
31	Grass	<i>Pascopyrum smithii</i> Agropyron	Grass	<i>Distichlis spicata</i>
32	Grass	<i>Sporobolus cryptandrus</i>	Grass	<i>Distichlis spicata</i>
33	Grass	<i>Buchloe dactyloides</i>	Grass	<i>Distichlis spicata</i>
34	Forb	<i>Kochia scoparia</i>	Grass	<i>Distichlis spicata</i>
35	Grass	<i>Critesion jubatum</i>	Grass	<i>Distichlis spicata</i>
36	Grass	<i>Critesion jubatum</i>	Grass	<i>Distichlis spicata</i>
37	Grass	<i>Critesion jubatum</i>	Forb	<i>Polygonum aviculare</i>
38	Forb	<i>Kochia scoparia</i>	Grass	<i>Distichlis spicata</i>
39	Forb	<i>Kochia scoparia</i>	Forb	<i>Kochia scoparia</i>
40	Forb	<i>Kochia scoparia</i>	Grass	<i>Distichlis spicata</i>
41	Forb	<i>Kochia scoparia</i>	Non Vegetative	Bare Ground
42	Forb	<i>Kochia scoparia</i>	Grass	<i>Distichlis spicata</i>
43	Grass	<i>Critesion jubatum</i>	Grass	<i>Distichlis spicata</i>
44	Grass	<i>Critesion jubatum</i>	Grass	<i>Pascopyrum smithii</i> Agropyron
45	Grass	<i>Critesion jubatum</i>	Grass	<i>Distichlis spicata</i>
46	Grass	<i>Elymus trachycaulus</i>	Grass	<i>Distichlis spicata</i>
47	Grass	<i>Pascopyrum smithii</i> Agropyron	Grass	<i>Distichlis spicata</i>
48	Grass	<i>Elymus trachycaulus</i>	Grass	<i>Sporobolus cryptandrus</i>
49	Grass	<i>Elymus trachycaulus</i>	Grass	<i>Sporobolus cryptandrus</i>
50	Grass	<i>Elymus trachycaulus</i>	Grass	<i>Critesion jubatum</i>