

Duncan 2-5
 523' FNL, 921' FWL, SEC 20 T12N R100W
 Moffat County, CO
 API:05-081-07141

Updated 19 Sep 2011, TBWI

GL @ 6827'
 KB @ 6841'
 COMPLETION DATE: 1/09/2004

SURFACE CASING

8-5/8" 24# J-55
 SET @ 868' GL
 CMT w/ 600 sx
 Circ. 34 bbl cmt to surface

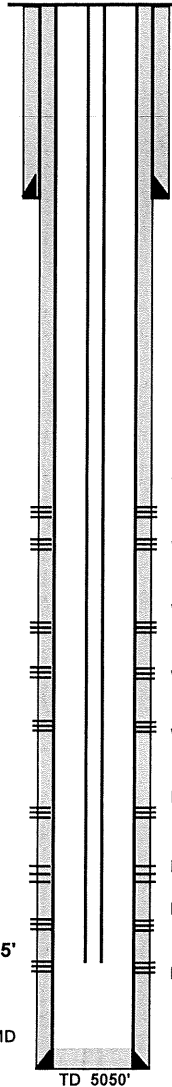
PROD. CASING

5 1/2", 17#, L-80
 SET @ 5050'
 CMT w/ 670 sx
 Circ cmt to surface

Qty	Item	Length (ft)	Bottom Depth (ft)
1	ORKB	14.00	14.0
1	2-3/8" Tbg Hgr	0.90	14.9
95	2-3/8", 4.7#, N-80, API 8-rd tbg	3,000.12	3,015.0
1	2-3/8" API 8-rd x Buttress x-over	0.77	3,015.8
56	2-3/8", 4.7#, L-80, TKC 150 Flush jt tbg	1,677.17	4,693.0
1	2-3/8" BTC x API 8-rd x-over	0.84	4,693.8
1	XN' nipple	1.04	4,694.8
1	WLEG (EOT)	0.33	4,695.2

EOT = 4,695'

PBTD @ 4,830' MD



Hole size: 12-1/4"

Hole size: 7-7/8"

Wasatch A-11a perfs: 3019' - 3022', 3 jet holes @ 120 deg
 frac'd w/ 221 bbl fluid (Guar gel), 65-Q N2, & 26,700# 20/40 sand

Wasatch A-11b perfs: 3080' - 3083', 3 jet holes @ 120 deg
 frac'd w/ 341 bbl fluid (Guar gel), 65-Q N2, & 27,000# 20/40 sand

Wasatch A-12 perfs: 3337' - 3340', 3 jet holes @ 120 deg
 frac'd w/ 445 bbl fluid (Guar gel), 65-Q N2, & 54,000# 20/40 sand

Wasatch A-13 perfs: 3410'-3413', 3 jet holes @ 120 deg
 frac'd w/ 499 bbl fluid (Guar gel), 65-Q N2, & 100,000# 20/40 sand

Wasatch A-15 perfs: 3610'-3613', 3 jet holes @ 120 deg
 frac'd w/ 328 bbl fluid (Guar gel), 65-Q N2, & 65,000# 20/40 sand

Ft. Union B1 perfs: 4084' - 4087', 3 jet holes @ 120 deg
 Not frac'd, could not break down the perfs

Ft. Union B2a perfs: 4183'-4186', 3 jet holes @ 120 deg
 frac'd w/ 395 bbl liquid (Guar gel), 65-Q N2, & 52,000# 20/40 sand

Ft. Union B2b perfs: 4320'-4323', 3 jet holes @ 120 deg
 frac'd w/ 440 bbl liquid (Guar gel), 65-Q N2, & 45,100 # 20/40 sand

Lewis perfs: 4710' - 4713', 3 jet holes @ 120 deg
 Frac'd with 748 bbl (guar gel), 65-Q N2, 129,000 # 20/40 sand

TD 5050'