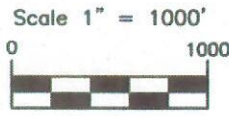
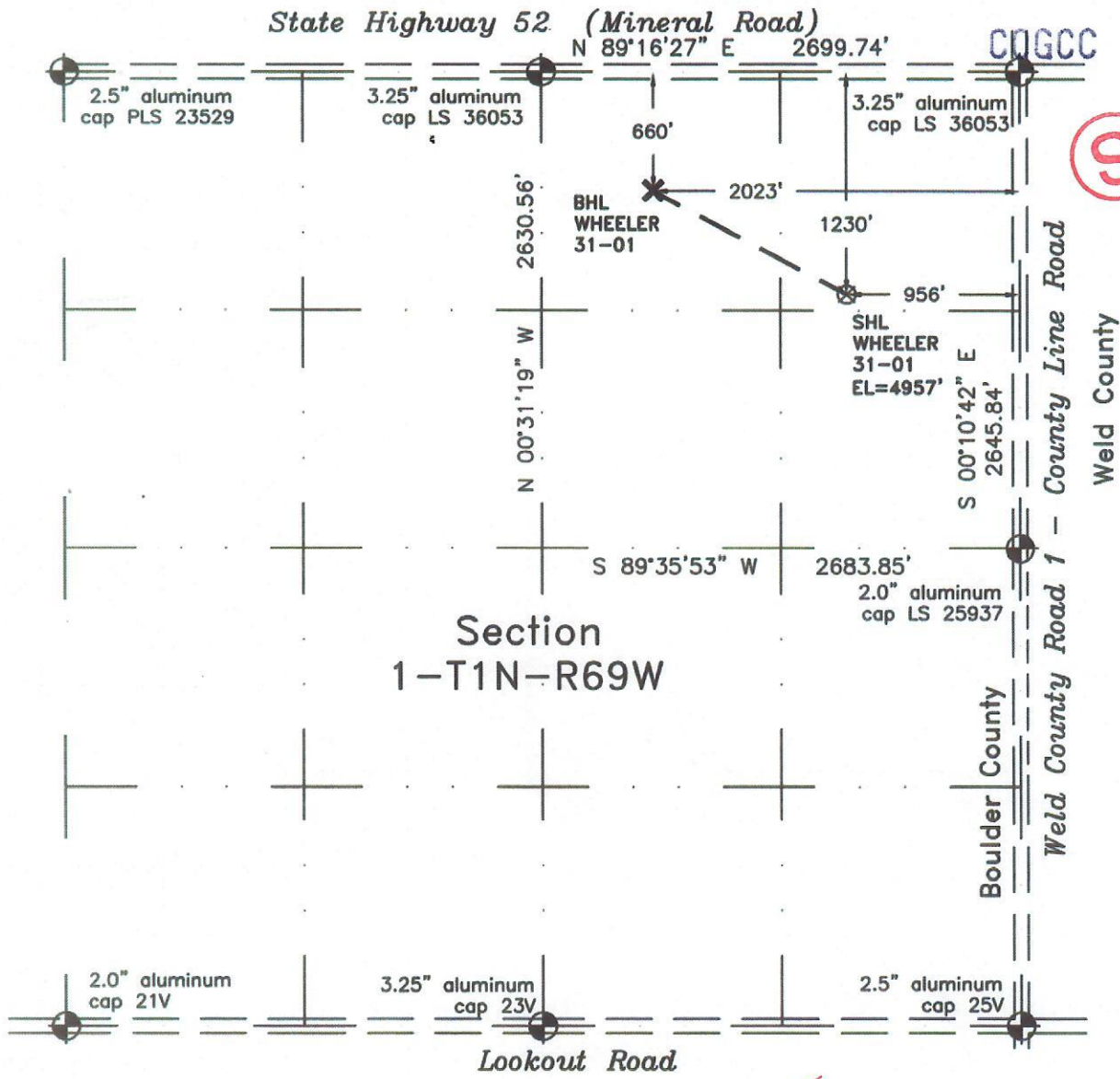




WELL LOCATION CERTIFICATE

THIS MAP DOES NOT REPRESENT A BOUNDARY SURVEY

RECEIVED
JUN 28 06



In accordance with a request from Peter Scott of EnCana Oil & Gas (USA) Inc., Frederick Land Surveying, Inc. has determined the location of the WHEELER 31-01 well site to be SHL 956' & BHL 2023' FEL and SHL 1230' & BHL 660' FNL as measured at ninety (90) degrees from the section lines of Section 1, Township 1 North, Range 69 West of the 6th Principal Meridian, Boulder County, Colorado.

Proposed Surface Hole Data:
 Latitude: N (SHL) 40.08414°; (BHL) 40.08569°
 Longitude: W (SHL) 105.05884°; (BHL) 105.06265°
 Nearest Building, Public Road, Above Ground Utility, or Railroad: 460'
 Nearest Property Line: 950'
 RDOP=2.374

- LEGEND**
- found survey monument
 - improved road
 - calculated dimension

- Notes:**
- 1) Basis of Bearings based upon NAD 83 Colorado North State Plane Coordinates using GPS observations taken on 02/08/2006 by GPS operator Jay Knutson.
 - 2) Elevations based upon GPS observed heights and the Geoid 2003 corrections.
 - 3) There are no improvements other than an existing well head within 200 feet.
 - 4) The location falls in an agricultural field.

I hereby certify that this Well Location Certificate was prepared by me or under my direct supervision on 02/13/2006 for and on behalf of EnCana Oil & Gas (USA) Inc. That it is not a Land Survey Plat or an Improvement Survey Plat and that it is not to be relied upon for establishment of fences, buildings, or other future improvement lines.
 dated: 02/13/06 revised: 04/27/06

NOTICE: According to Colorado law you MUST commence any legal action based upon any defect in this W.L.C. within three years after you first discover such defect. In no event may any action based upon any defect in this W.L.C. be commenced more than ten years from this said date of the certification shown hereon.

M. Bryan Short Colorado PLS 32448
 Job #: 06009001