



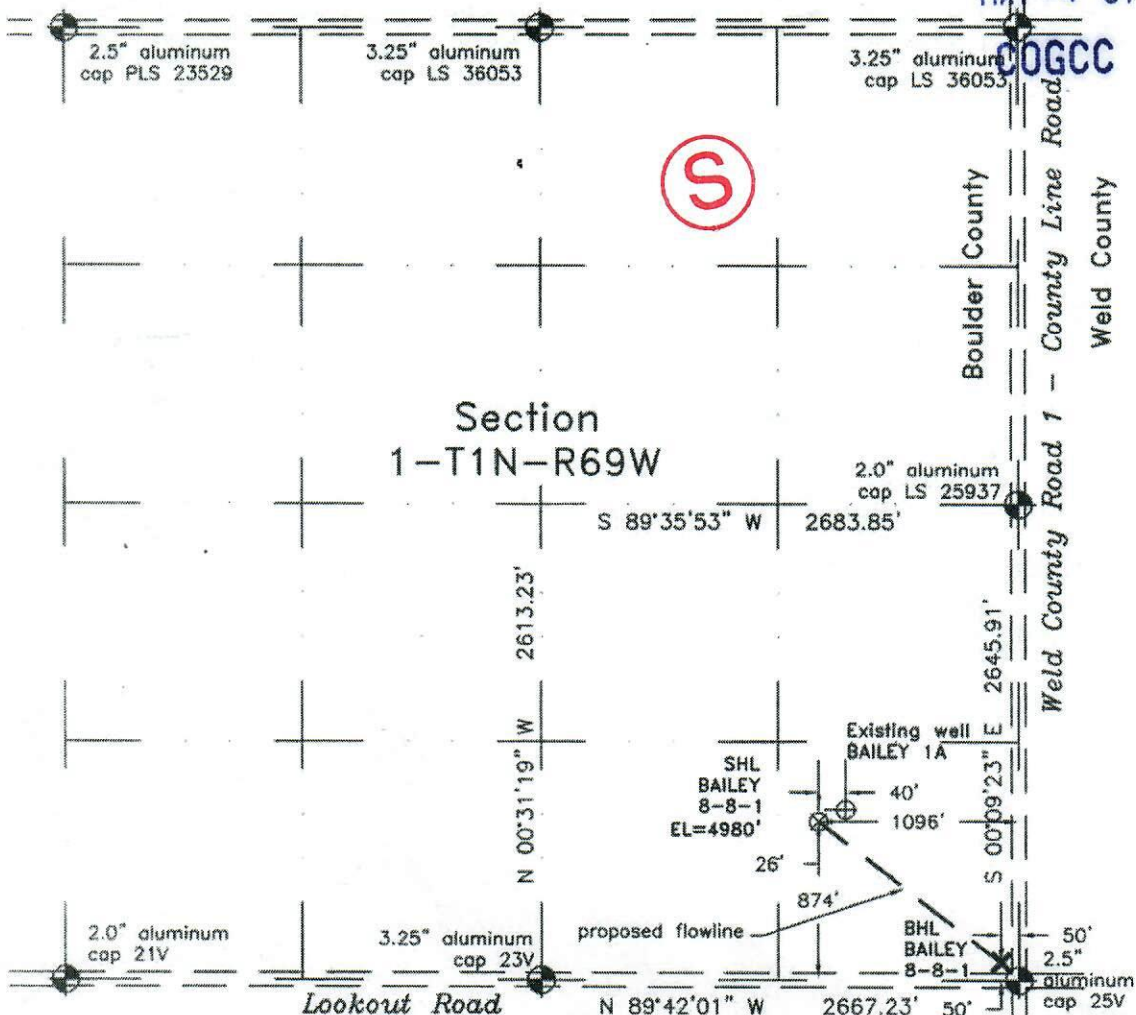
# WELL LOCATION CERTIFICATE

RECEIVED

THIS MAP DOES NOT REPRESENT A BOUNDARY SURVEY  
State Highway 52 (Mineral Road)

MAY -4 07

DOGCC



In accordance with a request from Peter Scott of EnCana Oil & Gas (USA) Inc., Frederick Land Surveying, Inc. has determined the location of the BAILEY 8-8-1 well site to be SHL 1096' FEL & BHL 50' FEL and SHL 874' FSL & BHL 50' FSL as measured at ninety (90) degrees from the section lines of Section 1, Township 1 North, Range 69 West of the 6th Principal Meridian, Boulder County, Colorado.

- LEGEND**
- - found survey monument
  - - improved road
  - (c) - calculated dimension

**Proposed Surface Hole Data:**  
 Latitude: N (SHL) 40.07544"; (BHL) 40.07304"  
 Longitude: W (SHL) 105.05937"; (BHL) 105.05549"  
 Nearest Building, Public Road, Above Ground Utility, or Railroad: 830'  
 Nearest Property Line: 470'  
 RDOF=0.231

I hereby certify that this Well Location Certificate was prepared by me or under my direct supervision on 2/06/2007 for and on behalf of EnCana Oil & Gas (USA) Inc. That it is not a Land Survey Plat or an Improvement Survey Plat and that it is not to be relied upon for establishment of fences, buildings, or other future improvement lines.  
 dated: 2/07/07

- Notes:**
- 1) Bearings based upon NAD 83 Colorado North State Plane Coordinates using GPS observations taken on 1/30/2007 by operator Tom Winans.
  - 2) Elevations based upon GPS heights and the Geoid 2003 corrections.
  - 3) There are no improvements within 200 feet of the location.
  - 4) The location falls in an agricultural field.

**NOTICE:** According to Colorado law you must commence any legal action based upon any defect in this W.L.C. within three years after you first discover such defect. In no event may any action based upon any defect in this W.L.C. be commenced more than ten years from this said date of the certification shown hereon.

M. Bryan Short, Colorado PLS 32444  
 Job #: 07006001

