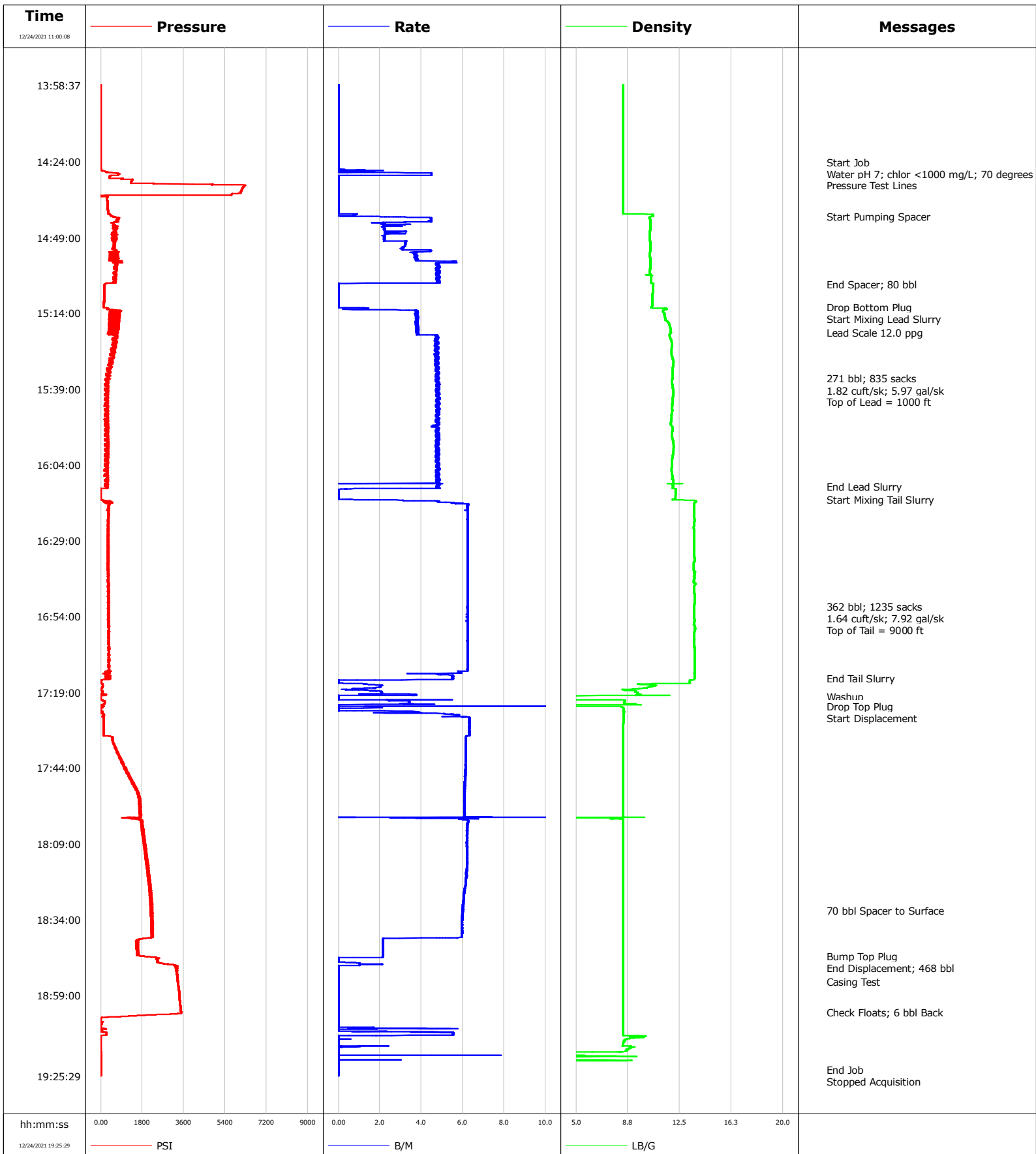


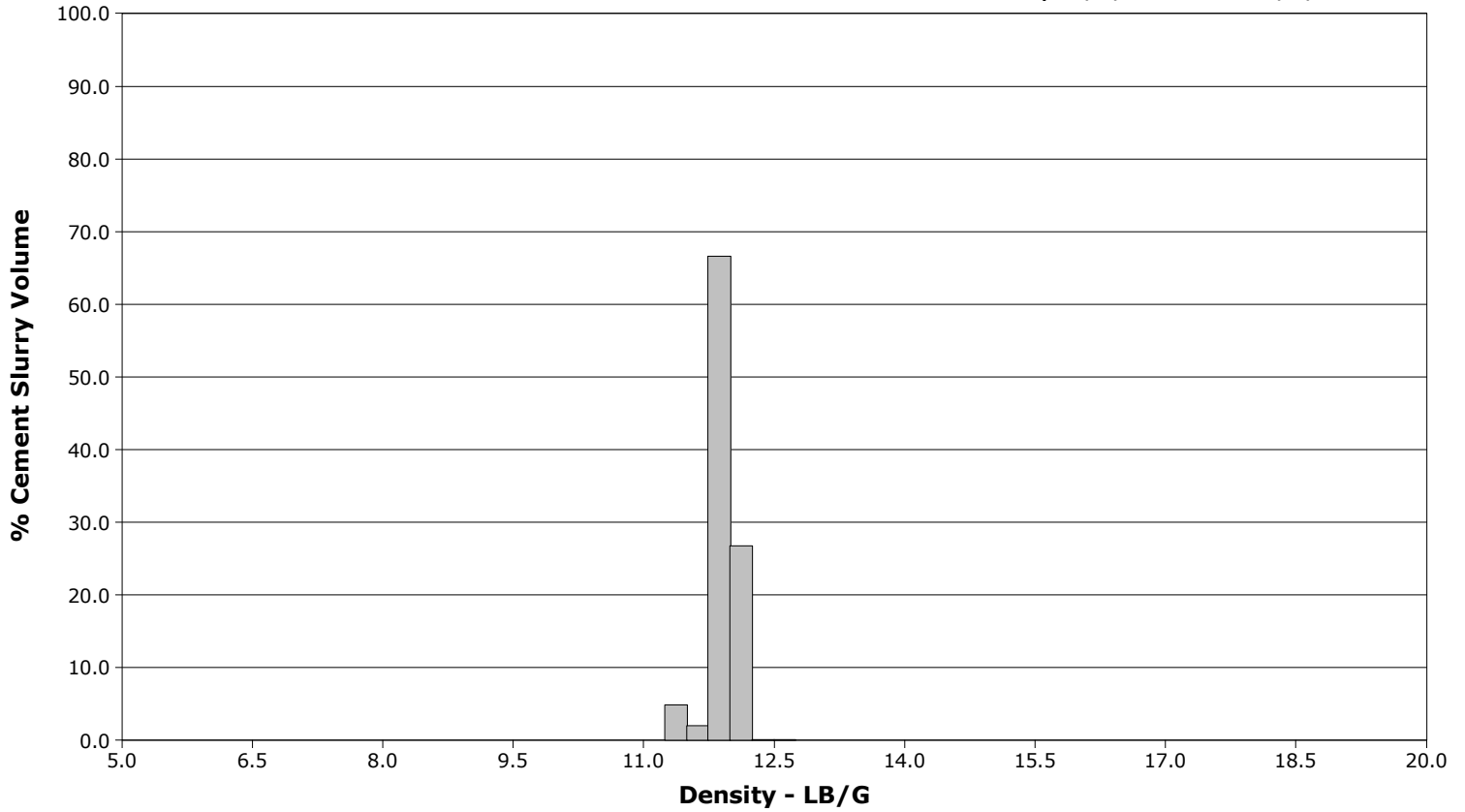
Well	SBJ 13-9HZ	Client	Oxy
Field	Wattenberg	SIR No.	EAJ7-02835
Engineer	Grayland Balmer	Job Type	Production
Country	United States	Job Date	12-24-2021



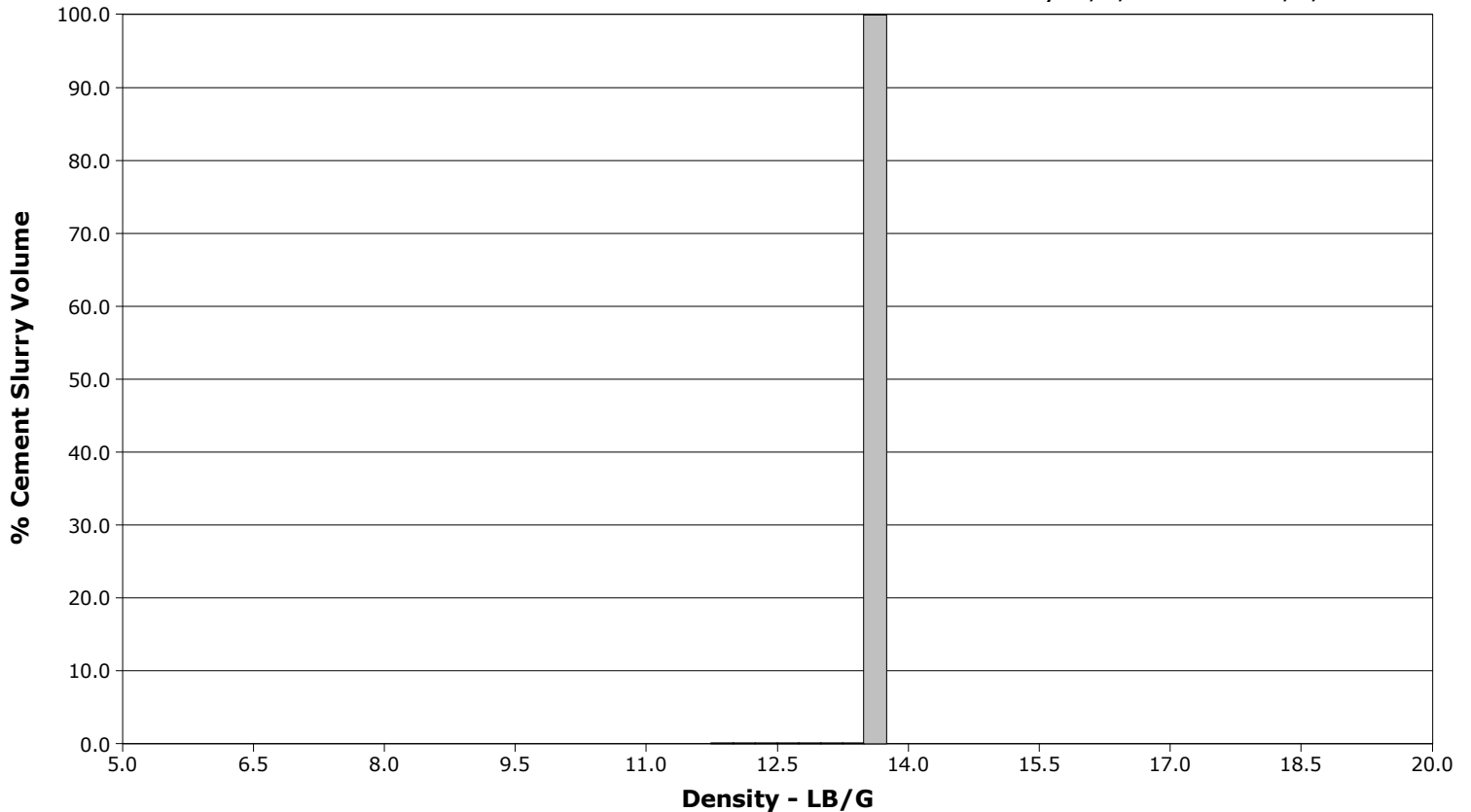
Well SBJ 13-9HZ
Field Wattenberg
Engineer Grayland Balmer
Country United States

Client Oxy
SIR No. EAJ7-02835
Job Type Production
Job Date 12-24-2021

Lead Slurry - 12/24/2021 15:12:50 to 12/24/2021 16:11:08



Tail Slurry - 12/24/2021 16:15:22 to 12/24/2021 17:14:14



				Customer			Job Number			
				Oxy			EAJ7-02835			
Well		Location (legal)		Schlumberger Location			Job Start			
SBJ 13-9HZ		PD461		Cheyenne			Dec/24/2021			
Field		Formation Name/Type		Deviation	Bit Size		Well MD		Well TVD	
Wattenberg				deg	7.9 in		20186.0 ft		6700.0 ft	
County		State/Province		BHP	BHST	BHCT	Pore Press. Gradient			
Weld		Colorado		psi	230 degF	230 degF	lb/gal			
Well Master		API/UWI								
0066441945		15-123-51601-00-00								
Rig Name	Drilled For		Service Via	Casing/Liner						
PD461				Depth, ft		Size, in	Weight, lb/ft	Grade	Thread	
Offshore Zone	Well Class		Well Type	1900.0		9.6	36.0	J55		
				20176.0		5.5	17.0	P110		
Drilling Fluid Type		Max. Density	Plastic Viscosity		Tubing/Drill Pipe					
OBM		9.20 lb/gal	cP		T/D	Depth, ft	Size, in	Weight, lb/ft	Grade	Thread
Service Line	Job Type									
Cementing	Production									
Max. Allowed Tub. Press	Max. Allowed Ann. Press		WH Connection		Perforations/Open Hole					
psi	psi				Top, ft	Bottom, ft	shot/ft	No. of Shots	Total Interval	
					ft	ft			ft	
					ft	ft			in	
					ft	ft			in	
Service Instructions		Treat Down	Displacement		Packer Type		Packer Depth			
Water pH 7; Chlorides<1000 mg/L; 70 Degrees Pressure Test 1000/6000 80 bbl spacer Drop Bottom Plug 271 bbl Lead (835 sacks; 1.82 cuft/sk; 5.97 gal/sk; top = 1000 ft) 362 bbl Tail (1235 sacks; 1.64 cuft/sk; 7.92 gal/sk; top = 9000 ft) Washup Pump and Lines Drop Top Plug Displace 468 bbl 70 bbl Spacer to Surface		Casing	468.0 bbl				ft			
		Tubing Vol.	Casing Vol.		Annular Vol.		Openhole Vol.			
		bbl	bbl		bbl		bbl			
Casing/Tubing Secured		1 Hole Vol. Circulated prior to Cement	Casing Tools			Squeeze Job				
<input checked="" type="checkbox"/>		<input checked="" type="checkbox"/>								
Lift Pressure		Shoe Type	Shoe Depth		Stage Tool Type		Stage Tool Depth			
psi		Float	20176.0 ft				ft			
Pipe Rotated		Pipe Reciprocated	Shoe Type	Shoe Depth		Stage Tool Type		Stage Tool Depth		
<input type="checkbox"/>		<input type="checkbox"/>	Float	20176.0 ft				ft		
No. Centralizers		Top Plugs	Bottom Plugs	Shoe Type	Shoe Depth		Stage Tool Type		Stage Tool Depth	
		1	1	Float	20176.0 ft				ft	
Cement Head Type		Arrived on Location	Leave Location		Collar Type	Collar Depth		Squeeze Job		
Double		Dec/24/2021 11:00	Dec/24/2021		Float	20132.0 ft		ft		
Job Scheduled For		Arrived on Location	Leave Location		Collar Type	Collar Depth		Squeeze Job		
Dec/24/2021 11:00		Dec/24/2021 11:00	Dec/24/2021		Float	20132.0 ft		ft		
Date	Time 24-hr clock	PRESSURE PSI	RATE B/M	DENSITY LB/G	Volume BBL	Message				
12/24/2021	11:00:08	-0	0.0	8.40	0.0	Started Acquisition				
12/24/2021	11:00:43	0	0.0	8.40	0.0					
12/24/2021	11:01:18	-1	0.0	8.40	0.0					
12/24/2021	11:01:53	0	0.0	8.40	0.0					
12/24/2021	11:02:28	-0	0.0	8.40	0.0					
12/24/2021	11:03:03	-0	0.0	8.40	0.0					
12/24/2021	11:03:38	0	0.0	8.39	0.0					
12/24/2021	11:04:13	-1	0.0	8.39	0.0					
12/24/2021	11:04:48	0	0.0	8.39	0.0					
12/24/2021	11:05:23	0	0.0	8.39	0.0					
12/24/2021	11:05:58	-0	0.0	8.39	0.0					
12/24/2021	11:06:33	-0	0.0	8.39	0.0					
12/24/2021	11:07:08	-1	0.0	8.39	0.0					
12/24/2021	11:07:43	-1	0.0	8.39	0.0					
12/24/2021	11:08:18	-1	0.0	8.39	0.0					
12/24/2021	11:08:53	-0	0.0	8.39	0.0					
12/24/2021	11:09:28	-1	0.0	8.39	0.0					
12/24/2021	11:10:03	-1	0.0	8.39	0.0					
12/24/2021	11:10:38	-1	0.0	8.39	0.0					
12/24/2021	11:11:13	-1	0.0	8.39	0.0					
12/24/2021	11:11:48	-1	0.0	8.39	0.0					

Well		Field		Job Start	Customer		Job Number
SBJ 13-9HZ		Wattenberg		Dec/24/2021	Oxy		EAJ7-02835
Date	Time 24-hr clock	PRESSURE PSI	RATE B/M	DENSITY LB/G	Volume BBL	Message	
12/24/2021	11:12:58	-1	0.0	8.39	0.0		
12/24/2021	11:13:33	-1	0.0	8.39	0.0		
12/24/2021	11:14:08	-1	0.0	8.39	0.0		
12/24/2021	11:14:43	-1	0.0	8.39	0.0		
12/24/2021	11:15:18	-1	0.0	8.40	0.0		
12/24/2021	11:15:53	-1	0.0	8.40	0.0		
12/24/2021	11:16:28	-1	0.0	8.40	0.0		
12/24/2021	11:17:03	-1	0.0	8.40	0.0		
12/24/2021	11:18:13	-1	0.0	8.40	0.0		
12/24/2021	11:18:48	-1	0.0	8.40	0.0		
12/24/2021	11:19:23	-2	0.0	8.40	0.0		
12/24/2021	11:19:58	-1	0.0	8.40	0.0		
12/24/2021	11:20:33	-1	0.0	8.40	0.0		
12/24/2021	11:21:08	-1	0.0	8.40	0.0		
12/24/2021	11:21:43	-1	0.0	8.40	0.0		
12/24/2021	11:22:53	-1	0.0	8.40	0.0		
12/24/2021	11:23:28	-1	0.0	8.40	0.0		
12/24/2021	11:24:03	-1	0.0	8.40	0.0		
12/24/2021	11:25:13	-1	0.0	8.40	0.0		
12/24/2021	11:25:48	-1	0.0	8.40	0.0		
12/24/2021	11:26:23	-2	0.0	8.40	0.0		
12/24/2021	11:26:58	-1	0.0	8.40	0.0		
12/24/2021	11:27:33	-1	0.0	8.40	0.0		
12/24/2021	11:28:08	-2	0.0	8.40	0.0		
12/24/2021	11:28:43	-1	0.0	8.40	0.0		
12/24/2021	11:29:18	-2	0.0	8.40	0.0		
12/24/2021	11:29:53	-2	0.0	8.40	0.0		
12/24/2021	11:30:28	-1	0.0	8.40	0.0		
12/24/2021	11:31:03	-1	0.0	8.40	0.0		
12/24/2021	11:31:38	-2	0.0	8.40	0.0		
12/24/2021	11:32:13	-1	0.0	8.40	0.0		
12/24/2021	11:32:48	-1	0.0	8.40	0.0		
12/24/2021	11:33:23	-1	0.0	8.40	0.0		
12/24/2021	11:33:58	-1	0.0	8.40	0.0		
12/24/2021	11:34:33	-1	0.0	8.40	0.0		
12/24/2021	11:35:08	-1	0.0	8.40	0.0		
12/24/2021	11:35:43	-1	0.0	8.40	0.0		
12/24/2021	11:36:18	-2	0.0	8.40	0.0		
12/24/2021	11:36:53	-2	0.0	8.40	0.0		
12/24/2021	11:37:28	-1	0.0	8.40	0.0		
12/24/2021	11:38:03	-2	0.0	8.40	0.0		
12/24/2021	11:38:38	-2	0.0	8.40	0.0		
12/24/2021	11:39:13	-2	0.0	8.40	0.0		
12/24/2021	11:39:48	-2	0.0	8.41	0.0		
12/24/2021	11:40:23	-2	0.0	8.40	0.0		
12/24/2021	11:40:58	-2	0.0	8.40	0.0		
12/24/2021	11:41:33	-1	0.0	8.41	0.0		
12/24/2021	11:42:08	-1	0.0	8.40	0.0		
12/24/2021	11:42:43	-1	0.0	8.41	0.0		
12/24/2021	11:43:18	-1	0.0	8.41	0.0		
12/24/2021	11:43:53	-1	0.0	8.40	0.0		
12/24/2021	11:44:28	-1	0.0	8.40	0.0		
12/24/2021	11:45:03	-1	0.0	8.41	0.0		
12/24/2021	11:45:38	-1	0.0	8.41	0.0		

Well		Field		Job Start		Customer		Job Number	
SBJ 13-9HZ		Wattenberg		Dec/24/2021		Oxy		EAJ7-02835	
Date	Time 24-hr clock	PRESSURE PSI	RATE B/M	DENSITY LB/G	Volume BBL	Message			
12/24/2021	11:46:48	-1	0.0	8.41	0.0				
12/24/2021	11:47:23	-1	0.0	8.41	0.0				
12/24/2021	11:47:58	-1	0.0	8.41	0.0				
12/24/2021	11:48:33	-1	0.0	8.41	0.0				
12/24/2021	11:49:08	-0	0.0	8.41	0.0				
12/24/2021	11:49:43	-1	0.0	8.41	0.0				
12/24/2021	11:50:18	-1	0.0	8.41	0.0				
12/24/2021	11:50:53	-1	0.0	8.41	0.0				
12/24/2021	11:51:28	-1	0.0	8.41	0.0				
12/24/2021	11:52:03	-1	0.0	8.41	0.0				
12/24/2021	11:52:38	-2	0.0	8.41	0.0				
12/24/2021	11:53:13	-1	0.0	8.41	0.0				
12/24/2021	11:54:23	-1	0.0	8.41	0.0				
12/24/2021	11:54:58	-1	0.0	8.41	0.0				
12/24/2021	11:55:33	-1	0.0	8.41	0.0				
12/24/2021	11:56:08	-1	0.0	8.41	0.0				
12/24/2021	11:56:43	-1	0.0	8.41	0.0				
12/24/2021	11:57:18	-2	0.0	8.41	0.0				
12/24/2021	11:57:53	-1	0.0	8.41	0.0				
12/24/2021	11:58:28	-1	0.0	8.41	0.0				
12/24/2021	11:59:03	-1	0.0	8.41	0.0				
12/24/2021	11:59:38	-1	0.0	8.41	0.0				
12/24/2021	12:00:13	-1	0.0	8.41	0.0				
12/24/2021	12:00:48	-1	0.0	8.41	0.0				
12/24/2021	12:01:23	-1	0.0	8.41	0.0				
12/24/2021	12:02:33	-0	0.0	8.41	0.0				
12/24/2021	12:03:08	-1	0.0	8.41	0.0				
12/24/2021	12:04:18	-1	0.0	8.41	0.0				
12/24/2021	12:04:53	-2	0.0	8.41	0.0				
12/24/2021	12:05:28	-0	0.0	8.41	0.0				
12/24/2021	12:06:03	-1	0.0	8.41	0.0				
12/24/2021	12:06:38	-1	0.0	8.41	0.0				
12/24/2021	12:07:13	-2	0.0	8.41	0.0				
12/24/2021	12:07:48	-1	0.0	8.41	0.0				
12/24/2021	12:08:23	-1	0.0	8.41	0.0				
12/24/2021	12:08:58	-1	0.0	8.41	0.0				
12/24/2021	12:09:33	-2	0.0	8.41	0.0				
12/24/2021	12:10:08	-1	0.0	8.41	0.0				
12/24/2021	12:10:43	-1	0.0	8.41	0.0				
12/24/2021	12:11:18	-2	0.0	8.41	0.0				
12/24/2021	12:11:53	-1	0.0	8.41	0.0				
12/24/2021	12:12:28	-1	0.0	8.41	0.0				
12/24/2021	12:13:03	-2	0.0	8.41	0.0				
12/24/2021	12:13:38	-3	0.0	8.41	0.0				
12/24/2021	12:14:13	-1	0.0	8.41	0.0				
12/24/2021	12:14:48	-2	0.0	8.41	0.0				
12/24/2021	12:15:23	-2	0.0	8.41	0.0				
12/24/2021	12:15:58	-2	0.0	8.41	0.0				
12/24/2021	12:16:33	-2	0.0	8.41	0.0				
12/24/2021	12:17:08	-2	0.0	8.41	0.0				
12/24/2021	12:18:18	-2	0.0	8.41	0.0				
12/24/2021	12:18:53	-2	0.0	8.41	0.0				
12/24/2021	12:19:28	-2	0.0	8.41	0.0				
12/24/2021	12:20:38	-1	0.0	8.41	0.0				

Well		Field		Job Start		Customer		Job Number	
SBJ 13-9HZ		Wattenberg		Dec/24/2021		Oxy		EAJ7-02835	
Date	Time 24-hr clock	PRESSURE PSI	RATE B/M	DENSITY LB/G	Volume BBL	Message			
12/24/2021	12:21:48	-3	0.0	8.41	0.0				
12/24/2021	12:22:23	-3	0.0	8.41	0.0				
12/24/2021	12:22:58	-3	0.0	8.41	0.0				
12/24/2021	12:23:33	-3	0.0	8.41	0.0				
12/24/2021	12:24:08	-2	0.0	8.41	0.0				
12/24/2021	12:24:43	-3	0.0	8.41	0.0				
12/24/2021	12:25:18	-3	0.0	8.41	0.0				
12/24/2021	12:25:53	-3	0.0	8.41	0.0				
12/24/2021	12:26:28	-3	0.0	8.41	0.0				
12/24/2021	12:27:03	-3	0.0	8.41	0.0				
12/24/2021	12:27:38	-3	0.0	8.41	0.0				
12/24/2021	12:28:13	-3	0.0	8.41	0.0				
12/24/2021	12:28:48	-3	0.0	8.41	0.0				
12/24/2021	12:29:23	-3	0.0	8.41	0.0				
12/24/2021	12:29:58	-3	0.0	8.41	0.0				
12/24/2021	12:31:43	-4	0.0	8.41	0.0				
12/24/2021	12:32:18	-3	0.0	8.40	0.0				
12/24/2021	12:32:53	-3	0.0	8.40	0.0				
12/24/2021	12:33:28	-3	0.0	8.40	0.0				
12/24/2021	12:34:03	-3	0.0	8.40	0.0				
12/24/2021	12:34:38	-3	0.0	8.40	0.0				
12/24/2021	12:35:13	-3	0.0	8.40	0.0				
12/24/2021	12:35:48	-3	0.0	8.40	0.0				
12/24/2021	12:36:23	-4	0.0	8.39	0.0				
12/24/2021	12:36:58	-4	0.0	8.39	0.0				
12/24/2021	12:37:33	-3	0.0	8.40	0.0				
12/24/2021	12:38:08	-4	0.0	8.40	0.0				
12/24/2021	12:38:43	-4	0.0	8.40	0.0				
12/24/2021	12:39:18	-4	0.0	8.40	0.0				
12/24/2021	12:40:28	-4	0.0	8.40	0.0				
12/24/2021	12:41:03	-4	0.0	8.40	0.0				
12/24/2021	12:41:38	-4	0.0	8.40	0.0				
12/24/2021	12:42:13	-4	0.0	8.40	0.0				
12/24/2021	12:42:48	-5	0.0	8.40	0.0				
12/24/2021	12:43:23	-4	0.0	8.40	0.0				
12/24/2021	12:43:58	-4	0.0	8.40	0.0				
12/24/2021	12:44:33	-4	0.0	8.40	0.0				
12/24/2021	12:45:08	-4	0.0	8.38	0.0				
12/24/2021	12:45:43	-5	0.0	8.39	0.0				
12/24/2021	12:46:18	-4	0.0	8.39	0.0				
12/24/2021	12:46:53	-4	0.0	8.40	0.0				
12/24/2021	12:47:28	-4	0.0	8.40	0.0				
12/24/2021	12:48:03	-4	0.0	8.39	0.0				
12/24/2021	12:48:38	-4	0.0	8.39	0.0				
12/24/2021	12:49:13	-4	0.0	8.39	0.0				
12/24/2021	12:49:48	-4	0.0	8.39	0.0				
12/24/2021	12:50:23	-4	0.0	8.39	0.0				
12/24/2021	12:50:58	-3	0.0	8.39	0.0				
12/24/2021	12:51:33	-4	0.0	8.39	0.0				
12/24/2021	12:52:08	-4	0.0	8.39	0.0				
12/24/2021	12:52:43	-4	0.0	8.39	0.0				
12/24/2021	12:53:18	-4	0.0	8.39	0.0				
12/24/2021	12:53:53	-3	0.0	8.39	0.0				
12/24/2021	12:54:28	-3	0.0	8.39	0.0				

Well		Field		Job Start		Customer		Job Number	
SBJ 13-9HZ		Wattenberg		Dec/24/2021		Oxy		EAJ7-02835	
Date	Time 24-hr clock	PRESSURE PSI	RATE B/M	DENSITY LB/G	Volume BBL	Message			
12/24/2021	12:55:38	-4	0.0	8.39	0.0				
12/24/2021	12:56:13	-4	0.0	8.39	0.0				
12/24/2021	12:56:48	-4	0.0	8.39	0.0				
12/24/2021	12:57:23	-4	0.0	8.39	0.0				
12/24/2021	12:57:58	-3	0.0	8.39	0.0				
12/24/2021	12:58:33	-4	0.0	8.40	0.0				
12/24/2021	12:59:08	-4	0.0	8.39	0.0				
12/24/2021	13:00:18	-4	0.0	8.40	0.0				
12/24/2021	13:00:53	-4	0.0	8.39	0.0				
12/24/2021	13:01:28	-4	0.0	8.40	0.0				
12/24/2021	13:02:03	-3	0.0	8.40	0.0				
12/24/2021	13:02:38	-4	0.0	8.40	0.0				
12/24/2021	13:03:13	-4	0.0	8.39	0.0				
12/24/2021	13:03:48	-3	0.0	8.40	0.0				
12/24/2021	13:04:23	-4	0.0	8.39	0.0				
12/24/2021	13:04:58	-4	0.0	8.40	0.0				
12/24/2021	13:05:33	-4	0.0	8.40	0.0				
12/24/2021	13:06:08	-4	0.0	8.40	0.0				
12/24/2021	13:06:43	-3	0.0	8.40	0.0				
12/24/2021	13:07:18	-3	0.0	8.40	0.0				
12/24/2021	13:07:53	-3	0.0	8.40	0.0				
12/24/2021	13:08:28	-4	0.0	8.40	0.0				
12/24/2021	13:09:03	-4	0.0	8.40	0.0				
12/24/2021	13:09:38	-4	0.0	8.40	0.0				
12/24/2021	13:10:13	-4	0.0	8.40	0.0				
12/24/2021	13:10:48	-3	0.0	8.40	0.0				
12/24/2021	13:11:23	-3	0.0	8.40	0.0				
12/24/2021	13:11:58	-4	0.0	8.40	0.0				
12/24/2021	13:12:33	-3	0.0	8.40	0.0				
12/24/2021	13:13:43	-3	0.0	8.40	0.0				
12/24/2021	13:14:18	-4	0.0	8.40	0.0				
12/24/2021	13:14:53	-4	0.0	8.40	0.0				
12/24/2021	13:15:28	-4	0.0	8.40	0.0				
12/24/2021	13:16:03	-3	0.0	8.40	0.0				
12/24/2021	13:16:38	-4	0.0	8.40	0.0				
12/24/2021	13:17:13	-4	0.0	8.40	0.0				
12/24/2021	13:17:48	-3	0.0	8.40	0.0				
12/24/2021	13:18:23	-3	0.0	8.40	0.0				
12/24/2021	13:18:58	-4	0.0	8.40	0.0				
12/24/2021	13:19:33	-3	0.0	8.40	0.0				
12/24/2021	13:20:08	-4	0.0	8.40	0.0				
12/24/2021	13:20:43	-4	0.0	8.40	0.0				
12/24/2021	13:21:18	-3	0.0	8.40	0.0				
12/24/2021	13:21:53	-3	0.0	8.40	0.0				
12/24/2021	13:22:28	-3	0.0	8.40	0.0				
12/24/2021	13:23:03	-3	0.0	8.40	0.0				
12/24/2021	13:24:48	-3	0.0	8.40	0.0				
12/24/2021	13:25:23	-4	0.0	8.40	0.0				
12/24/2021	13:25:58	-3	0.0	8.40	0.0				
12/24/2021	13:26:33	-3	0.0	8.40	0.0				
12/24/2021	13:27:08	-4	0.0	8.40	0.0				
12/24/2021	13:27:43	-4	0.0	8.40	0.0				
12/24/2021	13:28:18	-3	0.0	8.41	0.0				
12/24/2021	13:28:53	-3	0.0	8.40	0.0				

Well		Field		Job Start		Customer		Job Number	
SBJ 13-9HZ		Wattenberg		Dec/24/2021		Oxy		EAJ7-02835	
Date	Time 24-hr clock	PRESSURE PSI	RATE B/M	DENSITY LB/G	Volume BBL	Message			
12/24/2021	13:30:38	-3	0.0	8.40	0.0				
12/24/2021	13:31:13	-3	0.0	8.41	0.0				
12/24/2021	13:31:48	-3	0.0	8.41	0.0				
12/24/2021	13:32:23	-3	0.0	8.41	0.0				
12/24/2021	13:32:58	-3	0.0	8.41	0.0				
12/24/2021	13:33:33	-3	0.0	8.41	0.0				
12/24/2021	13:34:08	-3	0.0	8.41	0.0				
12/24/2021	13:34:43	-4	0.0	8.41	0.0				
12/24/2021	13:35:18	-3	0.0	8.41	0.0				
12/24/2021	13:35:53	-3	0.0	8.41	0.0				
12/24/2021	13:37:03	-3	0.0	8.41	0.0				
12/24/2021	13:37:38	-3	0.0	8.41	0.0				
12/24/2021	13:38:13	-3	0.0	8.41	0.0				
12/24/2021	13:38:48	-3	0.0	8.41	0.0				
12/24/2021	13:39:23	-3	0.0	8.41	0.0				
12/24/2021	13:39:58	-4	0.0	8.41	0.0				
12/24/2021	13:40:33	-3	0.0	8.41	0.0				
12/24/2021	13:41:08	-3	0.0	8.41	0.0				
12/24/2021	13:41:43	-4	0.0	8.41	0.0				
12/24/2021	13:42:18	-2	0.0	8.41	0.0				
12/24/2021	13:42:53	-3	0.0	8.41	0.0				
12/24/2021	13:43:28	-4	0.0	8.41	0.0				
12/24/2021	13:44:03	-3	0.0	8.41	0.0				
12/24/2021	13:44:38	-4	0.0	8.41	0.0				
12/24/2021	13:45:13	-3	0.0	8.41	0.0				
12/24/2021	13:45:48	-3	0.0	8.41	0.0				
12/24/2021	13:46:23	-4	0.0	8.41	0.0				
12/24/2021	13:46:58	-3	0.0	8.41	0.0				
12/24/2021	13:47:33	-4	0.0	8.41	0.0				
12/24/2021	13:48:08	-4	0.0	8.41	0.0				
12/24/2021	13:48:43	-3	0.0	8.41	0.0				
12/24/2021	13:49:18	-3	0.0	8.41	0.0				
12/24/2021	13:49:53	-3	0.0	8.41	0.0				
12/24/2021	13:51:03	-3	0.0	8.41	0.0				
12/24/2021	13:52:13	-4	0.0	8.41	0.0				
12/24/2021	13:52:48	-3	0.0	8.41	0.0				
12/24/2021	13:53:23	-3	0.0	8.41	0.0				
12/24/2021	13:53:58	-3	0.0	8.41	0.0				
12/24/2021	13:54:33	-3	0.0	8.41	0.0				
12/24/2021	13:55:43	-3	0.0	8.41	0.0				
12/24/2021	13:56:53	-3	0.0	8.41	0.0				
12/24/2021	13:57:28	-3	0.0	8.41	0.0				
12/24/2021	13:58:03	-4	0.0	8.41	0.0				
12/24/2021	13:58:38	-3	0.0	8.41	0.0				
12/24/2021	13:59:13	-2	0.0	8.41	0.0				
12/24/2021	13:59:48	-2	0.0	8.41	0.0				
12/24/2021	14:00:23	-3	0.0	8.41	0.0				
12/24/2021	14:00:58	-3	0.0	8.41	0.0				
12/24/2021	14:01:33	-3	0.0	8.41	0.0				
12/24/2021	14:02:08	-3	0.0	8.41	0.0				
12/24/2021	14:02:43	-3	0.0	8.41	0.0				
12/24/2021	14:03:18	-3	0.0	8.41	0.0				
12/24/2021	14:03:53	-3	0.0	8.41	0.0				
12/24/2021	14:04:28	-3	0.0	8.41	0.0				

Well		Field		Job Start		Customer		Job Number	
SBJ 13-9HZ		Wattenberg		Dec/24/2021		Oxy		EAJ7-02835	
Date	Time 24-hr clock	PRESSURE PSI	RATE B/M	DENSITY LB/G	Volume BBL	Message			
12/24/2021	14:05:38	-3	0.0	8.41	0.0				
12/24/2021	14:06:13	-3	0.0	8.41	0.0				
12/24/2021	14:06:48	-3	0.0	8.41	0.0				
12/24/2021	14:07:23	-4	0.0	8.41	0.0				
12/24/2021	14:07:58	-3	0.0	8.41	0.0				
12/24/2021	14:08:33	-3	0.0	8.41	0.0				
12/24/2021	14:09:08	-4	0.0	8.41	0.0				
12/24/2021	14:09:43	-3	0.0	8.41	0.0				
12/24/2021	14:10:18	-3	0.0	8.41	0.0				
12/24/2021	14:10:53	-3	0.0	8.41	0.0				
12/24/2021	14:11:28	-2	0.0	8.41	0.0				
12/24/2021	14:12:03	-3	0.0	8.41	0.0				
12/24/2021	14:12:38	-3	0.0	8.41	0.0				
12/24/2021	14:13:13	-3	0.0	8.41	0.0				
12/24/2021	14:13:48	-3	0.0	8.41	0.0				
12/24/2021	14:14:23	-3	0.0	8.41	0.0				
12/24/2021	14:14:58	-3	0.0	8.41	0.0				
12/24/2021	14:15:33	-3	0.0	8.41	0.0				
12/24/2021	14:16:08	-5	0.0	8.41	0.0				
12/24/2021	14:16:43	-3	0.0	8.41	0.0				
12/24/2021	14:17:18	-3	0.0	8.41	0.0				
12/24/2021	14:17:53	-3	0.0	8.41	0.0				
12/24/2021	14:18:28	-3	0.0	8.41	0.0				
12/24/2021	14:19:03	-3	0.0	8.41	0.0				
12/24/2021	14:19:38	-3	0.0	8.41	0.0				
12/24/2021	14:20:13	-3	0.0	8.41	0.0				
12/24/2021	14:20:48	-3	0.0	8.41	0.0				
12/24/2021	14:21:23	-3	0.0	8.41	0.0				
12/24/2021	14:21:58	-4	0.0	8.41	0.0				
12/24/2021	14:22:33	-3	0.0	8.41	0.0				
12/24/2021	14:23:08	-3	0.0	8.41	0.0				
12/24/2021	14:23:43	-3	0.0	8.41	0.0				
12/24/2021	14:24:09	-3	0.0	8.41	0.0	Start Job			
12/24/2021	14:24:11	-3	0.0	8.41	0.0	Water pH 7; chlor <1000 mg/L; 70 degrees			
12/24/2021	14:24:18	-2	0.0	8.41	0.0				
12/24/2021	14:24:53	-3	0.0	8.41	0.0				
12/24/2021	14:25:28	-3	0.0	8.41	0.0				
12/24/2021	14:26:03	-2	0.0	8.41	0.0				
12/24/2021	14:26:38	1	0.0	8.41	0.0				
12/24/2021	14:27:13	188	1.7	8.42	0.5				
12/24/2021	14:27:48	709	4.5	8.41	1.8				
12/24/2021	14:28:23	744	4.5	8.41	4.4				
12/24/2021	14:28:58	384	0.0	8.41	5.1				
12/24/2021	14:29:33	925	0.0	8.41	5.1				
12/24/2021	14:30:08	1345	0.0	8.41	5.1				
12/24/2021	14:30:43	1317	0.0	8.41	5.1				
12/24/2021	14:31:18	2279	0.0	8.41	5.1				
12/24/2021	14:31:36	4825	0.0	8.41	5.1	Pressure Test Lines			
12/24/2021	14:31:53	6237	0.0	8.41	5.1				
12/24/2021	14:32:28	6172	0.0	8.41	5.1				
12/24/2021	14:33:03	6131	0.0	8.41	5.1				
12/24/2021	14:33:38	6097	0.0	8.41	5.1				
12/24/2021	14:34:13	6069	0.0	8.41	5.1				
12/24/2021	14:34:48	5674	0.0	8.41	5.1				

Well		Field		Job Start		Customer		Job Number	
SBJ 13-9HZ		Wattenberg		Dec/24/2021		Oxy		EAJ7-02835	
Date	Time 24-hr clock	PRESSURE PSI	RATE B/M	DENSITY LB/G	Volume BBL	Message			
12/24/2021	14:35:58	274	0.0	8.41	5.1				
12/24/2021	14:36:33	276	0.0	8.41	5.1				
12/24/2021	14:37:08	281	0.0	8.41	5.1				
12/24/2021	14:37:43	286	0.0	8.41	5.1				
12/24/2021	14:38:18	290	0.0	8.41	5.1				
12/24/2021	14:38:53	294	0.0	8.41	5.1				
12/24/2021	14:39:28	298	0.0	8.41	5.1				
12/24/2021	14:40:03	300	0.0	8.41	5.1				
12/24/2021	14:40:38	304	0.0	8.41	5.1				
12/24/2021	14:41:13	354	0.6	8.41	5.1				
12/24/2021	14:41:48	433	0.7	10.56	5.6				
12/24/2021	14:41:58	479	0.8	10.54	5.7	Start Pumping Spacer			
12/24/2021	14:42:58	718	4.5	10.36	9.4				
12/24/2021	14:43:33	695	4.5	10.38	12.0				
12/24/2021	14:44:08	548	2.1	10.38	14.1				
12/24/2021	14:44:43	606	3.2	10.39	15.4				
12/24/2021	14:45:18	685	2.2	10.39	16.8				
12/24/2021	14:45:53	686	2.2	10.39	18.1				
12/24/2021	14:46:28	627	2.2	10.37	19.4				
12/24/2021	14:47:03	591	3.3	10.35	20.9				
12/24/2021	14:47:38	700	2.2	10.34	22.3				
12/24/2021	14:48:13	649	2.2	10.35	23.7				
12/24/2021	14:48:48	490	2.2	10.35	25.0				
12/24/2021	14:49:23	508	2.2	10.35	26.3				
12/24/2021	14:49:58	525	2.2	10.35	27.6				
12/24/2021	14:50:33	627	3.2	10.37	29.2				
12/24/2021	14:51:08	598	3.2	10.38	31.1				
12/24/2021	14:51:43	559	3.2	10.37	33.0				
12/24/2021	14:52:18	550	3.2	10.37	34.8				
12/24/2021	14:52:53	569	3.1	10.37	36.6				
12/24/2021	14:53:28	641	4.4	10.37	38.9				
12/24/2021	14:54:03	562	3.7	10.35	41.2				
12/24/2021	14:54:38	765	3.8	10.34	43.4				
12/24/2021	14:55:13	691	3.7	10.35	45.6				
12/24/2021	14:55:48	366	3.7	10.36	47.7				
12/24/2021	14:56:23	616	3.8	10.37	49.9				
12/24/2021	14:56:58	502	5.6	10.37	52.5				
12/24/2021	14:57:33	639	4.8	10.36	55.6				
12/24/2021	14:58:08	692	4.8	10.36	58.4				
12/24/2021	14:58:43	596	4.7	10.36	61.3				
12/24/2021	14:59:18	590	4.7	10.36	64.1				
12/24/2021	14:59:53	667	4.8	10.35	66.8				
12/24/2021	15:00:28	578	4.8	10.36	69.7				
12/24/2021	15:01:03	678	4.7	10.36	72.5				
12/24/2021	15:01:38	653	4.8	10.43	75.3				
12/24/2021	15:02:13	561	4.9	10.42	78.1				
12/24/2021	15:02:48	631	4.8	10.43	80.9				
12/24/2021	15:03:23	628	4.9	10.42	83.7				
12/24/2021	15:03:58	634	4.9	10.40	86.5				
12/24/2021	15:04:21	180	0.0	10.58	87.0	End Spacer; 80 bbl			
12/24/2021	15:04:33	135	0.0	10.57	87.0				
12/24/2021	15:05:08	131	0.0	10.56	87.0				
12/24/2021	15:05:43	132	0.0	10.55	87.0				
12/24/2021	15:06:18	132	0.0	10.54	87.0				

Well		Field		Job Start		Customer		Job Number	
SBJ 13-9HZ		Wattenberg		Dec/24/2021		Oxy		EAJ7-02835	
Date	Time 24-hr clock	PRESSURE PSI	RATE B/M	DENSITY LB/G	Volume BBL	Message			
12/24/2021	15:07:28	131	0.0	10.54	87.0				
12/24/2021	15:08:03	131	0.0	10.53	87.0				
12/24/2021	15:08:38	130	0.0	10.53	87.0				
12/24/2021	15:09:13	130	0.0	10.53	87.0				
12/24/2021	15:09:48	130	0.0	10.52	87.0				
12/24/2021	15:10:23	128	0.0	10.51	87.0				
12/24/2021	15:10:58	128	0.0	10.51	87.0				
12/24/2021	15:11:33	128	0.0	10.50	87.0				
12/24/2021	15:11:48	127	0.0	10.46	87.0	Drop Bottom Plug			
12/24/2021	15:12:08	131	0.0	10.42	87.0				
12/24/2021	15:12:43	296	0.4	11.53	87.6				
12/24/2021	15:12:50	425	2.4	11.34	87.8	Start Mixing Lead Slurry			
12/24/2021	15:13:18	887	3.8	11.28	89.5				
12/24/2021	15:13:53	689	3.8	11.37	91.7				
12/24/2021	15:14:28	640	3.7	11.40	93.9				
12/24/2021	15:15:03	555	3.8	11.41	96.1				
12/24/2021	15:15:38	366	3.8	11.44	98.3				
12/24/2021	15:16:13	627	3.8	11.45	100.5				
12/24/2021	15:16:48	468	3.7	11.64	102.7				
12/24/2021	15:17:23	787	3.7	11.73	104.9				
12/24/2021	15:17:58	692	3.7	11.77	107.1				
12/24/2021	15:18:33	453	3.8	11.81	109.4				
12/24/2021	15:19:43	366	3.8	11.84	113.8				
12/24/2021	15:20:15	373	3.8	11.86	115.8	Lead Scale 12.0 ppg			
12/24/2021	15:20:18	758	3.9	11.86	116.0				
12/24/2021	15:20:53	457	3.8	11.78	118.2				
12/24/2021	15:21:28	717	4.7	11.78	120.8				
12/24/2021	15:22:03	681	4.8	11.82	123.6				
12/24/2021	15:22:38	658	4.7	11.86	126.4				
12/24/2021	15:23:13	634	4.8	11.90	129.1				
12/24/2021	15:23:48	674	4.8	11.94	131.9				
12/24/2021	15:24:23	684	4.8	11.95	134.7				
12/24/2021	15:24:58	600	4.7	11.94	137.4				
12/24/2021	15:25:33	572	4.7	11.92	140.2				
12/24/2021	15:26:08	501	4.6	11.91	143.0				
12/24/2021	15:26:43	610	4.7	11.90	145.7				
12/24/2021	15:27:18	417	4.7	11.90	148.5				
12/24/2021	15:27:53	411	4.6	11.93	151.3				
12/24/2021	15:28:28	506	4.8	11.97	154.0				
12/24/2021	15:29:03	432	4.8	11.99	156.8				
12/24/2021	15:29:38	492	4.7	12.03	159.6				
12/24/2021	15:30:13	455	4.8	12.04	162.4				
12/24/2021	15:30:48	373	4.8	12.03	165.2				
12/24/2021	15:31:23	429	4.8	12.02	167.9				
12/24/2021	15:31:58	405	4.8	12.00	170.7				
12/24/2021	15:32:33	388	4.8	11.99	173.5				
12/24/2021	15:33:08	370	4.8	11.99	176.3				
12/24/2021	15:33:43	427	4.9	11.99	179.1				
12/24/2021	15:34:18	234	4.7	11.98	181.9				
12/24/2021	15:34:53	310	4.7	11.97	184.6				
12/24/2021	15:35:28	275	4.7	11.97	187.4	271 bbl; 835 sacks			
12/24/2021	15:35:31	348	4.8	11.97	187.7	1.82 cuft/sk; 5.97 gal/sk			
12/24/2021	15:35:34	385	4.9	11.97	187.9	Top of Lead = 1000 ft			
12/24/2021	15:36:03	194	4.7	11.96	190.2				

Well		Field		Job Start		Customer		Job Number	
SBJ 13-9HZ		Wattenberg		Dec/24/2021		Oxy		EAJ7-02835	
Date	Time 24-hr clock	PRESSURE PSI	RATE B/M	DENSITY LB/G	Volume BBL	Message			
12/24/2021	15:37:13	183	4.8	11.96	195.8				
12/24/2021	15:37:48	248	4.7	11.97	198.6				
12/24/2021	15:38:23	310	4.8	11.99	201.4				
12/24/2021	15:38:58	191	4.9	12.01	204.2				
12/24/2021	15:39:33	310	4.8	12.02	207.0				
12/24/2021	15:40:08	276	4.8	12.03	209.8				
12/24/2021	15:40:43	251	4.9	12.03	212.6				
12/24/2021	15:41:18	292	4.8	12.01	215.4				
12/24/2021	15:41:53	263	4.9	12.00	218.2				
12/24/2021	15:42:28	258	4.8	11.99	221.0				
12/24/2021	15:43:03	282	4.7	11.98	223.8				
12/24/2021	15:43:38	302	4.9	11.97	226.6				
12/24/2021	15:44:13	165	4.7	11.96	229.4				
12/24/2021	15:44:48	251	4.7	11.96	232.2				
12/24/2021	15:45:23	228	4.8	11.96	235.0				
12/24/2021	15:45:58	188	4.7	11.97	237.8				
12/24/2021	15:46:33	306	4.8	11.96	240.6				
12/24/2021	15:47:08	172	4.8	11.94	243.5				
12/24/2021	15:47:43	272	4.7	11.89	246.2				
12/24/2021	15:48:53	272	4.9	11.89	251.8				
12/24/2021	15:49:28	303	4.8	11.87	254.6				
12/24/2021	15:50:03	253	4.8	11.85	257.4				
12/24/2021	15:50:38	310	4.9	11.84	260.2				
12/24/2021	15:51:13	308	4.8	11.93	263.0				
12/24/2021	15:51:48	276	4.8	11.99	265.8				
12/24/2021	15:52:23	273	4.7	11.98	268.6				
12/24/2021	15:52:58	290	4.7	11.96	271.3				
12/24/2021	15:53:33	322	4.8	11.96	274.1				
12/24/2021	15:54:08	169	4.7	11.94	276.9				
12/24/2021	15:54:43	239	4.7	11.95	279.7				
12/24/2021	15:55:18	235	4.8	11.97	282.5				
12/24/2021	15:55:53	225	4.8	12.00	285.3				
12/24/2021	15:56:28	328	4.8	12.03	288.1				
12/24/2021	15:57:03	168	4.8	12.05	290.9				
12/24/2021	15:57:38	268	4.7	12.07	293.7				
12/24/2021	15:58:13	316	4.8	12.07	296.5				
12/24/2021	15:58:48	233	4.8	12.06	299.3				
12/24/2021	15:59:23	317	4.7	12.06	302.1				
12/24/2021	15:59:58	300	4.8	12.03	304.8				
12/24/2021	16:00:33	329	4.9	12.01	307.7				
12/24/2021	16:01:08	302	4.7	11.99	310.4				
12/24/2021	16:01:43	271	4.8	11.97	313.2				
12/24/2021	16:02:18	244	4.8	11.95	316.0				
12/24/2021	16:02:53	197	4.7	11.95	318.8				
12/24/2021	16:03:28	299	4.9	11.95	321.6				
12/24/2021	16:04:03	160	4.8	11.94	324.4				
12/24/2021	16:04:38	276	4.7	11.94	327.2				
12/24/2021	16:05:13	206	4.8	11.92	330.0				
12/24/2021	16:05:48	204	4.7	11.92	332.8				
12/24/2021	16:06:23	292	4.8	11.94	335.6				
12/24/2021	16:06:58	257	4.8	11.96	338.4				
12/24/2021	16:07:33	270	4.9	11.97	341.2				
12/24/2021	16:08:08	281	4.8	12.00	344.0				
12/24/2021	16:08:43	275	4.9	11.91	346.8				

Well		Field		Job Start		Customer		Job Number	
SBJ 13-9HZ		Wattenberg		Dec/24/2021		Oxy		EAJ7-02835	
Date	Time 24-hr clock	PRESSURE PSI	RATE B/M	DENSITY LB/G	Volume BBL	Message			
12/24/2021	16:09:53	284	4.9	12.01	352.4				
12/24/2021	16:10:28	305	4.9	12.00	355.1				
12/24/2021	16:11:03	163	4.8	12.00	357.9				
12/24/2021	16:11:08	286	4.8	12.00	358.3	End Lead Slurry			
12/24/2021	16:11:38	262	4.9	12.00	360.7				
12/24/2021	16:12:13	-11	0.0	12.21	361.5				
12/24/2021	16:12:48	-11	0.0	12.21	361.5				
12/24/2021	16:13:23	-11	0.0	12.22	361.5				
12/24/2021	16:13:58	-11	0.0	12.20	361.5				
12/24/2021	16:14:33	-10	0.0	12.19	361.5				
12/24/2021	16:15:08	-10	0.0	12.17	361.5				
12/24/2021	16:15:22	-3	0.5	12.05	361.6	Start Mixing Tail Slurry			
12/24/2021	16:15:43	116	3.1	13.60	362.3				
12/24/2021	16:16:18	414	5.2	13.64	365.0				
12/24/2021	16:16:53	329	6.3	13.55	368.3				
12/24/2021	16:17:28	333	6.2	13.55	372.0				
12/24/2021	16:18:03	322	6.2	13.57	375.6				
12/24/2021	16:18:38	309	6.2	13.56	379.2				
12/24/2021	16:19:13	339	6.2	13.56	382.8				
12/24/2021	16:19:48	315	6.2	13.56	386.5				
12/24/2021	16:20:23	348	6.3	13.56	390.1				
12/24/2021	16:20:58	316	6.2	13.56	393.8				
12/24/2021	16:21:33	340	6.2	13.57	397.4				
12/24/2021	16:22:08	307	6.2	13.58	401.0				
12/24/2021	16:22:43	328	6.2	13.57	404.7				
12/24/2021	16:23:18	321	6.3	13.56	408.3				
12/24/2021	16:23:53	338	6.2	13.56	411.9				
12/24/2021	16:24:28	315	6.2	13.53	415.6				
12/24/2021	16:25:38	303	6.3	13.55	422.9				
12/24/2021	16:26:13	309	6.2	13.54	426.5				
12/24/2021	16:26:48	303	6.3	13.54	430.2				
12/24/2021	16:27:23	290	6.2	13.54	433.8				
12/24/2021	16:27:58	313	6.2	13.55	437.4				
12/24/2021	16:28:33	299	6.2	13.55	441.1				
12/24/2021	16:29:08	342	6.2	13.56	444.7				
12/24/2021	16:29:43	302	6.2	13.55	448.4				
12/24/2021	16:30:18	330	6.3	13.55	452.0				
12/24/2021	16:30:53	308	6.2	13.56	455.6				
12/24/2021	16:31:28	323	6.2	13.56	459.3				
12/24/2021	16:32:03	317	6.2	13.56	462.9				
12/24/2021	16:32:38	306	6.2	13.56	466.6				
12/24/2021	16:33:13	317	6.2	13.56	470.2				
12/24/2021	16:33:48	312	6.2	13.56	473.9				
12/24/2021	16:34:23	317	6.2	13.57	477.5				
12/24/2021	16:34:58	297	6.2	13.58	481.1				
12/24/2021	16:35:33	325	6.2	13.59	484.8				
12/24/2021	16:36:08	275	6.3	13.51	488.4				
12/24/2021	16:36:43	318	6.2	13.52	492.1				
12/24/2021	16:37:18	305	6.3	13.52	495.7				
12/24/2021	16:37:53	318	6.2	13.52	499.3				
12/24/2021	16:38:28	319	6.2	13.53	503.0				
12/24/2021	16:39:03	303	6.2	13.63	506.6				
12/24/2021	16:39:38	344	6.3	13.59	510.3				
12/24/2021	16:40:13	302	6.2	13.58	513.9				

Well		Field		Job Start		Customer		Job Number	
SBJ 13-9HZ		Wattenberg		Dec/24/2021		Oxy		EAJ7-02835	
Date	Time 24-hr clock	PRESSURE PSI	RATE B/M	DENSITY LB/G	Volume BBL	Message			
12/24/2021	16:41:23	323	6.2	13.57	521.2				
12/24/2021	16:41:58	336	6.3	13.52	524.8				
12/24/2021	16:42:33	330	6.2	13.52	528.5				
12/24/2021	16:43:08	338	6.2	13.63	532.1				
12/24/2021	16:43:43	335	6.2	13.57	535.7				
12/24/2021	16:44:18	315	6.2	13.55	539.4				
12/24/2021	16:44:53	334	6.2	13.57	543.0				
12/24/2021	16:45:28	321	6.3	13.57	546.7				
12/24/2021	16:46:03	348	6.2	13.57	550.3				
12/24/2021	16:46:38	329	6.2	13.57	553.9				
12/24/2021	16:47:13	338	6.2	13.58	557.6				
12/24/2021	16:47:48	316	6.2	13.58	561.2				
12/24/2021	16:48:23	319	6.2	13.58	564.8				
12/24/2021	16:48:58	333	6.3	13.57	568.5				
12/24/2021	16:49:33	307	6.2	13.57	572.1				
12/24/2021	16:50:08	344	6.2	13.57	575.8				
12/24/2021	16:50:37	347	6.2	13.57	578.8	362 bbl; 1235 sacks			
12/24/2021	16:50:39	323	6.2	13.57	579.0	1.64 cuft/sk; 7.92 gal/sk			
12/24/2021	16:50:42	316	6.2	13.57	579.3	Top of Tail = 9000 ft			
12/24/2021	16:50:43	309	6.2	13.56	579.4				
12/24/2021	16:51:18	356	6.2	13.55	583.0				
12/24/2021	16:51:53	306	6.2	13.55	586.7				
12/24/2021	16:52:28	335	6.2	13.55	590.3				
12/24/2021	16:53:03	321	6.2	13.55	593.9				
12/24/2021	16:53:38	318	6.2	13.55	597.6				
12/24/2021	16:54:48	326	6.2	13.54	604.9				
12/24/2021	16:55:23	363	6.2	13.59	608.5				
12/24/2021	16:55:58	333	6.2	13.55	612.1				
12/24/2021	16:56:33	348	6.2	13.53	615.8				
12/24/2021	16:57:08	343	6.2	13.59	619.4				
12/24/2021	16:57:43	333	6.2	13.61	623.0				
12/24/2021	16:58:18	340	6.2	13.61	626.7				
12/24/2021	16:58:53	332	6.2	13.58	630.3				
12/24/2021	16:59:28	346	6.2	13.56	634.0				
12/24/2021	17:00:03	332	6.2	13.56	637.6				
12/24/2021	17:00:38	360	6.2	13.57	641.2				
12/24/2021	17:01:13	317	6.2	13.57	644.9				
12/24/2021	17:01:48	352	6.2	13.57	648.5				
12/24/2021	17:02:23	318	6.2	13.57	652.1				
12/24/2021	17:02:58	334	6.2	13.57	655.8				
12/24/2021	17:03:33	342	6.2	13.57	659.4				
12/24/2021	17:04:08	326	6.2	13.57	663.1				
12/24/2021	17:04:43	366	6.2	13.58	666.7				
12/24/2021	17:05:18	333	6.2	13.58	670.3				
12/24/2021	17:05:53	371	6.2	13.58	674.0				
12/24/2021	17:06:28	329	6.2	13.58	677.6				
12/24/2021	17:07:03	356	6.3	13.58	681.2				
12/24/2021	17:07:38	347	6.2	13.59	684.9				
12/24/2021	17:08:13	347	6.2	13.58	688.5				
12/24/2021	17:08:48	364	6.2	13.59	692.1				
12/24/2021	17:09:23	339	6.3	13.58	695.8				
12/24/2021	17:09:58	356	6.2	13.58	699.4				
12/24/2021	17:10:33	336	6.2	13.58	703.1				
12/24/2021	17:11:08	355	6.2	13.58	706.7				

Well		Field		Job Start		Customer		Job Number	
SBJ 13-9HZ		Wattenberg		Dec/24/2021		Oxy		EAJ7-02835	
Date	Time 24-hr clock	PRESSURE PSI	RATE B/M	DENSITY LB/G	Volume BBL	Message			
12/24/2021	17:12:18	216	5.8	13.59	713.8				
12/24/2021	17:12:53	143	4.4	13.58	717.0				
12/24/2021	17:13:28	199	5.5	13.58	720.0				
12/24/2021	17:14:03	251	5.5	13.58	723.2				
12/24/2021	17:14:14	228	5.5	13.58	724.2	End Tail Slurry			
12/24/2021	17:14:38	241	5.5	13.57	726.4				
12/24/2021	17:15:13	3	0.0	13.23	727.7				
12/24/2021	17:15:48	2	0.0	13.23	727.7				
12/24/2021	17:16:23	67	1.5	9.81	728.1				
12/24/2021	17:16:58	67	2.0	10.62	729.2				
12/24/2021	17:17:33	49	1.8	10.11	730.4				
12/24/2021	17:18:08	-5	0.3	8.48	730.9				
12/24/2021	17:18:43	59	2.1	9.30	731.9				
12/24/2021	17:19:18	58	2.1	9.46	733.1				
12/24/2021	17:19:53	212	3.8	9.36	734.8				
12/24/2021	17:20:23	-9	0.0	0.00	735.0	Washup			
12/24/2021	17:20:28	-9	0.0	0.00	735.0				
12/24/2021	17:21:03	-8	0.0	0.00	735.0				
12/24/2021	17:21:38	84	2.4	8.54	735.6				
12/24/2021	17:22:13	157	3.4	8.48	737.4				
12/24/2021	17:22:48	116	3.3	9.14	739.4				
12/24/2021	17:23:23	-11	0.0	0.00	740.1				
12/24/2021	17:23:36	113	4.2	6.37	740.6	Drop Top Plug			
12/24/2021	17:23:58	50	2.1	8.39	741.3				
12/24/2021	17:24:33	-9	0.0	8.44	741.7				
12/24/2021	17:25:08	29	2.8	8.43	741.8				
12/24/2021	17:25:43	41	3.2	8.45	744.0				
12/24/2021	17:25:45	-1	1.7	8.45	744.1	Start Displacement			
12/24/2021	17:26:18	102	5.6	8.44	746.6				
12/24/2021	17:26:53	134	5.9	8.44	749.9				
12/24/2021	17:27:28	114	6.3	8.46	753.5				
12/24/2021	17:28:03	124	6.3	8.45	757.2				
12/24/2021	17:28:38	124	6.4	8.46	760.9				
12/24/2021	17:29:13	118	6.3	8.43	764.6				
12/24/2021	17:29:48	117	6.4	8.42	768.3				
12/24/2021	17:30:23	122	6.3	8.42	772.0				
12/24/2021	17:31:33	115	6.4	8.42	779.4				
12/24/2021	17:32:08	124	6.3	8.42	783.0				
12/24/2021	17:32:43	120	6.3	8.42	786.7				
12/24/2021	17:33:18	118	6.3	8.42	790.4				
12/24/2021	17:33:53	503	6.1	8.42	794.0				
12/24/2021	17:34:28	505	6.2	8.42	797.6				
12/24/2021	17:35:03	510	6.1	8.42	801.2				
12/24/2021	17:35:38	558	6.2	8.42	804.8				
12/24/2021	17:36:13	595	6.1	8.42	808.4				
12/24/2021	17:36:48	605	6.1	8.42	812.0				
12/24/2021	17:37:23	665	6.1	8.42	815.6				
12/24/2021	17:37:58	659	6.1	8.42	819.1				
12/24/2021	17:38:33	696	6.1	8.42	822.7				
12/24/2021	17:39:08	716	6.1	8.42	826.3				
12/24/2021	17:39:43	779	6.1	8.42	829.9				
12/24/2021	17:40:18	848	6.1	8.42	833.5				
12/24/2021	17:40:53	891	6.1	8.42	837.1				
12/24/2021	17:41:28	897	6.1	8.42	840.7				

Well		Field		Job Start		Customer		Job Number	
SBJ 13-9HZ		Wattenberg		Dec/24/2021		Oxy		EAJ7-02835	
Date	Time 24-hr clock	PRESSURE PSI	RATE B/M	DENSITY LB/G	Volume BBL	Message			
12/24/2021	17:42:38	995	6.1	8.42	847.8				
12/24/2021	17:43:13	974	6.1	8.41	851.4				
12/24/2021	17:43:48	986	6.1	8.41	855.0				
12/24/2021	17:44:23	1044	6.1	8.41	858.5				
12/24/2021	17:44:58	1109	6.1	8.41	862.1				
12/24/2021	17:45:33	1193	6.1	8.41	865.7				
12/24/2021	17:46:08	1248	6.1	8.41	869.3				
12/24/2021	17:46:43	1264	6.1	8.41	872.8				
12/24/2021	17:47:18	1289	6.1	8.41	876.4				
12/24/2021	17:47:53	1338	6.1	8.41	880.0				
12/24/2021	17:48:28	1326	6.1	8.41	883.5				
12/24/2021	17:49:03	1383	6.1	8.41	887.1				
12/24/2021	17:49:38	1417	6.1	8.41	890.7				
12/24/2021	17:50:13	1451	6.1	8.41	894.2				
12/24/2021	17:50:48	1519	6.1	8.41	897.8				
12/24/2021	17:51:23	1569	6.1	8.41	901.3				
12/24/2021	17:51:58	1641	6.1	8.41	904.9				
12/24/2021	17:52:33	1678	6.1	8.41	908.4				
12/24/2021	17:53:08	1669	6.1	8.41	912.0				
12/24/2021	17:53:43	1653	6.1	8.41	915.5				
12/24/2021	17:54:18	1670	6.1	8.41	919.1				
12/24/2021	17:54:53	1655	6.1	8.41	922.6				
12/24/2021	17:55:28	1649	6.1	8.41	926.2				
12/24/2021	17:56:03	1668	6.1	8.41	929.7				
12/24/2021	17:56:38	1664	6.1	8.41	933.3				
12/24/2021	17:57:13	1744	6.1	8.41	936.8				
12/24/2021	17:57:48	1722	6.1	8.41	940.4				
12/24/2021	17:58:23	1752	6.1	8.41	943.9				
12/24/2021	17:58:58	1754	6.1	8.41	947.5				
12/24/2021	17:59:33	1749	6.1	8.41	951.1				
12/24/2021	18:00:43	1460	6.1	7.69	957.4				
12/24/2021	18:01:18	1734	6.3	8.41	960.9				
12/24/2021	18:01:53	1807	6.3	8.41	964.6				
12/24/2021	18:02:28	1762	6.2	8.41	968.2				
12/24/2021	18:03:03	1832	6.2	8.41	971.8				
12/24/2021	18:03:38	1805	6.2	8.41	975.5				
12/24/2021	18:04:13	1828	6.2	8.41	979.1				
12/24/2021	18:04:48	1843	6.2	8.41	982.7				
12/24/2021	18:05:23	1808	6.2	8.41	986.3				
12/24/2021	18:05:58	1862	6.2	8.41	990.0				
12/24/2021	18:06:33	1808	6.2	8.41	993.6				
12/24/2021	18:07:08	1905	6.2	8.41	997.2				
12/24/2021	18:07:43	1868	6.2	8.41	1000.8				
12/24/2021	18:08:18	1879	6.2	8.41	1004.5				
12/24/2021	18:08:53	1919	6.2	8.41	1008.1				
12/24/2021	18:09:28	1874	6.2	8.41	1011.7				
12/24/2021	18:10:03	1955	6.2	8.41	1015.3				
12/24/2021	18:10:38	1888	6.2	8.41	1018.9				
12/24/2021	18:11:13	1973	6.2	8.41	1022.6				
12/24/2021	18:11:48	1923	6.2	8.41	1026.2				
12/24/2021	18:12:23	1950	6.2	8.41	1029.8				
12/24/2021	18:12:58	1959	6.2	8.41	1033.4				
12/24/2021	18:13:33	1947	6.2	8.41	1037.0				
12/24/2021	18:14:08	2002	6.2	8.41	1040.7				

Well		Field		Job Start		Customer		Job Number	
SBJ 13-9HZ		Wattenberg		Dec/24/2021		Oxy		EAJ7-02835	
Date	Time 24-hr clock	PRESSURE PSI	RATE B/M	DENSITY LB/G	Volume BBL	Message			
12/24/2021	18:15:18	2033	6.2	8.41	1047.9				
12/24/2021	18:15:53	1993	6.2	8.41	1051.5				
12/24/2021	18:16:28	2013	6.2	8.41	1055.2				
12/24/2021	18:17:03	2061	6.2	8.41	1058.8				
12/24/2021	18:17:38	2025	6.2	8.41	1062.4				
12/24/2021	18:18:13	2088	6.2	8.41	1066.0				
12/24/2021	18:18:48	2023	6.2	8.41	1069.6				
12/24/2021	18:19:23	2114	6.2	8.41	1073.2				
12/24/2021	18:19:58	2059	6.2	8.41	1076.8				
12/24/2021	18:20:33	2109	6.2	8.41	1080.4				
12/24/2021	18:21:08	2129	6.2	8.41	1084.0				
12/24/2021	18:21:43	2093	6.1	8.41	1087.6				
12/24/2021	18:22:18	2133	6.1	8.41	1091.2				
12/24/2021	18:22:53	2088	6.1	8.41	1094.7				
12/24/2021	18:23:28	2174	6.1	8.41	1098.3				
12/24/2021	18:24:03	2096	6.1	8.41	1101.9				
12/24/2021	18:24:38	2178	6.1	8.41	1105.4				
12/24/2021	18:25:13	2136	6.1	8.41	1109.0				
12/24/2021	18:25:48	2186	6.1	8.41	1112.5				
12/24/2021	18:26:23	2178	6.0	8.41	1116.0				
12/24/2021	18:26:58	2148	6.1	8.41	1119.6				
12/24/2021	18:27:33	2205	6.0	8.41	1123.1				
12/24/2021	18:28:08	2151	6.0	8.41	1126.6				
12/24/2021	18:28:43	2237	6.0	8.41	1130.1				
12/24/2021	18:29:18	2141	6.0	8.41	1133.6				
12/24/2021	18:29:53	2239	6.0	8.41	1137.1				
12/24/2021	18:30:28	2174	6.0	8.41	1140.6				
12/24/2021	18:30:49	2223	6.0	8.41	1142.7	70 bbl Spacer to Surface			
12/24/2021	18:31:03	2225	6.0	8.41	1144.1				
12/24/2021	18:31:38	2190	6.0	8.41	1147.6				
12/24/2021	18:32:13	2232	6.0	8.41	1151.1				
12/24/2021	18:32:48	2219	6.0	8.41	1154.6				
12/24/2021	18:33:23	2197	6.0	8.41	1158.1				
12/24/2021	18:33:58	2240	6.0	8.41	1161.6				
12/24/2021	18:34:33	2194	6.0	8.41	1165.1				
12/24/2021	18:35:08	2266	6.0	8.41	1168.6				
12/24/2021	18:35:43	2186	6.0	8.41	1172.0				
12/24/2021	18:36:18	2251	6.0	8.41	1175.5				
12/24/2021	18:37:28	2272	6.0	8.41	1182.5				
12/24/2021	18:38:03	2206	6.0	8.41	1186.0				
12/24/2021	18:38:38	2237	6.0	8.41	1189.5				
12/24/2021	18:39:13	2244	6.0	8.41	1192.9				
12/24/2021	18:39:48	2227	6.0	8.41	1196.4				
12/24/2021	18:40:23	1681	2.1	8.41	1198.5				
12/24/2021	18:40:58	1581	2.2	8.41	1199.7				
12/24/2021	18:41:33	1610	2.1	8.41	1201.0				
12/24/2021	18:42:08	1549	2.1	8.41	1202.2				
12/24/2021	18:42:43	1630	2.1	8.41	1203.5				
12/24/2021	18:43:18	1538	2.1	8.41	1204.7				
12/24/2021	18:43:53	1634	2.1	8.41	1206.0				
12/24/2021	18:44:28	1561	2.1	8.41	1207.2				
12/24/2021	18:45:03	1620	2.1	8.41	1208.5				
12/24/2021	18:45:38	1603	2.2	8.41	1209.7				
12/24/2021	18:45:55	1714	2.1	8.41	1210.3	Bump Top Plug			

Well		Field		Job Start		Customer		Job Number	
SBJ 13-9HZ		Wattenberg		Dec/24/2021		Oxy		EAJ7-02835	
Date	Time 24-hr clock	PRESSURE PSI	RATE B/M	DENSITY LB/G	Volume BBL	Message			
12/24/2021	18:46:48	2416	0.0	8.42	1211.5				
12/24/2021	18:47:02	2441	0.0	8.41	1211.5	End Displacement; 468 bbl			
12/24/2021	18:47:23	2435	0.0	8.42	1211.5				
12/24/2021	18:47:58	2453	0.0	8.42	1211.5				
12/24/2021	18:48:33	2786	1.2	8.41	1212.0				
12/24/2021	18:49:08	3277	0.0	8.41	1212.8				
12/24/2021	18:49:43	3318	0.0	8.42	1212.8				
12/24/2021	18:50:18	3328	0.0	8.42	1212.8				
12/24/2021	18:50:53	3278	0.0	8.41	1212.8				
12/24/2021	18:51:28	3285	0.0	8.42	1212.8				
12/24/2021	18:52:03	3301	0.0	8.42	1212.8				
12/24/2021	18:52:38	3322	0.0	8.42	1212.8				
12/24/2021	18:53:13	3334	0.0	8.42	1212.8				
12/24/2021	18:53:48	3333	0.0	8.42	1212.8				
12/24/2021	18:54:23	3339	0.0	8.42	1212.8				
12/24/2021	18:54:29	3348	0.0	8.42	1212.8	Casing Test			
12/24/2021	18:54:58	3349	0.0	8.42	1212.8				
12/24/2021	18:55:33	3359	0.0	8.42	1212.8				
12/24/2021	18:56:08	3371	0.0	8.42	1212.8				
12/24/2021	18:56:43	3378	0.0	8.42	1212.8				
12/24/2021	18:57:18	3384	0.0	8.42	1212.8				
12/24/2021	18:57:53	3391	0.0	8.42	1212.8				
12/24/2021	18:58:28	3401	0.0	8.42	1212.8				
12/24/2021	18:59:03	3409	0.0	8.42	1212.8				
12/24/2021	18:59:38	3416	0.0	8.42	1212.8				
12/24/2021	19:00:13	3422	0.0	8.42	1212.8				
12/24/2021	19:00:48	3430	0.0	8.42	1212.8				
12/24/2021	19:01:23	3437	0.0	8.42	1212.8				
12/24/2021	19:01:58	3445	0.0	8.42	1212.8				
12/24/2021	19:02:33	3452	0.0	8.42	1212.8				
12/24/2021	19:03:08	3459	0.0	8.42	1212.8				
12/24/2021	19:03:43	3467	0.0	8.42	1212.8				
12/24/2021	19:04:18	3474	0.0	8.42	1212.8				
12/24/2021	19:04:29	3476	0.0	8.42	1212.8	Check Floats; 6 bbl Back			
12/24/2021	19:04:53	3432	0.0	8.42	1212.8				
12/24/2021	19:05:28	1946	0.0	8.42	1212.8				
12/24/2021	19:06:03	367	0.0	8.42	1212.8				
12/24/2021	19:06:38	-11	0.0	8.42	1212.8				
12/24/2021	19:07:13	-7	0.0	8.42	1212.8				
12/24/2021	19:07:48	7	0.0	8.42	1212.8				
12/24/2021	19:08:23	23	0.0	8.42	1212.8				
12/24/2021	19:08:58	-12	0.0	8.42	1212.8				
12/24/2021	19:09:33	-9	1.2	8.41	1212.8				
12/24/2021	19:10:08	229	0.0	8.42	1214.0				
12/24/2021	19:10:43	76	0.0	8.42	1214.0				
12/24/2021	19:11:18	230	5.5	8.42	1216.1				
12/24/2021	19:11:53	230	5.5	8.42	1219.3				
12/24/2021	19:12:28	-6	0.0	9.11	1220.8				
12/24/2021	19:13:03	-8	0.0	8.91	1220.8				
12/24/2021	19:13:38	-9	0.0	8.50	1220.8				
12/24/2021	19:14:13	-9	0.0	8.47	1220.8				
12/24/2021	19:14:48	-9	0.0	8.42	1220.8				
12/24/2021	19:15:23	-10	0.0	8.42	1220.8				
12/24/2021	19:15:58	-9	0.0	9.22	1221.3				

Well		Field		Job Start		Customer		Job Number	
SBJ 13-9HZ		Wattenberg		Dec/24/2021		Oxy		EAJ7-02835	
Date	Time 24-hr clock	PRESSURE PSI	RATE B/M	DENSITY LB/G	Volume BBL	Message			
12/24/2021	19:17:08	-9	0.0	8.65	1221.3				
12/24/2021	19:17:43	9	0.0	0.28	1221.3				
12/24/2021	19:18:18	13	0.0	0.05	1221.3				
12/24/2021	19:18:53	14	0.0	0.27	1221.5				
12/24/2021	19:19:28	14	0.0	0.00	1221.5				
12/24/2021	19:20:03	13	0.0	0.00	1221.5				
12/24/2021	19:20:38	14	0.0	0.02	1221.5				
12/24/2021	19:21:13	14	0.0	0.00	1221.5				
12/24/2021	19:21:48	14	0.0	0.00	1221.5				
12/24/2021	19:22:23	15	0.0	0.00	1221.5				
12/24/2021	19:22:58	14	0.0	0.00	1221.5				
12/24/2021	19:23:29	14	0.0	0.00	1221.5	End Job			
12/24/2021	19:23:33	13	0.0	0.00	1221.5				
12/24/2021	19:24:08	14	0.0	0.00	1221.5				
12/24/2021	19:24:43	14	0.0	0.00	1221.5				
12/24/2021	19:25:18	14	0.0	0.00	1221.5				

Post Job Summary

Average Pump Rates, bbl/min				Volume of Fluid Injected, bbl			
Slurry	N2	Mud	Maximum Rate	Total Slurry	Mud	Spacer	N2
5.2			18.4	1221.5	0.0	0.0	
Treating Pressure Summary, psi				Breakdown Fluid			
Maximum	Final	Average	Bump Plug to	Breakdown	Type	Volume	Density
6277	14	953				bbl	lb/gal
Avg. N2 Percent	Designed Slurry Volume		Displacement	Mix Water Temp	Cement Circulated to Surface?	Volume	
%	0.0 bbl		0.0 bbl	70 degF	<input type="checkbox"/>	bbl	
					Washed Thru Perfs	To	
					<input type="checkbox"/>	ft	
Customer or Authorized Representative			Schlumberger Supervisor		Circulation Lost	Job Completed	
Jason Laub			Grayland Balmer		<input type="checkbox"/>	<input checked="" type="checkbox"/>	
					-	-	