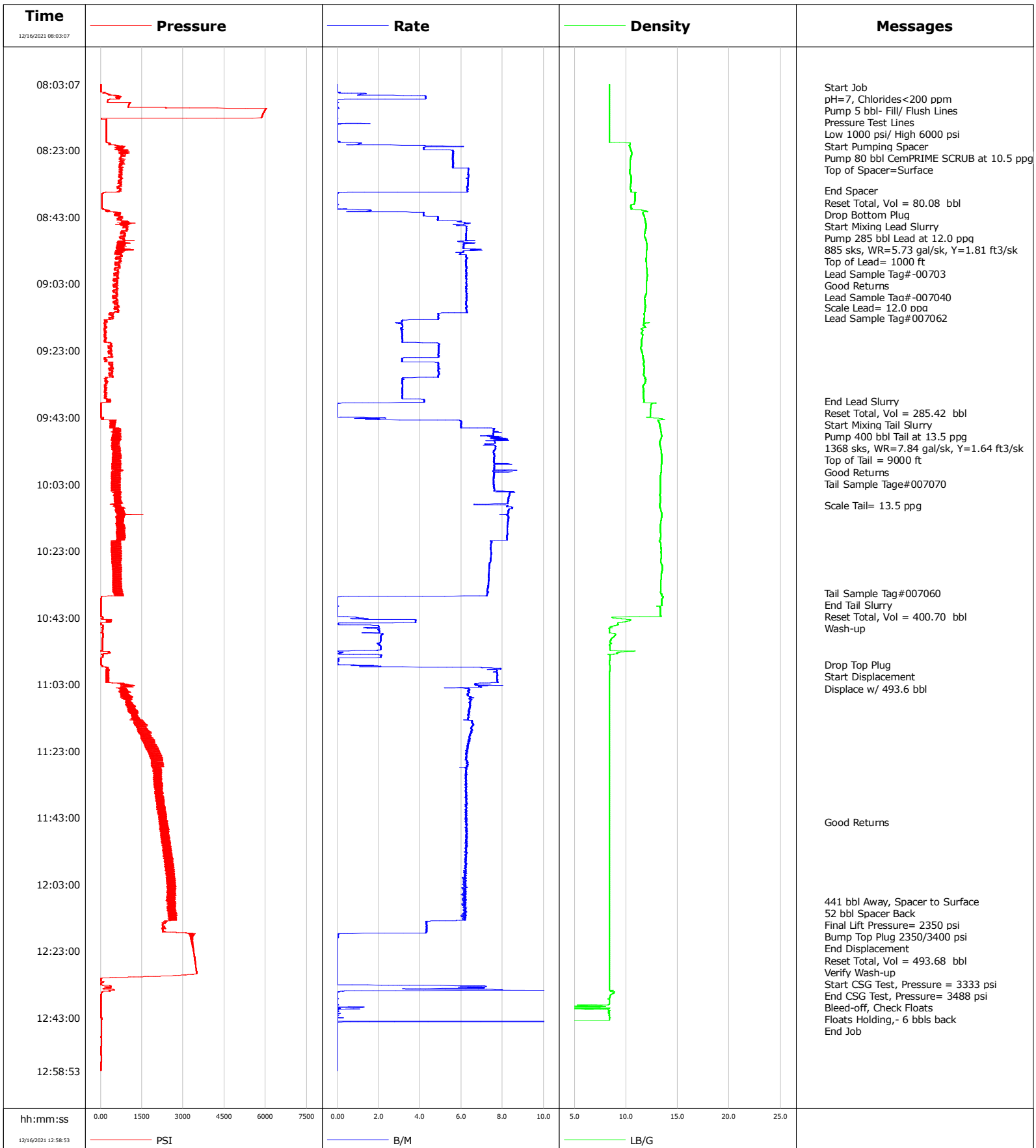


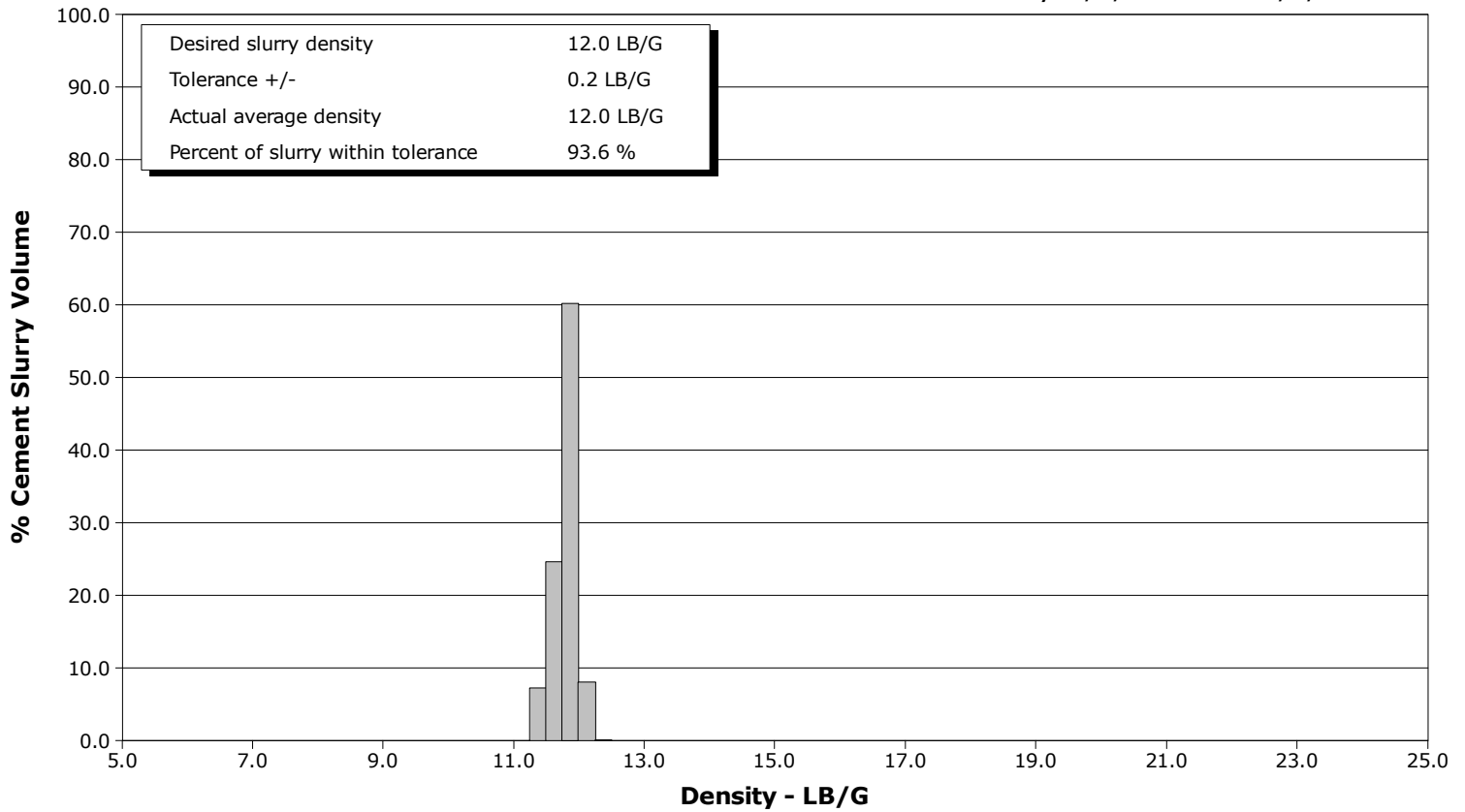
Well	SBJ 13-8HZ	Client	Anadarko
Field	Wattenberg	SIR No.	EAJ7-02797
Engineer	Thomas Bailey	Job Type	5 1/2" Production
Country	United States	Job Date	12-16-2021



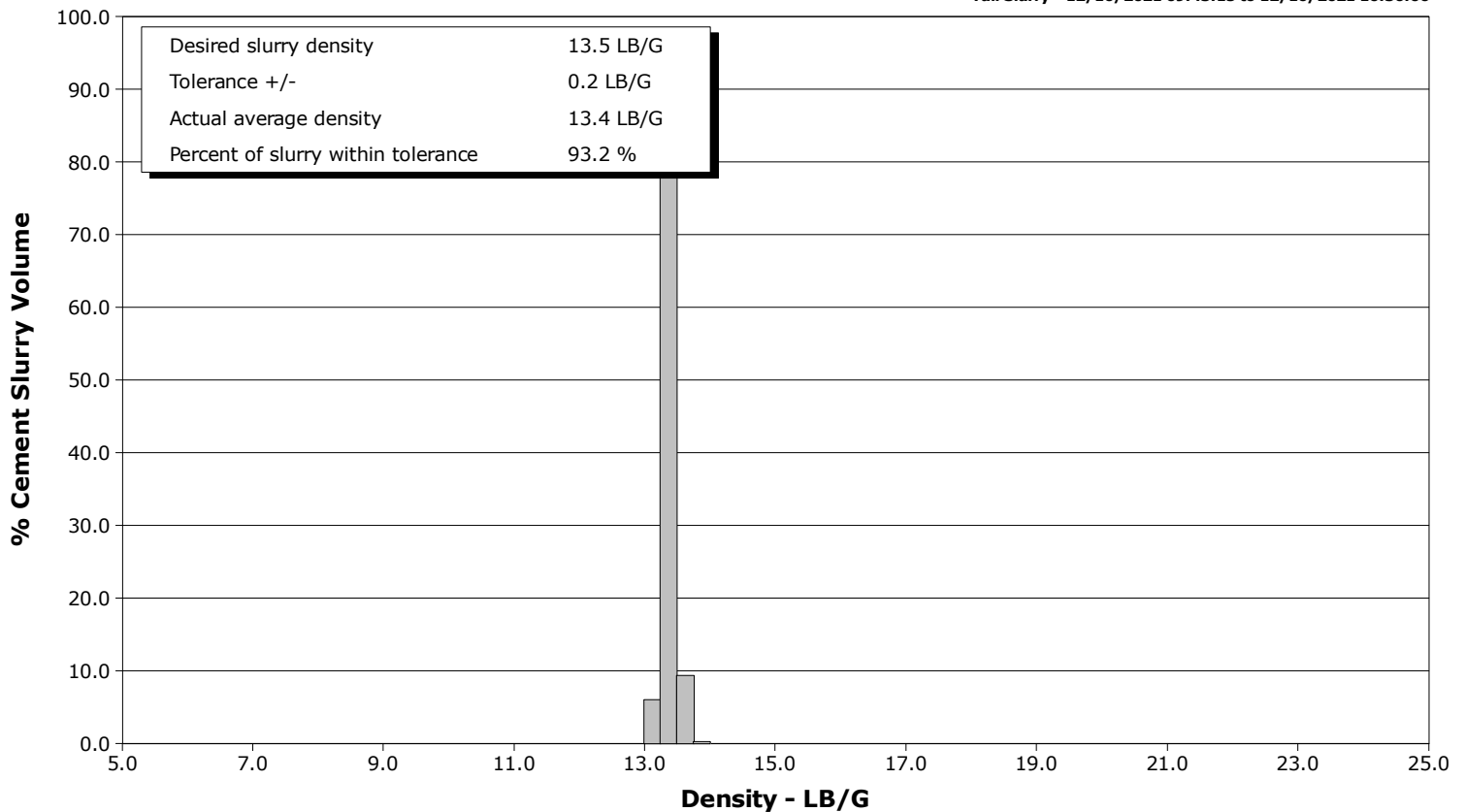
Well SBJ 13-8HZ
Field Wattenberg
Engineer Thomas Bailey
Country United States

Client Anadarko
SIR No. EAJ7-02797
Job Type 5 1/2" Production
Job Date 12-16-2021

Lead Slurry - 12/16/2021 08:43:19 to 12/16/2021 09:38:06



Tail Slurry - 12/16/2021 09:43:15 to 12/16/2021 10:36:06



				Customer			Job Number		
				Anadarko			EAJ7-02797		
Well		Location (legal)		Schlumberger Location			Job Start		
SBJ 13-8HZ 13-8HZ		P461					Dec/16/2021		
Field		Formation Name/Type		Deviation	Bit Size	Well MD	Well TVD		
Wattenberg				deg	in	21294.0 ft	6559.0 ft		
County		State/Province		BHP	BHST	BHCT	Pore Press. Gradient		
Weld		Colorado		psi	230 degF	230 degF	lb/gal		
Well Master		API/UWI							
0066441949		05-123-51602-00-00							
Rig Name	Drilled For	Service Via	Casing/Liner						
P461	Oil & Gas	Land	Depth, ft		Size, in	Weight, lb/ft	Grade	Thread	
Offshore Zone	Well Class	Well Type	1900.0	9.6	36.0				
N/a	New	Development	21282.0	5.5	17.0				
Drilling Fluid Type		Max. Density	Plastic Viscosity	Tubing/Drill Pipe					
Oil Mud		9.30 lb/gal	28.000 cP	T/D	Depth, ft	Size, in	Weight, lb/ft	Grade	Thread
Service Line	Job Type								
Cementing	5 1/2" Production								
Max. Allowed Tub. Press	Max. Allowed Ann. Press	WH Connection	Perforations/Open Hole						
psi	psi	Single Cement head	Top, ft	Bottom, ft	shot/ft	No. of Shots	Total Interval		
			ft	ft			ft		
			ft	ft			Diameter		
			ft	ft			in		
Service Instructions		Treat Down	Displacement	Packer Type	Packer Depth				
Cement 5 1/2" CSG to 21,282 ft Pump 80 bbl CemPRIME SCRUB at 10.5 ppg Pump 283 bbl Lead at 12.0 ppg (885 sk, WR=5.73 al/sk, Y=1.81ft3/sk) Pump 400 bbl Tail at 13.5 ppg (1368 sk, WR=7.84 gal/sk, Y=1.64 ft3/sk) Disp. w/ 493.6 bbls 52 bbls Spacer Back		Casing	493.6 bbl		ft				
		Tubing Vol.	Casing Vol.	Annular Vol.	Openhole Vol.				
		bbl	494.6 bbl	709.4 bbl	91.0 bbl				
Casing/Tubing Secured		1 Hole Vol. Circulated prior to Cement	Casing Tools			Squeeze Job			
<input type="checkbox"/>		<input type="checkbox"/>							
Lift Pressure		Shoe Type	Shoe Depth	Stage Tool Type	Stage Tool Depth	Tail Pipe Size	Tail Pipe Depth		
2350 psi		Float	21282.0 ft		ft	in	ft		
Pipe Rotated		Pipe Reciprocated	Shoe Type	Shoe Depth	Stage Tool Type	Stage Tool Depth	Tail Pipe Size	Tail Pipe Depth	
<input type="checkbox"/>		<input type="checkbox"/>	Float	21282.0 ft		ft	in	ft	
No. Centralizers		Top Plugs	Bottom Plugs	Stage Tool Type	Stage Tool Depth	Tail Pipe Size	Tail Pipe Depth	Tail Pipe Depth	
		1	1		ft	in	ft	ft	
Cement Head Type		Arrived on Location	Leave Location	Collar Type	Collar Depth	Sqz. Total Vol.			
Double		Dec/16/2021 02:00	Dec/16/2021 13:00	Float	21238.0 ft	bbl			
Job Scheduled For	Arrived on Location	Leave Location	Collar Type	Collar Depth	Sqz. Total Vol.				
Dec/16/2021 03:00	Dec/16/2021 02:00	Dec/16/2021 13:00	Float	21238.0 ft	bbl				
Date	Time 24-hr clock	Treating Pressure PSI	Flow Rate B/M	Density LB/G	Volume NULL	Message			
12/16/2021	08:03:07	6	0.0	8.38	0	Started Acquisition			
12/16/2021	08:04:00	3	0.0	8.38	0	Start Job			
12/16/2021	08:05:39	145	0.1	8.37	0	Pump 5 bbl- Fill/ Flush Lines			
12/16/2021	08:06:27	360	1.2	8.38	0				
12/16/2021	08:08:46	1064	0.0	8.37	0	Pressure Test Lines			
12/16/2021	08:09:47	1005	0.0	8.38	0				
12/16/2021	08:09:59	996	0.0	8.37	0	Low 1000 psi/ High 6000 psi			
12/16/2021	08:13:07	5848	0.0	8.37	0				
12/16/2021	08:16:27	207	0.0	8.38	0				
12/16/2021	08:19:47	207	0.0	8.37	0				
12/16/2021	08:20:27	205	0.1	8.37	100	Start Pumping Spacer			
12/16/2021	08:22:00	716	4.3	10.35	74	Pump 80 bbl CemPRIME SCRUB at 10.5 ppg			
12/16/2021	08:23:07	652	5.6	10.47	26				
12/16/2021	08:25:00	730	5.6	10.46	13	Top of Spacer=Surface			
12/16/2021	08:26:27	724	5.6	10.39	15				
12/16/2021	08:29:47	756	6.3	10.32	22				
12/16/2021	08:33:07	734	6.3	10.44	16				
12/16/2021	08:35:00	722	6.3	10.47	48	End Spacer			
12/16/2021	08:35:20	621	6.3	10.47	66	Reset Total, Vol = 80.08 bbl			
12/16/2021	08:36:27	46	0.0	10.86	0				
12/16/2021	08:39:47	42	0.0	10.45	0				

Well			Field		Job Start	Customer	Job Number
SBJ 13-8HZ 13-8HZ			Wattenberg		Dec/16/2021	Anadarko	EAJ7-02797
Date	Time 24-hr clock	Treating Pressure PSI	Flow Rate B/M	Density LB/G	Volume NULL	Message	
12/16/2021	08:43:07	797	4.9	11.78	25		
12/16/2021	08:43:19	614	4.9	11.79	27	Start Mixing Lead Slurry	
12/16/2021	08:45:25	788	5.9	11.92	41	Pump 285 bbl Lead at 12.0 ppg	
12/16/2021	08:45:44	993	6.2	11.92	42	885 sks, WR=5.73 gal/sk, Y=1.81 ft3/sk	
12/16/2021	08:46:12	856	6.2	11.91	43	Top of Lead= 1000 ft	
12/16/2021	08:46:27	958	6.2	11.90	43		
12/16/2021	08:49:47	856	6.2	11.90	48		
12/16/2021	08:51:00	717	6.1	11.99	47	Lead Sample Tag#-00703	
12/16/2021	08:53:07	629	6.1	11.97	48		
12/16/2021	08:56:27	717	6.2	11.94	50		
12/16/2021	08:57:33	670	6.2	11.98	51	Good Returns	
12/16/2021	08:59:47	626	6.3	12.02	51		
12/16/2021	09:03:00	612	6.2	11.95	48	Lead Sample Tag#-007040	
12/16/2021	09:03:07	590	6.3	11.95	48		
12/16/2021	09:06:27	441	6.3	11.88	48		
12/16/2021	09:09:47	486	6.3	11.84	54		
12/16/2021	09:10:05	527	6.2	11.84	54	Scale Lead= 12.0 ppg	
12/16/2021	09:13:07	305	4.9	11.77	51		
12/16/2021	09:13:10	367	4.9	11.76	51	Lead Sample Tag#007062	
12/16/2021	09:16:27	128	3.1	11.46	50		
12/16/2021	09:19:47	153	3.1	11.49	31		
12/16/2021	09:23:07	338	4.9	11.49	41		
12/16/2021	09:26:27	398	4.2	11.72	50		
12/16/2021	09:29:47	427	4.9	11.71	57		
12/16/2021	09:33:07	217	3.1	11.71	48		
12/16/2021	09:36:27	194	3.1	11.67	39		
12/16/2021	09:38:06	376	4.2	11.70	64	End Lead Slurry	
12/16/2021	09:38:37	64	2.5	11.97	89	Reset Total, Vol = 285.42 bbl	
12/16/2021	09:39:47	8	0.0	12.39	0		
12/16/2021	09:43:07	93	2.2	12.42	47		
12/16/2021	09:43:15	96	2.3	12.86	46	Start Mixing Tail Slurry	
12/16/2021	09:43:18	21	1.5	13.01	45	Pump 400 bbl Tail at 13.5 ppg	
12/16/2021	09:43:49	431	4.8	13.05	44	1368 sks, WR=7.84 gal/sk, Y=1.64 ft3/sk	
12/16/2021	09:44:30	486	6.0	13.19	32	Top of Tail = 9000 ft	
12/16/2021	09:46:27	520	7.6	13.32	26		
12/16/2021	09:49:47	607	8.2	13.33	35		
12/16/2021	09:53:07	689	7.6	13.40	38		
12/16/2021	09:54:52	475	7.6	13.44	37	Good Returns	
12/16/2021	09:56:27	552	7.6	13.44	37		
12/16/2021	09:59:47	590	7.6	13.36	36		
12/16/2021	10:00:00	732	7.6	13.34	36	Tail Sample Tage#007070	
12/16/2021	10:03:07	546	7.6	13.30	35		
12/16/2021	10:06:27	695	8.3	13.24	37		
12/16/2021	10:09:11	472	6.8	13.26	43	Scale Tail= 13.5 ppg	
12/16/2021	10:09:47	676	8.2	13.25	42		
12/16/2021	10:13:07	711	8.3	13.42	36		
12/16/2021	10:16:27	687	8.2	13.32	35		
12/16/2021	10:19:47	638	8.2	13.27	35		
12/16/2021	10:23:07	772	7.4	13.38	35		
12/16/2021	10:26:27	657	7.4	13.36	34		
12/16/2021	10:29:47	581	7.3	13.42	36		
12/16/2021	10:33:07	518	7.3	13.34	35		
12/16/2021	10:35:42	476	7.3	13.36	38	Tail Sample Tag#007060	
12/16/2021	10:36:06	565	7.2	13.44	60	End Tail Slurry	

Well			Field		Job Start	Customer	Job Number
SBJ 13-8HZ 13-8HZ			Wattenberg		Dec/16/2021	Anadarko	EAJ7-02797
Date	Time 24-hr clock	Treating Pressure PSI	Flow Rate B/M	Density LB/G	Volume NULL	Message	
12/16/2021	10:36:44	33	0.3	13.59	0	Reset Total, Vol = 400.70 bbl	
12/16/2021	10:39:47	14	0.0	13.30	0		
12/16/2021	10:40:00	13	0.0	13.25	0	Wash-up	
12/16/2021	10:43:07	73	1.0	8.70	38		
12/16/2021	10:46:27	78	2.0	8.39	38		
12/16/2021	10:49:47	70	2.1	8.51	58		
12/16/2021	10:53:07	8	0.0	10.93	0		
12/16/2021	10:56:27	9	0.0	8.39	0		
12/16/2021	10:57:10	9	0.0	8.38	0	Drop Top Plug	
12/16/2021	10:57:15	22	0.3	8.39	0	Start Displacement	
12/16/2021	10:59:47	200	7.7	8.38	0		
12/16/2021	11:03:07	966	6.8	8.38	0		
12/16/2021	11:03:13	785	6.8	8.38	0	Displace w/ 493.6 bbl	
12/16/2021	11:06:27	1129	6.3	8.38	0		
12/16/2021	11:09:47	962	6.4	8.38	0		
12/16/2021	11:13:07	1154	6.3	8.38	0		
12/16/2021	11:16:27	1464	6.5	8.38	0		
12/16/2021	11:19:47	1811	6.3	8.38	0		
12/16/2021	11:23:07	1728	6.3	8.38	0		
12/16/2021	11:26:27	2043	6.3	8.38	0		
12/16/2021	11:29:47	2202	6.2	8.38	0		
12/16/2021	11:33:07	1936	6.2	8.38	0		
12/16/2021	11:36:27	2094	6.3	8.38	0		
12/16/2021	11:39:47	2099	6.2	8.38	0		
12/16/2021	11:43:07	2376	6.2	8.38	0		
12/16/2021	11:44:23	2233	6.2	8.38	0	Good Returns	
12/16/2021	11:46:27	2153	6.2	8.38	0		
12/16/2021	11:49:47	2251	6.2	8.37	0		
12/16/2021	11:53:07	2416	6.2	8.37	0		
12/16/2021	11:56:27	2442	6.2	8.37	0		
12/16/2021	11:59:47	2463	6.2	8.37	0		
12/16/2021	12:03:07	2689	6.2	8.37	0		
12/16/2021	12:06:27	2408	6.1	8.37	0		
12/16/2021	12:08:00	2619	6.2	8.37	0	441 bbl Away, Spacer to Surface	
12/16/2021	12:09:47	2482	6.2	8.37	0		
12/16/2021	12:10:00	2416	6.1	8.37	0	52 bbl Spacer Back	
12/16/2021	12:13:07	2693	6.1	8.37	0		
12/16/2021	12:13:44	2567	6.2	8.37	0	Final Lift Pressure= 2350 psi	
12/16/2021	12:16:27	2238	4.3	8.37	0		
12/16/2021	12:17:15	2269	4.3	8.37	0	Bump Top Plug 2350/3400 psi	
12/16/2021	12:17:16	2268	4.3	8.37	0	End Displacement	
12/16/2021	12:17:25	2746	4.3	8.37	0	Reset Total, Vol = 493.68 bbl	
12/16/2021	12:18:00	3216	0.0	8.37	0	Verify Wash-up	
12/16/2021	12:18:30	3333	0.0	8.37	0	Start CSG Test, Pressure = 3333 psi	
12/16/2021	12:19:47	3291	0.0	8.37	0		
12/16/2021	12:23:07	3379	0.0	8.38	0		
12/16/2021	12:26:27	3437	0.0	8.38	0		
12/16/2021	12:29:33	3488	0.0	8.38	0	End CSG Test, Pressure= 3488 psi	
12/16/2021	12:29:47	3492	0.0	8.38	0		
12/16/2021	12:30:10	3080	0.0	8.38	0	Bleed-off, Check Floats	
12/16/2021	12:30:20	2731	0.0	8.38	0	Floats Holding, - 6 bbls back	
12/16/2021	12:32:45	7	0.0	8.38	0	End Job	
12/16/2021	12:33:07	5	0.0	8.38	0		
12/16/2021	12:36:27	15	0.0	8.46	0		

Well		Field		Job Start		Customer		Job Number	
SBJ 13-8HZ 13-8HZ		Wattenberg		Dec/16/2021		Anadarko		EAJ7-02797	
Date	Time 24-hr clock	Treating Pressure PSI	Flow Rate B/M	Density LB/G	Volume NULL	Message			
12/16/2021	12:43:07	47	0.0	8.36	0				
12/16/2021	12:46:27	23	0.0	0.09	0				
12/16/2021	12:49:47	32	0.0	0.05	0				
12/16/2021	12:53:07	9	0.0	0.02	0				

Post Job Summary

Average Pump Rates, bbl/min					Volume of Fluid Injected, bbl			
Slurry	N2	Mud	Maximum Rate	Total Slurry	Mud	Spacer	N2	
5.7			25.0	684.8	0.0	80.0		
Treating Pressure Summary, psi					Breakdown Fluid			
Maximum	Final	Average	Bump Plug to	Breakdown	Type	Volume	Density	
6048	3	985	2400			bbl	lb/gal	
Avg. N2 Percent	Designed Slurry Volume	Displacement	Mix Water Temp	Cement Circulated to Surface?	Volume			
%	684.8 bbl	493.6 bbl	68 degF	<input type="checkbox"/>	bbl		To	ft
Customer or Authorized Representative		Schlumberger Supervisor		Washed Thru Perfs	Circulation Lost		Job Completed	
Steve Martinez		Thomas Bailey		<input type="checkbox"/>	-		- <input checked="" type="checkbox"/>	