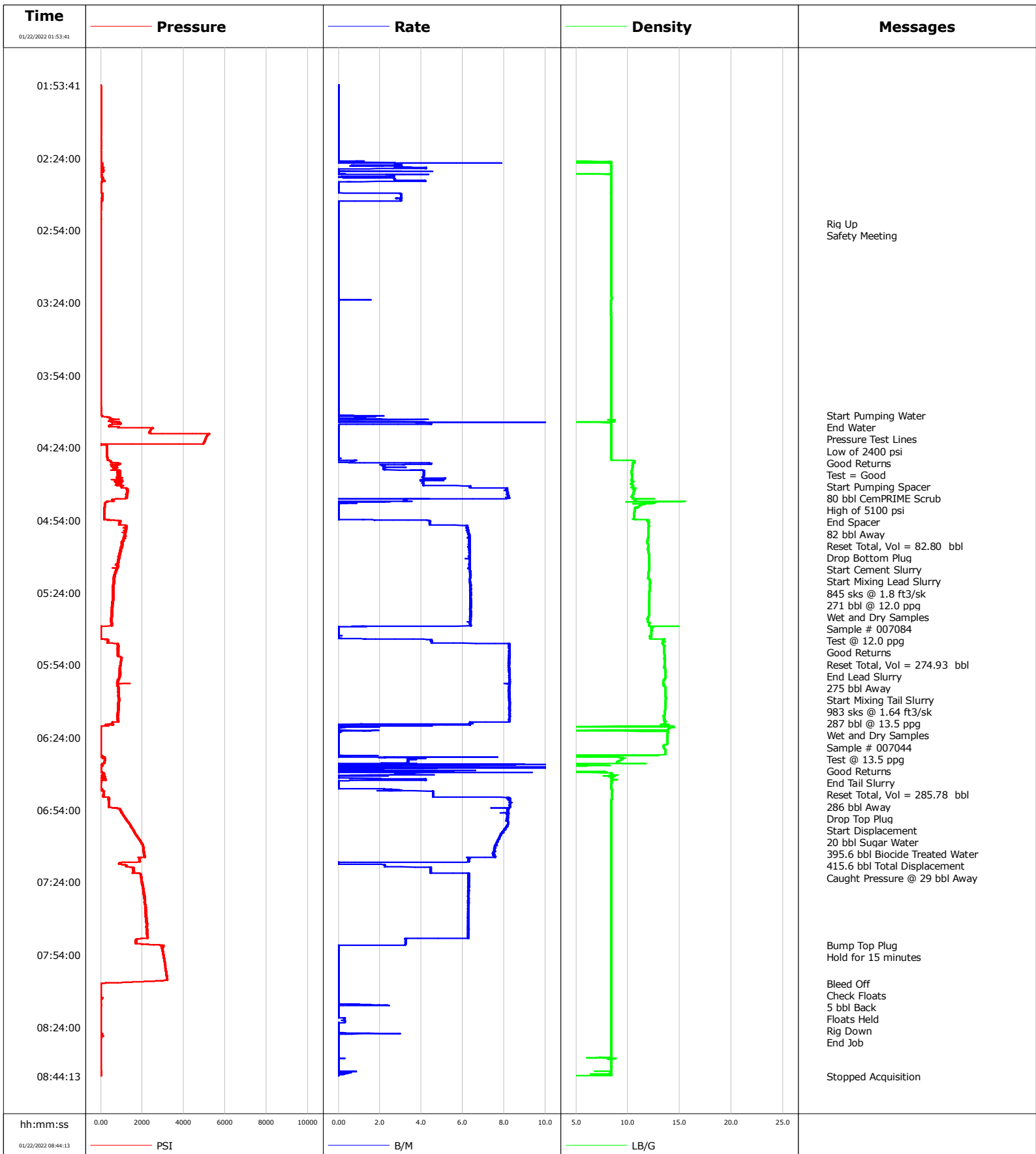


Well	SBJ 13-5HZ	Client	Oxy
Field	DJ	SIR No.	EAJ7-02840
Engineer	Matt Leiker	Job Type	Cem Prod Casing
Country	United States	Job Date	01-22-2022



				Customer			Job Number			
				Oxy			EAJ7-02840			
Well		Location (legal)			Schlumberger Location			Job Start		
SBJ 13-5HZ								Jan/22/2022		
Field		Formation Name/Type		Deviation	Bit Size		Well MD	Well TVD		
DJ				deg	in		17920.0 ft	6840.0 ft		
County		State/Province		BHP	BHST	BHCT	Pore Press. Gradient			
Weld		Colorado		psi	230 degF	230 degF	lb/gal			
Well Master		API/UWI								
0066441942		05-123-51597-00-00								
Rig Name	Drilled For	Service Via		Casing/Liner						
Precision 461	Oil	Land		Depth, ft	Size, in	Weight, lb/ft	Grade	Thread		
				17920.0	5.5	17.0	P110	8RD		
Offshore Zone	Well Class	Well Type		0.0	0.0	0.0				
	Old	Development								
Drilling Fluid Type		Max. Density	Plastic Viscosity		Tubing/Drill Pipe					
		lb/gal	cP		T/D	Depth, ft	Size, in	Weight, lb/ft	Grade	Thread
Service Line	Job Type									
Cementing	Cem Prod Casing									
Max. Allowed Tub. Press	Max. Allowed Ann. Press		WH Connection		Perforations/Open Hole					
psi	psi		Double Cement head		Top, ft	Bottom, ft	shot/ft	No. of Shots	Total Interval	
					ft	ft			ft	
					ft	ft			Diameter	
					ft	ft			in	
Service Instructions		Treat Down	Displacement		Packer Type		Packer Depth			
Rate and Density Checked Pump 80 bbl CemPRIME Scrub 845 sks Lead @ 1.8 ft3/sk @ 271 bbl @ 12.0 ppg 983 sks Tail @ 1.64 ft3/sk @ 287 bbl @ 13.5 ppg Displace 415.6 bbl Biocide Treated Water Estimated TOC @ 1000' 50 bbl Spacer Back to Surface ISIP 1650 psi Bumped Top Plug to 3000 psi Floats Held 5 bbl Back		Casing	415.6 bbl				ft			
		Tubing Vol.	Casing Vol.		Annular Vol.		Openhole Vol.			
		bbl	bbl		bbl		bbl			
Casing/Tubing Secured		1 Hole Vol. Circulated prior to Cement	Casing Tools			Squeeze Job				
<input checked="" type="checkbox"/>		<input checked="" type="checkbox"/>								
Lift Pressure		Shoe Type	Shoe Depth		Squeeze Type					
psi		Float	17920.0 ft							
Pipe Rotated		Pipe Reciprocated	Stage Tool Type			Tool Depth			ft	
<input type="checkbox"/>		<input type="checkbox"/>								
Cement Head Type		Stage Tool Depth	Tail Pipe Size							
		ft	in							
Job Scheduled For		Arrived on Location		Leave Location		Collar Type		Tail Pipe Depth		
Jan/22/2022		Jan/22/2022		Jan/22/2022		Float		ft		
						Collar Depth		Sqz. Total Vol.		
						17875.0 ft		bbl		
Date	Time 24-hr clock	Treating Pressure PSI	Flow Rate B/M	Density LB/G	Volume BBL	Message				
01/22/2022	01:53:41	-0	0.0	0.00	0.0	Started Acquisition				
01/22/2022	02:51:08	-1	0.0	8.39	25.4	Rig Up				
01/22/2022	02:51:42	-1	0.0	8.40	25.4	Safety Meeting				
01/22/2022	04:10:32	23	0.0	8.40	25.4	Start Pumping Water				
01/22/2022	04:14:22	537	0.9	8.40	31.6	End Water				
01/22/2022	04:15:17	396	0.0	8.40	31.6	Pressure Test Lines				
01/22/2022	04:15:46	1998	0.0	8.40	31.6	Low of 2400 psi				
01/22/2022	04:18:12	4624	0.0	8.40	31.6	Good Returns				
01/22/2022	04:22:00	4968	0.0	8.40	31.6	Test = Good				
01/22/2022	04:29:10	324	0.0	8.40	31.6	Start Pumping Spacer				
01/22/2022	04:30:00	523	0.6	10.62	32.2	80 bbl CemPRIME Scrub				
01/22/2022	04:45:52	560	3.3	10.75	112.6	End Spacer				
01/22/2022	04:46:00	552	3.2	10.71	113.1	82 bbl Away				
01/22/2022	04:47:48	181	0.0	11.25	114.4	Reset Total, Vol = 82.80 bbl				
01/22/2022	04:53:00	154	0.0	10.58	114.4	Drop Bottom Plug				
01/22/2022	04:53:46	152	0.0	10.79	114.4	Start Cement Slurry				
01/22/2022	04:54:00	506	2.7	11.97	114.7	Start Mixing Lead Slurry				
01/22/2022	05:39:01	-8	0.0	12.26	389.3	Reset Total, Vol = 274.93 bbl				
01/22/2022	05:39:02	-8	0.0	12.23	389.3	275 bbl Away				
01/22/2022	05:43:03	-3	0.1	12.17	389.3	Start Mixing Tail Slurry				
01/22/2022	05:44:00	321	4.5	13.41	392.5	983 sks @ 1.64 ft3/sk				

Well		Field		Job Start		Customer		Job Number	
SBJ 13-5HZ		DJ		Jan/22/2022		Oxy		EAJ7-02840	
Date	Time 24-hr clock	Treating Pressure PSI	Flow Rate B/M	Density LB/G	Volume BBL	Message			
01/22/2022	06:19:33	5	0.0	0.91	675.1	Reset Total, Vol = 285.78 bbl			
01/22/2022	06:20:00	-5	0.1	13.99	675.2	286 bbl Away			
01/22/2022	06:42:00	19	0.0	8.43	698.9	Drop Top Plug			
01/22/2022	06:45:14	-6	0.0	8.42	698.9	Start Displacement			
01/22/2022	06:46:00	63	3.0	8.46	700.8	20 bbl Sugar Water			
01/22/2022	06:53:05	381	8.3	8.42	748.5	Caught Pressure @ 29 bbl Away			
01/22/2022	07:50:02	2903	3.2	8.41	1115.9	Bump Top Plug			
01/22/2022	07:51:00	2944	0.0	8.41	1116.1	Hold for 15 minutes			
01/22/2022	08:05:52	41	0.0	8.42	1116.1	Bleed Off			
01/22/2022	08:06:00	-5	0.0	8.42	1116.1	Check Floats			
01/22/2022	08:07:00	-11	0.0	8.42	1116.1	Rig Down			

Post Job Summary

Average Pump Rates, bbl/min					Volume of Fluid Injected, bbl			
Slurry	N2	Mud	Maximum Rate	Total Slurry	Mud	Spacer	N2	
6.0			25.0	516.0	0.0	82.0		
Treating Pressure Summary, psi					Breakdown Fluid			
Maximum	Final	Average	Bump Plug to	Breakdown	Type	Volume	Density	
5234	0	1070				bbl	lb/gal	
Avg. N2 Percent	Designed Slurry Volume	Displacement	Mix Water Temp	Cement Circulated to Surface?	<input type="checkbox"/>	Volume	bbl	
%	512.0 bbl	415.6 bbl	72 degF	Washed Thru Perfs	<input type="checkbox"/>	To	ft	
Customer or Authorized Representative	Schlumberger Supervisor			Circulation Lost	<input type="checkbox"/>	Job Completed	<input checked="" type="checkbox"/>	
David Cornette	Matt Leiker			-		-		