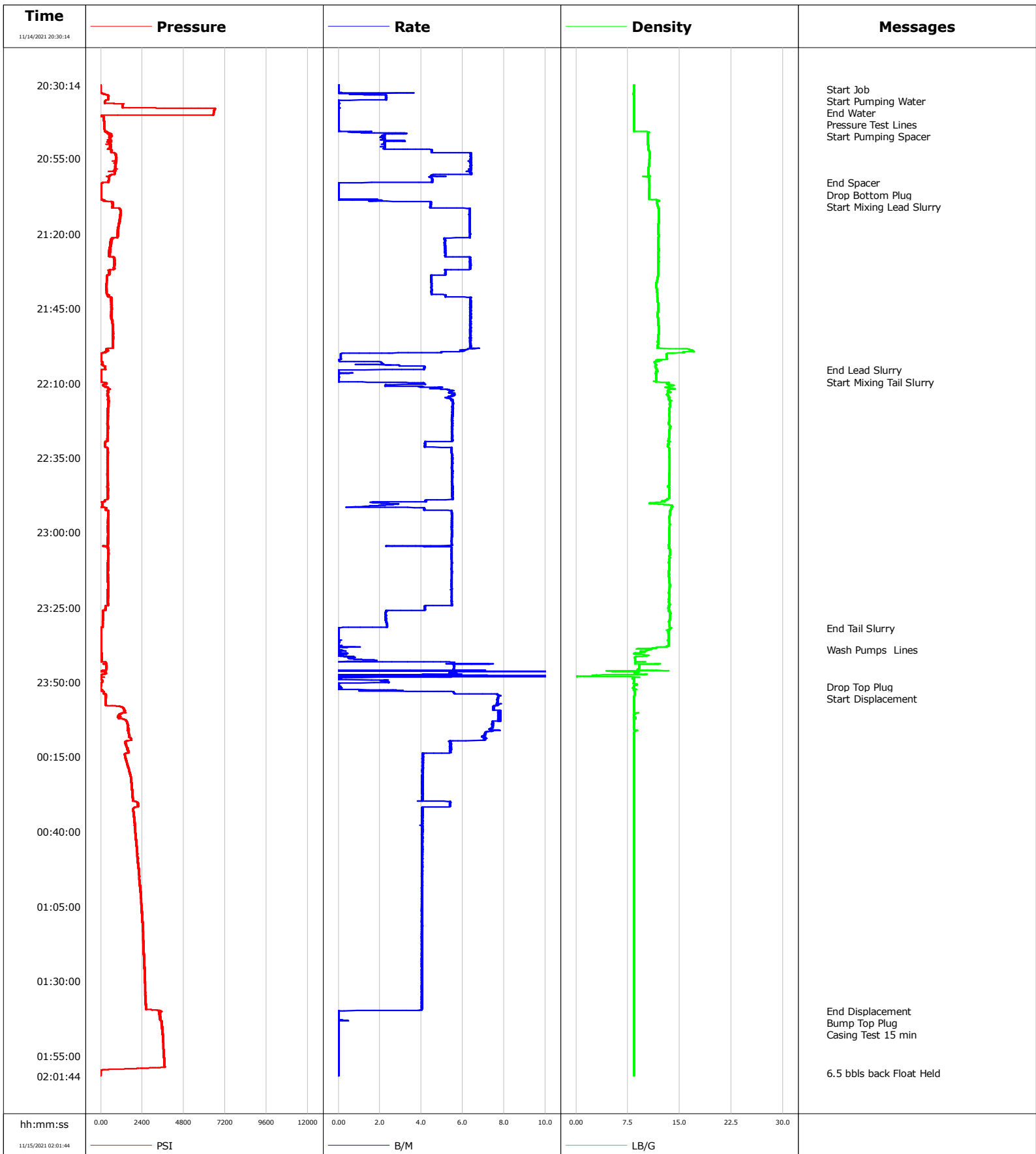


Well	SBJ 13-3HZ	Client	OXY
Field	Wattenburg	SIR No.	EAJ7-02705
Engineer	R Pippin	Job Type	Production
Country	United States	Job Date	11-14-2021



				Customer			Job Number		
				OXY			EAJ7-02705		
Well		Location (legal)			Schlumberger Location		Job Start		
SBJ 13-3HZ					Cheyenne		Nov/14/2021		
Field		Formation Name/Type		Deviation	Bit Size	Well MD	Well TVD		
Wattenburg				deg	in	21493.0 ft	6528.0 ft		
County		State/Province		BHP	BHST	BHCT	Pore Press. Gradient		
Weld		Colorado		psi	degF	degF	lb/gal		
Well Master		API/UWI							
Rig Name	Drilled For	Service Via	Casing/Liner						
	Oil & Gas	Land	Depth, ft	Size, in	Weight, lb/ft	Grade	Thread		
Offshore Zone	Well Class	Well Type	21483.0	5.5	17.0				
	New	Development	0.0	0.0	0.0				
Drilling Fluid Type		Max. Density	Plastic Viscosity	Tubing/Drill Pipe					
		lb/gal	cP	T/D	Depth, ft	Size, in	Weight, lb/ft	Grade	Thread
Service Line	Job Type								
Cementing	Production								
Max. Allowed Tub. Press	Max. Allowed Ann. Press	WH Connection	Perforations/Open Hole						
psi	psi	Double Cement head	Top, ft	Bottom, ft	shot/ft	No. of Shots	Total Interval		
			ft	ft			ft		
			ft	ft			Diameter		
			ft	ft			in		
Service Instructions		Treat Down	Displacement	Packer Type	Packer Depth				
Pressure Test 6000 80 bbls Mudpush @ 10.5 ppg 285 bbls Lead @ 12 ppg 885 sks 410 bbls Tail @ 13.5 ppg 1403 sks 498 bbl Displacement		Casing	498.0 bbl		ft				
		Tubing Vol.	Casing Vol.	Annular Vol.	Openhole Vol.				
		bbl	bbl	bbl	bbl				
Casing/Tubing Secured		1 Hole Vol. Circulated prior to Cement	Casing Tools			Squeeze Job			
<input checked="" type="checkbox"/>		<input checked="" type="checkbox"/>							
Lift Pressure		Shoe Type	Squeeze Type						
psi									
Pipe Rotated		Shoe Depth	Tool Type						
<input type="checkbox"/>		ft							
Pipe Reciprocated									
<input type="checkbox"/>									
No. Centralizers		Top Plugs	Bottom Plugs	Stage Tool Type		Tool Depth			
						ft			
Cement Head Type		Stage Tool Depth		Tail Pipe Size					
		ft		in					
Job Scheduled For		Arrived on Location	Leave Location	Collar Type		Tail Pipe Depth			
Nov/14/2021		Nov/14/2021	Nov/14/2021			ft			
		Collar Depth	Sqz. Total Vol.						
		ft	bbl						
Date	Time 24-hr clock	Treating Pressure PSI	Flow Rate B/M	Density LB/G	Volume BBL	Message			
11/14/2021	20:30:14	-2	0.0	8.40	0.0	End Job			
11/14/2021	20:31:35	-2	0.0	8.39	0.0	Start Job			
11/14/2021	20:32:55	1	0.3	8.35	0.0	Start Pumping Water			
11/14/2021	20:35:14	437	2.3	8.41	4.8				
11/14/2021	20:35:24	278	0.1	8.41	5.1	End Water			
11/14/2021	20:39:21	6543	0.0	8.41	5.1	Pressure Test Lines			
11/14/2021	20:40:14	6495	0.0	8.41	5.1				
11/14/2021	20:45:14	202	0.0	8.41	5.1				
11/14/2021	20:45:41	204	0.0	8.41	5.1	Start Pumping Spacer			
11/14/2021	20:50:14	519	2.2	10.40	15.0				
11/14/2021	20:55:14	897	6.4	10.63	38.3				
11/14/2021	21:00:14	610	5.3	10.45	70.2				
11/14/2021	21:03:00	95	0.0	10.59	82.4	End Spacer			
11/14/2021	21:05:14	11	0.0	10.57	82.4				
11/14/2021	21:05:47	11	0.0	10.57	82.4	Drop Bottom Plug			
11/14/2021	21:08:31	58	0.6	10.53	82.4	Start Mixing Lead Slurry			
11/14/2021	21:10:14	667	4.4	11.76	87.8				
11/14/2021	21:15:14	1082	6.3	11.95	117.1				
11/14/2021	21:20:14	994	6.4	11.92	148.8				
11/14/2021	21:25:14	516	5.1	11.93	175.9				
11/14/2021	21:30:14	792	6.4	11.92	204.7				

Well			Field		Job Start	Customer		Job Number
SBJ 13-3HZ			Wattenburg		Nov/14/2021	OXY		EAJ7-02705
Date	Time 24-hr clock	Treating Pressure PSI	Flow Rate B/M	Density LB/G	Volume BBL	Message		
11/14/2021	21:40:14	325	4.5	11.74	254.2			
11/14/2021	21:45:14	635	6.4	11.90	284.7			
11/14/2021	21:50:14	687	6.4	11.91	316.6			
11/14/2021	21:55:14	715	6.4	11.89	348.4			
11/14/2021	22:00:14	6	0.1	13.13	377.7			
11/14/2021	22:05:14	244	4.1	11.61	385.0			
11/14/2021	22:05:37	-2	0.0	11.71	386.3	End Lead Slurry		
11/14/2021	22:09:38	1	0.5	11.61	386.4	Start Mixing Tail Slurry		
11/14/2021	22:10:14	314	4.1	13.25	388.4			
11/14/2021	22:15:14	449	5.4	13.42	412.5			
11/14/2021	22:20:14	391	5.5	13.50	440.1			
11/14/2021	22:25:14	402	5.5	13.64	467.5			
11/14/2021	22:30:14	254	4.2	13.38	494.0			
11/14/2021	22:35:14	398	5.5	13.52	519.8			
11/14/2021	22:40:14	395	5.5	13.50	547.2			
11/14/2021	22:45:14	407	5.5	13.51	574.7			
11/14/2021	22:50:14	66	2.3	10.59	599.4			
11/14/2021	22:55:14	413	5.5	13.51	620.7			
11/14/2021	23:05:14	412	5.5	13.42	674.5			
11/14/2021	23:10:14	398	5.5	13.45	701.8			
11/14/2021	23:15:14	420	5.5	13.46	729.2			
11/14/2021	23:20:14	395	5.5	13.43	756.5			
11/14/2021	23:25:14	270	4.2	13.34	782.8			
11/14/2021	23:30:14	110	2.3	13.55	795.7			
11/14/2021	23:31:46	7	0.1	13.74	799.2	End Tail Slurry		
11/14/2021	23:35:14	8	0.0	13.40	799.2			
11/14/2021	23:39:03	8	0.0	10.72	799.4	Wash Pumps Lines		
11/14/2021	23:40:14	52	0.3	8.83	799.4			
11/14/2021	23:45:14	318	5.6	9.14	812.8			
11/14/2021	23:50:14	57	2.3	8.41	829.8			
11/14/2021	23:51:30	-1	0.0	8.41	829.9	Drop Top Plug		
11/14/2021	23:52:35	31	1.5	8.40	830.0	Start Displacement		
11/14/2021	23:55:14	293	7.7	8.41	845.8			
11/15/2021	00:00:14	1376	7.8	8.40	884.1			
11/15/2021	00:05:14	1561	7.4	8.41	922.3			
11/15/2021	00:10:14	1414	5.4	8.40	957.0			
11/15/2021	00:15:14	1417	4.1	8.41	982.0			
11/15/2021	00:20:14	1663	4.1	8.40	1002.3			
11/15/2021	00:25:14	1792	4.1	8.40	1022.6			
11/15/2021	00:30:14	2098	5.4	8.40	1043.3			
11/15/2021	00:35:14	1912	4.0	8.40	1065.6			
11/15/2021	00:40:14	1998	4.1	8.40	1085.9			
11/15/2021	00:45:14	2065	4.0	8.40	1106.1			
11/15/2021	00:50:14	2136	4.0	8.40	1126.3			
11/15/2021	00:55:14	2218	4.0	8.40	1146.5			
11/15/2021	01:00:14	2293	4.0	8.40	1166.7			
11/15/2021	01:05:14	2353	4.0	8.40	1186.9			
11/15/2021	01:10:14	2402	4.0	8.40	1207.1			
11/15/2021	01:15:14	2444	4.0	8.40	1227.2			
11/15/2021	01:20:14	2478	4.0	8.40	1247.4			
11/15/2021	01:25:14	2510	4.0	8.40	1267.5			
11/15/2021	01:30:14	2546	4.0	8.40	1287.7			
11/15/2021	01:35:14	2576	4.0	8.40	1307.8			
11/15/2021	01:39:57	3395	0.1	8.40	1326.6	End Displacement		

Well		Field		Job Start		Customer		Job Number	
SBJ 13-3HZ		Wattenburg		Nov/14/2021		OXY		EAJ7-02705	
Date	Time 24-hr clock	Treating Pressure PSI	Flow Rate B/M	Density LB/G	Volume BBL	Message			
11/15/2021	01:40:14	3386	0.0	8.40	1326.6				
11/15/2021	01:43:15	3519	0.5	8.40	1326.7	Casing Test 15 min			
11/15/2021	01:45:14	3522	0.0	8.40	1326.7				
11/15/2021	01:50:14	3597	0.0	8.40	1326.7				
11/15/2021	01:55:14	3653	0.0	8.40	1326.7				
11/15/2021	02:00:14	-5	0.0	8.40	1326.7				

Post Job Summary

Average Pump Rates, bbl/min					Volume of Fluid Injected, bbl			
Slurry	N2	Mud	Maximum Rate	Total Slurry	Mud	Spacer	N2	
4.7			8.0	0.0	0.0	0.0		
Treating Pressure Summary, psi					Breakdown Fluid			
Maximum	Final	Average	Bump Plug to	Breakdown	Type	Volume	Density	
6624	-5	1167				bbl	lb/gal	
Avg. N2 Percent	Designed Slurry Volume	Displacement	Mix Water Temp	Cement Circulated to Surface?	<input checked="" type="checkbox"/>	Volume	80.0 bbl	
%	0.0 bbl	0.0 bbl	degF	Washed Thru Perfs	<input type="checkbox"/>	To	ft	
Customer or Authorized Representative	Schlumberger Supervisor			Circulation Lost	<input type="checkbox"/>	Job Completed	<input checked="" type="checkbox"/>	
Steven	R Pippin			-		-		