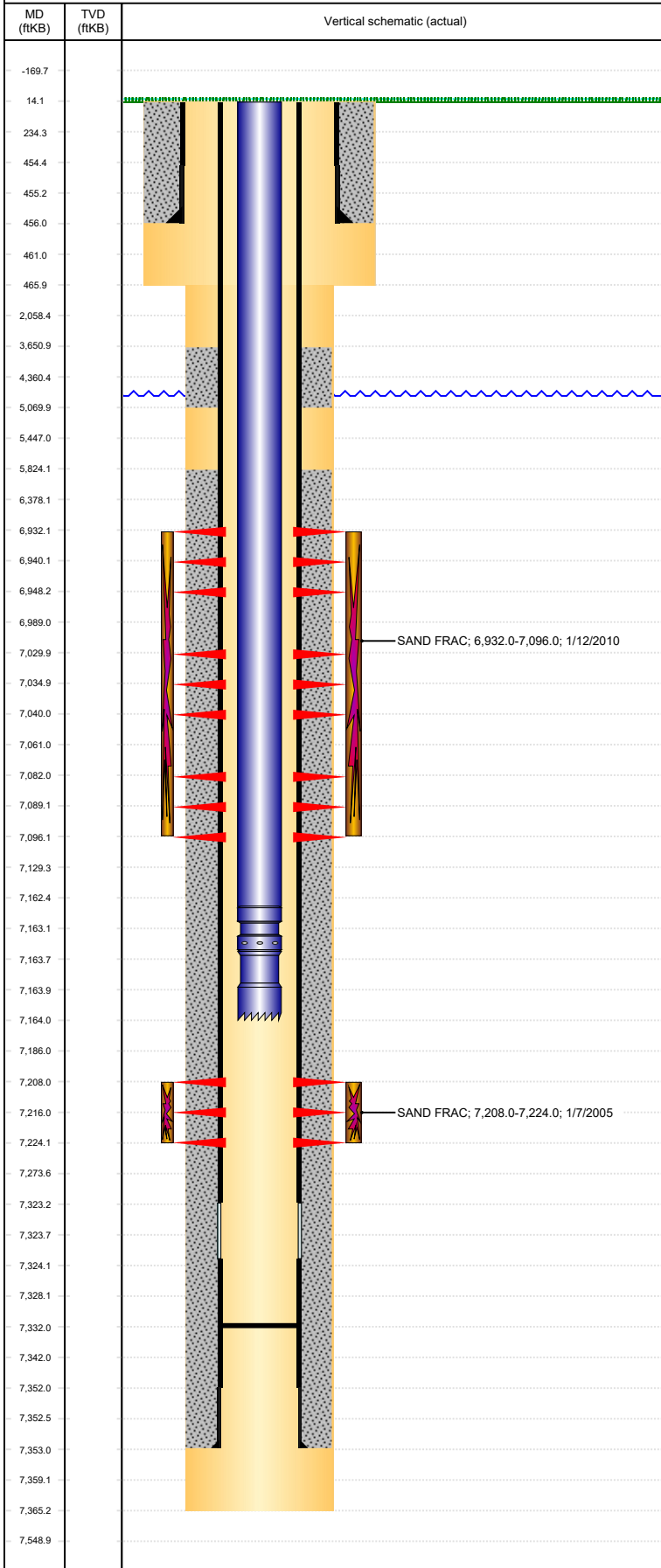


**Well Name: SHABLE 21-20**

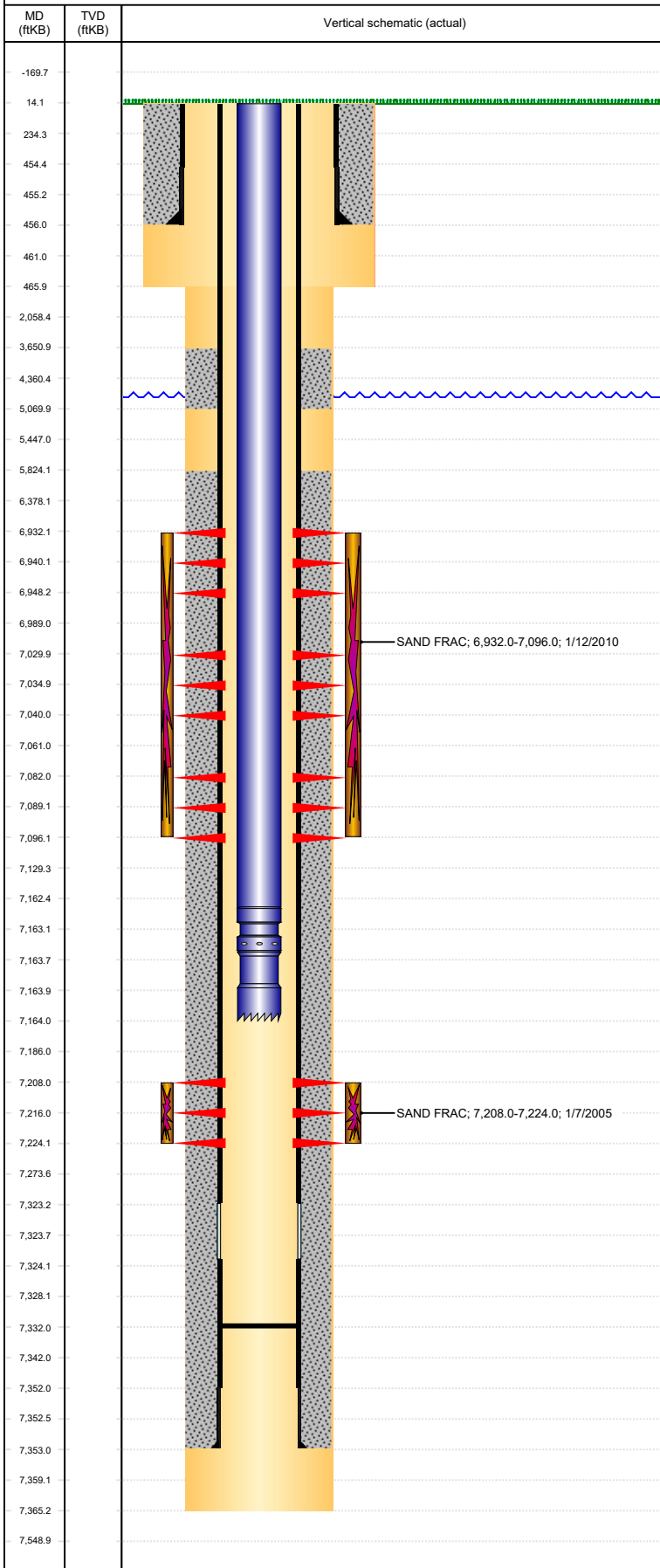
VERTICAL, ORIGINAL HOLE, 3/22/2022 10:06:46 AM



Well Header						
API 05-123-22446	Business Unit DJ BASIN	District 15	Well Config VERTICAL			
Original KB Elevation (ft) 4,794	KB - GL / MSL (ftKB) 14.00	Spud Date 12/16/2004	P & A Date			
Comment						
Directions To Well 41&44 WEST .5 SOUTH .3 GO SROUND BATTERY ON EAST SIDE THEN BACK NORTH-NORTHWEST .1 INTO						
Congressional Location						
Quarter 3 NE	Quarter 4 NW	Section 20	Township 4	Twncshp N/S Dir N	Range 65	Range E/W Dir W
Bottom Hole Legal Location						
Bottom Hole Legal Location						
Plug Back Total Depths						
Date	Depth (ftKB)	Method	Com			
12/28/2004	7,323.0	CASING TALLY	TOP OF FLOAT COLLAR			
1/3/2005	7,332.0	CASED HOLE LOG	DEPTH LOGGER ON CBL			
Wellbore Sections						
Section Des		Size (in)	Act Top, MD (ftKB)	Act Btm, MD (ftKB)		
SURFACE		12 1/4	14	466		
PRODUCTION		7 7/8	466	7,365		
Zone Statuses						
Zone Name	Status Date	Status	Fluid Type	Job	Prod Method	
NIOBRARA	1/19/2010	PR		RECOMPLETI...	Flowing	
CODELL	2/1/2005	PR		DRILLING/CO...	Flowing	
Casing Strings						
Surface, 456.0ftKB						
Casing Description Surface	Run Date 12/16/2004	OD (in) 8 5/8	Wt/Len (l... 24.00	Grade J-55	Top, MD (ft... 14.0	MD (ftKB) 456.0
Production, 7,353.0ftKB						
Casing Description Production	Run Date 12/28/2004	OD (in) 4 1/2	Wt/Len (l... 11.60	Grade I-80	Top, MD (ft... 14.0	MD (ftKB) 7,353.0
Cement						
Description SURFACE CASING CEMENT				Top Depth (ftKB) 14.0	Bottom Depth (ftKB) 456.0	
Description PRDUCTION CASING CEMENT				Top Depth (ftKB) 3,651.0	Bottom Depth (ftKB) 5,070.0	
Description PRODUCTION CASING CEMENT				Top Depth (ftKB) 5,824.0	Bottom Depth (ftKB) 7,353.0	
Tubing Strings						
Tubing Description PRODUCTION TUBING	Run Date 1/12/2005	String... 2 3/8	ID (in)	Wt (lb/ft)	Grade	Len (ft) 7,175.00
Tubing Components						
Item Des	OD (in)	Wt (lb/ft)	Grade	Jts	Len (ft)	Btm (ftKB)
TUBING, ,	2 3/8			233	7,173.00	7,187.0
SEATING NIPPLE,	2 3/8			1	1.00	7,188.0
NOTCHED COLLAR, ,	2 3/8			1	1.00	7,189.0
Tubing Description BRIDGE PLUG	Run Date 12/31/2009	String...	ID (in)	Wt (lb/ft)	Grade	Len (ft) 1.00
Tubing Components						
Item Des	OD (in)	Wt (lb/ft)	Grade	Jts	Len (ft)	Btm (ftKB)
RBP					1.00	7,151.0
Tubing Description PRODUCTION TUBING	Run Date 3/2/2010	String... 2 3/8	ID (in) 2.00	Wt (lb/ft) 4.70	Grade J-55	Len (ft) 7,150.10
Tubing Components						
Item Des	OD (in)	Wt (lb/ft)	Grade	Jts	Len (ft)	Btm (ftKB)
Tubing	2 3/8	4.70	J-55	232	7,148.60	7,162.6
Pump Seating Nipple	2 3/8			1	1.00	7,163.6
Notched collar	2 3/8			1	0.50	7,164.1

**Well Name: SHABLE 21-20**

VERTICAL, ORIGINAL HOLE, 3/22/2022 10:06:46 AM



Other In Hole						
Run Date	Des	Make	OD (in)	Top (ftKB)	Btm (ftKB)	Prop R un 9

Logs			
Date	Type	Top, MD (ftKB)	Btm, MD (ftKB)
12/28/2004	COMPENSATED NEUTRON	457.0	7,364.0
12/28/2004	INDUCTION	457.0	7,364.0
1/3/2005	CEMENT BOND	5,100.0	7,332.0

Perforation Data					
Linked Zone	Bnch/St g	Sum of Entered Shot Total	Top (ftKB)	Btm (ftKB)	Date
NIOBRARA, ORIGINAL HOLE	A	32	6,932.01	6,948.01	12/31/2009
NIOBRARA, ORIGINAL HOLE	B	20	7,030.01	7,040.01	12/31/2009
NIOBRARA, ORIGINAL HOLE	C	28	7,082.01	7,096.01	12/31/2009
CODELL, ORIGINAL HOLE		64	7,208.00	7,224.00	1/6/2005
<b>Total</b>		<b>144</b>			

Stimulation Intervals			
Interval...	Start Date	Primary Job Type	Zone
1	1/7/2005	DRILLING/COMPLETION - ORIGINAL	CODELL, ORIGINAL HOLE
Technical Result		Tech Result Details	Tech Result Note

Stimulation Intervals			
Interval...	Start Date	Primary Job Type	Zone
1	1/12/2010	RECOMPLETION	NIOBRARA, ORIGINAL HOLE
Technical Result		Tech Result Details	Tech Result Note

Comment  
NIOBRARA RECOMPLETE