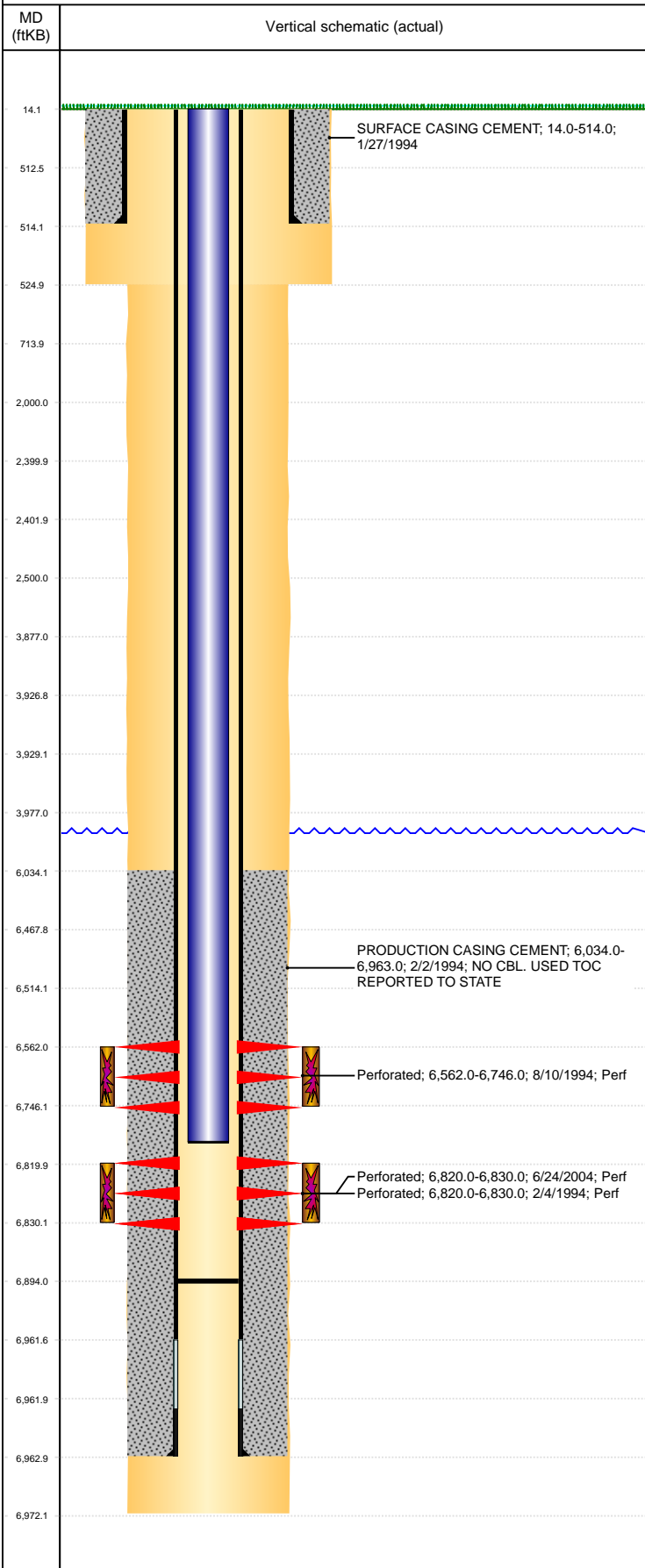


Well Name: STATE 36-1414

VERTICAL, ORIGINAL HOLE, 3/22/2022 9:49:04 AM



Well Header									
API 05-123-17803		Business Unit DJ BASIN		District 15		Well Config VERTICAL			
KB - GL / MSL (ft... 14.00		Spud Date 1/27/1994		P & A Date		Well Production Status PR			SoRT No
Comment NO CBL ON FILE, USED TOC 6034' REPORTED TO STATE. INCORRECT SPUD DATE REPORTED TO STATE. STATE SHOWS SHUT IN MAY 2017. 8/27/07- TAG W/ 209 JTS @ 6894, LEAVES 64' OF RAT HOLE.									
Surface Location (Congressional)									
Qtr 3 SE	Qtr 4 SW	Section 36	Twnshp 4	Twnsh... N	Range 64	Rng E/... W	Actual Latitude (°) 40.26302693	Actual Longitude (°) -104.50171738	
Wellbore Sections									
Section Des		Size (in)		Act Top, MD (ftKB)		Act Btm, MD (ftKB)			
SURFACE		12 1/4		14		525			
PRODUCTION		7 7/8		525		6,972			
Casing Strings									
Csg Des		Run Date	OD (in)	Wt/Len (lb/ft)	Grade	Top, MD (ftKB)	MD (ftKB)		
Surface		1/27/1994	8 5/8	24.00	J-55	14.0	514.0		
Production		2/1/1994	3 1/2	7.70	B-70	14.0	6,963.0		
Cement									
Des			Start Date		Top (ftKB)		Btm (ftKB)		
SURFACE CASING CEMENT			1/27/1994		14.0		514.0		
PRODUCTION CASING CEMENT			2/2/1994		6,034.0		6,963.0		
Zone Statuses									
Zone Name	Status Date	Status	Fluid Type	Job			Prod Method		
CODELL	7/3/2004	PR		RE-FRAC, 6/22/2004 00:00			Flowing		
CODELL	7/10/2009	PR					Flowing		
NIOBRARA	7/10/2009	PR					Flowing		
NIOBRARA	9/6/2017	PR							
Perforation Data									
Linked Zone		Bnch/Stg	Entered Shot Total	Top (ftKB)		Btm (ftKB)		Date	
NIOBRARA, ORIGINAL HOLE			48	6,562.00		6,746.00		8/10/1994	
CODELL, ORIGINAL HOLE			20	6,820.00		6,830.00		2/4/1994	
CODELL, ORIGINAL HOLE			40	6,820.00		6,830.00		6/24/2004	
Stimulation Intervals									
Zone			Start Date		Top (ftKB)		Btm (ftKB)		
NIOBRARA, ORIGINAL HOLE			9/20/1994		6,562.0		6,746.0		
CODELL, ORIGINAL HOLE			2/8/1994		6,820.0		6,830.0		
CODELL, ORIGINAL HOLE			7/2/2004		6,820.0		6,830.0		
Other In Hole									
Run Date	Des			Make		OD (in)	Top (ftKB)	Btm (ftKB)	
Logs									
Date		Type				Top, MD (ftKB)		Btm, MD (ftKB)	
2/1/1994		INDUCTION				514.0		6,970.0	
2/4/1994		GAMMA RAY				6,400.0		6,910.0	
Plug Back Total Depths									
Date		Type		Com				Depth (ftKB)	
2/2/1994		FLOAT COLLAR		TOP OF FLOAT COLLAR				6,940.0	
8/27/2007		FILL		TAG W/ 209 JTS @ 6894, LEAVES 64' RAT HOLE				6,894.0	