

| | | | | | | |
|--|-------|---|---|------|-------|--------|
| WVFCAL | 16.00 | | | | | |
| WVFS8 | 13.58 | | | | | |
| WVFS7 | 13.58 | | | | | |
| WVFS6 | 13.58 | | SCBLTEKSECT-275 No Temp (111) TekCo 2 3/4" 400 Deg F Sector Tool with No Temperature | 9.13 | 2.75 | 102.00 |
| WVFS5 | 13.58 | | | | | |
| WVFS4 | 13.58 | | | | | |
| WVFS3 | 13.58 | | | | | |
| WVFS2 | 13.58 | | | | | |
| WVFS1 | 13.58 | | | | | |
| WV3FT | 12.83 | | | | | |
| WV5FT | 11.83 | | | | | |
| WVFSYNC | 8.50 | | | | | |
| CCL | 7.35 | CCL-275tekco (111) Tekco 2 3/4" 450 Deg. F Rare Earth Magnets | 1.83 | 2.75 | 33.00 | |
| GR | 4.04 | GR-Tek-Co 2 3/4 (0111) Tekco 2 3/4" 400 Deg. F Logging Gamma Ray | 3.67 | 2.75 | 40.00 | |
| | | Centralizers-8071-275-200 Tekco 2 3/4" Adjustable Centralizer | 2.73 | 2.75 | 25.00 | |
| | | Bull_Plug-1_7/16_GO Titan 1 7/16" Female Bull Plug | 0.27 | 1.44 | 1.00 | |
| Dataset: oxy_hsr-brown_14-1a_0512315143_01102022_scbl.db: field/well/run1/pass22 Total length: 18.64 ft Total weight: 204.31 lb O.D.: 2.75 in | | | | | | |



MAIN PASS

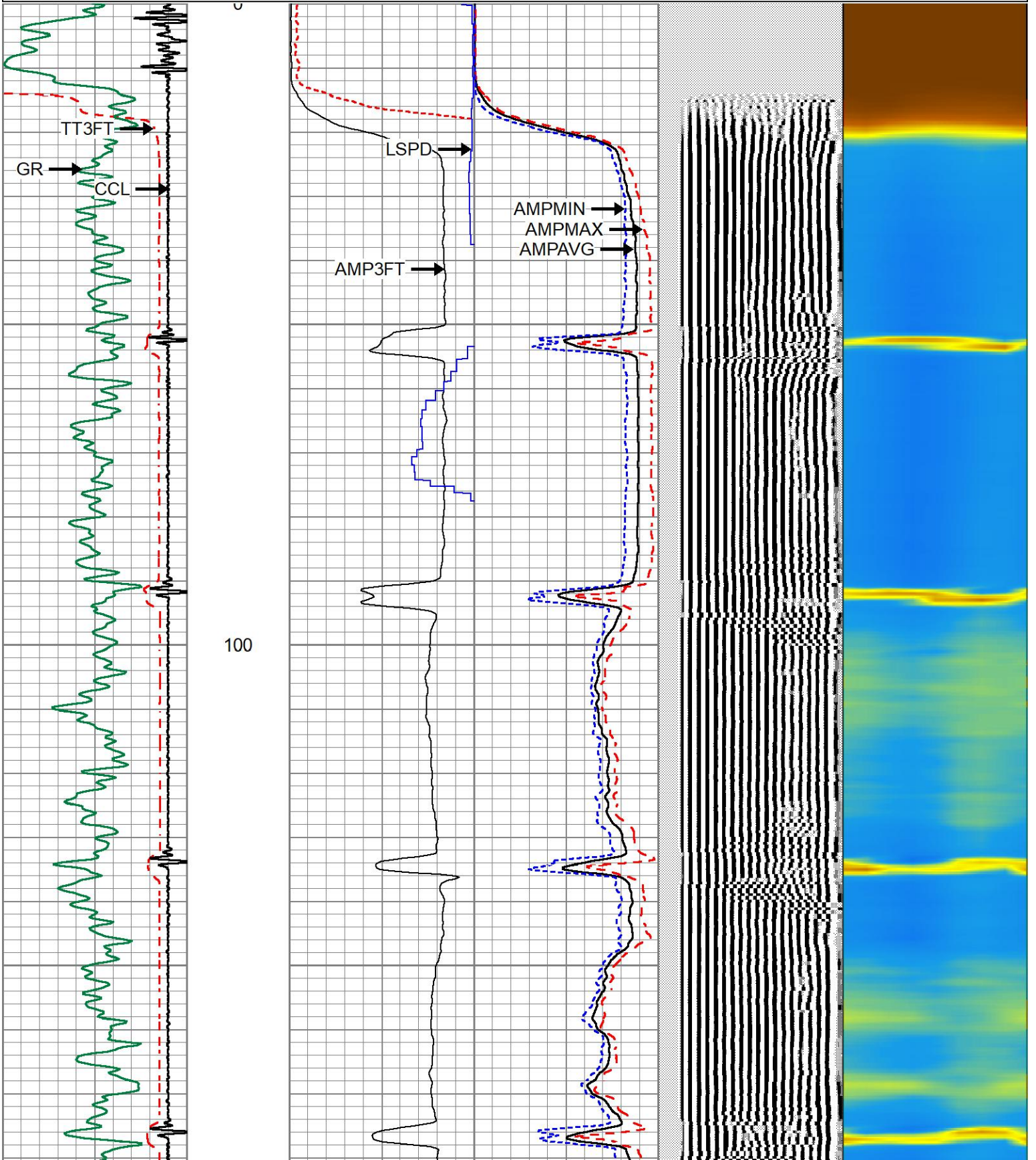
2ND TOOL

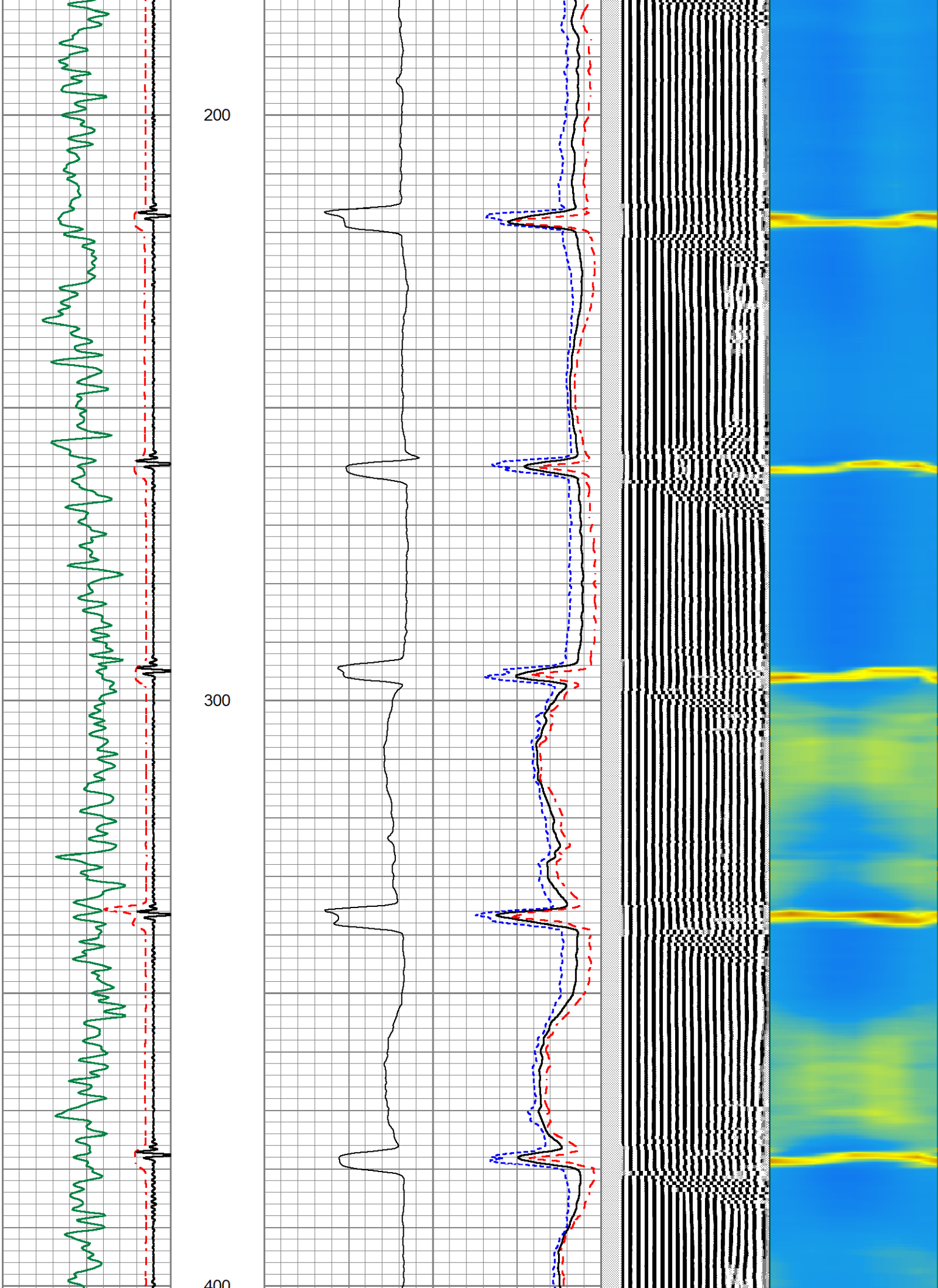
Database File oxy_hsr-brown_14-1a_0512315143_01102022_scbl.db
 Dataset Pathname pass26
 Presentation Format 1patriotradii
 Dataset Creation Mon Jan 10 13:26:32 2022
 Charted by Depth in Feet scaled 1:240

293 TT (usec) 193
 0 GR (GAPI) 150
 9 CCL -1

0 AMP (mV) 100
 0 3FT X 5 (mV) 20
 0 LSPD (ft/min)-100
 0 AMPAVG 100
 0 AMPMAX 100
 0 AMPMIN 100

200 VDL (usec) 1200 1 RADIAL MAP 8

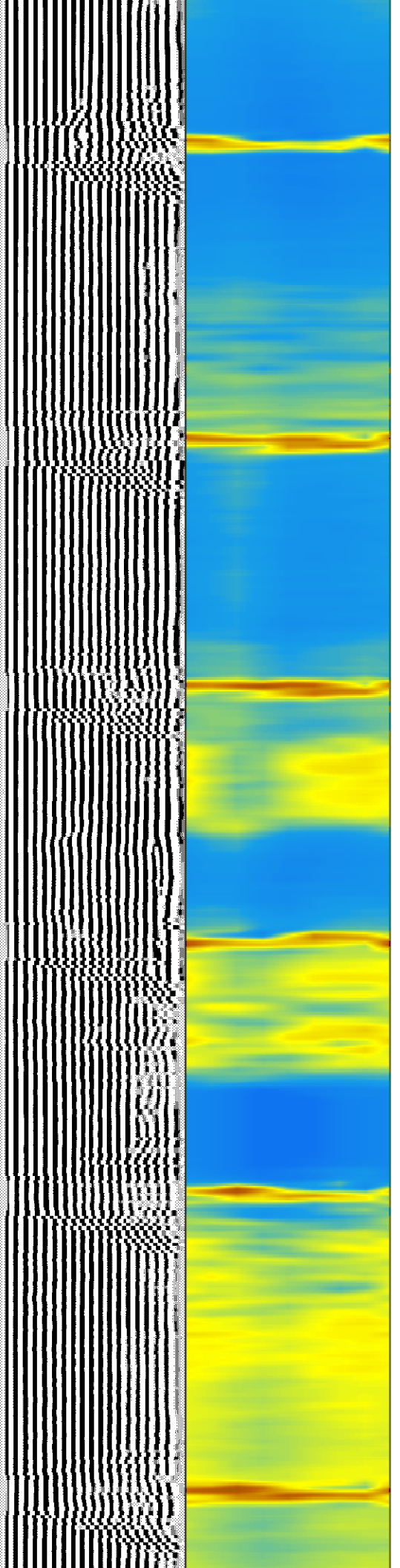
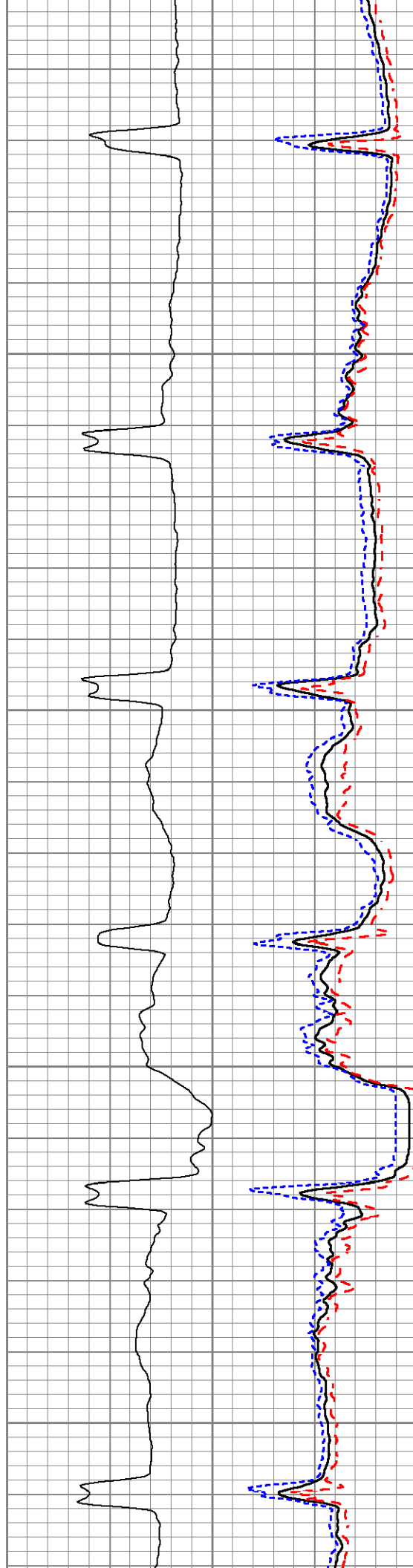
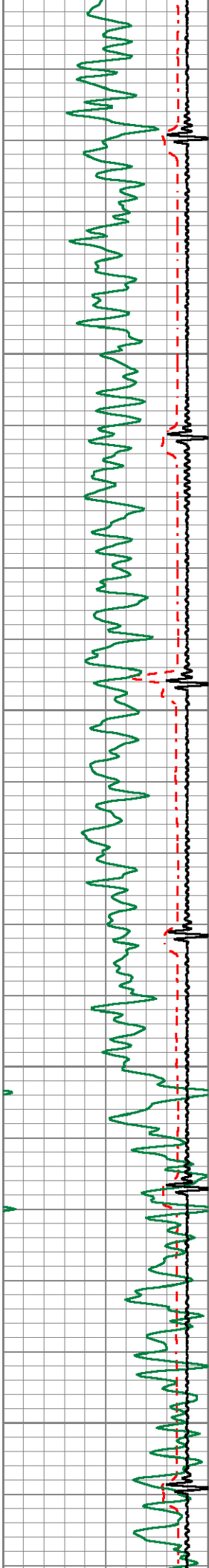


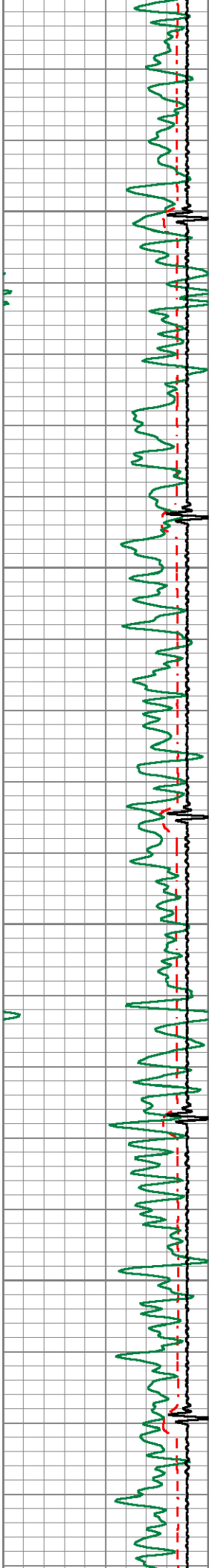


400

500

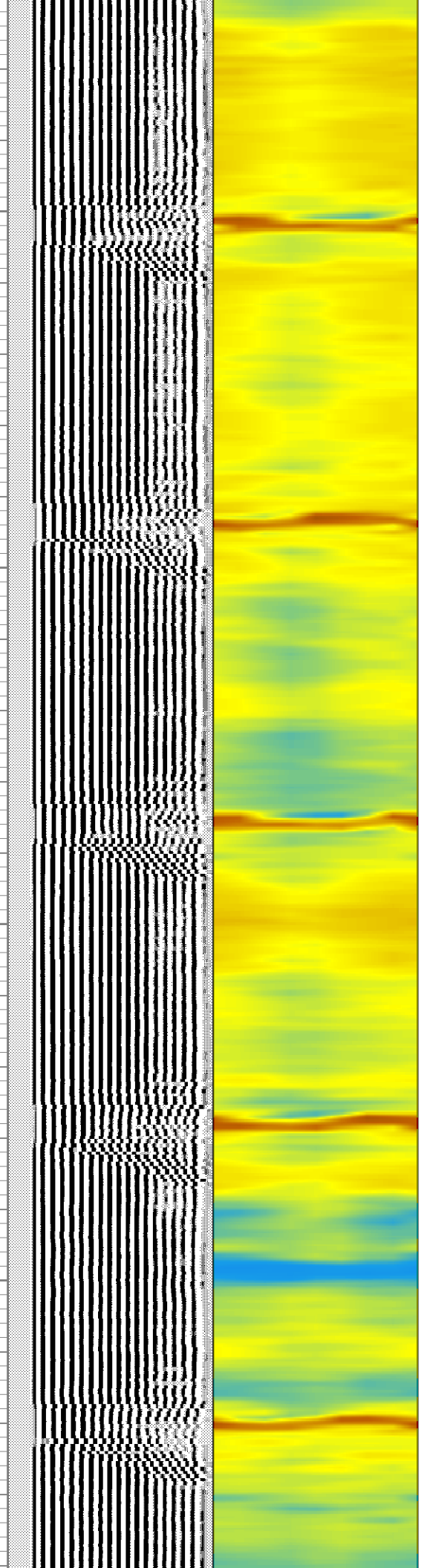
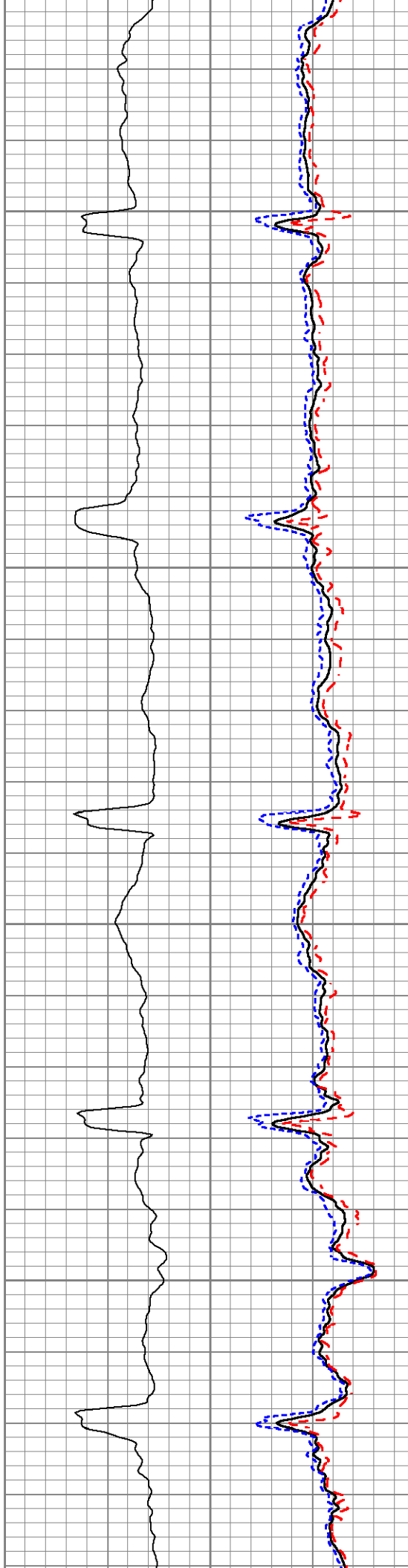
600

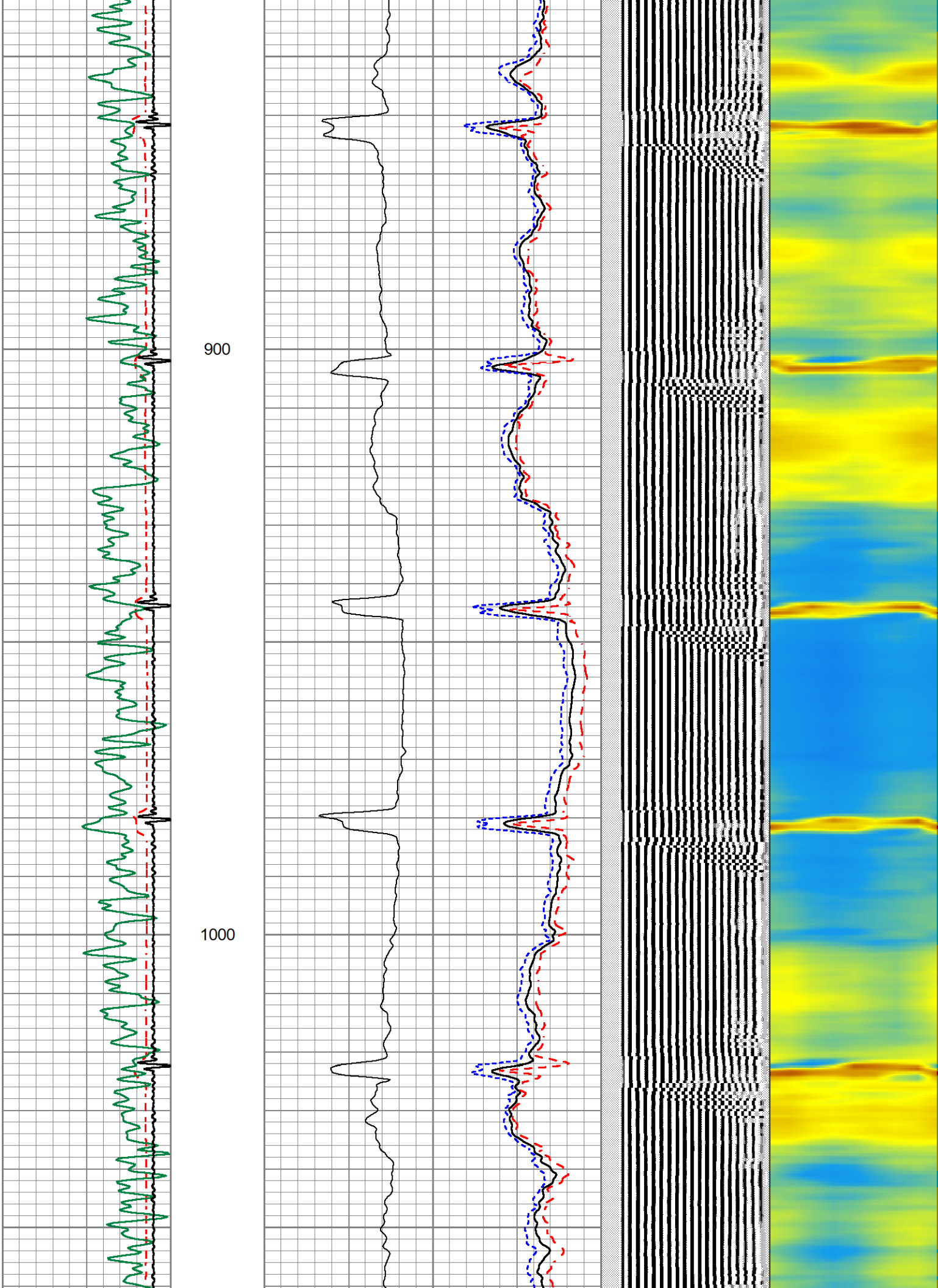


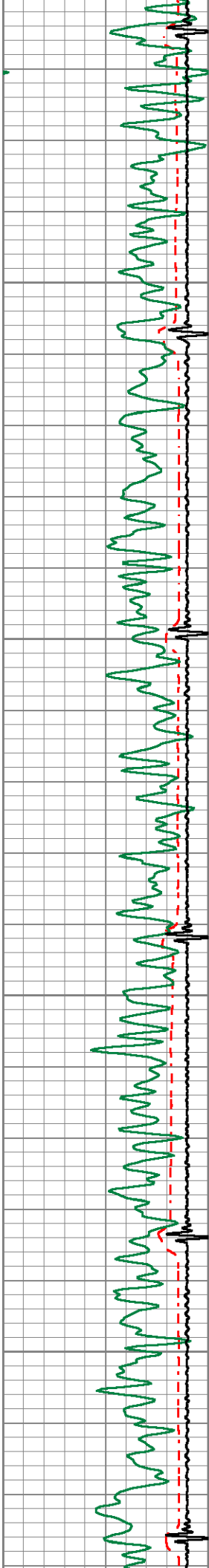


700

800

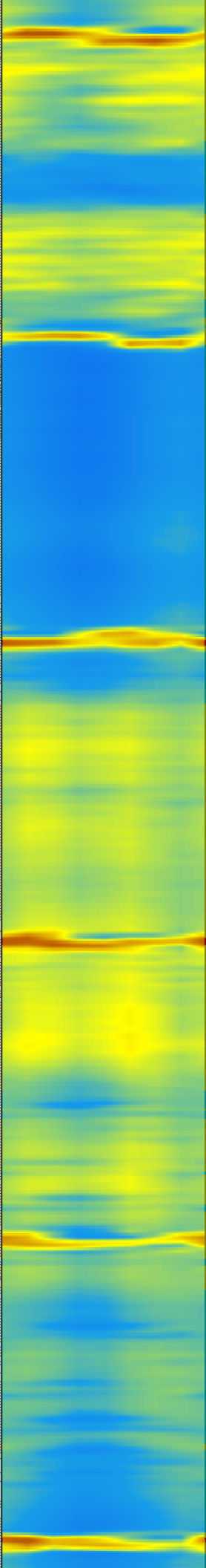
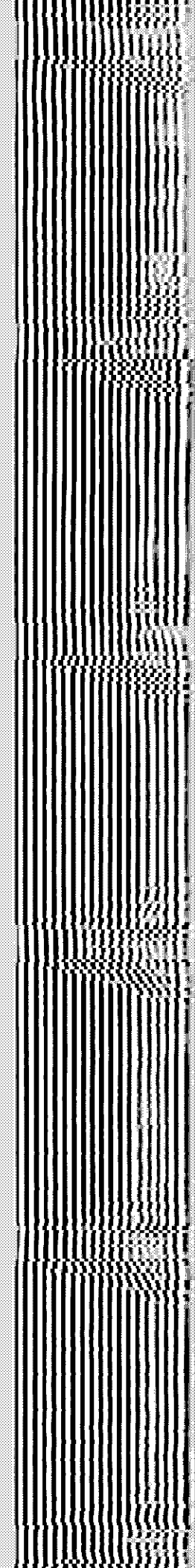
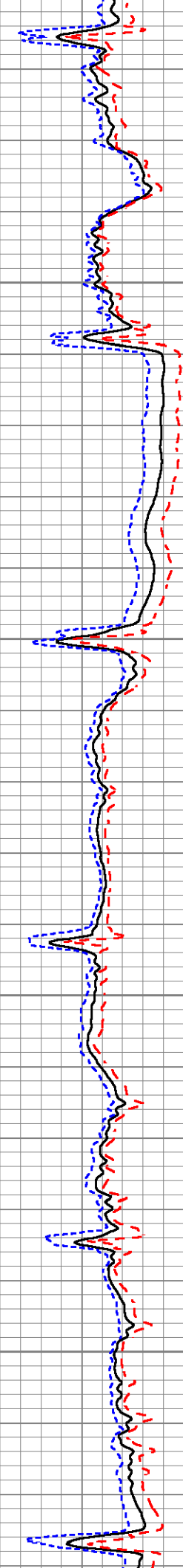
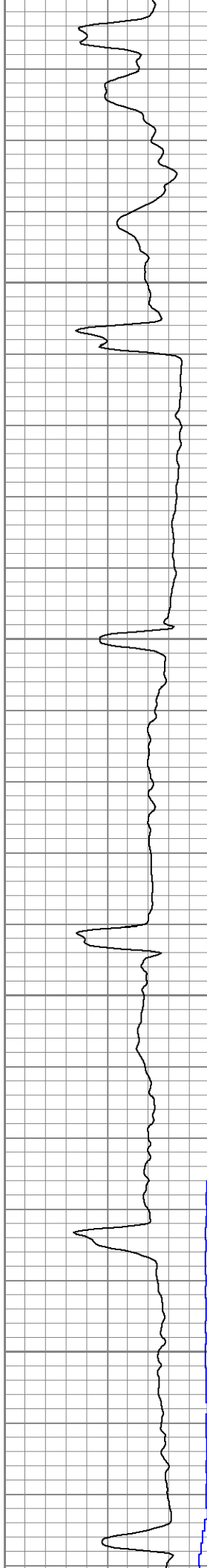


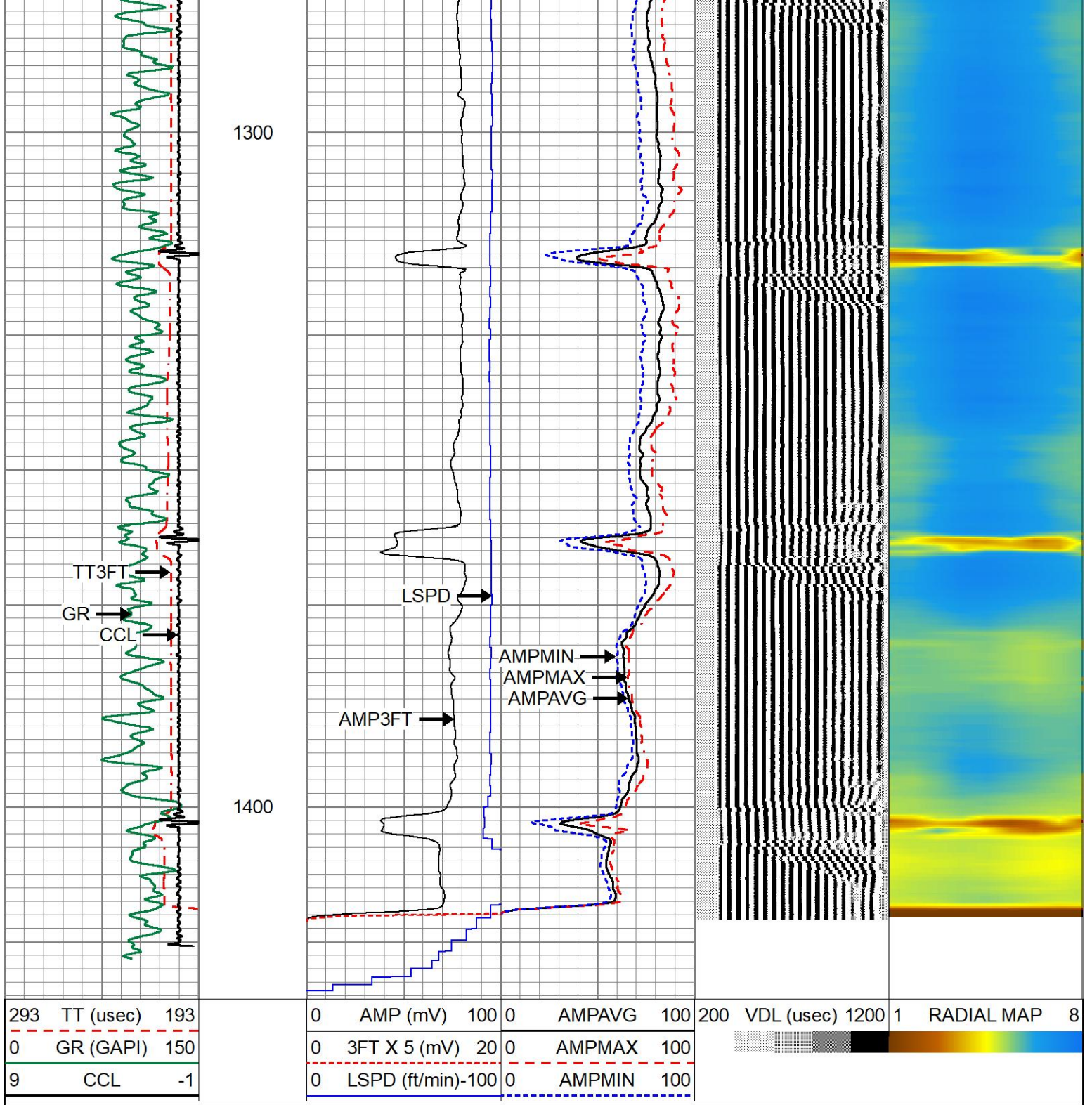




1100

1200

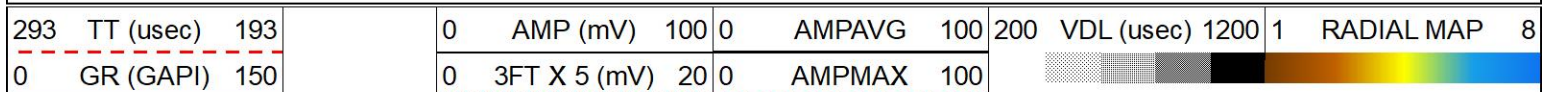


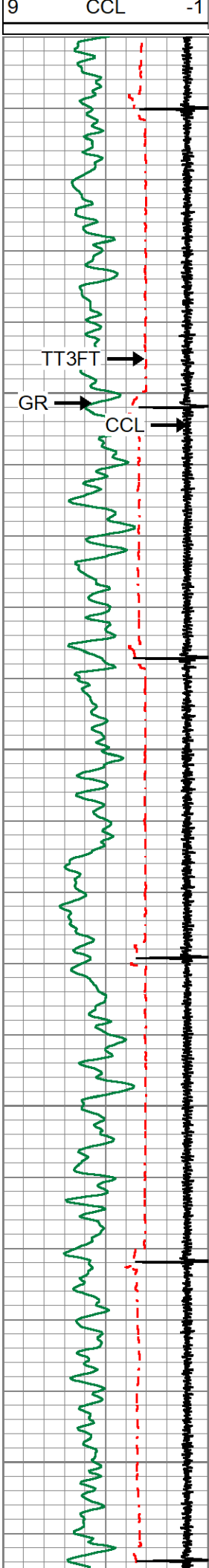


MAIN PASS

FIRST TOOL

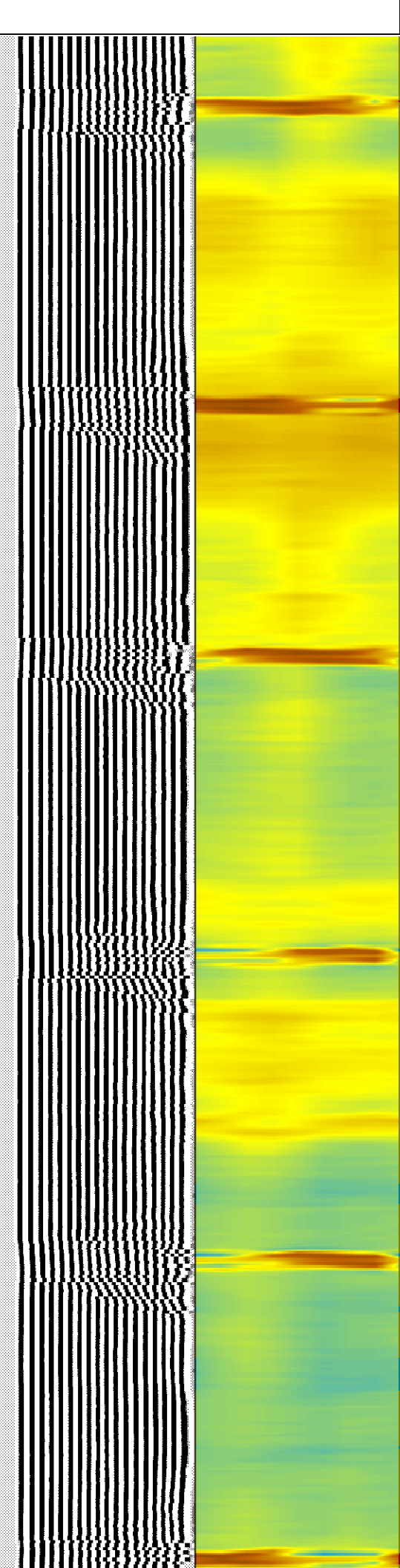
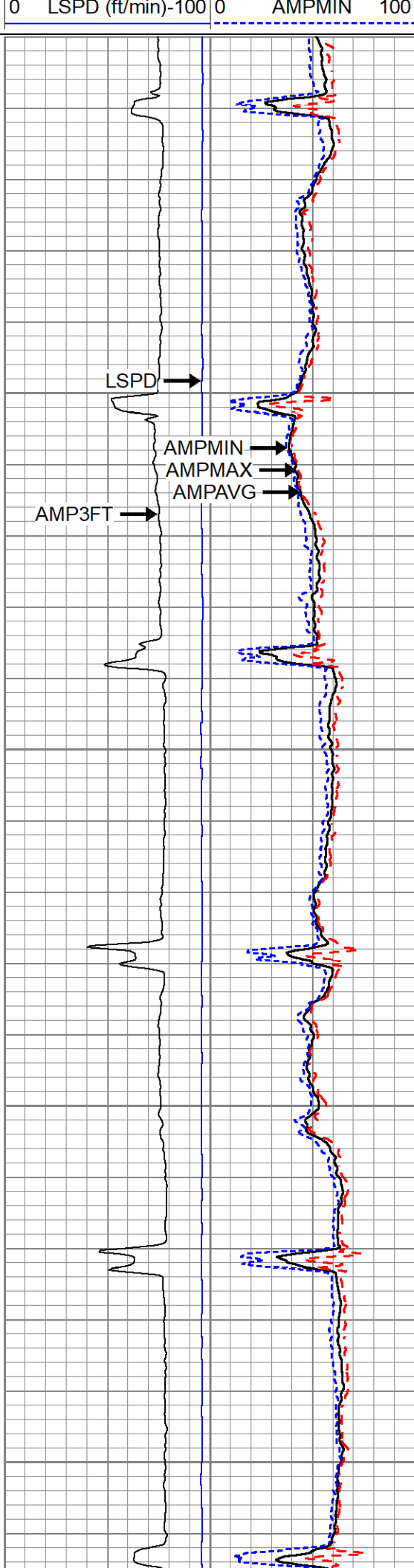
Database File oxy_hsr-brown_14-1a_0512315143_01102022_scbl.db
 Dataset Pathname pass22
 Presentation Format 1patriotradii
 Dataset Creation Mon Jan 10 12:29:55 2022
 Charted by Depth in Feet scaled 1:240





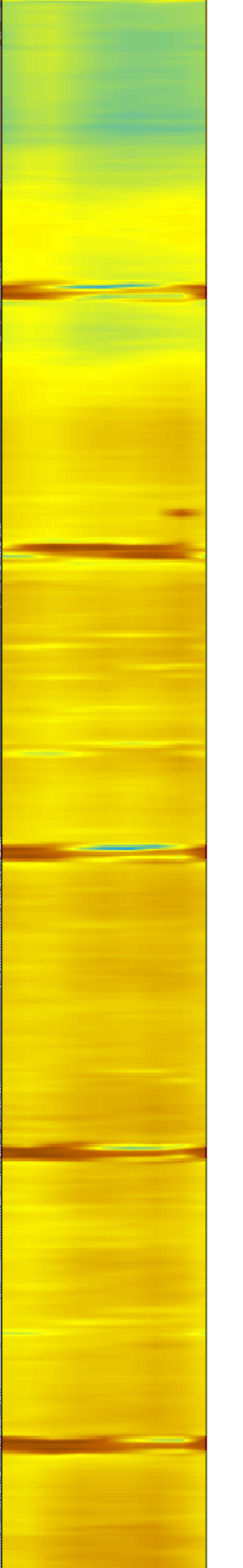
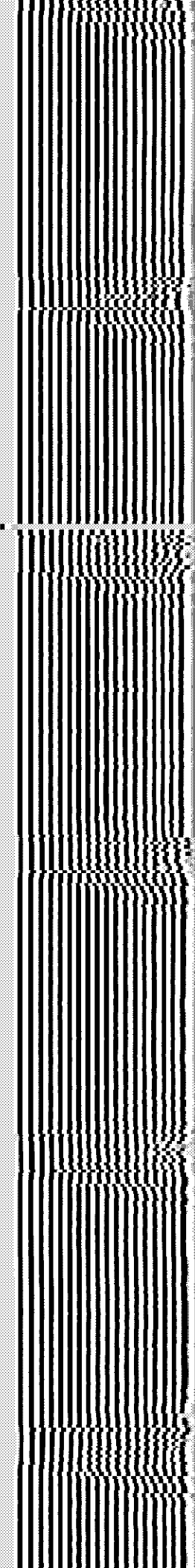
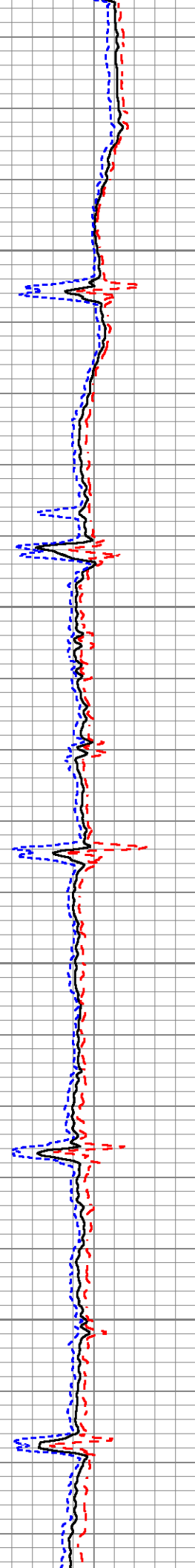
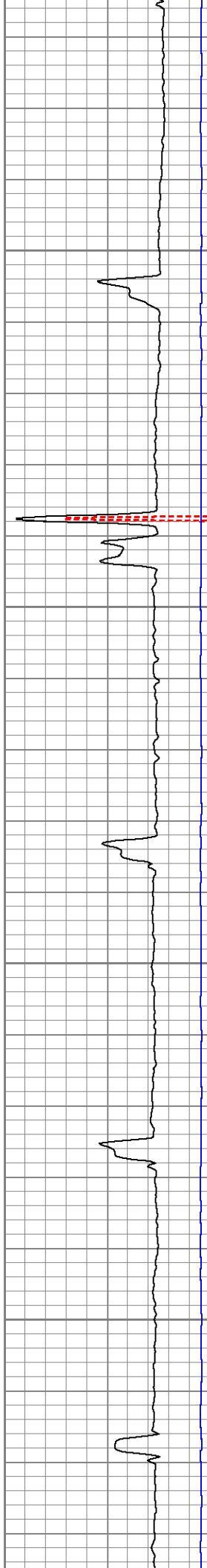
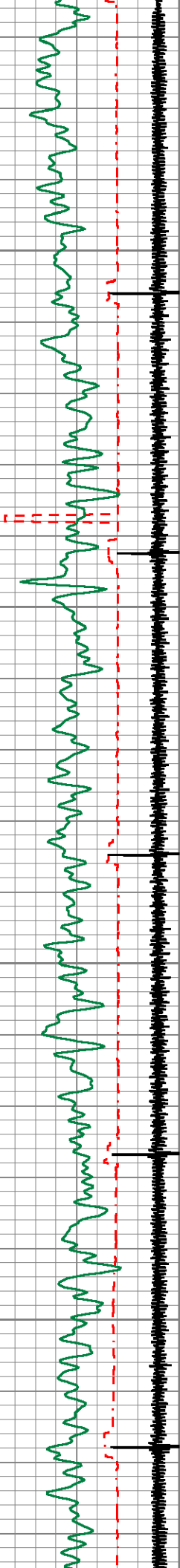
1400

1500



1600

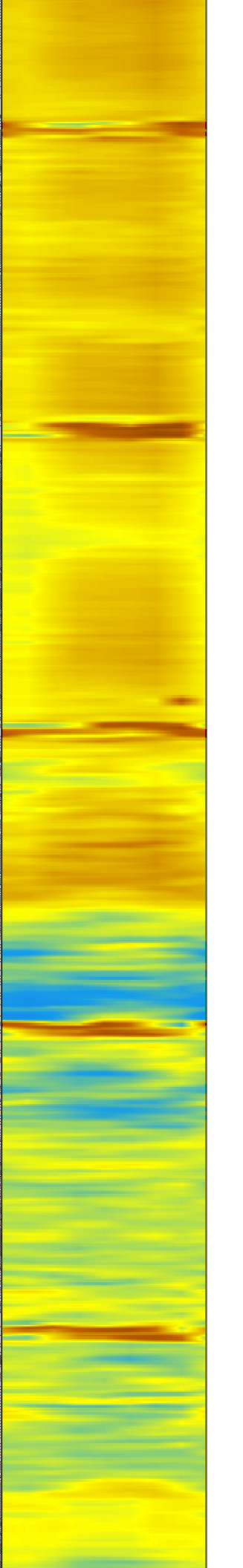
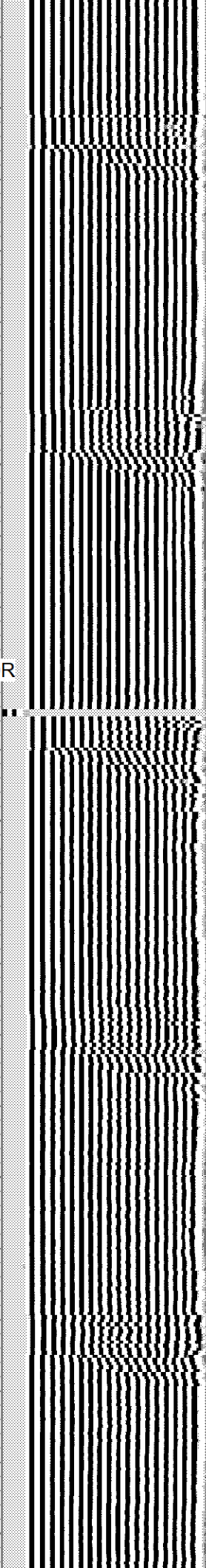
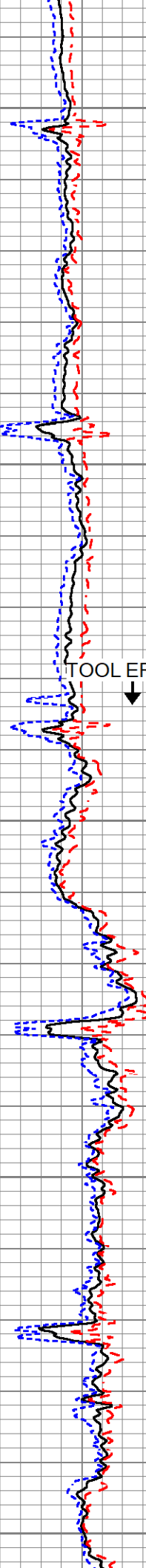
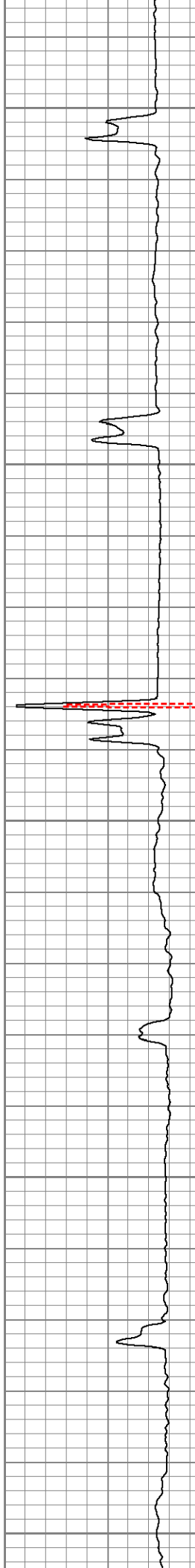
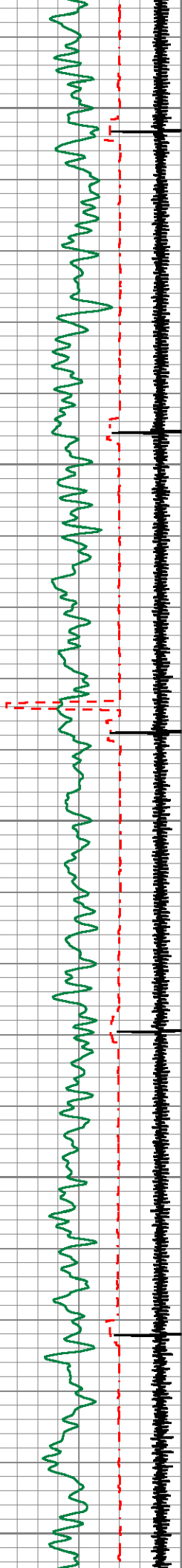
1700

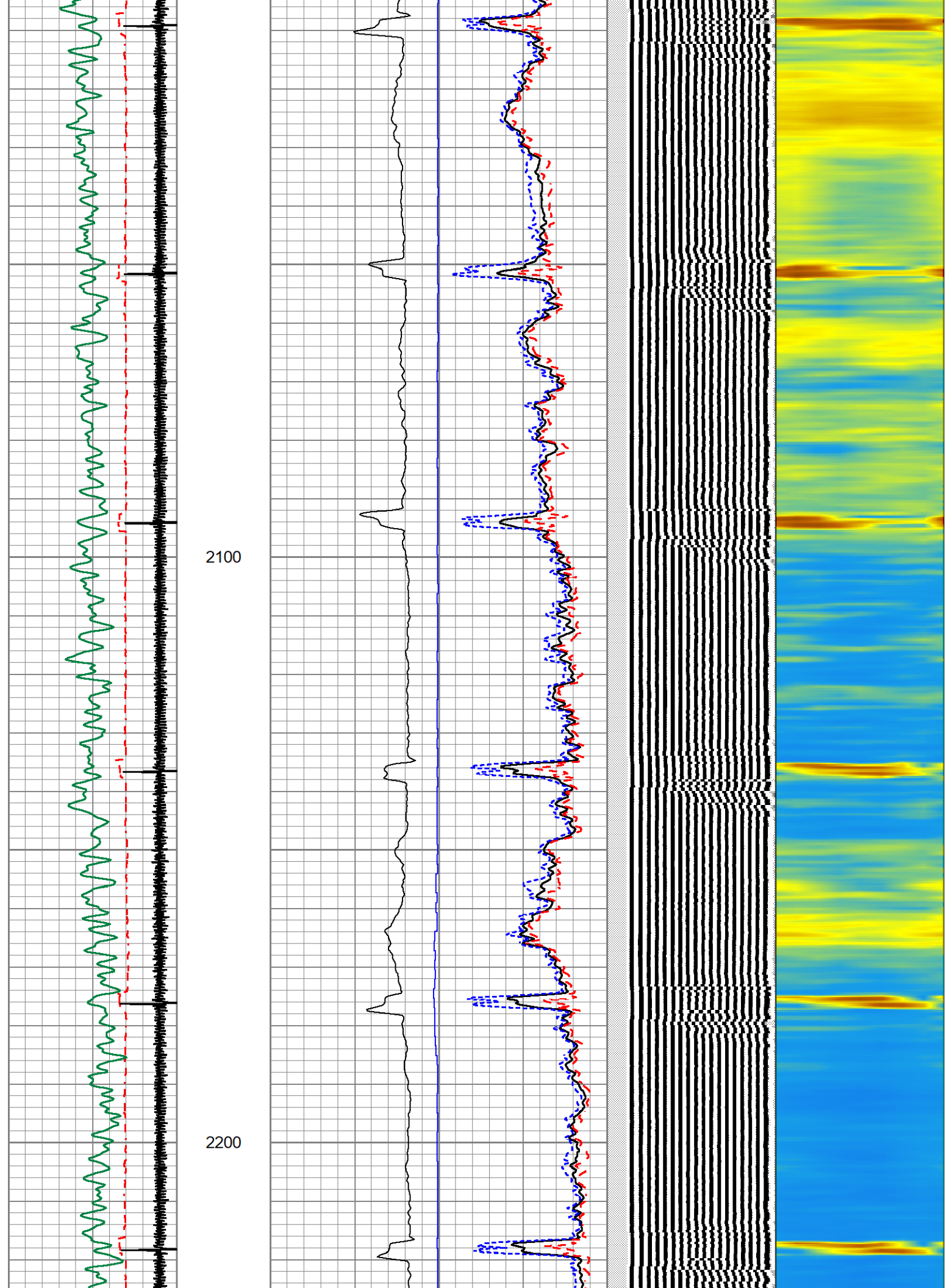


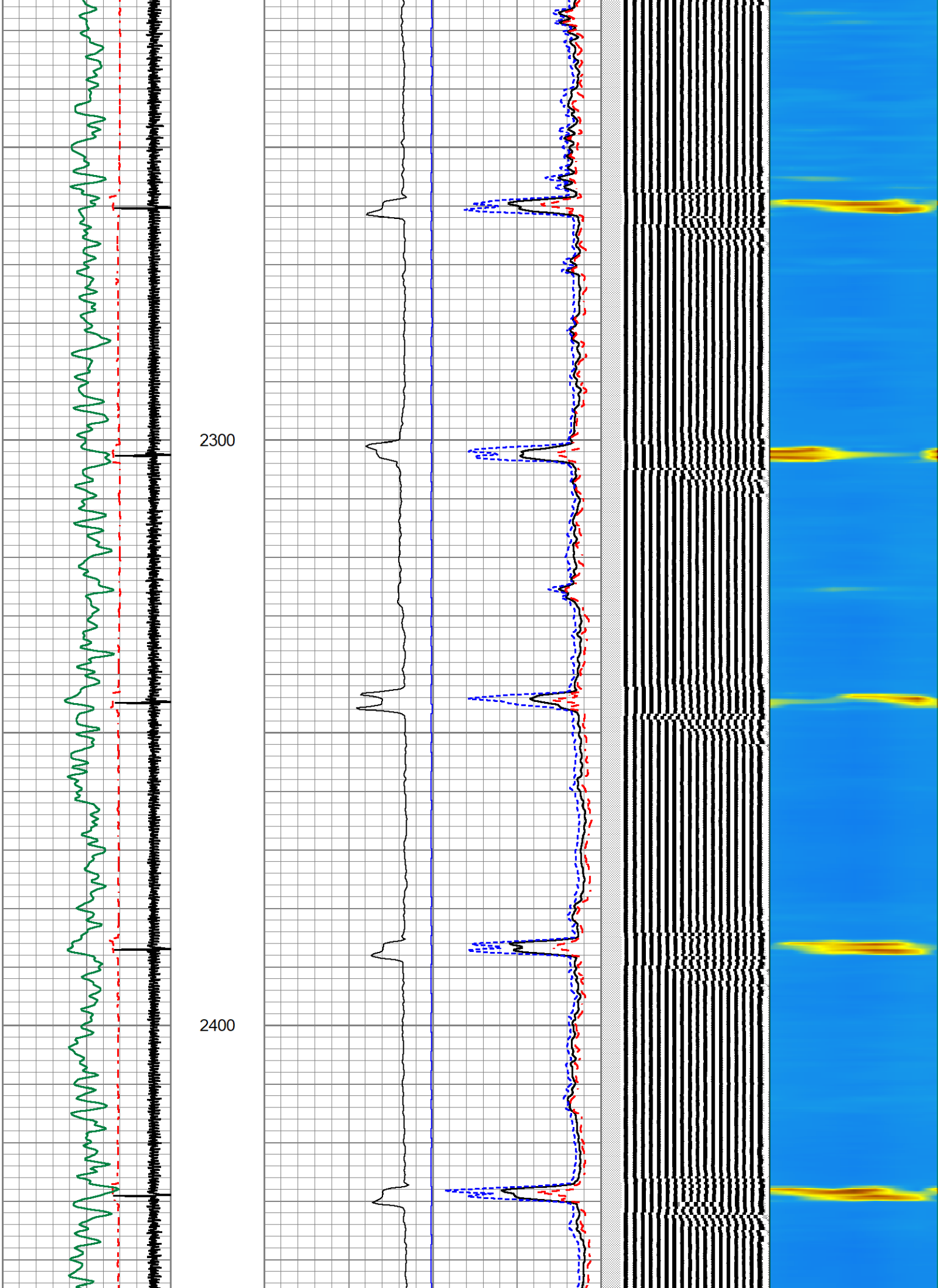
1800

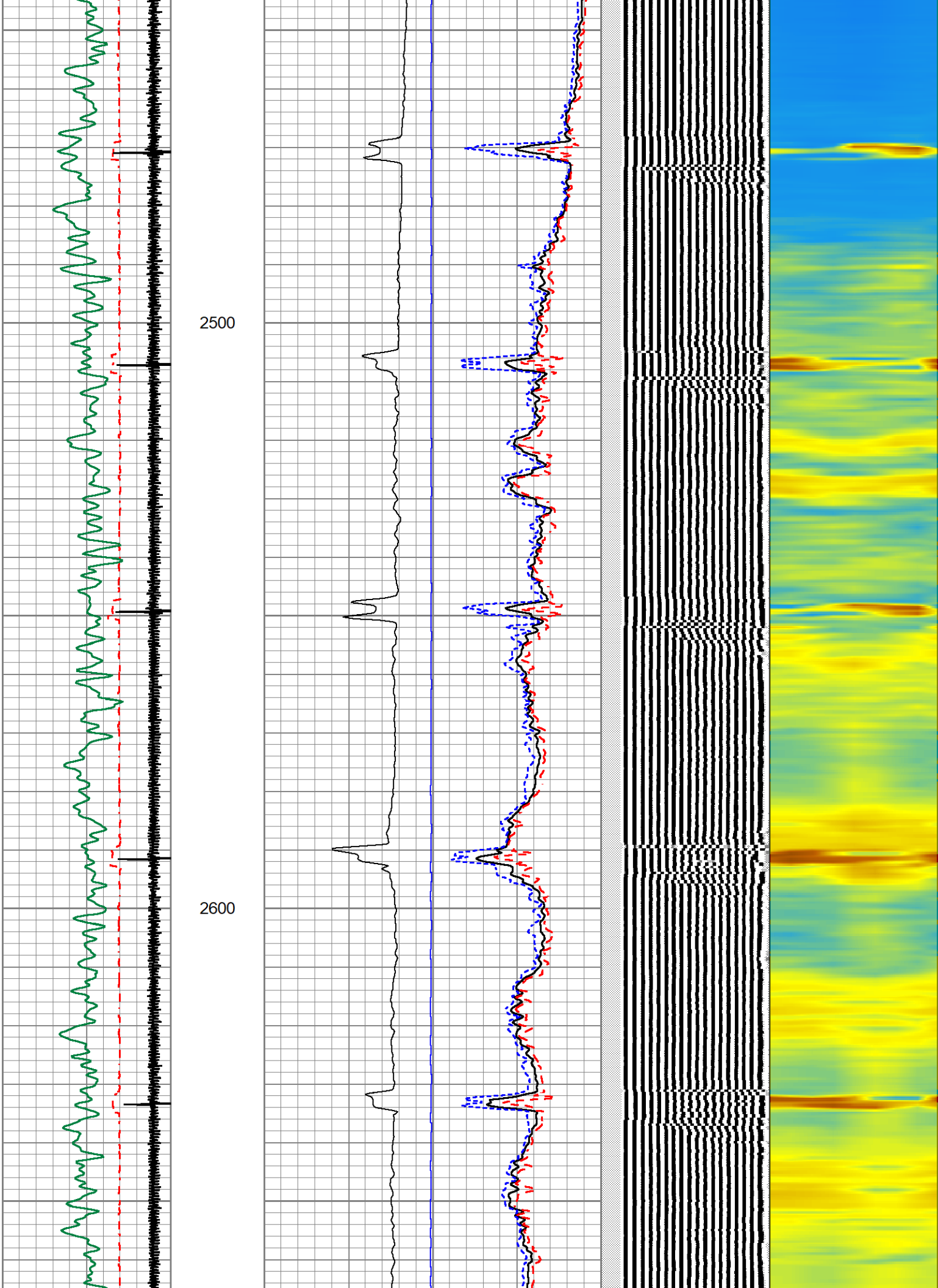
1900

2000



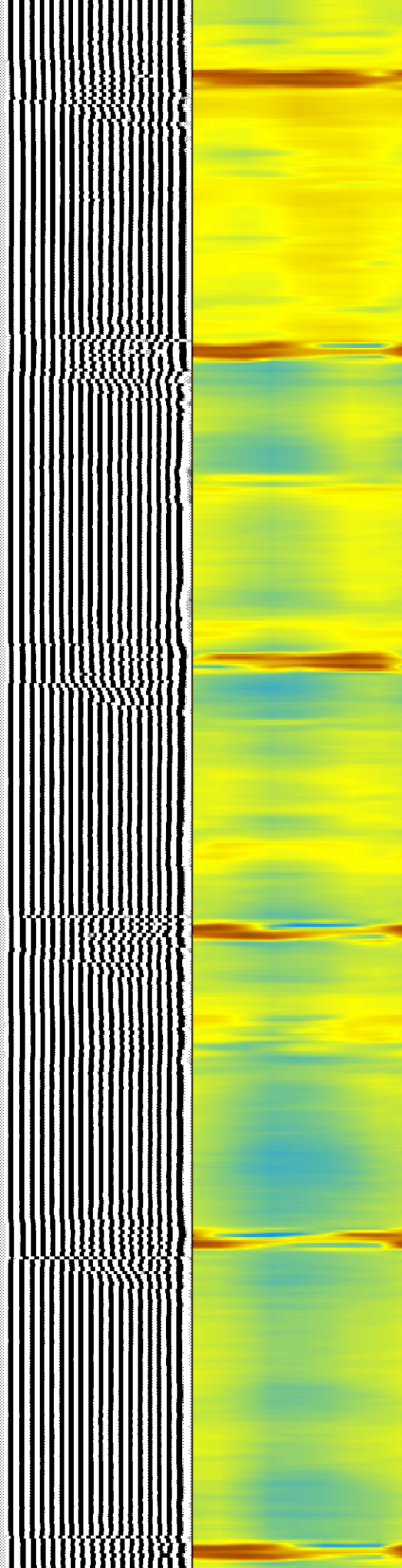
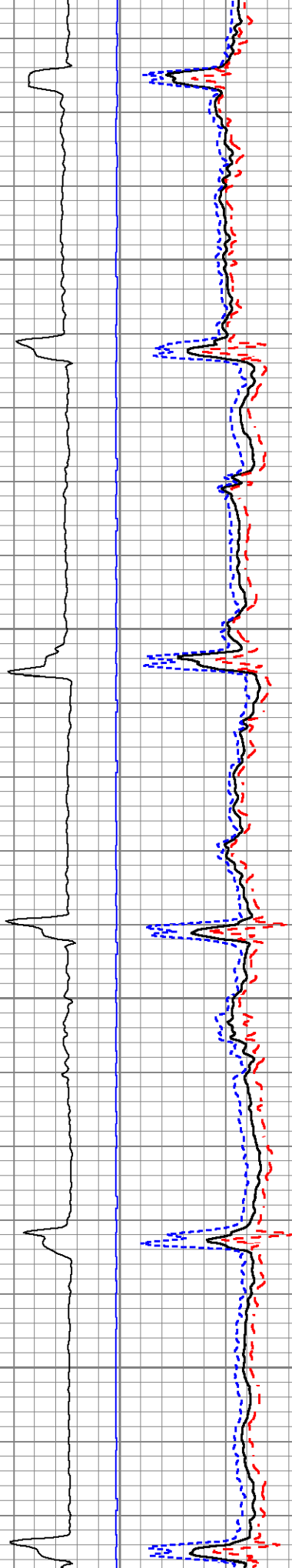
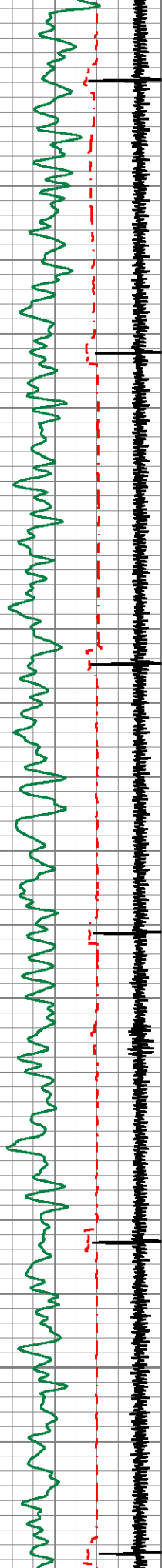






2700

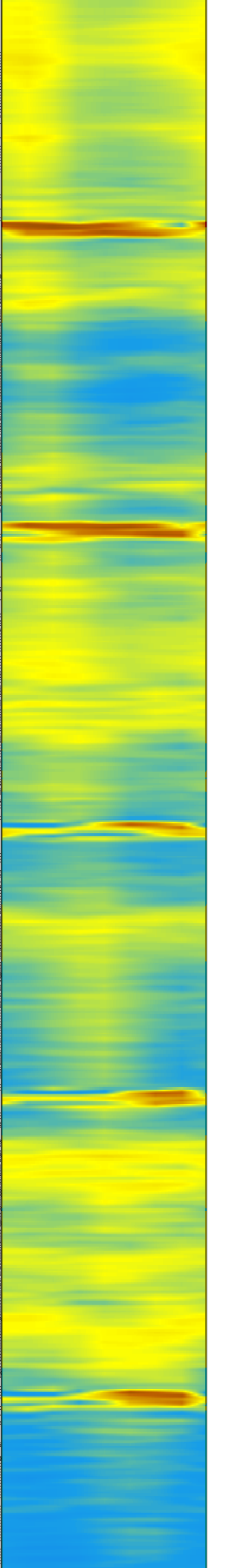
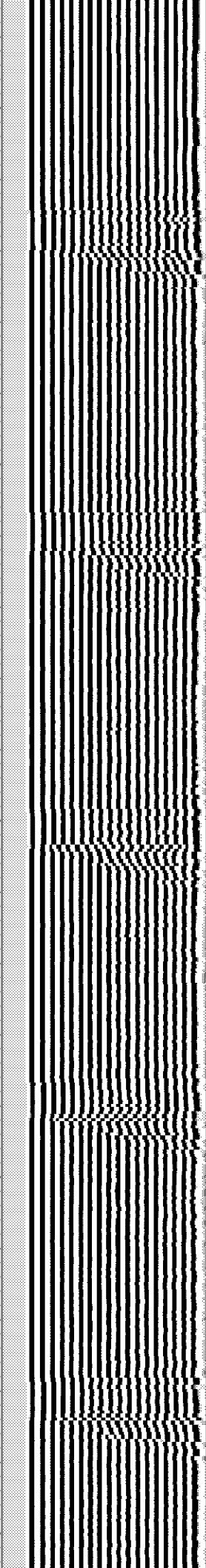
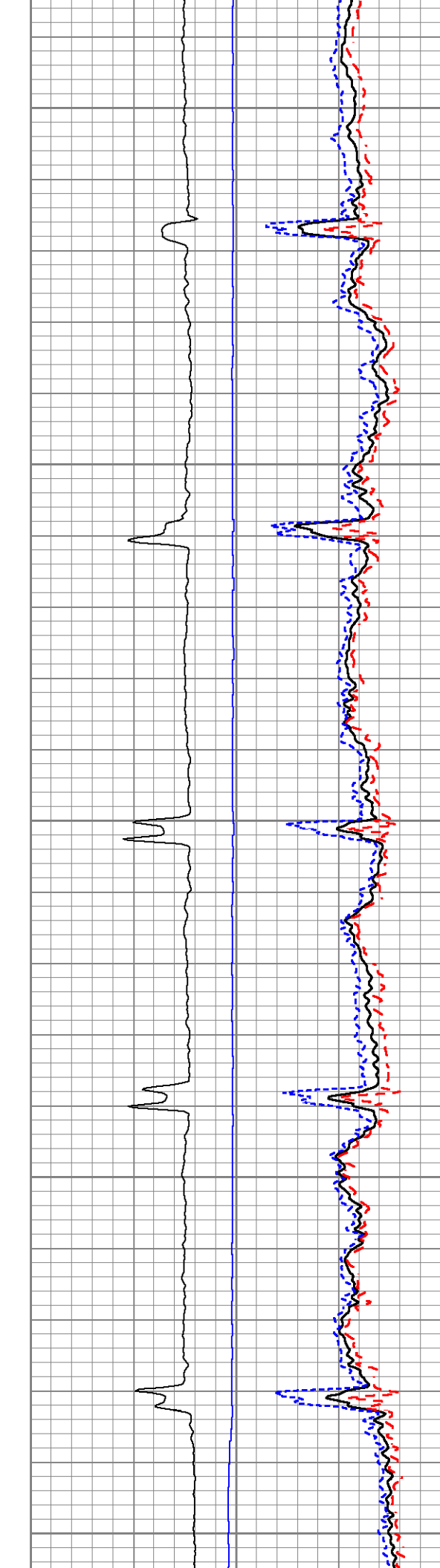
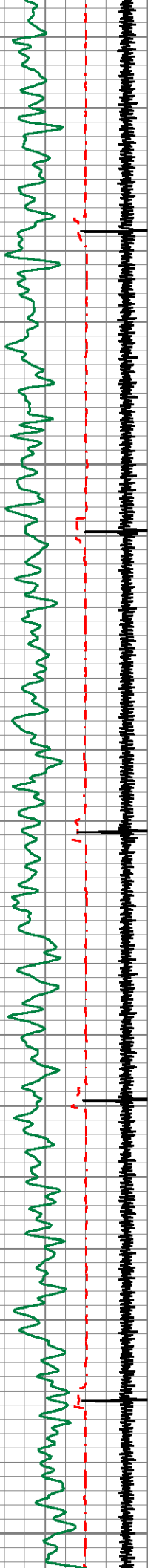
2800

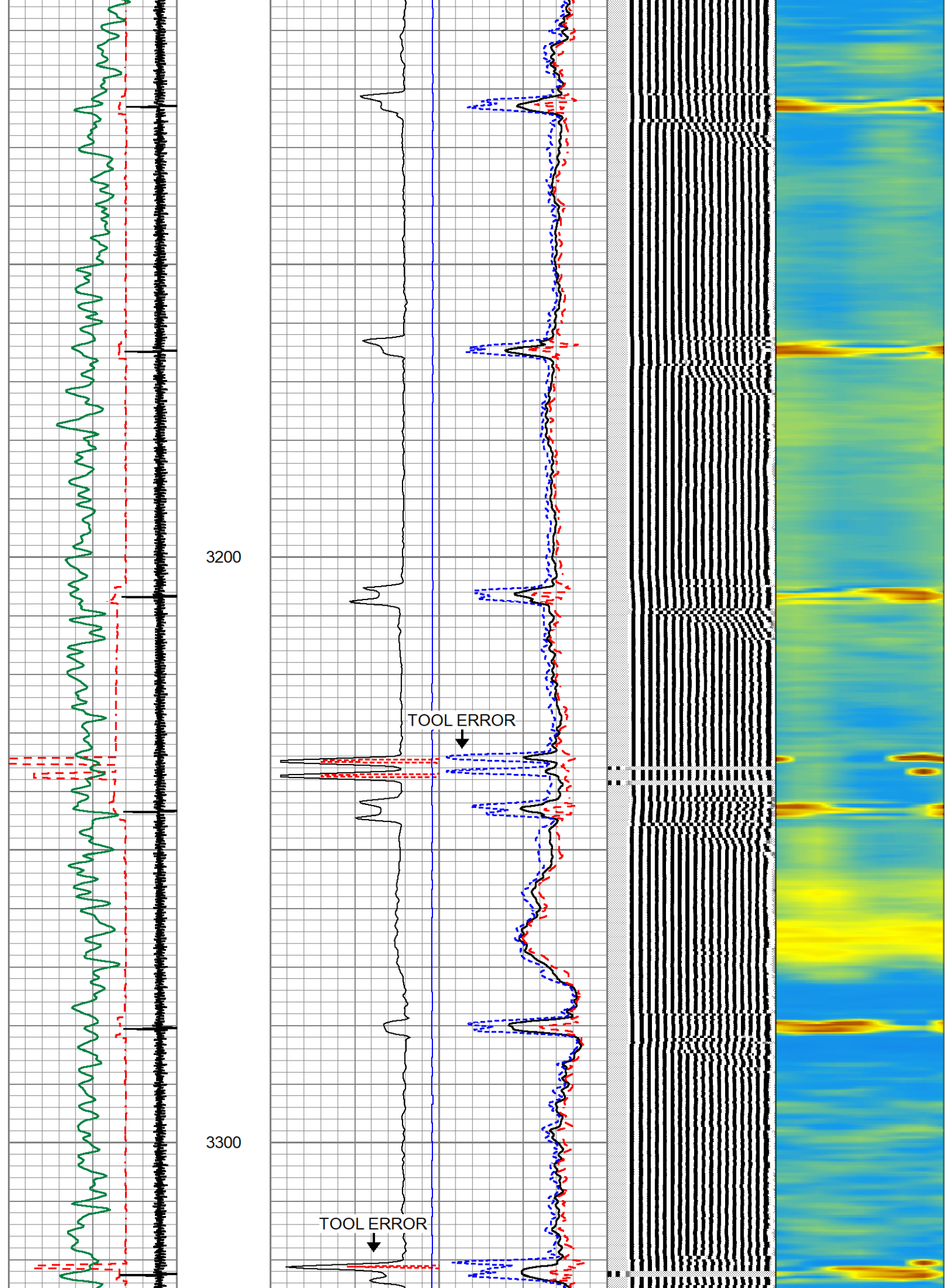


2900

3000

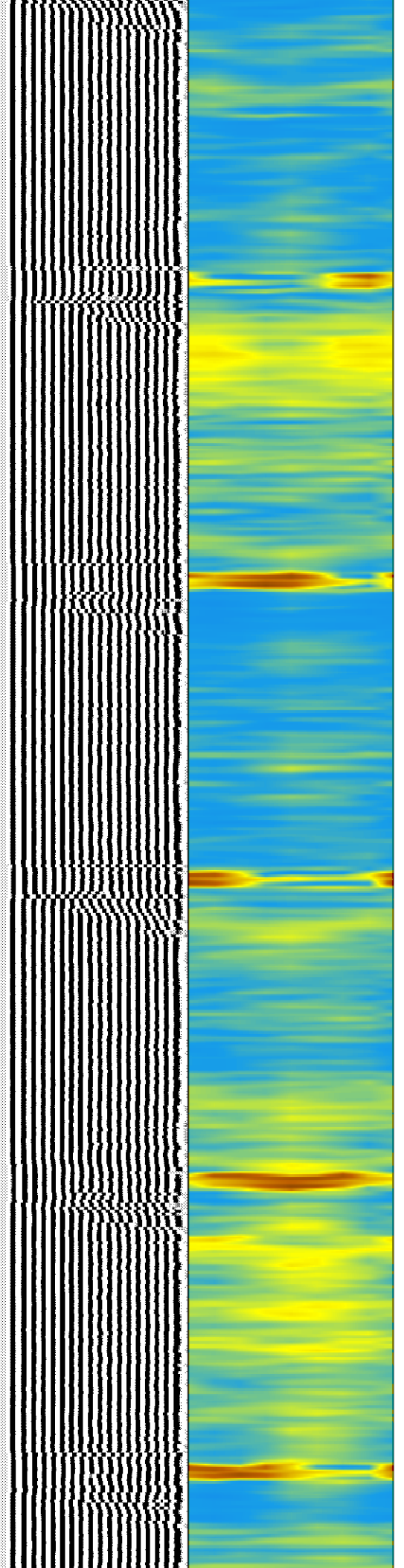
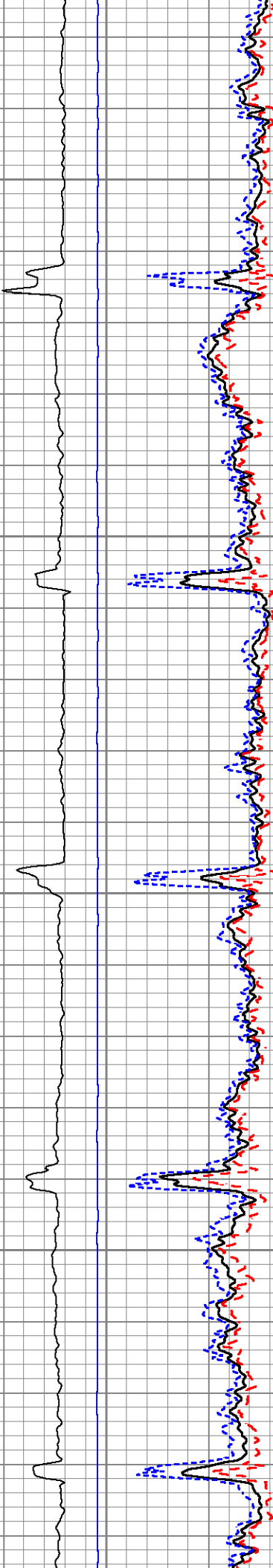
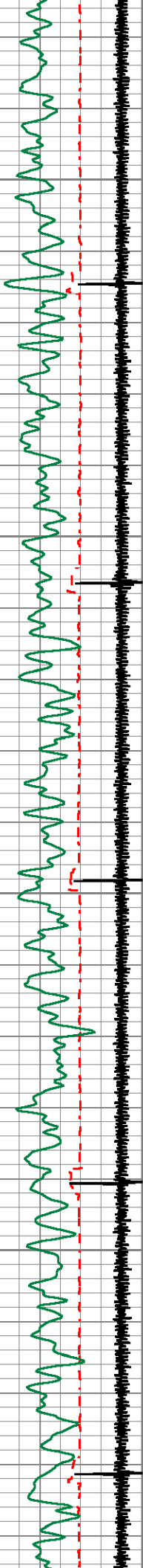
3100





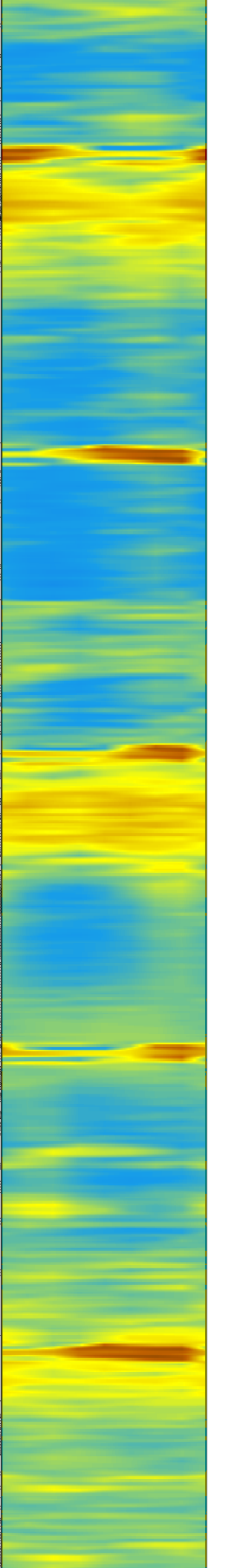
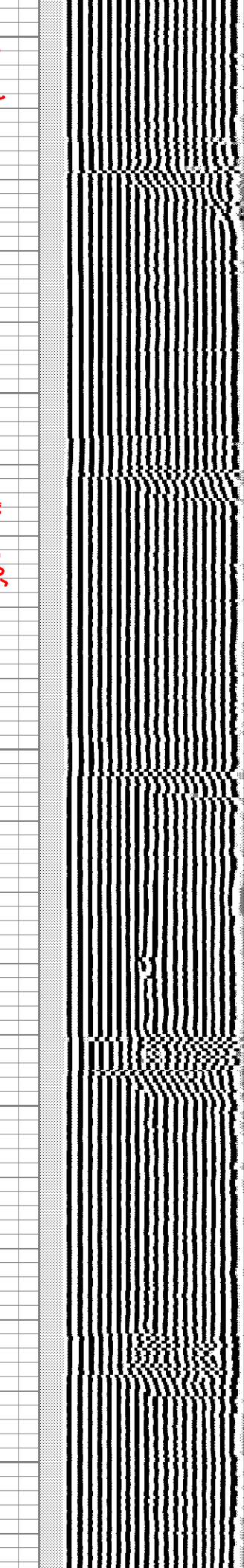
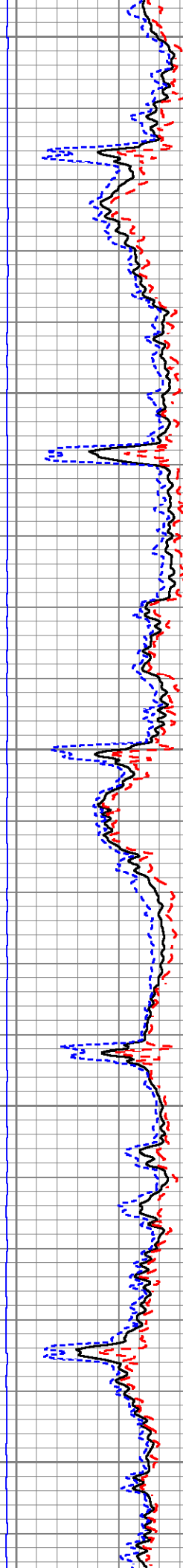
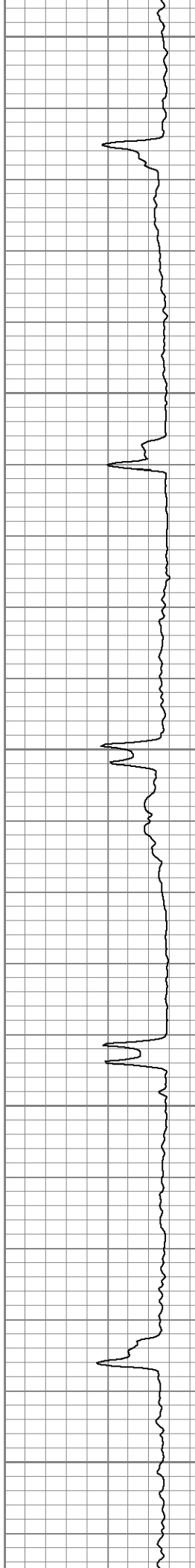
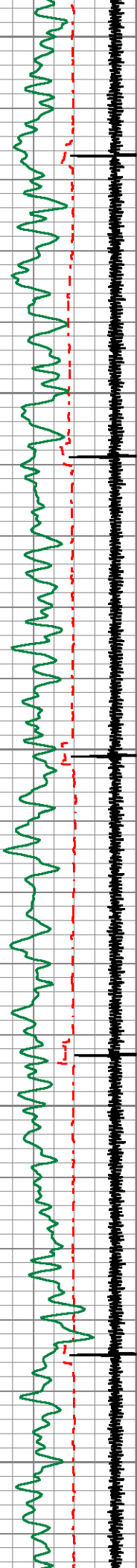
3400

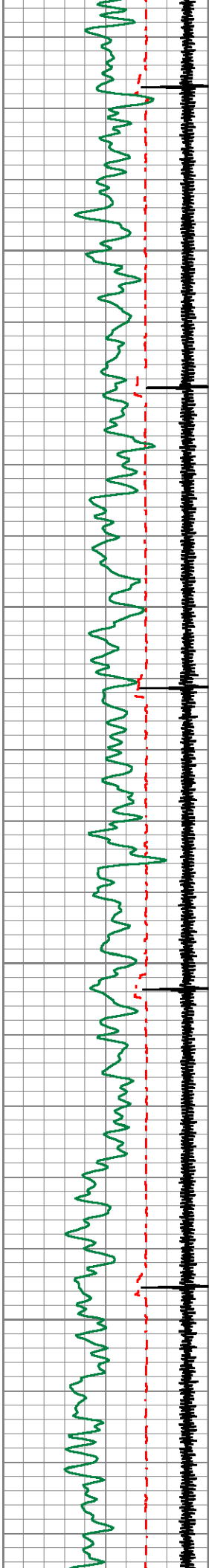
3500



3600

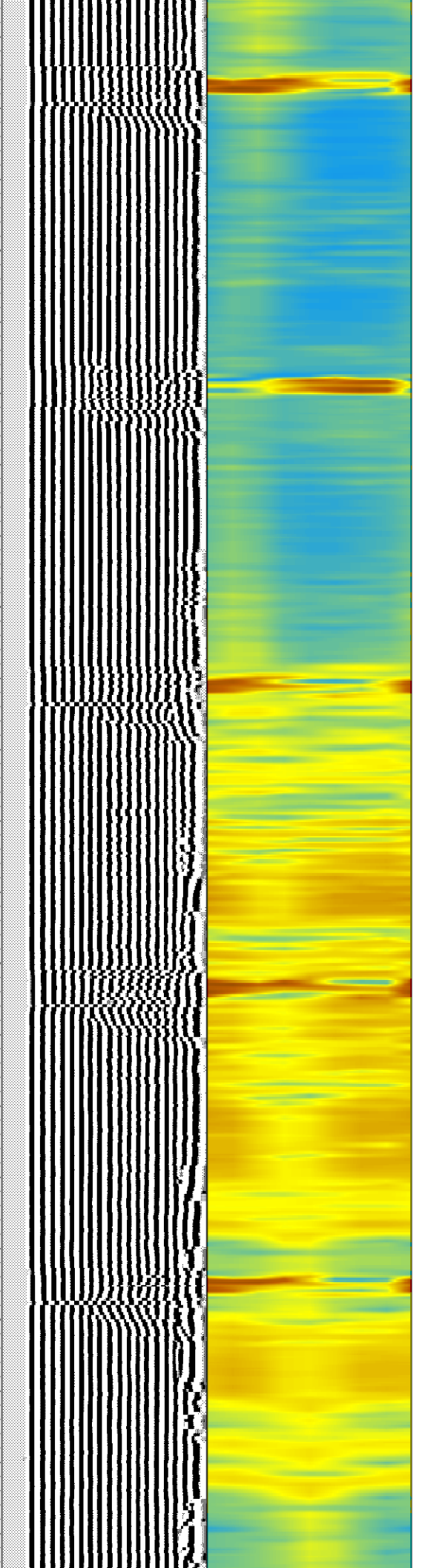
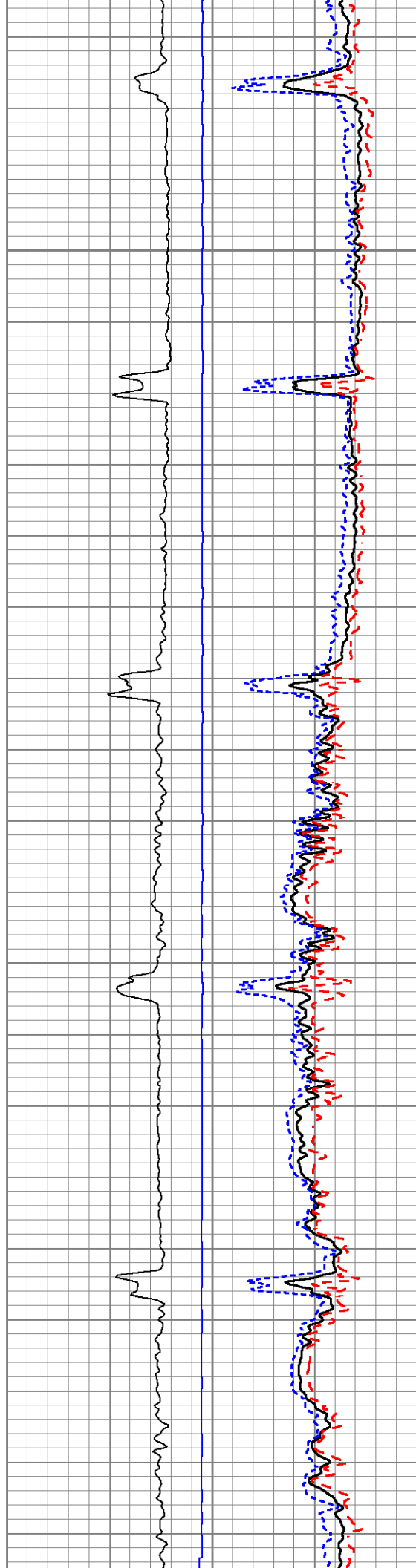
3700

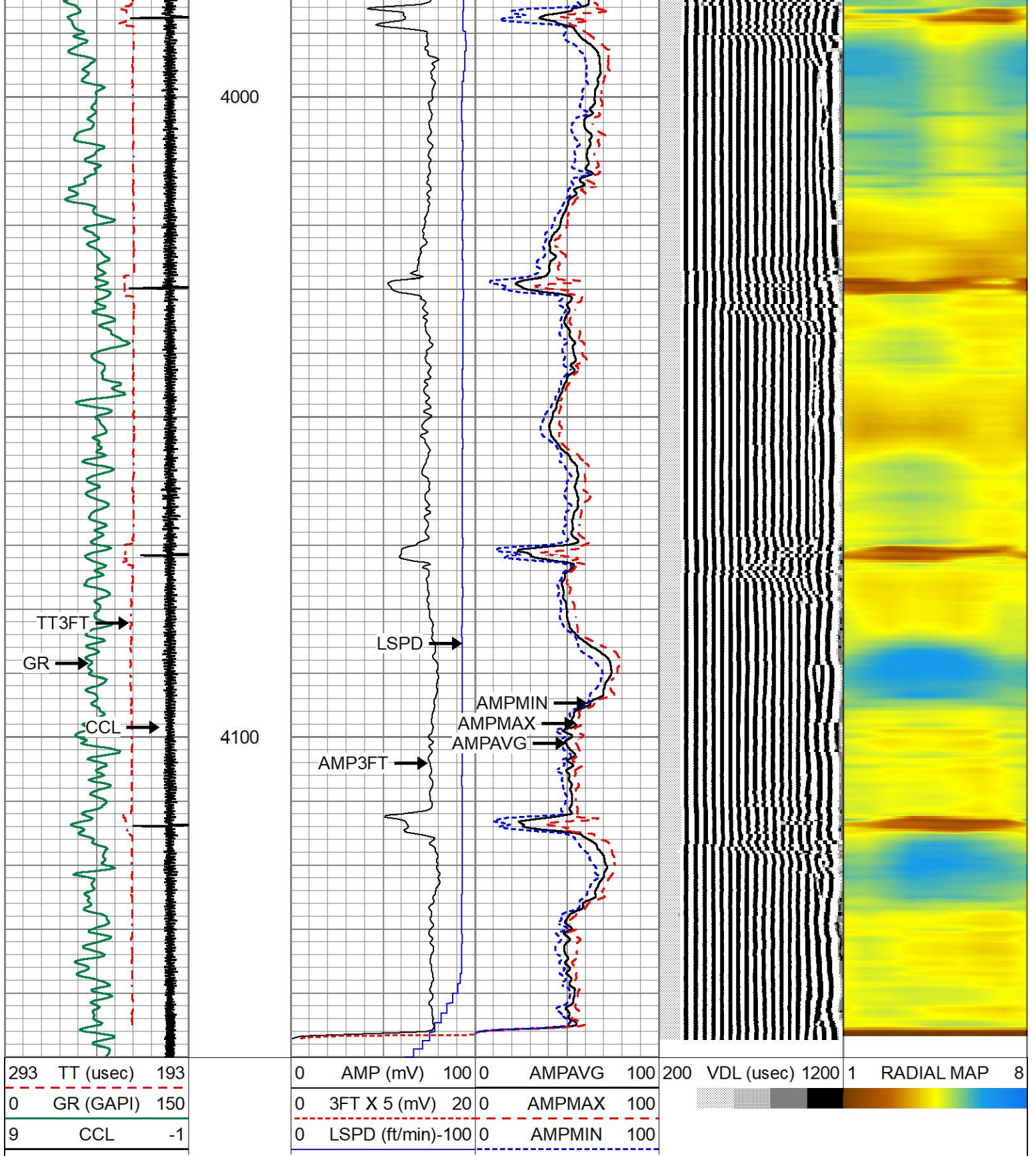




3800

3900





Calibration Report

Database File oxy_hsr-brown_14-1a_0512315143_01102022_scbl.db
 Dataset Pathname pass22
 Dataset Creation Mon Jan 10 12:29:55 2022

Gamma Ray Calibration Report

Serial Number: 0111
 Tool Model: Tek-Co 2 3/4
 Performed: Mon Oct 11 10:08:19 2021

| | | |
|---------------------|--------|----------|
| Calibrator Value: | 1.0 | GAPI |
| Background Reading: | 0.0 | cps |
| Calibrator Reading: | 1.0 | cps |
| Sensitivity: | 0.6500 | GAPI/cps |

Segmented Cement Bond Log Calibration Report

| | | |
|------------------------------|-------------|----|
| Serial Number: | 111 | |
| Tool Model: | 275 No Temp | |
| Calibration Casing Diameter: | 4.500 | in |
| Calibration Depth: | 2463.142 | ft |

Master Calibration, performed Mon Jan 10 12:04:27 2022:

| | Raw (v) | | Calibrated (mv) | | Results | |
|-----|---------|-------|-----------------|--------|---------|--------|
| | Zero | Cal | Zero | Cal | Gain | Offset |
| 3' | 0.000 | 2.268 | 1.000 | 81.196 | 35.352 | 1.000 |
| CAL | 0.000 | 0.386 | | | | |
| 5' | 0.000 | 2.417 | 1.000 | 81.196 | 33.184 | 1.000 |
| SUM | | | | | | |
| S1 | 0.000 | 2.317 | 0.000 | 81.196 | 35.037 | 0.000 |
| S2 | 0.000 | 2.217 | 0.000 | 81.196 | 36.631 | 0.000 |
| S3 | 0.000 | 2.190 | 0.000 | 81.196 | 37.071 | 0.000 |
| S4 | 0.000 | 2.194 | 0.000 | 81.196 | 37.009 | 0.000 |
| S5 | 0.000 | 2.110 | 0.000 | 81.196 | 38.488 | 0.000 |
| S6 | 0.000 | 2.149 | 0.000 | 81.196 | 37.790 | 0.000 |
| S7 | 0.000 | 2.254 | 0.000 | 81.196 | 36.020 | 0.000 |
| S8 | 0.000 | 2.327 | 0.000 | 81.196 | 34.893 | 0.000 |

Internal Reference Calibration, performed (Not Performed):

| | Raw (v) | | Calibrated (v) | | Results | |
|-----|---------|-------|----------------|-------|---------|--------|
| | Zero | Cal | Zero | Cal | Gain | Offset |
| CAL | 0.000 | 0.000 | 0.000 | 0.386 | 1.000 | 0.000 |

Air Zero Calibration, performed Wed Nov 17 13:44:33 2021:

| | Raw (v) | Calibrated (v) | Results |
|-----|---------|----------------|---------|
| | Zero | Zero | Offset |
| 3' | 0.000 | 0.000 | 0.000 |
| 5' | 0.000 | 0.000 | 0.000 |
| SUM | | | |
| S1 | 0.000 | 0.000 | 0.000 |
| S2 | 0.000 | 0.000 | 0.000 |
| S3 | 0.000 | 0.000 | 0.000 |
| S4 | 0.000 | 0.000 | 0.000 |
| S5 | 0.000 | 0.000 | 0.000 |
| S6 | 0.000 | 0.000 | 0.000 |
| S7 | 0.000 | 0.000 | 0.000 |
| S8 | 0.000 | 0.000 | 0.000 |



| | |
|---------|----------------------------|
| Company | OCCIDENTAL PETROLEUM CORP. |
| Well | HSR-BROWN 14-1A |



| | | | |
|--------|----------------|---------|-----|
| Well | NON-BROWN W-11 | | |
| Field | WATTENBERG | | |
| County | WELD | | |
| State | COLORADO | Country | USA |