

LEGAL DESCRIPTION OF USE AREA:

A PARCEL OF LAND BEING A PORTION OF THE EAST HALF OF SECTION 10, TOWNSHIP 4 SOUTH, RANGE 65 WEST OF THE SIXTH PRINCIPAL MERIDIAN, ARAPAHOE COUNTY, COLORADO, MORE PARTICULARLY DESCRIBED AS FOLLOWS: COMMENCING AT THE NORTHEAST CORNER OF SAID SECTION 10, AND CONSIDERING THE EASTERLY LINE OF THE NORTHEAST QUARTER OF SAID SECTION 10 TO BEAR SOUTH 00 DEGREES 00 MINUTES 12 SECONDS EAST, AND ALL BEARINGS ARE MADE AS A REFERENCE HEREON; THENCE ALONG SAID EASTERLY LINE SOUTH 00 DEGREES 00 MINUTES 12 SECONDS EAST 30.00 FEET TO THE SOUTHERLY RIGHT-OF-WAY OF ARAPAHOE COUNTY ROAD NO. 6 AS OPENED BY THE ARAPAHOE COUNTY COMMISSIONERS IN BOOK 6 AT PAGE 431 OF THE RECORDS OF THE CLERK AND RECORDER OF ARAPAHOE COUNTY, COLORADO, AND THE TRUE POINT OF BEGINNING; THENCE CONTINUING ALONG SAID EASTERLY LINE, SOUTH 00 DEGREES 00 MINUTES 12 SECONDS EAST 2605.62 FEET TO THE EAST QUARTER CORNER OF SAID SECTION 10; THENCE ALONG THE EASTERLY LINE OF THE SOUTHEAST QUARTER OF SAID SECTION 10, SOUTH 00 DEGREES 00 MINUTES, 18 SECONDS EAST 2635.72 FEET TO THE SOUTHEAST CORNER OF SAID SECTION 10; THENCE ALONG THE SOUTHERLY LINE OF SAID SOUTHEAST QUARTER OF SAID SECTION 10, SOUTH 88 DEGREES 49 MINUTES 19 SECONDS WEST 2624.73 FEET TO THE SOUTH QUARTER CORNER OF SAID SECTION 10; THENCE ALONG THE WESTERLY LINE OF SAID SOUTHEAST QUARTER, NORTH 00 DEGREES 13 MINUTES 30 SECONDS WEST 2651.33 FEET TO THE CENTER QUARTER CORNER OF SAID SECTION 10; THENCE ALONG THE WESTERLY LINE OF THE NORTHEAST QUARTER OF SAID SECTION 10, NORTH 00 DEGREES 13 MINUTES 30 SECONDS WEST 2621.35 FEET TO SAID SOUTHERLY RIGHT-OF-WAY OF ARAPAHOE COUNTY ROAD NO. 6; THENCE ALONG SAID SOUTHERLY RIGHT-OF-WAY, NORTH 89 DEGREES 30 MINUTES 32 SECONDS EAST 2644.59 FEET TO THE TRUE POINT OF BEGINNING, COUNTY OF ARAPAHOE, STATE OF COLORADO. (AS RECORDED AT RECEPTION NOS. D0123628 AND E1046973)

EXISTING LAND USE:

1. DRY FARM CLASS IIB, IIC, IID, IIIB, IVA

EXISTING ZONING:

1. MU - MIXED USE

STANDARD COUNTY NOTES:

1. THE OWNER(S), DEVELOPER(S), AND/OR SUBDIVIDER(S) OF THE ADMINISTRATIVE ENERGY USE BY SPECIAL REVIEW PLAN KNOWN AS THE SKY RANCH 4-65 10-9 1BH, 2AH, 2BH, 3AH, 3BH, 4AH, 4BH & PROSPER FARMS 4-65 11-12 1BH, 2AH, 2BH, 4AH, 4BH, THEIR RESPECTIVE SUCCESSORS, HEIRS AND/OR ASSIGNS AGREE TO THE FOLLOWING NOTES:

STREET MAINTENANCE:

- IT IS MUTUALLY UNDERSTOOD AND AGREED THAT THE EXISTING ROADWAYS USED TO ACCESS THE SITE, AS SHOWN ON THIS PLAN, WILL NOT BE MAINTAINED BY THE COUNTY. THE OWNERS, DEVELOPERS AND/OR SUBDIVIDERS, THEIR SUCCESSORS AND/OR ASSIGNS IN INTEREST, SHALL BE RESPONSIBLE FOR STREET MAINTENANCE.
- EXISTING ROADS USED TO ACCESS THE SITE LOCATION SHALL BE IMPROVED OR MAINTAINED IN A CONDITION THE SAME AS OR BETTER THAN BEFORE OPERATIONS BEGAN. THE APPLICANT SHALL SCHEDULE AN ONSITE MEETING WITH THE COUNTY INSPECTOR PRIOR TO CONSTRUCTION.
- ACCESS TO COUNTY ROADS WILL BE APPROVED VIA A COUNTY ACCESS PERMIT AND OVERSIZE VEHICLE PERMIT.
- THE APPLICANT IS RESPONSIBLE TO MAINTAIN ALL PUBLIC ROADWAYS AND REPAIR ANY DAMAGE RESULTING FROM APPLICANT'S TRUCK TRAFFIC DURING CONSTRUCTION, DRILLING AND COMPLETION OF THE OIL & GAS WELL.
- THE APPLICANT AND/OR OPERATOR ARE RESPONSIBLE FOR DUST CONTROL FOR THE PAD AND THE ROADWAYS USED DURING THE CONSTRUCTION.

DRAINAGE MAINTENANCE:

THE OPERATOR SHALL BE RESPONSIBLE FOR MAINTENANCE OF ALL DRAINAGE FACILITIES INSTALLED. REQUIREMENTS INCLUDE, BUT ARE NOT LIMITED TO MAINTAINING THE SPECIFIED STORM WATER DETENTION/RETENTION VOLUMES, MAINTAINING OUTLET STRUCTURES, FLOW RESTRICTION DEVICES AND FACILITIES NEEDED TO CONVEY FLOW TO SAID BASINS.

SIGHT TRIANGLE MAINTENANCE:

THE OWNERS OF PRIVATE PROPERTY CONTAINING A TRAFFIC SIGHT TRIANGLE ARE PROHIBITED FROM ERECTING OR GROWING ANY OBSTRUCTIONS OVER THREE FEET IN HEIGHT ABOVE THE ELEVATION OF THE LOWEST POINT ON THE CROWN OF THE ADJACENT ROADWAY WITHIN SAID TRIANGLE.

EMERGENCY ACCESS:

EMERGENCY ACCESS IS GRANTED HERewith OVER AND ACROSS ALL AREAS FOR POLICE, FIRE AND EMERGENCY VEHICLES.

DRIVES, PARKING AREAS, AND UTILITY EASEMENTS MAINTENANCE:

THE OWNERS OF THIS PLAN OR PLAT, THEIR SUCCESSORS, AND/OR ASSIGNS IN INTEREST, THE ADJACENT PROPERTY OWNER(S), HOMEOWNERS ASSOCIATION OR OTHER ENTITY OTHER THAN ARAPAHOE COUNTY, IS RESPONSIBLE FOR MAINTENANCE AND UPKEEP OF ANY AND ALL DRIVES, PARKING AREAS, AND EASEMENTS, I.E.: CROSS-ACCESS EASEMENTS, DRAINAGE EASEMENTS, ETC.

PRIVATE STREET MAINTENANCE:

IT IS MUTUALLY UNDERSTOOD AND AGREED THAT THE PRIVATE ROADWAYS SHOWN ON THIS PLAN ARE NOT IN CONFORMANCE WITH ARAPAHOE COUNTY ROADWAY INFRASTRUCTURE DESIGN AND CONSTRUCTION STANDARDS AND WILL NOT BE MAINTAINED BY THE COUNTY. THE OWNERS, DEVELOPERS, AND/OR SUBDIVIDERS, THEIR SUCCESSORS AND/OR ASSIGNS IN INTEREST, SHALL BE RESPONSIBLE FOR STREET MAINTENANCE.

DRAINAGE LIABILITY:

IT IS THE POLICY OF ARAPAHOE COUNTY THAT IT DOES NOT AND WILL NOT ASSUME LIABILITY FOR THE DRAINAGE FACILITIES DESIGNED AND/OR CERTIFIED BY UELS, LLC. ARAPAHOE COUNTY REVIEWS DRAINAGE PLANS PURSUANT TO COLORADO REVISED STATUTES TITLE 30, ARTICLE 28, BUT CANNOT, ON BEHALF OF CRESTONE PEAK RESOURCES OPERATING, LLC GUARANTEE THAT FINAL DRAINAGE DESIGN REVIEW WILL ABSOLVE CRESTONE PEAK RESOURCES OPERATING, LLC AND/OR THEIR SUCCESSORS AND/OR ASSIGNS OF FUTURE LIABILITY FOR IMPROPER DESIGN. IT IS THE POLICY OF ARAPAHOE COUNTY THAT APPROVAL OF THE FINAL PLAT AND/OR FINAL DEVELOPMENT PLAN DOES NOT IMPLY APPROVAL OF UELS, LLC'S DRAINAGE DESIGN.

SPILL PREVENTION, CONTROL & COUNTERMEASURE PLAN (SPCC):

IN COORDINATION WITH PROFESSIONAL ENVIRONMENTAL ENGINEERS AND PROFESSIONAL FACILITY ENGINEERS, CRESTONE PEAK RESOURCES OPERATING, LLC HAS DEVELOPED AND DESIGNED PRO-ACTIVE SYSTEMS, FLUID TRANSFER PROCESSES, AND DOCUMENTATION MEASURES TO LIMIT THE POTENTIAL OF AN ACCIDENTAL DISCHARGE. THE APPLICANT HAS DEVELOPED AN SPCC PLAN TO ADDRESS THE PROCEDURES RELATIVE TO EMERGENCY RESPONSES TO SPILLS, INCLUDING PREVENTION MEASURES, NOTIFICATION PROTOCOL AND MITIGATION. THE SPCC PLAN SHALL BE KEPT ON THE WELL SITE DURING DRILLING AND COMPLETIONS AND ON CRESTONE PEAK RESOURCES OPERATING, LLC'S INTRANET. OPERATIONS, HEALTH, SAFETY, AND ENVIRONMENTAL PERSONNEL ALL KEEP COPIES OF THE SPCC PLAN ON HAND. FROM THE DATE OF INITIAL PRODUCTION, THE OPERATOR HAS SIX (6) MONTHS TO DEVELOP AN SPCC PLAN. THE OPERATOR SHALL PROVIDE THE SPCC PLAN TO ARAPAHOE COUNTY WHEN COMPLETED.

AIRPORT INFLUENCE AREA
(AVIGATION EASEMENT/HAZARD EASEMENT)

AN AVIGATION AND HAZARD EASEMENT AFFECTING ALL PROPERTY CONTAINED WITHIN THIS OIL & GAS OPERATIONS PLAN HAS BEEN LEGALLY EXECUTED. SAID EASEMENT DOCUMENT CAN BE FOUND IN RECEPTION NUMBERS B4104296, D9061022, D9122669, & E1044179 OF THE RECORDS OF THE ARAPAHOE COUNTY CLERK AND RECORDER.

THE LANDS CONTAINED WITHIN THIS OIL & GAS OPERATIONS PLAN LIE WITHIN THE AIRPORT INFLUENCE AREA, AN AREA WHICH IS LIKELY TO BE AFFECTED BY AIRCRAFT OPERATIONS AND THEIR POTENTIAL NOISE AND/OR CRASH HAZARDS TO A GREATER DEGREE THAN LANDS SITUATED OUTSIDE OF THE INFLUENCE AREA.

ALL LANDS CONTAINED WITHIN THIS OIL & GAS OPERATIONS PLAN SHALL COMPLY WITH F.A.R. PART 77, "HEIGHT AND OBSTRUCTIONS CRITERIA".

ARAPAHOE COUNTY CASE NO. AE20-001

ARAPAHOE COUNTY OIL & GAS OPERATIONS PLAN
ADMINISTRATIVE ENERGY USE BY SPECIAL REVIEWSKY RANCH 4-65 10-9 1BH, 2AH, 2BH, 3AH, 3BH, 4AH, 4BH &
PROSPER FARMS 4-65 11-12 1BH, 2AH, 2BH, 4AH, 4BH

LOCATED IN:

NE1/4 SE1/4 SEC. 10, T4S, R65W, 6TH P.M.
ARAPAHOE COUNTY, COLORADOCERTIFICATE OF USE BY SPECIAL REVIEW
PERMIT HOLDER AND MINERAL/OIL &
GAS INTEREST LEASE HOLDER

I, David Stewart HEREBY AFFIRM THAT I AM THE MINERAL/OIL & GAS INTEREST LEASE HOLDER OR AUTHORIZED AGENT OF THE MINERAL/OIL & GAS INTEREST LEASE HOLDER ON THE PROPERTY DESCRIBED HEREIN, KNOWN AS SKY RANCH 4-65 10-9 1BH, 2AH, 2BH, 3AH, 3BH, 4AH, 4BH & PROSPER FARMS 4-65 11-12 1BH, 2AH, 2BH, 4AH, 4BH, CASE NO: AE20-001.

USE BY SPECIAL REVIEW PERMIT HOLDER & MINERAL / OIL & GAS
INTEREST LEASE HOLDER OR AUTHORIZED AGENT

NOTARIAL CERTIFICATE:

STATE OF ColoradoCOUNTY OF Arapahoe SS

THE FOREGOING INSTRUMENT WAS ACKNOWLEDGED BEFORE

ME THIS 8th DAY OF June, 2021.BY David Stewart, AN AUTHORIZED
SIGNATORY.BY Scott Farkas WITNESS MY HAND AND SEAL
NOTARY PUBLICMY COMMISSION EXPIRES: April 9, 202520214614633

NOTARY ID #

(SEAL)

Scott Farkas
NOTARY PUBLIC
STATE OF COLORADO
NOTARY ID 20214014033
MY COMMISSION EXPIRES April 9, 2025

TO CARRY OUT ONE OR MORE OF THE FOLLOWING AS MAY BE REQUIRED BY THE BOARD OF COUNTY COMMISSIONERS, OWNERS, SUCCESSORS AND ASSIGNS HEREBY AGREE:

- TO INCLUDE SAID DEVELOPMENT WITHIN A SPECIAL DISTRICT FOR THE PURPOSE OF PARTICIPATION IN THE CONSTRUCTION OF NECESSARY OFF-SITE IMPROVEMENTS AT THE TIME OF APPROVAL OF FINAL PLANS.
- TO COOPERATE WITH OTHER OWNERS OF OTHER PARCELS AND/OR OTHER SPECIAL DISTRICTS IN OFF-SITE ROADWAY IMPROVEMENTS AS NECESSITATED BY THE DEVELOPMENT IMPACTS AS MAY BE DETERMINED BY THE BOARD OF COUNTY COMMISSIONERS.
- TO COMPLETE SUCH OTHER IMPROVEMENTS TO PUBLIC ROADWAYS BROUGHT ABOUT OR IMPACTED BY THIS DEVELOPMENT AS MAY BE DETERMINED BY THE BOARD OF COUNTY COMMISSIONERS.
- TO PARTICIPATE AND COOPERATE IN ANY TRANSPORTATION MANAGEMENT PROGRAM AS SPECIFIED IN THE AIRPORT INFLUENCE AREA TRANSPORTATION STUDY, IF SUCH A PROGRAM IS APPROVED AND/OR ADOPTED BY THE BOARD OF COUNTY COMMISSIONERS.

COGCC API:

DATE:

CRESTONE PEAK RESOURCES OPERATING, LLC

SKY RANCH 4-65 10-9 1BH, 2AH, 2BH, 3AH, 3BH, 4AH, 4BH &
PROSPER FARMS 4-65 11-12 1BH, 2AH, 2BH, 4AH, 4BH
NE1/4 SE1/4 SEC. 10, T4S, R65W, 6TH P.M.
ARAPAHOE COUNTY, COLORADO
OIL & GAS OPERATIONS PLAN

REV	DATE	BY	REVISIONS
2	01-10-2020	P.H.	MAKE REVISIONS PER REVIEW
3	07-15-2020	C.J.C.	REVISE WELL LAYOUT AND PRODUCTION FACILITY
4	02-02-2021	C.D.C.	1st REVIEW COMMENTS
5	04-05-2021	C.D.C.	ADD FIRE HYDRANT & 2nd REVIEW COMMENTS
6	04-30-2021	C.D.C.	3rd REVIEW COMMENTS
7	06-01-2021	C.D.C.	FINAL SUBMITTAL

SCALE: NO SCALE

DRAWN BY: C.D.C.

DATE DRAWN: 10-16-2019

UELS FILE NO.: C-7232

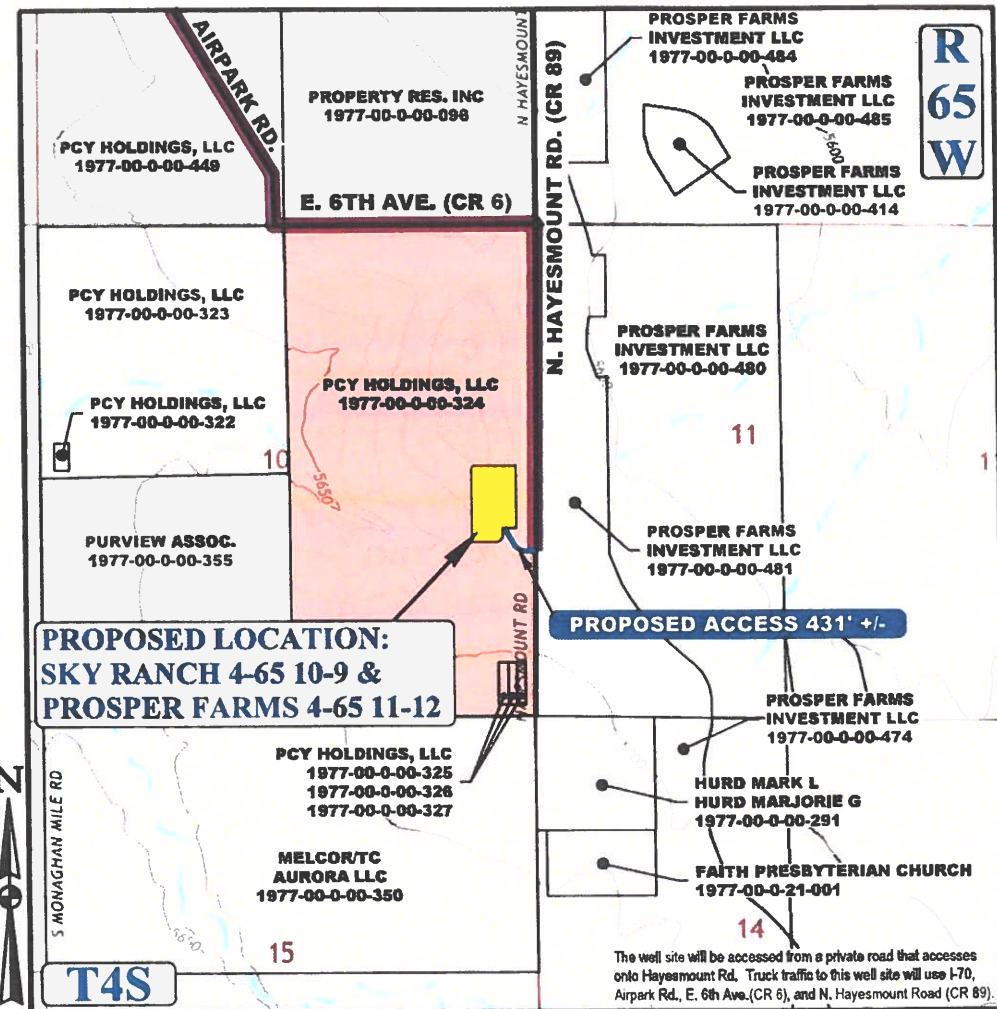
PROJ. NO: CRE03-20-0031 WD1

CIVIL & STRUCTURAL ENGINEERING
AND LAND SURVEYING SERVICES85 South 200 East, Vernal, UT 84078
O: 435.789.1017
www.uintahgroup.com

- SINCE 1964 -

SHEET INDEX	
SHEET TITLE	SHEET NUMBER
COVER SHEET & STANDARD NOTES	1
IMPACT AREA MAP	2
DRILLING OPERATION PLAN	3
PRODUCTION PLAN	4
RECLAMATION PLAN	5
GENERAL NOTES & SIGNAGE DETAILS	6

SURVEY BENCHMARK

BENCHMARK CP-5-JH (PNT-5)
LATITUDE: N39°37'52.25"
LONGITUDE: W104°30'04.26" (NAD 83)
ELEV: 5987.72' (NAVD88)

COAL CREEK, COLORADO - USGS TOPOGRAPHIC QUAD MAP

SCALE: 1" = 2,000' Existing Rd. Proposed Access Rd.
Proposed Access Route

PUBLIC WORKS AND DEVELOPMENT DIRECTOR APPROVAL

(Administrative Energy Use by Special Review)

THE ADMINISTRATIVE ENERGY USE BY SPECIAL REVIEW, AS DEPICTED HEREON
PURSUANT TO SECTION 5-3.5 OF THE ARAPAHOE COUNTY LAND DEVELOPMENT CODE,
HEREON APPROVED THIS 16th DAY OF August, 2021Bryan WeimerBryan Weimer
PUBLIC WORKS AND DEVELOPMENT DIRECTOR OR DESIGNEE

NOTE:

1. NO OTHER OIL AND GAS FACILITIES, SOLAR FACILITIES, POWER TRANSMISSION LINES, ELECTRIC SUBSTATIONS, NATURAL GAS TRANSMISSION LINES, AND OTHER SIMILAR SUCH ENERGY FACILITY EQUIPMENT OR ENERGY PRODUCTION SITES, BASED ON PUBLICLY AVAILABLE RESOURCES, ARE LOCATED WITHIN THE ONE MILE BUFFER AREA.

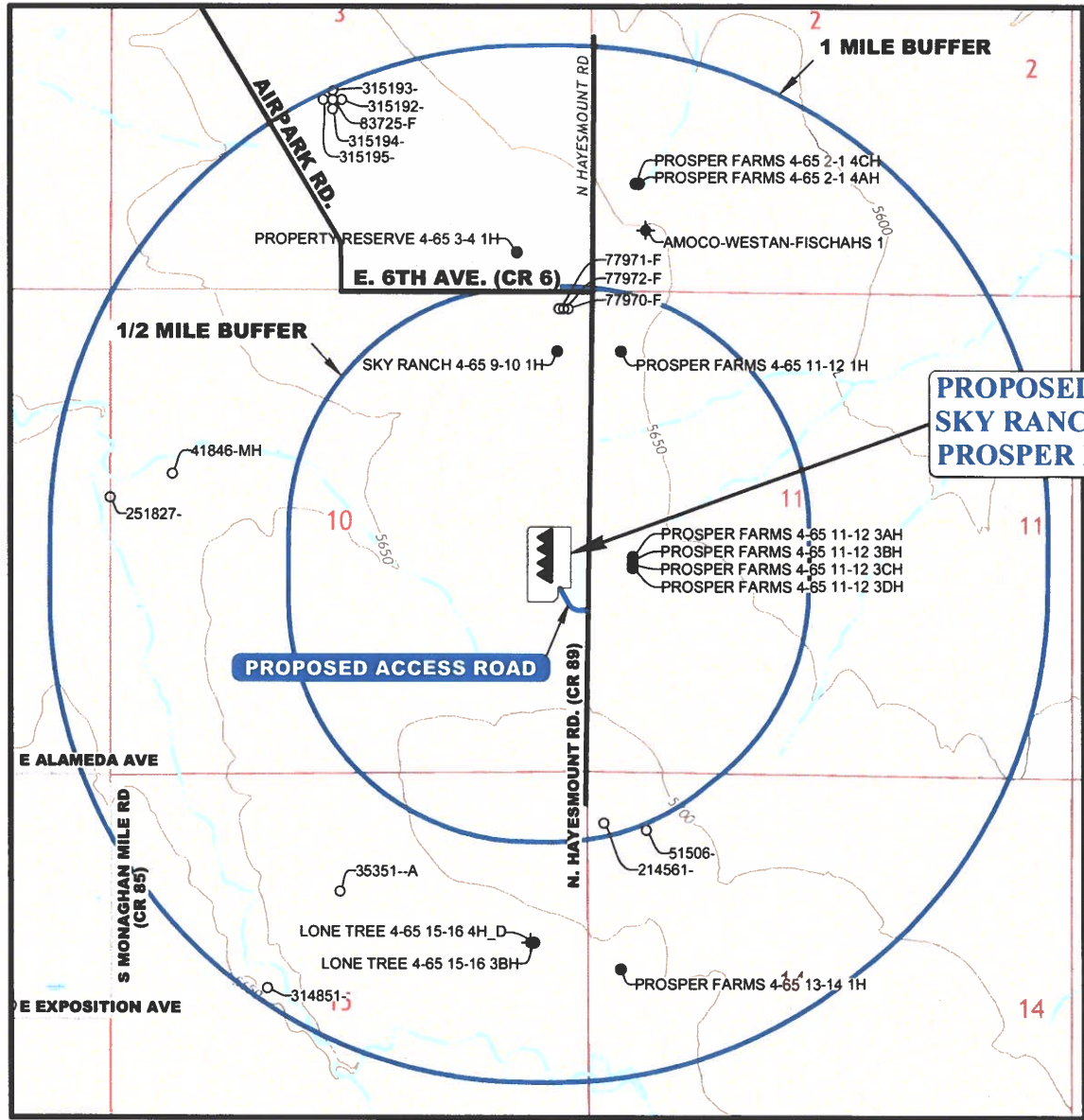
ARAPAHOE COUNTY OIL & GAS OPERATIONS PLAN
ADMINISTRATIVE ENERGY USE BY SPECIAL REVIEW

SKY RANCH 4-65 10-9 1BH, 2AH, 2BH, 3AH, 3BH, 4AH, 4BH &
PROSPER FARMS 4-65 11-12 1BH, 2AH, 2BH, 4AH, 4BH

LOCATED IN:
NE1/4 SE1/4 SEC. 10, T4S, R65W, 6TH P.M.
ARAPAHOE COUNTY, COLORADO

LEGEND

◀	PROPOSED OIL AND GAS WELL SITE
●	PERMITTED OIL AND GAS WELL SITE PER COGCC GIS ONLINE DECEMBER, 2020
⬮	ABANDONED OIL AND GAS WELL SITE PER COGCC GIS ONLINE DECEMBER, 2020
○	PERMITTED WATER WELL PER COLORADO DIVISION OF WATER RESOURCES DECEMBER, 2020



PROPOSED LOCATION:
SKY RANCH 4-65 10-9 &
PROSPER FARMS 4-65 11-12

1-MILE IMPACT AREA MAP
SCALE: 1" = 2000'

PERMITTED WATER WELLS					
WELL PERMIT NUMBER	APPROX DISTANCE FROM WELL (FT)	SAMPLING PRIORITY	CURRENT PROPERTY OWNER (TAX RECORDS)	WELL DEPTH	WELL OWNER (WELL PERMIT)
77971-F	2653	1	PCY HOLDINGS LLC	1464	PCY HOLDINGS LLC
77972-F	2656	2	PCY HOLDINGS LLC	1464	PCY HOLDINGS LLC
77970-F	2660	3	PCY HOLDINGS LLC	2006	PCY HOLDINGS LLC
51506-	3048	4	HURD MARK L, HURD MARJORIE G	667	HURD, MARK L
214561-	2838	5	HURD MARK L, HURD MARJORIE G	PI	HURD, MARK L
35351-A	4209	6	MELCOR/TC AURORA LLC	650	SMITH, WILBUR
41846-MH	4238	7	PCY HOLDINGS LLC		US GEOLOGICAL SURVEY
251827-	4872	8	PCY HOLDINGS LLC	19	US GEOLOGICAL SURVEY
83725-F	5473	9	PCY HOLDINGS LLC	1445	PCY HOLDINGS LLC
314851-	5535	10	MELCOR/TC AURORA LLC	505	LOERA, MAURO
315194-	5382	11	PCY HOLDINGS LLC	PI	PCY HOLDINGS LLC
315192-	5430	12	PCY HOLDINGS LLC	PI	PCY HOLDINGS LLC
315195-	5518	13	PCY HOLDINGS LLC	PI	PCY HOLDINGS LLC
315193-	5565	14	PCY HOLDINGS LLC	PI	PCY HOLDINGS LLC

DISTANCES FROM WELLHEAD																						
WELL NAME	BUILDING		BUILDING UNIT		HIGH OCCU. BUILDING		D.O.A.A.		PUBLIC ROAD		ABOVE GROUND UTILITY		RAILROAD		PROPERTY LINE		CHILD CARE FACILITY		SCHOOL FACILITY		SCHOOL PROPERTY LINE	
	DIRECTION	LENGTH	DIRECTION	LENGTH	DIRECTION	LENGTH	DIRECTION	LENGTH	DIRECTION	LENGTH	DIRECTION	LENGTH	DIRECTION	LENGTH	DIRECTION	LENGTH	DIRECTION	LENGTH	DIRECTION	LENGTH	DIRECTION	LENGTH
SKY RANCH 4-65 10-9 1BH	SE	2566'	SE	2566'	OVER 1 MILE	OVER 1 MILE	EAST	427'	EAST	414'	OVER 1 MILE	EAST	440'	OVER 1 MILE	EAST	440'	OVER 1 MILE	OVER 1 MILE	OVER 1 MILE	OVER 1 MILE	OVER 1 MILE	OVER 1 MILE
SKY RANCH 4-65 10-9 2AH	SE	2547'	SE	2547'	OVER 1 MILE	OVER 1 MILE	EAST	427'	EAST	414'	OVER 1 MILE	EAST	440'	OVER 1 MILE	EAST	440'	OVER 1 MILE	OVER 1 MILE	OVER 1 MILE	OVER 1 MILE	OVER 1 MILE	OVER 1 MILE
PROSPER FARMS 4-65 11-12 1BH	SE	2527'	SE	2527'	OVER 1 MILE	OVER 1 MILE	EAST	427'	EAST	414'	OVER 1 MILE	EAST	440'	OVER 1 MILE	EAST	440'	OVER 1 MILE	OVER 1 MILE	OVER 1 MILE	OVER 1 MILE	OVER 1 MILE	OVER 1 MILE
SKY RANCH 4-65 10-9 2BH	SE	2508'	SE	2508'	OVER 1 MILE	OVER 1 MILE	EAST	427'	EAST	414'	OVER 1 MILE	EAST	440'	OVER 1 MILE	EAST	440'	OVER 1 MILE	OVER 1 MILE	OVER 1 MILE	OVER 1 MILE	OVER 1 MILE	OVER 1 MILE
PROSPER FARMS 4-65 11-12 2AH	SE	2488'	SE	2488'	OVER 1 MILE	OVER 1 MILE	EAST	427'	EAST	414'	OVER 1 MILE	EAST	440'	OVER 1 MILE	EAST	440'	OVER 1 MILE	OVER 1 MILE	OVER 1 MILE	OVER 1 MILE	OVER 1 MILE	OVER 1 MILE
PROSPER FARMS 4-65 11-12 2BH	SE	2469'	SE	2469'	OVER 1 MILE	OVER 1 MILE	EAST	427'	EAST	414'	OVER 1 MILE	EAST	440'	OVER 1 MILE	EAST	440'	OVER 1 MILE	OVER 1 MILE	OVER 1 MILE	OVER 1 MILE	OVER 1 MILE	OVER 1 MILE
SKY RANCH 4-65 10-9 3AH	SE	2449'	SE	2449'	OVER 1 MILE	OVER 1 MILE	EAST	427'	EAST	414'	OVER 1 MILE	EAST	440'	OVER 1 MILE	EAST	440'	OVER 1 MILE	OVER 1 MILE	OVER 1 MILE	OVER 1 MILE	OVER 1 MILE	OVER 1 MILE
SKY RANCH 4-65 10-9 3BH	SE	2430'	SE	2430'	OVER 1 MILE	OVER 1 MILE	EAST	427'	EAST	414'	OVER 1 MILE	EAST	440'	OVER 1 MILE	EAST	440'	OVER 1 MILE	OVER 1 MILE	OVER 1 MILE	OVER 1 MILE	OVER 1 MILE	OVER 1 MILE
PROSPER FARMS 4-65 11-12 4AH	SE	2410'	SE	2410'	OVER 1 MILE	OVER 1 MILE	EAST	427'	EAST	414'	OVER 1 MILE	EAST	440'	OVER 1 MILE	EAST	440'	OVER 1 MILE	OVER 1 MILE	OVER 1 MILE	OVER 1 MILE	OVER 1 MILE	OVER 1 MILE
PROSPER FARMS 4-65 11-12 4BH	SE	2391'	SE	2391'	OVER 1 MILE	OVER 1 MILE	EAST	427'	EAST	414'	OVER 1 MILE	EAST	440'	OVER 1 MILE	EAST	440'	OVER 1 MILE	OVER 1 MILE	OVER 1 MILE	OVER 1 MILE	OVER 1 MILE	OVER 1 MILE
SKY RANCH 4-65 10-9 4AH	SE	2371'	SE	2371'	OVER 1 MILE	OVER 1 MILE	EAST	427'	EAST	414'	OVER 1 MILE	EAST	440'	OVER 1 MILE	EAST	440'	OVER 1 MILE	OVER 1 MILE	OVER 1 MILE	OVER 1 MILE	OVER 1 MILE	OVER 1 MILE
SKY RANCH 4-65 10-9 4BH	SE	2352'	SE	2352'	OVER 1 MILE	OVER 1 MILE	EAST	427'	EAST	414'	OVER 1 MILE	EAST	440'	OVER 1 MILE	EAST	440'	OVER 1 MILE	OVER 1 MILE	OVER 1 MILE	OVER 1 MILE	OVER 1 MILE	OVER 1 MILE

DISTANCES FROM PRODUCTION EQUIPMENT																						
PRODUCTION FEATURE	BUILDING (FROM TEST SEPARATOR)		BUILDING UNIT (FROM TEST SEPARATOR)		HIGH OCCU. BUILDING		D.O.A.A.		PUBLIC ROAD (FROM LACT)		ABOVE GROUND UTILITY (FROM LACT)		RAILROAD		PROPERTY LINE (FROM LACT)		CHILD CARE FACILITY		SCHOOL FACILITY		SCHOOL PROPERTY LIN	
	DIRECTION	LENGTH	DIRECTION	LENGTH	DIRECTION	LENGTH	DIRECTION	LENGTH	DIRECTION	LENGTH	DIRECTION	LENGTH	DIRECTION	LENGTH	DIRECTION	LENGTH	DIRECTION	LENGTH	DIRECTION	LENGTH	DIRECTION	LENGTH
PRODUCTION EQUIPMENT	SE	2201'	SE	2201'	OVER 1 MILE		OVER 1 MILE		EAST	197'	EAST	184'	OVER 1 MILE		EAST	210'	OVER 1 MILE		OVER 1 MILE		OVER 1 MILE	

NOTE:

DISTANCES SHOWN ARE FROM THE NEAREST WELL OR PRODUCTION FACILITY EQUIPMENT

CRESTONE PEAK RESOURCES OPERATING, LLC
SKY RANCH 4-65 10-9 1BH, 2AH, 2BH, 3AH, 3BH, 4AH, 4BH &
PROSPER FARMS 4-65 11-12 1BH, 2AH, 2BH, 4AH, 4BH
NE1/4 SE1/4 SEC. 10, T4S, R65W, 6TH P.M.
ARAPAHOE COUNTY, COLORADO
OIL & GAS OPERATIONS PLAN

REV	DATE	BY	REVISIONS
2	01-10-2020	P.H.	MAKE REVISIONS PER REVIEW
3	07-15-2020	C.J.C.	REVISE WELL LAYOUT AND PRODUCTION FACILITY
4	02-02-2021	C.D.C.	1st REVIEW COMMENTS
5	04-05-2021	C.D.C.	ADD FIRE HYDRANT & 2nd REVIEW COMMENTS
6	04-30-2021	C.D.C.	3rd REVIEW COMMENTS
7	06-01-2021	C.D.C.	FINAL SUBMITTAL

SCALE: AS NOTED
DRAWN BY: C.D.C.
DATE DRAWN: 10-16-2019
UELS FILE NO.: C-7232
PROJ. NO: CRE03-20-0031 WD1



CIVIL & STRUCTURAL ENGINEERING
AND LAND SURVEYING SERVICES

85 South 200 East, Vernal, UT 84078
O: 435.789.1017
www.uintahgroup.com

- SINCE 1964 -

IMPACT
AREA MAP

SHEET
2
OF 6

ARAPAHOE COUNTY OIL & GAS OPERATIONS PLAN
ADMINISTRATIVE ENERGY USE BY SPECIAL REVIEW

SKY RANCH 4-65 10-9 1BH, 2AH, 2BH, 3AH, 3BH, 4AH, 4BH &
PROSPER FARMS 4-65 11-12 1BH, 2AH, 2BH, 4AH, 4BH

LOCATED IN:
NE1/4 SE1/4 SEC. 10, T4S, R65W, 6TH P.M.
ARAPAHOE COUNTY, COLORADO

LEGEND:

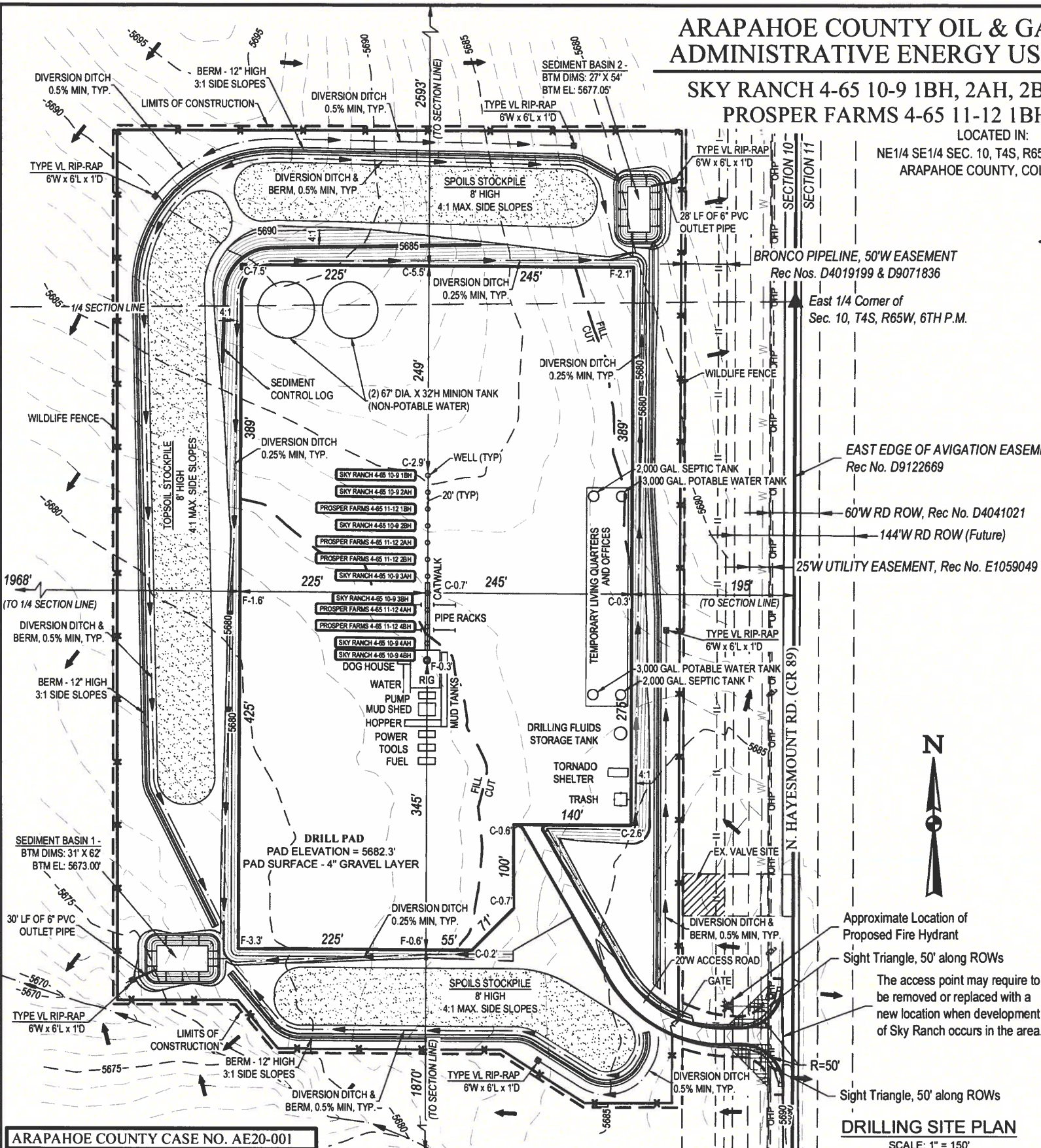
---0000---	EXISTING MAJOR CONTOUR (5')
---0000---	EXISTING MINOR CONTOUR (1')
---0000---	PROPOSED MAJOR CONTOUR (5')
---0000---	PROPOSED MINOR CONTOUR (1')
---	LIMITS OF CONSTRUCTION
---	PAD BOUNDARY
---	DRAINAGE OR DIVERSION DITCH
---	EXISTING BURIED PIPELINE
---	PROPOSED BURIED PIPELINE
---	SIGHT TRIANGLES
---	EXISTING WATER LINE
---	HYDRANT

Drilling Equipment
Representative Dimension Table

Item	Qty	Length (ft)	Width (ft)	Height (ft)	Diameter (ft)
Hopper	1	51	12	12	
Mud Shed	1	33	14	11	
Mud Tanks	2	45	11	11	
Drilling Rig	1	45	35	100	
Pump	1	33	14	11	
Power	1	30	11	11	
Tools	1	43	12	11	
Fuel	1	30	11	10	
Dog House	1	29	10	9	
Catwalk	2	58	9	8	
Pipe Rack (long)	2	60	-	-	
Pipe Rack (short)	2	26	-	-	
Water Tank	1	47	10	11	
Drilling Fluids Storage Tank	1	-	-	20	16
Trash Dumpster	1	15	15	6	
Minion Tank	2	-	-	32	67
Temp Living	1	350	50	14	
Septic Tank	2	-	-	4	12
Potable Water Tank	2	-	-	4	12
Tornado Shelter	1	24	10	10	

NOTE:

1. DRILLING SITE PLAN LAYOUT IS FOR GRAPHICAL PURPOSES ONLY. ACTUAL SITE PLAN MAY VARY, INCLUDING ACCESS POINTS. COUNTY ENGINEER REVIEW IS REQUIRED PRIOR TO CHANGING ACCESS POINTS.
2. MARKERS AT THE CORNERS AND CENTER OF PAD LABELED WITH A "C" OR "F" SIGNIFY "CUT" OR "FILL" DEPTHS FROM EXISTING GROUND TO PROPOSED GROUND.
3. DELIVERY OF NON-POTABLE WATER FOR POTENTIAL STORAGE SHALL BE ACHIEVED WITH TEMPORARY OVERLAND PIPE OR DELIVERY TRUCK. IF WATER IS HAULED, THE PUBLIC WATER SYSTEM IDENTIFICATION NUMBER (PWSID) SHALL BE SUPPLIED TO TRI-COUNTY HEALTH DEPARTMENT (TCHD).
4. SETBACKS FOR INDIVIDUAL SEWAGE DISPOSAL SYSTEMS SHALL CONFORM TO TCHD REGULATION NO. O-14. VAULT SYSTEMS SHALL BE PERMITTED AND INSPECTED BY TCHD.
5. REFER TO GESC PLANS FOR RIPRAP DIMENSIONS.
6. THE SITE LIMITS OF CONSTRUCTION ARE APPROXIMATELY 1,100' X 690' FOR THE PAD SITE AND THE TOTAL AREA OF DISTURBANCE IS 17.4 ACRES.
7. REFER TO GESC PLAN FOR SEEDING SPECIFICATIONS.



ARAPAHOE COUNTY CASE NO. AE20-001

CRESTONE PEAK RESOURCES OPERATING, LLC
SKY RANCH 4-65 10-9 1BH, 2AH, 2BH, 3AH, 3BH, 4AH, 4BH &
PROSPER FARMS 4-65 11-12 1BH, 2AH, 2BH, 4AH, 4BH
NE1/4 SE1/4 SEC. 10, T4S, R65W, 6TH P.M.
ARAPAHOE COUNTY, COLORADO
OIL & GAS OPERATIONS PLAN

REV	DATE	BY	REVISIONS
2	01-10-2020	P.H.	MAKE REVISIONS PER REVIEW
3	07-15-2020	C.J.C.	REVISE WELL LAYOUT AND PRODUCTION FACILITY
4	02-02-2021	C.D.C.	1st REVIEW COMMENTS
5	04-05-2021	C.D.C.	ADD FIRE HYDRANT & 2nd REVIEW COMMENTS
6	04-30-2021	C.D.C.	3rd REVIEW COMMENTS
7	06-01-2021	C.D.C.	FINAL SUBMITTAL

SCALE: AS NOTED
DRAWN BY: C.D.C.
DATE DRAWN: 10-16-2019
UELS FILE NO.: C-7232
PROJ. NO: CRE03-20-0031 WDI



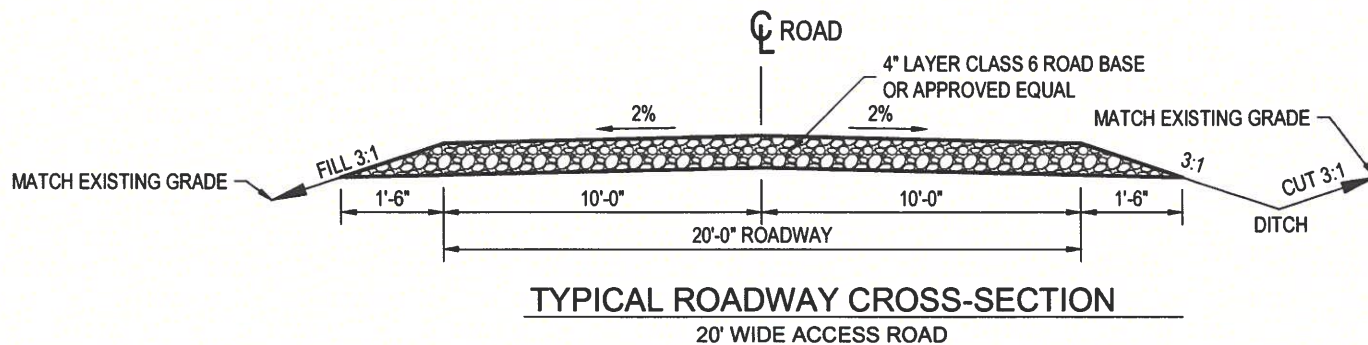
CIVIL & STRUCTURAL ENGINEERING
AND LAND SURVEYING SERVICES

85 South 200 East, Vernal, UT 84078
O: 435.789.1017
www.uintahgroup.com

- SINCE 1964 -

**DRILLING
OPERATION
PLAN**

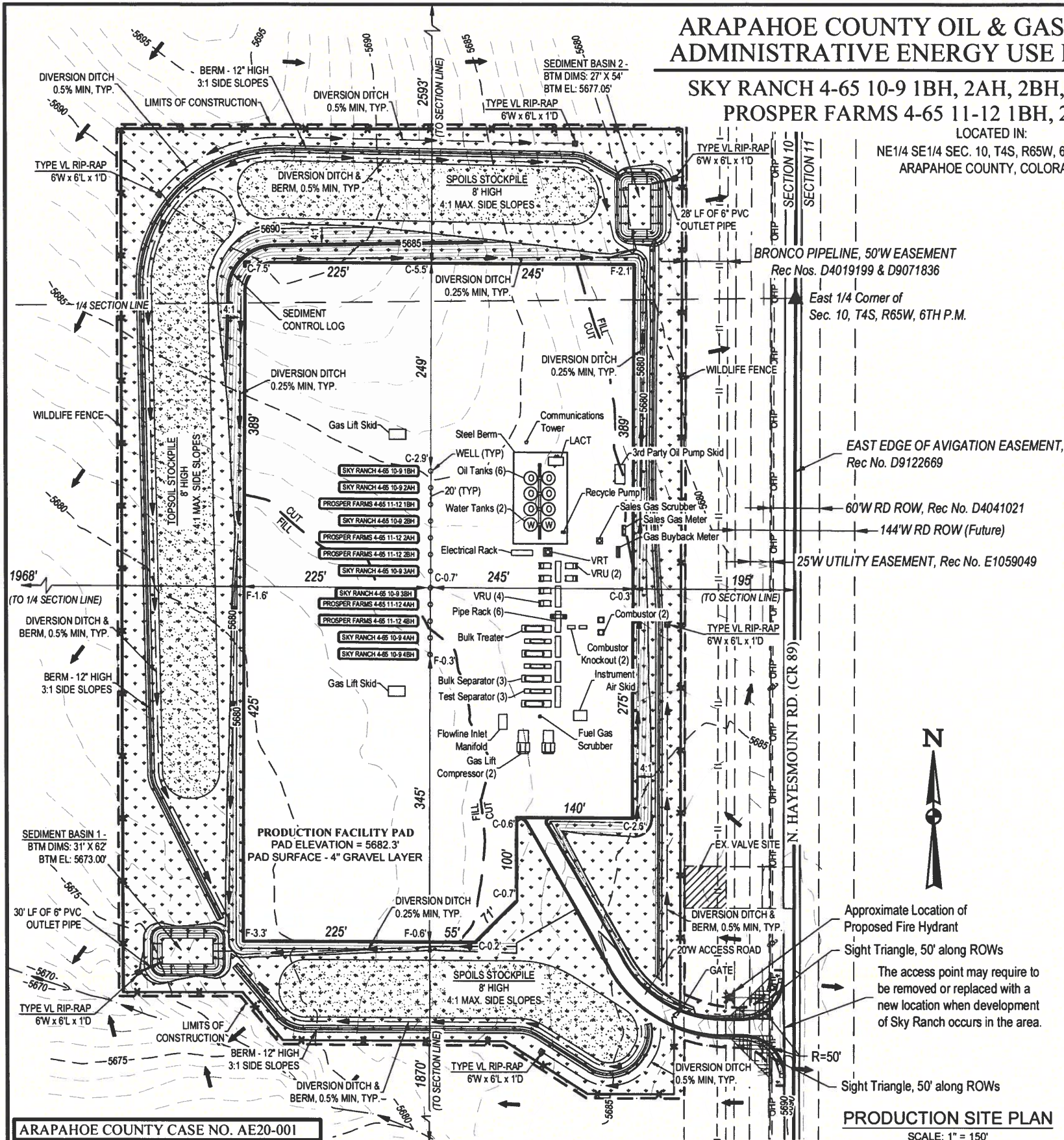
**SHEET
3
OF 6**



ARAPAHOE COUNTY OIL & GAS OPERATIONS PLAN
ADMINISTRATIVE ENERGY USE BY SPECIAL REVIEW

SKY RANCH 4-65 10-9 1BH, 2AH, 2BH, 3AH, 3BH, 4AH, 4BH &
PROSPER FARMS 4-65 11-12 1BH, 2AH, 2BH, 4AH, 4BH

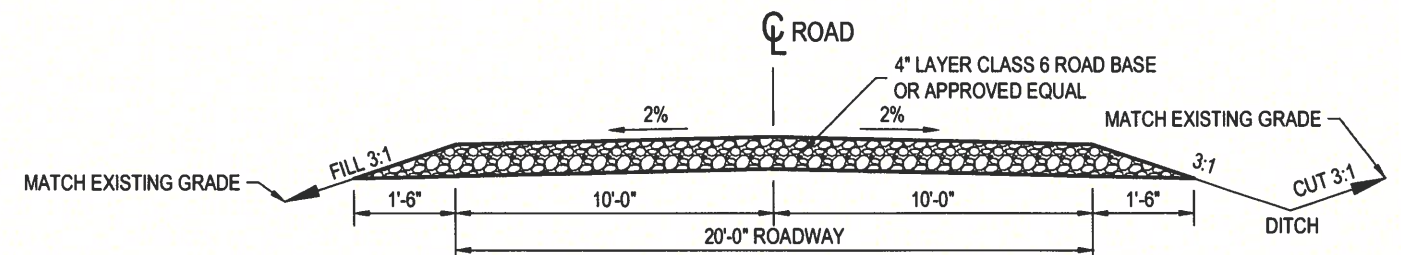
LOCATED IN:
NE1/4 SE1/4 SEC. 10, T4S, R65W, 6TH P.M.
ARAPAHOE COUNTY, COLORADO



Production Equipment
Representative Dimension Table

Equipment	Quantity	Length (ft/in)	Width (ft/in)	Height (ft/in)
Flowline Inlet Manifold	1	25	4	8
Bulk Separator	3	35	8	18
Bulk Treater	1	35	8	18
Test Separator	3	32	5	18
Gas Buyback Meter	1	15	7	9
Gas Lift Compressor	2	39	29	21
Combustor Knockout	2	13	4	10
Combustor	2	8	8	35
Instrument Air Skid	1	22	10	12
Electrical Rack	1	25	4	6
VRU	6	15	7	8
VRT	1	4	4	37
500 bbl Low-Profile Oil Tank	6	16	16	16
500 bbl Low-Profile Water Tank	2	16	16	16
Recycle Pump	1	3	2	5
LACT	1	18	11	11
Sales Gas Meter	1	15	7	9
Sales Gas Scrubber	1	4	4	10
Gas Lift Skid	2	16	7	9
Pipe Rack	6	25	7	6
3rd Party Oil Pump Skid	1	23	10	11
Fuel Gas Scrubber	1	7	7	10
Communications Tower	1	4	4	35

NOTE: Dimensions on equipment are subject to change, but will fit within the facility area.



TYPICAL ROADWAY CROSS-SECTION

20' WIDE ACCESS ROAD

LEGEND:

---	EXISTING MAJOR CONTOUR (5')
- - -	EXISTING MINOR CONTOUR (1')
- - -	PROPOSED MAJOR CONTOUR (5')
- - -	PROPOSED MINOR CONTOUR (1')
---	LIMITS OF CONSTRUCTION
---	PAD BOUNDARY
---	DRAINAGE OR DIVERSION DITCH
---	EXISTING BURIED PIPELINE
---	PROPOSED BURIED PIPELINE
---	SIGHT TRIANGLES
---	SEEDING & MULCHING
---	EXISTING WATER LINE
---	HYDRANT

NOTE:

1. PRODUCTION SITE PLAN LAYOUT IS FOR GRAPHICAL PURPOSES ONLY. ACTUAL SITE PLAN MAY VARY, INCLUDING ACCESS POINTS. COUNTY ENGINEER REVIEW IS REQUIRED PRIOR TO CHANGING ACCESS POINTS.
2. PERMANENT PRODUCTION SURFACE EQUIPMENT WILL BE PAINTED EARTH TONES AS REQUIRED BY COGCC.
3. SITE WILL BE GRADED BACK TO ORIGINAL ELEVATION AT FINAL RECLAMATION.
4. REFER TO GESC PLAN FOR SEEDING SPECIFICATIONS.

CRESTONE PEAK RESOURCES OPERATING, LLC
SKY RANCH 4-65 10-9 1BH, 2AH, 2BH, 3AH, 3BH, 4AH, 4BH &
PROSPER FARMS 4-65 11-12 1BH, 2AH, 2BH, 4AH, 4BH
NE1/4 SE1/4 SEC. 10, T4S, R65W, 6TH P.M.
ARAPAHOE COUNTY, COLORADO
OIL & GAS OPERATIONS PLAN

REV	DATE	BY	REVISIONS
2	01-10-2020	P.H.	MAKE REVISIONS PER REVIEW
3	07-15-2020	C.J.C.	REVISE WELL LAYOUT AND PRODUCTION FACILITY
4	02-02-2021	C.D.C.	1st REVIEW COMMENTS
5	04-05-2021	C.D.C.	ADD FIRE HYDRANT & 2nd REVIEW COMMENTS
6	04-30-2021	C.D.C.	3rd REVIEW COMMENTS
7	06-01-2021	C.D.C.	FINAL SUBMITTAL

SCALE: AS NOTED
DRAWN BY: C.D.C.
DATE DRAWN: 10-16-2019
UELS FILE NO.: C-7232
PROJ. NO: CRE03-20-0031 WDI



CIVIL & STRUCTURAL ENGINEERING
AND LAND SURVEYING SERVICES

85 South 200 East, Vernal, UT 84078
O: 435.789.1017
www.uintahgroup.com

- SINCE 1964 -

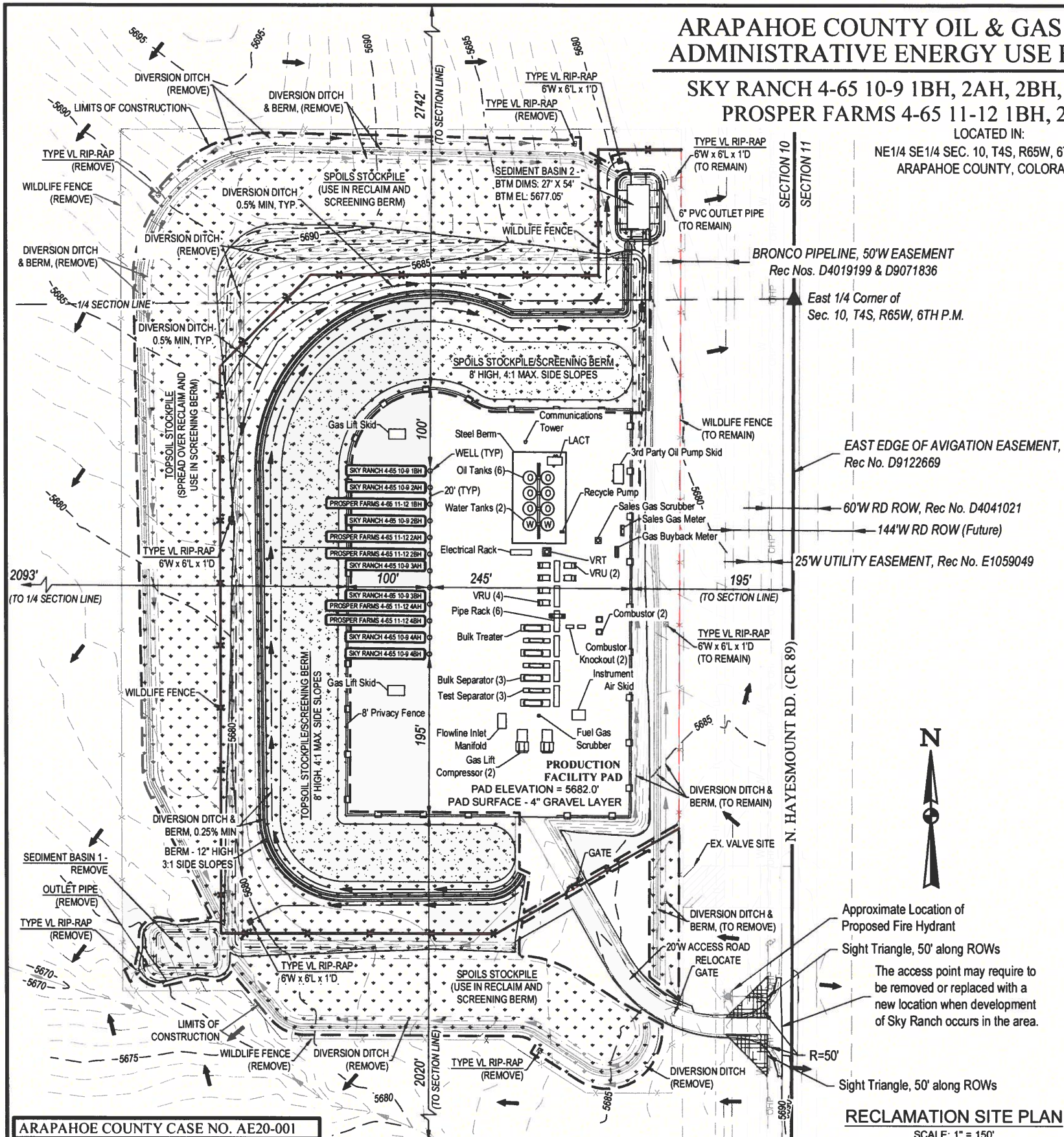
PRODUCTION
PLAN

SHEET
4
OF 6

ARAPAHOE COUNTY OIL & GAS OPERATIONS PLAN
ADMINISTRATIVE ENERGY USE BY SPECIAL REVIEW

SKY RANCH 4-65 10-9 1BH, 2AH, 2BH, 3AH, 3BH, 4AH, 4BH &
PROSPER FARMS 4-65 11-12 1BH, 2AH, 2BH, 4AH, 4BH

LOCATED IN:
NE1/4 SE1/4 SEC. 10, T4S, R65W, 6TH P.M.
ARAPAHOE COUNTY, COLORADO

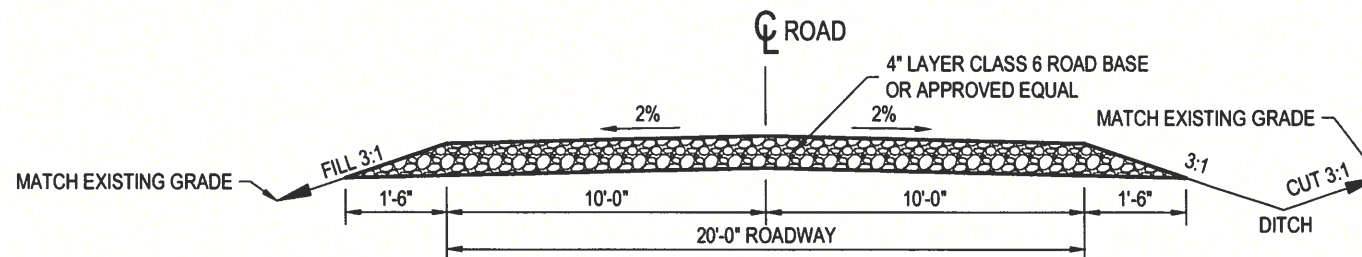


RECLAMATION SITE PLAN
SCALE: 1" = 150'

Production Equipment
Representative Dimension Table

Equipment	Quantity	Length (ft/in)	Width (ft/in)	Height (ft/in)
Flowline Inlet Manifold	1	25	4	8
Bulk Separator	3	35	8	18
Bulk Treater	1	35	8	18
Test Separator	3	32	5	18
Gas Buyback Meter	1	15	7	9
Gas Lift Compressor	2	39	29	21
Combustor Knockout	2	13	4	10
Combustor	2	8	8	35
Instrument Air Skid	1	22	10	12
Electrical Rack	1	25	4	6
VRU	6	15	7	8
VRT	1	4	4	37
500 bbl Low-Profile Oil Tank	6	16	16	16
500 bbl Low-Profile Water Tank	2	16	16	16
Recycle Pump	1	3	2	5
LACT	1	18	11	11
Sales Gas Meter	1	15	7	9
Sales Gas Scrubber	1	4	4	10
Gas Lift Skid	2	16	7	9
Pipe Rack	6	25	7	6
3rd Party Oil Pump Skid	1	23	10	11
Fuel Gas Scrubber	1	7	7	10
Communications Tower	1	4	4	35

NOTE: Dimensions on equipment are subject to change, but will fit within the facility area.



TYPICAL ROADWAY CROSS-SECTION

20' WIDE ACCESS ROAD

LEGEND:

---	EXISTING MAJOR CONTOUR (5')
- - - -	EXISTING MINOR CONTOUR (1')
---	PROPOSED MAJOR CONTOUR (5')
- - - -	PROPOSED MINOR CONTOUR (1')
---	LIMITS OF CONSTRUCTION
---	PAD BOUNDARY
---	DRAINAGE OR DIVERSION DITCH
---	EXISTING BURIED PIPELINE
---	PROPOSED BURIED PIPELINE
---	SIGHT TRIANGLES
---	AREA OF PERMANENT DISTURBANCE
---	8' PRIVACY FENCE
---	SEEDING & MULCHING
---	EXISTING WATER LINE
---	HYDRANT

NOTE:

1. PRODUCTION SITE PLAN LAYOUT IS FOR GRAPHICAL PURPOSES ONLY. ACTUAL SITE PLAN MAY VARY, INCLUDING ACCESS POINTS. COUNTY ENGINEER REVIEW IS REQUIRED PRIOR TO CHANGING ACCESS POINTS.
2. PERMANENT PRODUCTION SURFACE EQUIPMENT WILL BE PAINTED EARTH TONES AS REQUIRED BY COGCC.
3. SITE WILL BE GRADED BACK TO ORIGINAL ELEVATION AT FINAL RECLAMATION.
4. REFER TO GESC PLAN FOR SEEDING SPECIFICATIONS.

CRESTONE PEAK RESOURCES OPERATING, LLC
SKY RANCH 4-65 10-9 1BH, 2AH, 2BH, 3AH, 3BH, 4AH, 4BH &
PROSPER FARMS 4-65 11-12 1BH, 2AH, 2BH, 4AH, 4BH
NE1/4 SE1/4 SEC. 10, T4S, R65W, 6TH P.M.
ARAPAHOE COUNTY, COLORADO
OIL & GAS OPERATIONS PLAN

REV	DATE	BY	REVISIONS
2	01-10-2020	P.H.	MAKE REVISIONS PER REVIEW
3	07-15-2020	C.J.C.	REVISE WELL LAYOUT AND PRODUCTION FACILITY
4	02-02-2021	C.D.C.	1st REVIEW COMMENTS
5	04-05-2021	C.D.C.	ADD FIRE HYDRANT & 2nd REVIEW COMMENTS
6	04-30-2021	C.D.C.	3rd REVIEW COMMENTS
7	06-01-2021	C.D.C.	FINAL SUBMITTAL

SCALE: AS NOTED
DRAWN BY: C.D.C.
DATE DRAWN: 10-16-2019
UELS FILE NO.: C-7232
PROJ. NO: CRE03-20-0031 WD1



CIVIL & STRUCTURAL ENGINEERING
AND LAND SURVEYING SERVICES

85 South 200 East, Vernal, UT 84078
O: 435.789.1017
www.uintahgroup.com

- SINCE 1964 -

RECLAMATION
PLAN
5
OF 6

ARAPAHOE COUNTY OIL & GAS OPERATIONS PLAN
ADMINISTRATIVE ENERGY USE BY SPECIAL REVIEW

SKY RANCH 4-65 10-9 1BH, 2AH, 2BH, 3AH, 3BH, 4AH, 4BH &
PROSPER FARMS 4-65 11-12 1BH, 2AH, 2BH, 4AH, 4BH

LOCATED IN:
NE1/4 SE1/4 SEC. 10, T4S, R65W, 6TH P.M.
ARAPAHOE COUNTY, COLORADO

GENERAL NOTES:

1. THE SITE PLAN, EQUIPMENT AND INFORMATION SHOWN HEREIN ARE FOR REFERENCE ONLY AND ARE NOT INTENDED TO BE USED FOR CONSTRUCTION. ENGINEERED USE BY SPECIAL REVIEW DRAWINGS RELATIVE TO THIS SITE WILL BE SUBMITTED AND APPROVED FOLLOWING ALL APPLICABLE ARAPAHOE COUNTY STANDARDS AND PROCEDURES.
2. THE DIMENSIONS AND LAYOUT DEPICTED IN THE SITE PLAN SHOWN ARE REPRESENTATIVE OF A TYPICAL WELL SITE. ACTUAL DIMENSIONS AND LAYOUT MAY CHANGE BASED ON THE VARIABILITY OF THE EQUIPMENT.
3. THE PROPOSED DRILL SITE WILL BE APPROXIMATELY 17.4 ACRES IN SIZE AND CONSTRUCTION OF THIS SITE WILL INCLUDE LEVELING THE PAD TO ACCOMMODATE THE DRILLING RIG. ONCE THE PAD IS COMPLETED, DRILLING RIG EQUIPMENT WILL BE BROUGHT ONTO LOCATION AND RIGGED UP. DRILLING OPERATIONS, WHICH RUN 24 HOURS A DAY UNTIL COMPLETED, WILL COMMENCE AFTER THE RIG IS "RIGGED UP". THE SURFACE HOLE WILL BE DRILLED TO APPROXIMATELY 2000 FEET USING FRESH WATER. SURFACE CASING WILL THEN BE RUN AND CEMENTED TO SURFACE TO PROTECT ANY SHALLOW FRESH WATER ZONES. SURFACE CASING SETTING DEPTH IS DETERMINED FROM SUBSURFACE GROUND WATER MAPS PREPARED BY THE STATE ENGINEER AND SUPPLEMENTED BY THE LATEST DATA AVAILABLE FROM OFFSETTING WELLS.
4. CRESTONE PEAK RESOURCES OPERATING, LLC'S DRILLING RIGS ARE EQUIPPED WITH A CLOSED LOOP SYSTEM, THEREFORE, WATER USED FOR DRILLING IS RECYCLED AND RE-USED, AND RESERVE PITS WILL NOT BE CONSTRUCTED. THE DRILLING RIG WILL BE ON LOCATION FOR APPROXIMATELY 6-12 DAYS PER HORIZONTAL WELL. AT THE END OF THE DRILLING PHASE, THE DRILLING RIG WILL BE MOVED OFF LOCATION.
5. THE COMPLETION PHASE BEGINS WHEN THE DRILLING EQUIPMENT IS TRANSPORTED OFF THE LOCATION. COMPLETION OPERATIONS ARE CONDUCTED 24 HOURS PER DAY INTERMITTENTLY OVER A PERIOD OF SEVERAL WEEKS. THE SITE MAY BE BLADED AND LEVELED TO ACCOMMODATE THE COMPLETION RIG AND ANCHORS MAY BE SET FOR THE COMPLETION RIG. ADDITIONAL OPERATIONS INCLUDING CEMENTING, DRILLING AND LOGGING MAY OCCUR AS CIRCUMSTANCES REQUIRE. FOR HORIZONTAL WELLS, MULTIPLE FRACTURE STAGES ARE INDUCED ALONG THE LENGTH OF THE WELLBORE IN THE RESPECTIVE FORMATION INTO WHICH THE WELL HAS BEEN DRILLED.
6. THE PRODUCTION EQUIPMENT FOR THE SKY RANCH 4-65 10-9 1BH, 2AH, 2BH, 3AH, 3BH, 4AH, 4BH & PROSPER FARMS 4-65 11-12 1BH, 2AH, 2BH, 4AH, 4BH WILL BE LOCATED ADJACENT TO THE WELLS. THE EQUIPMENT ON THE SKY RANCH 4-65 10-9 1BH, 2AH, 2BH, 3AH, 3BH, 4AH, 4BH & PROSPER FARMS 4-65 11-12 1BH, 2AH, 2BH, 4AH, 4BH PAD WILL CONSIST OF: OIL TANKS, WATER TANKS, SEPARATORS, TREATERS, VRTS, VRUS, COMPRESSORS, COMBUSTORS, AND PROPOSED ELECTRICAL AND/OR SOLAR EQUIPMENT. ALL QUANTITIES FOR THESE ITEMS CAN BE FOUND ON THE PRODUCTION EQUIPMENT TABLE ON PAGE 4. TANKS AND FACILITIES SHALL BE PAINTED PER COGCC RULES. THE STEEL BERMS AROUND THE TANKS WILL HOLD 150% OF THE CAPACITY OF THE LARGEST TANK WITHIN THE BERM AND WILL BE PAINTED TO MATCH THE TANKS AND OTHER EQUIPMENT. THE STEEL BERMS AROUND THE TANKS WILL BE INSPECTED WEEKLY AND FOLLOWING A PRECIPITATION EVENT.
7. AT THE TIME THE WELLS BECOME SUB-ECONOMIC TO OPERATE, THE OPERATOR OR ITS SUCCESSORS WILL ENGAGE THE SERVICES OF A PLUGGING RIG TO REMOVE PRODUCTION EQUIPMENT FROM THE WELLBORES AND PLUG THE PRODUCTIVE ZONES WITH A COMBINATION OF BRIDGE PLUGS AND CEMENT PLUGS IN ACCORDANCE WITH RULE 319.A OF THE RULES AND REGULATIONS PROMULGATED BY THE COGCC. IF THE SEPARATORS AND TANKS ON THE SURFACE OF THE LAND ARE NO LONGER NEEDED FOR OTHER WELLS, THEY WILL BE REMOVED. SURFACE RESTORATION WILL INVOLVE REMOVAL OF ANY ABOVE-GROUND CASING AND THE INSTALLATION OF REGULATION MARKERS THAT WILL NOT INTERFERE WITH SUBSEQUENT SURFACE USE.

WATER SOURCE NOTE:

1. AN MLV TANK WILL BE USED TO STORE NON-POTABLE WATER FOR DRILLING USE.

APPLICABLE COGCC STANDARDS:

THE FOLLOWING COGCC STANDARDS ARE FOR REFERENCE AND ARE NOT INCLUSIVE OF ALL STATE RULES RELATIVE TO OIL AND GAS OPERATIONS. THESE RULES HAVE BEEN ABBREVIATED FROM THEIR ORIGINAL FORMAT TO DENOTE COMPLIANCE WITH THE COGCC. ALL WORK SHALL BE IN COMPLIANCE WITH APPLICABLE COGCC REGULATIONS.

423. NOISE ABATEMENT (MODIFIED)

- a. OIL AND GAS OPERATIONS AT ANY WELL SITE, PRODUCTION FACILITY, OR GAS FACILITY SHALL COMPLY WITH THE FOLLOWING MAXIMUM PERMISSIBLE NOISE LEVELS:


	7AM TO 7PM	7PM TO NEXT 7 AM
ALL FACILITIES	65 db(A)	60 db(A)
ALL FACILITIES	65 db(C)	65 db(C)

- b. THE APPLICANT SHALL PROVIDE A NOISE MITIGATION PLAN.

424. LIGHTING (MODIFIED)

ALL SITE LIGHTING SHALL MEET COGCC LIGHTING STANDARDS.

SIGNAGE:




CRESTONE PEAK
RESOURCES
303-659-7740

DANGER
NO TRESPASSING
AUTHORIZED PERSONNEL ONLY

SKY RANCH 4-65 10-9 1BH
NE1/4 SE1/4 SEC. 10 T4S - R65W 6TH P.M.
39.717993 / -104.642448
ARAPAHOE COUNTY, COLORADO

ENTRY SIGN TO BE PLACED AT WELL ACCESS
ROAD INTERSECTION WITH PUBLIC ROAD
SIZE: 1.5' X 2'




CRESTONE PEAK
RESOURCES
303-659-7740

DANGER
NO TRESPASSING
AUTHORIZED PERSONNEL ONLY

SKY RANCH 4-65 10-9 1BH
NE1/4 SE1/4 SEC. 10 T4S - R65W 6TH P.M.
39.717993 / -104.642448
ARAPAHOE COUNTY, COLORADO

ENTRY SIGN TO BE PLACED AT WELL HEAD
SIZE: 2' X 3'




CRESTONE PEAK
RESOURCES

**SKY RANCH 4-65 10-9 &
PROSPER FARMS 4-65 11-12**
NE1/4 SE1/4 SEC. 10 T4S - R65W 6TH P.M.
LAT. / LONG:
39.717993 / -104.642448
ARAPAHOE COUNTY, COLORADO
E. 6TH AVE & N. HAYESMOUNT RD (CR 89)
0.7 MILES WEST INTO BATTERY.

DANGER
NO TRESPASSING
AUTHORIZED PERSONNEL ONLY

REQUIRED:
PERSONAL PROTECTIVE
EQUIPMENT (PPE)
FIRE RETARDENT
CLOTHING
FRC



PLEASE OBEY POSTED SPEED LIMITS

IN EMERGENCY CONTACT
911
303-659-7740 (CRESTONE)

ENTRY SIGN TO BE PLACED AT TANK BATTERY
SIZE: 3' X 3'

ARAPAHOE COUNTY CASE NO. AE20-001

CRESTONE PEAK RESOURCES OPERATING, LLC
**SKY RANCH 4-65 10-9 1BH, 2AH, 2BH, 3AH, 3BH, 4AH, 4BH &
PROSPER FARMS 4-65 11-12 1BH, 2AH, 2BH, 4AH, 4BH**
NE1/4 SE1/4 SEC. 10, T4S, R65W, 6TH P.M.
ARAPAHOE COUNTY, COLORADO
OIL & GAS OPERATIONS PLAN

REV	DATE	BY	REVISIONS
2	01-10-2020	P.H.	MAKE REVISIONS PER REVIEW
3	07-15-2020	C.J.C.	REVISE WELL LAYOUT AND PRODUCTION FACILITY
4	02-02-2021	C.D.C.	1st REVIEW COMMENTS
5	04-05-2021	C.D.C.	ADD FIRE HYDRANT & 2nd REVIEW COMMENTS
6	04-30-2021	C.D.C.	3rd REVIEW COMMENTS
7	06-01-2021	C.D.C.	FINAL SUBMITTAL

SCALE: NO SCALE
DRAWN BY: C.D.C.
DATE DRAWN: 10-16-2019
UELS FILE NO.: C-7232
PROJ. NO: CRE03-20-0031 WD1



CIVIL & STRUCTURAL ENGINEERING
AND LAND SURVEYING SERVICES

85 South 200 East, Vernal, UT 84078
O: 435.789.1017
www.uintahgroup.com

- SINCE 1964 -

GENERAL
NOTES &
SIGNAGE
DETAILS

SHEET
6
OF 6