

NOTES:

- Rounded corners shown at 35' radius.
- Contours shown at 2' intervals.
- Cut/Fill slopes 4:1 (Typ. except where noted).
- Overall working pad surface = 814' x 470'

**CRESTONE PEAK
RESOURCES OPERATING, LLC**

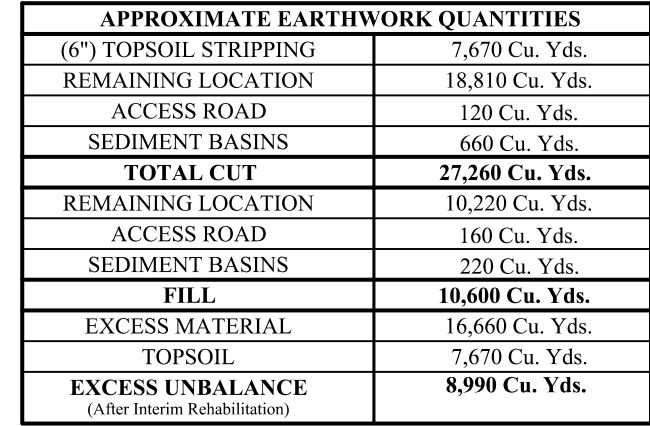
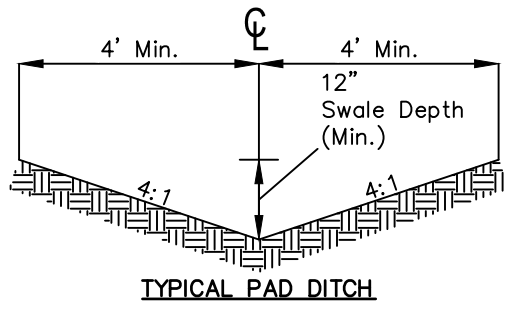
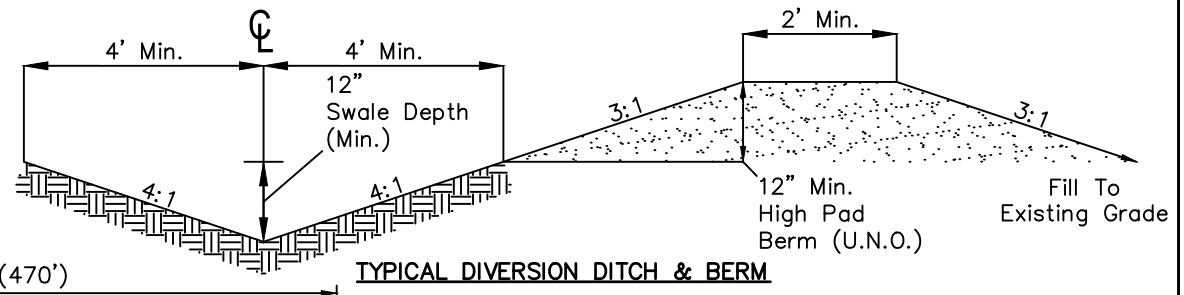
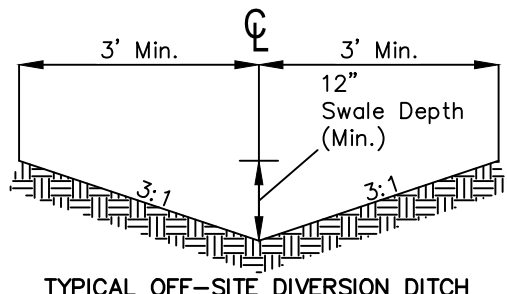
**SKY RANCH 4-65 10-9 1BH, 2AH, 2BH, 3AH, 3BH, 4AH, 4BH
& PROSPER FARMS 4-65 11-12 1BH, 2AH, 2BH, 4AH, 4BH
NE 1/4 SE 1/4, SECTION 10, T4S, R65W, 6th P.M.
ARAPAHOE COUNTY, COLORADO**

SURVEYED BY	GREG WEIMER, O.R.	12-17-20	SCALE
DRAWN BY	J.U.	04-23-19	1" = 100'

CONSTRUCTION LAYOUT - PLAN VIEW

UELS, LLC
Corporate Office * 85 South 200 East
Vernal, UT 84078 * (435) 789-1017

UINTEAH
ENGINEERING & LAND SURVEYING



APPROXIMATE WELL SITE DISTURBANCE AREAS	
	ACRES
WORKING PAD SURFACE DISTURBANCE	±8.266
CONSTRUCTION DISTURBANCE	±9.114
TOTAL OIL & GAS LOCATION	±17.380

APPROXIMATE SURFACE DISTURBANCE AREAS		
	DISTANCE	ACRES
TOTAL OIL & GAS LOCATION	NA	±17.380
ACCESS ROAD DISTURBANCE	±466'	±0.182
TOTAL SURFACE USE AREA		±17.562

REV: 4 07-26-21 C.C. (COGCC UPDATES)

**CRESTONE PEAK
RESOURCES OPERATING, LLC**

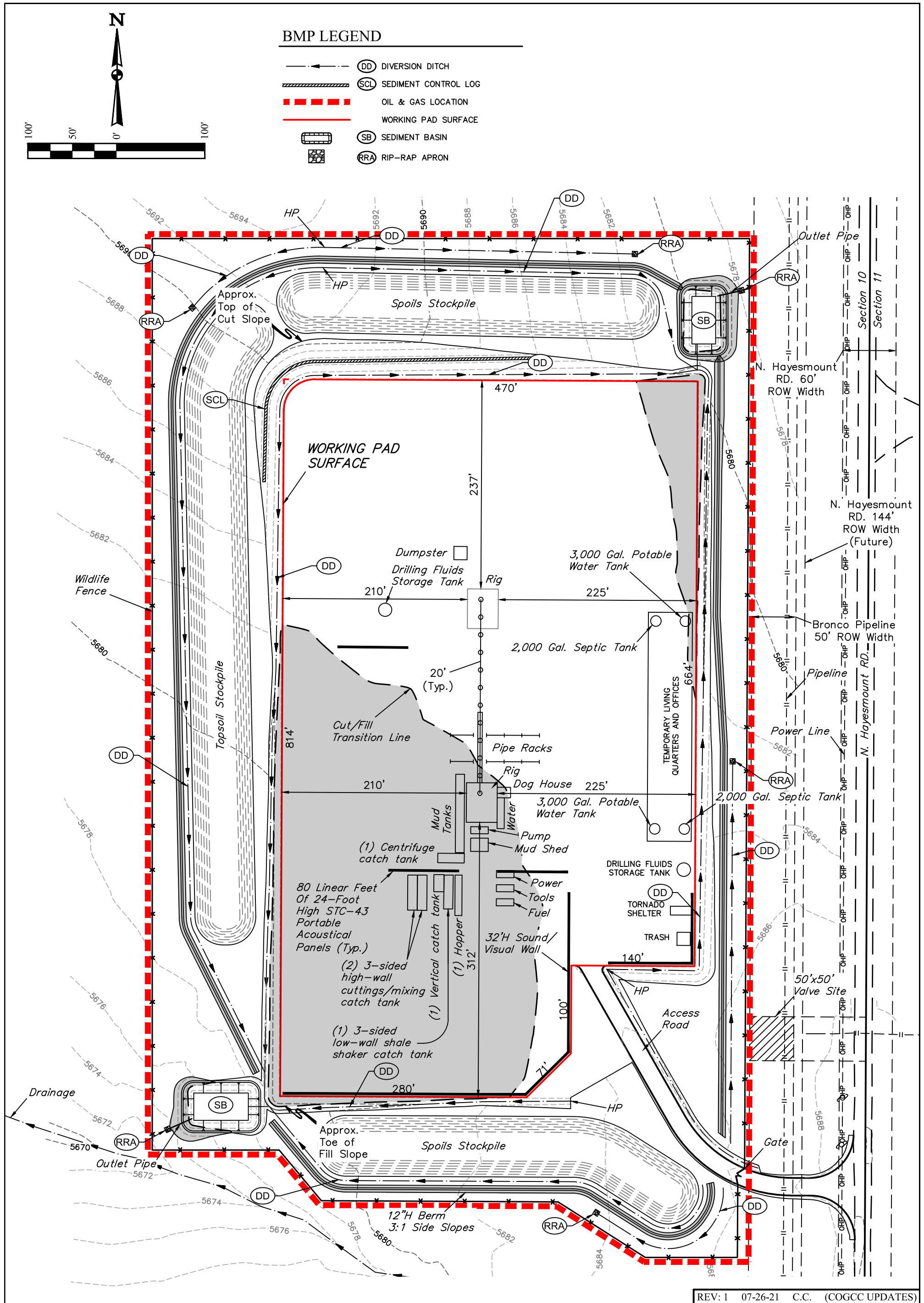
**SKY RANCH 4-65 10-9 1BH, 2AH, 2BH, 3AH, 3BH, 4AH, 4BH
& PROSPER FARMS 4-65 11-12 1BH, 2AH, 2BH, 4AH, 4BH
NE 1/4 SE 1/4, SECTION 10, T4S, R65W, 6th P.M.
ARAPAHOE COUNTY, COLORADO**

SURVEYED BY	GREG WEIMER, O.R.	12-17-20	SCALE
DRAWN BY	J.U.	04-23-19	AS SHOWN

CONSTRUCTION LAYOUT - CROSS SECTIONS



UELS, LLC
Corporate Office * 85 South 200 East
Vernal, UT 84078 * (435) 789-1017



REV: 1	07-26-21	C.C.	(COGCC UPDATES)
--------	----------	------	-----------------

NOTES:

- NOTES:**
- Overall working pad surface = 814' x 470'

**CRESTONE PEAK
RESOURCES OPERATING, LLC**

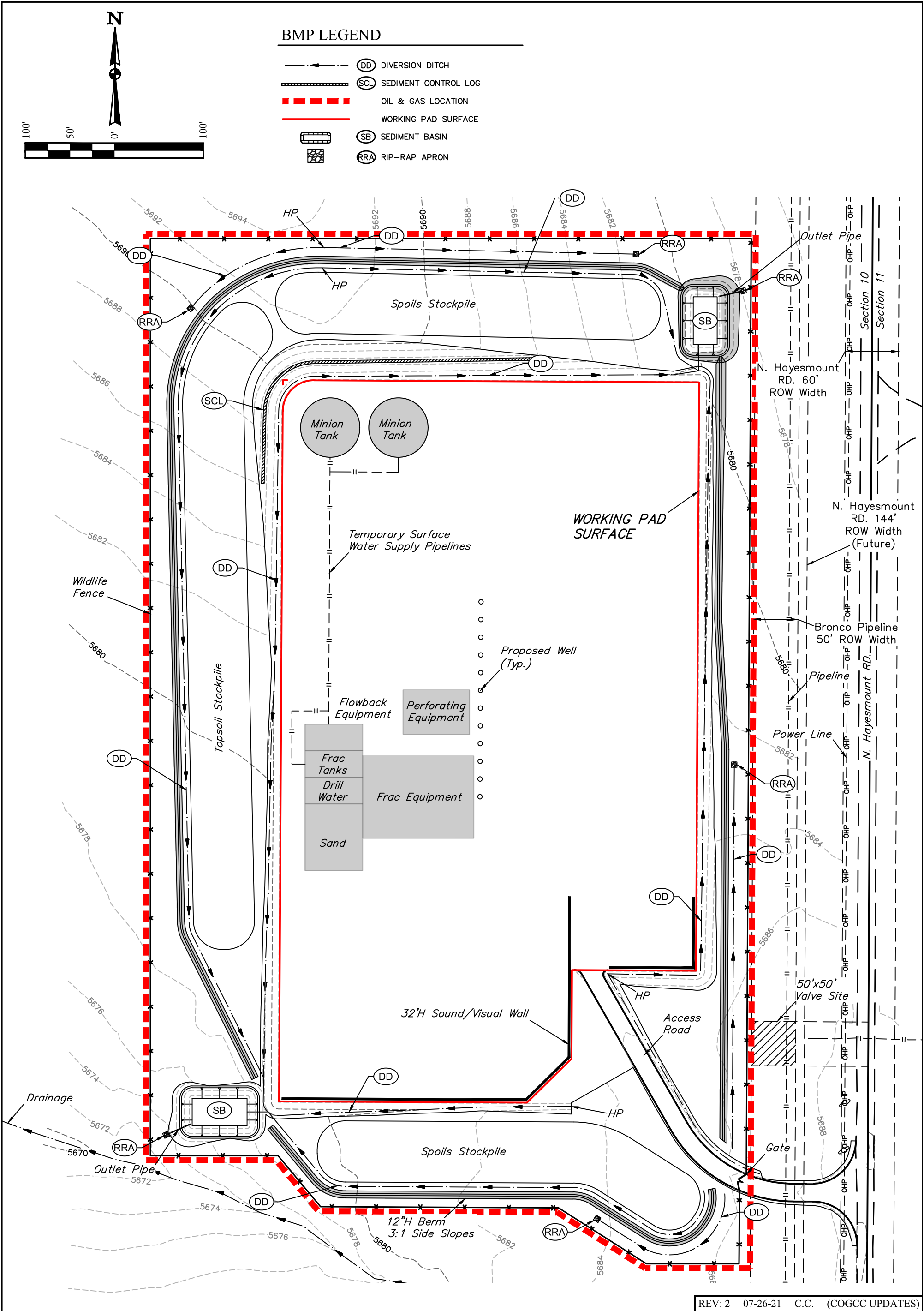
**SKY RANCH 4-65 10-9 1BH, 2AH, 2BH, 3AH, 3BH, 4AH, 4BH
& PROSPER FARMS 4-65 11-12 1BH, 2AH, 2BH, 4AH, 4BH
NE 1/4 SE 1/4, SECTION 10, T4S, R65W, 6th P.M.
ARAPAHOE COUNTY, COLORADO**

SURVEYED BY	GREG WEIMER, O.R.	12-17-20	SCALE
DRAWN BY	C.IVIE	12-31-20	1" = 100'

PRELIMINARY DRILL RIG LAYOUT



UELS, LLC
Corporate Office * 85 South 200 East
Vernal, UT 84078 * (435) 789-1017



REV: 2 07-26-21 C.C. (COGCC UPDATES)

NOTES:
• Contours shown at 2' intervals.

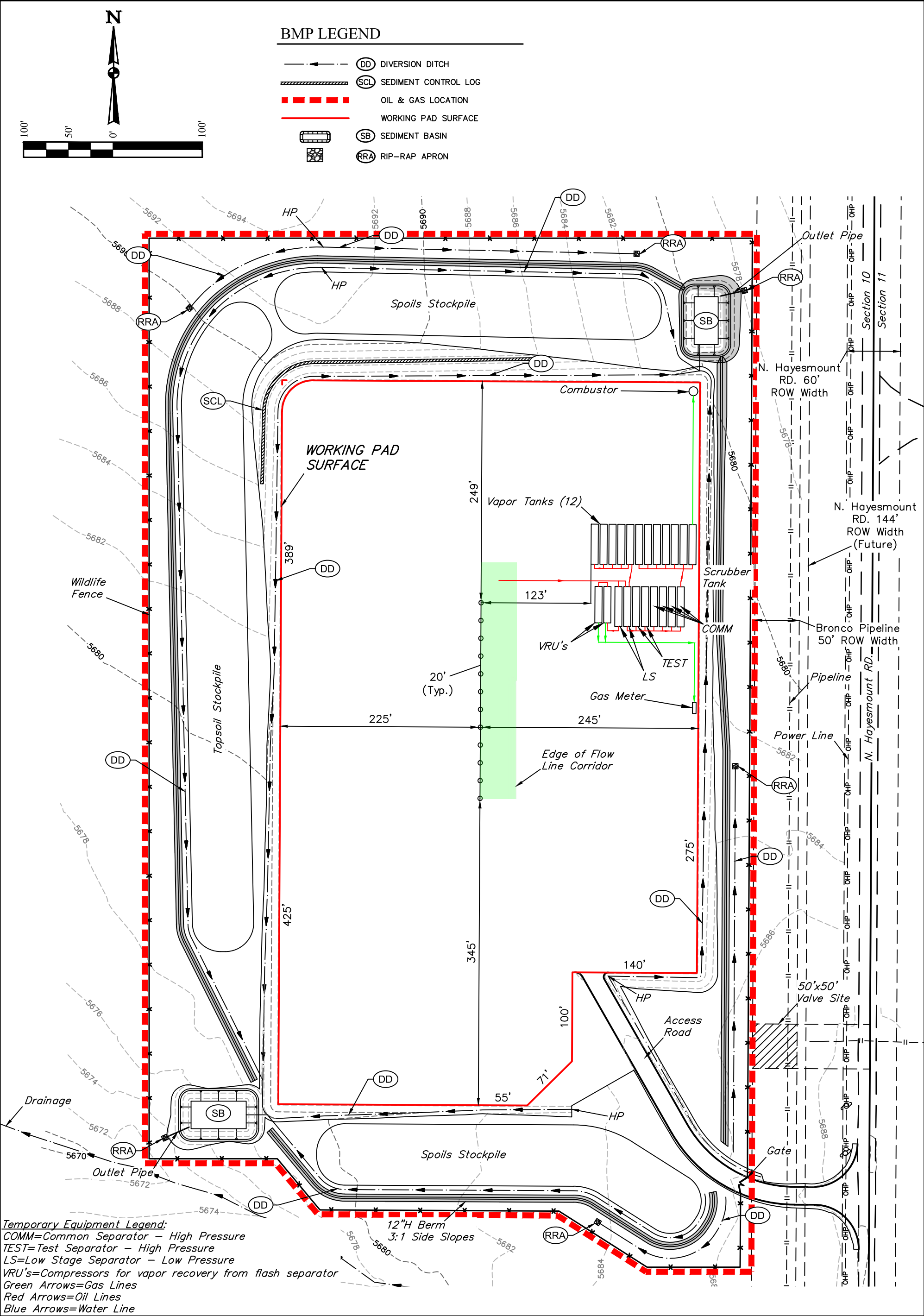
**CRESTONE PEAK
RESOURCES OPERATING, LLC**

SKY RANCH 4-65 10-9 1BH, 2AH, 2BH, 3AH, 3BH, 4AH, 4BH
& PROSPER FARMS 4-65 11-12 1BH, 2AH, 2BH, 4AH, 4BH
NE 1/4 SE 1/4, SECTION 10, T4S, R65W, 6th P.M.
ARAPAHOE COUNTY, COLORADO

SURVEYED BY	GREG WEIMER, O.R.	12-17-20	SCALE
DRAWN BY	J.J.	07-07-21	1" = 100'
PRELIMINARY WELL COMPLETION & STIMULATION LAYOUT			



UELS, LLC
Corporate Office * 85 South 200 East
Vernal, UT 84078 * (435) 789-1017



**CRESTONE PEAK
RESOURCES OPERATING, LLC**

SKY RANCH 4-65 10-9 1BH, 2AH, 2BH, 3AH, 3BH, 4AH, 4BH
& PROSPER FARMS 4-65 11-12 1BH, 2AH, 2BH, 4AH, 4BH
NE 1/4 SE 1/4, SECTION 10, T4S, R65W, 6th P.M.
ARAPAHOE COUNTY, COLORADO

SURVEYED BY	GREG WEIMER, O.R.	12-17-20	SCALE
DRAWN BY	C.C.	07-26-21	1" = 100'
PRELIMINARY FLOWBACK EQUIPMENT LAYOUT			



UELS, LLC
Corporate Office * 85 South 200 East
Vernal, UT 84078 * (435) 789-1017

