



Frederick Land Surveying, Inc.

6853 North Franklin Avenue

Loveland, Colorado 80538

WELL LOCATION CERTIFICATE

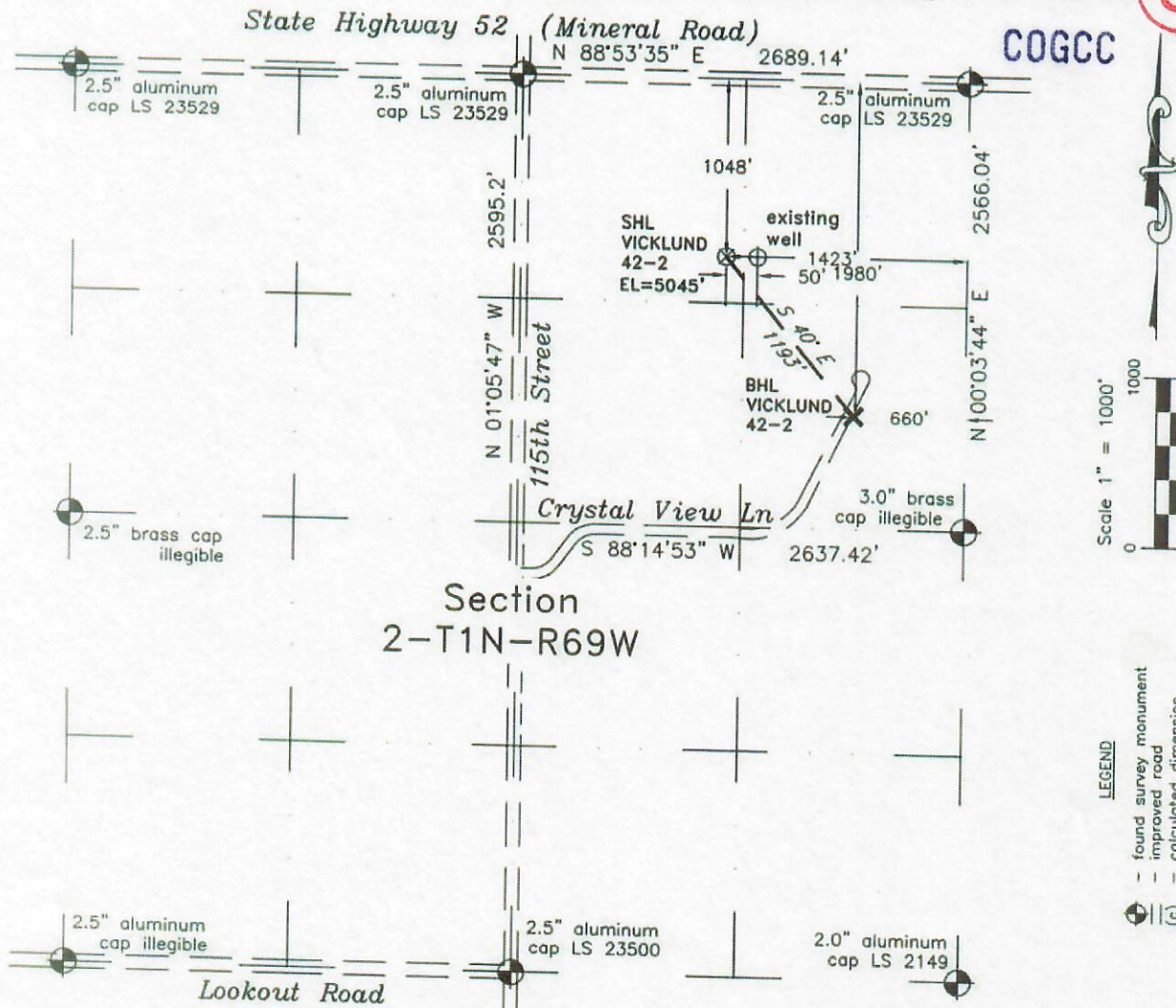
THIS MAP DOES NOT REPRESENT A BOUNDARY SURVEY

RECEIVED

MAY-9 07



COGCC



LEGEND
 found survey monument
 improved road
 calculated dimension

Section
2-T1N-R69W

In accordance with a request from Peter Scott of EnCana Oil & Gas (USA) Inc., Frederick Land Surveying, Inc. has determined the location of the VICKLUND 42-2 well site to be SHL 1048' FNL & 1423' FEL, (BHL 1980' FNL & 660' FEL), as measured at ninety (90) degrees from the section lines of Section 2, Township 1 North, Range 69 West of the 6th Principal Meridian, Boulder County, Colorado.

Proposed Surface Hole Data:
 Latitude: N 40.08457° (BHL 40.08204°)
 Longitude: W 105.07947° (105.07676°)
 Nearest Building, Public Road,
 Above Ground Utility, or Railroad: 440'
 Nearest Property Line: 160'
 RDOP=0.161

Notes:

- 1) Bearings based upon NAD 83 Colorado North State Plane Coordinates using GPS observations taken on 03/21/2007 by GPS operator Tom Winans.
- 2) Elevations based upon GPS observed heights with Geoid 2003 corrections.
- 3) There are no improvements other than an existing well head within 200'.
- 4) The location falls in an agricultural field.

I hereby certify that this Well Location Certificate was prepared by me or under my direct supervision on 03/27/2007 for and on behalf of EnCana Oil & Gas (USA) Inc. That it is not a Land Survey Plat or an Improvement Survey Plat and that it is not to be relied upon for establishment of fences, buildings, or other future improvement lines.
 Revised: 05/07/07

M. Bryan Short, CO PLS 32444
 Job #: 07033.001

NOTICE: According to Colorado law you MUST commence any legal action based upon any defect in this W.L.C. within three years after you first discover such defect. In no event may any action based upon any defect in this W.L.C. be commenced more than ten years from this said date of the certification shown hereon.

