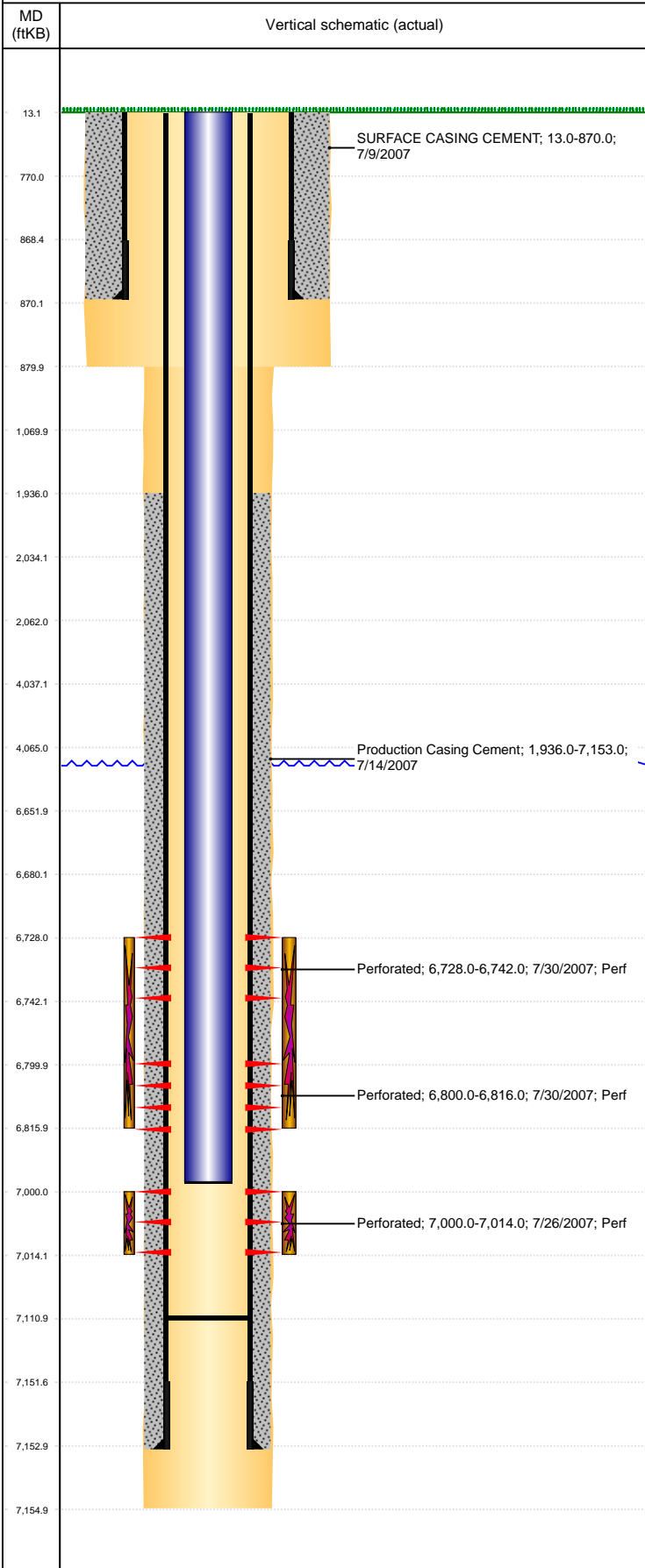


Well Name: JOHNSON C29-29

VERTICAL, ORIGINAL HOLE, 3/16/2022 4:38:37 PM



Well Header					
API	Business Unit		District	Well Config	
05-123-25962	DJ BASIN		15	VERTICAL	
KB - GL / MSL (ft...)	Spud Date	P & A Date	Well Production Status		SoRT
13.00	7/8/2007		TA (AT SURFACE)		No
Comment					

Surface Location (Congressional)								
Qtr 3	Qtr 4	Section	Twnshp	Twnsh...	Range	Rng E...	Actual Latitude (°)	Actual Longitude (°)
NW	NW	29	4	N	64	W	40.29016674	-104.57961650

Wellbore Sections			
Section Des	Size (in)	Act Top, MD (ftKB)	Act Btm, MD (ftKB)
SURFACE	12 1/4	13	880
PRODUCTION	6 1/4	880	7,155

Casing Strings						
Csg Des	Run Date	OD (in)	Wt/Len (lb/ft)	Grade	Top, MD (ftKB)	MD (ftKB)
Surface	7/9/2007	8 5/8	24.00	J-55	13.0	870.0
Production	7/14/2007	4 1/2	11.60	M-80	13.0	7,153.0

Cement			
Des	Start Date	Top (ftKB)	Btm (ftKB)
SURFACE CASING CEMENT	7/9/2007	13.0	870.0
Production Casing Cement	7/14/2007	1,936.0	7,153.0

Zone Statuses					
Zone Name	Status Date	Status	Fluid Type	Job	Prod Method
CODELL	8/24/2007	PR	Oil	DRILLING/COMPLETION - ORIGINAL, 7/8/2007...	
CODELL	12/4/2007	PR	Oil	COMMINGLE ZONES, 11/29/2007 00:00	
NIOBRARA	8/24/2007	PR	Oil	DRILLING/COMPLETION - ORIGINAL, 7/8/2007...	
NIOBRARA	12/4/2007	PR	Oil	COMMINGLE ZONES, 11/29/2007 00:00	

Perforation Data					
Linked Zone	Bnch/Stg	Entered Shot Total	Top (ftKB)	Btm (ftKB)	Date
NIOBRARA, ORIGINAL HOLE	A	56	6,728.00	6,742.00	7/30/2007
NIOBRARA, ORIGINAL HOLE	B	64	6,800.00	6,816.00	7/30/2007
CODELL, ORIGINAL HOLE		56	7,000.00	7,014.00	7/26/2007

Stimulation Intervals			
Zone	Start Date	Top (ftKB)	Btm (ftKB)
NIOBRARA, ORIGINAL HOLE	7/30/2007	6,728.0	6,816.0
CODELL, ORIGINAL HOLE	7/30/2007	7,000.0	7,014.0

Other In Hole					
Run Date	Des	Make	OD (in)	Top (ftKB)	Btm (ftKB)

Logs			
Date	Type	Top, MD (ftKB)	Btm, MD (ftKB)
7/13/2007	COMPENSATED DENSITY	2,690.0	7,135.0
7/13/2007	INDUCTION	870.0	7,155.0
7/23/2007	CBL/CCL/GR	1,810.0	7,126.0
6/1/2018	GYRO	13.0	6,850.0

Plug Back Total Depths			
Date	Type	Com	Depth (ftKB)
7/14/2007	GUIDE SHOE		7,111.0