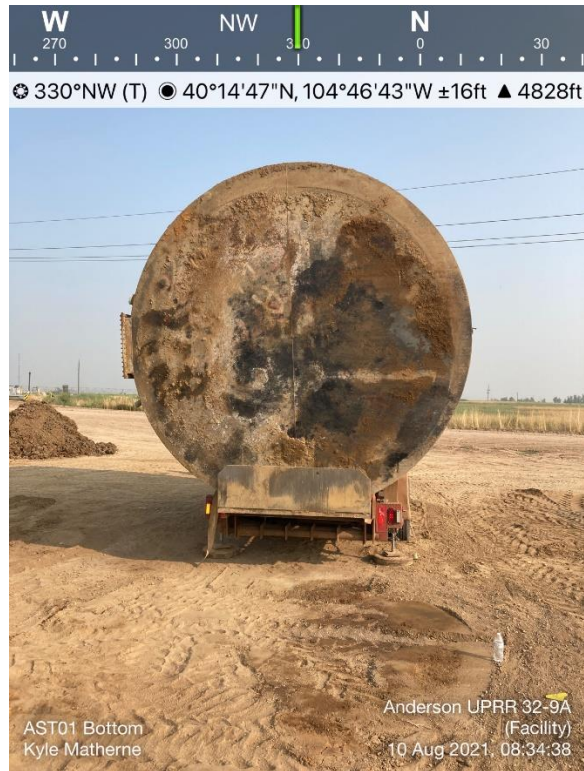


PHOTO LOG
ANDERSON UPRR 32-9A-UP O SA FACILITY
WELD COUNTY, COLORADO
KERR-MCGEE OIL & GAS ONSHORE, LP

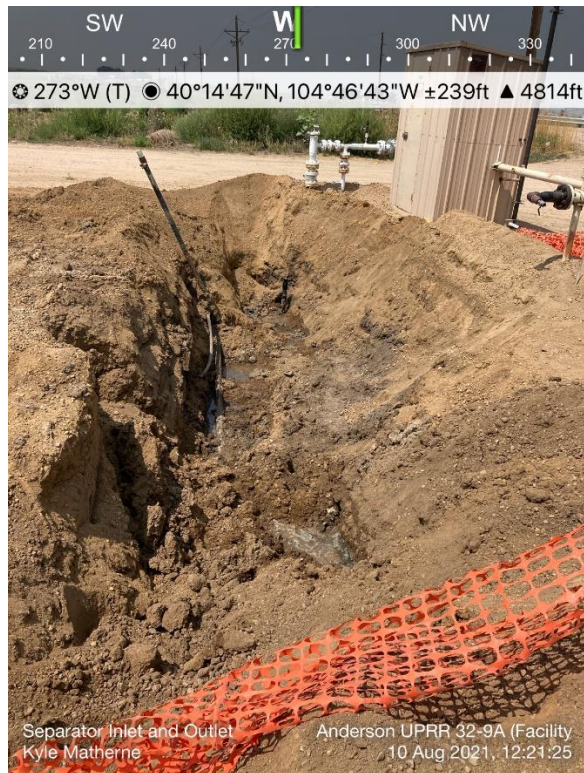


Anderson UPRR 32-9A-UP O SA Facility – AST01 Bottom



Anderson UPRR 32-9A-UP O SA Facility – AST01

PHOTO LOG
ANDERSON UPPR 32-9A-UP O SA FACILITY
WELD COUNTY, COLORADO
KERR-MCGEE OIL & GAS ONSHORE, LP



Anderson UPPR 32-9A-UP O SA Facility – Separator Inlet and Outlet



Anderson UPPR 32-9A-UP O SA Facility – ECD

PHOTO LOG
ANDERSON UPPR 32-9A-UP O SA FACILITY
WELD COUNTY, COLORADO
KERR-MCGEE OIL & GAS ONSHORE, LP



Anderson UPPR 32-9A-UP O SA Facility – Meter House



Anderson UPPR 32-9A-UP O SA Facility – Pothole 01 (PH01)

PHOTO LOG
ANDERSON UPPR 32-9A-UP O SA FACILITY
WELD COUNTY, COLORADO
KERR-MCGEE OIL & GAS ONSHORE, LP



Anderson UPPR 32-9A-UP O SA Facility – AST Dumphine

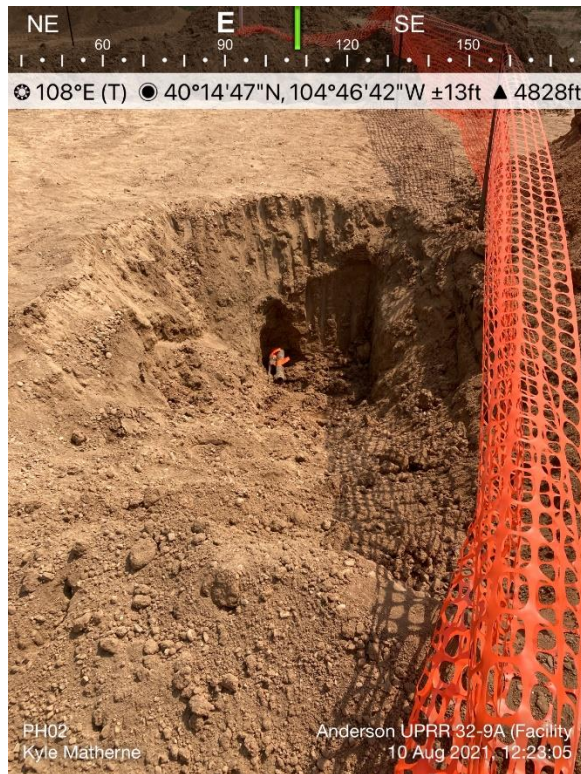


Anderson UPPR 32-9A-UP O SA Facility – AST Dumphine

PHOTO LOG
ANDERSON UPRR 32-9A-UP O SA FACILITY
WELD COUNTY, COLORADO
KERR-MCGEE OIL & GAS ONSHORE, LP

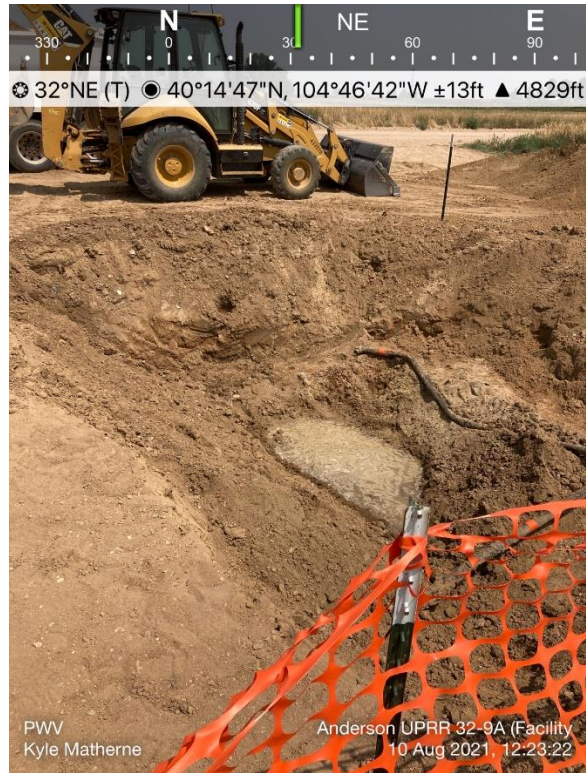


Anderson UPRR 32-9A-UP O SA Facility – AST01 Base



Anderson UPRR 32-9A-UP O SA Facility – Pothole 02 (PH02)

PHOTO LOG
ANDERSON UPPR 32-9A-UP O SA FACILITY
WELD COUNTY, COLORADO
KERR-MCGEE OIL & GAS ONSHORE, LP



Anderson UPPR 32-9A-UP O SA Facility – Produced Water Vessel (PWCV)

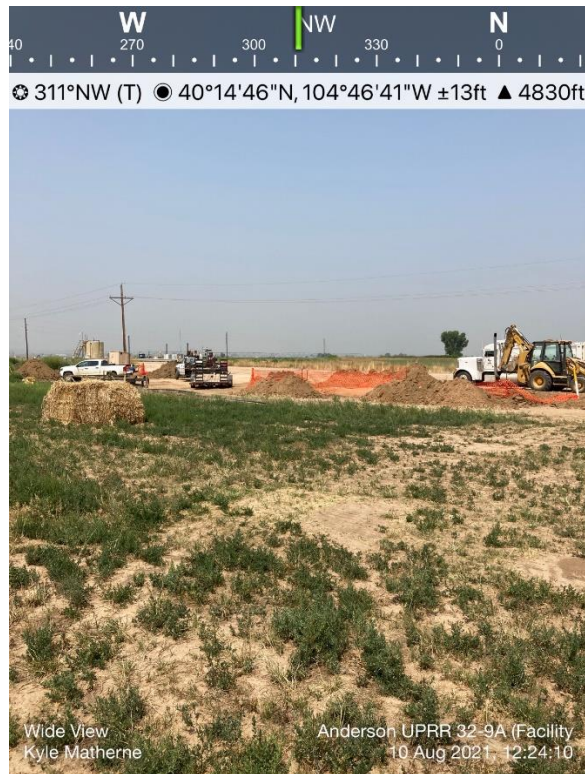


Anderson UPPR 32-9A-UP O SA Facility – Produced Water Vessel

PHOTO LOG
ANDERSON UPPR 32-9A-UP O SA FACILITY
WELD COUNTY, COLORADO
KERR-MCGEE OIL & GAS ONSHORE, LP



Anderson UPPR 32-9A-UP O SA Facility – Native Background 01



Anderson UPPR 32-9A-UP O SA Facility – Wide View

PHOTO LOG
ANDERSON UPPR 32-9A-UP O SA FACILITY
WELD COUNTY, COLORADO
KERR-MCGEE OIL & GAS ONSHORE, LP



Anderson UPPR 32-9A-UP O SA Facility – Separator 01 Excavation



Anderson UPPR 32-9A-UP O SA Facility – Separator 01 Excavation

PHOTO LOG
ANDERSON UPPR 32-9A-UP O SA FACILITY
WELD COUNTY, COLORADO
KERR-MCGEE OIL & GAS ONSHORE, LP



Anderson UPPR 32-9A-UP O SA Facility – Facility Excavation



Anderson UPPR 32-9A-UP O SA Facility – Facility Excavation

PHOTO LOG
ANDERSON UPPR 32-9A-UP O SA FACILITY
WELD COUNTY, COLORADO
KERR-MCGEE OIL & GAS ONSHORE, LP



Anderson UPPR 32-9A-UP O SA Facility – Facility Excavation



Anderson UPPR 32-9A-UP O SA Facility – Facility Excavation

PHOTO LOG
ANDERSON UPPR 32-9A-UP O SA FACILITY
WELD COUNTY, COLORADO
KERR-MCGEE OIL & GAS ONSHORE, LP



Anderson UPPR 32-9A-UP O SA Facility – Facility Excavation



Anderson UPPR 32-9A-UP O SA Facility – Facility Excavation

PHOTO LOG
ANDERSON UPPR 32-9A-UP O SA FACILITY
WELD COUNTY, COLORADO
KERR-MCGEE OIL & GAS ONSHORE, LP



Anderson UPPR 32-9A-UP O SA Facility – Facility Excavation



Anderson UPPR 32-9A-UP O SA Facility – Facility Excavation

PHOTO LOG
ANDERSON UPPR 32-9A-UP O SA FACILITY
WELD COUNTY, COLORADO
KERR-MCGEE OIL & GAS ONSHORE, LP



Anderson UPPR 32-9A-UP O SA Facility – Facility Excavation

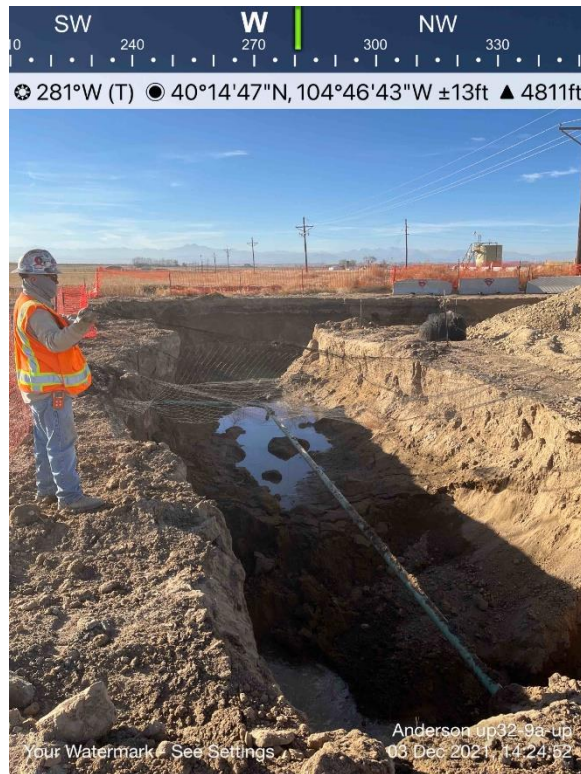


Anderson UPPR 32-9A-UP O SA Facility – Facility Excavation

PHOTO LOG
ANDERSON UPPR 32-9A-UP O SA FACILITY
WELD COUNTY, COLORADO
KERR-MCGEE OIL & GAS ONSHORE, LP

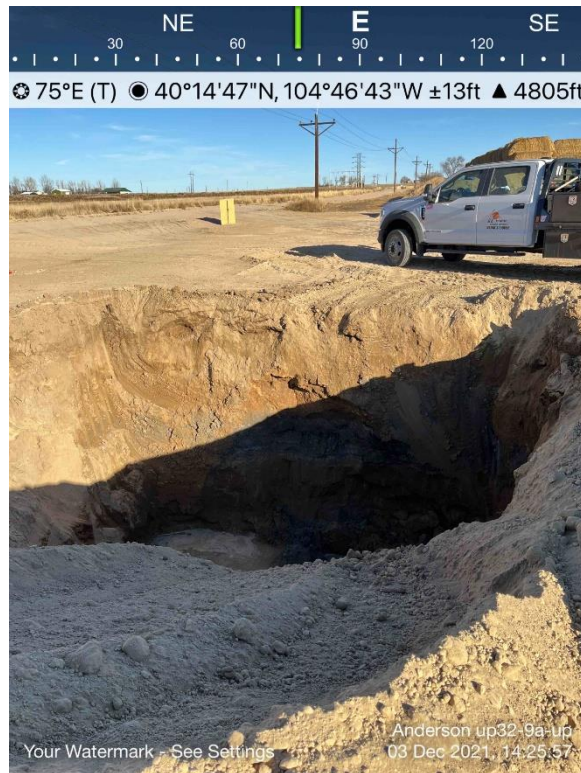


Anderson UPPR 32-9A-UP O SA Facility – Facility Excavation



Anderson UPPR 32-9A-UP O SA Facility – Facility Excavation

PHOTO LOG
ANDERSON UPPR 32-9A-UP O SA FACILITY
WELD COUNTY, COLORADO
KERR-MCGEE OIL & GAS ONSHORE, LP

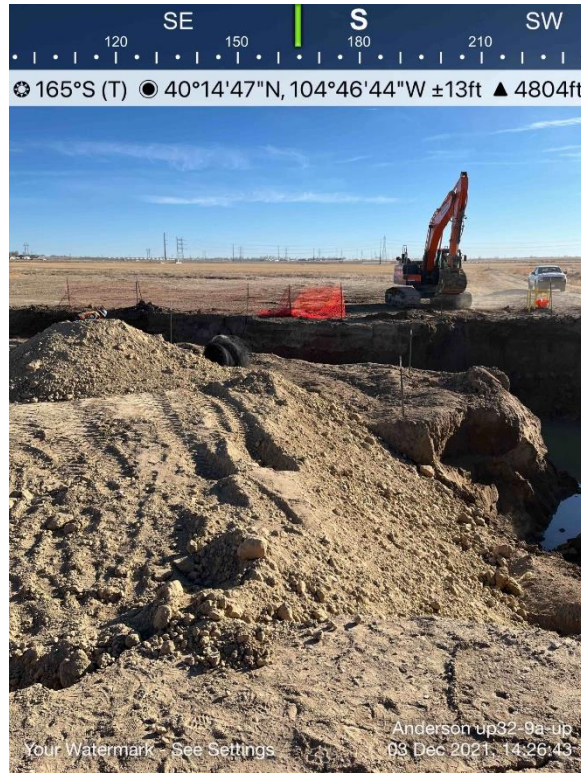


Anderson UPPR 32-9A-UP O SA Facility – Facility Excavation



Anderson UPPR 32-9A-UP O SA Facility – Facility Excavation

PHOTO LOG
ANDERSON UPPR 32-9A-UP O SA FACILITY
WELD COUNTY, COLORADO
KERR-MCGEE OIL & GAS ONSHORE, LP



Anderson UPPR 32-9A-UP O SA Facility – Facility Excavation



Anderson UPPR 32-9A-UP O SA Facility – Facility Excavation