

Vision Energy, LLC

WELL NAME	Calf Canyon 12-2
LOCATION	SENE Sec 12 T6S R102W 6 PM
GPS	39.555373, -108.708536
PDOP	
GPS OPERATOR	Gary Berschauer
DATE	1/26/1981
FEDERAL LEASE No.	COC 10378

FIELD	Calf Canyon 9670
COUNTY	Garfield
API #	05-045-06055
FORMATION	Dry Hole
COGCC LOCATION ID	322333
COGCC FACILITY ID	210299
ELEVATION	6464'

CASING

SURFACE	
SIZE & WT	10 3/4" 40.5#
SET @	180'
HOLE SIZE	15"
CEMENT	150 sxs

TOC @ surface 0

PRODUCTION

SIZE & WT	7 5/8" 26.4#
SET @	6856'
HOLE SIZE	9 7/8"
CEMENT	100 sxs

TOC @ 2831

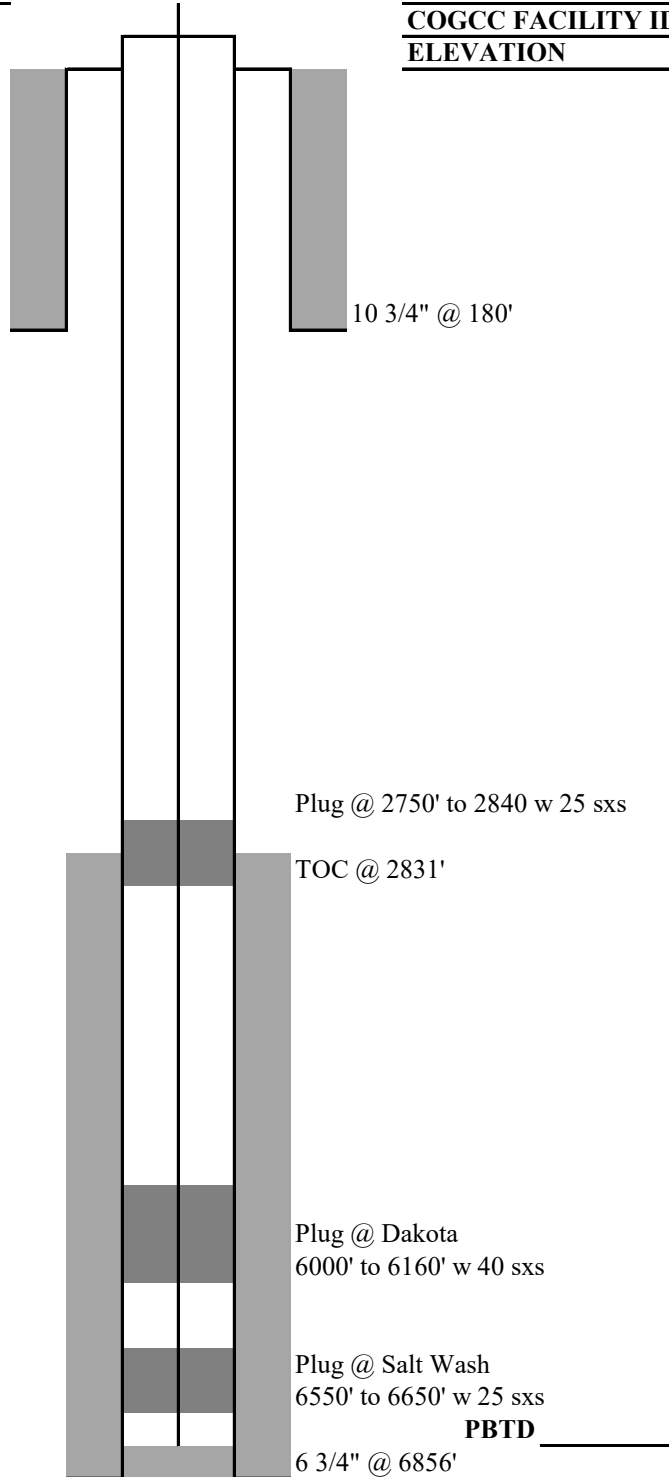
PERFORATIONS

None

FORMATION TOPS

Mesaverde	Surface
Castlegate	2142'
Mancos	2196'
Frontier	5744'
Dakota Silt	6060'
Entrada	6816'

TOTAL DEPTH 6864'



Vision Energy, LLC

WELL NAME	Calf Canyon 12-2
LOCATION	SENE Sec 12 T6S R102W 6 PM
GPS	39.555373, -108.708536
PDOP	
GPS OPERATOR	
DATE	
FEDERAL LEASE No.	COC 10378

FIELD	Calf Canyon 9670
COUNTY	Garfield
API #	05-045-06055
FORMATION	Dry Hole
COGCC LOCATION ID	322333
COGCC FACILITY ID	210299
ELEVATION	6464'

CASING

SURFACE	
SIZE & WT	10 3/4" 40.5#
SET @	180'
HOLE SIZE	15"
CEMENT	150 sxs

TOC @ surface 0

PRODUCTION

SIZE & WT	7 5/8" 26.4#
SET @	6856'
HOLE SIZE	9 7/8"
CEMENT	100 sxs

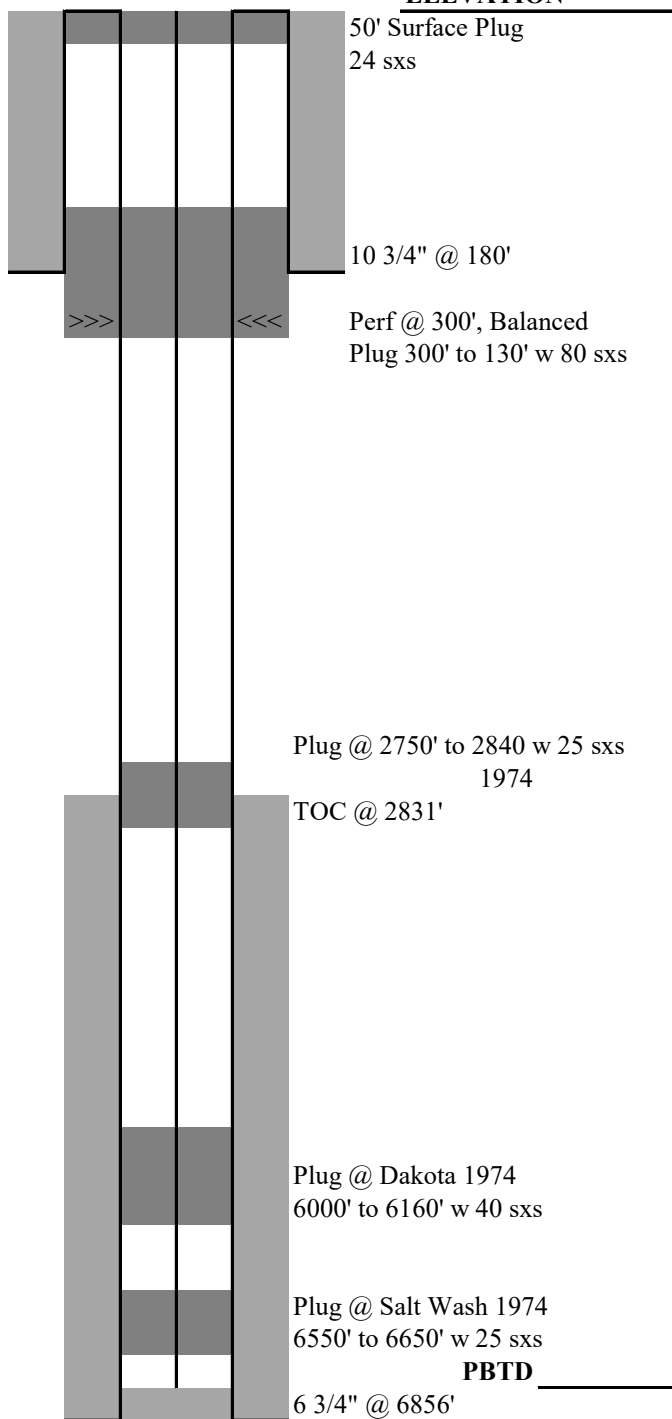
TOC @ 2831

PERFORATIONS

None

FORMATION TOPS

Mesaverde	Surface
Castlegate	2142'
Mancos	2196'
Frontier	5744'
Dakota Silt	6060'
Entrada	6816'



TOTAL DEPTH 6864'

Vision Energy, LLC
Calf Canyon 12-2
Garfield County
SENE Section 12, T6S, R102W
COC-10378
API # 05-045-6055

1. Perform Bradenhead test on well.
2. Level off enough of location to be able to set rig, base beam and pump and pit.
3. Perforate 7-5/8" casing at 230' and establish circulation through bradenhead.
4. Spot a balanced plug from 230' up to 130' using a minimum of 50 sacks of Class II neat cement inside and outside of casing.
5. Wait at least 1.5 hours and then tag cement top. If not at 130' or higher, top off with additional cement to get to that depth.
6. Excavate around surface casing and cut off casing 4' below grade.
7. Top off the 7-5/8" and 7-5/8" X 10-3/4" annulus with cement from 50' (~24 sxs) back to surface.
8. Weld a steel marker plate with weep hole onto the casing stub. The marker plate is to be inscribed with the following information:

Maralex Resources, Inc./Vision Energy, LLC
Calf Canyon 12-2
COC 10378
SENE 12 6S 102W
05-045-6055

Regulatory Contacts:

BLM – Jim Annable O: 970.876.9033 C: 970.930.7188

COGCC – Aaron Katz O: 303.894.2100 ext. 5691 C: 970.765.6300