



FIGURES

Figure 1: Soil Boring Soil Analytical Map

Figure 2: Soil Boring Polycyclic Aromatic Hydrocarbons Map

SB-03@5-7.5'	SB-03@7.5-10'
02/11/22	02/11/22
5-7.5'	7.5-10'
B = <0.00200	B = <0.00200
T = <0.00200	T = <0.00200
E = <0.00200	E = <0.00200
X = <0.00200	X = 0.00734
G = <0.200	G = <0.200
D = <25.0	D = <25.0
R = <100	R = <100
1,2,4-TMB = <0.00200	1,2,4-TMB = <0.00200
1,3,5-TMB = <0.00200	1,3,5-TMB = <0.00200

SB-01@5-7.5'	SB-01@7.5-10'	SB-01@10-12.5'	SB-01@17.5-20'
02/11/22	02/11/22	02/11/22	02/11/22
5-7.5'	7.5-10'	10-12.5'	17.5-20'
B = <0.00200	B = <0.00200	B = <0.00200	B = <0.00200
T = <0.00200	T = <0.00200	T = <0.00200	T = <0.00200
E = <0.00200	E = <0.00200	E = <0.00200	E = <0.00200
X = <0.00200	X = <0.00200	X = <0.00200	X = <0.00200
G = <0.200	G = <0.200	G = <0.200	G = <0.200
D = <25.0	D = <25.0	D = <25.0	D = <25.0
R = <100	R = <100	R = <100	R = <100
1,2,4-TMB = <0.00200	1,2,4-TMB = <0.00200	1,2,4-TMB = <0.00200	1,2,4-TMB = <0.00200
1,3,5-TMB = <0.00200	1,3,5-TMB = <0.00200	1,3,5-TMB = <0.00200	1,3,5-TMB = <0.00200

SB-02@5-7.5'	SB-02@7.5-10'
02/11/22	02/11/22
5-7.5'	7.5-10'
B = <0.00200	B = <0.00200
T = <0.00200	T = <0.00200
E = <0.00200	E = <0.00200
X = 0.00704	X = <0.00200
G = <0.200	G = <0.200
D = <25.0	D = <25.0
R = <100	R = <100
1,2,4-TMB = <0.00200	1,2,4-TMB = <0.00200
1,3,5-TMB = <0.00200	1,3,5-TMB = <0.00200

SB-05@5-7.5'	SB-05@7.5-10'
02/11/22	02/11/22
5-7.5'	7.5-10'
B = <0.00200	B = <0.00200
T = <0.00200	T = <0.00200
E = <0.00200	E = <0.00200
X = 0.00750	X = 0.00724
G = <0.200	G = <0.200
D = <25.0	D = <25.0
R = <100	R = <100
1,2,4-TMB = <0.00200	1,2,4-TMB = <0.00200
1,3,5-TMB = <0.00200	1,3,5-TMB = <0.00200

SB-04@5-7.5'	SB-04@7.5-10'
02/11/22	02/11/22
5-7.5'	7.5-10'
B = <0.00200	B = <0.00200
T = <0.00200	T = <0.00200
E = <0.00200	E = <0.00200
X = 0.00716	X = <0.00200
G = <0.200	G = <0.200
D = <25.0	D = <25.0
R = <100	R = <100
1,2,4-TMB = <0.00200	1,2,4-TMB = <0.00200
1,3,5-TMB = <0.00200	1,3,5-TMB = <0.00200

LEGEND

- INITIAL ASSESSMENT BOUNDARIES
- ADDITIONAL SOURCE EXCAVATION BOUNDARIES
- PREVIOUS SOIL SAMPLES EXCEEDING PROTECTION OF GROUNDWATER SOIL SCREENING LEVELS, ONLY
- SB-01 APPROXIMATE SOIL BORING LOCATIONS

PARAMETERS

SAMPLE LOCATION
DATE
DEPTH (FEET)
B = BENZENE (mg/kg)
T = TOLUENE (mg/kg)
E = ETHYLBENZENE (mg/kg)
X = TOTAL XYLENES (mg/kg)
G = TPH-GRO (mg/kg)
D = TPH-DRO (mg/kg)
R = TPH-RRO (mg/kg)
1,2,4-TMB = 1,2,4 TRIMETHYLBENZENE (mg/kg)
1,3,5-TMB = 1,3,5 TRIMETHYLBENZENE (mg/kg)

mg/kg = MILLIGRAMS PER KILOGRAM

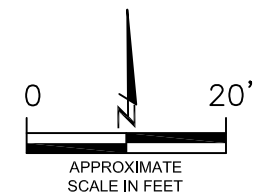
TPH-GRO = TOTAL PETROLEUM HYDROCARBONS - GASOLINE RANGE ORGANICS
 TPH-DRO = TOTAL PETROLEUM HYDROCARBONS - DIESEL RANGE ORGANICS
 TPH-RRO = TOTAL PETROLEUM HYDROCARBONS - RESIDUAL RANGE ORGANICS

NOTE: VALUES PRESENTED WITH A LESS THAN SYMBOL (<) DID NOT CONTAIN CONCENTRATIONS AT OR ABOVE LABORATORY DETECTION LIMITS

VALUES PRESENTED IN **BOLD** VALUES CONTAIN CONCENTRATIONS EXCEEDING COGCC TABLE 915-1 VALUES

VALUES PRESENTED WITH ASTERISK (*) EXCEED COGCC TABLE 915-1 PROTECTION OF GROUNDWATER SOIL SCREENING LEVELS FOR THAT COMPOUND

COGCC = COLORADO OIL AND GAS CONSERVATION COMMISSION



SOIL BORING SOIL ANALYTICAL MAP
 FIDUCIAL 6-62-34.35 SWSW
 OIL RELEASE
 40.440320 / -104.317498
 SW1/4 SW1/4 SEC.34 T6N R62W 6PM
 WELD COUNTY, COLORADO
 LOCATION ID 436863
 REMEDIATION # 21699

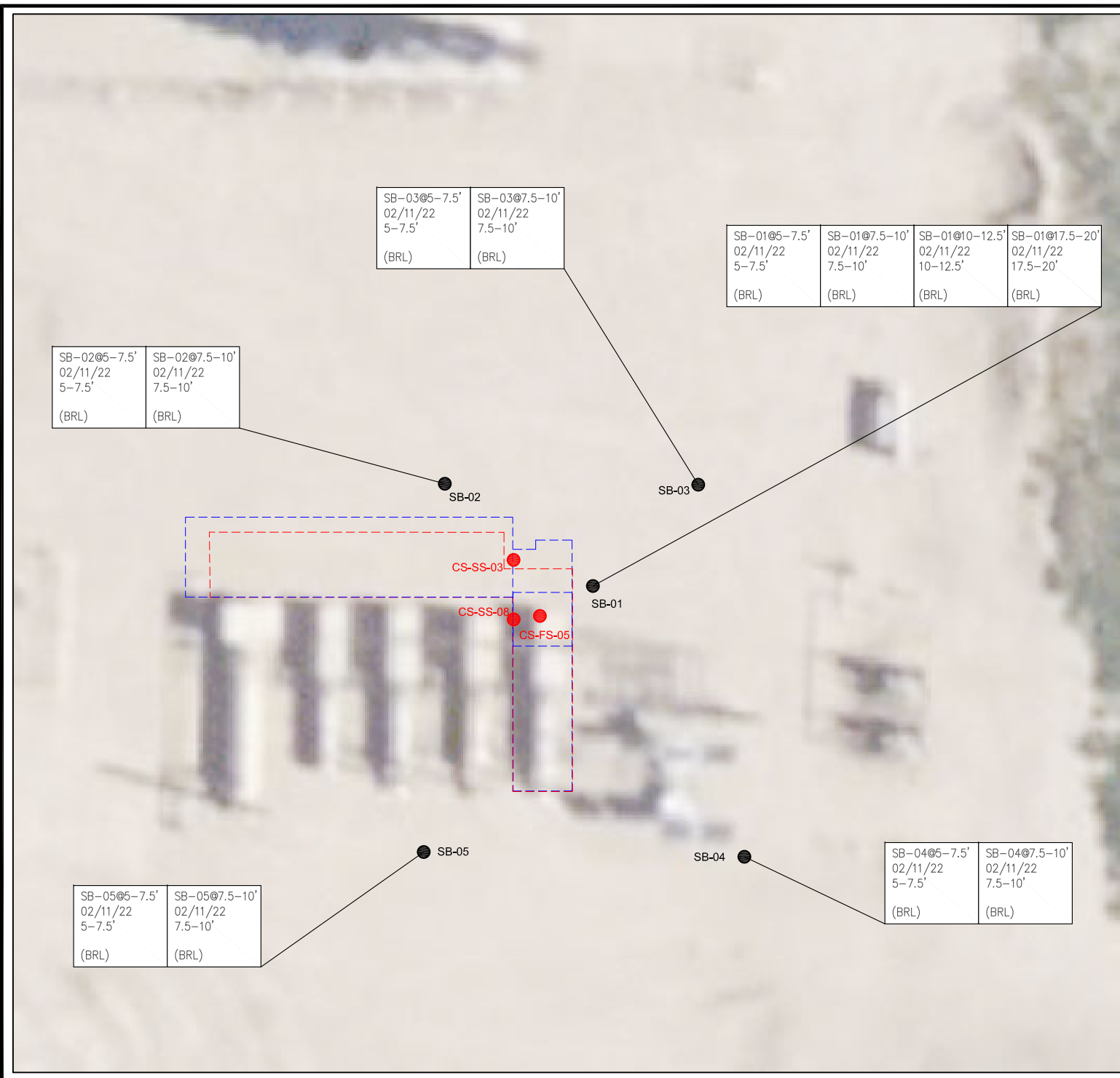
DATE:
03/15/22

DRAWN BY:
AMN

FIG.
NO. 1



EAGLE
 ENVIRONMENTAL
 CONSULTING, INC.
 8000 W 44th Ave, Wheat Ridge, CO 80033
 Ph: 303-433-0479 • F: 303-325-5449



LEGEND

- INITIAL ASSESSMENT BOUNDARIES
- ADDITIONAL SOURCE EXCAVATION BOUNDARIES
- PREVIOUS SOIL SAMPLES EXCEEDING PROTECTION OF GROUNDWATER SOIL SCREENING LEVELS, ONLY
- SB-01 APPROXIMATE SOIL BORING LOCATIONS

PARAMETERS

SAMPLE LOCATION
DATE SAMPLE COLLECTED
APPROXIMATE DEPTH
POLYCYCLIC AROMATIC HYDROCARBONS (PAHs)

NOTE:
CONCENTRATIONS PRESENTED IN mg/kg

mg/kg = MILLIGRAMS PER KILOGRAM

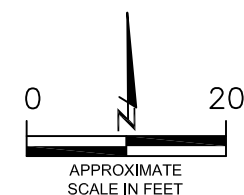
(BRL) = ALL CONCENTRATIONS ARE BELOW REGULATORY LIMITS

NOTE:
VALUES PRESENTED WITH A LESS THAN SYMBOL (<) DID NOT CONTAIN CONCENTRATIONS AT OR ABOVE LABORATORY DETECTION LIMITS

VALUES PRESENTED IN **BOLD** TYPEFACE EXCEED APPLICABLE COGCC TABLE 915-1 REGULATORY LIMITS FOR THAT COMPOUND

VALUES PRESENTED WITH AN ASTERISK (*) EXCEED COGCC TABLE 915-1 PROTECTION OF GROUNDWATER SOIL SCREENING LEVELS

COGCC - COLORADO OIL AND GAS CONSERVATION COMMISSION

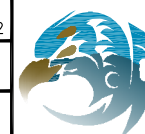


SOIL BORING POLYCYCLIC AROMATIC HYDROCARBONS MAP
FIDUCIAL 6-62-34_35 SWSW
OIL RELEASE
40.440320 / -104.317498
SW1/4 SW1/4 SEC.34 T6N R62W 6PM
WELD COUNTY, COLORADO
LOCATION ID 436863
REMEDATION # 21699

DATE:
03/15/22

DRAWN BY:
AMN

FIG.
NO. 2



EAGLE
ENVIRONMENTAL
CONSULTING, INC.
8000 W 44th Ave, Wheat Ridge, CO 80033
Ph: 303-433-0479 • F: 303-325-5449



TABLES

Table 1: Photoionization Detector Reading Summary

Table 2: Soil Analytical Results Summary

Table 3: Polycyclic Aromatic Hydrocarbons Analytical Results Summary

TABLE 1
PID READING SUMMARY
FIDUCIAL 6-62-34_35 SWSW
OIL RELEASE
40.440320 / -104.317498
SW1/4 SW1/4 SEC.34 T6N R62W 6PM
WELD COUNTY, COLORADO
LOCATION ID 436863
REMEDIAION # 21699

Sample Location (Latitude/Longitude)	Date	Approximate Depth (feet)	PID Reading (ppm-v)	Lab Submission (Y/N)
SS-01 @ 0.75' (40.440308 / -104.317527)	10/05/21	0.75	2.1	Y
SS-02 @ 0.75' (40.440308 / -104.317445)	10/05/21	0.75	4.2	Y
SS-03 @ 1' (40.440283 / -104.317446)	10/05/21	1	2.0	Y
SS-04 @ 1' (40.440284 / -104.317522)	10/05/21	1	1.8	Y
SS-05 @ 1' (40.440294 / -104.317556)	10/05/21	1	4.9	Y
SS-06 @ 3' (40.440301 / -104.317387)	10/05/21	3	3.6	Y
SS-07 @ 3.5' (40.440276 / -104.317371)	10/05/21	3.5	1.1	Y
SS-08 @ 3.5' (40.440236 / -104.317370)	10/05/21	3.5	1.4	Y
SS-09 @ 3.5' (40.440215 / -104.317383)	10/05/21	3.5	3.3	Y
SS-10 @ 4' (40.440235 / -104.317400)	10/05/21	4	0.7	Y
SS-11 @ 4' (40.440270 / -104.317399)	10/05/21	4	1.6	Y
FS-01 @ 1.5' (40.440295 / -104.317512)	10/05/21	2	7.8	Y
FS-02 @ 1.5' (40.440295 / -104.317454)	10/05/21	2	8.1	Y
FS-03 @ 5' (40.440275 / -104.317385)	10/05/21	5.0	6.7	Y
FS-04 @ 5.5' (40.440238 / -104.317383)	10/05/21	5.5	2.2	Y
CS-SS-01 @ 1' (40.440310 / -104.317527)	11/05/21	1	1.3	Y
CS-SS-02 @ 1' (40.440310 / -104.317445)	11/05/21	1	2.5	Y
CS-SS-03 @ 1' (40.440298 / -104.317429)	11/05/21	1	13.9	Y
CS-SS-04 @ 1' (40.440283 / -104.317446)	11/05/21	1	4.4	Y
CS-SS-05 @ 1' (40.440284 / -104.317522)	11/05/21	1	3.8	Y
CS-SS-06 @ 1' (40.440294 / -104.317567)	11/05/21	1	5.5	Y
CS-FS-01 @ 2' (40.440294 / -104.317513)	11/05/21	2	6.3	Y

TABLE 1
PID READING SUMMARY
FIDUCIAL 6-62-34_35 SWSW
OIL RELEASE
40.440320 / -104.317498
SW1/4 SW1/4 SEC.34 T6N R62W 6PM
WELD COUNTY, COLORADO
LOCATION ID 436863
REMEDIAION # 21699

Sample Location (Latitude/Longitude)	Date	Approximate Depth (feet)	PID Reading (ppm-v)	Lab Submission (Y/N)
CS-FS-02 @ 2' (40.440295 / -104.317453)	11/05/21	2	5.7	Y
CS-FS-03 @ 6' (40.440274 / -104.317384)	11/05/21	6	7.8	Y
CS-FS-04 @ 6' (40.440238 / -104.317384)	11/05/21	6	6.8	Y
CS-SS-07 @ 1' (40.440306 / -104.317389)	12/01/21	1	7.5	Y
CS-SS-08 @ 7.5' (40.440272 / -104.317399)	12/01/21	7.5	2.3	Y
CS-SS-09 @ 7.5' (40.440301 / -104.317386)	12/01/21	7.5	9.6	Y
CS-SS-10 @ 7.5' (40.4402771 / -104.317371)	12/01/21	7.5	1.4	Y
CS-FS-05 @ 8.5' (40.440274 / -104.317384)	12/01/21	8.5	5.6	Y
SB-01 @ 5-7.5' (40.440296 / -104.317385)	02/11/22	5-7.5	1.1	Y
SB-01 @ 7.5-10' (40.440296 / -104.317385)	02/11/22	7.5-10	0.6	Y
SB-01 @ 10-12.5' (40.440296 / -104.317385)	02/11/22	10-12.5	1.4	Y
SB-01 @ 17.5-20' (40.440296 / -104.317385)	02/11/22	17.5-20	1.6	Y
SB-02 @ 5-7.5' (40.440314 / -104.317538)	02/11/22	5-7.5	1.8	Y
SB-02 @ 7.5-10' (40.440314 / -104.317538)	02/11/22	7.5-10	1.7	Y
SB-03 @ 5-7.5' (40.440369 / -104.317343)	02/11/22	5-7.5	1.6	Y
SB-03 @ 7.5-10' (40.440369 / -104.317343)	02/11/22	7.5-10	1.9	Y
SB-04 @ 5-7.5' (40.440153 / -104.317384)	02/11/22	5-7.5	1.0	Y
SB-04 @ 7.5-10' (40.440153 / -104.317384)	02/11/22	7.5-10	1.0	Y
SB-05 @ 5-7.5' (40.440173 / -104.317546)	02/11/22	5-7.5	1.1	Y
SB-05 @ 7.5-10' (40.440173 / -104.317546)	02/11/22	7.5-10	1.3	Y
(Y/N) = Yes or No ppm-v = parts per million by volume PID = Photoionization Detector				

TABLE 2
SOIL ANALYTICAL RESULTS SUMMARY
FIDUCIAL 6-62-34_35 SWSW
OIL RELEASE
40.440320 / -104.317498
SW1/4 SW1/4 SEC.34 T6N R62W 6PM
WELD COUNTY, COLORADO
LOCATION ID 436863
REMEDATION # 21699

Sample Location (Latitude/Longitude)	Date	Approximate Depth (feet)	PID Reading (ppm-v)	Benzene (mg/kg)	Toluene (mg/kg)	Ethylbenzene (mg/kg)	Total Xylenes (mg/kg)	TPH-GRO (mg/kg)	TPH-DRO (mg/kg)	TPH-RRO (mg/kg)	1,2,4-TMB (mg/kg)	1,3,5-TMB (mg/kg)
COGCC Table 915-1 Residential Screening Levels (mg/kg)				1.20	490	5.8	58	500			30	27
COGCC Table 915-1 Protection of Groundwater Soil Screening Levels (mg/kg)				0.0026	0.69	0.78	9.9	--			0.0081	0.0087
SS-01 @ 0.75' (40.440308 / -104.317527)	10/05/21	0.75	2.1	<0.00200	<0.00200	<0.00200	<0.00200	<0.200	<25.0	<100	<0.00200	<0.00200
SS-02 @ 0.75' (40.440308 / -104.317445)	10/05/21	0.75	4.2	<0.00200	<0.00200	<0.00200	<0.00200	<0.200	57.4	<100	<0.00200	<0.00200
SS-03 @ 1' (40.440283 / -104.317446)	10/05/21	1	2.0	<0.00200	<0.00200	<0.00200	<0.00200	<0.200	<25.0	<100	<0.00200	<0.00200
SS-04 @ 1' (40.440284 / -104.317522)	10/05/21	1	1.8	<0.00200	<0.00200	<0.00200	<0.00200	<0.200	<25.0	<100	<0.00200	<0.00200
SS-05 @ 1' (40.440294 / -104.317556)	10/05/21	1	4.9	<0.0500*	<0.0500	<0.0500	<0.0500	79.2	945	661	<0.0500*	<0.0500*
SS-06 @ 3' (40.440301 / -104.317387)	10/05/21	3	3.6	<0.00200	<0.00200	<0.00200	<0.00200	<0.200	<25.0	<100	<0.00200	<0.00200
SS-07 @ 3.5' (40.440276 / -104.317371)	10/05/21	3.5	1.1	<0.00200	<0.00200	<0.00200	<0.00200	<0.200	<25.0	<100	<0.00200	<0.00200
SS-08 @ 3.5' (40.440236 / -104.317370)	10/05/21	3.5	1.4	<0.00200	<0.00200	<0.00200	<0.00200	<0.200	<25.0	<100	<0.00200	<0.00200
SS-09 @ 3.5' (40.440215 / -104.317383)	10/05/21	3.5	3.3	<0.00200	<0.00200	<0.00200	<0.00200	<0.200	<25.0	<100	<0.00200	<0.00200
SS-10 @ 4' (40.440235 / -104.317400)	10/05/21	4	0.7	<0.00200	<0.00200	<0.00200	<0.00200	<0.200	<25.0	<100	<0.00200	<0.00200
SS-11 @ 4' (40.440270 / -104.317399)	10/05/21	4	1.6	<0.00200	<0.00200	<0.00200	<0.00200	<0.200	<25.0	<100	<0.00200	<0.00200
FS-01 @ 1.5' (40.440295 / -104.317512)	10/05/21	2	7.8	<0.00200	<0.00200	<0.00200	<0.00200	1.54	160	160	<0.00200	<0.00200
FS-02 @ 1.5' (40.440295 / -104.317454)	10/05/21	2	8.1	<0.00200	<0.00200	<0.00200	<0.00200	0.385	503	368	<0.00200	<0.00200
FS-03 @ 5' (40.440275 / -104.317385)	10/05/21	5.0	6.7	<0.00200	<0.00200	<0.00200	<0.00200	<0.200	<25.0	<100	<0.00200	<0.00200
FS-04 @ 5.5' (40.440238 / -104.317383)	10/05/21	5.5	2.2	<0.00200	<0.00200	<0.00200	<0.00200	<0.200	<25.0	<100	<0.00200	<0.00200
CS-SS-01 @ 1' (40.440310 / -104.317527)	11/05/21	1	1.3	<0.00200	<0.00200	<0.00200	<0.00200	<0.200	<25.0	<100	<0.00200	<0.00200
CS-SS-02 @ 1' (40.440310 / -104.317445)	11/05/21	1	2.5	<0.00200	<0.00200	<0.00200	<0.00200	<0.200	<25.0	<100	<0.00200	<0.00200
CS-SS-03 @ 1' (40.440298 / -104.317429)	11/05/21	1	13.9	<0.00200	<0.00200	<0.00200	0.0958	4.54	313	263	0.0219*	0.0520*
CS-SS-04 @ 1' (40.440283 / -104.317446)	11/05/21	1	4.4	<0.00200	<0.00200	<0.00200	<0.00200	<0.200	<25.0	<100	<0.00200	<0.00200
CS-SS-05 @ 1' (40.440284 / -104.317522)	11/05/21	1	3.8	<0.00200	<0.00200	<0.00200	<0.00200	<0.200	<25.0	<100	<0.00200	<0.00200
CS-SS-06 @ 1' (40.440294 / -104.317567)	11/05/21	1	5.5	<0.00200	<0.00200	<0.00200	<0.00200	<0.200	<25.0	<100	<0.00200	<0.00200
CS-FS-01 @ 2' (40.440294 / -104.317513)	11/05/21	2	6.3	<0.00200	<0.00200	<0.00200	<0.00200	<0.200	<25.0	<100	<0.00200	<0.00200
CS-FS-02 @ 2' (40.440295 / -104.317453)	11/05/21	2	5.7	<0.00200	<0.00200	<0.00200	<0.00200	<0.200	<25.0	<100	<0.00200	<0.00200
CS-FS-03 @ 6' (40.440274 / -104.317384)	11/05/21	6	7.8	<0.00200	<0.00200	<0.00200	<0.00200	3.08	686	296	<0.00200	<0.00200
CS-FS-04 @ 6' (40.440238 / -104.317384)	11/05/21	6	6.8	<0.00200	<0.00200	<0.00200	<0.00200	<0.200	<25.0	<100	<0.00200	<0.00200

TABLE 2
SOIL ANALYTICAL RESULTS SUMMARY
FIDUCIAL 6-62-34_35 SWSW
OIL RELEASE
40.440320 / -104.317498
SW1/4 SW1/4 SEC.34 T6N R62W 6PM
WELD COUNTY, COLORADO
LOCATION ID 436863
REMEDATION # 21699

Sample Location (Latitude/Longitude)	Date	Approximate Depth (feet)	PID Reading (ppm-v)	Benzene (mg/kg)	Toluene (mg/kg)	Ethylbenzene (mg/kg)	Total Xylenes (mg/kg)	TPH-GRO (mg/kg)	TPH-DRO (mg/kg)	TPH-RRO (mg/kg)	1,2,4-TMB (mg/kg)	1,3,5-TMB (mg/kg)
COGCC Table 915-1 Residential Screening Levels (mg/kg)				1.20	490	5.8	58	500			30	27
COGCC Table 915-1 Protection of Groundwater Soil Screening Levels (mg/kg)				0.0026	0.69	0.78	9.9	--			0.0081	0.0087
CS-SS-07 @ 1' (40.440306 / -104.317389)	12/01/21	1	7.5	<0.00200	<0.00200	<0.00200	<0.00200	<0.200	<25.0	<100	<0.00200	<0.00200
CS-SS-08 @ 7.5' (40.440272 / -104.317399)	12/01/21	7.5	2.3	<0.00200	<0.00200	<0.00200	<0.00200	0.798	178	<100	0.00232	0.00212
CS-SS-09 @ 7.5' (40.440301 / -104.317386)	12/01/21	7.5	9.6	<0.00200	<0.00200	<0.00200	<0.00200	<0.200	<25.0	<100	<0.00200	<0.00200
CS-SS-10 @ 7.5' (40.4402771 / -104.317371)	12/01/21	7.5	1.4	<0.00200	<0.00200	<0.00200	<0.00200	<0.200	<25.0	<100	<0.00200	<0.00200
CS-FS-05 @ 8.5' (40.440274 / -104.317384)	12/01/21	8.5	5.6	<0.00200	<0.00200	<0.00200	0.00328	4.82	160	<100	0.0145*	0.0147*
SB-01 @ 5-7.5' (40.440296 / -104.317385)	02/11/22	5-7.5	1.1	<0.00200	<0.00200	<0.00200	<0.00200	<0.200	<25.0	<100	<0.00200	<0.00200
SB-01 @ 7.5-10' (40.440296 / -104.317385)	02/11/22	7.5-10	0.6	<0.00200	<0.00200	<0.00200	<0.00200	<0.200	<25.0	<100	<0.00200	<0.00200
SB-01 @ 10-12.5' (40.440296 / -104.317385)	02/11/22	10-12.5	1.4	<0.00200	<0.00200	<0.00200	<0.00200	<0.200	<25.0	<100	<0.00200	<0.00200
SB-01 @ 17.5-20' (40.440296 / -104.317385)	02/11/22	17.5-20	1.6	<0.00200	<0.00200	<0.00200	<0.00200	<0.200	<25.0	<100	<0.00200	<0.00200
SB-02 @ 5-7.5' (40.440314 / -104.317538)	02/11/22	5-7.5	1.8	<0.00200	<0.00200	<0.00200	0.00704	<0.200	<25.0	<100	<0.00200	<0.00200
SB-02 @ 7.5-10' (40.440314 / -104.317538)	02/11/22	7.5-10	1.7	<0.00200	<0.00200	<0.00200	<0.00200	<0.200	<25.0	<100	<0.00200	<0.00200
SB-03 @ 5-7.5' (40.440369 / -104.317343)	02/11/22	5-7.5	1.6	<0.00200	<0.00200	<0.00200	<0.00200	<0.200	<25.0	<100	<0.00200	<0.00200
SB-03 @ 7.5-10' (40.440369 / -104.317343)	02/11/22	7.5-10	1.9	<0.00200	<0.00200	<0.00200	0.000734	<0.200	<25.0	<100	<0.00200	<0.00200
SB-04 @ 5-7.5' (40.440153 / -104.317384)	02/11/22	5-7.5	1.0	<0.00200	<0.00200	<0.00200	0.00716	<0.200	<25.0	<100	<0.00200	<0.00200
SB-04 @ 7.5-10' (40.440153 / -104.317384)	02/11/22	7.5-10	1.0	<0.00200	<0.00200	<0.00200	<0.00200	<0.200	<25.0	<100	<0.00200	<0.00200
SB-05 @ 5-7.5' (40.440173 / -104.317546)	02/11/22	5-7.5	1.1	<0.00200	<0.00200	<0.00200	0.00750	<0.200	<25.0	<100	<0.00200	<0.00200
SB-05 @ 7.5-10' (40.440173 / -104.317546)	02/11/22	7.5-10	1.3	<0.00200	<0.00200	<0.00200	0.00724	<0.200	<25.0	<100	<0.00200	<0.00200

COGCC = Colorado Oil and Gas Conservation Commission
mg/kg = milligrams per kilogram
PID = Photoionization Detector
ppm-v = parts per million by volume
1,2,4-TMB = 1,2,4-Trimethylbenzene
1,3,5-TMB = 1,3,5-Trimethylbenzene
Note: Values presented with a less than symbol (<) did not contain concentrations at or above the laboratory reporting limit.
Note: Values presented in **BOLD** contained concentrations exceeding applicable COGCC Table 915-1 Regulatory Limits
Note: Values presented in **BOLD** with asterisk (*) contained concentrations exceeding applicable COGCC Table 915-1 "Protection of Groundwater Soil Screening Levels"

TPH-GRO = Total Petroleum Hydrocarbons - Gasoline Range Organics
TPH-DRO = Total Petroleum Hydrocarbons - Diesel Range Organics
TPH-RRO = Total Petroleum Hydrocarbons - Residual Range Organics

TABLE 3
PAH ANALYTICAL RESULTS SUMMARY
FIDUCIAL 6-62-34_35 SWSW
OIL RELEASE
40.440320 / -104.317498
SW1/4 SW1/4 SEC.34 T6N R62W 6PM
WELD COUNTY, COLORADO
LOCATION ID 436863
REMEDATION # 21699

Sample Location (Latitude/Longitude)	Date	Approximate Depth (feet)	PID Reading (ppm-v)	1-Methyl- naphthalene (mg/kg)	2-Methyl-naphthalene (mg/kg)	Acenaphthene (mg/kg)	Anthracene (mg/kg)	Benzo(a)-anthracene (mg/kg)	Benzo(a)- pyrene (mg/kg)	Benzo(b)- fluoranthene (mg/kg)	Benzo(k)- fluoranthene (mg/kg)	Chrysene (mg/kg)	Dibenzo(a,h)- anthracene (mg/kg)	Fluoranthene (mg/kg)	Fluorene (mg/kg)	Ieno(1,2,3- cd)-pyrene (mg/kg)	Naphthalene (mg/kg)	Pyrene (mg/kg)
COGCC Table 915-1 Residential Screening Levels				18	24	360	1,800	1.1	0.11	1.1	11	110	0.11	240	240	1.1	2	180
COGCC Table 915-1 Protection of Groundwater Soil Screening Levels				0.006	0.019	0.55	5.8	0.011	0.24	0.3	2.9	9	0.096	8.9	0.54	0.98	0.0038	1.3
SS-01 @ 0.75' (40.440308 / -104.317527)	10/05/21	0.75	2.1	0.00105	0.00131	<0.00067	<0.00067	<0.00067	<0.00067	<0.00067	<0.00067	0.00161	<0.00067	<0.00067	0.000801	<0.00067	<0.00067	<0.00067
SS-02 @ 0.75' (40.440308 / -104.317445)	10/05/21	0.75	4.2	0.012*	0.0108	0.00283	<0.00335	<0.00335	<0.00335	<0.00335	<0.00335	0.0105	<0.00335	<0.00335	0.0185	<0.00335	<0.00335	<0.00335
SS-03 @ 1' (40.440283 / -104.317446)	10/05/21	1	2.0	<0.00067	<0.00067	<0.00067	0.00509	<0.00067	<0.00067	<0.00067	<0.00067	0.00299	<0.00067	<0.00067	<0.00067	<0.00067	<0.00067	0.000627
SS-04 @ 1' (40.440284 / -104.317522)	10/05/21	1	1.8	0.000505	0.000554	<0.00067	<0.00067	<0.00067	<0.00067	<0.00067	<0.00067	<0.00067	<0.00067	<0.00067	<0.00067	<0.00067	<0.00067	<0.00067
SS-05 @ 1' (40.440294 / -104.317556)	10/05/21	1	4.9	2.09*	1.37*	0.124	0.0283	0.0324*	0.00482	0.0169	0.00294	0.226	<0.0067	0.011	0.528	<0.0067	0.181*	0.0804
SS-06 @ 3' (40.440301 / -104.317387)	10/05/21	3	3.6	0.000447	0.00052	<0.00067	0.000345	<0.00067	<0.00067	0.000488	<0.00067	0.00395	<0.00067	<0.00067	0.00231	<0.00067	<0.00067	<0.00067
SS-07 @ 3.5' (40.440276 / -104.317371)	10/05/21	3.5	1.1	<0.00067	<0.00067	<0.00067	<0.00067	<0.00067	0.000295	0.000554	<0.00067	0.000959	<0.00067	<0.00067	<0.00067	<0.00067	<0.00067	<0.00067
SS-08 @ 3.5' (40.440236 / -104.317370)	10/05/21	3.5	1.4	<0.00067	<0.00067	<0.00067	<0.00067	<0.00067	<0.00067	<0.00067	<0.00067	0.000641	<0.00067	<0.00067	0.000569	<0.00067	<0.00067	<0.00067
SS-09 @ 3.5' (40.440215 / -104.317383)	10/05/21	3.5	3.3	0.000413	<0.00067	<0.00067	<0.00067	<0.00067	<0.00067	<0.00067	<0.00067	<0.00067	<0.00067	<0.00067	<0.00067	<0.00067	<0.00067	<0.00067
SS-10 @ 4' (40.440335 / -104.317400)	10/05/21	4	0.7	<0.00067	<0.00067	<0.00067	<0.00067	<0.00067	0.000274	<0.00067	<0.00067	<0.00067	<0.00067	<0.00067	<0.00067	0.000319	0.000603	<0.00067
SS-11 @ 4' (40.440270 / -104.317399)	10/05/21	4	1.6	0.00466	0.000533	<0.00067	<0.00067	<0.00067	0.000565	0.00057	<0.00067	0.000733	<0.00067	<0.00067	0.000835	0.000479	0.000682	<0.00067
FS-01 @ 1.5' (40.440295 / -104.317512)	10/05/21	2	7.8	0.407*	0.278*	0.0325	0.0111	0.00866	0.00177	0.00357	0.00148	0.0703	<0.00335	0.00324	0.169	<0.00335	0.0258*	0.0265
FS-02 @ 1.5' (40.440295 / -104.317454)	10/05/21	2	8.1	0.338*	0.206*	0.0676	0.0131	0.0147*	0.00155	0.00566	0.00215	0.109	<0.00335	0.00514	0.274	<0.00335	<0.00335	0.0402
FS-03 @ 5' (40.440275 / -104.317385)	10/05/21	5.0	6.7	0.0152*	0.0056	0.00218	0.000789	0.000851	0.000557	0.000656	<0.00067	0.0075	<0.00067	0.000394	0.0124	<0.00067	<0.00067	0.00318
FS-04 @ 5.5' (40.440238 / -104.317383)	10/05/21	5.5	2.2	0.00695*	0.0026	0.00159	0.000536	<0.00067	0.000372	0.000456	<0.00067	0.00419	<0.00067	<0.00067	0.00787	<0.00067	<0.00067	0.00167
CS-SS-01 @ 1' (40.440310 / -104.317527)	11/05/21	1	1.3	0.000579	0.000717	<0.00067	<0.00067	<0.00067	<0.00067	<0.00067	<0.00067	0.00417	<0.00067	<0.00067	0.00401	<0.00067	<0.00067	<0.00067
CS-SS-02 @ 1' (40.440310 / -104.317445)	11/05/21	1	2.5	0.000894	<0.00067	<0.00067	<0.00067	<0.00067	<0.00067	<0.00067	<0.00067	0.000312	<0.00067	<0.00067	0.000743	<0.00067	<0.00067	<0.00067
CS-SS-03 @ 1' (40.440298 / -104.317429)	11/05/21	1	13.9	0.786*	0.385*	0.0645	0.00382	0.0131*	0.00394	0.00892	<0.00335	0.135	<0.00335	0.00412	0.276	<0.00335	0.0822*	0.0479
CS-SS-04 @ 1' (40.440283 / -104.317446)	11/05/21	1	4.4	<0.00067	<0.00067	<0.00067	<0.00067	<0.00067	<0.00067	<0.00067	<0.00067	<0.00067	<0.00067	<0.00067	<0.00067	<0.00067	<0.00067	<0.00067
CS-SS-05 @ 1' (40.440284 / -104.317522)	11/05/21	1	3.8	<0.00067	<0.00067	0.000396	0.00119	0.00115	0.000261	0.000649	<0.00067	0.0131	<0.00067	<0.00067	0.00799	<0.00067	<0.00067	0.00322
CS-SS-06 @ 1' (40.440294 / -104.317567)	11/05/21	1	5.5	0.00129	0.000918	<0.00067	<0.00067	<0.00067	<0.00067	<0.00067	<0.00067	0.00226	<0.00067	<0.00067	0.00317	<0.00067	<0.00067	<0.00067
CS-FS-01 @ 2' (40.440294 / -104.317513)	11/05/21	2	6.3	0.000442	0.000453	0.000576	0.000498	0.000478	<0.00067	0.000471	<0.00067	0.00798	<0.00067	<0.00067	0.008	<0.00067	<0.00067	0.00146
CS-FS-02 @ 2' (40.440295 / -104.317453)	11/05/21	2	5.7	<0.00067	<0.00067	<0.00067	<0.00067	<0.00067	<0.00067	<0.00067	<0.00067	0.00121	<0.00067	<0.00067	0.00113	<0.00067	<0.00067	<0.00067
CS-FS-03 @ 6' (40.440274 / -104.317384)	11/05/21	6	7.8	0.00276	0.000641	<0.00067	<0.00067	<0.00067	<0.00067	<0.00067	<0.00067	0.00298	<0.00067	<0.00067	0.0043	<0.00067	<0.00067	<0.00067
CS-FS-04 @ 6' (40.440238 / -104.317384)	11/05/21	6	6.8	<0.00067	<0.00067	<0.00067	<0.00067	<0.00067	<0.00067	<0.00067	<0.00067	0.00119	<0.00067	<0.00067	0.000678	<0.00067	<0.00067	<0.00067
CS-SS-07 @ 1' (40.440306 / -104.317388)	12/01/21	1	7.5	0.00448	0.00261	0.00241	0.000673	0.000681	0.000816	<0.00067	<0.00067	0.0077	0.00104	<0.00067	0.014	<0.00067	<0.00067	0.00316
CS-SS-08 @ 7.5' (40.440272 / -104.317399)	12/01/21	7.5	2.3	0.0388*	0.0266*	0.00491	0.00212	0.000768	0.000896	0.000438	<0.00067	0.00942	0.000808	0.000713	0.0214	<0.00067	0.0159	0.00482
CS-SS-09 @ 7.5' (40.440301 / -104.317386)	12/01/21	7.5	9.6	<0.00067	<0.00067	<0.00067	<0.00067	<0.00067	0.000288	<0.00067	<0.00067	0.00129	<0.00067	<0.00067	0.00125	<0.00067	<0.00067	<0.00067
CS-SS-10 @ 7.5' (40.440277 / -104.317371)	12/01/21	7.5	1.4	0.00106	<0.00067	<0.00067	<0.00067	<0.00067	<0.00067	<0.00067	<0.00067	0.00129	<0.00067	<0.00067	0.00126	<0.00067	<0.00067	<0.00067
CS-FS-05 @ 8.5' (40.440274 / -104.317384)	12/01/21	8.5	5.6	0.148*	0.0484*	0.0115	0.00295	0.00196	0.00133	0.0011	<0.00067	0.0177	0.00113	0.000821	0.0477	<0.00067	0.00302	0.00835

TABLE 3
PAH ANALYTICAL RESULTS SUMMARY
FIDUCIAL 6-62-34_35 SWSW
OIL RELEASE
40.440320 / -104.317498
SW1/4 SW1/4 SEC.34 T6N R62W 6PM
WELD COUNTY, COLORADO
LOCATION ID 436863
REMEDATION # 21699

Sample Location (Latitude/Longitude)	Date	Approximate Depth (feet)	PID Reading (ppm-v)	1-Methyl- naphthalene (mg/kg)	2-Methyl-naphthalene (mg/kg)	Acenaphthene (mg/kg)	Anthracene (mg/kg)	Benzo(a)-anthracene (mg/kg)	Benzo(a)- pyrene (mg/kg)	Benzo(b)- fluoranthene (mg/kg)	Benzo(k)- fluoranthene (mg/kg)	Chrysene (mg/kg)	Dibenzo(a,h)- anthracene (mg/kg)	Fluoranthene (mg/kg)	Fluorene (mg/kg)	Ieno(1,2,3- cd)-pyrene (mg/kg)	Naphthalene (mg/kg)	Pyrene (mg/kg)
COGCC Table 915-1 Residential Screening Levels				18	24	360	1,800	1.1	0.11	1.1	11	110	0.11	240	240	1.1	2	180
COGCC Table 915-1 Protection of Groundwater Soil Screening Levels				0.006	0.019	0.55	5.8	0.011	0.24	0.3	2.9	9	0.096	8.9	0.54	0.98	0.0038	1.3
SB-01 @ 5-7.5' (40.440296 / -104.317385)	02/11/22	5-7.5	1.1	<0.00067	<0.00067	<0.00067	<0.00067	<0.00067	<0.00067	<0.00067	<0.00067	<0.00067	<0.00067	<0.00067	<0.00067	<0.00067	<0.00067	<0.00067
SB-01 @ 7.5-10' (40.440296 / -104.317385)	02/11/22	7.5-10	0.6	<0.00067	<0.00067	<0.00067	<0.00067	<0.00067	<0.00067	<0.00067	<0.00067	<0.00067	<0.00067	<0.00067	<0.00067	<0.00067	<0.00067	<0.00067
SB-01 @ 10-12.5' (40.440296 / -104.317385)	02/11/22	10-12.5	1.4	<0.00067	<0.00067	<0.00067	<0.00067	<0.00067	<0.00067	<0.00067	<0.00067	<0.00067	<0.00067	<0.00067	<0.00067	<0.00067	<0.00067	<0.00067
SB-01 @ 17.5-20' (40.440296 / -104.317385)	02/11/22	17.5-20	1.6	<0.00067	<0.00067	<0.00067	<0.00067	<0.00067	<0.00067	<0.00067	<0.00067	<0.00067	<0.00067	<0.00067	<0.00067	<0.00067	<0.00067	<0.00067
SB-02 @ 5-7.5' (40.440314 / -104.317538)	02/11/22	5-7.5	1.8	<0.00067	<0.00067	<0.00067	<0.00067	<0.00067	<0.00067	<0.00067	<0.00067	<0.00067	<0.00067	<0.00067	<0.00067	<0.00067	<0.00067	<0.00067
SB-02 @ 7.5-10' (40.440314 / -104.317538)	02/11/22	7.5-10	1.7	<0.00067	<0.00067	<0.00067	<0.00067	<0.00067	<0.00067	<0.00067	<0.00067	<0.00067	<0.00067	<0.00067	<0.00067	<0.00067	<0.00067	<0.00067
SB-03 @ 5-7.5' (40.440369 / -104.317343)	02/11/22	5-7.5	1.6	<0.00067	<0.00067	<0.00067	<0.00067	<0.00067	<0.00067	<0.00067	<0.00067	<0.00067	<0.00067	<0.00067	<0.00067	<0.00067	<0.00067	<0.00067
SB-03 @ 7.5-10' (40.440369 / -104.317343)	02/11/22	7.5-10	1.9	<0.00067	<0.00067	<0.00067	<0.00067	<0.00067	<0.00067	<0.00067	<0.00067	<0.00067	<0.00067	<0.00067	<0.00067	<0.00067	<0.00067	<0.00067
SB-04 @ 5-7.5' (40.440153 / -104.317384)	02/11/22	5-7.5	1.0	<0.00067	<0.00067	<0.00067	<0.00067	<0.00067	<0.00067	<0.00067	<0.00067	<0.00067	<0.00067	<0.00067	<0.00067	<0.00067	<0.00067	<0.00067
SB-04 @ 7.5-10' (40.440153 / -104.317384)	02/11/22	7.5-10	1.0	<0.00067	<0.00067	<0.00067	<0.00067	<0.00067	<0.00067	<0.00067	<0.00067	<0.00067	<0.00067	<0.00067	<0.00067	<0.00067	<0.00067	<0.00067
SB-05 @ 5-7.5' (40.440173 / -104.317546)	02/11/22	5-7.5	1.1	<0.00067	<0.00067	<0.00067	<0.00067	<0.00067	<0.00067	<0.00067	<0.00067	<0.00067	<0.00067	<0.00067	<0.00067	<0.00067	<0.00067	<0.00067
SB-05 @ 7.5-10' (40.440173 / -104.317546)	02/11/22	7.5-10	1.3	<0.00067	<0.00067	<0.00067	<0.00067	<0.00067	<0.00067	<0.00067	<0.00067	<0.00067	<0.00067	<0.00067	<0.00067	<0.00067	<0.00067	<0.00067
COGCC = Colorado Oil and Gas Conservation Commission mg/kg = milligrams per kilogram ppm-v = parts per million by volume Note: Values presented with a less than symbol (<) did not contain concentrations at or above the laboratory reporting and/or minimum detection limits. Note: Values presented in BOLD contained concentrations exceeding applicable COGCC Table 915-1 Regulatory Limits Note: Values presented in BOLD with * contained concentrations exceeding applicable COGCC Table 915-1 "Protection of Groundwater Soil Screening Levels"																		



ATTACHMENT A

Soil Boring Logs / Well Completion Diagram

PAGE 1 OF 1

START/COMPLETION DATE: 02/11/22		SAND PACK INTERVAL (FEET): 5-25
PROJECT: FIDUCIAL 6-62-34_35 SWSW		BENTONITE/GROUT INTERVAL (FEET): 0-5
LOGGED BY: B. WILKERSON		WELL SCREEN INTERVAL (FEET): 7-25
DRILLING COMPANY/EQUIPMENT: EAGLE/GEOPROBE		WELL DIAMETER (INCHES): 1
BORING DEPTH (FEET): 25	WELL DEPTH (FEET): 25	
PID INSTRUMENT: MiniRAE 3000 - PID #10		
TIME STARTED/COMPLETED: 1120/1142		
SAMPLE COLLECTION DEPTH (FT.)/TIME: 5-7.5/1126, 7.5-10/1127 10-12.5/1131, 17.5-20/1140		

PAGE 1 OF 1

DP - Direct Push
HC - Hydrocarbon
BoB - Bottom of Boring
N/O - no odor
N/S - no staining
TOC - top of casing
bgs - below ground
surface

EAGLE
ENVIRONMENTAL
CONSULTING, INC.

8000 W 44th Ave., Wheat Ridge, CO 80033
Ph: 303-433-0479 • F: 303-325-5449

PAGE 1 OF 1

DP - Direct Push
HC - Hydrocarbon
BoB - Bottom of Boring
N/O - no odor
N/S - no staining
TOC - top of casing
bgs - below ground
surface

EAGLE
ENVIRONMENTAL
CONSULTING, INC.


8000 W 44th Ave., Wheat Ridge, CO 80033
Ph: 303-433-0479 • F: 303-325-5449

Boring Log/Well Completion Diagram: SB-04

PAGE 1 OF 1

DEPTH (FT)	LITHOLOGY	SAMPLE				OVM/OVA (PPM)	BLOW COUNT (per 0.5 FT)	DEPTH (FT)	WELL CONSTRUCTION DETAIL	COMMENTS
	DESCRIPTION	GRAPHIC LOG	TYPE	NUMBER	RECOVERY %					
0	(0-5') sandy CLAY - brown, dry, stiff, low plasticity, poorly-graded with ~30% fine-grain sand, N/O, N/S	CL	DP	1	90	0.3	N/A			
						0.6				
5	(5-10') clayey SAND - light brown, dry, medium dense to very hard, fine grain, poorly-graded with ~25% clay, N/O, N/S	SC	DP	2	80	1.0	N/A	5		
						1.0				
10	BoB @ 10'							10		
15								15		
20								20		
25								25		
30										

DP - Direct Push
HC - Hydrocarbon
BoB - Bottom of Boring
N/O - no odor
N/S - no staining
TOC - top of casing
bgs - below ground surface

START/COMPLETION DATE: 02/11/22		SAND PACK INTERVAL (FEET): N/A	
PROJECT: FIDUCIAL 6-62-34_35 SWSW		BENTONITE/GROUT INTERVAL (FEET): N/A	
LOGGED BY: B. WILKERSON		WELL SCREEN INTERVAL (FEET): N/A	
DRILLING COMPANY/EQUIPMENT: EAGLE/GEOPROBE		WELL DIAMETER (INCHES): N/A	
BORING DEPTH (FEET): 10	WELL DEPTH (FEET): N/A		
PID INSTRUMENT: MiniRAE 3000 – PID #10			
TIME STARTED/COMPLETED: 1216/1225			
SAMPLE COLLECTION DEPTH (FT.)/TIME: 5-7.5/1221, 7.5-10/1222			
<div><div></div><div><div>EAGLE</div><div>ENVIRONMENTAL CONSULTING, INC.</div><div>8000 W 44th Ave., Wheat Ridge, CO 80033 Ph: 303-433-0479 • F: 303-325-5449</div></div></div>			

PAGE 1 OF 1

DP - Direct Push
HC - Hydrocarbon
BoB - Bottom of Boring
N/O - no odor
N/S - no staining
TOC - top of casing
bgs - below ground
surface

EAGLE
ENVIRONMENTAL
CONSULTING, INC.

8000 W 44th Ave., Wheat Ridge, CO 80033
Ph: 303-433-0479 • F: 303-325-5449



ATTACHMENT B

Laboratory Analytical Report



March 02, 2022

Eagle Environmental Consulting, Inc.

Martin C Eckert III

8000 W 44th Ave

Wheat Ridge CO 80033

**Project Name - Bonanza - Fiducial
6-62-34_35SWSW**

Project Number - -

Attached are your analytical results for Bonanza - Fiducial 6-62-34_35SWSW received by Origins Laboratory, Inc. February 11, 2022. This project is associated with Origins project number Y202268-01.

The analytical results in the following report were analyzed under the guidelines of EPA Methods. These methods are identified as follows; "SW" are defined in SW-846, "EPA" are defined in 40CFR part 136 and "SM" are defined in the most current revision of Standard Methods For the Examination of Water and Wastewater.

The analytical results apply specifically to the samples and analyses specified per the attached Chain of Custody. As such, this report shall not be reproduced except in full, without the written approval of Origin's laboratory.

Unless otherwise noted, the analytical results for all soil samples are reported on a wet weight basis. All analytical analyses were performed under NELAP guidelines unless noted by a data qualifier.

Any holding time exceedances, deviations from the method specifications or deviations from Origins Laboratory's Standard Operating Procedures are outlined in the case narrative.

Thank you for selecting Origins for your analytical needs. Please contact us with any questions concerning this report, or if we can help with anything at all.

Origins Laboratory, Inc.
303.433.1322
o-squad@oelabinc.com



1725 Elk Place, Denver, CO 80211 | Phone: 303.433.1322 | Fax: 303.265.9645

Eagle Environmental Consulting, Inc.

8000 W 44th Ave

Wheat Ridge CO 80033

Martin C Eckert III

Project Number: -

Project: Bonanza - Fiducial 6-62-34_35SWSW

CROSS REFERENCE REPORT

Sample ID	Laboratory ID	Matrix	Date Sampled	Date Received
SB-01@5-7.5'	Y202268-01	Soil	February 11, 2022 11:26	02/11/2022 15:08
SB-01@7.5-10'	Y202268-02	Soil	February 11, 2022 11:27	02/11/2022 15:08
SB-01@10-12.5'	Y202268-03	Soil	February 11, 2022 11:31	02/11/2022 15:08
SB-01@17.5-20'	Y202268-04	Soil	February 11, 2022 11:40	02/11/2022 15:08
SB-02@5-7.5'	Y202268-05	Soil	February 11, 2022 11:50	02/11/2022 15:08
SB-02@7.5-10'	Y202268-06	Soil	February 11, 2022 11:51	02/11/2022 15:08
SB-03@5-7.5'	Y202268-07	Soil	February 11, 2022 12:06	02/11/2022 15:08
SB-03@7.5-10'	Y202268-08	Soil	February 11, 2022 12:07	02/11/2022 15:08
SB-04@5-7.5'	Y202268-09	Soil	February 11, 2022 12:21	02/11/2022 15:08
SB-04@7.5-10'	Y202268-10	Soil	February 11, 2022 12:22	02/11/2022 15:08
SB-05@5-7.5'	Y202268-11	Soil	February 11, 2022 12:30	02/11/2022 15:08
SB-05@7.5-10'	Y202268-12	Soil	February 11, 2022 12:31	02/11/2022 15:08

Origins Laboratory, Inc.



The results in this report apply to the samples analyzed in accordance with the chain of custody document. This analytical report must be reproduced in its entirety.

Eagle Environmental Consulting, Inc.
8000 W 44th Ave
Wheat Ridge CO 80033

Martin C Eckert III
Project Number: -
Project: Bonanza - Fiducial 6-62-34_35SWSW

ORIGINS

LABORATORY, INC

www.originslaboratory.com

page 1 of 2

Client: Eagle Environmental Consulting
Address: 8000 W 44th Ave
Wheat Ridge, CO 80033
Telephone Number: 303-4133-0474
Email Address: jmc@eagle-env.com

Project Manager: Martin Eckert III
Project Name: Fiducial 6-62-34_35 SWSW
Project Number: -
Samples Collected By: BAW

Fax: 303.265.9645

Phone: 303.433.1322

Denver, CO 80211

1725 Elk Place

Sample ID Description	Date Sampled	Time Sampled	# of Containers	Preservative				Matrix			Analysis	Sample Instructions
				Unpreserved	HCl	HNO ₃	Groundwater	Soil	Air Summa	Other		
SB-01@5-75'	2/11/22	1126	2	X				X			Aspartic Acid, Glutamic Acid, Lysine, Proline, Serine, Threonine, Valine	1
SB-01@75-10'		1127	1									2
SB-01@10-12.5'		1131	1									3
SB-01@12.5-20'		1140	1									4
SB-02@5-75'		1150	1									5
SB-02@75-10'		1151	1									6
SB-03@5-75'		1206	1									7
SB-03@75-10'		1207	1									8
SB-04@5-75'		1221	1									9
SB-04@75-10'		1222	1									10

Relinquished By:	Date:	Time:	Received By:	Date:	Time:	Turnaround Time:
Byrne M	2/11/22	1508	[Signature]	2/11/22	1508	Same Day <input type="checkbox"/> 24 Hr <input type="checkbox"/> 48 Hr <input type="checkbox"/> 72 Hr <input checked="" type="checkbox"/> Standard

★ Bill to Luke
Bonanza 4.2° Date Results Needed

Origins Laboratory, Inc.

Jordan A. Merrill

The results in this report apply to the samples analyzed in accordance with the chain of custody document. This analytical report must be reproduced in its entirety.

Eagle Environmental Consulting, Inc.
8000 W 44th Ave
Wheat Ridge CO 80033

Martin C Eckert III
Project Number: -
Project: Bonanza - Fiducial 6-62-34_35SWSW

Origins Laboratory

F-012207-01-R1
Effective Date: 01/09/12

Sample Receipt Checklist

Origins Work Order: 1202268

Client: Eagle

Client Project ID: Fiducial 6-62-34-35

Checklist Completed by: JM

Shipped Via: _____
(UPS, FedEx, Hand Delivered, Pick-up, etc.)

Date/time completed: 2/11/22

Airbill #: _____

Matrix(s) Received: (Check all that apply): ☒ Soil/Solid ☐ Water ☐ Other: _____

Cooler Number/Temperature: 1 42 °C 1 °C 1 °C (Describe) °C

Thermometer ID: T003

Requirement Description	Yes	No	N/A	Comments (if any)
If samples require cooling, was the temperature between 0°C to ≤ 6°C ⁽¹⁾ ?	<input checked="" type="checkbox"/>	<input type="checkbox"/>	<input type="checkbox"/>	
Is there ice present (document if blue ice is used)	<input checked="" type="checkbox"/>	<input type="checkbox"/>	<input type="checkbox"/>	
Are custody seals present on cooler? (if so, document in comments if they are signed and dated, broken or intact)	<input checked="" type="checkbox"/>	<input type="checkbox"/>	<input type="checkbox"/>	
Are custody seals present on each sample container? (if so, document in comments if they are signed and dated, broken or intact)	<input checked="" type="checkbox"/>	<input type="checkbox"/>	<input type="checkbox"/>	
Were all samples received intact ⁽¹⁾ ?	<input checked="" type="checkbox"/>	<input type="checkbox"/>	<input type="checkbox"/>	
Was adequate sample volume provided ⁽¹⁾ ?	<input checked="" type="checkbox"/>	<input type="checkbox"/>	<input type="checkbox"/>	
Are short holding time analytes or samples with HTs due within 48 hours present ⁽¹⁾ ?	<input checked="" type="checkbox"/>	<input type="checkbox"/>	<input type="checkbox"/>	
Is a chain-of-custody (COC) present and filled out completely ⁽¹⁾ ?	<input checked="" type="checkbox"/>	<input type="checkbox"/>	<input type="checkbox"/>	
Does the COC agree with the number and type of sample bottles received ⁽¹⁾ ?	<input checked="" type="checkbox"/>	<input type="checkbox"/>	<input type="checkbox"/>	
Do the sample IDs on the bottle labels match the COC ⁽¹⁾ ?	<input checked="" type="checkbox"/>	<input type="checkbox"/>	<input type="checkbox"/>	
Is the COC properly relinquished by the client with date and time recorded ⁽¹⁾ ?	<input checked="" type="checkbox"/>	<input type="checkbox"/>	<input type="checkbox"/>	
For volatiles in water – is there headspace (> ¼ inch bubble) present? If yes, contact client and note in narrative.	<input checked="" type="checkbox"/>	<input type="checkbox"/>	<input type="checkbox"/>	
Are samples preserved that require preservation and was it checked ⁽¹⁾ ? (note ID of confirmation instrument used in comments) / (preservation is not confirmed for subcontracted analyses in order to insure sample integrity)/(pH <2 for samples preserved with HNO ₃ , HCL, H ₂ SO ₄) / (pH >10 for samples preserved with NaAsO ₂ +NaOH, ZnAc+NaOH)	<input checked="" type="checkbox"/>	<input type="checkbox"/>	<input type="checkbox"/>	
Additional Comments (if any):				

⁽¹⁾ If NO, then contact the client before proceeding with analysis and note date/time and person contacted as well as the corrective action to in the additional comments (above) and the case narrative.

Reviewed by (Project Manager) JM

2-14-22
Date/Time Reviewed

Origins Laboratory, Inc.

Jordan A. Merrill

The results in this report apply to the samples analyzed in accordance with the chain of custody document. This analytical report must be reproduced in its entirety.

Eagle Environmental Consulting, Inc.
8000 W 44th Ave
Wheat Ridge CO 80033

Martin C Eckert III
Project Number: -
Project: Bonanza - Fiducial 6-62-34_35SWSW

SB-01@5-7.5'

2/11/2022 11:26:00AM

Analyte	Result	Reporting Limit	Units	Dilution	Batch	Analyst	Prepared	Analyzed	Notes
---------	--------	-----------------	-------	----------	-------	---------	----------	----------	-------

Y202268-01 (Soil)
Origins Laboratory, Inc.

DRO/ORO by EPA 8015D

Diesel (C10-C28)	ND	25.0	mg/kg	1	B2B1119	ZZZ	02/11/2022	02/15/2022	U
Residual Range Organics (C28-C40)	ND	100	"	"	"	ZZZ	"	"	U

Surrogate: o-Terphenyl 76.2 % 50-150 " " "

GBTEX+TMBs by 8260D

1,2,4-Trimethylbenzene	ND	0.00200	mg/kg	1	B2B1903	ZZZ	02/19/2022	02/19/2022	U
1,3,5-Trimethylbenzene	ND	0.00200	"	"	"	ZZZ	"	"	U
Benzene	ND	0.00200	"	"	"	ZZZ	"	"	U
Ethylbenzene	ND	0.00200	"	"	"	ZZZ	"	"	U
Toluene	ND	0.00200	"	"	"	ZZZ	"	"	U
Xylenes, total	ND	0.00200	"	"	"	ZZZ	"	"	U
Gasoline Range Hydrocarbons	ND	0.200	"	"	"	ZZZ	"	"	U

Surrogate: 1,2-Dichloroethane-d4 118 % 70-130 " " "
Surrogate: Toluene-d8 101 % 70-130 " " "
Surrogate: 4-Bromofluorobenzene 100 % 70-130 " " "

Waypoint Analytical, Inc.

PAH by 8270D SIM

1-Methylnaphthalene	ND	0.00067	mg/Kg	1	L599362		02/14/2022	02/16/2022	
---------------------	----	---------	-------	---	---------	--	------------	------------	--

Origins Laboratory, Inc.

The results in this report apply to the samples analyzed in accordance with the chain of custody document. This analytical report must be reproduced in its entirety.

Eagle Environmental Consulting, Inc.
8000 W 44th Ave
Wheat Ridge CO 80033

Martin C Eckert III
Project Number: -
Project: Bonanza - Fiducial 6-62-34_35SWSW

SB-01@5-7.5'

2/11/2022 11:26:00AM

Analyte	Result	Reporting Limit	Units	Dilution	Batch	Analyst	Prepared	Analyzed	Notes
---------	--------	-----------------	-------	----------	-------	---------	----------	----------	-------

Y202268-01 (Soil)

Waypoint Analytical, Inc.

PAH by 8270D SIM

2-Methylnaphthalene	ND	0.00067	mg/Kg	1	L599362		02/14/2022	02/16/2022	
Acenaphthene	ND	0.00067	"	"	"		"	"	
Anthracene	ND	0.00067	"	"	"		"	"	
Benzo(a)anthracene	ND	0.00067	"	"	"		"	"	
Benzo(a)pyrene	ND	0.00067	"	"	"		"	"	
Benzo(b)fluoranthene	ND	0.00067	"	"	"		"	"	
Benzo(k)fluoranthene	ND	0.00067	"	"	"		"	"	
Chrysene	ND	0.00067	"	"	"		"	"	
Dibenz(a,h)anthracene	ND	0.00067	"	"	"		"	"	
Fluoranthene	ND	0.00067	"	"	"		"	"	
Fluorene	ND	0.00067	"	"	"		"	"	
Indeno(1,2,3-cd)pyrene	ND	0.00067	"	"	"		"	"	
Naphthalene	ND	0.00067	"	"	"		"	"	
Pyrene	ND	0.00067	"	"	"		"	"	
Surrogate: 2-Fluorobiphenyl	54.2 %	33-115			"		"	"	
Surrogate: 4-Terphenyl-d14	59.7 %	33-122			"		"	"	
Surrogate: Nitrobenzene-d5	52.4 %	29-110			"		"	"	

Origins Laboratory, Inc.



The results in this report apply to the samples analyzed in accordance with the chain of custody document. This analytical report must be reproduced in its entirety.

Eagle Environmental Consulting, Inc.
8000 W 44th Ave
Wheat Ridge CO 80033

Martin C Eckert III
Project Number: -
Project: Bonanza - Fiducial 6-62-34_35SWSW

SB-01@7.5-10'

2/11/2022 11:27:00AM

Analyte	Result	Reporting Limit	Units	Dilution	Batch	Analyst	Prepared	Analyzed	Notes
---------	--------	-----------------	-------	----------	-------	---------	----------	----------	-------

Y202268-02 (Soil)
Origins Laboratory, Inc.

DRO/ORO by EPA 8015D

Diesel (C10-C28)	ND	25.0	mg/kg	1	B2B1119	ZZZ	02/11/2022	02/15/2022	U
Residual Range Organics (C28-C40)	ND	100	"	"	"	ZZZ	"	"	U

Surrogate: o-Terphenyl 76.5 % 50-150 " "

GBTEX+TMBs by 8260D

1,2,4-Trimethylbenzene	ND	0.00200	mg/kg	1	B2B1903	ZZZ	02/19/2022	02/19/2022	U
1,3,5-Trimethylbenzene	ND	0.00200	"	"	"	ZZZ	"	"	U
Benzene	ND	0.00200	"	"	"	ZZZ	"	"	U
Ethylbenzene	ND	0.00200	"	"	"	ZZZ	"	"	U
Toluene	ND	0.00200	"	"	"	ZZZ	"	"	U
Xylenes, total	ND	0.00200	"	"	"	ZZZ	"	"	U
Gasoline Range Hydrocarbons	ND	0.200	"	"	"	ZZZ	"	"	U

Surrogate: 1,2-Dichloroethane-d4 140 % 70-130 " " S-07
Surrogate: Toluene-d8 102 % 70-130 " "
Surrogate: 4-Bromofluorobenzene 102 % 70-130 " "

Waypoint Analytical, Inc.

PAH by 8270D SIM

1-Methylnaphthalene	ND	0.00067	mg/Kg	1	L599362		02/14/2022	02/16/2022	
---------------------	----	---------	-------	---	---------	--	------------	------------	--

Origins Laboratory, Inc.

The results in this report apply to the samples analyzed in accordance with the chain of custody document. This analytical report must be reproduced in its entirety.

Eagle Environmental Consulting, Inc.
8000 W 44th Ave
Wheat Ridge CO 80033

Martin C Eckert III
Project Number: -
Project: Bonanza - Fiducial 6-62-34_35SWSW

SB-01@7.5-10'

2/11/2022 11:27:00AM

Analyte	Result	Reporting Limit	Units	Dilution	Batch	Analyst	Prepared	Analyzed	Notes
---------	--------	-----------------	-------	----------	-------	---------	----------	----------	-------

Y202268-02 (Soil)
Waypoint Analytical, Inc.

PAH by 8270D SIM

2-Methylnaphthalene	ND	0.00067	mg/Kg	1	L599362		02/14/2022	02/16/2022	
Acenaphthene	ND	0.00067	"	"	"		"	"	
Anthracene	ND	0.00067	"	"	"		"	"	
Benzo(a)anthracene	ND	0.00067	"	"	"		"	"	
Benzo(a)pyrene	ND	0.00067	"	"	"		"	"	
Benzo(b)fluoranthene	ND	0.00067	"	"	"		"	"	
Benzo(k)fluoranthene	ND	0.00067	"	"	"		"	"	
Chrysene	ND	0.00067	"	"	"		"	"	
Dibenz(a,h)anthracene	ND	0.00067	"	"	"		"	"	
Fluoranthene	ND	0.00067	"	"	"		"	"	
Fluorene	ND	0.00067	"	"	"		"	"	
Indeno(1,2,3-cd)pyrene	ND	0.00067	"	"	"		"	"	
Naphthalene	ND	0.00067	"	"	"		"	"	
Pyrene	ND	0.00067	"	"	"		"	"	
Surrogate: 2-Fluorobiphenyl	57 %	33-115			"		"	"	
Surrogate: 4-Terphenyl-d14	57.9 %	33-122			"		"	"	
Surrogate: Nitrobenzene-d5	52.7 %	29-110			"		"	"	

Origins Laboratory, Inc.

The results in this report apply to the samples analyzed in accordance with the chain of custody document. This analytical report must be reproduced in its entirety.

Eagle Environmental Consulting, Inc.
8000 W 44th Ave
Wheat Ridge CO 80033

Martin C Eckert III
Project Number: -
Project: Bonanza - Fiducial 6-62-34_35SWSW

SB-01@10-12.5'
2/11/2022 11:31:00AM

Analyte	Result	Reporting Limit	Units	Dilution	Batch	Analyst	Prepared	Analyzed	Notes
---------	--------	-----------------	-------	----------	-------	---------	----------	----------	-------

Y202268-03 (Soil)
Origins Laboratory, Inc.

DRO/ORO by EPA 8015D

Diesel (C10-C28)	ND	25.0	mg/kg	1	B2B1119	ZZZ	02/11/2022	02/15/2022	U
Residual Range Organics (C28-C40)	ND	100	"	"	"	ZZZ	"	"	U

Surrogate: o-Terphenyl 76.9 % 50-150 " " "

GBTEX+TMBs by 8260D

1,2,4-Trimethylbenzene	ND	0.00200	mg/kg	1	B2B1903	ZZZ	02/19/2022	02/19/2022	U
1,3,5-Trimethylbenzene	ND	0.00200	"	"	"	ZZZ	"	"	U
Benzene	ND	0.00200	"	"	"	ZZZ	"	"	U
Ethylbenzene	ND	0.00200	"	"	"	ZZZ	"	"	U
Toluene	ND	0.00200	"	"	"	ZZZ	"	"	U
Xylenes, total	ND	0.00200	"	"	"	ZZZ	"	"	U
Gasoline Range Hydrocarbons	ND	0.200	"	"	"	ZZZ	"	"	U

Surrogate: 1,2-Dichloroethane-d4 124 % 70-130 " " "
Surrogate: Toluene-d8 100 % 70-130 " " "
Surrogate: 4-Bromofluorobenzene 99.3 % 70-130 " " "

Waypoint Analytical, Inc.

PAH by 8270D SIM

1-Methylnaphthalene	ND	0.00067	mg/Kg	1	L599362		02/14/2022	02/16/2022	
---------------------	----	---------	-------	---	---------	--	------------	------------	--

Origins Laboratory, Inc.

The results in this report apply to the samples analyzed in accordance with the chain of custody document. This analytical report must be reproduced in its entirety.

Eagle Environmental Consulting, Inc.
8000 W 44th Ave
Wheat Ridge CO 80033

Martin C Eckert III
Project Number: -
Project: Bonanza - Fiducial 6-62-34_35SWSW

SB-01@10-12.5'

2/11/2022 11:31:00AM

Analyte	Result	Reporting Limit	Units	Dilution	Batch	Analyst	Prepared	Analyzed	Notes
---------	--------	-----------------	-------	----------	-------	---------	----------	----------	-------

Y202268-03 (Soil)

Waypoint Analytical, Inc.

PAH by 8270D SIM

2-Methylnaphthalene	ND	0.00067	mg/Kg	1	L599362		02/14/2022	02/16/2022
Acenaphthene	ND	0.00067	"	"	"		"	"
Anthracene	ND	0.00067	"	"	"		"	"
Benzo(a)anthracene	ND	0.00067	"	"	"		"	"
Benzo(a)pyrene	ND	0.00067	"	"	"		"	"
Benzo(b)fluoranthene	ND	0.00067	"	"	"		"	"
Benzo(k)fluoranthene	ND	0.00067	"	"	"		"	"
Chrysene	ND	0.00067	"	"	"		"	"
Dibenz(a,h)anthracene	ND	0.00067	"	"	"		"	"
Fluoranthene	ND	0.00067	"	"	"		"	"
Fluorene	ND	0.00067	"	"	"		"	"
Indeno(1,2,3-cd)pyrene	ND	0.00067	"	"	"		"	"
Naphthalene	ND	0.00067	"	"	"		"	"
Pyrene	ND	0.00067	"	"	"		"	"

Surrogate: 2-Fluorobiphenyl	55.3 %	33-115	"	"	"
Surrogate: 4-Terphenyl-d14	56.8 %	33-122	"	"	"
Surrogate: Nitrobenzene-d5	53.2 %	29-110	"	"	"

Origins Laboratory, Inc.



The results in this report apply to the samples analyzed in accordance with the chain of custody document. This analytical report must be reproduced in its entirety.

Eagle Environmental Consulting, Inc.
8000 W 44th Ave
Wheat Ridge CO 80033

Martin C Eckert III
Project Number: -
Project: Bonanza - Fiducial 6-62-34_35SWSW

SB-01@17.5-20'

2/11/2022 11:40:00AM

Analyte	Result	Reporting Limit	Units	Dilution	Batch	Analyst	Prepared	Analyzed	Notes
---------	--------	-----------------	-------	----------	-------	---------	----------	----------	-------

Y202268-04 (Soil)
Origins Laboratory, Inc.

DRO/ORO by EPA 8015D

Diesel (C10-C28)	ND	25.0	mg/kg	1	B2B1119	ZZZ	02/11/2022	02/15/2022	U
Residual Range Organics (C28-C40)	ND	100	"	"	"	ZZZ	"	"	U

Surrogate: o-Terphenyl 77.4 % 50-150 " " "

GBTEX+TMBs by 8260D

1,2,4-Trimethylbenzene	ND	0.00200	mg/kg	1	B2B1903	ZZZ	02/19/2022	02/19/2022	U
1,3,5-Trimethylbenzene	ND	0.00200	"	"	"	ZZZ	"	"	U
Benzene	ND	0.00200	"	"	"	ZZZ	"	"	U
Ethylbenzene	ND	0.00200	"	"	"	ZZZ	"	"	U
Toluene	ND	0.00200	"	"	"	ZZZ	"	"	U
Xylenes, total	ND	0.00200	"	"	"	ZZZ	"	"	U
Gasoline Range Hydrocarbons	ND	0.200	"	"	"	ZZZ	"	"	U

Surrogate: 1,2-Dichloroethane-d4 124 % 70-130 " " "
Surrogate: Toluene-d8 99.2 % 70-130 " " "
Surrogate: 4-Bromofluorobenzene 101 % 70-130 " " "

Waypoint Analytical, Inc.

PAH by 8270D SIM

1-Methylnaphthalene	ND	0.00067	mg/Kg	1	L599362		02/14/2022	02/16/2022	
---------------------	----	---------	-------	---	---------	--	------------	------------	--

Origins Laboratory, Inc.

The results in this report apply to the samples analyzed in accordance with the chain of custody document. This analytical report must be reproduced in its entirety.

Eagle Environmental Consulting, Inc.
8000 W 44th Ave
Wheat Ridge CO 80033

Martin C Eckert III
Project Number: -
Project: Bonanza - Fiducial 6-62-34_35SWSW

SB-01@17.5-20'

2/11/2022 11:40:00AM

Analyte	Result	Reporting Limit	Units	Dilution	Batch	Analyst	Prepared	Analyzed	Notes
---------	--------	-----------------	-------	----------	-------	---------	----------	----------	-------

Y202268-04 (Soil)

Waypoint Analytical, Inc.

PAH by 8270D SIM

2-Methylnaphthalene	ND	0.00067	mg/Kg	1	L599362		02/14/2022	02/16/2022	
Acenaphthene	ND	0.00067	"	"	"		"	"	
Anthracene	ND	0.00067	"	"	"		"	"	
Benzo(a)anthracene	ND	0.00067	"	"	"		"	"	
Benzo(a)pyrene	ND	0.00067	"	"	"		"	"	
Benzo(b)fluoranthene	ND	0.00067	"	"	"		"	"	
Benzo(k)fluoranthene	ND	0.00067	"	"	"		"	"	
Chrysene	ND	0.00067	"	"	"		"	"	
Dibenz(a,h)anthracene	ND	0.00067	"	"	"		"	"	
Fluoranthene	ND	0.00067	"	"	"		"	"	
Fluorene	ND	0.00067	"	"	"		"	"	
Indeno(1,2,3-cd)pyrene	ND	0.00067	"	"	"		"	"	
Naphthalene	ND	0.00067	"	"	"		"	"	
Pyrene	ND	0.00067	"	"	"		"	"	
Surrogate: 2-Fluorobiphenyl	56.5 %	33-115			"		"	"	
Surrogate: 4-Terphenyl-d14	58.3 %	33-122			"		"	"	
Surrogate: Nitrobenzene-d5	54.4 %	29-110			"		"	"	

Origins Laboratory, Inc.

The results in this report apply to the samples analyzed in accordance with the chain of custody document. This analytical report must be reproduced in its entirety.

Eagle Environmental Consulting, Inc.
8000 W 44th Ave
Wheat Ridge CO 80033

Martin C Eckert III
Project Number: -
Project: Bonanza - Fiducial 6-62-34_35SWSW

SB-02@5-7.5'

2/11/2022 11:50:00AM

Analyte	Result	Reporting Limit	Units	Dilution	Batch	Analyst	Prepared	Analyzed	Notes
---------	--------	-----------------	-------	----------	-------	---------	----------	----------	-------

Y202268-05 (Soil)
Origins Laboratory, Inc.

DRO/ORO by EPA 8015D

Diesel (C10-C28)	ND	25.0	mg/kg	1	B2B1119	ZZZ	02/11/2022	02/15/2022	U
Residual Range Organics (C28-C40)	ND	100	"	"	"	ZZZ	"	"	U

Surrogate: o-Terphenyl 74.7 % 50-150 " " "

GBTEX+TMBs by 8260D

1,2,4-Trimethylbenzene	ND	0.00200	mg/kg	1	B2B1903	ZZZ	02/19/2022	02/19/2022	U
1,3,5-Trimethylbenzene	ND	0.00200	"	"	"	ZZZ	"	"	U
Benzene	ND	0.00200	"	"	"	ZZZ	"	"	U
Ethylbenzene	ND	0.00200	"	"	"	ZZZ	"	"	U
Toluene	ND	0.00200	"	"	"	ZZZ	"	"	U
Xylenes, total	0.00704	0.00200	"	"	"	ZZZ	"	"	
Gasoline Range Hydrocarbons	ND	0.200	"	"	"	ZZZ	"	"	U

Surrogate: 1,2-Dichloroethane-d4 127 % 70-130 " " "
Surrogate: Toluene-d8 99.6 % 70-130 " " "
Surrogate: 4-Bromofluorobenzene 96.6 % 70-130 " " "

Waypoint Analytical, Inc.

PAH by 8270D SIM

1-Methylnaphthalene	ND	0.00067	mg/Kg	1	L599362		02/14/2022	02/16/2022	
---------------------	----	---------	-------	---	---------	--	------------	------------	--

Origins Laboratory, Inc.

The results in this report apply to the samples analyzed in accordance with the chain of custody document. This analytical report must be reproduced in its entirety.

Eagle Environmental Consulting, Inc.
8000 W 44th Ave
Wheat Ridge CO 80033

Martin C Eckert III
Project Number: -
Project: Bonanza - Fiducial 6-62-34_35SWSW

SB-02@5-7.5'

2/11/2022 11:50:00AM

Analyte	Result	Reporting Limit	Units	Dilution	Batch	Analyst	Prepared	Analyzed	Notes
---------	--------	-----------------	-------	----------	-------	---------	----------	----------	-------

Y202268-05 (Soil)

Waypoint Analytical, Inc.

PAH by 8270D SIM

2-Methylnaphthalene	ND	0.00067	mg/Kg	1	L599362		02/14/2022	02/16/2022
Acenaphthene	ND	0.00067	"	"	"		"	"
Anthracene	ND	0.00067	"	"	"		"	"
Benzo(a)anthracene	ND	0.00067	"	"	"		"	"
Benzo(a)pyrene	ND	0.00067	"	"	"		"	"
Benzo(b)fluoranthene	ND	0.00067	"	"	"		"	"
Benzo(k)fluoranthene	ND	0.00067	"	"	"		"	"
Chrysene	ND	0.00067	"	"	"		"	"
Dibenz(a,h)anthracene	ND	0.00067	"	"	"		"	"
Fluoranthene	ND	0.00067	"	"	"		"	"
Fluorene	ND	0.00067	"	"	"		"	"
Indeno(1,2,3-cd)pyrene	ND	0.00067	"	"	"		"	"
Naphthalene	ND	0.00067	"	"	"		"	"
Pyrene	ND	0.00067	"	"	"		"	"

Surrogate: 2-Fluorobiphenyl	55.7 %	33-115	"	"	"
Surrogate: 4-Terphenyl-d14	58.1 %	33-122	"	"	"
Surrogate: Nitrobenzene-d5	53.6 %	29-110	"	"	"

Origins Laboratory, Inc.



The results in this report apply to the samples analyzed in accordance with the chain of custody document. This analytical report must be reproduced in its entirety.

Eagle Environmental Consulting, Inc.
8000 W 44th Ave
Wheat Ridge CO 80033

Martin C Eckert III
Project Number: -
Project: Bonanza - Fiducial 6-62-34_35SWSW

SB-02@7.5-10'

2/11/2022 11:51:00AM

Analyte	Result	Reporting Limit	Units	Dilution	Batch	Analyst	Prepared	Analyzed	Notes
---------	--------	-----------------	-------	----------	-------	---------	----------	----------	-------

Y202268-06 (Soil)
Origins Laboratory, Inc.

DRO/ORO by EPA 8015D

Diesel (C10-C28)	ND	25.0	mg/kg	1	B2B1119	ZZZ	02/11/2022	02/15/2022	U
Residual Range Organics (C28-C40)	ND	100	"	"	"	ZZZ	"	"	U

Surrogate: o-Terphenyl 78.9 % 50-150 " " "

GBTEX+TMBs by 8260D

1,2,4-Trimethylbenzene	ND	0.00200	mg/kg	1	B2B1903	ZZZ	02/19/2022	02/20/2022	U
1,3,5-Trimethylbenzene	ND	0.00200	"	"	"	ZZZ	"	"	U
Benzene	ND	0.00200	"	"	"	ZZZ	"	"	U
Ethylbenzene	ND	0.00200	"	"	"	ZZZ	"	"	U
Toluene	ND	0.00200	"	"	"	ZZZ	"	"	U
Xylenes, total	ND	0.00200	"	"	"	ZZZ	"	"	U
Gasoline Range Hydrocarbons	ND	0.200	"	"	"	ZZZ	"	"	U

Surrogate: 1,2-Dichloroethane-d4 129 % 70-130 " " "
Surrogate: Toluene-d8 100 % 70-130 " " "
Surrogate: 4-Bromofluorobenzene 94.5 % 70-130 " " "

Waypoint Analytical, Inc.

PAH by 8270D SIM

1-Methylnaphthalene	ND	0.00067	mg/Kg	1	L599362		02/14/2022	02/16/2022	
---------------------	----	---------	-------	---	---------	--	------------	------------	--

Origins Laboratory, Inc.

The results in this report apply to the samples analyzed in accordance with the chain of custody document. This analytical report must be reproduced in its entirety.

Eagle Environmental Consulting, Inc.
8000 W 44th Ave
Wheat Ridge CO 80033

Martin C Eckert III
Project Number: -
Project: Bonanza - Fiducial 6-62-34_35SWSW

SB-02@7.5-10'

2/11/2022 11:51:00AM

Analyte	Result	Reporting Limit	Units	Dilution	Batch	Analyst	Prepared	Analyzed	Notes
---------	--------	-----------------	-------	----------	-------	---------	----------	----------	-------

Y202268-06 (Soil)
Waypoint Analytical, Inc.

PAH by 8270D SIM

2-Methylnaphthalene	ND	0.00067	mg/Kg	1	L599362		02/14/2022	02/16/2022
Acenaphthene	ND	0.00067	"	"	"		"	"
Anthracene	ND	0.00067	"	"	"		"	"
Benzo(a)anthracene	ND	0.00067	"	"	"		"	"
Benzo(a)pyrene	ND	0.00067	"	"	"		"	"
Benzo(b)fluoranthene	ND	0.00067	"	"	"		"	"
Benzo(k)fluoranthene	ND	0.00067	"	"	"		"	"
Chrysene	ND	0.00067	"	"	"		"	"
Dibenz(a,h)anthracene	ND	0.00067	"	"	"		"	"
Fluoranthene	ND	0.00067	"	"	"		"	"
Fluorene	ND	0.00067	"	"	"		"	"
Indeno(1,2,3-cd)pyrene	ND	0.00067	"	"	"		"	"
Naphthalene	ND	0.00067	"	"	"		"	"
Pyrene	ND	0.00067	"	"	"		"	"

Surrogate: 2-Fluorobiphenyl	55 %	33-115	"	"	"
Surrogate: 4-Terphenyl-d14	58 %	33-122	"	"	"
Surrogate: Nitrobenzene-d5	50.8 %	29-110	"	"	"

Origins Laboratory, Inc.

The results in this report apply to the samples analyzed in accordance with the chain of custody document. This analytical report must be reproduced in its entirety.

Eagle Environmental Consulting, Inc.
8000 W 44th Ave
Wheat Ridge CO 80033

Martin C Eckert III
Project Number: -
Project: Bonanza - Fiducial 6-62-34_35SWSW

SB-03@5-7.5'

2/11/2022 12:06:00PM

Analyte	Result	Reporting Limit	Units	Dilution	Batch	Analyst	Prepared	Analyzed	Notes
---------	--------	-----------------	-------	----------	-------	---------	----------	----------	-------

Y202268-07 (Soil)
Origins Laboratory, Inc.

DRO/ORO by EPA 8015D

Diesel (C10-C28)	ND	25.0	mg/kg	1	B2B1119	ZZZ	02/11/2022	02/15/2022	U
Residual Range Organics (C28-C40)	ND	100	"	"	"	ZZZ	"	"	U

Surrogate: o-Terphenyl 77.7 % 50-150 " " "

GBTEX+TMBs by 8260D

1,2,4-Trimethylbenzene	ND	0.00200	mg/kg	1	B2B1903	ZZZ	02/19/2022	02/20/2022	U
1,3,5-Trimethylbenzene	ND	0.00200	"	"	"	ZZZ	"	"	U
Benzene	ND	0.00200	"	"	"	ZZZ	"	"	U
Ethylbenzene	ND	0.00200	"	"	"	ZZZ	"	"	U
Toluene	ND	0.00200	"	"	"	ZZZ	"	"	U
Xylenes, total	ND	0.00200	"	"	"	ZZZ	"	"	U
Gasoline Range Hydrocarbons	ND	0.200	"	"	"	ZZZ	"	"	U

Surrogate: 1,2-Dichloroethane-d4 131 % 70-130 " " S-07
Surrogate: Toluene-d8 102 % 70-130 " "
Surrogate: 4-Bromofluorobenzene 102 % 70-130 " "

Waypoint Analytical, Inc.

PAH by 8270D SIM

1-Methylnaphthalene	ND	0.00067	mg/Kg	1	L599362		02/14/2022	02/16/2022	
---------------------	----	---------	-------	---	---------	--	------------	------------	--

Origins Laboratory, Inc.

The results in this report apply to the samples analyzed in accordance with the chain of custody document. This analytical report must be reproduced in its entirety.

Eagle Environmental Consulting, Inc.
8000 W 44th Ave
Wheat Ridge CO 80033

Martin C Eckert III
Project Number: -
Project: Bonanza - Fiducial 6-62-34_35SWSW

SB-03@5-7.5'

2/11/2022 12:06:00PM

Analyte	Result	Reporting Limit	Units	Dilution	Batch	Analyst	Prepared	Analyzed	Notes
---------	--------	-----------------	-------	----------	-------	---------	----------	----------	-------

Y202268-07 (Soil)
Waypoint Analytical, Inc.

PAH by 8270D SIM

2-Methylnaphthalene	ND	0.00067	mg/Kg	1	L599362		02/14/2022	02/16/2022	
Acenaphthene	ND	0.00067	"	"	"		"	"	
Anthracene	ND	0.00067	"	"	"		"	"	
Benzo(a)anthracene	ND	0.00067	"	"	"		"	"	
Benzo(a)pyrene	ND	0.00067	"	"	"		"	"	
Benzo(b)fluoranthene	ND	0.00067	"	"	"		"	"	
Benzo(k)fluoranthene	ND	0.00067	"	"	"		"	"	
Chrysene	ND	0.00067	"	"	"		"	"	
Dibenz(a,h)anthracene	ND	0.00067	"	"	"		"	"	
Fluoranthene	ND	0.00067	"	"	"		"	"	
Fluorene	ND	0.00067	"	"	"		"	"	
Indeno(1,2,3-cd)pyrene	ND	0.00067	"	"	"		"	"	
Naphthalene	ND	0.00067	"	"	"		"	"	
Pyrene	ND	0.00067	"	"	"		"	"	

Surrogate: 2-Fluorobiphenyl	54.1 %	33-115	"	"	"
Surrogate: 4-Terphenyl-d14	57.1 %	33-122	"	"	"
Surrogate: Nitrobenzene-d5	49.5 %	29-110	"	"	"

Origins Laboratory, Inc.

The results in this report apply to the samples analyzed in accordance with the chain of custody document. This analytical report must be reproduced in its entirety.

Eagle Environmental Consulting, Inc.
8000 W 44th Ave
Wheat Ridge CO 80033

Martin C Eckert III
Project Number: -
Project: Bonanza - Fiducial 6-62-34_35SWSW

SB-03@7.5-10'
2/11/2022 12:07:00PM

Analyte	Result	Reporting Limit	Units	Dilution	Batch	Analyst	Prepared	Analyzed	Notes
---------	--------	-----------------	-------	----------	-------	---------	----------	----------	-------

Y202268-08 (Soil)
Origins Laboratory, Inc.

DRO/ORO by EPA 8015D

Diesel (C10-C28)	ND	25.0	mg/kg	1	B2B1119	ZZZ	02/11/2022	02/15/2022	U
Residual Range Organics (C28-C40)	ND	100	"	"	"	ZZZ	"	"	U

Surrogate: o-Terphenyl 78.6 % 50-150 " " "

GBTEX+TMBs by 8260D

1,2,4-Trimethylbenzene	ND	0.00200	mg/kg	1	B2B1903	ZZZ	02/19/2022	02/20/2022	U
1,3,5-Trimethylbenzene	ND	0.00200	"	"	"	ZZZ	"	"	U
Benzene	ND	0.00200	"	"	"	ZZZ	"	"	U
Ethylbenzene	ND	0.00200	"	"	"	ZZZ	"	"	U
Toluene	ND	0.00200	"	"	"	ZZZ	"	"	U
Xylenes, total	0.00734	0.00200	"	"	"	ZZZ	"	"	
Gasoline Range Hydrocarbons	ND	0.200	"	"	"	ZZZ	"	"	U

Surrogate: 1,2-Dichloroethane-d4 132 % 70-130 " " " S-GC
Surrogate: Toluene-d8 101 % 70-130 " " "
Surrogate: 4-Bromofluorobenzene 100 % 70-130 " " "

Waypoint Analytical, Inc.

PAH by 8270D SIM

1-Methylnaphthalene	ND	0.00067	mg/Kg	1	L599362		02/14/2022	02/16/2022	
---------------------	----	---------	-------	---	---------	--	------------	------------	--

Origins Laboratory, Inc.



The results in this report apply to the samples analyzed in accordance with the chain of custody document. This analytical report must be reproduced in its entirety.

Eagle Environmental Consulting, Inc.
8000 W 44th Ave
Wheat Ridge CO 80033

Martin C Eckert III
Project Number: -
Project: Bonanza - Fiducial 6-62-34_35SWSW

SB-03@7.5-10'

2/11/2022 12:07:00PM

Analyte	Result	Reporting Limit	Units	Dilution	Batch	Analyst	Prepared	Analyzed	Notes
---------	--------	-----------------	-------	----------	-------	---------	----------	----------	-------

Y202268-08 (Soil)
Waypoint Analytical, Inc.

PAH by 8270D SIM

2-Methylnaphthalene	ND	0.00067	mg/Kg	1	L599362		02/14/2022	02/16/2022
Acenaphthene	ND	0.00067	"	"	"		"	"
Anthracene	ND	0.00067	"	"	"		"	"
Benzo(a)anthracene	ND	0.00067	"	"	"		"	"
Benzo(a)pyrene	ND	0.00067	"	"	"		"	"
Benzo(b)fluoranthene	ND	0.00067	"	"	"		"	"
Benzo(k)fluoranthene	ND	0.00067	"	"	"		"	"
Chrysene	ND	0.00067	"	"	"		"	"
Dibenz(a,h)anthracene	ND	0.00067	"	"	"		"	"
Fluoranthene	ND	0.00067	"	"	"		"	"
Fluorene	ND	0.00067	"	"	"		"	"
Indeno(1,2,3-cd)pyrene	ND	0.00067	"	"	"		"	"
Naphthalene	ND	0.00067	"	"	"		"	"
Pyrene	ND	0.00067	"	"	"		"	"
Surrogate: 2-Fluorobiphenyl	56.1 %	33-115			"		"	"
Surrogate: 4-Terphenyl-d14	58.2 %	33-122			"		"	"
Surrogate: Nitrobenzene-d5	52.4 %	29-110			"		"	"

Origins Laboratory, Inc.

The results in this report apply to the samples analyzed in accordance with the chain of custody document. This analytical report must be reproduced in its entirety.

Eagle Environmental Consulting, Inc.
8000 W 44th Ave
Wheat Ridge CO 80033

Martin C Eckert III
Project Number: -
Project: Bonanza - Fiducial 6-62-34_35SWSW

SB-04@5-7.5'

2/11/2022 12:21:00PM

Analyte	Result	Reporting Limit	Units	Dilution	Batch	Analyst	Prepared	Analyzed	Notes
---------	--------	-----------------	-------	----------	-------	---------	----------	----------	-------

Y202268-09 (Soil)
Origins Laboratory, Inc.

DRO/ORO by EPA 8015D

Diesel (C10-C28)	ND	25.0	mg/kg	1	B2B1119	ZZZ	02/11/2022	02/15/2022	U
Residual Range Organics (C28-C40)	ND	100	"	"	"	ZZZ	"	"	U

Surrogate: o-Terphenyl 76.0 % 50-150 " " "

GBTEX+TMBs by 8260D

1,2,4-Trimethylbenzene	ND	0.00200	mg/kg	1	B2B1903	ZZZ	02/19/2022	02/20/2022	U
1,3,5-Trimethylbenzene	ND	0.00200	"	"	"	ZZZ	"	"	U
Benzene	ND	0.00200	"	"	"	ZZZ	"	"	U
Ethylbenzene	ND	0.00200	"	"	"	ZZZ	"	"	U
Toluene	ND	0.00200	"	"	"	ZZZ	"	"	U
Xylenes, total	0.00716	0.00200	"	"	"	ZZZ	"	"	
Gasoline Range Hydrocarbons	ND	0.200	"	"	"	ZZZ	"	"	U

Surrogate: 1,2-Dichloroethane-d4 129 % 70-130 " " "
Surrogate: Toluene-d8 103 % 70-130 " " "
Surrogate: 4-Bromofluorobenzene 101 % 70-130 " " "

Waypoint Analytical, Inc.

PAH by 8270D SIM

1-Methylnaphthalene	ND	0.00067	mg/Kg	1	L599362		02/14/2022	02/16/2022	
---------------------	----	---------	-------	---	---------	--	------------	------------	--

Origins Laboratory, Inc.

The results in this report apply to the samples analyzed in accordance with the chain of custody document. This analytical report must be reproduced in its entirety.

Eagle Environmental Consulting, Inc.
8000 W 44th Ave
Wheat Ridge CO 80033

Martin C Eckert III
Project Number: -
Project: Bonanza - Fiducial 6-62-34_35SWSW

SB-04@5-7.5'

2/11/2022 12:21:00PM

Analyte	Result	Reporting Limit	Units	Dilution	Batch	Analyst	Prepared	Analyzed	Notes
---------	--------	-----------------	-------	----------	-------	---------	----------	----------	-------

Y202268-09 (Soil)

Waypoint Analytical, Inc.

PAH by 8270D SIM

2-Methylnaphthalene	ND	0.00067	mg/Kg	1	L599362		02/14/2022	02/16/2022
Acenaphthene	ND	0.00067	"	"	"		"	"
Anthracene	ND	0.00067	"	"	"		"	"
Benzo(a)anthracene	ND	0.00067	"	"	"		"	"
Benzo(a)pyrene	ND	0.00067	"	"	"		"	"
Benzo(b)fluoranthene	ND	0.00067	"	"	"		"	"
Benzo(k)fluoranthene	ND	0.00067	"	"	"		"	"
Chrysene	ND	0.00067	"	"	"		"	"
Dibenz(a,h)anthracene	ND	0.00067	"	"	"		"	"
Fluoranthene	ND	0.00067	"	"	"		"	"
Fluorene	ND	0.00067	"	"	"		"	"
Indeno(1,2,3-cd)pyrene	ND	0.00067	"	"	"		"	"
Naphthalene	ND	0.00067	"	"	"		"	"
Pyrene	ND	0.00067	"	"	"		"	"

Surrogate: 2-Fluorobiphenyl	59.1 %	33-115	"	"	"
Surrogate: 4-Terphenyl-d14	61.2 %	33-122	"	"	"
Surrogate: Nitrobenzene-d5	55.1 %	29-110	"	"	"

Origins Laboratory, Inc.



The results in this report apply to the samples analyzed in accordance with the chain of custody document. This analytical report must be reproduced in its entirety.

Eagle Environmental Consulting, Inc.
8000 W 44th Ave
Wheat Ridge CO 80033

Martin C Eckert III
Project Number: -
Project: Bonanza - Fiducial 6-62-34_35SWSW

SB-04@7.5-10'

2/11/2022 12:22:00PM

Analyte	Result	Reporting Limit	Units	Dilution	Batch	Analyst	Prepared	Analyzed	Notes
---------	--------	-----------------	-------	----------	-------	---------	----------	----------	-------

Y202268-10 (Soil)
Origins Laboratory, Inc.

DRO/ORO by EPA 8015D

Diesel (C10-C28)	ND	25.0	mg/kg	1	B2B1119	ZZZ	02/11/2022	02/15/2022	U
Residual Range Organics (C28-C40)	ND	100	"	"	"	ZZZ	"	"	U

Surrogate: o-Terphenyl 76.2 % 50-150 " " "

GBTEX+TMBs by 8260D

1,2,4-Trimethylbenzene	ND	0.00200	mg/kg	1	B2B1903	ZZZ	02/19/2022	02/20/2022	U
1,3,5-Trimethylbenzene	ND	0.00200	"	"	"	ZZZ	"	"	U
Benzene	ND	0.00200	"	"	"	ZZZ	"	"	U
Ethylbenzene	ND	0.00200	"	"	"	ZZZ	"	"	U
Toluene	ND	0.00200	"	"	"	ZZZ	"	"	U
Xylenes, total	ND	0.00200	"	"	"	ZZZ	"	"	U
Gasoline Range Hydrocarbons	ND	0.200	"	"	"	ZZZ	"	"	U

Surrogate: 1,2-Dichloroethane-d4 133 % 70-130 " " " S-07
Surrogate: Toluene-d8 106 % 70-130 " " "
Surrogate: 4-Bromofluorobenzene 99.7 % 70-130 " " "

Waypoint Analytical, Inc.

PAH by 8270D SIM

1-Methylnaphthalene	ND	0.00067	mg/Kg	1	L599362		02/14/2022	02/16/2022	
---------------------	----	---------	-------	---	---------	--	------------	------------	--

Origins Laboratory, Inc.

The results in this report apply to the samples analyzed in accordance with the chain of custody document. This analytical report must be reproduced in its entirety.

Eagle Environmental Consulting, Inc.
8000 W 44th Ave
Wheat Ridge CO 80033

Martin C Eckert III
Project Number: -
Project: Bonanza - Fiducial 6-62-34_35SWSW

SB-04@7.5-10'

2/11/2022 12:22:00PM

Analyte	Result	Reporting Limit	Units	Dilution	Batch	Analyst	Prepared	Analyzed	Notes
---------	--------	-----------------	-------	----------	-------	---------	----------	----------	-------

Y202268-10 (Soil)
Waypoint Analytical, Inc.

PAH by 8270D SIM

2-Methylnaphthalene	ND	0.00067	mg/Kg	1	L599362		02/14/2022	02/16/2022	
Acenaphthene	ND	0.00067	"	"	"		"	"	
Anthracene	ND	0.00067	"	"	"		"	"	
Benzo(a)anthracene	ND	0.00067	"	"	"		"	"	
Benzo(a)pyrene	ND	0.00067	"	"	"		"	"	
Benzo(b)fluoranthene	ND	0.00067	"	"	"		"	"	
Benzo(k)fluoranthene	ND	0.00067	"	"	"		"	"	
Chrysene	ND	0.00067	"	"	"		"	"	
Dibenz(a,h)anthracene	ND	0.00067	"	"	"		"	"	
Fluoranthene	ND	0.00067	"	"	"		"	"	
Fluorene	ND	0.00067	"	"	"		"	"	
Indeno(1,2,3-cd)pyrene	ND	0.00067	"	"	"		"	"	
Naphthalene	ND	0.00067	"	"	"		"	"	
Pyrene	ND	0.00067	"	"	"		"	"	
Surrogate: 2-Fluorobiphenyl	59.5 %	33-115			"		"	"	
Surrogate: 4-Terphenyl-d14	60.7 %	33-122			"		"	"	
Surrogate: Nitrobenzene-d5	54.7 %	29-110			"		"	"	

Origins Laboratory, Inc.

The results in this report apply to the samples analyzed in accordance with the chain of custody document. This analytical report must be reproduced in its entirety.

Eagle Environmental Consulting, Inc.
8000 W 44th Ave
Wheat Ridge CO 80033

Martin C Eckert III
Project Number: -
Project: Bonanza - Fiducial 6-62-34_35SWSW

SB-05@5-7.5'

2/11/2022 12:30:00PM

Analyte	Result	Reporting Limit	Units	Dilution	Batch	Analyst	Prepared	Analyzed	Notes
---------	--------	-----------------	-------	----------	-------	---------	----------	----------	-------

Y202268-11 (Soil)
Origins Laboratory, Inc.

DRO/ORO by EPA 8015D

Diesel (C10-C28)	ND	25.0	mg/kg	1	B2B1119	ZZZ	02/11/2022	02/15/2022	U
Residual Range Organics (C28-C40)	ND	100	"	"	"	ZZZ	"	"	U

Surrogate: o-Terphenyl 74.3 % 50-150 " " "

GBTEX+TMBs by 8260D

1,2,4-Trimethylbenzene	ND	0.00200	mg/kg	1	B2B1903	ZZZ	02/19/2022	02/20/2022	U
1,3,5-Trimethylbenzene	ND	0.00200	"	"	"	ZZZ	"	"	U
Benzene	ND	0.00200	"	"	"	ZZZ	"	"	U
Ethylbenzene	ND	0.00200	"	"	"	ZZZ	"	"	U
Toluene	ND	0.00200	"	"	"	ZZZ	"	"	U
Xylenes, total	0.00750	0.00200	"	"	"	ZZZ	"	"	
Gasoline Range Hydrocarbons	ND	0.200	"	"	"	ZZZ	"	"	U

Surrogate: 1,2-Dichloroethane-d4 133 % 70-130 " " " S-GC
Surrogate: Toluene-d8 101 % 70-130 " " "
Surrogate: 4-Bromofluorobenzene 98.9 % 70-130 " " "

Waypoint Analytical, Inc.

PAH by 8270D SIM

1-Methylnaphthalene	ND	0.00067	mg/Kg	1	L599362		02/14/2022	02/16/2022	
---------------------	----	---------	-------	---	---------	--	------------	------------	--

Origins Laboratory, Inc.

The results in this report apply to the samples analyzed in accordance with the chain of custody document. This analytical report must be reproduced in its entirety.

Eagle Environmental Consulting, Inc.
8000 W 44th Ave
Wheat Ridge CO 80033

Martin C Eckert III
Project Number: -
Project: Bonanza - Fiducial 6-62-34_35SWSW

SB-05@5-7.5'

2/11/2022 12:30:00PM

Analyte	Result	Reporting Limit	Units	Dilution	Batch	Analyst	Prepared	Analyzed	Notes
---------	--------	-----------------	-------	----------	-------	---------	----------	----------	-------

Y202268-11 (Soil)
Waypoint Analytical, Inc.

PAH by 8270D SIM

2-Methylnaphthalene	ND	0.00067	mg/Kg	1	L599362		02/14/2022	02/16/2022
Acenaphthene	ND	0.00067	"	"	"		"	"
Anthracene	ND	0.00067	"	"	"		"	"
Benzo(a)anthracene	ND	0.00067	"	"	"		"	"
Benzo(a)pyrene	ND	0.00067	"	"	"		"	"
Benzo(b)fluoranthene	ND	0.00067	"	"	"		"	"
Benzo(k)fluoranthene	ND	0.00067	"	"	"		"	"
Chrysene	ND	0.00067	"	"	"		"	"
Dibenz(a,h)anthracene	ND	0.00067	"	"	"		"	"
Fluoranthene	ND	0.00067	"	"	"		"	"
Fluorene	ND	0.00067	"	"	"		"	"
Indeno(1,2,3-cd)pyrene	ND	0.00067	"	"	"		"	"
Naphthalene	ND	0.00067	"	"	"		"	"
Pyrene	ND	0.00067	"	"	"		"	"

Surrogate: 2-Fluorobiphenyl	60.4 %	33-115	"	"	"
Surrogate: 4-Terphenyl-d14	61.6 %	33-122	"	"	"
Surrogate: Nitrobenzene-d5	56.8 %	29-110	"	"	"

Origins Laboratory, Inc.

The results in this report apply to the samples analyzed in accordance with the chain of custody document. This analytical report must be reproduced in its entirety.

Eagle Environmental Consulting, Inc.
8000 W 44th Ave
Wheat Ridge CO 80033

Martin C Eckert III
Project Number: -
Project: Bonanza - Fiducial 6-62-34_35SWSW

SB-05@7.5-10'

2/11/2022 12:31:00PM

Analyte	Result	Reporting Limit	Units	Dilution	Batch	Analyst	Prepared	Analyzed	Notes
---------	--------	-----------------	-------	----------	-------	---------	----------	----------	-------

Y202268-12 (Soil)
Origins Laboratory, Inc.

DRO/ORO by EPA 8015D

Diesel (C10-C28)	ND	25.0	mg/kg	1	B2B1119	ZZZ	02/11/2022	02/15/2022	U
Residual Range Organics (C28-C40)	ND	100	"	"	"	ZZZ	"	"	U

Surrogate: o-Terphenyl 80.3 % 50-150 " " "

GBTEX+TMBs by 8260D

1,2,4-Trimethylbenzene	ND	0.00200	mg/kg	1	B2B1903	ZZZ	02/19/2022	02/20/2022	U
1,3,5-Trimethylbenzene	ND	0.00200	"	"	"	ZZZ	"	"	U
Benzene	ND	0.00200	"	"	"	ZZZ	"	"	U
Ethylbenzene	ND	0.00200	"	"	"	ZZZ	"	"	U
Toluene	ND	0.00200	"	"	"	ZZZ	"	"	U
Xylenes, total	0.00724	0.00200	"	"	"	ZZZ	"	"	
Gasoline Range Hydrocarbons	ND	0.200	"	"	"	ZZZ	"	"	U

Surrogate: 1,2-Dichloroethane-d4 131 % 70-130 " " " S-GC
Surrogate: Toluene-d8 104 % 70-130 " " "
Surrogate: 4-Bromofluorobenzene 103 % 70-130 " " "

Waypoint Analytical, Inc.

PAH by 8270D SIM

1-Methylnaphthalene	ND	0.00067	mg/Kg	1	L599362		02/14/2022	02/16/2022	
---------------------	----	---------	-------	---	---------	--	------------	------------	--

Origins Laboratory, Inc.

The results in this report apply to the samples analyzed in accordance with the chain of custody document. This analytical report must be reproduced in its entirety.

Eagle Environmental Consulting, Inc.
8000 W 44th Ave
Wheat Ridge CO 80033

Martin C Eckert III
Project Number: -
Project: Bonanza - Fiducial 6-62-34_35SWSW

SB-05@7.5-10'

2/11/2022 12:31:00PM

Analyte	Result	Reporting Limit	Units	Dilution	Batch	Analyst	Prepared	Analyzed	Notes
---------	--------	-----------------	-------	----------	-------	---------	----------	----------	-------

Y202268-12 (Soil)
Waypoint Analytical, Inc.

PAH by 8270D SIM

2-Methylnaphthalene	ND	0.00067	mg/Kg	1	L599362		02/14/2022	02/16/2022	
Acenaphthene	ND	0.00067	"	"	"		"	"	
Anthracene	ND	0.00067	"	"	"		"	"	
Benzo(a)anthracene	ND	0.00067	"	"	"		"	"	
Benzo(a)pyrene	ND	0.00067	"	"	"		"	"	
Benzo(b)fluoranthene	ND	0.00067	"	"	"		"	"	
Benzo(k)fluoranthene	ND	0.00067	"	"	"		"	"	
Chrysene	ND	0.00067	"	"	"		"	"	
Dibenz(a,h)anthracene	ND	0.00067	"	"	"		"	"	
Fluoranthene	ND	0.00067	"	"	"		"	"	
Fluorene	ND	0.00067	"	"	"		"	"	
Indeno(1,2,3-cd)pyrene	ND	0.00067	"	"	"		"	"	
Naphthalene	ND	0.00067	"	"	"		"	"	
Pyrene	ND	0.00067	"	"	"		"	"	
Surrogate: 2-Fluorobiphenyl	58.9 %	33-115			"		"	"	
Surrogate: 4-Terphenyl-d14	58 %	33-122			"		"	"	
Surrogate: Nitrobenzene-d5	55.6 %	29-110			"		"	"	

Origins Laboratory, Inc.

The results in this report apply to the samples analyzed in accordance with the chain of custody document. This analytical report must be reproduced in its entirety.

Eagle Environmental Consulting, Inc.
8000 W 44th Ave
Wheat Ridge CO 80033

Martin C Eckert III
Project Number: -
Project: Bonanza - Fiducial 6-62-34_35SWSW

Extractable Petroleum Hydrocarbons by 8015D - Quality Control Origins Laboratory, Inc.

Analyte	Result	Reporting Limit	Units	Spike Level	Source Result	%REC	%REC Limits	RPD	RPD Limit	Notes
Batch B2B1119 - EPA 3550B										
Blank (B2B1119-BLK1)					Prepared: 02/11/2022 Analyzed: 02/12/2022					
Diesel (C10-C28)	ND	25.0	mg/kg							U
Residual Range Organics (C28-C40)	ND	100	"							U
Surrogate: o-Terphenyl	19		"	24.9		77.3	50-150			

Origins Laboratory, Inc.



The results in this report apply to the samples analyzed in accordance with the chain of custody document. This analytical report must be reproduced in its entirety.

Eagle Environmental Consulting, Inc.

8000 W 44th Ave

Wheat Ridge CO 80033

Martin C Eckert III

Project Number: -

Project: Bonanza - Fiducial 6-62-34_35SWSW

Extractable Petroleum Hydrocarbons by 8015D - Quality Control

Origins Laboratory, Inc.

Analyte	Result	Reporting Limit	Units	Spike Level	Source Result	%REC	%REC Limits	RPD	RPD Limit	Notes
---------	--------	-----------------	-------	-------------	---------------	------	-------------	-----	-----------	-------

Batch B2B1119 - EPA 3550B

LCS (B2B1119-BS1)

Prepared: 02/11/2022 Analyzed: 02/12/2022

Diesel (C10-C28)	1130	50.0	mg/kg	1000		113	70-130			
Residual Range Organics (C28-C40)	985	200	"	1000		98.5	70-130			
Surrogate: o-Terphenyl	41		"	49.8		83.4	50-150			

Origins Laboratory, Inc.



The results in this report apply to the samples analyzed in accordance with the chain of custody document. This analytical report must be reproduced in its entirety.

Eagle Environmental Consulting, Inc.

8000 W 44th Ave

Wheat Ridge CO 80033

Martin C Eckert III

Project Number: -

Project: Bonanza - Fiducial 6-62-34_35SWSW

Extractable Petroleum Hydrocarbons by 8015D - Quality Control

Origins Laboratory, Inc.

Analyte	Result	Reporting Limit	Units	Spike Level	Source Result	%REC	%REC Limits	RPD	RPD Limit	Notes
---------	--------	-----------------	-------	-------------	---------------	------	-------------	-----	-----------	-------

Batch B2B1119 - EPA 3550B

Matrix Spike (B2B1119-MS1)		Source: Y202267-01			Prepared: 02/11/2022 Analyzed: 02/12/2022					
Diesel (C10-C28)	1050	50.0	mg/kg	1000	ND	105	70-130			
Residual Range Organics (C28-C40)	962	200	"	1000	ND	96.2	70-130			
Surrogate: o-Terphenyl	38		"	49.8		76.9	50-150			

Origins Laboratory, Inc.

The results in this report apply to the samples analyzed in accordance with the chain of custody document. This analytical report must be reproduced in its entirety.

Eagle Environmental Consulting, Inc.
8000 W 44th Ave
Wheat Ridge CO 80033

Martin C Eckert III
Project Number: -
Project: Bonanza - Fiducial 6-62-34_35SWSW

Extractable Petroleum Hydrocarbons by 8015D - Quality Control Origins Laboratory, Inc.

Analyte	Result	Reporting Limit	Units	Spike Level	Source Result	%REC	%REC Limits	RPD	RPD Limit	Notes
---------	--------	-----------------	-------	-------------	---------------	------	-------------	-----	-----------	-------

Batch B2B1119 - EPA 3550B

Matrix Spike Dup (B2B1119-MSD1)		Source: Y202267-01			Prepared: 02/11/2022 Analyzed: 02/12/2022					
Diesel (C10-C28)	1010	50.0	mg/kg	1000	ND	101	70-130	3.16	35	
Residual Range Organics (C28-C40)	937	200	"	1000	ND	93.7	70-130	2.57	35	
Surrogate: o-Terphenyl	46		"	49.8		92.1	50-150			

Origins Laboratory, Inc.



The results in this report apply to the samples analyzed in accordance with the chain of custody document. This analytical report must be reproduced in its entirety.

Eagle Environmental Consulting, Inc.
8000 W 44th Ave
Wheat Ridge CO 80033

Martin C Eckert III
Project Number: -
Project: Bonanza - Fiducial 6-62-34_35SWSW

Extractable Petroleum Hydrocarbons by 8015D - Quality Control

Origins Laboratory, Inc.

Analyte	Result	Reporting Limit	Units	Spike Level	Source Result	%REC	%REC Limits	RPD	RPD Limit	Notes
Batch B2B1903 - EPA 5030 (soil)										
Blank (B2B1903-BLK1)					Prepared: 02/19/2022 Analyzed: 02/19/2022					
1,2,4-Trimethylbenzene	ND	0.00200	mg/kg							U
1,3,5-Trimethylbenzene	ND	0.00200	"							U
Benzene	ND	0.00200	"							U
Ethylbenzene	ND	0.00200	"							U
Naphthalene	ND	0.00380	"							U
Toluene	ND	0.00200	"							U
Xylenes, total	ND	0.00200	"							U
Gasoline Range Hydrocarbons	ND	0.200	"							U
Surrogate: 1,2-Dichloroethane-d4	0.14		"	0.125		112	70-130			
Surrogate: Toluene-d8	0.13		"	0.125		106	70-130			
Surrogate: 4-Bromofluorobenzene	0.12		"	0.125		95.2	70-130			

Origins Laboratory, Inc.

The results in this report apply to the samples analyzed in accordance with the chain of custody document. This analytical report must be reproduced in its entirety.

Eagle Environmental Consulting, Inc.
8000 W 44th Ave
Wheat Ridge CO 80033

Martin C Eckert III
Project Number: -
Project: Bonanza - Fiducial 6-62-34_35SWSW

Volatile Organic Compounds by GC/MS SW846 8260D - Quality Control
Origins Laboratory, Inc.

Analyte	Result	Reporting Limit	Units	Spike Level	Source Result	%REC	%REC Limits	RPD	RPD Limit	Notes
Batch B2B1903 - EPA 5030 (soil)										
LCS (B2B1903-BS1)					Prepared: 02/19/2022 Analyzed: 02/19/2022					
1,2,4-Trimethylbenzene	0.0976	0.00200	mg/kg	0.100		97.6	70-130			
1,3,5-Trimethylbenzene	0.0987	0.00200	"	0.100		98.7	70-130			
Benzene	0.0964	0.00200	"	0.100		96.4	70-130			
Ethylbenzene	0.106	0.00200	"	0.100		106	70-130			
Naphthalene	0.0940	0.0100	"	0.100		94.0	70-130			
Toluene	0.104	0.00200	"	0.100		104	70-130			
o-Xylene	0.107	0.00200	"	0.100		107	70-130			
m,p-Xylene	0.194	0.00400	"	0.200		97.2	70-130			
Surrogate: 1,2-Dichloroethane-d4	0.14		"	0.125		111	70-130			
Surrogate: Toluene-d8	0.13		"	0.125		101	70-130			
Surrogate: 4-Bromofluorobenzene	0.13		"	0.125		102	70-130			

Origins Laboratory, Inc.



The results in this report apply to the samples analyzed in accordance with the chain of custody document. This analytical report must be reproduced in its entirety.

Eagle Environmental Consulting, Inc.
8000 W 44th Ave
Wheat Ridge CO 80033

Martin C Eckert III
Project Number: -
Project: Bonanza - Fiducial 6-62-34_35SWSW

Volatile Organic Compounds by GC/MS SW846 8260D - Quality Control

Origins Laboratory, Inc.

Analyte	Result	Reporting Limit	Units	Spike Level	Source Result	%REC	%REC Limits	RPD	RPD Limit	Notes
Batch B2B1903 - EPA 5030 (soil)										
Matrix Spike (B2B1903-MS1)		Source: Y202268-01			Prepared: 02/19/2022 Analyzed: 02/19/2022					
1,2,4-Trimethylbenzene	0.0869	0.00200	mg/kg	0.100	ND	86.9	70-130			
1,3,5-Trimethylbenzene	0.0859	0.00200	"	0.100	ND	85.9	70-130			
Benzene	0.0800	0.00200	"	0.100	ND	80.0	70-130			
Ethylbenzene	0.0858	0.00200	"	0.100	ND	85.8	70-130			
Naphthalene	0.0869	0.0100	"	0.100	0.00568	81.2	70-130			
Toluene	0.0812	0.00200	"	0.100	ND	81.2	70-130			
o-Xylene	0.0862	0.00200	"	0.100	ND	86.2	70-130			
m,p-Xylene	0.159	0.00400	"	0.200	ND	79.6	70-130			
Surrogate: 1,2-Dichloroethane-d4	0.14		"	0.125		114	70-130			
Surrogate: Toluene-d8	0.12		"	0.125		96.8	70-130			
Surrogate: 4-Bromofluorobenzene	0.13		"	0.125		104	70-130			

Origins Laboratory, Inc.

The results in this report apply to the samples analyzed in accordance with the chain of custody document. This analytical report must be reproduced in its entirety.

Eagle Environmental Consulting, Inc.
8000 W 44th Ave
Wheat Ridge CO 80033

Martin C Eckert III
Project Number: -
Project: Bonanza - Fiducial 6-62-34_35SWSW

Volatile Organic Compounds by GC/MS SW846 8260D - Quality Control
Origins Laboratory, Inc.

Analyte	Result	Reporting Limit	Units	Spike Level	Source Result	%REC	%REC Limits	RPD	RPD Limit	Notes
Batch B2B1903 - EPA 5030 (soil)										
Matrix Spike Dup (B2B1903-MSD1)	Source: Y202268-01				Prepared: 02/19/2022 Analyzed: 02/19/2022					
1,2,4-Trimethylbenzene	0.0905	0.00200	mg/kg	0.100	ND	90.5	70-130	4.06	20	
1,3,5-Trimethylbenzene	0.0882	0.00200	"	0.100	ND	88.2	70-130	2.62	20	
Benzene	0.0861	0.00200	"	0.100	ND	86.1	70-130	7.39	20	
Ethylbenzene	0.0876	0.00200	"	0.100	ND	87.6	70-130	2.08	20	
Naphthalene	0.0941	0.0100	"	0.100	0.00568	88.4	70-130	7.94	20	
Toluene	0.0848	0.00200	"	0.100	ND	84.8	70-130	4.34	20	
o-Xylene	0.0876	0.00200	"	0.100	ND	87.6	70-130	1.63	20	
m,p-Xylene	0.163	0.00400	"	0.200	ND	81.6	70-130	2.53	20	
Surrogate: 1,2-Dichloroethane-d4	0.14		"	0.125		115	70-130			
Surrogate: Toluene-d8	0.12		"	0.125		95.2	70-130			
Surrogate: 4-Bromofluorobenzene	0.13		"	0.125		102	70-130			

Origins Laboratory, Inc.



The results in this report apply to the samples analyzed in accordance with the chain of custody document. This analytical report must be reproduced in its entirety.

Eagle Environmental Consulting, Inc.
8000 W 44th Ave
Wheat Ridge CO 80033

Martin C Eckert III
Project Number: -
Project: Bonanza - Fiducial 6-62-34_35SWSW

Volatile Organic Compounds by GC/MS SW846 8260D - Quality Control
Origins Laboratory, Inc.

Analyte	Result	Reporting Limit	Units	Spike Level	Source Result	%REC	%REC Limits	RPD	RPD Limit	Notes
---------	--------	-----------------	-------	-------------	---------------	------	-------------	-----	-----------	-------

PAH by 8270D SIM - Quality Control
Waypoint Analytical, Inc.

Analyte	Result	Reporting Limit	Units	Spike Level	Source Result	%REC	%REC Limits	RPD	RPD Limit	Notes
---------	--------	-----------------	-------	-------------	---------------	------	-------------	-----	-----------	-------

Batch L599362 - 3550B

MSD (L 90800-MSD-L599362)		Source: Y202268-02			Prepared: 02/14/2022 Analyzed: 02/16/2022					
Benzo(a)pyrene	0.114	0.000468	mg/Kg	0.166	<0.000468	68.6	30-130	0.8	30	
1-Methylnaphthalene	0.0969	0.000364	"	0.166	<0.000364	58.3	30-130	4.1	30	
2-Methylnaphthalene	0.0971	0.000645	"	0.166	<0.000645	58.4	30-130	3.8	30	
Acenaphthene	0.1	0.000304	"	0.166	<0.000304	60.2	30-130	2.8	30	
Anthracene	0.106	0.000334	"	0.166	<0.000334	63.8	30-130	3.8	30	
Benzo(b)fluoranthene	0.118	0.000585	"	0.166	<0.000585	71	30-130	1.7	30	
Pyrene	0.111	0.000643	"	0.166	<0.000643	66.8	30-130	2.7	30	
Naphthalene	0.0935	0.000484	"	0.166	<0.000484	56.3	30-130	4.4	30	
Indeno(1,2,3-cd)pyrene	0.0949	0.000627	"	0.166	<0.000627	57.1	30-130	5.2	30	
Fluorene	0.107	0.000286	"	0.166	<0.000286	64.4	30-130	3.8	30	
Fluoranthene	0.112	0.000394	"	0.166	<0.000394	67.4	30-130	1.8	30	
Dibenz(a,h)anthracene	0.099	0.000614	"	0.166	<0.000614	59.6	30-130	3.9	30	
Chrysene	0.109	0.000624	"	0.166	<0.000624	65.6	30-130	1.8	30	
Benzo(k)fluoranthene	0.103	0.000437	"	0.166	<0.000437	62	30-130	0.9	30	
Benzo(a)anthracene	0.109	0.000493	"	0.166	<0.000493	65.6	30-130	2.7	30	
Surrogate: 2-Fluorobiphenyl	59.3		"	0.332	187	59.3	33-115			
Surrogate: 4-Terphenyl-d14	62.3		"	0.332	190	62.3	33-122			
Surrogate: Nitrobenzene-d5	53.6		"	0.332	173	53.6	29-110			

MS (L 90800-MS-L599362)		Source: Y202268-02			Prepared: 02/14/2022 Analyzed: 02/16/2022					
Benzo(a)pyrene	0.113	0.000468	mg/Kg	0.164	<0.000468	68.9	30-130			
Chrysene	0.107	0.000624	"	0.164	<0.000624	65.2	30-130			

Origins Laboratory, Inc.

The results in this report apply to the samples analyzed in accordance with the chain of custody document. This analytical report must be reproduced in its entirety.

Eagle Environmental Consulting, Inc.
8000 W 44th Ave
Wheat Ridge CO 80033

Martin C Eckert III
Project Number: -
Project: Bonanza - Fiducial 6-62-34_35SWSW

PAH by 8270D SIM - Quality Control
Waypoint Analytical, Inc.

Analyte	Result	Reporting Limit	Units	Spike Level	Source Result	%REC	%REC Limits	RPD	RPD Limit	Notes
---------	--------	-----------------	-------	-------------	---------------	------	-------------	-----	-----------	-------

Batch L599362 - 3550B

MS (L 90800-MS-L599362)		Source: Y202268-02			Prepared: 02/14/2022 Analyzed: 02/16/2022					
Pyrene	0.108	0.000643	mg/Kg	0.164	<0.000643	65.8	30-130			
Naphthalene	0.0894	0.000484	"	0.164	<0.000484	54.5	30-130			
Indeno(1,2,3-cd)pyrene	0.1	0.000627	"	0.164	<0.000627	60.9	30-130			
Fluorene	0.103	0.000286	"	0.164	<0.000286	62.8	30-130			
Fluoranthene	0.11	0.000394	"	0.164	<0.000394	67	30-130			
Dibenz(a,h)anthracene	0.103	0.000614	"	0.164	<0.000614	62.8	30-130			
Benzo(b)fluoranthene	0.116	0.000585	"	0.164	<0.000585	70.7	30-130			
Benzo(a)anthracene	0.106	0.000493	"	0.164	<0.000493	64.6	30-130			
Anthracene	0.102	0.000334	"	0.164	<0.000334	62.1	30-130			
Acenaphthene	0.0972	0.000304	"	0.164	<0.000304	59.2	30-130			
2-Methylnaphthalene	0.0934	0.000645	"	0.164	<0.000645	56.9	30-130			
1-Methylnaphthalene	0.093	0.000364	"	0.164	<0.000364	56.7	30-130			
Benzo(k)fluoranthene	0.104	0.000437	"	0.164	<0.000437	63.4	30-130			
Surrogate: Nitrobenzene-d5	52.4		"	0.328	173	52.4	29-110			
Surrogate: 2-Fluorobiphenyl	58.2		"	0.328	187	58.2	33-115			
Surrogate: 4-Terphenyl-d14	63.4		"	0.328	190	63.4	33-122			

LCS (LCS-L599362)

Prepared: 02/14/2022 Analyzed: 02/16/2022

Dibenz(a,h)anthracene	0.127	0.000614	mg/Kg	0.167		76	30-130
Fluoranthene	0.11	0.000394	"	0.167		65.8	30-130
Fluorene	0.103	0.000286	"	0.167		61.6	30-130
Indeno(1,2,3-cd)pyrene	0.128	0.000627	"	0.167		76.6	30-130
Naphthalene	0.0889	0.000484	"	0.167		53.2	30-130
Pyrene	0.107	0.000643	"	0.167		64	30-130
Chrysene	0.107	0.000624	"	0.167		64	30-130
1-Methylnaphthalene	0.0926	0.000364	"	0.167		55.4	30-130
Benzo(b)fluoranthene	0.115	0.000585	"	0.167		68.8	30-130

Origins Laboratory, Inc.

The results in this report apply to the samples analyzed in accordance with the chain of custody document. This analytical report must be reproduced in its entirety.

Eagle Environmental Consulting, Inc.
8000 W 44th Ave
Wheat Ridge CO 80033

Martin C Eckert III
Project Number: -
Project: Bonanza - Fiducial 6-62-34_35SWSW

PAH by 8270D SIM - Quality Control
Waypoint Analytical, Inc.

Analyte	Result	Reporting Limit	Units	Spike Level	Source Result	%REC	%REC Limits	RPD	RPD Limit	Notes
---------	--------	-----------------	-------	-------------	---------------	------	-------------	-----	-----------	-------

Batch L599362 - 3550B

LCS (LCS-L599362)

Prepared: 02/14/2022 Analyzed: 02/16/2022

Benzo(a)pyrene	0.111	0.000468	mg/Kg	0.167		66.4	30-130			
Benzo(a)anthracene	0.105	0.000493	"	0.167		62.8	30-130			
Acenaphthene	0.0966	0.000304	"	0.167		57.8	30-130			
2-Methylnaphthalene	0.0923	0.000645	"	0.167		55.2	30-130			
Anthracene	0.102	0.000334	"	0.167		61	30-130			
Benzo(k)fluoranthene	0.113	0.000437	"	0.167		67.6	30-130			
Surrogate: 4-Terphenyl-d14	64.2		"	0.333		64.2	33-122			
Surrogate: Nitrobenzene-d5	55.2		"	0.333		55.2	29-110			
Surrogate: 2-Fluorobiphenyl	60		"	0.333		60	33-115			

LRB (LRB-L599362)

Prepared: 02/14/2022 Analyzed: 02/16/2022

Chrysene	ND	0.00067	mg/Kg				-			
Dibenz(a,h)anthracene	ND	0.00067	"				-			
Fluoranthene	ND	0.00067	"				-			
Fluorene	ND	0.00067	"				-			
Benzo(k)fluoranthene	ND	0.00067	"				-			
Naphthalene	ND	0.00067	"				-			
Indeno(1,2,3-cd)pyrene	ND	0.00067	"				-			
Benzo(b)fluoranthene	ND	0.00067	"				-			
Benzo(a)pyrene	ND	0.00067	"				-			
Benzo(a)anthracene	ND	0.00067	"				-			
Acenaphthene	ND	0.00067	"				-			
2-Methylnaphthalene	ND	0.00067	"				-			
1-Methylnaphthalene	ND	0.00067	"				-			
Pyrene	ND	0.00067	"				-			
Anthracene	ND	0.00067	"				-			
Surrogate: 4-Terphenyl-d14	59.1		"	0.333		59.1	33-122			

Origins Laboratory, Inc.

The results in this report apply to the samples analyzed in accordance with the chain of custody document. This analytical report must be reproduced in its entirety.

Eagle Environmental Consulting, Inc.
8000 W 44th Ave
Wheat Ridge CO 80033

Martin C Eckert III
Project Number: -
Project: Bonanza - Fiducial 6-62-34_35SWSW

PAH by 8270D SIM - Quality Control
Waypoint Analytical, Inc.

Analyte	Result	Reporting Limit	Units	Spike Level	Source Result	%REC	%REC Limits	RPD	RPD Limit	Notes
---------	--------	-----------------	-------	-------------	---------------	------	-------------	-----	-----------	-------

Batch L599362 - 3550B

LRB (LRB-L599362)

Prepared: 02/14/2022 Analyzed: 02/16/2022

Surrogate: Nitrobenzene-d5	50.1		mg/Kg	0.333		50.1	29-110			
Surrogate: 2-Fluorobiphenyl	56.7		"	0.333		56.7	33-115			

Origins Laboratory, Inc.



The results in this report apply to the samples analyzed in accordance with the chain of custody document. This analytical report must be reproduced in its entirety.

Eagle Environmental Consulting, Inc.

8000 W 44th Ave

Wheat Ridge CO 80033

Martin C Eckert III

Project Number: -

Project: Bonanza - Fiducial 6-62-34_35SWSW

Notes and Definitions

U Sample is Non-Detect.

S-GC Surrogate recovery outside of control limits. The data was accepted based on valid recovery of the remaining surrogate.

S-07 High surrogate in sample, however sample is non-detect. High surrogate indicates result values are biased high.

ND Analyte NOT DETECTED at or above the reporting limit

RPD Relative Percent Difference

All soil results are reported at a wet weight basis.

Origins Laboratory, Inc.



The results in this report apply to the samples analyzed in accordance with the chain of custody document. This analytical report must be reproduced in its entirety.