



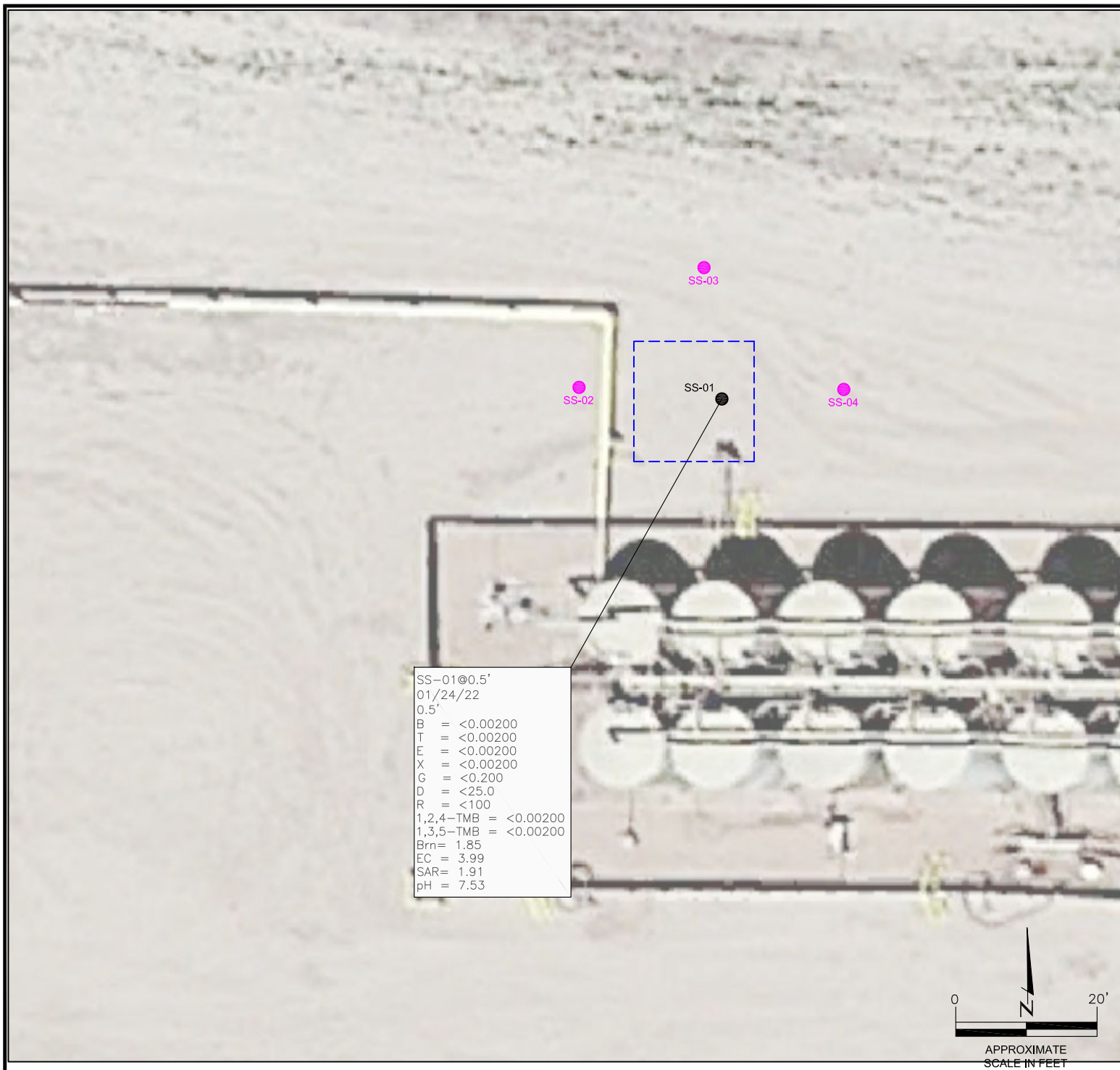
FIGURES

Figure 1: Soil Analytical Map

Figure 2: Polycyclic Aromatic Hydrocarbons Map

Figure 3: Metals in Soil Map

Figure 4: Confirmation Polycyclic Aromatic Hydrocarbons Map



LEGEND

- INITIAL ASSESSMENT BOUNDARIES
- SS-01 APPROXIMATE LOCATION OF SOIL SAMPLES
FIELD-SCREENED, ONLY
- SS-01 APPROXIMATE LOCATION OF SOIL SAMPLE
SUBMITTED FOR LABORATORY ANALYSIS

PARAMETERS

SAMPLE LOCATION
DATE
DEPTH (FEET)
B = BENZENE (mg/kg)
T = TOLUENE (mg/kg)
E = ETHYLBENZENE (mg/kg)
X = TOTAL XYLENES (mg/kg)
G = TPH-GRO (mg/kg)
D = TPH-DRO (mg/kg)
R = TPH-RRO (mg/kg)
1,2,4-TMB = 1,2,4 TRIMETHYLBENZENE (mg/kg)
1,3,5-TMB = 1,3,5 TRIMETHYLBENZENE (mg/kg)
Brn= BORON (mg/L)
EC = SPECIFIC CONDUCTANCE (mmhos/cm)
SAR= SODIUM ADSORPTION RATIO
pH = pH (pH UNITS)

mg/kg = MILLIGRAMS PER KILOGRAM
mg/L = MILLIGRAMS PER LITER
mmhos/cm = MILLIMHOS PER CENTIMETER

TPH-GRO = TOTAL PETROLEUM HYDROCARBONS -
GASOLINE RANGE ORGANICS
TPH-DRO = TOTAL PETROLEUM HYDROCARBONS - DIESEL
RANGE ORGANICS
TPH-RRO = TOTAL PETROLEUM HYDROCARBONS -
RESIDUAL RANGE ORGANICS

NOTE:
VALUES PRESENTED WITH A LESS THAN SYMBOL (<) DID
NOT CONTAIN CONCENTRATIONS AT OR ABOVE LABORATORY
DETECTION LIMITS

VALUES PRESENTED IN **BOLD** TYPEFACE EXCEED COGCC
TABLE 915-1 REGULATORY LIMITS FOR THAT COMPOUND.
VALUES WITH AN ASTERISK (*) EXCEED PROTECTION OF
GROUNDWATER SOIL SCREENING LEVELS.

COGCC - COLORADO OIL AND GAS CONSERVATION
COMMISSION

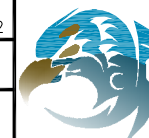
SOIL ANALYTICAL MAP

ANTELOPE B-33
SURFACE RELEASE
40.360204 / -104.337011
SW1/4 NW1/4 SEC.33 T5N R62W 6PM
WELD COUNTY, COLORADO
LOCATION ID 432287
SPILL ID 481433

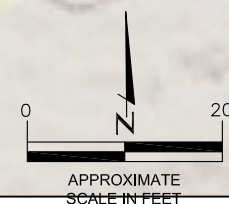
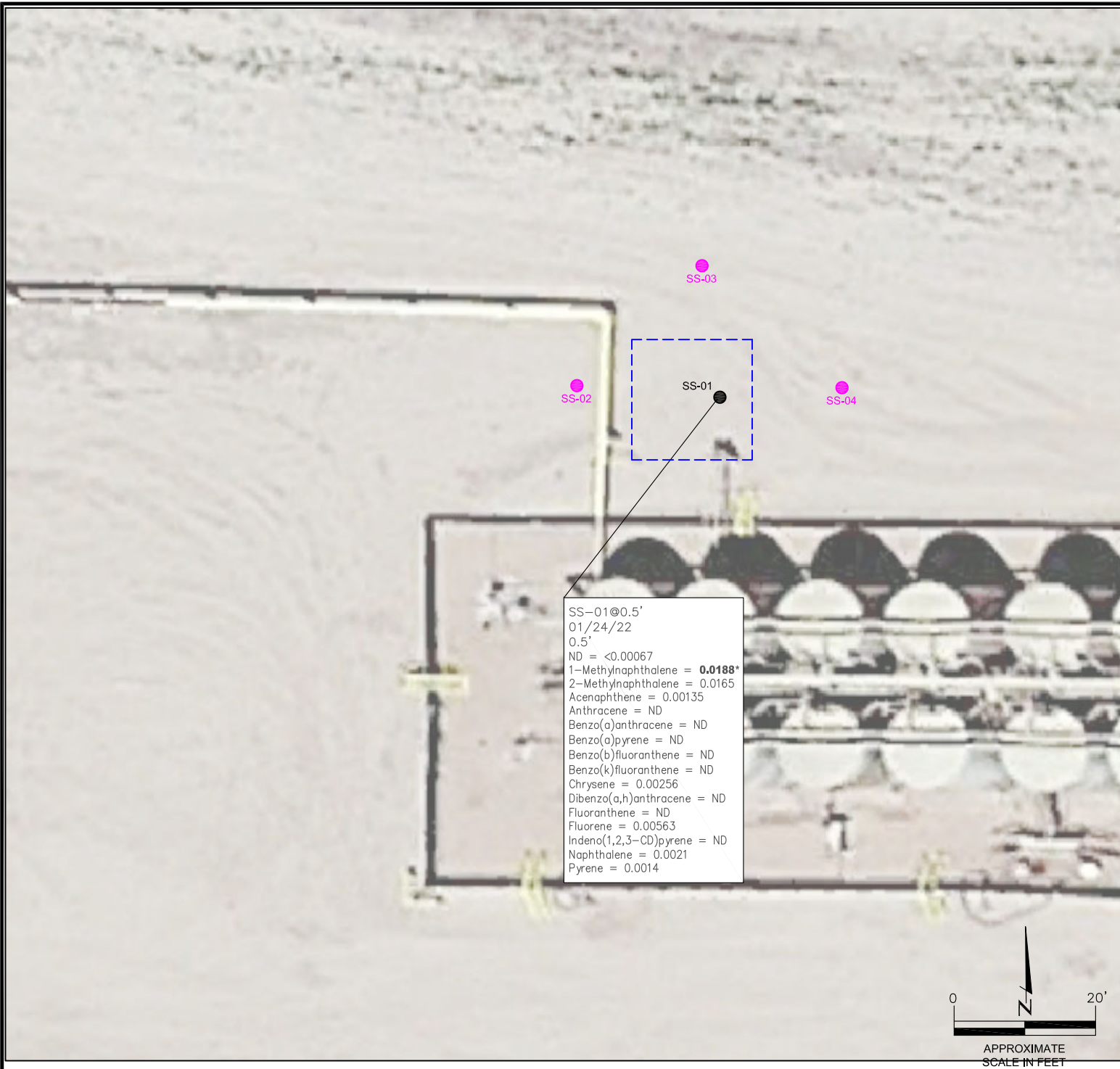
DATE:
03/10/22

DRAWN BY:
AMN

FIG.
NO. 1



EAGLE
ENVIRONMENTAL
CONSULTING, INC.
8000 W 44th Ave, Wheat Ridge, CO 80033
Ph: 303-433-0479 • F: 303-325-5449



LEGEND

- INITIAL ASSESSMENT BOUNDARIES
- SS-01 APPROXIMATE LOCATION OF SOIL SAMPLES
FIELD-SCREENED, ONLY
- SS-01 APPROXIMATE LOCATION OF SOIL SAMPLE
SUBMITTED FOR LABORATORY ANALYSIS

PARAMETERS

SAMPLE LOCATION
DATE SAMPLE COLLECTED
APPROXIMATE DEPTH

POLYCYCLIC AROMATIC HYDROCARBONS (PAHs)

NOTE:
CONCENTRATIONS PRESENTED IN mg/kg

mg/kg = MILLIGRAMS PER KILOGRAM

NOTES:
VALUES PRESENTED WITH A LESS THAN SYMBOL (<) DID NOT
CONTAIN CONCENTRATIONS AT OR ABOVE LABORATORY
REPORT LIMITS

VALUES PRESENTED IN **BOLD** TYPEFACE EXCEED COGCC
TABLE 915-1 REGULATORY LIMITS FOR THAT COMPOUND.
VALUES WITH AN ASTERISK (*) EXCEED PROTECTION OF
GROUNDWATER SOIL SCREENING LEVELS.

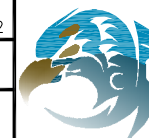
COGCC - COLORADO OIL AND GAS CONSERVATION
COMMISSION

POLYCYCLIC AROMATIC HYDROCARBONS MAP
ANTELOPE B-33
SURFACE RELEASE
40.360204 / -104.337011
SW1/4 NW1/4 SEC.33 T5N R62W 6PM
WELD COUNTY, COLORADO
LOCATION ID 432287
SPILL ID 481434

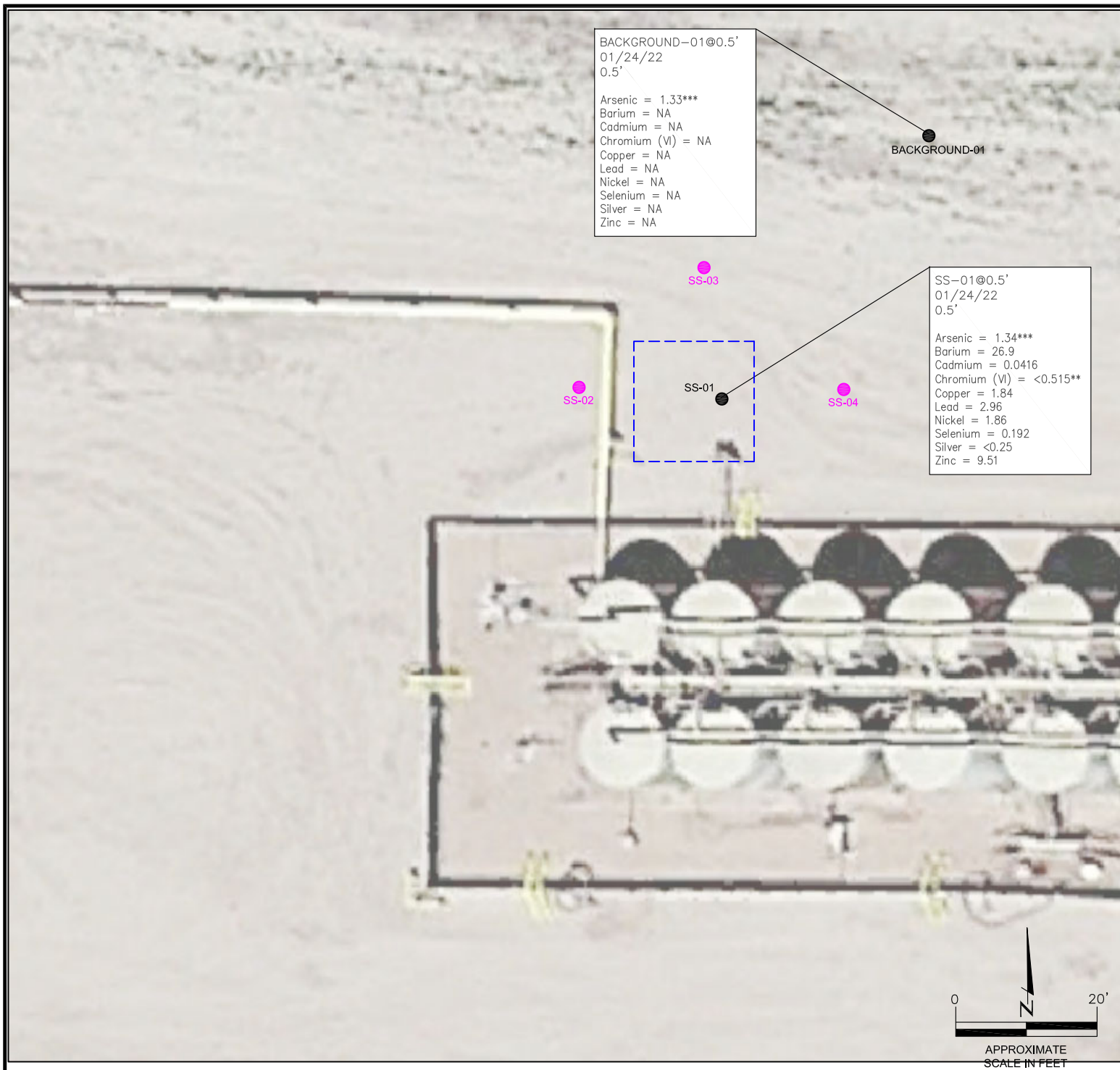
DATE:
03/10/22

DRAWN BY:
AMN

FIG.
NO. 2



EAGLE
ENVIRONMENTAL
CONSULTING, INC.
8000 W 44th Ave, Wheat Ridge, CO 80033
Ph: 303-433-0479 • F: 303-325-5449



LEGEND

- INITIAL ASSESSMENT BOUNDARIES
- SS-01 APPROXIMATE LOCATION OF SOIL SAMPLES FIELD-SCREENED, ONLY
- SS-01 APPROXIMATE LOCATION OF SOIL SAMPLE SUBMITTED FOR LABORATORY ANALYSIS

PARAMETERS

SAMPLE LOCATION
DATE SAMPLE COLLECTED
APPROXIMATE DEPTH
Barium = (mg/kg)
Cadmium = (mg/kg)
Chromium (VI) = (mg/kg)
Copper = (mg/kg)
Lead = (mg/kg)
Nickel = (mg/kg)
Selenium = (mg/kg)
Silver = (mg/kg)
Zinc = (mg/kg)

mg/kg = MILLIGRAMS PER KILOGRAM

(NA) – NOT ANALYZED

NOTE:

VALUES PRESENTED WITH A LESS THAN SYMBOL (<) DID NOT CONTAIN CONCENTRATIONS AT OR ABOVE LABORATORY DETECTION LIMITS

VALUES PRESENTED IN **BOLD** VALUES CONTAIN CONCENTRATIONS EXCEEDING COGCC TABLE 915-1 REGULATORY LIMITS. VALUES WITH ASTERISK (*) EXCEED "PROTECTION OF GROUNDWATER SOIL SCREENING LEVELS" FOR THAT COMPOUND.

****ACHIEVABLE PRACTICAL QUANTITATIVE LIMITS FOR HEXAVALENT CHROMIUM (Cr VI) IN SOILS IS IN THE RANGE OF 0.1 TO 1 mg/kg.**

*****ARSENIC IS NATURALLY OCCURRING IN COLORADO. LOCAL CLEAN-UP LEVEL (1.66 mg/kg) IS 1.25*LOCAL BACKGROUND (1.33 mg/kg).**

COGCC = COLORADO OIL AND GAS CONSERVATION COMMISSION

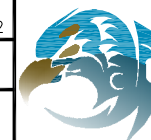
METALS IN SOIL MAP

ANTELOPE B-33
SURFACE RELEASE
40.360204 / -104.337011
SW1/4 NW1/4 SEC.33 T5N R62W 6PM
WELD COUNTY, COLORADO
LOCATION ID 432287
SPILL ID 481433

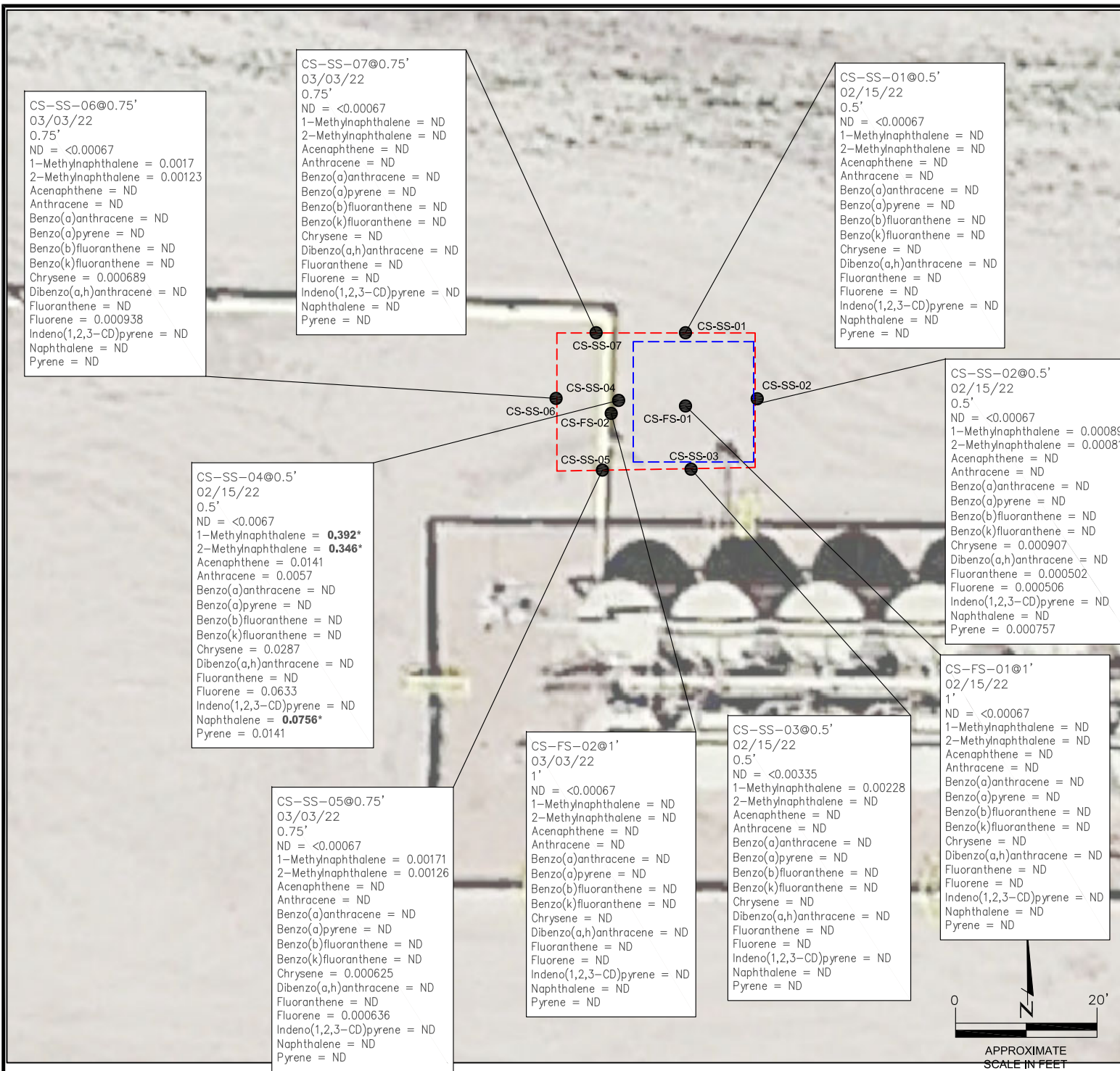
DATE:
03/10/22

DRAWN BY:
AMN

FIG.
NO. 3



EAGLE
ENVIRONMENTAL
CONSULTING, INC.
8000 W 44th Ave, Wheat Ridge, CO 80033
Ph: 303-433-0479 • F: 303-325-5449



LEGEND

- INITIAL ASSESSMENT BOUNDARIES
- APPROXIMATE OVER-EXCAVATION BOUNDARIES
- APPROXIMATE LOCATION OF CONFIRMATION SOIL SAMPLES SUBMITTED FOR LABORATORY ANALYSIS

PARAMETERS

SAMPLE LOCATION
DATE SAMPLE COLLECTED
APPROXIMATE DEPTH

POLYCYCLIC AROMATIC HYDROCARBONS (PAHs)

NOTE:
CONCENTRATIONS PRESENTED IN mg/kg

mg/kg = MILLIGRAMS PER KILOGRAM
MDL = MINIMUM DETECTION LIMIT

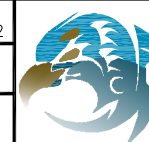
NOTE:
VALUES PRESENTED WITH A LESS THAN SYMBOL (<) DID NOT CONTAIN CONCENTRATIONS AT OR ABOVE LABORATORY MDL AND/OR REPORTING LIMITS

VALUES PRESENTED IN **BOLD** WITH ASTERISK (*) EXCEED COGCC TABLE 915-1 PROTECTION OF GROUNDWATER SOIL SCREENING LEVELS.

COGCC - COLORADO OIL AND GAS CONSERVATION COMMISSION

CONFIRMATION
POLYCYCLIC AROMATIC HYDROCARBONS MAP
ANTELOPE B-33
SURFACE RELEASE
40.360204 / -104.337011
SW1/4 NW1/4 SEC.33 T5N R62W 6PM
WELD COUNTY, COLORADO
LOCATION ID 432287
SPILL ID 481433

DATE:
03/10/22
DRAWN BY:
AMN
FIG.
NO. 4



EAGLE
ENVIRONMENTAL
CONSULTING, INC.
8000 W 44th Ave, Wheat Ridge, CO 80033
Ph: 303-433-0479 • F: 303-325-5449



TABLES

Table 1: Photoionization Detector Reading Summary

Table 2: Soil Analytical Results Summary

Table 3: Polycyclic Aromatic Hydrocarbons Analytical Results Summary

Table 4: Metals Analytical Results Summary

TABLE 1
 PHOTOIONIZATION DETECTOR READING SUMMARY
 ANTELOPE B-33
 SURFACE RELEASE
 40.360204 / -104.337011
 SW1/4 NW1/4 SEC.33 T5N R62W 6PM
 WELD COUNTY, COLORADO
 LOCATION ID 432287
 SPILL ID 481433

Sample Location (Latitude/Longitude)	Date	Approximate Depth (feet)	PID Reading (ppm-v)	Lab Submission (Y/N)
SS-01 @ 0.5' (40.360225 / -104.337015)	01/24/22	0.5	7.8	Y
SS-02 @ 0.25' (40.360227 / -104.337060)	01/24/22	0.25	1.1	N
SS-03 @ 0.25' (40.360273 / -104.337017)	01/24/22	0.25	3.2	N
SS-04 @ 0.25' (40.360226 / -104.336965)	01/24/22	0.25	2.7	N
Background-01 @ 0.5' (40.360332 / -104.336884)	01/24/22	0.5	4.5	Y
CS-SS-01 @ 0.5' (40.360250 / -104.336985)	02/15/22	0.5	2.5	Y
CS-SS-02 @ 0.5' (40.360229 / -104.336969)	02/15/22	0.5	2.8	Y
CS-SS-03 @ 0.5' (40.360204 / -104.336982)	02/15/22	0.5	2.2	Y
CS-SS-04 @ 0.5' (40.360228 / -104.337035)	02/15/22	0.5	9.7	Y
CS-FS-01 @ 1' (40.360227 / -104.337011)	02/15/22	1	3.0	Y
CS-SS-05 @ 0.75' (40.360206 / -104.337064)	03/03/22	0.75	4.1	Y
CS-SS-06 @ 0.75' (40.360227 / -104.337078)	03/03/22	0.75	6.3	Y
CS-SS-07 @ 0.75' (40.360249 / -104.337067)	03/03/22	0.75	1.6	Y
CS-FS-02 @ 1' (40.360228 / -104.337042)	03/03/22	1	6.8	Y
(Y/N) = Yes or No ppm-v = parts per million by volume PID = Photoionization Detector				

TABLE 2
SOIL ANALYTICAL RESULTS SUMMARY
ANTELOPE B-33
SURFACE RELEASE
40.360204 / -104.337011
SW1/4 NW1/4 SEC.33 T5N R62W 6PM
WELD COUNTY, COLORADO
LOCATION ID 432287
SPILL ID 481433

Sample Location (Latitude/Longitude)	Date	Approximate Depth (feet)	PID Reading (ppm-v)	Benzene (mg/kg)	Toluene (mg/kg)	Ethylbenzene (mg/kg)	Total Xylenes (mg/kg)	TPH-GRO (mg/kg)	TPH-DRO (mg/kg)	TPH-RRO (mg/kg)	1,2,4-TMB (mg/kg)	1,3,5-TMB (mg/kg)	Boron (mg/L)	Specific Conductance (mmhos/cm)	pH (pH units)	SAR
COGCC Table 915-1 Residential Screening Levels (mg/kg)				1.20	490	5.8	58	500			30	27	2	<4	6-8.3	<6
COGCC Table 915-1 Protection of Groundwater Soil Screening Levels				0.0026	0.69	0.78	9.9	--			0.0081	0.0087	--	--	--	--
SS-01 @ 0.5' (40.360225 / -104.337015)	01/24/22	0.5	7.8	<0.00200	<0.00200	<0.00200	<0.00200	<0.200	<25.0	<100	<0.00200	<0.00200	1.85	3.99	7.53	1.91
COGCC = Colorado Oil and Gas Conservation Commission mg/kg = milligrams per kilogram mmhos/cm = millimhos per centimeter PID = Photoionization Detector ppm-v = parts per million by volume mg/L = milligrams per liter SAR = Sodium Adsorption Ratio Note: Values presented with a less than symbol (<) did not contain concentrations at or above the laboratory reporting limit. Note: Values presented in BOLD contained concentrations exceeding COGCC Table 915-1 Regulatory Limits. Values presented with asterisk (*) exceed COGCC Table 915-1 Protection of Groundwater Soil Screening Levels.																

TABLE 3
POLYCYCLIC AROMATIC HYDROCARBONS ANALYTICAL RESULTS SUMMARY
ANTELOPE B-33
SURFACE RELEASE
40.360204 / -104.337011
SW1/4 NW1/4 SEC.33 T5N R62W 6PM
WELD COUNTY, COLORADO
LOCATION ID 432287
SPILL ID 481433

Sample Location (Latitude/Longitude)	Date	Approximate Depth (feet)	PID Reading (ppm- v)	1-Methyl- naphthalene (mg/kg)	2-Methyl-naphthalene (mg/kg)	Acenaphthene (mg/kg)	Anthracene (mg/kg)	Benzo(a)-anthracene (mg/kg)	Benzo(a)- pyrene (mg/kg)	Benzo(b)- fluoranthene (mg/kg)	Benzo(k)- fluoranthene (mg/kg)	Chrysene (mg/kg)	Dibenzo(a,h)- anthracene (mg/kg)	Fluoranthene (mg/kg)	Fluorene (mg/kg)	Indeno(1,2,3- cd)-pyrene (mg/kg)	Naphthalene (mg/kg)	Pyrene (mg/kg)
COGCC Table 915-1 Residential Screening Levels				18	24	360	1,800	1.1	0.11	1.1	11	110	0.11	240	240	1.1	2	180
COGCC Table 915-1 Protection of Groundwater Soil Screening Levels				0.006	0.019	0.55	5.8	0.011	0.24	0.3	2.9	9	0.096	8.9	0.54	0.98	0.0038	1.3
SS-01 @ 0.5' (40.360225 / -104.337015)	01/24/22	0.5	7.8	0.0188*	0.0165	0.00135	<0.00067	<0.00067	<0.00067	<0.00067	<0.00067	0.00256	<0.00067	<0.00067	0.00563	<0.00067	0.0021	0.0014
CS-SS-01 @ 0.5' (40.360250 / -104.336985)	02/15/22	0.5	2.5	<0.00067	<0.00067	<0.00067	<0.00067	<0.00067	<0.00067	<0.00067	<0.00067	<0.00067	<0.00067	<0.00067	<0.00067	<0.00067	<0.00067	<0.00067
CS-SS-02 @ 0.5' (40.360229 / -104.336969)	02/15/22	0.5	2.8	0.000897	0.000817	<0.00067	<0.00067	<0.00067	<0.00067	<0.00067	<0.00067	0.000907	<0.00067	0.000502	0.000506	<0.00067	<0.00067	0.000757
CS-SS-03 @ 0.5' (40.360204 / -104.336982)	02/15/22	0.5	2.2	0.00228	<0.00067	<0.00067	<0.00067	<0.00067	<0.00067	<0.00067	<0.00067	<0.00067	<0.00067	<0.00067	<0.00067	<0.00067	<0.00067	<0.00067
CS-SS-04 @ 0.5' (40.360228 / -104.337035)	02/15/22	0.5	9.7	0.392*	0.346*	0.0141	0.0057	<0.00067	<0.00067	<0.00067	<0.00067	0.0287	<0.00067	<0.00067	0.0633	<0.00067	0.0756*	0.0141
CS-FS-01 @ 1' (40.360227 / -104.337011)	02/15/22	1	3.0	<0.00067	<0.00067	<0.00067	<0.00067	<0.00067	<0.00067	<0.00067	<0.00067	<0.00067	<0.00067	<0.00067	<0.00067	<0.00067	<0.00067	<0.00067
CS-SS-05 @ 0.75' (40.360206 / -104.337064)	03/03/22	0.75	4.1	0.00171	0.00126	<0.00067	<0.00067	<0.00067	<0.00067	<0.00067	<0.00067	0.000625	<0.00067	<0.00067	0.000636	<0.00067	<0.00067	<0.00067
CS-SS-06 @ 0.75' (40.360227 / -104.337078)	03/03/22	0.75	6.3	0.0017	0.00123	<0.00067	<0.00067	<0.00067	<0.00067	<0.00067	<0.00067	0.000698	<0.00067	<0.00067	0.000938	<0.00067	<0.00067	<0.00067
CS-SS-07 @ 0.75' (40.360249 / -104.337067)	03/03/22	0.75	1.6	<0.00067	<0.00067	<0.00067	<0.00067	<0.00067	<0.00067	<0.00067	<0.00067	<0.00067	<0.00067	<0.00067	<0.00067	<0.00067	<0.00067	<0.00067
CS-FS-02 @ 1' (40.360228 / -104.337042)	03/03/22	1	6.8	<0.00067	<0.00067	<0.00067	<0.00067	<0.00067	<0.00067	<0.00067	<0.00067	<0.00067	<0.00067	<0.00067	<0.00067	<0.00067	<0.00067	<0.00067
COGCC = Colorado Oil and Gas Conservation Commission mg/kg = milligrams per kilogram Note: Values presented with a less than symbol (<) did not contain concentrations at or above the laboratory reporting limit. Note: Values presented in BOLD contained concentrations exceeding COGCC Table 915-1 Regulatory Limits. Values presented with asterisk (*) exceed COGCC Table 915-1 Protection of Groundwater Soil Screening Levels.				PID = Photoionization Detector ppm-v = parts per million by volume														

TABLE 4
METALS ANALYTICAL RESULTS SUMMARY
ANTELOPE B-33
SURFACE RELEASE
40.360204 / -104.337011
SW1/4 NW1/4 SEC.33 T5N R62W 6PM
WELD COUNTY, COLORADO
LOCATION ID 432287
SPILL ID 481433

Sample Location (Latitude/Longitude)	Date	Approximate Depth (feet)	Arsenic (mg/kg)	Barium (mg/kg)	Cadmium (mg/kg)	Hexavalent Chromium (mg/kg)	Copper (mg/kg)	Lead (mg/kg)	Nickel (mg/kg)	Selenium (mg/kg)	Silver (mg/kg)	Zinc (mg/kg)
COGCC Table 915-1 Residential Screening Levels			0.68***	15,000	71	0.3**	3,100	400	1,500	390	390	23,000
COGCC Table 915-1 Protection of Groundwater Soil Screening Levels			0.29***	82	0.38	0.00067**	46	14	26	0.26	0.8	370
Local Cleanup Levels			1.66***	--	--	0.1 to 1**	--	--	--	--	--	--
SS-01 @ 0.5'	01/24/22	0.5	1.34***	26.9	0.0416	<0.515	1.84	2.96	1.86	0.192	<0.25	9.51
Background-01 @ 0.5'	01/24/22	0.5	1.33***	NA	NA	NA	NA	NA	NA	NA	NA	NA
COGCC = Colorado Oil and Gas Conservation Commission mg/kg = milligrams per kilogram Notes: Values presented with a less than symbol (<) did not contain concentrations at or above the laboratory reporting limit or minimum detection levels. Values presented in BOLD contained concentrations exceeding applicable COGCC Table 915-1 Regulatory Limits Values presented in BOLD+* contained concentrations exceeding COGCC Table 915-1 Protection of Groundwater Soil Screening Levels **Achievable practical quantitative limits for Hexavalent Chromium in soils is in the range of 0.1 to 1 mg/kg. ***Arsenic is naturally occurring in Colorado. Local clean-up level (1.66 mg/kg) is 1.25*Background (1.33 mg/kg)												



ATTACHMENT A

Photolog

Antelope B-33

SWNW Sec.33 T5N R62W 6PM

Weld, County, CO

Location ID 432287

Spill ID 481433

Surface Release

January-March 2021

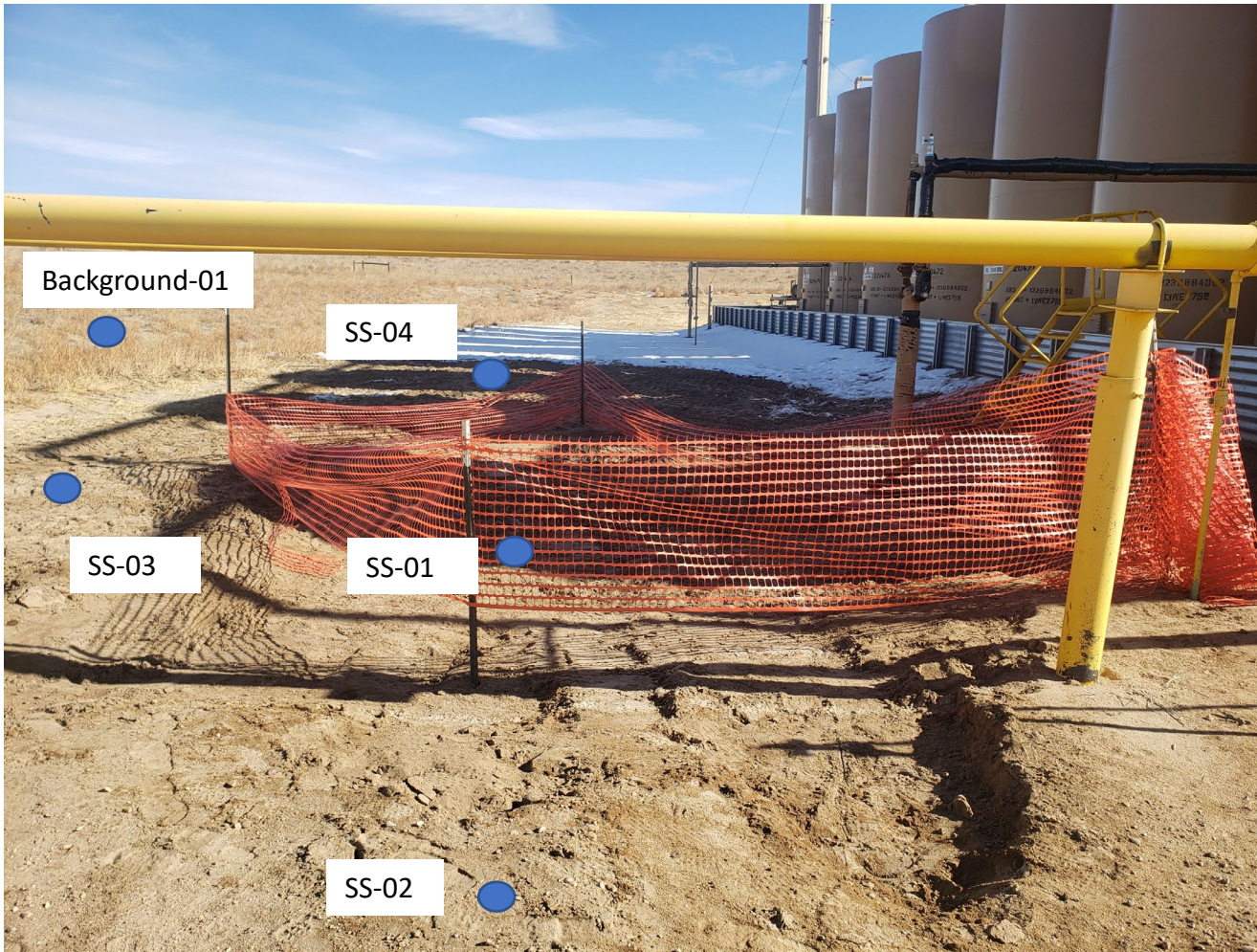


EAGLE
ENVIRONMENTAL
CONSULTING, INC.

8000 W 44th Ave, Wheat Ridge, CO 80033
Ph: 303-433-0479 • F: 303-325-5449



Confirmation Sampling – 01/24/22



Confirmation samples collected following visual delineation/surficial soil removal

No residual petroleum hydrocarbon staining and odor observed

Samples:

SS-01 @ 0.5' – 7.8 ppm-v (lab analyzed)

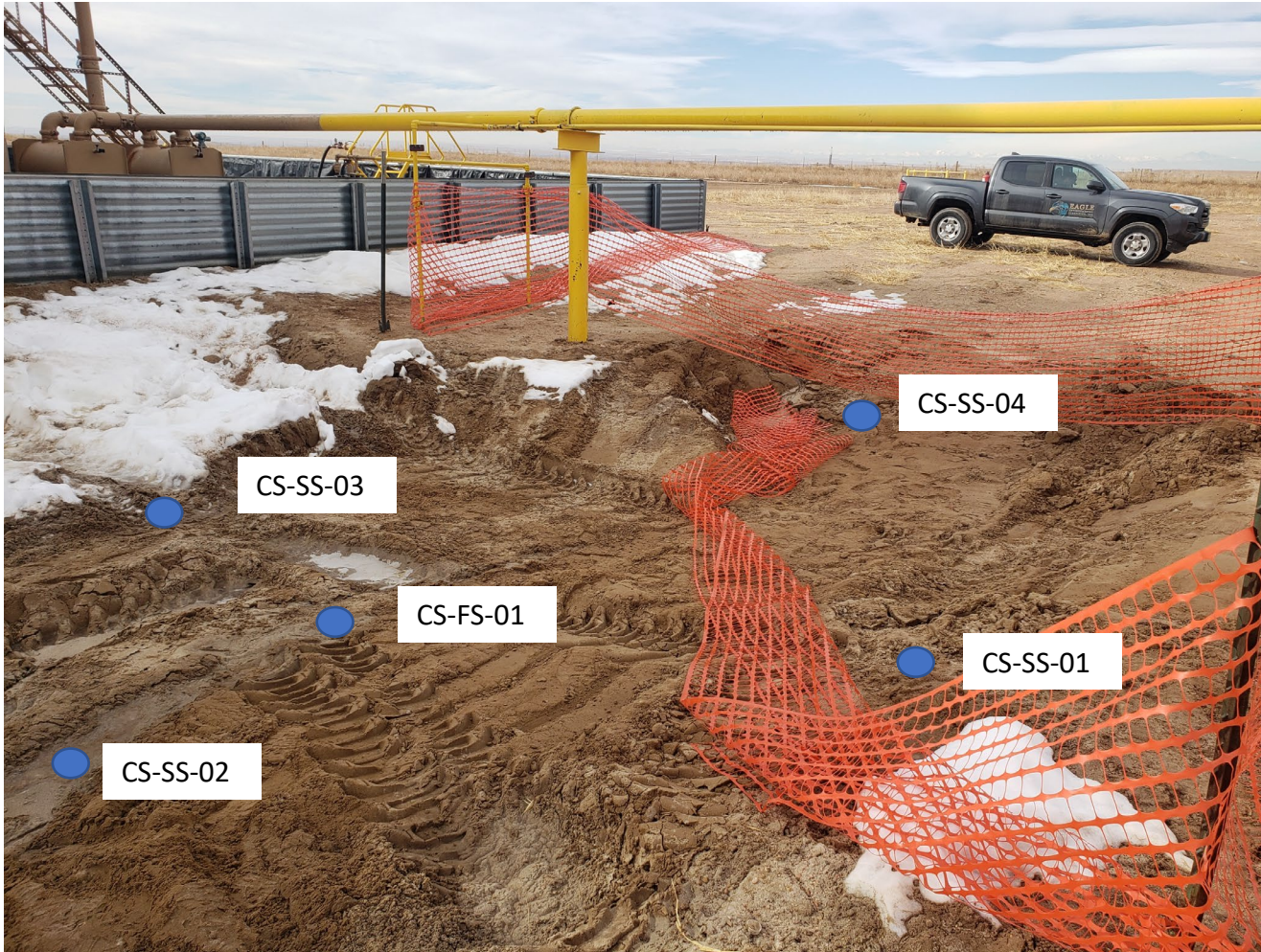
SS-02 @ 0.25' – 1.1 ppm-v

SS-03 @ 0.25' – 3.2 ppm-v

SS-04 @ 0.25' – 2.7 ppm-v

Background-01 @ 4.5' – 4.9 ppm-v

Confirmation Sampling – 02/15/22



Confirmation samples collected following over-excavation of SS-01

No residual petroleum hydrocarbon staining and odor observed

Samples:

CS-SS-01 @ 0.5' – 2.5 ppm-v

CS-SS-02 @ 0.5' – 2.8 ppm-v

CS-SS-03 @ 0.5' – 2.2 ppm-v

CS-SS-04 @ 0.5' – 9.7 ppm-v

CS-FS-01 @ 1' – 3.0 ppm-v

Confirmation Sampling – 03/03/22



Confirmation samples collected following over-excavation of CS-SS-04

No residual petroleum hydrocarbon staining and odor observed

Samples:

CS-SS-05 @ 0.75' – 4.1 ppm-v

CS-SS-06 @ 0.75' – 6.3 ppm-v

CS-SS-07 @ 0.75' – 1.6 ppm-v

CS-FS-02 @ 1' – 6.8 ppm-v



ATTACHMENT B

Laboratory Analytical Reports



February 07, 2022

Eagle Environmental Consulting, Inc.

Martin C Eckert III

8000 W 44th Ave

Wheat Ridge CO 80033

Project Name - Bonanza - Antelope B-33

Project Number - -

Attached are your analytical results for Bonanza - Antelope B-33 received by Origins Laboratory, Inc. January 24, 2022. This project is associated with Origins project number Y201431-01.

The analytical results in the following report were analyzed under the guidelines of EPA Methods. These methods are identified as follows; "SW" are defined in SW-846, "EPA" are defined in 40CFR part 136 and "SM" are defined in the most current revision of Standard Methods For the Examination of Water and Wastewater.

The analytical results apply specifically to the samples and analyses specified per the attached Chain of Custody. As such, this report shall not be reproduced except in full, without the written approval of Origin's laboratory.

Unless otherwise noted, the analytical results for all soil samples are reported on a wet weight basis. All analytical analyses were performed under NELAP guidelines unless noted by a data qualifier.

Any holding time exceedances, deviations from the method specifications or deviations from Origins Laboratory's Standard Operating Procedures are outlined in the case narrative.

Thank you for selecting Origins for your analytical needs. Please contact us with any questions concerning this report, or if we can help with anything at all.

Origins Laboratory, Inc.
303.433.1322
o-squad@oelabinc.com



1725 Elk Place, Denver, CO 80211 | Phone: 303.433.1322 | Fax: 303.265.9645

Eagle Environmental Consulting, Inc.

8000 W 44th Ave

Wheat Ridge CO 80033

Martin C Eckert III

Project Number: -

Project: Bonanza - Antelope B-33

CROSS REFERENCE REPORT

Sample ID	Laboratory ID	Matrix	Date Sampled	Date Received
SS-01@0.5'	Y201431-01	Soil	January 24, 2022 12:56	01/24/2022 16:41

Origins Laboratory, Inc.



The results in this report apply to the samples analyzed in accordance with the chain of custody document. This analytical report must be reproduced in its entirety.

Eagle Environmental Consulting, Inc.
8000 W 44th Ave
Wheat Ridge CO 80033

Martin C Eckert III
Project Number: -
Project: Bonanza - Antelope B-33

ORIGINS
LABORATORY, INC

www.originslaboratory.com

1201431

page 1 of 1

Client: Eagle Environmental Consulting
Address: 8000 W 44th Ave
Wheat Ridge, CO 80033
Telephone Number: 303-433-0479
Email Address: mce3@eagle-enviro.com

Project Manager: Martin Eckert III
Project Name: Antelope B-33
Project Number:
Samples Collected By: TC

1725 Elk Place | Denver, CO 80211 | Phone: 303.433.1322 | Fax: 303.265.9645

Sample ID Description	Date Sampled	Time Sampled	# of Containers	Preservative				Matrix	Analysis	Sample Instructions
				Unpreserved	HCl	HNO ₃	Other			
SS-01 @ 0.5'	01-24-22	1256	2	X				Soil	GC, SAR, pH	1
								Groundwater	Saturated Pore Prep	2
								Other		3
								GC, SAR, pH		4
										5
										6
										7
										8
										9
										10

Relinquished By: Trevor Capile Date: 01-24-22 Time: 1641
Relinquished By: Received By: Date: 01-24-22 Time: 1641

Turnaround Time: Same Day ☐ 24 Hr ☐ 48 Hr ☐ 72 Hr ☒ Standard

Bill to Luke

Temp Received: 19

Date Results Needed: 01-24-22

Origins Laboratory, Inc.

Jordan A. Merrill

Jordan A. Merrill, Project Manager

The results in this report apply to the samples analyzed in accordance with the chain of custody document. This analytical report must be reproduced in its entirety.

Eagle Environmental Consulting, Inc.

8000 W 44th Ave

Wheat Ridge CO 80033

Martin C Eckert III

Project Number: -

Project: Bonanza - Antelope B-33

Origins Laboratory

F-012207-01-R1
Effective Date: 01/09/12

Sample Receipt Checklist

Origins Work Order: 1201431

Client: Eagle

Client Project ID: Antelope B-33

Checklist Completed by: JA

Shipped Via: HD

(UPS, FedEx, Hand Delivered, Pick-up, etc.)

Date/time completed: 1/24/12

Airbill #: NA

Matrix(s) Received: (Check all that apply): / Soil/Solid / Water / Other: /

Cooler Number/Temperature: 1 11.9 °C / / °C / / °C (Describe)

Thermometer ID: T003

Requirement Description	Yes	No	N/A	Comments (if any)
If samples require cooling, was the temperature between 0°C to ≤ 6°C ⁽¹⁾ ?	<u>/</u>			
Is there ice present (document if blue ice is used)?	<u>/</u>			
Are custody seals present on cooler? (if so, document in comments if they are signed and dated, broken or intact)		<u>/</u>		
Are custody seals present on each sample container? (if so, document in comments if they are signed and dated, broken or intact)		<u>/</u>		
Were all samples received intact ⁽¹⁾ ?	<u>/</u>			
Was adequate sample volume provided ⁽¹⁾ ?	<u>/</u>			
Are short holding time analytes or samples with HTs due within 48 hours present ⁽¹⁾ ?		<u>/</u>		
Is a chain-of-custody (COC) present and filled out completely ⁽¹⁾ ?	<u>/</u>			
Does the COC agree with the number and type of sample bottles received ⁽¹⁾ ?	<u>/</u>			
Do the sample IDs on the bottle labels match the COC ⁽¹⁾ ?	<u>/</u>			
Is the COC properly relinquished by the client with date and time recorded ⁽¹⁾ ?	<u>/</u>			
For volatiles in water – is there headspace (> ¼ inch bubble) present? If yes, contact client and note in narrative.			<u>/</u>	
Are samples preserved that require preservation and was it checked ⁽¹⁾ ? (note ID of confirmation instrument used in comments) / (preservation is not confirmed for subcontracted analyses in order to insure sample integrity)(pH < 2 for samples preserved with HNO ₃ , HCL, H ₂ SO ₄) / (pH > 10 for samples preserved with NaAsO ₂ +NaOH, ZnAc+NaOH)			<u>/</u>	
Additional Comments (if any):				

⁽¹⁾If NO, then contact the client before proceeding with analysis and note date/time and person contacted as well as the corrective action to in the additional comments (above) and the case narrative.

Reviewed by (Project Manager) JA

Date/Time Reviewed 1-25-12

Origins Laboratory, Inc.

Jordan A. Merrill

The results in this report apply to the samples analyzed in accordance with the chain of custody document. This analytical report must be reproduced in its entirety.

Eagle Environmental Consulting, Inc.
8000 W 44th Ave
Wheat Ridge CO 80033

Martin C Eckert III
Project Number: -
Project: Bonanza - Antelope B-33

SS-01@0.5'

1/24/2022 12:56:00PM

Analyte	Result	Reporting Limit	Units	Dilution	Batch	Analyst	Prepared	Analyzed	Notes
---------	--------	-----------------	-------	----------	-------	---------	----------	----------	-------

Y201431-01 (Soil)
Origins Laboratory, Inc.

Boron (DTPA Sorbitol)

Boron	1.85	0.197	mg/L	1	B2A2504	KAP	01/25/2022	01/26/2022	
-------	------	-------	------	---	---------	-----	------------	------------	--

DRO/ORO by EPA 8015D

Diesel (C10-C28)	ND	25.0	mg/kg	1	B2A2619	EPC	01/26/2022	01/28/2022	U
Residual Range Organics (C28-C40)	ND	100	"	"	"	EPC	"	"	U

Surrogate: o-Terphenyl	90.7 %	50-150			"	"	"	
------------------------	--------	--------	--	--	---	---	---	--

GBTEX+TMBs by 8260D

1,2,4-Trimethylbenzene	ND	0.00200	mg/kg	1	B2A2626	ZZZ	01/26/2022	02/04/2022	U
1,3,5-Trimethylbenzene	ND	0.00200	"	"	"	ZZZ	"	"	U
Benzene	ND	0.00200	"	"	"	ZZZ	"	"	U
Ethylbenzene	ND	0.00200	"	"	"	ZZZ	"	"	U
Toluene	ND	0.00200	"	"	"	ZZZ	"	"	U
Xylenes, total	ND	0.00200	"	"	"	ZZZ	"	"	U
Gasoline Range Hydrocarbons	ND	0.200	"	"	"	ZZZ	"	"	U

Surrogate: 1,2-Dichloroethane-d4	99.1 %	70-130			"	"	02/04/2022
Surrogate: Toluene-d8	109 %	70-130			"	"	"
Surrogate: 4-Bromofluorobenzene	100 %	70-130			"	"	"

Metals by Saturated Paste by EPA 6010

Origins Laboratory, Inc.



The results in this report apply to the samples analyzed in accordance with the chain of custody document. This analytical report must be reproduced in its entirety.

Eagle Environmental Consulting, Inc.
8000 W 44th Ave
Wheat Ridge CO 80033

Martin C Eckert III
Project Number: -
Project: Bonanza - Antelope B-33

SS-01@0.5'

1/24/2022 12:56:00PM

Analyte	Result	Reporting Limit	Units	Dilution	Batch	Analyst	Prepared	Analyzed	Notes
---------	--------	-----------------	-------	----------	-------	---------	----------	----------	-------

Y201431-01 (Soil)

Origins Laboratory, Inc.

Metals by Saturated Paste by EPA 6010

Calcium	2.11	0.499	meq/L	10	[CALC]	KAP	01/25/2022	01/26/2022
Magnesium	ND	0.823	"	"	"	KAP	"	"
Sodium	2.22	0.435	"	"	"	KAP	"	"

pH in Soil by 9045D

pH	7.53		pH Units	1	B2A2505	ACC	01/25/2022	01/26/2022
----	------	--	----------	---	---------	-----	------------	------------

SAR by 20B Saturated Paste

SAR	1.91		SAR	1	B2A2503	KAP	01/25/2022	01/26/2022
-----	------	--	-----	---	---------	-----	------------	------------

Specific Conductance Mod. 9050A

Specific Conductance (EC)	3.99	0.00500	mmhos/cm	1	B2A2506	ACC	01/25/2022	01/26/2022
---------------------------	------	---------	----------	---	---------	-----	------------	------------

Waypoint Analytical, Inc.

PAH by 8270D SIM

1-Methylnaphthalene	0.0188	0.00067	mg/Kg	1	L597182		01/31/2022	02/01/2022
2-Methylnaphthalene	0.0165	0.00067	"	"	"		"	"
Acenaphthene	0.00135	0.00067	"	"	"		"	"
Anthracene	ND	0.00067	"	"	"		"	"
Benzo(a)anthracene	ND	0.00067	"	"	"		"	"

Origins Laboratory, Inc.



The results in this report apply to the samples analyzed in accordance with the chain of custody document. This analytical report must be reproduced in its entirety.

Eagle Environmental Consulting, Inc.
8000 W 44th Ave
Wheat Ridge CO 80033

Martin C Eckert III
Project Number: -
Project: Bonanza - Antelope B-33

SS-01@0.5'

1/24/2022 12:56:00PM

Analyte	Result	Reporting Limit	Units	Dilution	Batch	Analyst	Prepared	Analyzed	Notes
---------	--------	-----------------	-------	----------	-------	---------	----------	----------	-------

Y201431-01 (Soil)
Waypoint Analytical, Inc.

PAH by 8270D SIM

Benzo(a)pyrene	ND	0.00067	mg/Kg	1	L597182		01/31/2022	02/01/2022	
Benzo(b)fluoranthene	ND	0.00067	"	"	"		"	"	
Benzo(k)fluoranthene	ND	0.00067	"	"	"		"	"	
Chrysene	0.00256	0.00067	"	"	"		"	"	
Dibenz(a,h)anthracene	ND	0.00067	"	"	"		"	"	
Fluoranthene	ND	0.00067	"	"	"		"	"	
Fluorene	0.00563	0.00067	"	"	"		"	"	
Indeno(1,2,3-cd)pyrene	ND	0.00067	"	"	"		"	"	
Naphthalene	0.0021	0.00067	"	"	"		"	"	
Pyrene	0.0014	0.00067	"	"	"		"	"	
Surrogate: 2-Fluorobiphenyl	63 %	33-115			"		"	"	
Surrogate: 4-Terphenyl-d14	74.7 %	33-122			"		"	"	
Surrogate: Nitrobenzene-d5	64.5 %	29-110			"		"	"	

Total Metals by 6020B

Arsenic	1.34	0.25	mg/Kg	5	L596446		01/26/2022	01/28/2022	
Barium	26.9	0.25	"	"	"		"	"	
Cadmium	0.0416	0.25	"	"	"		"	"	J
Copper	1.84	0.25	"	"	"		"	"	
Lead	2.96	0.25	"	"	"		"	"	
Nickel	1.86	0.25	"	"	"		"	"	

Origins Laboratory, Inc.



The results in this report apply to the samples analyzed in accordance with the chain of custody document. This analytical report must be reproduced in its entirety.

Eagle Environmental Consulting, Inc.
8000 W 44th Ave
Wheat Ridge CO 80033

Martin C Eckert III
Project Number: -
Project: Bonanza - Antelope B-33

SS-01@0.5'

1/24/2022 12:56:00PM

Analyte	Result	Reporting Limit	Units	Dilution	Batch	Analyst	Prepared	Analyzed	Notes
---------	--------	--------------------	-------	----------	-------	---------	----------	----------	-------

Y201431-01 (Soil)

Waypoint Analytical, Inc.

Total Metals by 6020B

Selenium	0.192	0.25	mg/Kg	5	L596446	01/26/2022	01/28/2022	J
Silver	ND	0.25	"	"	"	"	"	
Zinc	9.51	2.5	"	"	"	"	"	

Total Metals by 7196A

Chromium, Hexavalent	ND	0.515	mg/Kg	1	L597269	01/24/2022	02/01/2022	
----------------------	----	-------	-------	---	---------	------------	------------	--

Origins Laboratory, Inc.



The results in this report apply to the samples analyzed in accordance with the chain of custody document. This analytical report must be reproduced in its entirety.

Eagle Environmental Consulting, Inc.

8000 W 44th Ave

Wheat Ridge CO 80033

Martin C Eckert III

Project Number: -

Project: Bonanza - Antelope B-33

Extractable Petroleum Hydrocarbons by 8015D - Quality Control

Origins Laboratory, Inc.

Analyte	Result	Reporting Limit	Units	Spike Level	Source Result	%REC	%REC Limits	RPD	RPD Limit	Notes
---------	--------	-----------------	-------	-------------	---------------	------	-------------	-----	-----------	-------

Batch B2A2619 - EPA 3550B

Blank (B2A2619-BLK1)

Prepared: 01/26/2022 Analyzed: 01/28/2022

Diesel (C10-C28)	ND	25.0	mg/kg							U
Residual Range Organics (C28-C40)	ND	100	"							U
Surrogate: o-Terphenyl	25		"	24.9		101	50-150			

Origins Laboratory, Inc.



The results in this report apply to the samples analyzed in accordance with the chain of custody document. This analytical report must be reproduced in its entirety.

Jordan A. Merrill, Project Manager

Eagle Environmental Consulting, Inc.

8000 W 44th Ave

Wheat Ridge CO 80033

Martin C Eckert III

Project Number: -

Project: Bonanza - Antelope B-33

Extractable Petroleum Hydrocarbons by 8015D - Quality Control

Origins Laboratory, Inc.

Analyte	Result	Reporting Limit	Units	Spike Level	Source Result	%REC	%REC Limits	RPD	RPD Limit	Notes
---------	--------	-----------------	-------	-------------	---------------	------	-------------	-----	-----------	-------

Batch B2A2619 - EPA 3550B

LCS (B2A2619-BS1)

Prepared: 01/26/2022 Analyzed: 01/28/2022

Diesel (C10-C28)	496	25.0	mg/kg	500		99.3	70-130			
Residual Range Organics (C28-C40)	436	100	"	500		87.2	70-130			
Surrogate: o-Terphenyl	23		"	24.9		93.5	50-150			

Origins Laboratory, Inc.



The results in this report apply to the samples analyzed in accordance with the chain of custody document. This analytical report must be reproduced in its entirety.

Jordan A. Merrill, Project Manager

Eagle Environmental Consulting, Inc.

8000 W 44th Ave

Wheat Ridge CO 80033

Martin C Eckert III

Project Number: -

Project: Bonanza - Antelope B-33

Extractable Petroleum Hydrocarbons by 8015D - Quality Control

Origins Laboratory, Inc.

Analyte	Result	Reporting Limit	Units	Spike Level	Source Result	%REC	%REC Limits	RPD	RPD Limit	Notes
---------	--------	-----------------	-------	-------------	---------------	------	-------------	-----	-----------	-------

Batch B2A2619 - EPA 3550B

Matrix Spike (B2A2619-MS1)		Source: Y201431-01			Prepared: 01/26/2022 Analyzed: 01/28/2022					
Diesel (C10-C28)	539	25.0	mg/kg	500	ND	108	70-130			
Residual Range Organics (C28-C40)	447	100	"	500	ND	89.4	70-130			
Surrogate: o-Terphenyl	25		"	24.9		100	50-150			

Origins Laboratory, Inc.



The results in this report apply to the samples analyzed in accordance with the chain of custody document. This analytical report must be reproduced in its entirety.

Eagle Environmental Consulting, Inc.
8000 W 44th Ave
Wheat Ridge CO 80033

Martin C Eckert III
Project Number: -
Project: Bonanza - Antelope B-33

Extractable Petroleum Hydrocarbons by 8015D - Quality Control Origins Laboratory, Inc.

Analyte	Result	Reporting Limit	Units	Spike Level	Source Result	%REC	%REC Limits	RPD	RPD Limit	Notes
---------	--------	-----------------	-------	-------------	---------------	------	-------------	-----	-----------	-------

Batch B2A2619 - EPA 3550B

Matrix Spike Dup (B2A2619-MSD1)		Source: Y201431-01			Prepared: 01/26/2022 Analyzed: 01/28/2022					
Diesel (C10-C28)	532	25.0	mg/kg	500	ND	106	70-130	1.16	35	
Residual Range Organics (C28-C40)	450	100	"	500	ND	89.9	70-130	0.543	35	
Surrogate: o-Terphenyl	25		"	24.9		101	50-150			

Origins Laboratory, Inc.



The results in this report apply to the samples analyzed in accordance with the chain of custody document. This analytical report must be reproduced in its entirety.

Jordan A. Merrill, Project Manager

Eagle Environmental Consulting, Inc.
8000 W 44th Ave
Wheat Ridge CO 80033

Martin C Eckert III
Project Number: -
Project: Bonanza - Antelope B-33

Extractable Petroleum Hydrocarbons by 8015D - Quality Control

Origins Laboratory, Inc.

Analyte	Result	Reporting Limit	Units	Spike Level	Source Result	%REC	%REC Limits	RPD	RPD Limit	Notes
Batch B2A2626 - EPA 5030 (soil)										
Blank (B2A2626-BLK1)					Prepared: 01/26/2022 Analyzed: 02/03/2022					
1,2,4-Trimethylbenzene	ND	0.00200	mg/kg							U
1,3,5-Trimethylbenzene	ND	0.00200	"							U
Benzene	ND	0.00200	"							U
Ethylbenzene	ND	0.00200	"							U
Naphthalene	ND	0.0100	"							U
Toluene	ND	0.00200	"							U
Xylenes, total	ND	0.00200	"							U
Gasoline Range Hydrocarbons	ND	0.200	"							U
Surrogate: 1,2-Dichloroethane-d4	0.14		"	0.125		111	70-130			
Surrogate: Toluene-d8	0.13		"	0.125		105	70-130			
Surrogate: 4-Bromofluorobenzene	0.12		"	0.125		97.5	70-130			

Origins Laboratory, Inc.



The results in this report apply to the samples analyzed in accordance with the chain of custody document. This analytical report must be reproduced in its entirety.

Eagle Environmental Consulting, Inc.
8000 W 44th Ave
Wheat Ridge CO 80033

Martin C Eckert III
Project Number: -
Project: Bonanza - Antelope B-33

Volatile Organic Compounds by GC/MS SW846 8260D - Quality Control
Origins Laboratory, Inc.

Analyte	Result	Reporting Limit	Units	Spike Level	Source Result	%REC	%REC Limits	RPD	RPD Limit	Notes
Batch B2A2626 - EPA 5030 (soil)										
LCS (B2A2626-BS1)					Prepared: 01/26/2022 Analyzed: 02/03/2022					
1,2,4-Trimethylbenzene	0.0982	0.00200	mg/kg	0.100		98.2	70-130			
1,3,5-Trimethylbenzene	0.0920	0.00200	"	0.100		92.0	70-130			
Benzene	0.0934	0.00200	"	0.100		93.4	70-130			
Ethylbenzene	0.0937	0.00200	"	0.100		93.7	70-130			
Naphthalene	0.0997	0.0100	"	0.100		99.7	70-130			
Toluene	0.104	0.00200	"	0.100		104	70-130			
o-Xylene	0.0940	0.00200	"	0.100		94.0	70-130			
m,p-Xylene	0.180	0.00400	"	0.200		89.8	70-130			
Surrogate: 1,2-Dichloroethane-d4	0.14		"	0.125		111	70-130			
Surrogate: Toluene-d8	0.13		"	0.125		100	70-130			
Surrogate: 4-Bromofluorobenzene	0.12		"	0.125		97.2	70-130			

Origins Laboratory, Inc.



The results in this report apply to the samples analyzed in accordance with the chain of custody document. This analytical report must be reproduced in its entirety.

Jordan A. Merrill, Project Manager

Eagle Environmental Consulting, Inc.
8000 W 44th Ave
Wheat Ridge CO 80033

Martin C Eckert III
Project Number: -
Project: Bonanza - Antelope B-33

Volatile Organic Compounds by GC/MS SW846 8260D - Quality Control
Origins Laboratory, Inc.

Analyte	Result	Reporting Limit	Units	Spike Level	Source Result	%REC	%REC Limits	RPD	RPD Limit	Notes
Batch B2A2626 - EPA 5030 (soil)										
Matrix Spike (B2A2626-MS1)		Source: Y201415-01			Prepared: 01/26/2022 Analyzed: 02/04/2022					
1,2,4-Trimethylbenzene	0.0501	0.00200	mg/kg	0.100	ND	50.1	70-130			QM-07
1,3,5-Trimethylbenzene	0.0987	0.00200	"	0.100	ND	98.7	70-130			
Benzene	0.0755	0.00200	"	0.100	ND	75.5	70-130			
Ethylbenzene	0.0945	0.00200	"	0.100	ND	94.5	70-130			
Naphthalene	0.0790	0.0100	"	0.100	ND	79.0	70-130			
Toluene	0.0875	0.00200	"	0.100	ND	87.5	70-130			
o-Xylene	0.0978	0.00200	"	0.100	ND	97.8	70-130			
m,p-Xylene	0.151	0.00400	"	0.200	ND	75.5	70-130			
Surrogate: 1,2-Dichloroethane-d4	0.12		"	0.125		99.4	70-130			
Surrogate: Toluene-d8	0.14		"	0.125		109	70-130			
Surrogate: 4-Bromofluorobenzene	0.13		"	0.125		102	70-130			

Origins Laboratory, Inc.



The results in this report apply to the samples analyzed in accordance with the chain of custody document. This analytical report must be reproduced in its entirety.

Eagle Environmental Consulting, Inc.
8000 W 44th Ave
Wheat Ridge CO 80033

Martin C Eckert III
Project Number: -
Project: Bonanza - Antelope B-33

Volatile Organic Compounds by GC/MS SW846 8260D - Quality Control
Origins Laboratory, Inc.

Analyte	Result	Reporting Limit	Units	Spike Level	Source Result	%REC	%REC Limits	RPD	RPD Limit	Notes
Batch B2A2626 - EPA 5030 (soil)										
Matrix Spike Dup (B2A2626-MSD1)			Source: Y201415-01		Prepared: 01/26/2022 Analyzed: 02/04/2022					
1,2,4-Trimethylbenzene	0.0738	0.00200	mg/kg	0.100	ND	73.8	70-130	38.2	20	QM-07
1,3,5-Trimethylbenzene	0.0910	0.00200	"	0.100	ND	91.0	70-130	8.09	20	
Benzene	0.0708	0.00200	"	0.100	ND	70.8	70-130	6.51	20	
Ethylbenzene	0.0860	0.00200	"	0.100	ND	86.0	70-130	9.46	20	
Naphthalene	0.0832	0.0100	"	0.100	ND	83.2	70-130	5.20	20	
Toluene	0.0822	0.00200	"	0.100	ND	82.2	70-130	6.27	20	
o-Xylene	0.0905	0.00200	"	0.100	ND	90.5	70-130	7.77	20	
m,p-Xylene	0.165	0.00400	"	0.200	ND	82.4	70-130	8.65	20	
Surrogate: 1,2-Dichloroethane-d4	0.13		"	0.125		100	70-130			
Surrogate: Toluene-d8	0.13		"	0.125		108	70-130			
Surrogate: 4-Bromofluorobenzene	0.13		"	0.125		101	70-130			

Origins Laboratory, Inc.



The results in this report apply to the samples analyzed in accordance with the chain of custody document. This analytical report must be reproduced in its entirety.

Eagle Environmental Consulting, Inc.
8000 W 44th Ave
Wheat Ridge CO 80033

Martin C Eckert III
Project Number: -
Project: Bonanza - Antelope B-33

Volatile Organic Compounds by GC/MS SW846 8260D - Quality Control

Origins Laboratory, Inc.

Analyte	Result	Reporting Limit	Units	Spike Level	Source Result	%REC	%REC Limits	RPD	RPD Limit	Notes
---------	--------	-----------------	-------	-------------	---------------	------	-------------	-----	-----------	-------

Saturated Paste - Quality Control

Origins Laboratory, Inc.

Analyte	Result	Reporting Limit	Units	Spike Level	Source Result	%REC	%REC Limits	RPD	RPD Limit	Notes
---------	--------	-----------------	-------	-------------	---------------	------	-------------	-----	-----------	-------

Batch B2A2505 - NO PREP

Duplicate (B2A2505-DUP1)

Source: Y201424-04

Prepared: 01/25/2022 Analyzed: 01/26/2022

pH	7.99	pH Units	8.08	1.12	25
----	------	----------	------	------	----

Batch B2A2506 - NO PREP

Blank (B2A2506-BLK1)

Prepared: 01/25/2022 Analyzed: 01/26/2022

Specific Conductance (EC)	0.00110	0.00500	mmhos/cm
---------------------------	---------	---------	----------

Duplicate (B2A2506-DUP1)

Source: Y201424-04

Prepared: 01/25/2022 Analyzed: 01/26/2022

Specific Conductance (EC)	0.533	0.00500	mmhos/cm	0.592	10.3	25
---------------------------	-------	---------	----------	-------	------	----

Origins Laboratory, Inc.



The results in this report apply to the samples analyzed in accordance with the chain of custody document. This analytical report must be reproduced in its entirety.

Jordan A. Merrill, Project Manager

Eagle Environmental Consulting, Inc.
8000 W 44th Ave
Wheat Ridge CO 80033

Martin C Eckert III
Project Number: -
Project: Bonanza - Antelope B-33

PAH by 8270D SIM - Quality Control
Waypoint Analytical, Inc.

Analyte	Result	Reporting Limit	Units	Spike Level	Source Result	%REC	%REC Limits	RPD	RPD Limit	Notes
---------	--------	-----------------	-------	-------------	---------------	------	-------------	-----	-----------	-------

Batch L597182 - 3550B

MSD (L 86497-MSD-L597182)		Source: 86497			Prepared: 01/31/2022 Analyzed: 02/01/2022					
2-Methylnaphthalene	0.111	0.000645	mg/Kg	0.166	0.00112	66.1	30-130	2.7	30	
Fluoranthene	0.13	0.000394	"	0.166	86497	78.3	30-130	3.1	30	
Anthracene	0.121	0.000334	"	0.166	86497	72.8	30-130	3.3	30	
Benzo(a)anthracene	0.136	0.000493	"	0.166	86497	81.9	30-130	4.5	30	
Benzo(a)pyrene	0.135	0.000468	"	0.166	0.000493	81.3	30-130	1.4	30	
Benzo(b)fluoranthene	0.124	0.000585	"	0.166	86497	74.6	30-130	3.1	30	
1-Methylnaphthalene	0.111	0.000364	"	0.166	0.000769	66.4	30-130	1.8	30	
Benzo(k)fluoranthene	0.111	0.000437	"	0.166	86497	66.8	30-130	14.7	30	
Acenaphthene	0.118	0.000304	"	0.166	0.0011	70.4	30-130	0.8	30	
Fluorene	0.119	0.000286	"	0.166	0.00323	69.7	30-130	0.8	30	
Indeno(1,2,3-cd)pyrene	0.119	0.000627	"	0.166	86497	71.6	30-130	18.4	30	
Naphthalene	0.108	0.000484	"	0.166	86497	65	30-130	2.8	30	
Pyrene	0.127	0.000643	"	0.166	0.000809	76	30-130	1.5	30	
Dibenz(a,h)anthracene	0.109	0.000614	"	0.166	86497	65.6	30-130	18.3	30	
Chrysene	0.116	0.000624	"	0.166	0.00162	68.9	30-130	1.7	30	
Surrogate: 4-Terphenyl-d14	68.8		"	0.331	210	68.8	33-122			
Surrogate: 2-Fluorobiphenyl	59.2		"	0.331	189	59.2	33-115			
Surrogate: Nitrobenzene-d5	60.1		"	0.331	191	60.1	29-110			

MS (L 86497-MS-L597182)		Source: 86497			Prepared: 01/31/2022 Analyzed: 02/01/2022					
Indeno(1,2,3-cd)pyrene	0.0989	0.000627	mg/Kg	0.165	86497	59.9	30-130			
Anthracene	0.117	0.000334	"	0.165	86497	70.9	30-130			
Acenaphthene	0.117	0.000304	"	0.165	0.0011	70.2	30-130			
2-Methylnaphthalene	0.108	0.000645	"	0.165	0.00112	64.7	30-130			
1-Methylnaphthalene	0.109	0.000364	"	0.165	0.000769	65.5	30-130			
Pyrene	0.125	0.000643	"	0.165	0.000809	75.2	30-130			
Naphthalene	0.105	0.000484	"	0.165	86497	63.6	30-130			

Origins Laboratory, Inc.



The results in this report apply to the samples analyzed in accordance with the chain of custody document. This analytical report must be reproduced in its entirety.

Eagle Environmental Consulting, Inc.
8000 W 44th Ave
Wheat Ridge CO 80033

Martin C Eckert III
Project Number: -
Project: Bonanza - Antelope B-33

PAH by 8270D SIM - Quality Control
Waypoint Analytical, Inc.

Analyte	Result	Reporting Limit	Units	Spike Level	Source Result	%REC	%REC Limits	RPD	RPD Limit	Notes
---------	--------	-----------------	-------	-------------	---------------	------	-------------	-----	-----------	-------

Batch L597182 - 3550B

MS (L 86497-MS-L597182)		Source: 86497			Prepared: 01/31/2022 Analyzed: 02/01/2022					
Fluorene	0.12	0.000286	mg/Kg	0.165	0.00323	70.7	30-130			
Fluoranthene	0.126	0.000394	"	0.165	86497	76.3	30-130			
Dibenz(a,h)anthracene	0.0907	0.000614	"	0.165	86497	54.9	30-130			
Chrysene	0.114	0.000624	"	0.165	0.00162	68.1	30-130			
Benzo(k)fluoranthene	0.0958	0.000437	"	0.165	86497	58	30-130			
Benzo(b)fluoranthene	0.128	0.000585	"	0.165	86497	77.5	30-130			
Benzo(a)pyrene	0.133	0.000468	"	0.165	0.000493	80.6	30-130			
Benzo(a)anthracene	0.13	0.000493	"	0.165	86497	78.7	30-130			
Surrogate: 4-Terphenyl-d14	67.5		"	0.33	210	67.5	33-122			
Surrogate: 2-Fluorobiphenyl	62.7		"	0.33	189	62.7	33-115			
Surrogate: Nitrobenzene-d5	62.7		"	0.33	191	62.7	29-110			

LCS (LCS-L597182)

Prepared: 01/31/2022 Analyzed: 02/01/2022

Benzo(b)fluoranthene	0.118	0.000585	mg/Kg	0.167		70.6	30-130
Benzo(a)pyrene	0.124	0.000468	"	0.167		74.2	30-130
Pyrene	0.122	0.000643	"	0.167		73	30-130
Naphthalene	0.107	0.000484	"	0.167		64	30-130
Indeno(1,2,3-cd)pyrene	0.101	0.000627	"	0.167		60.4	30-130
Fluorene	0.119	0.000286	"	0.167		71.2	30-130
Fluoranthene	0.125	0.000394	"	0.167		74.8	30-130
Dibenz(a,h)anthracene	0.0964	0.000614	"	0.167		57.7	30-130
Chrysene	0.116	0.000624	"	0.167		69.4	30-130
Benzo(a)anthracene	0.119	0.000493	"	0.167		71.2	30-130
Benzo(k)fluoranthene	0.0981	0.000437	"	0.167		58.7	30-130
Anthracene	0.117	0.000334	"	0.167		70	30-130
Acenaphthene	0.117	0.000304	"	0.167		70	30-130
1-Methylnaphthalene	0.11	0.000364	"	0.167		65.8	30-130

Origins Laboratory, Inc.



The results in this report apply to the samples analyzed in accordance with the chain of custody document. This analytical report must be reproduced in its entirety.

Eagle Environmental Consulting, Inc.
8000 W 44th Ave
Wheat Ridge CO 80033

Martin C Eckert III
Project Number: -
Project: Bonanza - Antelope B-33

PAH by 8270D SIM - Quality Control
Waypoint Analytical, Inc.

Analyte	Result	Reporting Limit	Units	Spike Level	Source Result	%REC	%REC Limits	RPD	RPD Limit	Notes
Batch L597182 - 3550B										
LCS (LCS-L597182)					Prepared: 01/31/2022 Analyzed: 02/01/2022					
2-Methylnaphthalene	0.11	0.000645	mg/Kg	0.167		65.8	30-130			
Surrogate: Nitrobenzene-d5	65.7		"	0.333		65.7	29-110			
Surrogate: 4-Terphenyl-d14	75.6		"	0.333		75.6	33-122			
Surrogate: 2-Fluorobiphenyl	66		"	0.333		66	33-115			
LRB (LRB-L597182)					Prepared: 01/31/2022 Analyzed: 02/01/2022					
Benzo(a)pyrene	ND	0.00067	mg/Kg				-			
Fluorene	ND	0.00067	"				-			
Fluoranthene	ND	0.00067	"				-			
Dibenz(a,h)anthracene	ND	0.00067	"				-			
Chrysene	ND	0.00067	"				-			
Benzo(k)fluoranthene	ND	0.00067	"				-			
Naphthalene	ND	0.00067	"				-			
Pyrene	ND	0.00067	"				-			
1-Methylnaphthalene	ND	0.00067	"				-			
Benzo(a)anthracene	ND	0.00067	"				-			
Anthracene	ND	0.00067	"				-			
Acenaphthene	ND	0.00067	"				-			
2-Methylnaphthalene	ND	0.00067	"				-			
Benzo(b)fluoranthene	ND	0.00067	"				-			
Indeno(1,2,3-cd)pyrene	ND	0.00067	"				-			
Surrogate: Nitrobenzene-d5	65.1		"	0.333		65.1	29-110			
Surrogate: 4-Terphenyl-d14	75		"	0.333		75	33-122			
Surrogate: 2-Fluorobiphenyl	64.8		"	0.333		64.8	33-115			

Origins Laboratory, Inc.



The results in this report apply to the samples analyzed in accordance with the chain of custody document. This analytical report must be reproduced in its entirety.

Eagle Environmental Consulting, Inc.
8000 W 44th Ave
Wheat Ridge CO 80033

Martin C Eckert III
Project Number: -
Project: Bonanza - Antelope B-33

Total Metals by 6020B - Quality Control
Waypoint Analytical, Inc.

Analyte	Result	Reporting Limit	Units	Spike Level	Source Result	%REC	%REC Limits	RPD	RPD Limit	Notes
---------	--------	-----------------	-------	-------------	---------------	------	-------------	-----	-----------	-------

Batch L596446 - 3050B

MSD (L 99759-MSD-L596446)		Source: 99759			Prepared: 01/26/2022 Analyzed: 01/28/2022					
Lead	8.26	0.031	mg/Kg	2.34	5.09	136	75-125	14.9	80	*
Zinc	45.7	0.534	"	23.4	20.3	109	75-125	9.6	80	
Silver	0.428	0.0067	"	0.467	0.0118	92	75-125	1.8	80	
Nickel	8.86	0.0633	"	2.34	5.48	145	75-125	14.1	80	*
Copper	5.9	0.0806	"	2.34	3.05	122	75-125	12.6	80	
Cadmium	0.494	0.0259	"	0.467	0.0581	106	75-125	4.5	80	
Barium	31.5	0.042	"	4.67	24.1	158	75-125	13.9	80	*
Arsenic	3.77	0.0855	"	2.34	1.72	88	75-125	9.7	80	
Selenium	3.67	0.103	"	4.67	0.266	73	75-125	2.4	80	*
MS (L 99759-MS-L596446)		Source: 99759			Prepared: 01/26/2022 Analyzed: 01/28/2022					
Nickel	7.69	0.0633	mg/Kg	2.45	5.48	90	75-125			
Zinc	41.5	0.534	"	24.5	20.3	86	75-125			
Silver	0.436	0.0067	"	0.49	0.0118	89	75-125			
Selenium	3.76	0.103	"	4.9	0.266	71	75-125			*
Arsenic	3.42	0.0855	"	2.45	1.72	69	75-125			*
Barium	27.4	0.042	"	4.9	24.1	67	75-125			*
Cadmium	0.472	0.0259	"	0.49	0.0581	96	75-125			
Copper	5.2	0.0806	"	2.45	3.05	88	75-125			
Lead	7.11	0.031	"	2.45	5.09	82	75-125			
LCS (LCS-L596446)		Prepared: 01/26/2022 Analyzed: 01/28/2022								
Barium	5.03	0.042	mg/Kg	5		101	80-120			
Lead	2.46	0.031	"	2.5		98	80-120			
Nickel	2.49	0.0633	"	2.5		100	80-120			
Zinc	23.7	0.534	"	25		95	80-120			
Silver	0.482	0.0067	"	0.5		96	80-120			

Origins Laboratory, Inc.



The results in this report apply to the samples analyzed in accordance with the chain of custody document. This analytical report must be reproduced in its entirety.

Eagle Environmental Consulting, Inc.
8000 W 44th Ave
Wheat Ridge CO 80033

Martin C Eckert III
Project Number: -
Project: Bonanza - Antelope B-33

Total Metals by 6020B - Quality Control Waypoint Analytical, Inc.

Analyte	Result	Reporting Limit	Units	Spike Level	Source Result	%REC	%REC Limits	RPD	RPD Limit	Notes
---------	--------	-----------------	-------	-------------	---------------	------	-------------	-----	-----------	-------

Batch L596446 - 3050B

LCS (LCS-L596446)

Prepared: 01/26/2022 Analyzed: 01/28/2022

Selenium	4.63	0.103	mg/Kg	5		93	80-120			
Arsenic	2.39	0.0855	"	2.5		96	80-120			
Copper	2.38	0.0806	"	2.5		95	80-120			
Cadmium	0.471	0.0259	"	0.5		94	80-120			

LRB (LRB-L596446)

Prepared: 01/26/2022 Analyzed: 01/28/2022

Arsenic	ND	0.25	mg/Kg				-			
Selenium	ND	0.25	"				-			
Barium	ND	0.25	"				-			
Cadmium	ND	0.25	"				-			
Copper	ND	0.25	"				-			
Lead	ND	0.25	"				-			
Nickel	ND	0.25	"				-			
Zinc	ND	2.5	"				-			
Silver	ND	0.25	"				-			

Origins Laboratory, Inc.



The results in this report apply to the samples analyzed in accordance with the chain of custody document. This analytical report must be reproduced in its entirety.

Eagle Environmental Consulting, Inc.
8000 W 44th Ave
Wheat Ridge CO 80033

Martin C Eckert III
Project Number: -
Project: Bonanza - Antelope B-33

Total Metals by 7196A - Quality Control
Waypoint Analytical, Inc.

Analyte	Result	Reporting Limit	Units	Spike Level	Source Result	%REC	%REC Limits	RPD	RPD Limit	Notes
Batch L597269 -										
DUP (L 99702-DUP)		Source: 99702			Prepared: Analyzed: 02/01/2022					
Chromium, Hexavalent	ND	0.246	mg/Kg		99702	-		0	20	
MS (L 99702-MS)		Source: 99702			Prepared: Analyzed: 02/01/2022					
Chromium, Hexavalent	5.7	0.244	mg/Kg	7.87	99702	72	75-125			*
LCS (LCS)					Prepared: Analyzed: 02/01/2022					
Chromium, Hexavalent	6.41	0.244	mg/Kg	8		80	75-125			
LRB (LRB)					Prepared: Analyzed: 02/01/2022					
Chromium, Hexavalent	ND	0.5	mg/Kg							

Origins Laboratory, Inc.



The results in this report apply to the samples analyzed in accordance with the chain of custody document. This analytical report must be reproduced in its entirety.

Eagle Environmental Consulting, Inc.

8000 W 44th Ave

Wheat Ridge CO 80033

Martin C Eckert III

Project Number: -

Project: Bonanza - Antelope B-33

Notes and Definitions

U Sample is Non-Detect.

QM-07 The spike recovery was outside acceptance limits for the MS and/or MSD. The batch was accepted based on acceptable LCS recovery.

J Estimated Value. Analyte below reported quantitation limit.

* QC Failure

ND Analyte NOT DETECTED at or above the reporting limit

RPD Relative Percent Difference

All soil results are reported at a wet weight basis.

Origins Laboratory, Inc.



The results in this report apply to the samples analyzed in accordance with the chain of custody document. This analytical report must be reproduced in its entirety.

Jordan A. Merrill, Project Manager



February 15, 2022

Eagle Environmental Consulting, Inc.

Martin C Eckert III

8000 W 44th Ave

Wheat Ridge CO 80033

Project Name - Bonanza - Antelope B-33

Project Number - -

Attached are your analytical results for Bonanza - Antelope B-33 received by Origins Laboratory, Inc. February 07, 2022. This project is associated with Origins project number Y202111-01.

The analytical results in the following report were analyzed under the guidelines of EPA Methods. These methods are identified as follows; "SW" are defined in SW-846, "EPA" are defined in 40CFR part 136 and "SM" are defined in the most current revision of Standard Methods For the Examination of Water and Wastewater.

The analytical results apply specifically to the samples and analyses specified per the attached Chain of Custody. As such, this report shall not be reproduced except in full, without the written approval of Origin's laboratory.

Unless otherwise noted, the analytical results for all soil samples are reported on a wet weight basis. All analytical analyses were performed under NELAP guidelines unless noted by a data qualifier.

Any holding time exceedances, deviations from the method specifications or deviations from Origins Laboratory's Standard Operating Procedures are outlined in the case narrative.

Thank you for selecting Origins for your analytical needs. Please contact us with any questions concerning this report, or if we can help with anything at all.

Origins Laboratory, Inc.
303.433.1322
o-squad@oelabinc.com



1725 Elk Place, Denver, CO 80211 | Phone: 303.433.1322 | Fax: 303.265.9645

Eagle Environmental Consulting, Inc.
8000 W 44th Ave
Wheat Ridge CO 80033

Martin C Eckert III
Project Number: -
Project: Bonanza - Antelope B-33

CROSS REFERENCE REPORT

Sample ID	Laboratory ID	Matrix	Date Sampled	Date Received
Background-01@0.5'	Y202111-01	Soil	January 24, 2022 12:59	02/07/2022 14:48

Origins Laboratory, Inc.



The results in this report apply to the samples analyzed in accordance with the chain of custody document. This analytical report must be reproduced in its entirety.

Eagle Environmental Consulting, Inc.
8000 W 44th Ave
Wheat Ridge CO 80033

Martin C Eckert III
Project Number: -
Project: Bonanza - Antelope B-33

Origins Laboratory

F-012207-01-R1
Effective Date: 01/09/12

Sample Receipt Checklist

Origins Work Order: PO2111

Client: ECG

Client Project ID: Antelope B-33

Checklist Completed by: KEH

Shipped Via: HD

(UPS, FedEx, Hand Delivered, Pick-up, etc.)

Date/time completed: 2/7/12

Airbill #: NA

Matrix(s) Received: (Check all that apply): / Soil/Solid / Water / Other: /

Cooler Number/Temperature: 1 10.5 °C / °C / °C (Describe) °C

Thermometer ID: 1003

Requirement Description	Yes	No	N/A	Comments (if any)
If samples require cooling, was the temperature between 0°C to ≤ 6°C ⁽¹⁾ ?	<u>/</u>			
Is there ice present (document if blue ice is used)	<u>/</u>			
Are custody seals present on cooler? (if so, document in comments if they are signed and dated, broken or intact)		<u>/</u>		
Are custody seals present on each sample container? (if so, document in comments if they are signed and dated, broken or intact)		<u>/</u>		
Were all samples received intact ⁽¹⁾ ?	<u>/</u>			
Was adequate sample volume provided ⁽¹⁾ ?	<u>/</u>			
Are short holding time analytes or samples with HTs due within 48 hours present ⁽¹⁾ ?		<u>/</u>		
Is a chain-of-custody (COC) present and filled out completely ⁽¹⁾ ?	<u>/</u>			
Does the COC agree with the number and type of sample bottles received ⁽¹⁾ ?	<u>/</u>			
Do the sample IDs on the bottle labels match the COC ⁽¹⁾ ?	<u>/</u>			
Is the COC properly relinquished by the client with date and time recorded ⁽¹⁾ ?	<u>/</u>			
For volatiles in water – is there headspace (> ¼ inch bubble) present? If yes, contact client and note in narrative.			<u>/</u>	
Are samples preserved that require preservation and was it checked ⁽¹⁾ ? (note ID of confirmation instrument used in comments) / (preservation is not confirmed for subcontracted analyses in order to insure sample integrity)/(pH < 2 for samples preserved with HNO ₃ , HCL, H ₂ SO ₄) / (pH > 10 for samples preserved with NaAsO ₂ +NaOH, ZnAc+NaOH)			<u>/</u>	
Additional Comments (if any):				

⁽¹⁾If NO, then contact the client before proceeding with analysis and note date/time and person contacted as well as the corrective action to in the additional comments (above) and the case narrative.

Reviewed by jm (Project Manager)

2-8-22
Date/Time Reviewed

Origins Laboratory, Inc.

The results in this report apply to the samples analyzed in accordance with the chain of custody document. This analytical report must be reproduced in its entirety.

Eagle Environmental Consulting, Inc.
8000 W 44th Ave
Wheat Ridge CO 80033

Martin C Eckert III
Project Number: -
Project: Bonanza - Antelope B-33

Background-01@0.5'
1/24/2022 12:59:00PM

Analyte	Result	Min Detection Limit	Reporting Limit	Units	Dilution	Batch	Prepared	Analyzed	Notes
---------	--------	------------------------	--------------------	-------	----------	-------	----------	----------	-------

Waypoint Analytical, LLC.
Y202111-01 (Soil)

Total Metals by 6020B

Arsenic	1.33	0.0855	0.25	mg/Kg	5	L598378	02/09/2022	02/14/2022
---------	------	--------	------	-------	---	---------	------------	------------

Origins Laboratory, Inc.



The results in this report apply to the samples analyzed in accordance with the chain of custody document. This analytical report must be reproduced in its entirety.

Eagle Environmental Consulting, Inc.
8000 W 44th Ave
Wheat Ridge CO 80033

Martin C Eckert III
Project Number: -
Project: Bonanza - Antelope B-33

Total Metals by 6020B - Quality Control Waypoint Analytical, LLC.

Analyte	Result	Reporting Limit	Units	Spike Level	Source Result	%REC	%REC Limits	RPD	RPD Limit	Notes
Batch L598378 - 3050B										
MSD (L 99150-MSD-L598378)			Source: 99150		Prepared: 02/09/2022 Analyzed: 02/14/2022					
Arsenic	8.83	0.0855	mg/Kg	2.48	4.44	177	75-125	18.2	80	*
MS (L 99150-MS-L598378)			Source: 99150		Prepared: 02/09/2022 Analyzed: 02/14/2022					
Arsenic	7.35	0.0855	mg/Kg	2.37	4.44	123	75-125			
LCS (LCS-L598378)					Prepared: 02/09/2022 Analyzed: 02/14/2022					
Arsenic	2.62	0.0855	mg/Kg	2.5		105	80-120			
LRB (LRB-L598378)					Prepared: 02/09/2022 Analyzed: 02/14/2022					
Arsenic	ND	0.25	mg/Kg				-			

Origins Laboratory, Inc.



The results in this report apply to the samples analyzed in accordance with the chain of custody document. This analytical report must be reproduced in its entirety.

Jordan A. Merrill, Project Manager

Eagle Environmental Consulting, Inc.

8000 W 44th Ave

Wheat Ridge CO 80033

Martin C Eckert III

Project Number: -

Project: Bonanza - Antelope B-33

Notes and Definitions

* QC Failure

ND Analyte NOT DETECTED at or above the reporting limit

RPD Relative Percent Difference

All soil results are reported on a wet weight basis.

Origins Laboratory, Inc.



The results in this report apply to the samples analyzed in accordance with the chain of custody document. This analytical report must be reproduced in its entirety.

Jordan A. Merrill, Project Manager



February 22, 2022

Eagle Environmental Consulting, Inc.

Martin C Eckert III

8000 W 44th Ave

Wheat Ridge CO 80033

Project Name - Bonanza - Antelope B-33

Project Number - -

Attached are your analytical results for Bonanza - Antelope B-33 received by Origins Laboratory, Inc. February 15, 2022. This project is associated with Origins project number Y202353-01.

The analytical results in the following report were analyzed under the guidelines of EPA Methods. These methods are identified as follows; "SW" are defined in SW-846, "EPA" are defined in 40CFR part 136 and "SM" are defined in the most current revision of Standard Methods For the Examination of Water and Wastewater.

The analytical results apply specifically to the samples and analyses specified per the attached Chain of Custody. As such, this report shall not be reproduced except in full, without the written approval of Origin's laboratory.

Unless otherwise noted, the analytical results for all soil samples are reported on a wet weight basis. All analytical analyses were performed under NELAP guidelines unless noted by a data qualifier.

Any holding time exceedances, deviations from the method specifications or deviations from Origins Laboratory's Standard Operating Procedures are outlined in the case narrative.

Thank you for selecting Origins for your analytical needs. Please contact us with any questions concerning this report, or if we can help with anything at all.

Origins Laboratory, Inc.
303.433.1322
o-squad@oelabinc.com



1725 Elk Place, Denver, CO 80211 | Phone: 303.433.1322 | Fax: 303.265.9645

Eagle Environmental Consulting, Inc.
8000 W 44th Ave
Wheat Ridge CO 80033

Martin C Eckert III
Project Number: -
Project: Bonanza - Antelope B-33

CROSS REFERENCE REPORT

Sample ID	Laboratory ID	Matrix	Date Sampled	Date Received
CS-SS-01@0.5'	Y202353-01	Soil	February 15, 2022 10:18	02/15/2022 16:05
CS-SS-02@0.5'	Y202353-02	Soil	February 15, 2022 10:23	02/15/2022 16:05
CS-SS-03@0.5'	Y202353-03	Soil	February 15, 2022 10:27	02/15/2022 16:05
CS-SS-04@0.5'	Y202353-04	Soil	February 15, 2022 10:31	02/15/2022 16:05
CS-FS-01@1'	Y202353-05	Soil	February 15, 2022 10:34	02/15/2022 16:05

Origins Laboratory, Inc.



Jen Pellegrini For Jordan A. Merrill, Project Manager

The results in this report apply to the samples analyzed in accordance with the chain of custody document. This analytical report must be reproduced in its entirety.

Eagle Environmental Consulting, Inc.
8000 W 44th Ave
Wheat Ridge CO 80033

Martin C Eckert III
Project Number: -
Project: Bonanza - Antelope B-33

ORIGINS
LABORATORY, INC

www.originslaboratory.com

1202353

page 1 of 1

Client: Eagle Environmental Consulting
Address: 8000 W 44th Ave
Wheat Ridge, CO 80033
Telephone Number: 303-433-0479
Email Address: mee3@eagle-enviro.com

Project Manager: Martin Eckert III
Project Name: Antelope B-33
Project Number:
Samples Collected By: TC/AH

Fax: 303.265.9645

Sample ID Description	Date Sampled	Time Sampled	# of Containers	Preservative				Matrix			Analysis	Sample Instructions	
				Unpreserved	HCl	HNO ₃	Other	Groundwater	Soil	Air Summa Canister			Other
CS-SS-01 @ 0.5'	02-15-22	1018	2	X									1
CS-SS-02 @ 0.5'		1023	1										2
CS-SS-03 @ 0.5'		1027	1										3
CS-SS-04 @ 0.5'		1031	1										4
CS-FS-01 @ 1'		1034	1										5
													6
													7
													8
													9
													10

Relinquished By: Trevor Copple Date: 02-15-22 Time: 1605
Relinquished By: Date: Time: 1605

Received By: Date: 2/15/22 Time: 1605
Received By: Date: Time: 1605

Turnaround Time: Same Day ☐ 24 Hr ☐ 48 Hr ☐ 72 Hr ☐ Standard ☒

Bonanza

Date Results Needed

1.0

Temp Received

Bill to Luke

Origins Laboratory, Inc.

Jefe Pellegrini

Jen Pellegrini For Jordan A. Merrill, Project Manager

The results in this report apply to the samples analyzed in accordance with the chain of custody document. This analytical report must be reproduced in its entirety.

Eagle Environmental Consulting, Inc.
8000 W 44th Ave
Wheat Ridge CO 80033

Martin C Eckert III
Project Number: -
Project: Bonanza - Antelope B-33

Origins Laboratory

F-012207-01-R1
Effective Date: 01/09/12

Sample Receipt Checklist

Origins Work Order: Y 202353

Client: Eagle

Client Project ID: Antelope B-33

Checklist Completed by: SG

Shipped Via: HD

(UPS, FedEx, Hand Delivered, Pick-up, etc.)

Date/time completed: 2/16/22

Airbill #: N/A

Matrix(s) Received: (Check all that apply): ☒ Soil/Solid ☐ Water ☐ Other: _____

Cooler Number/Temperature: 1 / 1.0 °C / °C / °C (Describe) / °C

Thermometer ID: T003

Requirement Description	Yes	No	N/A	Comments (if any)
If samples require cooling, was the temperature between 0°C to ≤ 6°C ⁽¹⁾ ?	<input checked="" type="checkbox"/>	<input type="checkbox"/>	<input type="checkbox"/>	
Is there ice present (document if blue ice is used)	<input checked="" type="checkbox"/>	<input type="checkbox"/>	<input type="checkbox"/>	
Are custody seals present on cooler? (if so, document in comments if they are signed and dated, broken or intact)	<input type="checkbox"/>	<input checked="" type="checkbox"/>	<input type="checkbox"/>	
Are custody seals present on each sample container? (if so, document in comments if they are signed and dated, broken or intact)	<input type="checkbox"/>	<input checked="" type="checkbox"/>	<input type="checkbox"/>	
Were all samples received intact ⁽¹⁾ ?	<input checked="" type="checkbox"/>	<input type="checkbox"/>	<input type="checkbox"/>	
Was adequate sample volume provided ⁽¹⁾ ?	<input checked="" type="checkbox"/>	<input type="checkbox"/>	<input type="checkbox"/>	
Are short holding time analytes or samples with HTs due within 48 hours present ⁽¹⁾ ?	<input type="checkbox"/>	<input checked="" type="checkbox"/>	<input type="checkbox"/>	
Is a chain-of-custody (COC) present and filled out completely ⁽¹⁾ ?	<input checked="" type="checkbox"/>	<input type="checkbox"/>	<input type="checkbox"/>	
Does the COC agree with the number and type of sample bottles received ⁽¹⁾ ?	<input checked="" type="checkbox"/>	<input type="checkbox"/>	<input type="checkbox"/>	
Do the sample IDs on the bottle labels match the COC ⁽¹⁾ ?	<input checked="" type="checkbox"/>	<input type="checkbox"/>	<input type="checkbox"/>	
Is the COC properly relinquished by the client with date and time recorded ⁽¹⁾ ?	<input checked="" type="checkbox"/>	<input type="checkbox"/>	<input type="checkbox"/>	
For volatiles in water – is there headspace (> ¼ inch bubble) present? If yes, contact client and note in narrative.	<input type="checkbox"/>	<input type="checkbox"/>	<input checked="" type="checkbox"/>	
Are samples preserved that require preservation and was it checked ⁽¹⁾ ? (note ID of confirmation instrument used in comments) / (preservation is not confirmed for subcontracted analyses in order to ensure sample integrity) (pH < 2 for samples preserved with HNO ₃ , HCL, H ₂ SO ₄) / (pH > 10 for samples preserved with NaAsO ₂ +NaOH, ZnAc+NaOH)	<input type="checkbox"/>	<input type="checkbox"/>	<input checked="" type="checkbox"/>	
Additional Comments (if any):				

⁽¹⁾ If NO, then contact the client before proceeding with analysis and note date/time and person contacted as well as the corrective action to in the additional comments (above) and the case narrative.

Reviewed by (Project Manager) dm

Date/Time Reviewed 2-17-22

Origins Laboratory, Inc.

Jefe Pellegrini

Jen Pellegrini For Jordan A. Merrill, Project Manager

The results in this report apply to the samples analyzed in accordance with the chain of custody document. This analytical report must be reproduced in its entirety.

Eagle Environmental Consulting, Inc.
8000 W 44th Ave
Wheat Ridge CO 80033

Martin C Eckert III
Project Number: -
Project: Bonanza - Antelope B-33

CS-SS-01@0.5'

2/15/2022 10:18:00AM

Analyte	Result	Min Detection Limit	Reporting Limit	Units	Dilution	Batch	Prepared	Analyzed	Notes
---------	--------	---------------------	-----------------	-------	----------	-------	----------	----------	-------

Waypoint Analytical, Inc.
Y202353-01 (Soil)

PAH by 8270D SIM

1-Methylnaphthalene	ND	0.000364	0.00067	mg/Kg	1	L600330	02/18/2022	02/18/2022
2-Methylnaphthalene	ND	0.000645	0.00067	"	"	"	"	"
Acenaphthene	ND	0.000304	0.00067	"	"	"	"	"
Anthracene	ND	0.000334	0.00067	"	"	"	"	"
Benzo(a)anthracene	ND	0.000493	0.00067	"	"	"	"	"
Benzo(a)pyrene	ND	0.000468	0.00067	"	"	"	"	"
Benzo(b)fluoranthene	ND	0.000585	0.00067	"	"	"	"	"
Benzo(k)fluoranthene	ND	0.000437	0.00067	"	"	"	"	"
Chrysene	ND	0.000624	0.00067	"	"	"	"	"
Dibenz(a,h)anthracene	ND	0.000614	0.00067	"	"	"	"	"
Fluoranthene	ND	0.000394	0.00067	"	"	"	"	"
Fluorene	ND	0.000286	0.00067	"	"	"	"	"
Indeno(1,2,3-cd)pyrene	ND	0.000627	0.00067	"	"	"	"	"
Naphthalene	ND	0.000484	0.00067	"	"	"	"	"
Pyrene	ND	0.000643	0.00067	"	"	"	"	"

Surrogate: 2-Fluorobiphenyl	53.7 %	33-115	"	"	"
Surrogate: 4-Terphenyl-d14	62.2 %	33-122	"	"	"
Surrogate: Nitrobenzene-d5	51.5 %	29-110	"	"	"

Origins Laboratory, Inc.



The results in this report apply to the samples analyzed in accordance with the chain of custody document. This analytical report must be reproduced in its entirety.

Jen Pellegrini For Jordan A. Merrill, Project Manager

Eagle Environmental Consulting, Inc.
8000 W 44th Ave
Wheat Ridge CO 80033

Martin C Eckert III
Project Number: -
Project: Bonanza - Antelope B-33

CS-SS-02@0.5'

2/15/2022 10:23:00AM

Analyte	Result	Min Detection Limit	Reporting Limit	Units	Dilution	Batch	Prepared	Analyzed	Notes
---------	--------	---------------------	-----------------	-------	----------	-------	----------	----------	-------

Waypoint Analytical, Inc.
Y202353-02 (Soil)

PAH by 8270D SIM

1-Methylnaphthalene	0.000897	0.000364	0.00067	mg/Kg	1	L600330	02/18/2022	02/18/2022	
2-Methylnaphthalene	0.000817	0.000645	0.00067	"	"	"	"	"	
Acenaphthene	ND	0.000304	0.00067	"	"	"	"	"	
Anthracene	ND	0.000334	0.00067	"	"	"	"	"	
Benzo(a)anthracene	ND	0.000493	0.00067	"	"	"	"	"	
Benzo(a)pyrene	ND	0.000468	0.00067	"	"	"	"	"	
Benzo(b)fluoranthene	ND	0.000585	0.00067	"	"	"	"	"	
Benzo(k)fluoranthene	ND	0.000437	0.00067	"	"	"	"	"	
Chrysene	0.000907	0.000624	0.00067	"	"	"	"	"	
Dibenz(a,h)anthracene	ND	0.000614	0.00067	"	"	"	"	"	
Fluoranthene	0.000502	0.000394	0.00067	"	"	"	"	"	J
Fluorene	0.000506	0.000286	0.00067	"	"	"	"	"	J
Indeno(1,2,3-cd)pyrene	ND	0.000627	0.00067	"	"	"	"	"	
Naphthalene	ND	0.000484	0.00067	"	"	"	"	"	
Pyrene	0.000757	0.000643	0.00067	"	"	"	"	"	

Surrogate: 2-Fluorobiphenyl	53.3 %	33-115	"	"	"
Surrogate: 4-Terphenyl-d14	62.7 %	33-122	"	"	"
Surrogate: Nitrobenzene-d5	51.2 %	29-110	"	"	"

Origins Laboratory, Inc.



The results in this report apply to the samples analyzed in accordance with the chain of custody document. This analytical report must be reproduced in its entirety.

Jen Pellegrini For Jordan A. Merrill, Project Manager

Eagle Environmental Consulting, Inc.
8000 W 44th Ave
Wheat Ridge CO 80033

Martin C Eckert III
Project Number: -
Project: Bonanza - Antelope B-33

CS-SS-03@0.5'

2/15/2022 10:27:00AM

Analyte	Result	Min Detection Limit	Reporting Limit	Units	Dilution	Batch	Prepared	Analyzed	Notes
---------	--------	---------------------	-----------------	-------	----------	-------	----------	----------	-------

Waypoint Analytical, Inc.
Y202353-03 (Soil)

PAH by 8270D SIM

1-Methylnaphthalene	0.00228	0.00182	0.00335	mg/Kg	5	L600330	02/18/2022	02/18/2022	J
2-Methylnaphthalene	ND	0.00323	0.00335	"	"	"	"	"	
Acenaphthene	ND	0.00152	0.00335	"	"	"	"	"	
Anthracene	ND	0.00167	0.00335	"	"	"	"	"	
Benzo(a)anthracene	ND	0.00247	0.00335	"	"	"	"	"	
Benzo(a)pyrene	ND	0.00234	0.00335	"	"	"	"	"	
Benzo(b)fluoranthene	ND	0.00293	0.00335	"	"	"	"	"	
Benzo(k)fluoranthene	ND	0.00219	0.00335	"	"	"	"	"	
Chrysene	ND	0.00312	0.00335	"	"	"	"	"	
Dibenz(a,h)anthracene	ND	0.00307	0.00335	"	"	"	"	"	
Fluoranthene	ND	0.00197	0.00335	"	"	"	"	"	
Fluorene	ND	0.00143	0.00335	"	"	"	"	"	
Indeno(1,2,3-cd)pyrene	ND	0.00314	0.00335	"	"	"	"	"	
Naphthalene	ND	0.00242	0.00335	"	"	"	"	"	
Pyrene	ND	0.00322	0.00335	"	"	"	"	"	

Surrogate: 2-Fluorobiphenyl	45.8 %	33-115	"	"	"
Surrogate: 4-Terphenyl-d14	58.7 %	33-122	"	"	"
Surrogate: Nitrobenzene-d5	45.8 %	29-110	"	"	"

Origins Laboratory, Inc.



The results in this report apply to the samples analyzed in accordance with the chain of custody document. This analytical report must be reproduced in its entirety.

Jen Pellegrini For Jordan A. Merrill, Project Manager

Eagle Environmental Consulting, Inc.
8000 W 44th Ave
Wheat Ridge CO 80033

Martin C Eckert III
Project Number: -
Project: Bonanza - Antelope B-33

CS-SS-04@0.5'

2/15/2022 10:31:00AM

Analyte	Result	Min Detection Limit	Reporting Limit	Units	Dilution	Batch	Prepared	Analyzed	Notes
---------	--------	---------------------	-----------------	-------	----------	-------	----------	----------	-------

Waypoint Analytical, Inc.
Y202353-04 (Soil)

PAH by 8270D SIM

1-Methylnaphthalene	0.392	0.00364	0.0067	mg/Kg	10	L600330	02/18/2022	02/18/2022	
2-Methylnaphthalene	0.346	0.00645	0.0067	"	"	"	"	"	
Acenaphthene	0.0141	0.00304	0.0067	"	"	"	"	"	
Anthracene	0.0057	0.00334	0.0067	"	"	"	"	"	J
Benzo(a)anthracene	ND	0.00493	0.0067	"	"	"	"	"	
Benzo(a)pyrene	ND	0.00468	0.0067	"	"	"	"	"	
Benzo(b)fluoranthene	ND	0.00585	0.0067	"	"	"	"	"	
Benzo(k)fluoranthene	ND	0.00437	0.0067	"	"	"	"	"	
Chrysene	0.0287	0.00624	0.0067	"	"	"	"	"	
Dibenz(a,h)anthracene	ND	0.00614	0.0067	"	"	"	"	"	
Fluoranthene	ND	0.00394	0.0067	"	"	"	"	"	
Fluorene	0.0633	0.00286	0.0067	"	"	"	"	"	
Indeno(1,2,3-cd)pyrene	ND	0.00627	0.0067	"	"	"	"	"	
Naphthalene	0.0756	0.00484	0.0067	"	"	"	"	"	
Pyrene	0.0141	0.00643	0.0067	"	"	"	"	"	

Surrogate: 2-Fluorobiphenyl	47.6 %	33-115	"	"	"
Surrogate: 4-Terphenyl-d14	61.4 %	33-122	"	"	"
Surrogate: Nitrobenzene-d5	47.9 %	29-110	"	"	"

Origins Laboratory, Inc.



The results in this report apply to the samples analyzed in accordance with the chain of custody document. This analytical report must be reproduced in its entirety.

Jen Pellegrini For Jordan A. Merrill, Project Manager

Eagle Environmental Consulting, Inc.
8000 W 44th Ave
Wheat Ridge CO 80033

Martin C Eckert III
Project Number: -
Project: Bonanza - Antelope B-33

CS-FS-01@1'

2/15/2022 10:34:00AM

Analyte	Result	Min Detection Limit	Reporting Limit	Units	Dilution	Batch	Prepared	Analyzed	Notes
---------	--------	---------------------	-----------------	-------	----------	-------	----------	----------	-------

Waypoint Analytical, Inc.
Y202353-05 (Soil)

PAH by 8270D SIM

1-Methylnaphthalene	ND	0.000364	0.00067	mg/Kg	1	L600330	02/18/2022	02/18/2022
2-Methylnaphthalene	ND	0.000645	0.00067	"	"	"	"	"
Acenaphthene	ND	0.000304	0.00067	"	"	"	"	"
Anthracene	ND	0.000334	0.00067	"	"	"	"	"
Benzo(a)anthracene	ND	0.000493	0.00067	"	"	"	"	"
Benzo(a)pyrene	ND	0.000468	0.00067	"	"	"	"	"
Benzo(b)fluoranthene	ND	0.000585	0.00067	"	"	"	"	"
Benzo(k)fluoranthene	ND	0.000437	0.00067	"	"	"	"	"
Chrysene	ND	0.000624	0.00067	"	"	"	"	"
Dibenz(a,h)anthracene	ND	0.000614	0.00067	"	"	"	"	"
Fluoranthene	ND	0.000394	0.00067	"	"	"	"	"
Fluorene	ND	0.000286	0.00067	"	"	"	"	"
Indeno(1,2,3-cd)pyrene	ND	0.000627	0.00067	"	"	"	"	"
Naphthalene	ND	0.000484	0.00067	"	"	"	"	"
Pyrene	ND	0.000643	0.00067	"	"	"	"	"

Surrogate: 2-Fluorobiphenyl	45 %	33-115	"	"	"
Surrogate: 4-Terphenyl-d14	53.5 %	33-122	"	"	"
Surrogate: Nitrobenzene-d5	43.8 %	29-110	"	"	"

Origins Laboratory, Inc.



The results in this report apply to the samples analyzed in accordance with the chain of custody document. This analytical report must be reproduced in its entirety.

Jen Pellegrini For Jordan A. Merrill, Project Manager

Eagle Environmental Consulting, Inc.
8000 W 44th Ave
Wheat Ridge CO 80033

Martin C Eckert III
Project Number: -
Project: Bonanza - Antelope B-33

PAH by 8270D SIM - Quality Control
Waypoint Analytical, Inc.

Analyte	Result	Reporting Limit	Units	Spike Level	Source Result	%REC	%REC Limits	RPD	RPD Limit	Notes
---------	--------	-----------------	-------	-------------	---------------	------	-------------	-----	-----------	-------

Batch L600330 - 3550B

MSD (L 91323-MSD-L600330)		Source: 91323			Prepared: 02/18/2022 Analyzed: 02/18/2022					
Fluoranthene	0.102	0.000394	mg/Kg	0.163	<0.000394	62.5	30-130	10.2	30	
1-Methylnaphthalene	0.0811	0.000364	"	0.163	<0.000364	49.7	30-130	13	30	
Naphthalene	0.0848	0.000484	"	0.163	<0.000484	52	30-130	10.2	30	
Fluorene	0.0865	0.000286	"	0.163	<0.000286	53	30-130	11.2	30	
Pyrene	0.101	0.000643	"	0.163	<0.000643	61.9	30-130	10.3	30	
Dibenz(a,h)anthracene	0.091	0.000614	"	0.163	<0.000614	55.8	30-130	19.8	30	
Chrysene	0.102	0.000624	"	0.163	<0.000624	62.5	30-130	9.3	30	
Benzo(k)fluoranthene	0.0806	0.000437	"	0.163	<0.000437	49.4	30-130	17.1	30	
2-Methylnaphthalene	0.081	0.000645	"	0.163	<0.000645	49.6	30-130	10.3	30	
Indeno(1,2,3-cd)pyrene	0.0711	0.000627	"	0.163	<0.000627	43.6	30-130	21	30	
Benzo(b)fluoranthene	0.0724	0.000585	"	0.163	<0.000585	44.4	30-130	17.2	30	
Acenaphthene	0.0777	0.000304	"	0.163	<0.000304	47.6	30-130	10.1	30	
Anthracene	0.089	0.000334	"	0.163	<0.000334	54.6	30-130	9.8	30	
Benzo(a)anthracene	0.0975	0.000493	"	0.163	<0.000493	59.8	30-130	15.6	30	
Benzo(a)pyrene	0.108	0.000468	"	0.163	<0.000468	66.2	30-130	13.7	30	
Surrogate: Nitrobenzene-d5	52.9		"	0.327	157	52.9	29-110			
Surrogate: 2-Fluorobiphenyl	53.5		"	0.327	166	53.5	33-115			
Surrogate: 4-Terphenyl-d14	65.4		"	0.327	199	65.4	33-122			

MS (L 91323-MS-L600330)		Source: 91323			Prepared: 02/18/2022 Analyzed: 02/18/2022					
Benzo(b)fluoranthene	0.0861	0.000585	mg/Kg	0.165	<0.000585	52.1	30-130			
Indeno(1,2,3-cd)pyrene	0.0878	0.000627	"	0.165	<0.000627	53.2	30-130			
Fluorene	0.0968	0.000286	"	0.165	<0.000286	58.6	30-130			
Fluoranthene	0.113	0.000394	"	0.165	<0.000394	68.4	30-130			
Dibenz(a,h)anthracene	0.111	0.000614	"	0.165	<0.000614	67.2	30-130			
Chrysene	0.112	0.000624	"	0.165	<0.000624	67.8	30-130			
Benzo(k)fluoranthene	0.0957	0.000437	"	0.165	<0.000437	58	30-130			

Origins Laboratory, Inc.



The results in this report apply to the samples analyzed in accordance with the chain of custody document. This analytical report must be reproduced in its entirety.

Jen Pellegrini For Jordan A. Merrill, Project Manager

Eagle Environmental Consulting, Inc.
8000 W 44th Ave
Wheat Ridge CO 80033

Martin C Eckert III
Project Number: -
Project: Bonanza - Antelope B-33

PAH by 8270D SIM - Quality Control
Waypoint Analytical, Inc.

Analyte	Result	Reporting Limit	Units	Spike Level	Source Result	%REC	%REC Limits	RPD	RPD Limit	Notes
---------	--------	-----------------	-------	-------------	---------------	------	-------------	-----	-----------	-------

Batch L600330 - 3550B

MS (L 91323-MS-L600330)		Source: 91323			Prepared: 02/18/2022 Analyzed: 02/18/2022					
Naphthalene	0.094	0.000484	mg/Kg	0.165	<0.000484	56.9	30-130			
Benzo(a)pyrene	0.124	0.000468	"	0.165	<0.000468	75.1	30-130			
Benzo(a)anthracene	0.114	0.000493	"	0.165	<0.000493	69	30-130			
Anthracene	0.0982	0.000334	"	0.165	<0.000334	59.5	30-130			
Acenaphthene	0.086	0.000304	"	0.165	<0.000304	52.1	30-130			
2-Methylnaphthalene	0.0898	0.000645	"	0.165	<0.000645	54.4	30-130			
1-Methylnaphthalene	0.0924	0.000364	"	0.165	<0.000364	56	30-130			
Pyrene	0.112	0.000643	"	0.165	<0.000643	67.8	30-130			
Surrogate: 4-Terphenyl-d14	63.3		"	0.33	199	63.3	33-122			
Surrogate: Nitrobenzene-d5	51.5		"	0.33	157	51.5	29-110			
Surrogate: 2-Fluorobiphenyl	50.9		"	0.33	166	50.9	33-115			

LCS (LCS-L600330)		Prepared: 02/18/2022 Analyzed: 02/18/2022								
Fluoranthene	0.0921	0.000394	mg/Kg	0.167		55.1	30-130			
1-Methylnaphthalene	0.0773	0.000364	"	0.167		46.2	30-130			
Naphthalene	0.0795	0.000484	"	0.167		47.6	30-130			
Fluorene	0.0806	0.000286	"	0.167		48.2	30-130			
Pyrene	0.0912	0.000643	"	0.167		54.6	30-130			
Dibenz(a,h)anthracene	0.0866	0.000614	"	0.167		51.8	30-130			
Chrysene	0.0943	0.000624	"	0.167		56.4	30-130			
Benzo(k)fluoranthene	0.0653	0.000437	"	0.167		39.1	30-130			
2-Methylnaphthalene	0.0754	0.000645	"	0.167		45.1	30-130			
Benzo(a)pyrene	0.102	0.000468	"	0.167		61	30-130			
Benzo(a)anthracene	0.0913	0.000493	"	0.167		54.6	30-130			
Anthracene	0.0836	0.000334	"	0.167		50	30-130			
Acenaphthene	0.073	0.000304	"	0.167		43.7	30-130			
Benzo(b)fluoranthene	0.0637	0.000585	"	0.167		38.1	30-130			

Origins Laboratory, Inc.



The results in this report apply to the samples analyzed in accordance with the chain of custody document. This analytical report must be reproduced in its entirety.

Jen Pellegrini For Jordan A. Merrill, Project Manager

Eagle Environmental Consulting, Inc.
8000 W 44th Ave
Wheat Ridge CO 80033

Martin C Eckert III
Project Number: -
Project: Bonanza - Antelope B-33

PAH by 8270D SIM - Quality Control
Waypoint Analytical, Inc.

Analyte	Result	Reporting Limit	Units	Spike Level	Source Result	%REC	%REC Limits	RPD	RPD Limit	Notes
---------	--------	-----------------	-------	-------------	---------------	------	-------------	-----	-----------	-------

Batch L600330 - 3550B

LCS (LCS-L600330)

Prepared: 02/18/2022 Analyzed: 02/18/2022

Indeno(1,2,3-cd)pyrene	0.0692	0.000627	mg/Kg	0.167		41.4	30-130			
Surrogate: Nitrobenzene-d5	51.3		"	0.333		51.3	29-110			
Surrogate: 4-Terphenyl-d14	63.3		"	0.333		63.3	33-122			
Surrogate: 2-Fluorobiphenyl	52.8		"	0.333		52.8	33-115			

LRB (LRB-L600330)

Prepared: 02/18/2022 Analyzed: 02/18/2022

Chrysene	ND	0.00067	mg/Kg				-			
Dibenz(a,h)anthracene	ND	0.00067	"				-			
Fluoranthene	ND	0.00067	"				-			
Fluorene	ND	0.00067	"				-			
Indeno(1,2,3-cd)pyrene	ND	0.00067	"				-			
Benzo(k)fluoranthene	ND	0.00067	"				-			
Naphthalene	ND	0.00067	"				-			
Benzo(b)fluoranthene	ND	0.00067	"				-			
Benzo(a)pyrene	ND	0.00067	"				-			
Benzo(a)anthracene	ND	0.00067	"				-			
Anthracene	ND	0.00067	"				-			
Acenaphthene	ND	0.00067	"				-			
2-Methylnaphthalene	ND	0.00067	"				-			
1-Methylnaphthalene	ND	0.00067	"				-			
Pyrene	ND	0.00067	"				-			
Surrogate: Nitrobenzene-d5	51.6		"	0.333		51.6	29-110			
Surrogate: 4-Terphenyl-d14	64.8		"	0.333		64.8	33-122			
Surrogate: 2-Fluorobiphenyl	55.8		"	0.333		55.8	33-115			

Origins Laboratory, Inc.



The results in this report apply to the samples analyzed in accordance with the chain of custody document. This analytical report must be reproduced in its entirety.

Jen Pellegrini For Jordan A. Merrill, Project Manager

Eagle Environmental Consulting, Inc.

8000 W 44th Ave

Wheat Ridge CO 80033

Martin C Eckert III

Project Number: -

Project: Bonanza - Antelope B-33

Notes and Definitions

J Estimated Value. Analyte below reported quantitation limit.

ND Analyte NOT DETECTED at or above the reporting limit

RPD Relative Percent Difference

All soil results are reported on a wet weight basis.

Origins Laboratory, Inc.



The results in this report apply to the samples analyzed in accordance with the chain of custody document. This analytical report must be reproduced in its entirety.

Jen Pellegrini For Jordan A. Merrill, Project Manager



March 08, 2022

Eagle Environmental Consulting, Inc.

Martin C Eckert III

8000 W 44th Ave

Wheat Ridge CO 80033

Project Name - Bonanza - Antelope B-33

Project Number - -

Attached are your analytical results for Bonanza - Antelope B-33 received by Origins Laboratory, Inc. March 03, 2022. This project is associated with Origins project number Y203123-01.

The analytical results in the following report were analyzed under the guidelines of EPA Methods. These methods are identified as follows; "SW" are defined in SW-846, "EPA" are defined in 40CFR part 136 and "SM" are defined in the most current revision of Standard Methods For the Examination of Water and Wastewater.

The analytical results apply specifically to the samples and analyses specified per the attached Chain of Custody. As such, this report shall not be reproduced except in full, without the written approval of Origin's laboratory.

Unless otherwise noted, the analytical results for all soil samples are reported on a wet weight basis. All analytical analyses were performed under NELAP guidelines unless noted by a data qualifier.

Any holding time exceedances, deviations from the method specifications or deviations from Origins Laboratory's Standard Operating Procedures are outlined in the case narrative.

Thank you for selecting Origins for your analytical needs. Please contact us with any questions concerning this report, or if we can help with anything at all.

Origins Laboratory, Inc.
303.433.1322
o-squad@oelabinc.com



1725 Elk Place, Denver, CO 80211 | Phone: 303.433.1322 | Fax: 303.265.9645

Eagle Environmental Consulting, Inc.
8000 W 44th Ave
Wheat Ridge CO 80033

Martin C Eckert III
Project Number: -
Project: Bonanza - Antelope B-33

CROSS REFERENCE REPORT

Sample ID	Laboratory ID	Matrix	Date Sampled	Date Received
CS-SS-05@0.75'	Y203123-01	Soil	March 3, 2022 9:14	03/03/2022 16:00
CS-SS-06@0.75'	Y203123-02	Soil	March 3, 2022 9:18	03/03/2022 16:00
CS-SS-07@0.75'	Y203123-03	Soil	March 3, 2022 9:22	03/03/2022 16:00
CS-FS-02@1'	Y203123-04	Soil	March 3, 2022 9:26	03/03/2022 16:00

Origins Laboratory, Inc.



Jen Pellegrini For Jordan A. Bynon, Project Manager

The results in this report apply to the samples analyzed in accordance with the chain of custody document. This analytical report must be reproduced in its entirety.

Eagle Environmental Consulting, Inc.
8000 W 44th Ave
Wheat Ridge CO 80033

Martin C Eckert III
Project Number: -
Project: Bonanza - Antelope B-33

ORIGINS
LABORATORY, INC

7203123

www.originslaboratory.com

page 1 of 1

Client: Eagle Environmental Consulting
Address: 8000 W 44th Ave
Wheat Ridge, CO 80033
Telephone Number: 303-433-0479
Email Address: mce3@eagle-enviro.com

Project Manager: Martin Eckert III
Project Name: Antelope B-33
Project Number: 72
Samples Collected By: TC

1725 Elk Place | Denver, CO 80211 | Phone: 303.433.1322 | Fax: 303.265.9645

Sample ID Description	Date Sampled	Time Sampled	# of Containers	Preservative				Matrix			Analysis	Sample Instructions
				Unpreserved	HCl	HNO ₃	Other	Groundwater	Soil	Air Summa Canister #		
CS-SS-0500.75'	03-03-22	0914	2	X								MILs needed
CS-SS-0600.75'		0918	1									
CS-SS-0700.75'		0922	1									
CS-PS-0801'		0926	1									
												5
												6
												7
												8
												9
												10
Relinquished By: Trevor Goffe	Date: 03-03-22	Time: 1:00		Received By: [Signature]	Date: 3/3/22	Time: 1:00		Turnaround Time: Same Day <input type="checkbox"/> 24 Hr <input type="checkbox"/> 48 Hr <input type="checkbox"/> 72 Hr <input checked="" type="checkbox"/> Standard				
Relinquished By:	Date:	Time:		Received By:	Date:	Time:						

Date Results Needed: Bonanza

Temp Received: 2.1

B.11 to Luke

Origins Laboratory, Inc.

Jefe Pellegrini

Jen Pellegrini For Jordan A. Bynon, Project Manager

The results in this report apply to the samples analyzed in accordance with the chain of custody document. This analytical report must be reproduced in its entirety.

Eagle Environmental Consulting, Inc.
8000 W 44th Ave
Wheat Ridge CO 80033

Martin C Eckert III
Project Number: -
Project: Bonanza - Antelope B-33

Origins Laboratory

F-012207-01-R1
Effective Date: 01/09/12

Sample Receipt Checklist

Origins Work Order: Y203123 Client: Eagle
Client Project ID: Antelope B-33

Checklist Completed by: JK Shipped Via: HD
Date/time completed: 3/4/22 (UPS, FedEx, Hand Delivered, Pick-up, etc.)
Airbill #: N/A

Matrix(s) Received: (Check all that apply): X Soil/Solid Water Other:

Cooler Number/Temperature: 1, 21 °C °C °C °C (Describe)

Thermometer ID: T003

Requirement Description	Yes	No	N/A	Comments (if any)
If samples require cooling, was the temperature between 0°C to ≤ 6°C ⁽¹⁾ ?	<input checked="" type="checkbox"/>	<input type="checkbox"/>	<input type="checkbox"/>	
Is there ice present (document if blue ice is used)	<input checked="" type="checkbox"/>	<input type="checkbox"/>	<input type="checkbox"/>	
Are custody seals present on cooler? (if so, document in comments if they are signed and dated, broken or intact)	<input type="checkbox"/>	<input checked="" type="checkbox"/>	<input type="checkbox"/>	
Are custody seals present on each sample container? (if so, document in comments if they are signed and dated, broken or intact)	<input type="checkbox"/>	<input checked="" type="checkbox"/>	<input type="checkbox"/>	
Were all samples received intact ⁽¹⁾ ?	<input checked="" type="checkbox"/>	<input type="checkbox"/>	<input type="checkbox"/>	
Was adequate sample volume provided ⁽¹⁾ ?	<input checked="" type="checkbox"/>	<input type="checkbox"/>	<input type="checkbox"/>	
Are short holding time analytes or samples with HTs due within 48 hours present ⁽¹⁾ ?	<input type="checkbox"/>	<input checked="" type="checkbox"/>	<input type="checkbox"/>	
Is a chain-of-custody (COC) present and filled out completely ⁽¹⁾ ?	<input checked="" type="checkbox"/>	<input type="checkbox"/>	<input type="checkbox"/>	
Does the COC agree with the number and type of sample bottles received ⁽¹⁾ ?	<input checked="" type="checkbox"/>	<input type="checkbox"/>	<input type="checkbox"/>	
Do the sample IDs on the bottle labels match the COC ⁽¹⁾ ?	<input checked="" type="checkbox"/>	<input type="checkbox"/>	<input type="checkbox"/>	
Is the COC properly relinquished by the client with date and time recorded ⁽¹⁾ ?	<input checked="" type="checkbox"/>	<input type="checkbox"/>	<input type="checkbox"/>	
For volatiles in water – is there headspace (> ½ inch bubble) present? If yes, contact client and note in narrative.	<input type="checkbox"/>	<input type="checkbox"/>	<input checked="" type="checkbox"/>	
Are samples preserved that require preservation and was it checked ⁽¹⁾ ? (note ID of confirmation instrument used in comments) / (preservation is not confirmed for subcontracted analyses in order to insure sample integrity)(pH < 2 for samples preserved with HNO ₃ , HCL, H ₂ SO ₄) / (pH > 10 for samples preserved with NaAsO ₂ +NaOH, ZnAc+NaOH)	<input type="checkbox"/>	<input type="checkbox"/>	<input checked="" type="checkbox"/>	
Additional Comments (if any):				

⁽¹⁾If NO, then contact the client before proceeding with analysis and note date/time and person contacted as well as the corrective action to in the additional comments (above) and the case narrative.

Reviewed by: pm (Project Manager) Date/Time Reviewed: 3-7-22

Origins Laboratory, Inc.

Jefe Pellegrini

Jen Pellegrini For Jordan A. Bynon, Project Manager

The results in this report apply to the samples analyzed in accordance with the chain of custody document. This analytical report must be reproduced in its entirety.

Eagle Environmental Consulting, Inc.
8000 W 44th Ave
Wheat Ridge CO 80033

Martin C Eckert III
Project Number: -
Project: Bonanza - Antelope B-33

CS-SS-05@0.75'

3/3/2022 9:14:00AM

Analyte	Result	Min Detection Limit	Reporting Limit	Units	Dilution	Batch	Prepared	Analyzed	Notes
---------	--------	---------------------	-----------------	-------	----------	-------	----------	----------	-------

Waypoint Analytical, Inc.
Y203123-01 (Soil)

PAH by 8270D SIM

1-Methylnaphthalene	0.00171	0.000364	0.00067	mg/Kg	1	L603269	03/07/2022	03/07/2022	
2-Methylnaphthalene	0.00126	0.000645	0.00067	"	"	"	"	"	
Acenaphthene	ND	0.000304	0.00067	"	"	"	"	"	
Anthracene	ND	0.000334	0.00067	"	"	"	"	"	
Benzo(a)anthracene	ND	0.000493	0.00067	"	"	"	"	"	
Benzo(a)pyrene	ND	0.000468	0.00067	"	"	"	"	"	
Benzo(b)fluoranthene	ND	0.000585	0.00067	"	"	"	"	"	
Benzo(k)fluoranthene	ND	0.000437	0.00067	"	"	"	"	"	
Chrysene	0.000625	0.000624	0.00067	"	"	"	"	"	J
Dibenz(a,h)anthracene	ND	0.000614	0.00067	"	"	"	"	"	
Fluoranthene	ND	0.000394	0.00067	"	"	"	"	"	
Fluorene	0.000636	0.000286	0.00067	"	"	"	"	"	J
Indeno(1,2,3-cd)pyrene	ND	0.000627	0.00067	"	"	"	"	"	
Naphthalene	ND	0.000484	0.00067	"	"	"	"	"	
Pyrene	ND	0.000643	0.00067	"	"	"	"	"	

Surrogate: 2-Fluorobiphenyl	73.2 %	33-115	"	"	"
Surrogate: 4-Terphenyl-d14	83.5 %	33-122	"	"	"
Surrogate: Nitrobenzene-d5	61.9 %	29-110	"	"	"

Origins Laboratory, Inc.



The results in this report apply to the samples analyzed in accordance with the chain of custody document. This analytical report must be reproduced in its entirety.

Jen Pellegrini For Jordan A. Bynon, Project Manager

Eagle Environmental Consulting, Inc.
8000 W 44th Ave
Wheat Ridge CO 80033

Martin C Eckert III
Project Number: -
Project: Bonanza - Antelope B-33

CS-SS-06@0.75'

3/3/2022 9:18:00AM

Analyte	Result	Min Detection Limit	Reporting Limit	Units	Dilution	Batch	Prepared	Analyzed	Notes
---------	--------	---------------------	-----------------	-------	----------	-------	----------	----------	-------

Waypoint Analytical, Inc.
Y203123-02 (Soil)

PAH by 8270D SIM

1-Methylnaphthalene	0.0017	0.000364	0.00067	mg/Kg	1	L603269	03/07/2022	03/07/2022
2-Methylnaphthalene	0.00123	0.000645	0.00067	"	"	"	"	"
Acenaphthene	ND	0.000304	0.00067	"	"	"	"	"
Anthracene	ND	0.000334	0.00067	"	"	"	"	"
Benzo(a)anthracene	ND	0.000493	0.00067	"	"	"	"	"
Benzo(a)pyrene	ND	0.000468	0.00067	"	"	"	"	"
Benzo(b)fluoranthene	ND	0.000585	0.00067	"	"	"	"	"
Benzo(k)fluoranthene	ND	0.000437	0.00067	"	"	"	"	"
Chrysene	0.000689	0.000624	0.00067	"	"	"	"	"
Dibenz(a,h)anthracene	ND	0.000614	0.00067	"	"	"	"	"
Fluoranthene	ND	0.000394	0.00067	"	"	"	"	"
Fluorene	0.000938	0.000286	0.00067	"	"	"	"	"
Indeno(1,2,3-cd)pyrene	ND	0.000627	0.00067	"	"	"	"	"
Naphthalene	ND	0.000484	0.00067	"	"	"	"	"
Pyrene	ND	0.000643	0.00067	"	"	"	"	"

Surrogate: 2-Fluorobiphenyl	72.9 %	33-115	"	"	"
Surrogate: 4-Terphenyl-d14	81.1 %	33-122	"	"	"
Surrogate: Nitrobenzene-d5	62.2 %	29-110	"	"	"

Origins Laboratory, Inc.



The results in this report apply to the samples analyzed in accordance with the chain of custody document. This analytical report must be reproduced in its entirety.

Jen Pellegrini For Jordan A. Bynon, Project Manager

Eagle Environmental Consulting, Inc.
8000 W 44th Ave
Wheat Ridge CO 80033

Martin C Eckert III
Project Number: -
Project: Bonanza - Antelope B-33

CS-SS-07@0.75'

3/3/2022 9:22:00AM

Analyte	Result	Min Detection Limit	Reporting Limit	Units	Dilution	Batch	Prepared	Analyzed	Notes
---------	--------	---------------------	-----------------	-------	----------	-------	----------	----------	-------

Waypoint Analytical, Inc.
Y203123-03 (Soil)

PAH by 8270D SIM

1-Methylnaphthalene	ND	0.000364	0.00067	mg/Kg	1	L603269	03/07/2022	03/07/2022
2-Methylnaphthalene	ND	0.000645	0.00067	"	"	"	"	"
Acenaphthene	ND	0.000304	0.00067	"	"	"	"	"
Anthracene	ND	0.000334	0.00067	"	"	"	"	"
Benzo(a)anthracene	ND	0.000493	0.00067	"	"	"	"	"
Benzo(a)pyrene	ND	0.000468	0.00067	"	"	"	"	"
Benzo(b)fluoranthene	ND	0.000585	0.00067	"	"	"	"	"
Benzo(k)fluoranthene	ND	0.000437	0.00067	"	"	"	"	"
Chrysene	ND	0.000624	0.00067	"	"	"	"	"
Dibenz(a,h)anthracene	ND	0.000614	0.00067	"	"	"	"	"
Fluoranthene	ND	0.000394	0.00067	"	"	"	"	"
Fluorene	ND	0.000286	0.00067	"	"	"	"	"
Indeno(1,2,3-cd)pyrene	ND	0.000627	0.00067	"	"	"	"	"
Naphthalene	ND	0.000484	0.00067	"	"	"	"	"
Pyrene	ND	0.000643	0.00067	"	"	"	"	"

Surrogate: 2-Fluorobiphenyl	70.3 %	33-115	"	"	"
Surrogate: 4-Terphenyl-d14	81.3 %	33-122	"	"	"
Surrogate: Nitrobenzene-d5	60.6 %	29-110	"	"	"

Origins Laboratory, Inc.



The results in this report apply to the samples analyzed in accordance with the chain of custody document. This analytical report must be reproduced in its entirety.

Jen Pellegrini For Jordan A. Bynon, Project Manager

Eagle Environmental Consulting, Inc.
8000 W 44th Ave
Wheat Ridge CO 80033

Martin C Eckert III
Project Number: -
Project: Bonanza - Antelope B-33

CS-FS-02@1'

3/3/2022 9:26:00AM

Analyte	Result	Min Detection Limit	Reporting Limit	Units	Dilution	Batch	Prepared	Analyzed	Notes
---------	--------	---------------------	-----------------	-------	----------	-------	----------	----------	-------

Waypoint Analytical, Inc.
Y203123-04 (Soil)

PAH by 8270D SIM

1-Methylnaphthalene	ND	0.000364	0.00067	mg/Kg	1	L603269	03/07/2022	03/07/2022
2-Methylnaphthalene	ND	0.000645	0.00067	"	"	"	"	"
Acenaphthene	ND	0.000304	0.00067	"	"	"	"	"
Anthracene	ND	0.000334	0.00067	"	"	"	"	"
Benzo(a)anthracene	ND	0.000493	0.00067	"	"	"	"	"
Benzo(a)pyrene	ND	0.000468	0.00067	"	"	"	"	"
Benzo(b)fluoranthene	ND	0.000585	0.00067	"	"	"	"	"
Benzo(k)fluoranthene	ND	0.000437	0.00067	"	"	"	"	"
Chrysene	ND	0.000624	0.00067	"	"	"	"	"
Dibenz(a,h)anthracene	ND	0.000614	0.00067	"	"	"	"	"
Fluoranthene	ND	0.000394	0.00067	"	"	"	"	"
Fluorene	ND	0.000286	0.00067	"	"	"	"	"
Indeno(1,2,3-cd)pyrene	ND	0.000627	0.00067	"	"	"	"	"
Naphthalene	ND	0.000484	0.00067	"	"	"	"	"
Pyrene	ND	0.000643	0.00067	"	"	"	"	"

Surrogate: 2-Fluorobiphenyl	75.9 %	33-115	"	"	"
Surrogate: 4-Terphenyl-d14	87.3 %	33-122	"	"	"
Surrogate: Nitrobenzene-d5	63.6 %	29-110	"	"	"

Origins Laboratory, Inc.



The results in this report apply to the samples analyzed in accordance with the chain of custody document. This analytical report must be reproduced in its entirety.

Jen Pellegrini For Jordan A. Bynon, Project Manager

Eagle Environmental Consulting, Inc.
8000 W 44th Ave
Wheat Ridge CO 80033

Martin C Eckert III
Project Number: -
Project: Bonanza - Antelope B-33

PAH by 8270D SIM - Quality Control
Waypoint Analytical, Inc.

Analyte	Result	Reporting Limit	Units	Spike Level	Source Result	%REC	%REC Limits	RPD	RPD Limit	Notes
---------	--------	-----------------	-------	-------------	---------------	------	-------------	-----	-----------	-------

Batch L603269 - 3550B

MSD (L 86094-MSD-L603269)		Source: 86094			Prepared: 03/07/2022 Analyzed: 03/07/2022					
Fluoranthene	0.109	0.000394	mg/Kg	0.164	<0.000394	66.4	30-130	3.7	30	
1-Methylnaphthalene	0.097	0.000364	"	0.164	<0.000364	59.1	30-130	4.2	30	
Naphthalene	0.0956	0.000484	"	0.164	<0.000484	58.2	30-130	3.8	30	
Fluorene	0.0912	0.000286	"	0.164	<0.000286	55.6	30-130	0.1	30	
Pyrene	0.11	0.000643	"	0.164	<0.000643	67	30-130	4.6	30	
Dibenz(a,h)anthracene	0.118	0.000614	"	0.164	<0.000614	71.9	30-130	3.4	30	
Chrysene	0.109	0.000624	"	0.164	<0.000624	66.4	30-130	0.9	30	
Benzo(k)fluoranthene	0.107	0.000437	"	0.164	<0.000437	65.2	30-130	7.1	30	
2-Methylnaphthalene	0.0899	0.000645	"	0.164	<0.000645	54.8	30-130	4.3	30	
Indeno(1,2,3-cd)pyrene	0.084	0.000627	"	0.164	<0.000627	51.2	30-130	2.5	30	
Benzo(b)fluoranthene	0.0977	0.000585	"	0.164	<0.000585	59.5	30-130	10.3	30	
Acenaphthene	0.0834	0.000304	"	0.164	<0.000304	50.8	30-130	1.4	30	
Anthracene	0.101	0.000334	"	0.164	<0.000334	61.5	30-130	4.7	30	
Benzo(a)anthracene	0.106	0.000493	"	0.164	<0.000493	64.6	30-130	1.9	30	
Benzo(a)pyrene	0.121	0.000468	"	0.164	<0.000468	73.7	30-130	3.3	30	
Surrogate: Nitrobenzene-d5	55.9		"	0.329	194	55.9	29-110			
Surrogate: 2-Fluorobiphenyl	66.5		"	0.329	217	66.5	33-115			
Surrogate: 4-Terphenyl-d14	82		"	0.329	279	82	33-122			

MS (L 86094-MS-L603269)		Source: 86094			Prepared: 03/07/2022 Analyzed: 03/07/2022					
Benzo(b)fluoranthene	0.0881	0.000585	mg/Kg	0.166	<0.000585	53	30-130			
Indeno(1,2,3-cd)pyrene	0.0862	0.000627	"	0.166	<0.000627	51.9	30-130			
Fluorene	0.0911	0.000286	"	0.166	<0.000286	54.8	30-130			
Fluoranthene	0.105	0.000394	"	0.166	<0.000394	63.2	30-130			
Dibenz(a,h)anthracene	0.114	0.000614	"	0.166	<0.000614	68.6	30-130			
Chrysene	0.108	0.000624	"	0.166	<0.000624	65	30-130			
Benzo(k)fluoranthene	0.0996	0.000437	"	0.166	<0.000437	60	30-130			

Origins Laboratory, Inc.



The results in this report apply to the samples analyzed in accordance with the chain of custody document. This analytical report must be reproduced in its entirety.

Jen Pellegrini For Jordan A. Bynon, Project Manager

Eagle Environmental Consulting, Inc.
8000 W 44th Ave
Wheat Ridge CO 80033

Martin C Eckert III
Project Number: -
Project: Bonanza - Antelope B-33

PAH by 8270D SIM - Quality Control
Waypoint Analytical, Inc.

Analyte	Result	Reporting Limit	Units	Spike Level	Source Result	%REC	%REC Limits	RPD	RPD Limit	Notes
---------	--------	-----------------	-------	-------------	---------------	------	-------------	-----	-----------	-------

Batch L603269 - 3550B

MS (L 86094-MS-L603269)		Source: 86094			Prepared: 03/07/2022 Analyzed: 03/07/2022					
Naphthalene	0.092	0.000484	mg/Kg	0.166	<0.000484	55.4	30-130			
Benzo(a)pyrene	0.117	0.000468	"	0.166	<0.000468	70.4	30-130			
Benzo(a)anthracene	0.104	0.000493	"	0.166	<0.000493	62.6	30-130			
Anthracene	0.0963	0.000334	"	0.166	<0.000334	58	30-130			
Acenaphthene	0.0822	0.000304	"	0.166	<0.000304	49.5	30-130			
2-Methylnaphthalene	0.0861	0.000645	"	0.166	<0.000645	51.8	30-130			
1-Methylnaphthalene	0.093	0.000364	"	0.166	<0.000364	56	30-130			
Pyrene	0.105	0.000643	"	0.166	<0.000643	63.2	30-130			
Surrogate: 4-Terphenyl-d14	79.7		"	0.331	279	79.7	33-122			
Surrogate: Nitrobenzene-d5	54.9		"	0.331	194	54.9	29-110			
Surrogate: 2-Fluorobiphenyl	61.9		"	0.331	217	61.9	33-115			

LCS (LCS-L603269)		Prepared: 03/07/2022 Analyzed: 03/07/2022								
Fluoranthene	0.116	0.000394	mg/Kg	0.167		69.4	30-130			
1-Methylnaphthalene	0.105	0.000364	"	0.167		62.8	30-130			
Naphthalene	0.103	0.000484	"	0.167		61.6	30-130			
Fluorene	0.101	0.000286	"	0.167		60.4	30-130			
Pyrene	0.115	0.000643	"	0.167		68.8	30-130			
Dibenz(a,h)anthracene	0.119	0.000614	"	0.167		71.2	30-130			
Chrysene	0.118	0.000624	"	0.167		70.6	30-130			
Benzo(k)fluoranthene	0.103	0.000437	"	0.167		61.6	30-130			
2-Methylnaphthalene	0.0971	0.000645	"	0.167		58.1	30-130			
Benzo(a)pyrene	0.129	0.000468	"	0.167		77.2	30-130			
Benzo(a)anthracene	0.112	0.000493	"	0.167		67	30-130			
Anthracene	0.104	0.000334	"	0.167		62.2	30-130			
Acenaphthene	0.0896	0.000304	"	0.167		53.6	30-130			
Benzo(b)fluoranthene	0.0989	0.000585	"	0.167		59.2	30-130			

Origins Laboratory, Inc.



The results in this report apply to the samples analyzed in accordance with the chain of custody document. This analytical report must be reproduced in its entirety.

Jen Pellegrini For Jordan A. Bynon, Project Manager

Eagle Environmental Consulting, Inc.
8000 W 44th Ave
Wheat Ridge CO 80033

Martin C Eckert III
Project Number: -
Project: Bonanza - Antelope B-33

PAH by 8270D SIM - Quality Control
Waypoint Analytical, Inc.

Analyte	Result	Reporting Limit	Units	Spike Level	Source Result	%REC	%REC Limits	RPD	RPD Limit	Notes
---------	--------	-----------------	-------	-------------	---------------	------	-------------	-----	-----------	-------

Batch L603269 - 3550B

LCS (LCS-L603269)

Prepared: 03/07/2022 Analyzed: 03/07/2022

Indeno(1,2,3-cd)pyrene	0.0854	0.000627	mg/Kg	0.167		51.1	30-130			
Surrogate: Nitrobenzene-d5	61.8		"	0.333		61.8	29-110			
Surrogate: 4-Terphenyl-d14	87		"	0.333		87	33-122			
Surrogate: 2-Fluorobiphenyl	72.3		"	0.333		72.3	33-115			

LRB (LRB-L603269)

Prepared: 03/07/2022 Analyzed: 03/07/2022

Chrysene	ND	0.00067	mg/Kg				-			
Dibenz(a,h)anthracene	ND	0.00067	"				-			
Fluoranthene	ND	0.00067	"				-			
Fluorene	ND	0.00067	"				-			
Indeno(1,2,3-cd)pyrene	ND	0.00067	"				-			
Benzo(k)fluoranthene	ND	0.00067	"				-			
Naphthalene	ND	0.00067	"				-			
Benzo(b)fluoranthene	ND	0.00067	"				-			
Benzo(a)pyrene	ND	0.00067	"				-			
Benzo(a)anthracene	ND	0.00067	"				-			
Anthracene	ND	0.00067	"				-			
Acenaphthene	ND	0.00067	"				-			
2-Methylnaphthalene	ND	0.00067	"				-			
1-Methylnaphthalene	ND	0.00067	"				-			
Pyrene	ND	0.00067	"				-			
Surrogate: Nitrobenzene-d5	60.3		"	0.333		60.3	29-110			
Surrogate: 4-Terphenyl-d14	85.8		"	0.333		85.8	33-122			
Surrogate: 2-Fluorobiphenyl	69.6		"	0.333		69.6	33-115			

Origins Laboratory, Inc.



The results in this report apply to the samples analyzed in accordance with the chain of custody document. This analytical report must be reproduced in its entirety.

Jen Pellegrini For Jordan A. Bynon, Project Manager

Eagle Environmental Consulting, Inc.

8000 W 44th Ave

Wheat Ridge CO 80033

Martin C Eckert III

Project Number: -

Project: Bonanza - Antelope B-33

Notes and Definitions

J Estimated Value. Analyte below reported quantitation limit.

ND Analyte NOT DETECTED at or above the reporting limit

RPD Relative Percent Difference

All soil results are reported on a wet weight basis.

Origins Laboratory, Inc.



Jen Pellegrini For Jordan A. Bynon, Project Manager

The results in this report apply to the samples analyzed in accordance with the chain of custody document. This analytical report must be reproduced in its entirety.