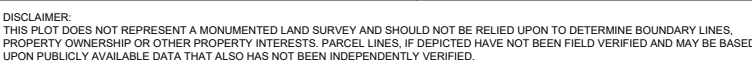


## RELATED LOCATION & FLOWLINE MAP



PREPARED FOR:

**ne noble**  
**energy**

PLAT: P:\NOB\_\_B210018\PROD\2A\RELATED LOCATION &amp; FLOWLINE MAP\_AB28-13 MULTI LAYOUT TAB: LOCATION FLOWLINE

OGDP 4  
RELATED LOCATION & FLOWLINE MAP

Number	Location ID	Location Name	Location Status	Operator
1	424902	Weld County /9-28	AC	PDC ENERGY INC
2	421034	SPAUR USX AB /33-07 TANK	AC	NOBLE ENERGY INC
3	424859	Robel 3 Pad /19-28	AC	PDC ENERGY INC
4	424858	Robel Facility /12-28	AC	PDC ENERGY INC
5	421723	HOWE USX AB /33-05D TANK	AC	NOBLE ENERGY INC
6	421720	HOWE USX AB /33-03	AC	NOBLE ENERGY INC
7	302232	HOWE USX AB-67N64W /33NWNW	AC	NOBLE ENERGY INC
8	421037	SPAUR USX AB /33-17	AC	NOBLE ENERGY INC
9	306367	HOWE-USX AB-67N64W /33SENW	AC	NOBLE ENERGY INC
10	421040	SPAUR USX AB /33-07	AC	NOBLE ENERGY INC
11	302678	ROUSE USX AB-67N64W /33NESW	AC	NOBLE ENERGY INC
12	302720	OWL CREEK-67N64W /33NESE	AC	PDC ENERGY INC
13	466163	Tatman /34	AC	GREAT WESTERN OPERATING COMPANY LLC
14	309864	TATMAN-67N64W /34NWSW	AC	GREAT WESTERN OPERATING COMPANY LLC
15	322608	CHRISTENSEN-67N64W /34SWSW	AC	NOBLE ENERGY INC
16	435903	Bruegman South EG Pad /34-021HN	AC	GREAT WESTERN OPERATING COMPANY LLC
17	472632	OWL CREEK-67N64W /33SESE	AC	PDC ENERGY INC
18	421229	WEST IRRIGATION USX AB /33-23	AC	NOBLE ENERGY INC
19	306369	WEST IRRIGATION-USX AB-67N64W /33SWSE	AC	NOBLE ENERGY INC
20	302694	ROUSE USX AB-67N64W /33SESW	AC	NOBLE ENERGY INC
21	306453	ROUSE-USX AB-67N64W /33NESW	AC	NOBLE ENERGY INC
22	302629	ROUSE USX AB-67N64W /33SWSW	AC	NOBLE ENERGY INC
23	306197	DILLARD A-66N64W /4NWNW	AC	NOBLE ENERGY INC
24	305084	LAWLEY-66N64W /4SWNE	AC	PDC ENERGY INC
25	332484	LAWLEY-66N64W /4NWNW	AC	PDC ENERGY INC
26	305118	BARRELL-66N64W /4NENE	AC	PDC ENERGY INC
27	305084	LAWLEY-66N64W /4SWNE	AC	PDC ENERGY INC
28	461157	Dillard /	AC	NOBLE ENERGY INC
29	305793	ERICKSON A-66N64W /4SWNW	AC	NOBLE ENERGY INC
30	310523	ERICKSON A-66N64W /4NWSW	AC	NOBLE ENERGY INC
31	332482	LAWLEY-66N64W /4NWSE	AC	PDC ENERGY INC
32	332483	LAWLEY-66N64W /4NESE	AC	PDC ENERGY INC
33	331956	EGGE-66N64W /3NWSW	AC	NOBLE ENERGY INC
34	302525	RODRIGUEZ-66N64W /3SWSW	AC	NOBLE ENERGY INC
35	450437	Dinges, Egge /3-33,3-32	AC	NOBLE ENERGY INC
36	305085	LAWLEY-66N64W /4NESE	AC	PDC ENERGY INC
37	332475	ERICKSON-66N64W /4SWSE	AC	PDC ENERGY INC
38	472947	Erickson /34-4	AC	PDC ENERGY INC
39	305155	ERICKSON-66N64W /4SESW	AC	PDC ENERGY INC
40	470897	Erickson 14, /24-4	AC	PDC ENERGY INC
41	305528	ERICKSON-66N64W /4SWSW	AC	PDC ENERGY INC
42	305508	HOWARD LAKE-66N64W /9NENW	AC	PDC ENERGY INC
43	423200	HOWARD USX A /09-19	AC	NOBLE ENERGY INC
44	332473	HOWARD LAKE-66N64W /9SWNW	AC	PDC ENERGY INC
45	423216	HOWARD USX A /09-19TANK	AC	NOBLE ENERGY INC

Number	Location ID	Location Name	Location Status	Operator
46	305969	ERICKSON A-66N64W /8SENE	AC	NOBLE ENERGY INC
47	306012	ERICKSON A-66N64W /8NENE	AC	NOBLE ENERGY INC
48	305968	ERICKSON A-66N64W /8NENE	AC	NOBLE ENERGY INC
49	305967	ERICKSON A-66N64W /8SWNE	AC	NOBLE ENERGY INC
50	306018	ERICKSON A-66N64W /8NWNW	AC	NOBLE ENERGY INC
51	302223	FRANCIS-66N64W /8NENW	AC	PDC ENERGY INC
52	422852	DYER USX A /05-14	AC	NOBLE ENERGY INC
53	330150	ERICKSON-66N64W /5SWSE	AC	NOBLE ENERGY INC
54	472904	Owl Creek /7; 7-5	AC	PDC ENERGY INC
55	302582	ROUSE USX A-66N64W /5SENE	AC	NOBLE ENERGY INC
56	302581	ROUSE USX A-66N64W /5SWNE	AC	NOBLE ENERGY INC
57	302564	ROUSE USX A-66N64W /5SENW	AC	NOBLE ENERGY INC
58	306456	ROUSE-USX A-66N64W /5NWNW	AC	NOBLE ENERGY INC
59	414025	ROUSE USX A /05-03	AC	NOBLE ENERGY INC
60	302695	ROUSE USX A-66N64W /5NWNW	AC	NOBLE ENERGY INC
61	306455	ROUSE-USX A-66N64W /5SENE	AC	NOBLE ENERGY INC
62	302618	ROUSE USX A-66N64W /5NENE	AC	NOBLE ENERGY INC
63	426843	NC Farms /20-32	AC	PDC ENERGY INC
64	305998	CECIL-67N64W /32SESW	AC	NOBLE ENERGY INC
65	305999	CECIL-67N64W /32NWSW	AC	NOBLE ENERGY INC
66	310416	SCOTT-67N64W /32SENE	AC	NOBLE ENERGY INC
67	309861	SCOTT-67N64W /32SWNE	AC	NOBLE ENERGY INC
68	447632	FAULKNER USX AB29-14 /	AC	NOBLE ENERGY INC
69	306431	FAULKNER-USX AB-67N64W /29NWSW	AC	NOBLE ENERGY INC
70	310307	FAULKNER-USX AB-67N64W /29SESW	AC	NOBLE ENERGY INC
71	422815	HEINZE USX AB /29-15	AC	NOBLE ENERGY INC
72	422814	HEINZE USX AB /29-09D TANK	AC	NOBLE ENERGY INC
73	332470	HEINZE-67N64W /29SESE	AC	PDC ENERGY INC
74	310417	WESTERMAN-67N64W /32NENE	AC	NOBLE ENERGY INC
75	322724	OWL CREEK-67N64W /33SESE	AC	PDC ENERGY INC
76	421232	WEST IRRIGATION USX AB /33-23 TANK	AC	NOBLE ENERGY INC