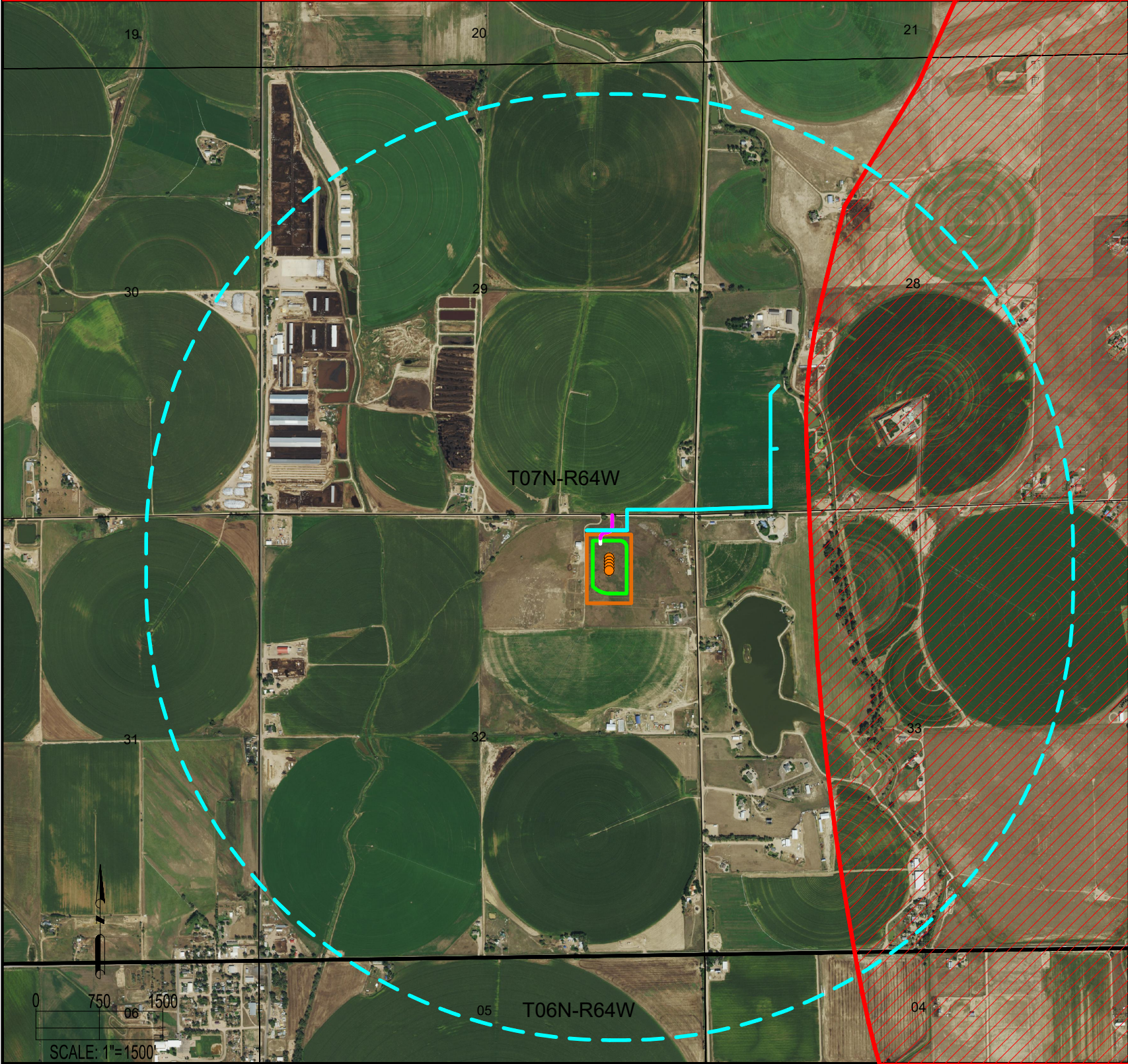


AB32-01 PAD
WILDLIFE HABITAT DRAWING



WILDLIFE HABITAT: (AS MEASURED FROM THE PROPOSED WORKING PAD SURFACE)	
THERE ARE HIGH PRIORITY HABITATS WITHIN THE ONE MILE RADIUS	PRONGHORN WINTER CONCENTRATION AREA IS ±2177' E FROM PROPOSED WORKING PAD SURFACE

DISTURBED ACREAGE WITHIN THE WILDLIFE HABITAT:	
OIL AND GAS LOCATION:	0.0 AC
WORKING PAD SURFACE:	0.0 AC
PAD PROPOSED FLOWLINE CORRIDOR:	0.0 AC
PROPOSED ACCESS ROAD	0.0 AC
TOTAL"	0.0 AC

DISCLAIMER:
THIS PLOT DOES NOT REPRESENT A MONUMENTED LAND SURVEY AND SHOULD NOT BE RELIED UPON TO DETERMINE BOUNDARY LINES.
PROPERTY OWNERSHIP OR OTHER PROPERTY INTERESTS, IF DEPICTED HAVE NOT BEEN FIELD VERIFIED AND MAY BE BASED
UPON PUBLICLY AVAILABLE DATA THAT ALSO HAS NOT BEEN INDEPENDENTLY VERIFIED.



FIELD DATE: 05-21-21	DRAWING DATE: 12-17-21
DRAWN BY: CSG	CHECKED BY: IJM

SITE NAME: AB32-01 PAD
SURFACE LOCATION: NE 1/4 NE 1/4 SEC. 32, T7N, R64W, 6TH P.M. WELD COUNTY, COLORADO

DATA SOURCE:
AERIAL IMAGERY: NAIP 2019
WILDLIFE HABITAT: COGCC

PUBLICLY AVAILABLE DATA SOURCES HAVE NOT
BEEN INDEPENDENTLY VERIFIED BY ASCENT.

LEGEND:	
● = PROPOSED WELL	— = SECTION LINE
	— = TOWNSHIP LINE
	— = PROPOSED FLOWLINE CORRIDOR
	— = PROPOSED ACCESS ROAD

	= HIGH PRIORITY HABITAT - PRONGHORN WINTER CONCENTRATION
	= 5280' RADIUS FROM WPS
	= OIL & GAS LOCATION
	= WORKING PAD SURFACE

