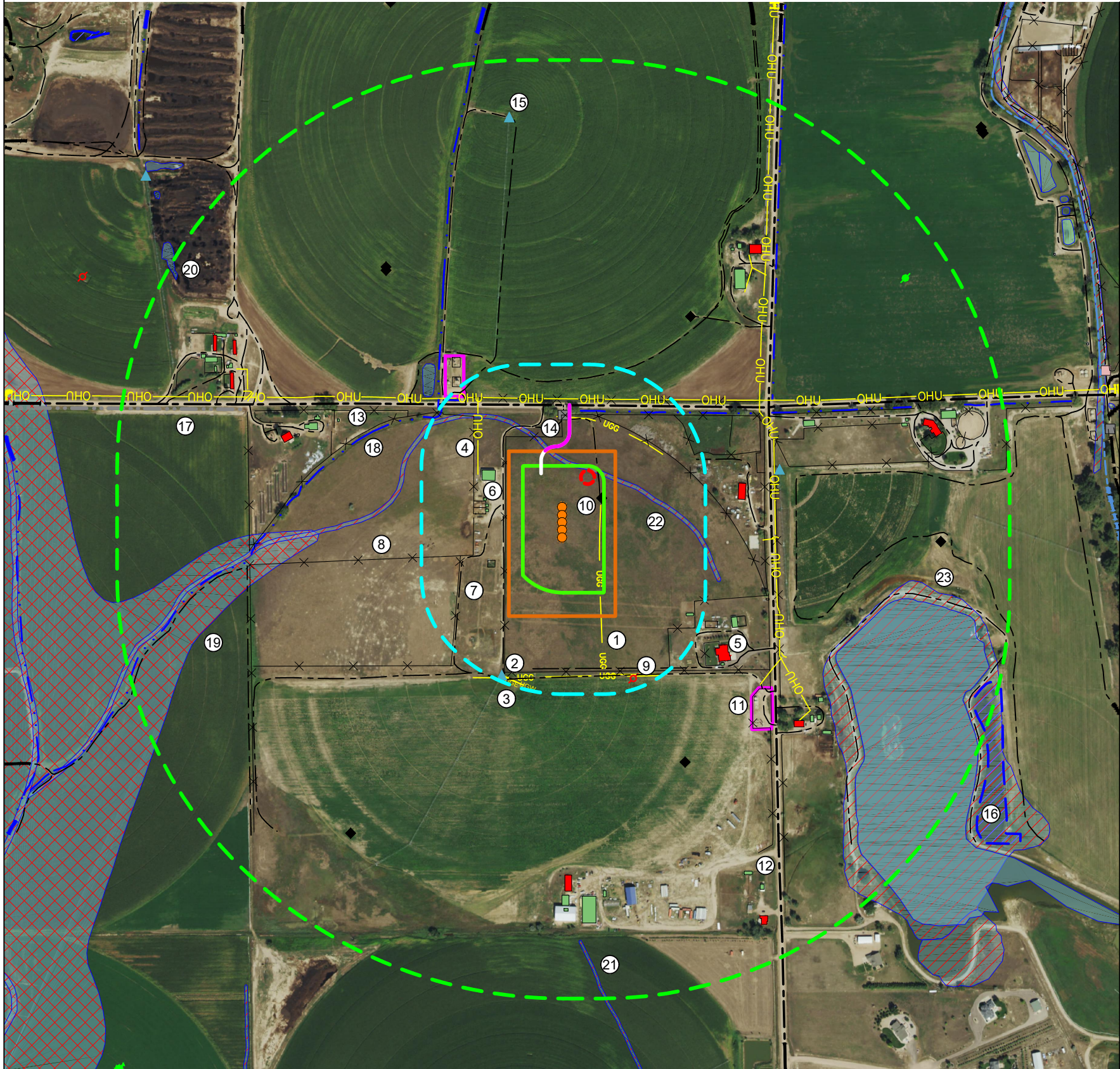


AB32-01 PAD
LOCATION DRAWING

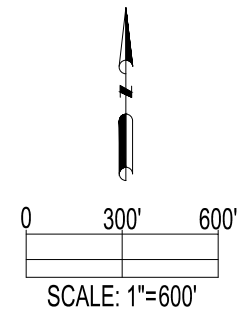


IMPROVEMENTS:
(AS MEASURED FROM THE PROPOSED WORKING PAD SURFACE)

| | |
|--|--|
| 1. UNDERGROUND GAS LINES: | ±0', ±410' S, ±221' NE |
| 2. UNDERGROUND WATER LINE: | ±497' SW |
| 3. UNDERGROUND ELECTRIC LINE: | ±501' SW |
| 4. OVERHEAD UTILITIES: | ±330' N, ±784' E, ±221' W, ±896' SE, ±1136' NE |
| 5. RESIDENTIAL BUILDING UNIT: | ±662' E, ±1597' E, ±1301' NE, ±1141' W, ±616' SE, ±1132' SE, ±1392' S, ±1770' SE, ±1475' NW, ±1517' NW, ±1614' NW |
| 6. BUILDINGS: | ±419' E, ±641' E, ±675' SE, ±1179' SE, ±1213' SE, ±1186' SE, ±1277' SE, ±1633' SE, ±1539' SE, ±1469' S, ±1496' S, ±1482' S, ±1557' S, ±1692' E, ±1494' E, ±1516' E, ±1019' E, ±1117' NE, 1262' NE, ±1289' NE, ±1547' NW, ±1512' NW, ±1655' NW, ±1580' NW, 932' W, ±995' W, ±1026' W, ±1028' W, ±135' W, ±169' W, ±169' W, ±179' W, ±1596' NW, ±1475' NW, ±1592' NW |
| 7. PRIVATE ROADS: | ±95' W, ±96' W, ±373' S, ±504' SE, ±926' SE, ±1019' SE, ±1157' SE, ±938' E, 0', ±468' E, ±870' NE, ±889' NE, ±415' N, ±414' NW, ±506' NW, ±1182' NW, ±1004' W, ±1365' NW, ±1425' NW, ±1494' W, ±1359' W |
| 8. FENCES: | ±88' W, ±137' W, ±181' W, ±372' SE, ±899' SE, ±1123' SE, ±851' E, ±240' NE, ±328' N, ±1560' E, ±497' NW, ±578' NW, ±1185' NW, ±1167' NW, ±618' NW, ±242' W |
| 9. ABANDONED WELL: | ±448' S, ±1783' NE |
| 10. EXISTING WELLS: | ±0', ±1661' E, ±881' NE, ±1192' NW, ±1178' NW, ±927' SE, ±1523' SW |
| 11. EXISTING FACILITIES: | ±894' SE, ±451' NW |
| 12. PUBLIC ROAD (WELD COUNTY ROAD 53): | ±809' E |
| 13. PUBLIC ROAD (WELD COUNTY ROAD 76): | ±288' N |
| 14. GATE: | ±250' N |
| 15. PIVOT POINTS: | ±868' E, ±1721' N, ±471' S |
| 16. MARSHLAND: | ±1899' SE |
| 17. CONCRETE DITCHES: | ±1430' NE, ±1421' W |
| 18. DITCHES: | ±452' NW, ±483' NW, ±272' N, ±919' NE |
| 19. FLOODPLAIN: | ±1005' W |
| 20. PONDS: | ±571' NW, ±1186' SE, ±1942' NW |
| 21. PERENNIAL DITCH/CHANNEL WETLAND: | ±1713' S |
| 22. SEASONAL INTERMITTENT STREAMBED WETLAND: | ±0' |
| 23. PERMANENT LIMNETIC LAKE WETLAND: | ±1147' SE |

CULTURAL DISTANCES:

| | From Well | From Equipment | From Working Pad Surface |
|----------------------------------|-----------|----------------|--------------------------|
| BUILDING | ±363' W | ±277' W | ±135' W |
| RESIDENTIAL BUILDING UNIT | ±933' SE | ±817' E | ±616' SE |
| HIGH OCCUPANCY BUILDING UNIT | +5280' SW | +5280' SW | +5280' SW |
| DESIGNATED OUTSIDE ACTIVITY AREA | +5280' SW | +5280' SW | +5280' SW |
| PUBLIC ROAD | ±490' N | ±349' N | ±288' N |
| ABOVE GROUND UTILITY | ±445' NW | ±364' W | ±221' W |
| RAILROAD | +5280' W | +5280' W | +5280' W |
| PROPERTY LINE | ±277' W | ±222' W | ±82' W |
| SCHOOL FACILITY | +5280' SW | +5280' SW | +5280' SW |
| SCHOOL PROPERTY LINE | +5280' SW | +5280' SW | +5280' SW |
| CHILD CARE CENTER | +5280' SW | +5280' SW | +5280' SW |
| DIC BOUNDARY | +5280' W | +5280' W | +5280' W |



DATA SOURCE:
AERIAL IMAGERY: NAIP 2019
WATER WELLS: COLORADO DWR
NHD: USGS

PUBLICLY AVAILABLE DATA SOURCES HAVE NOT BEEN INDEPENDENTLY VERIFIED BY ASCENT.

OIL & GAS SURFACE ACREAGE:

9.8 ACRES OIL & GAS LOCATION
5.6 ACRES WORKING PAD SURFACE
2.4 ACRES INTERIM RECLAIM

DISCLAIMER:
THIS PLOT DOES NOT REPRESENT A MONUMENTED LAND SURVEY AND SHOULD NOT BE RELIED UPON TO DETERMINE BOUNDARY LINES. PROPERTY OWNERSHIP OR OTHER PROPERTY INTERESTS, IF DEPICTED HAVE NOT BEEN FIELD VERIFIED AND MAY BE BASED UPON PUBLICLY AVAILABLE DATA THAT ALSO HAS NOT BEEN INDEPENDENTLY VERIFIED.

CURRENT SURFACE USE: IRRIGATED CROP
FUTURE SURFACE USE: IRRIGATED CROP

REFERENCE LOCATION

WESTERMAN A5-726

LAT: 40.535018° N
LONG: 104.568600° W
ELEVATION: 4814'
572' FNL & 1027' FEL
PDOP: 1.5
GPS OPERATOR: RYAN DESMOND



| | | |
|-------------------------|---------------------------|--|
| FIELD DATE: 05-21-21 | DRAWING DATE: 06-07-21 | SITE NAME: AB32-01 PAD |
| DRAWN BY: LNJ | CHECKED BY: CSG | SURFACE LOCATION: NE 1/4 NE 1/4 SEC. 32, T7N, R64W, 6TH P.M. WELD COUNTY, COLORADO |

| | | | | | | |
|----------------|---|--|---|---|---|---|
| LEGEND: | <ul style="list-style-type: none">PROPOSED WELLEXISTING WELLPLUGGED & ABANDONED WELLDRY & ABANDONED WELLPIVOT POINT | <ul style="list-style-type: none">CANALFENCEDITCHPRIVATE ROADPUBLIC ROAD | <ul style="list-style-type: none">CONCRETE DITCHOVERHEAD UTILITYUNDERGROUND WATER LINEUNDERGROUND GAS LINEUNDERGROUND ELECTRIC LINE | <ul style="list-style-type: none">500' RADIUS FROM WPS2000' RADIUS FROM WPSOIL & GAS LOCATIONWORKING PAD SURFACERESIDENTIAL BUILDING UNIT | <ul style="list-style-type: none">BUILDINGGATEPONDWETLANDFLOODPLAIN | <ul style="list-style-type: none">EXISTING FACILITYCATTLE GAURDPROPOSED MLVTPROPOSED ACCESS ROADMARSHLAND |
|----------------|---|--|---|---|---|---|

