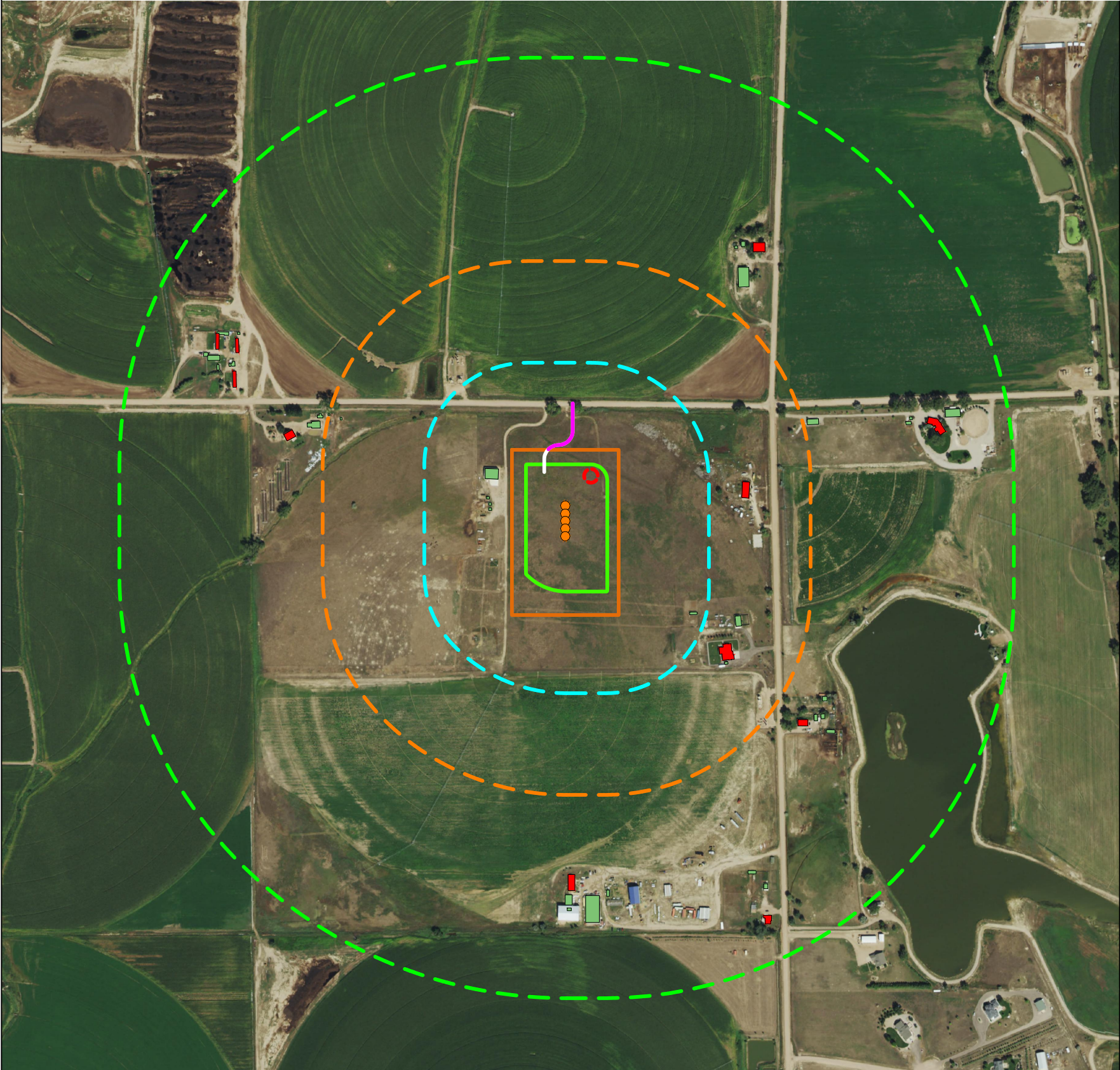
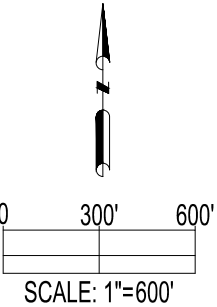


AB32-01 PAD
CULTURAL FEATURES MAP



| CULTURAL TABLE: (NUMBER OF FEATURES FOUND WITHIN EACH RADIUS AS MEASURED FROM THE WORKING PAD SURFACE) | | | | | |
|--|----------------------------|-------------------------------|-------------------|-------------------|-----------------------------------|
| | RESIDENTIAL BUILDING UNITS | HIGH OCCUPANCY BUILDING UNITS | SCHOOL PROPERTIES | SCHOOL FACILITIES | DESIGNATED OUTSIDE ACTIVITY AREAS |
| 0-500 FEET | 0 | 0 | 0 | 0 | 0 |
| 501-1,000 FEET | 2 | 0 | 0 | 0 | 0 |
| 1,001-2,000 FEET | 9 | 0 | 0 | 0 | 0 |
| 2,001-5,280 FEET | 31 | 0 | 0 | 0 | 0 |



DATA SOURCE:
AERIAL IMAGERY: NAIP 2019
WATER WELLS: COLORADO DWR
NHD: USGS

PUBLICLY AVAILABLE DATA SOURCES HAVE NOT BEEN INDEPENDENTLY VERIFIED BY ASCENT.

REFERENCE LOCATION
WESTERMAN A5-726

LAT: 40.535018° N
LONG: 104.568600° W
ELEVATION: 4814'
572' FNL & 1027' FEL
PDOP: 1.5
GPS OPERATOR: RYAN DESMOND

DISCLAIMER:
THIS PLOT DOES NOT REPRESENT A MONUMENTED LAND SURVEY AND SHOULD NOT BE RELIED UPON TO DETERMINE BOUNDARY LINES, PROPERTY OWNERSHIP OR OTHER PROPERTY INTERESTS. PARCEL LINES, IF DEPICTED HAVE NOT BEEN FIELD VERIFIED AND MAY BE BASED UPON PUBLICLY AVAILABLE DATA THAT ALSO HAS NOT BEEN INDEPENDENTLY VERIFIED.

CURRENT SURFACE USE: IRRIGATED CROP
FUTURE SURFACE USE: IRRIGATED CROP



| | | |
|--|---------------------------|---------------------------|
| FIELD DATE: 05-21-21 | DRAWING DATE: 06-07-21 | SITE NAME: AB32-01 PAD |
| DRAWN BY: LNJ | | CHECKED BY: CSG |
| SURFACE LOCATION: NE 1/4 NE 1/4 SEC. 32, T7N, R64W, 6TH P.M. WELD COUNTY, COLORADO | | |

- LEGEND:
- = PROPOSED WELL
 - = PROPOSED ACCESS ROAD
 - = 500' RADIUS FROM WPS
 - = 1000' RADIUS FROM WPS
 - = 2000' RADIUS FROM WPS
 - = OIL & GAS LOCATION
 - = WORKING PAD SURFACE
 - = BUILDING
 - = RESIDENTIAL BUILDING UNIT
 - = PROPOSED MLVT

