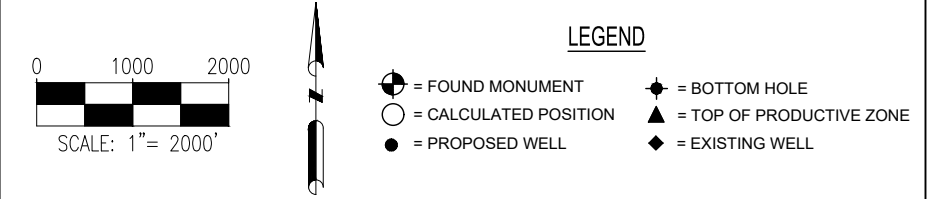
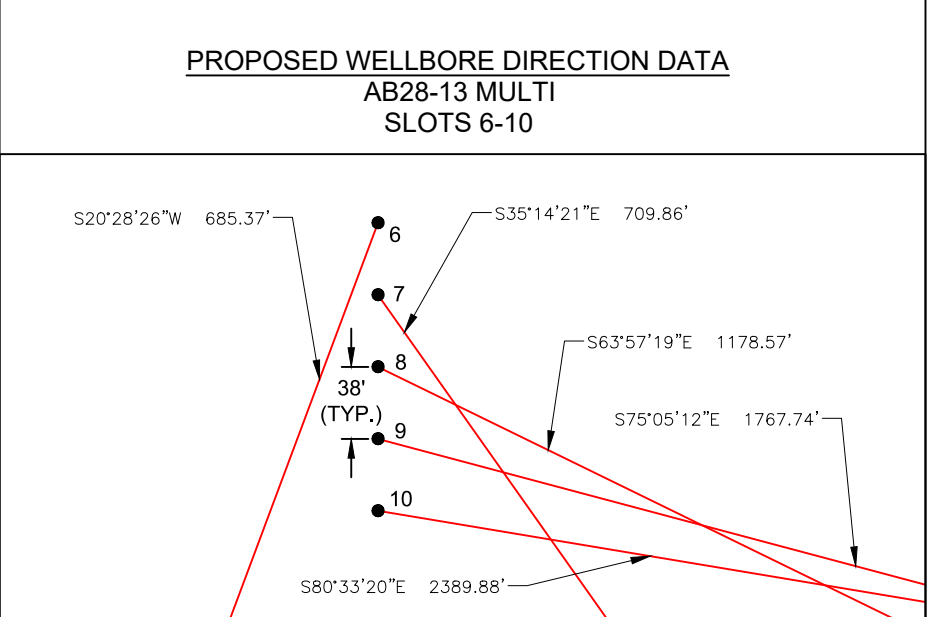
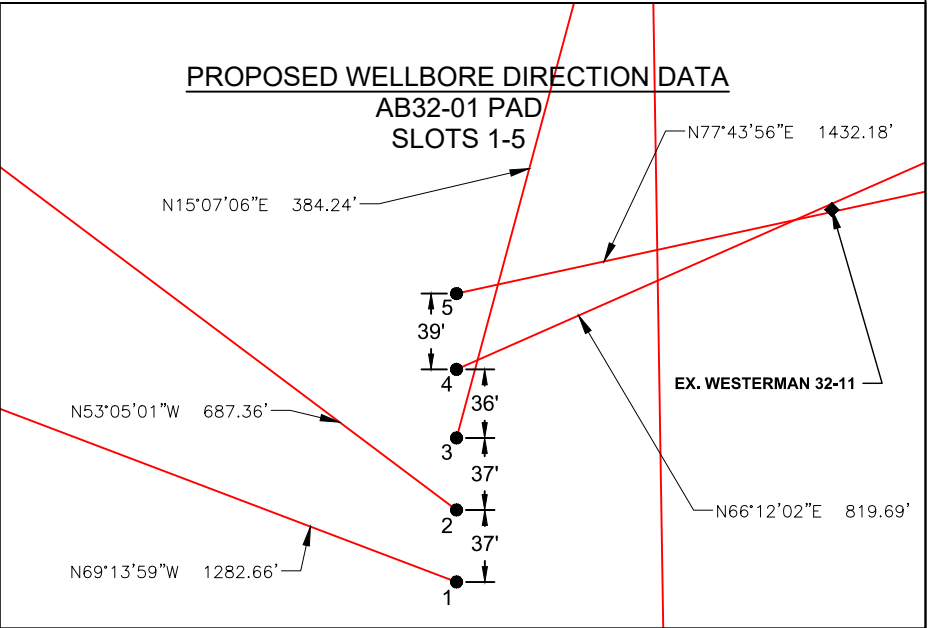
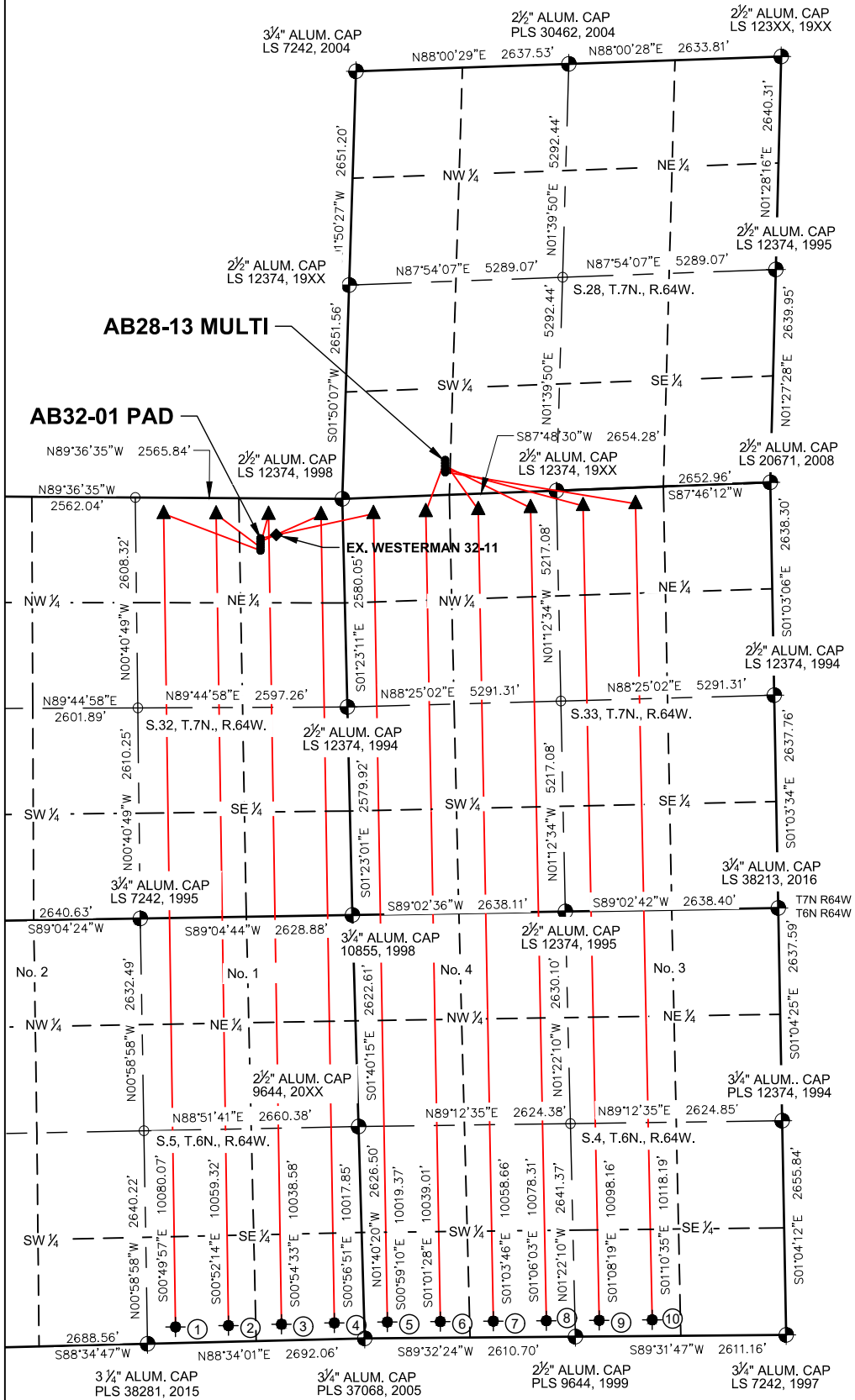


AB32-01 PAD & AB28-13 MULTI  
DIRECTIONAL WELL PLAT  
T7N R64W SECTION 32 & 28



- Notes:
- 1) All bearings are Grid Bearings of the Colorado State Plane Coordinate System, North Zone, North American Datum 1983/2011. The lineal dimensions as shown herein are grid distances based upon the "U.S. Survey Foot." To get ground distances multiply shown distance by 1.000259.
  - 2) Distances are measured at 90° from section line of the Sixth Principal Meridian, County of Weld, State of Colorado.
  - 3) Ground elevations are based on an observed GPS elevation (NAVD 1988 DATUM).
  - 4) Surface use: "IRRIGATED CROP"
  - 5) Instrument Operator: RYAN DESMOND
  - 6) This map does not represent a boundary survey.
  - 7) Existing well WESTERMAN 32-11 is at 421' FNL & 829' FEL, SEC. 32 T7N R64W.

DISCLAIMER:  
THIS PLOT DOES NOT REPRESENT A MONUMENTED LAND SURVEY AND SHOULD NOT BE RELIED UPON TO DETERMINE BOUNDARY LINES, PROPERTY OWNERSHIP OR OTHER PROPERTY INTERESTS. PARCEL LINES, IF DEPICTED HAVE NOT BEEN FIELD VERIFIED AND MAY BE BASED UPON PUBLICLY AVAILABLE DATA THAT ALSO HAS NOT BEEN INDEPENDENTLY VERIFIED.

SURFACE HOLE LOCATION							TOP OF PRODUCTIVE ZONE		BOTTOM HOLE LOCATION		
SLOT	WELL NAME	LATITUDE	LONGITUDE	FOOTAGE		QTR-QTR	ELEV.	FOOTAGE		FOOTAGE	
1	WESTERMAN A5-745	40.53481°N	104.56860°W	647' FNL	1029' FEL	NENE	4814'	200' FNL	2217' FEL	200' FSL	2340' FEL
2	WESTERMAN A5-736	40.53492°N	104.56860°W	609' FNL	1028' FEL	NENE	4815'	200' FNL	1568' FEL	200' FSL	1683' FEL
3	WESTERMAN A5-726	40.53502°N	104.56860°W	572' FNL	1027' FEL	NENE	4814'	200' FNL	918' FEL	200' FSL	1027' FEL
4	WESTERMAN A5-716	40.53512°N	104.56860°W	536' FNL	1027' FEL	NENE	4814'	200' FNL	269' FEL	200' FSL	370' FEL
5	WESTERMAN A4-786	40.53522° N	104.56860°W	496' FNL	1026' FEL	NENE	4812'	200' FNL	381' FWL	200' FSL	286' FWL
6	GABLE A4-776	40.53782°N	104.56033°W	433' FSL	1258' FWL	SWSW	4852'	200' FNL	1031' FWL	200' FSL	942' FWL
7	GABLE A4-766	40.53772°N	104.56033°W	395' FSL	1260' FWL	SWSW	4851'	200' FNL	1680' FWL	200' FSL	1598' FWL
8	GABLE A4-756	40.53762°N	104.56033°W	358' FSL	1261' FWL	SWSW	4851'	200' FNL	2330' FWL	200' FSL	2255' FWL
9	GABLE A4-745	40.53752°N	104.56033°W	320' FSL	1262' FWL	SWSW	4851'	200' FNL	2326' FEL	200' FSL	2312' FEL
10	GABLE A4-735	40.53741°N	104.56033°W	283' FSL	1263' FWL	SWSW	4850'	200' FNL	1676' FEL	200' FSL	1656' FEL

8620 Wolff Court  
Westminster, CO 80031  
(303) 928-7128  
www.ascentgeomatics.com

FIELD  
DATE:  
05-21-21

DRAWN BY:  
CSG

DRAWING  
DATE:  
06-07-21

CHECKED BY:  
IJM

**SURFACE LOCATION:**  
SEC. 32 & 28, T7N, R64W, 6TH P.M.  
WELD COUNTY, COLORADO

PUBLICLY AVAILABLE DATA SOURCES HAVE NOT  
BEEN INDEPENDENTLY VERIFIED BY ASCENT.