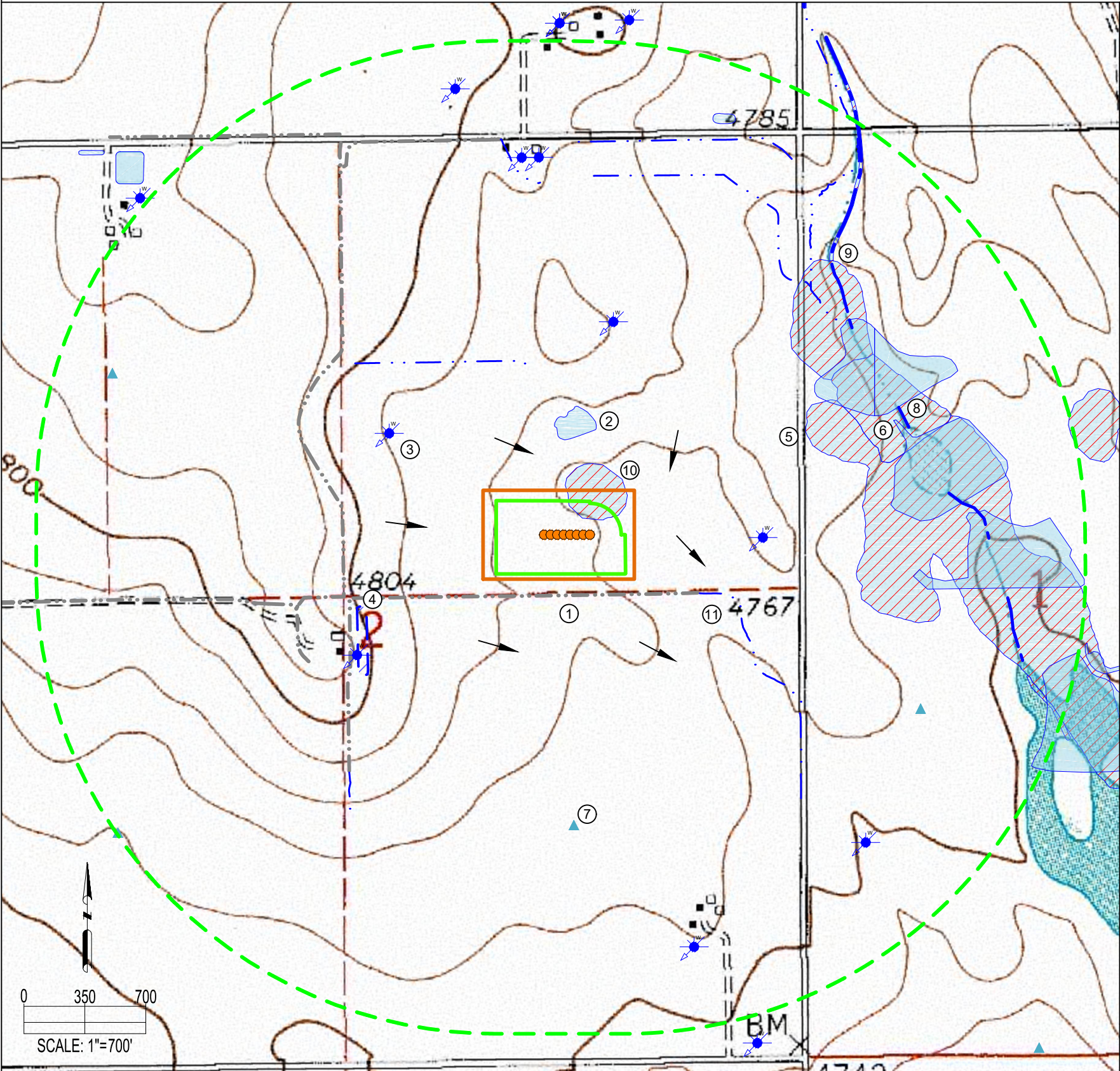


A02-07 PAD
HYDROLOGY MAP



IMPROVEMENTS:
(AS MEASURED FROM THE PROPOSED WORKING PAD SURFACE)

1. CONCRETE DITCH:	±117' S, ±876' W, ±1165' SW, ±2072' N
2. FRESHWATER POND (MAPPED BY ASCENT):	±350' N, ±1347' NE, ±1534' E, ±1652' E, ±2461' SE
3. WATER WELL:	±726' NW, ±790' E, ±924' SW, ±1039' N, ±1969' N, ±1971' N, ±2070' SE, ±2177' S, ±2375' N
4. FRESHWATER WETLAND (MAPPED BY ASCENT):	±777' SW
5. FRESHWATER EMERGENT WETLAND (MAPPED BY USFWS):	±1189' NE, ±1393' NE, ±2620' NE
6. FRESHWATER POND (MAPPED BY USFWS):	±1433' NE
7. PIVOT POINT:	±1442' S, ±1863' SE, ±2321' NW, ±2630' SW
8. INTERMITTENT STREAM (MAPPED BY USGS):	±1726' NE, ±1737' NE, ±1873' E, ±2197' E
9. INTERMITTENT STREAMBED WELAND (MAPPED BY USFWS):	±1910' NE, ±2380' SE
10. FRESHWATER POND (SEASONALLY FLOODED WETLAND) (MAPPED BY USFWS):	±0' (MAPPED), ±350'N (ACTUAL)
11. DITCH:	±431' SE, ±786' N, 1417' SW, 1699' NE, 1730' NE

THERE ARE NO PUBLIC WATER SYSTEMS FACILITIES, PWS INTAKES <15 MILES UPSTREAM, OR RULE 411 BUFFER ZONES WITHIN THE 2,640' RADIUS

NEAREST WATER WELL INFO:
(AS MEASURED FROM THE NEAREST EDGE OF THE PROPOSED WORKING PAD SURFACE)

PERMIT #	RECEIPT #	STATIC WATER LEVEL	DISTANCE/DIRECTION
248536	0504121	120'	±726' NW

NEAREST SURFACE WATER FEATURE:
(AS MEASURED FROM THE NEAREST EDGE OF THE PROPOSED WORKING PAD SURFACE)

FRESHWATER POND (SEASONALLY FLOODED) (MAPPED BY USGS):	±0' (MAPPED), ±350'N (ACTUAL)
CONCRETE DITCH	±117' S

DATA SOURCE:
TOPO MAP: USGS
WATER WELLS: COLORADO DWR
NHD: USGS
WETLANDS: USFWS
FLOODPLAINS: FEMA
PWS/RULE 411 BUFFERS: COGCC/CDPHE

PUBLICLY AVAILABLE DATA SOURCES HAVE NOT BEEN INDEPENDENTLY VERIFIED BY ASCENT.

DISCLAIMER:
THIS PLOT DOES NOT REPRESENT A MONUMENTED LAND SURVEY AND SHOULD NOT BE RELIED UPON TO DETERMINE BOUNDARY LINES, PROPERTY OWNERSHIP OR OTHER PROPERTY INTERESTS. PARCEL LINES, IF DEPICTED HAVE NOT BEEN FIELD VERIFIED AND MAY BE BASED UPON PUBLICLY AVAILABLE DATA THAT ALSO HAS NOT BEEN INDEPENDENTLY VERIFIED.



FIELD DATE: 07-09-19	DRAWING DATE: 08-16-21	SITE NAME: A02-07 PAD
DRAWN BY: JDH	CHECKED BY: IJM	SURFACE LOCATION: SW 1/4 NE 1/4 SEC. 2, T6N, R64W, 6TH P.M. WELD COUNTY, COLORADO

LEGEND:	● = PROPOSED WELL	--- = CONCRETE DITCH
	★ = WATER WELL	-.-.- = DITCH
	▲ = PIVOT POINT	--- = STREAM
	→ = FLOW DIRECTION	▨ = WETLAND
		▨ = POND

2640' BUFFER FROM WPS
WORKING PAD SURFACE
OIL & GAS LOCATION

