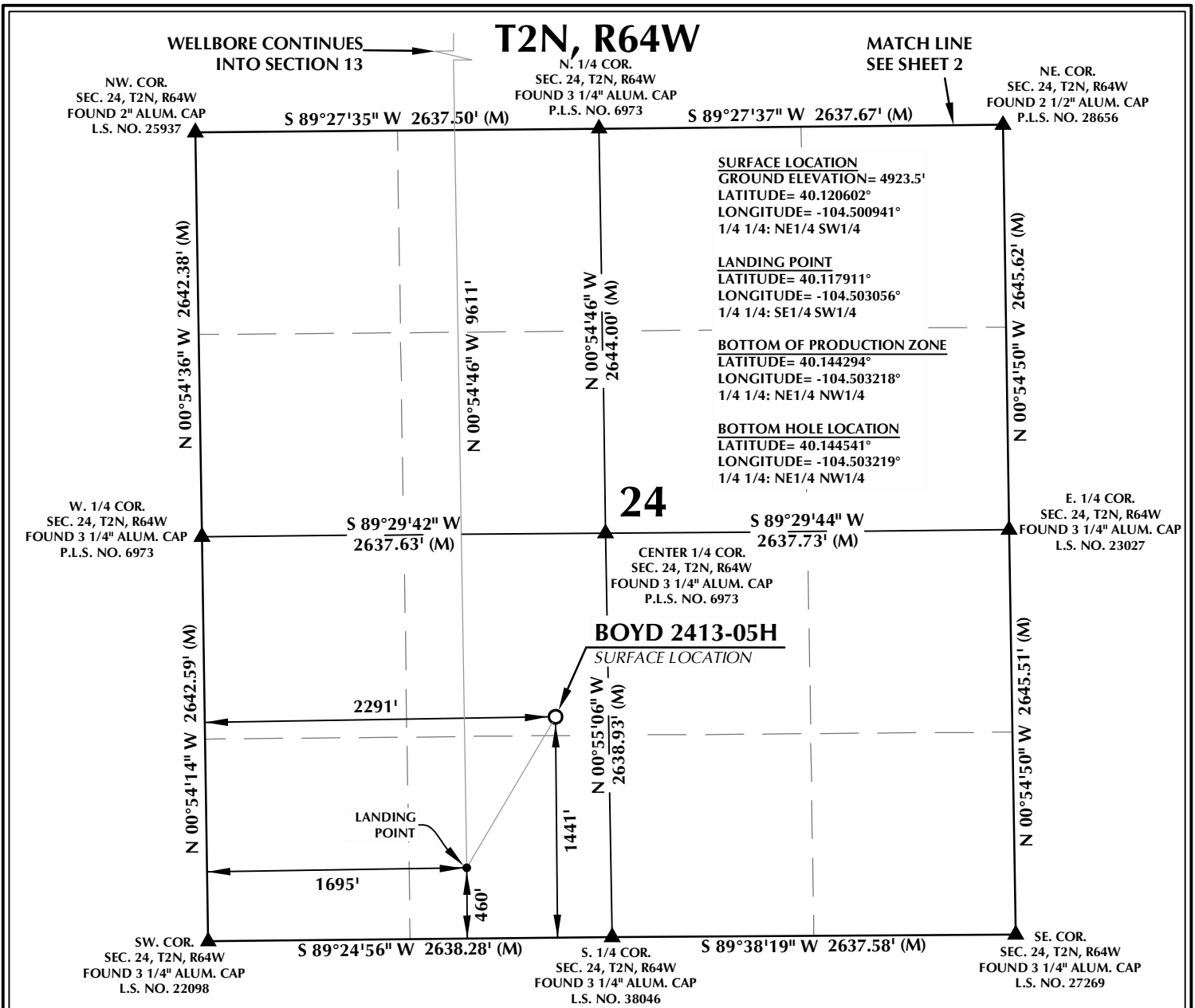


K:\VERDAD\2017\_138\_BOYD\_HELEN\_T2N\_R64W\_SEC\_24\PLATS\BOYD2413-05H.dwg, 12/22/2021 3:17:10 PM, samuel



#### CERTIFICATE OF SURVEYOR:

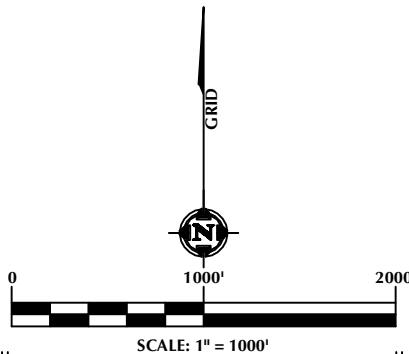
THIS IS TO CERTIFY THAT THE ABOVE PLAT WAS PREPARED FROM FIELD NOTES OF ACTUAL SURVEY MADE BY ME OR UNDER MY SUPERVISION AND THAT THE SAME ARE TRUE AND CORRECT TO THE BEST OF MY KNOWLEDGE AND BELIEF. THIS CERTIFICATE DOES NOT REPRESENT A LAND SURVEY PLAT OR IMPROVEMENT SURVEY PLAT AS DEFINED BY C.R.S. 38-51-102 AND CANNOT BE RELIED UPON TO DETERMINE OWNERSHIP.

*Randall K. French*  
RANDALL K. FRENCH  
PROFESSIONAL LAND SURVEYOR  
COLORADO REGISTRATION NUMBER 38512  
12/31/21

NOTICE:  
ACCORDING TO COLORADO STATE LAW YOU MUST COME TO A LEGAL ACTION BASED UPON ANY DEFECT IN THIS SURVEY WITHIN THREE YEARS AFTER YOU FIRST DISCOVER SUCH DEFECT. IN NO EVENT MAY ANY ACTION BASED UPON ANY DEFECT IN THIS SURVEY BE COMMENCED MORE THAN TEN YEARS FROM THE DATE ON THE CERTIFICATION SHOWN HEREON.

#### NOTES:

- ▲ INDICATES SECTION CORNER.
- INDICATES CALCULATED CORNER.
- ELEVATION BASED ON NAVD88 (GEOID12B).
- BASIS OF BEARING DERIVED FROM COLORADO COORDINATE SYSTEM OF 1983, NORTH ZONE.
- ALL MEASURED DISTANCES ARE GRID.  
COMBINED SCALE FACTOR: .99972694 CALCULATED FROM THE C. 1/4 CORNER OF SECTION 24, T2N, R64W.  
OPERATOR: JEREMY GROVES / PDOP = 1.3.
- SEE ADDENDUM TO WELL LOCATION CERTIFICATE FOR EXISTING IMPROVEMENTS WITHIN 500' OF THE WELL PAD.
- WELL FOOTAGES ARE MEASURED AT RIGHT ANGLES TO THE SECTION LINES.
- THE BOTTOM OF PRODUCTION ZONE BEARS N00°54'46"W, 9611' FROM THE LANDING POINT.

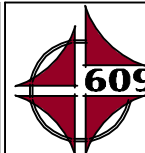


#### WELL PAD - ARNOLD 02N-64W-24

BOYD 2413-05H  
WELL LOCATION CERTIFICATE  
1441' FSL & 2291' FWL NESW (SURFACE)  
460' FSL & 1695' FWL SESW (LANDING POINT)  
LOCATED IN SECTION 24  
460' FNL & 1695' FWL NENW (BOTTOM OF PRODUCTION ZONE)  
370' FNL & 1695' FWL NENW (BOTTOM)  
LOCATED IN SECTION 13  
T2N, R64W, 6TH P.M.  
WELD COUNTY, COLORADO



1125 17th Street, Suite 550  
Denver, Colorado 80202



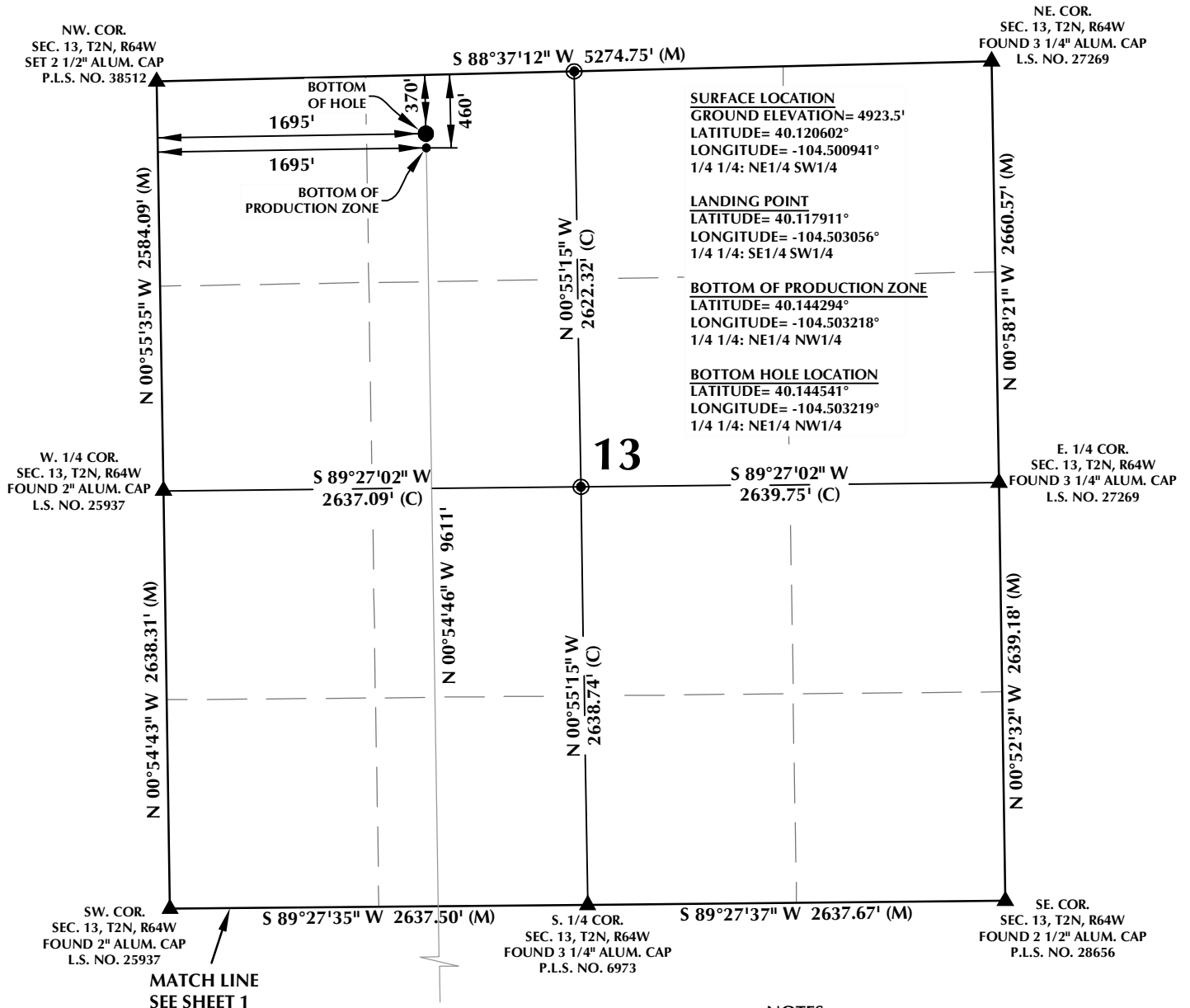
#### CONSULTING, LLC

SHERIDAN OFFICE  
1095 Saberton Avenue  
Sheridan, Wyoming 82801  
Phone 307-674-0609

LOVELAND OFFICE  
1635 Foxtrail Drive, Suite 204  
Loveland, Colorado 80538  
Phone 970-776-4331

DRAFTED BY:	SJM	CHECKED BY:	RKF	SHEET NO:
DATE DRAFTED:	12/3/21	DATE SURVEYED:	11/30/21	1
REVISED:		FILE NAME:	17-138	1 OF 2

# T2N, R64W

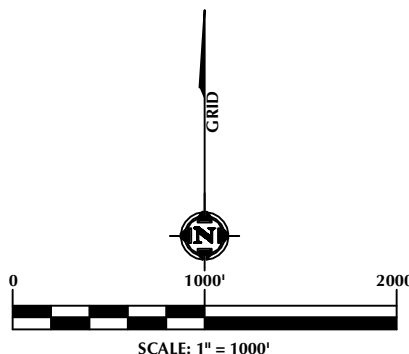


## CERTIFICATE OF SURVEYOR:

THIS IS TO CERTIFY THAT THE ABOVE PLAT WAS PREPARED FROM FIELD NOTES OF ACTUAL SURVEY MADE BY ME OR UNDER MY SUPERVISION AND THAT THE SAME ARE TRUE AND CORRECT TO THE BEST OF MY KNOWLEDGE AND BELIEF. THIS CERTIFICATE DOES NOT REPRESENT A LAND SURVEY PLAT OR IMPROVEMENT SURVEY PLAT AS DEFINED BY C.R.S. 38-51-102 AND CANNOT BE RELIED UPON TO DETERMINE OWNERSHIP.

*Randall K. French*  
**RANDALL K. FRENCH**  
 PROFESSIONAL LAND SURVEYOR  
 COLORADO REGISTRATION NUMBER 38512  
 12/3/21

NOTICE:  
 ACCORDING TO COLORADO STATE LAW YOU MUST COME UNDER LEGAL ACTION BASED UPON ANY DEFECT IN THIS SURVEY WITHIN THREE YEARS AFTER YOU FIRST DISCOVER SUCH DEFECT. IN NO EVENT MAY ANY ACTION BASED UPON ANY DEFECT IN THIS SURVEY BE COMMENCED MORE THAN TEN YEARS FROM THE DATE ON THE CERTIFICATION SHOWN HEREON.



## NOTES:

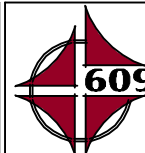
- ▲ INDICATES SECTION CORNER.
- INDICATES CALCULATED CORNER.
- ELEVATION BASED ON NAVD88 (GEOID12B).
- BASIS OF BEARING DERIVED FROM COLORADO COORDINATE SYSTEM OF 1983, NORTH ZONE.
- ALL MEASURED DISTANCES ARE GRID.  
 COMBINED SCALE FACTOR: .99972694 CALCULATED FROM THE C. 1/4 CORNER OF SECTION 24, T2N, R64W.  
 OPERATOR: JEREMY GROVES / PDOP = 1.3.
- SEE ADDENDUM TO WELL LOCATION CERTIFICATE FOR EXISTING IMPROVEMENTS WITHIN 500' OF THE WELL PAD.
- WELL FOOTAGES ARE MEASURED AT RIGHT ANGLES TO THE SECTION LINES.
- THE BOTTOM OF PRODUCTION ZONE BEARS N00°54'46\"/>

## WELL PAD - ARNOLD 02N-64W-24

BOYD 2413-05H  
 WELL LOCATION CERTIFICATE  
 1441' FSL & 2291' FWL NESW (SURFACE)  
 460' FSL & 1695' FWL SESW (LANDING POINT)  
 LOCATED IN SECTION 24  
 460' FNL & 1695' FWL NENW (BOTTOM OF PRODUCTION ZONE)  
 370' FNL & 1695' FWL NENW (BOTTOM)  
 LOCATED IN SECTION 13  
 T2N, R64W, 6TH P.M.  
 WELD COUNTY, COLORADO



1125 17th Street, Suite 550  
 Denver, Colorado 80202



## CONSULTING, LLC

SHERIDAN OFFICE 1095 Saberton Avenue Sheridan, Wyoming 82801 Phone 307-674-0609  
 LOVELAND OFFICE 1635 Foxtrail Drive, Suite 204 Loveland, Colorado 80538 Phone 970-776-4331

DRAFTED BY:	SJM	CHECKED BY:	RKF	SHEET NO:
DATE DRAFTED:	12/3/21	DATE SURVEYED:	11/30/21	2
REVISED:		FILE NAME:	17-138	2 OF 2