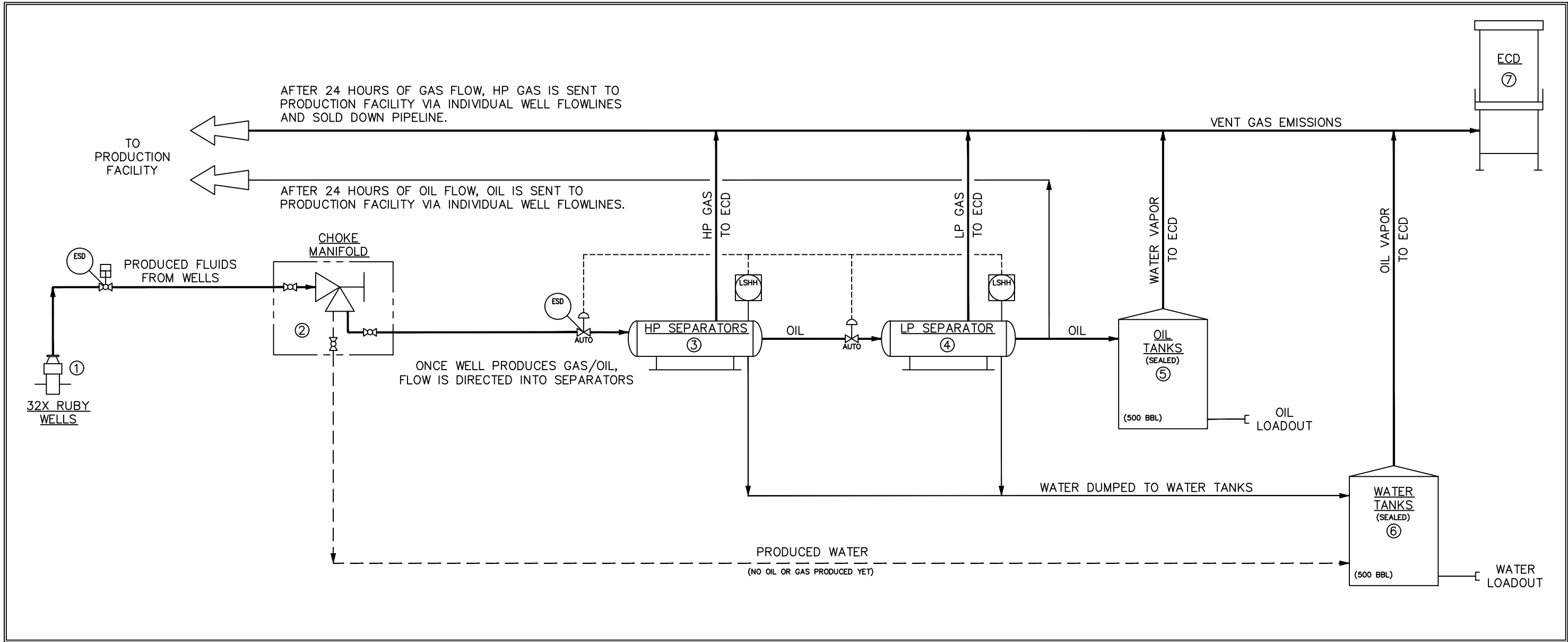




FLOWBACK PROCESS FLOW SUMMARY
BAYSWATER EXPLORATION & PRODUCTION, LLC
RUBY PRODUCTION FACILITY
WELD COUNTY, COLORADO

EQUIPMENT NAME	STATUS	QTY.
① WELL HEAD	PERMANENT	24
② CHOKE MANIFOLD	TEMPORARY	–
③ HP SEPARATORS	TEMPORARY	2
④ LP SEPARATOR	TEMPORARY	1
⑤ OIL TANKS (SEALED)	TEMPORARY	4
⑥ WATER TANKS (SEALED)	TEMPORARY	10
⑦ ECD	TEMPORARY	1

TEMPORARY SOUND WALL SURROUNDING ENTIRE FACILITY



NOTE:

REFERENCE DRAWINGS		REVISIONS						ENGINEERING RECORD		
NO.	TITLE	NO.	DATE	DESCRIPTION	BY	CHK.	APP.	BY	DATE	
								DRN: NAS	07/23/21	
								DES: NAS	07/23/21	
								CHK: BS	07/26/21	
								APP: RK	07/26/21	
 								AFE No.		
								JOB NO.	5000	
	B	09/13/21	ISSUED FOR REVIEW			NAS	BS	RK	PROJ. ENGR:	
	A	07/26/21	ISSUED FOR REVIEW			NAS	BS	RK	(FORMATTED 22x34") SCALE: N.T.S.	



BAYSWATER EXPLORATION & PRODUCTION LLC
RUBY – 32 WELL PAD
PROCESS
FLOWBACK PROCESS FLOW SUMMARY

DWG. NO. 5000-01-1220

REV B

