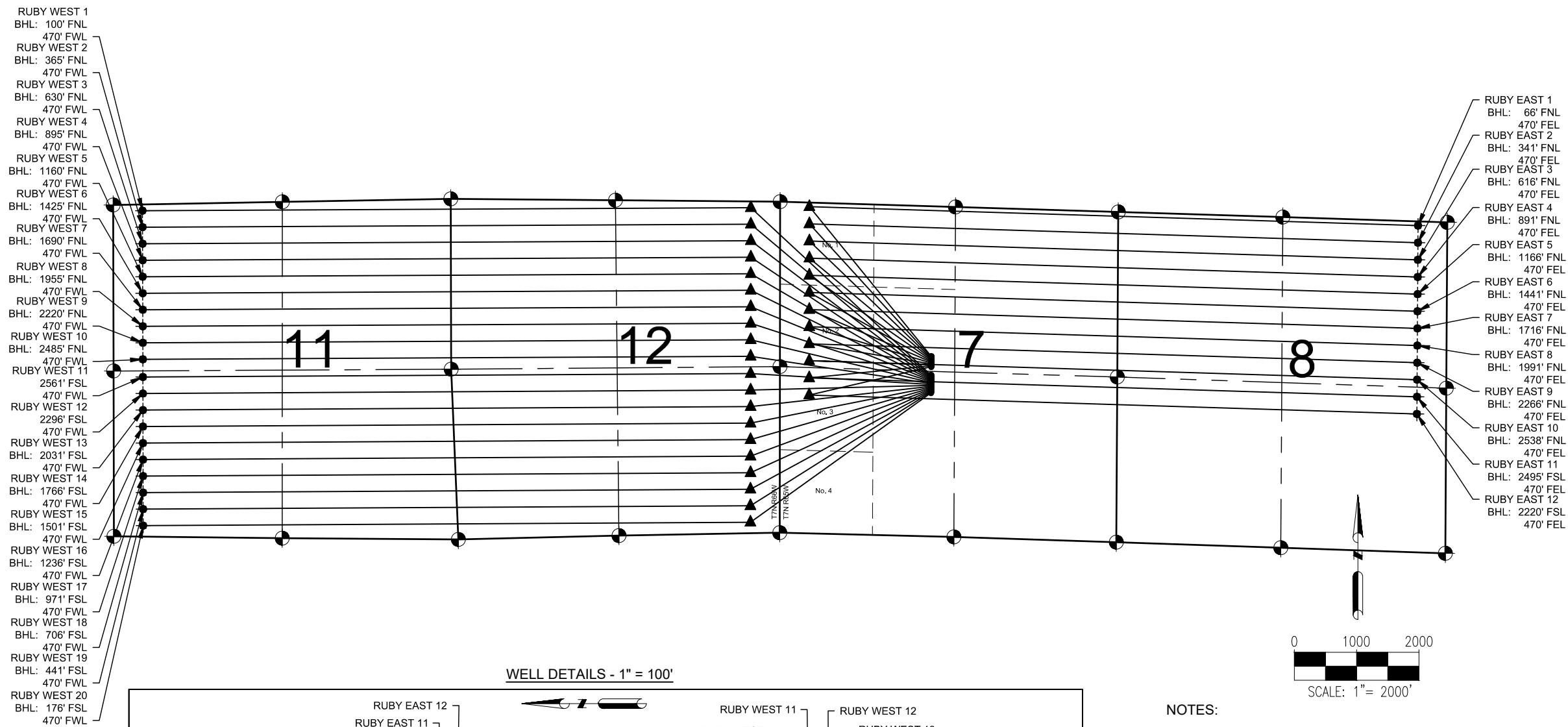
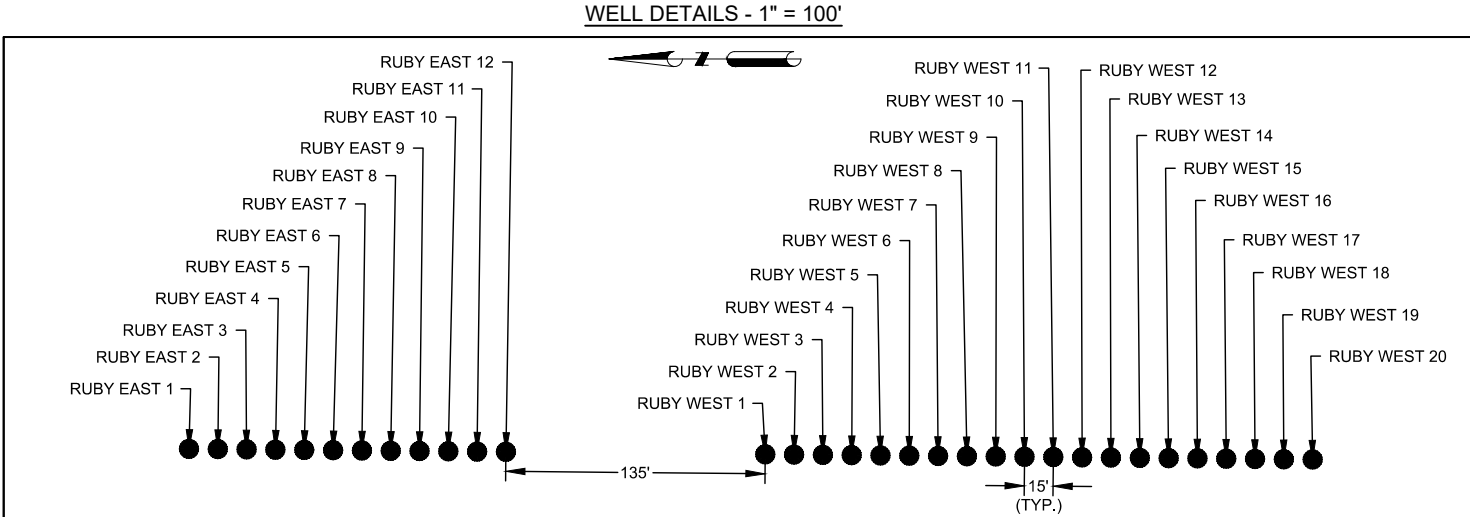


RUBY 7-J PAD
DIRECTIONAL WELL PLAT



NOTES:
RUBY EAST 1 TO BE AT 2408' FNL & 2429' FWL.
BOTTOM HOLE AT 66' FNL & 470' FEL, SEC. 8, T7N, R65W.
RUBY EAST 2 TO BE AT 2423' FNL & 2429' FWL.
BOTTOM HOLE AT 341' FNL & 470' FEL, SEC. 8, T7N, R65W.
RUBY EAST 3 TO BE AT 2438' FNL & 2429' FWL.
BOTTOM HOLE AT 616' FNL & 470' FEL, SEC. 8, T7N, R65W.
RUBY EAST 4 TO BE AT 2453' FNL & 2429' FWL.
BOTTOM HOLE AT 891' FNL & 470' FEL, SEC. 8, T7N, R65W.
RUBY EAST 5 TO BE AT 2468' FNL & 2429' FWL.
BOTTOM HOLE AT 1166' FNL & 470' FEL, SEC. 8, T7N, R65W.
RUBY EAST 6 TO BE AT 2483' FNL & 2429' FWL.
BOTTOM HOLE AT 1441' FNL & 470' FEL, SEC. 8, T7N, R65W.
RUBY EAST 7 TO BE AT 2498' FNL & 2428' FWL.
BOTTOM HOLE AT 1716' FNL & 470' FEL, SEC. 8, T7N, R65W.
RUBY EAST 8 TO BE AT 2513' FNL & 2428' FWL.
BOTTOM HOLE AT 1991' FNL & 470' FEL, SEC. 8, T7N, R65W.
RUBY EAST 9 TO BE AT 2528' FNL & 2428' FWL.
BOTTOM HOLE AT 2266' FNL & 470' FEL, SEC. 8, T7N, R65W.
RUBY EAST 10 TO BE AT 2543' FNL & 2428' FWL.
BOTTOM HOLE AT 2538' FNL & 470' FEL, SEC. 8, T7N, R65W.
RUBY EAST 11 TO BE AT 2558' FNL & 2428' FWL.
BOTTOM HOLE AT 2495' FSL & 470' FEL, SEC. 8, T7N, R65W.
RUBY EAST 12 TO BE AT 2573' FNL & 2428' FWL.
BOTTOM HOLE AT 2220' FSL & 470' FEL, SEC. 8, T7N, R65W.
RUBY WEST 1 TO BE AT 2587' FSL & 2427' FWL.
BOTTOM HOLE AT 100' FNL & 470' FWL, SEC. 11, T7N, R66W.
RUBY WEST 2 TO BE AT 2572' FSL & 2427' FWL.
BOTTOM HOLE AT 365' FNL & 470' FWL, SEC. 11, T7N, R66W.
RUBY WEST 3 TO BE AT 2557' FSL & 2427' FWL.
BOTTOM HOLE AT 630' FNL & 470' FWL, SEC. 11, T7N, R66W.
RUBY WEST 4 TO BE AT 2542' FSL & 2426' FWL.
BOTTOM HOLE AT 895' FNL & 470' FWL, SEC. 11, T7N, R66W.
RUBY WEST 5 TO BE AT 2527' FSL & 2426' FWL.
BOTTOM HOLE AT 1160' FNL & 470' FWL, SEC. 11, T7N, R66W.
RUBY WEST 6 TO BE AT 2512' FSL & 2426' FWL.
BOTTOM HOLE AT 1425' FNL & 470' FWL, SEC. 11, T7N, R66W.
RUBY WEST 7 TO BE AT 2497' FSL & 2426' FWL.
BOTTOM HOLE AT 1690' FNL & 470' FWL, SEC. 11, T7N, R66W.
RUBY WEST 8 TO BE AT 2482' FSL & 2426' FWL.
BOTTOM HOLE AT 1955' FNL & 470' FWL, SEC. 11, T7N, R66W.
RUBY WEST 9 TO BE AT 2467' FSL & 2426' FWL.
BOTTOM HOLE AT 2220' FNL & 470' FWL, SEC. 11, T7N, R66W.
RUBY WEST 10 TO BE AT 2452' FSL & 2426' FWL.
BOTTOM HOLE AT 2485' FNL & 470' FWL, SEC. 11, T7N, R66W.
RUBY WEST 11 TO BE AT 2437' FSL & 2426' FWL.
BOTTOM HOLE AT 2561' FSL & 470' FWL, SEC. 11, T7N, R66W.
RUBY WEST 12 TO BE AT 2422' FSL & 2425' FWL.
BOTTOM HOLE AT 2296' FSL & 470' FWL, SEC. 11, T7N, R66W.
RUBY WEST 13 TO BE AT 2407' FSL & 2425' FWL.
BOTTOM HOLE AT 2031' FSL & 470' FWL, SEC. 11, T7N, R66W.
RUBY WEST 14 TO BE AT 2392' FSL & 2425' FWL.
BOTTOM HOLE AT 1766' FSL & 470' FWL, SEC. 11, T7N, R66W.
RUBY WEST 15 TO BE AT 2377' FSL & 2425' FWL.
BOTTOM HOLE AT 1501' FSL & 470' FWL, SEC. 11, T7N, R66W.
RUBY WEST 16 TO BE AT 2362' FSL & 2425' FWL.
BOTTOM HOLE AT 1236' FSL & 470' FWL, SEC. 11, T7N, R66W.
RUBY WEST 17 TO BE AT 2347' FSL & 2425' FWL.
BOTTOM HOLE AT 971' FSL & 470' FWL, SEC. 11, T7N, R66W.
RUBY WEST 18 TO BE AT 2332' FSL & 2425' FWL.
BOTTOM HOLE AT 706' FSL & 470' FWL, SEC. 11, T7N, R66W.
RUBY WEST 19 TO BE AT 2317' FSL & 2425' FWL.
BOTTOM HOLE AT 441' FSL & 470' FWL, SEC. 11, T7N, R66W.
RUBY WEST 20 TO BE AT 2302' FSL & 2425' FWL.
BOTTOM HOLE AT 176' FSL & 470' FWL, SEC. 11, T7N, R66W.

- NOTES:
1. THIS FIELD SURVEY CONFORMS TO THE MINIMUM STANDARDS SET BY THE COGCC, RULE NO. 215
 2. ALL DISTANCES AND BEARINGS SHOWN HEREON ARE GROUND VALUES AS GPS MEASURED IN THE FIELD, WITH TIES TO WELLS MEASURED PERPENDICULAR TO LINES SHOWN HEREON. THIS LOW DISTORTION PROJECTION (LDP) IS BASED ON THE NORTH AMERICAN DATUM OF 1983, U.S. SURVEY FOOT WITH A LATITUDE ORIGIN OF 40.568059°N, A CENTRAL MERIDIAN LONGITUDE OF 104.658844°W, AND A SCALE FACTOR ON THE CENTRAL MERIDIAN OF 1.000230 (EXACT). THE LDP BASIS OF BEARINGS IS GEODETIC NORTH.
 3. FIELD VERIFICATION OF MONUMENTS COMPLETED WITHIN 1 YEAR OF SIGNATURE DATE, UNLESS OTHERWISE NOTED.



- LEGEND
- = EXISTING MONUMENT
 - = CALCULATED POSITION
 - = PROPOSED WELL
 - ✦ = BOTTOM HOLE
 - ▲ = LANDING POINT
 - ◆ = EXISTING WELL
 - BHL = BOTTOM HOLE



FIELD DATE:
04-27-20
DRAWING DATE:
05-24-21
BY:
JW
CHECKED:
IJM

WELL NAME:
RUBY 7-J PAD
SURFACE LOCATION:
NE 1/4 SW 1/4 SEC. 7, T7N, R65W, 6TH P.M.
WELD COUNTY, COLORADO

PREPARED FOR:
BAYSWATER
EXPLORATION AND PRODUCTION, LLC