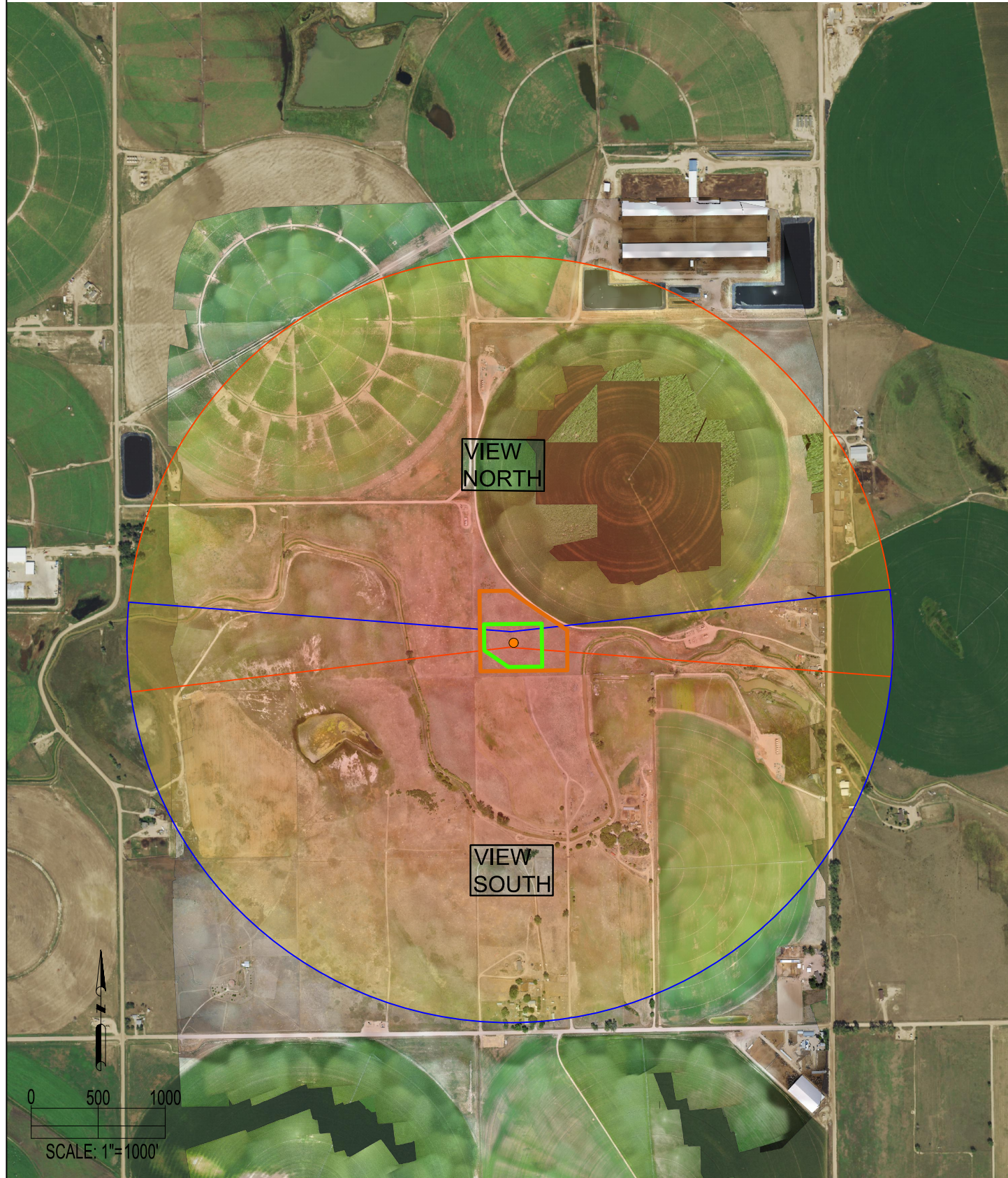


A12-07 FACILITY LOCATION PICTURES



LOCATION PICTURES:

NORTH VIEW (PANORAMIC)



SOUTH VIEW (PANORAMIC)



ALL PHOTOS WERE TAKEN ON 05/21/2021.

REFERENCE POINT
 LAT: 40.50175° N
 LONG: 104.49696° W
 ELEVATION: 4719'
 2292' FNL & 2269' FEL
 PDOP: 1.4
 GPS OPERATOR: RYAN DESMOND

DISCLAIMER:
 THIS PLOT DOES NOT REPRESENT A MONUMENTED LAND SURVEY AND SHOULD NOT BE RELIED UPON TO DETERMINE BOUNDARY LINES.
 PROPERTY OWNERSHIP OR OTHER PROPERTY INTERESTS, PARCEL LINES, IF DEPICTED HAVE NOT BEEN FIELD VERIFIED AND MAY BE BASED
 UPON PUBLICLY AVAILABLE DATA THAT ALSO HAS NOT BEEN INDEPENDENTLY VERIFIED.

LEGEND:

- = REFERENCE POINT
- = OIL & GAS LOCATION
- = WORKING PAD SURFACE
- = FIELD OF VIEW - NORTH
- = FIELD OF VIEW - SOUTH

8620 Wolff Court
 Westminster, CO 80031
 (303) 928-7128
 www.ascentgeomatics.com

FIELD DATE: 05-21-21	DRAWING DATE: 08-11-21
DRAWN BY: JDH	CHECKED BY: IJM

SITE NAME:
A12-07 FACILITY

SURFACE LOCATION:
SW 1/4 NE 1/4 SEC. 12, T6N, R64W, 6TH P.M.
WELD COUNTY, COLORADO

DATA SOURCE:
AERIAL IMAGERY: ASCENT

PUBLICLY AVAILABLE DATA SOURCES HAVE NOT BEEN INDEPENDENTLY VERIFIED BY ASCENT.

PREPARED FOR: